

# ELECTRICAL PARTS LIST

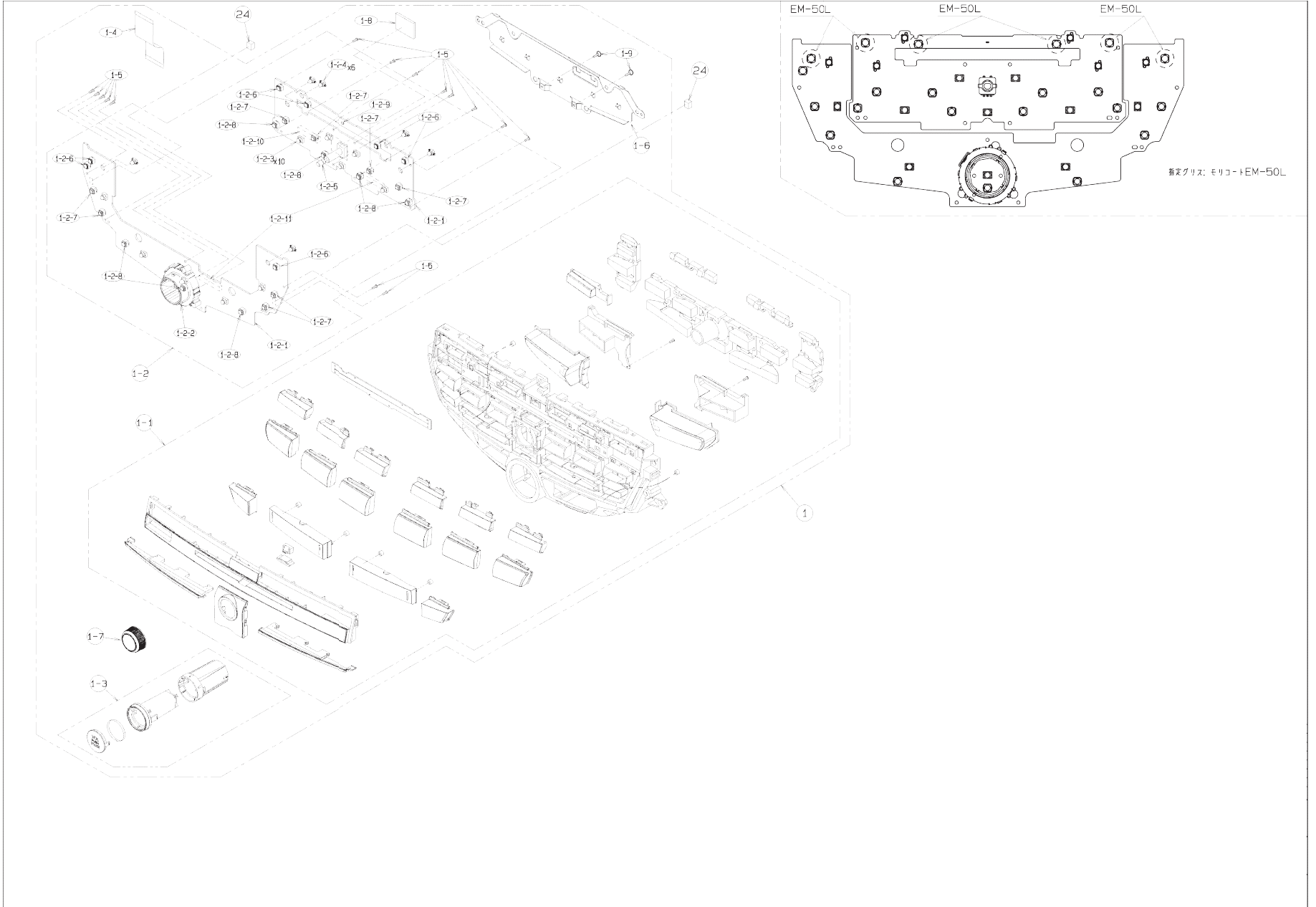
## MAIN PWB(B1) section

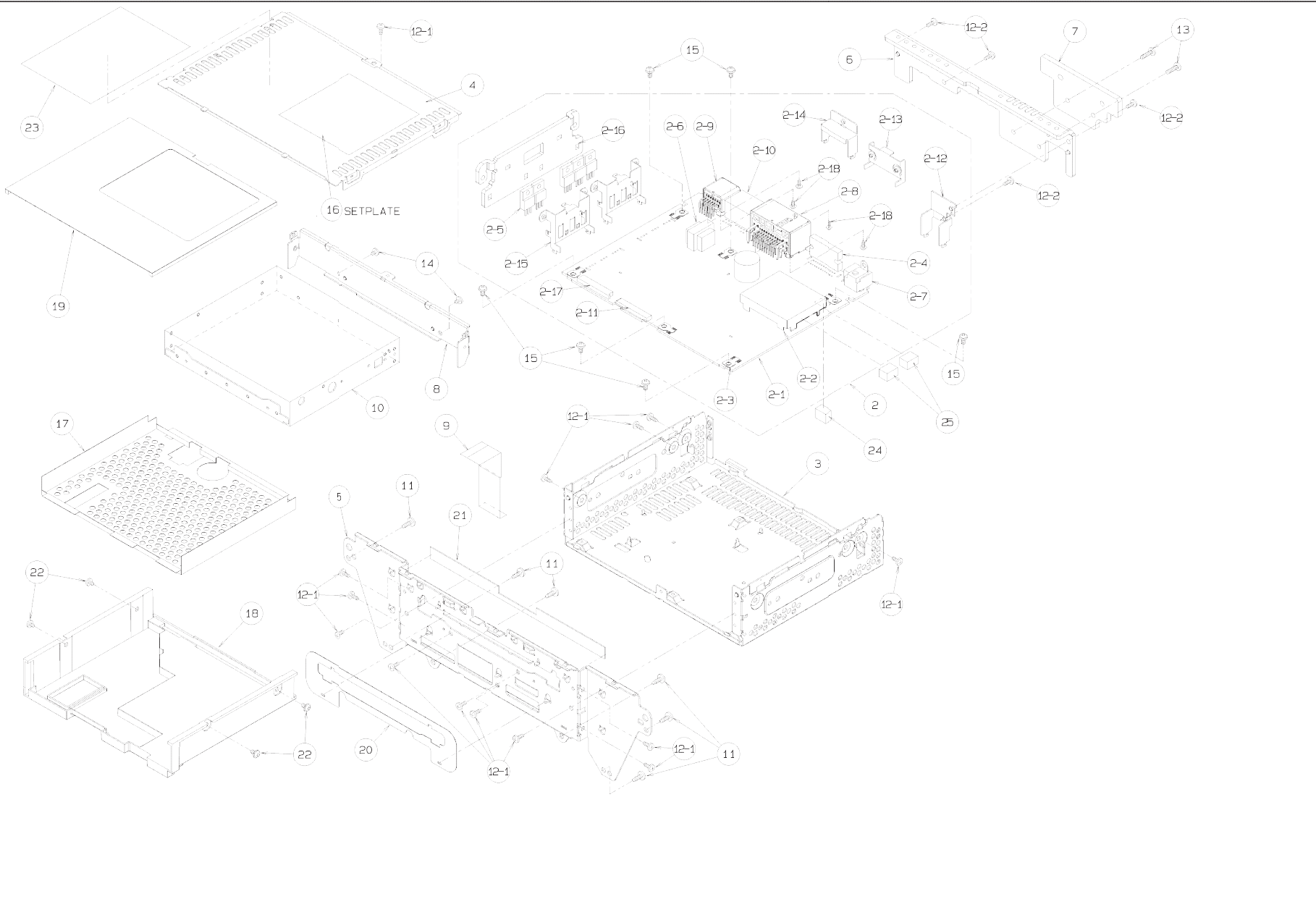
< Different parts from the original model >

REF No.	PART No.	DESCRIPTION
IC303	052-3217-60	uPD703273VYGC-C1 2-8EA-A (HONDA 12MY AUDIO CPU)
R301	-	NU
R303	119-1031-15	1/10W 10k ohm

## EXPLODED VIEW / PARTS LIST

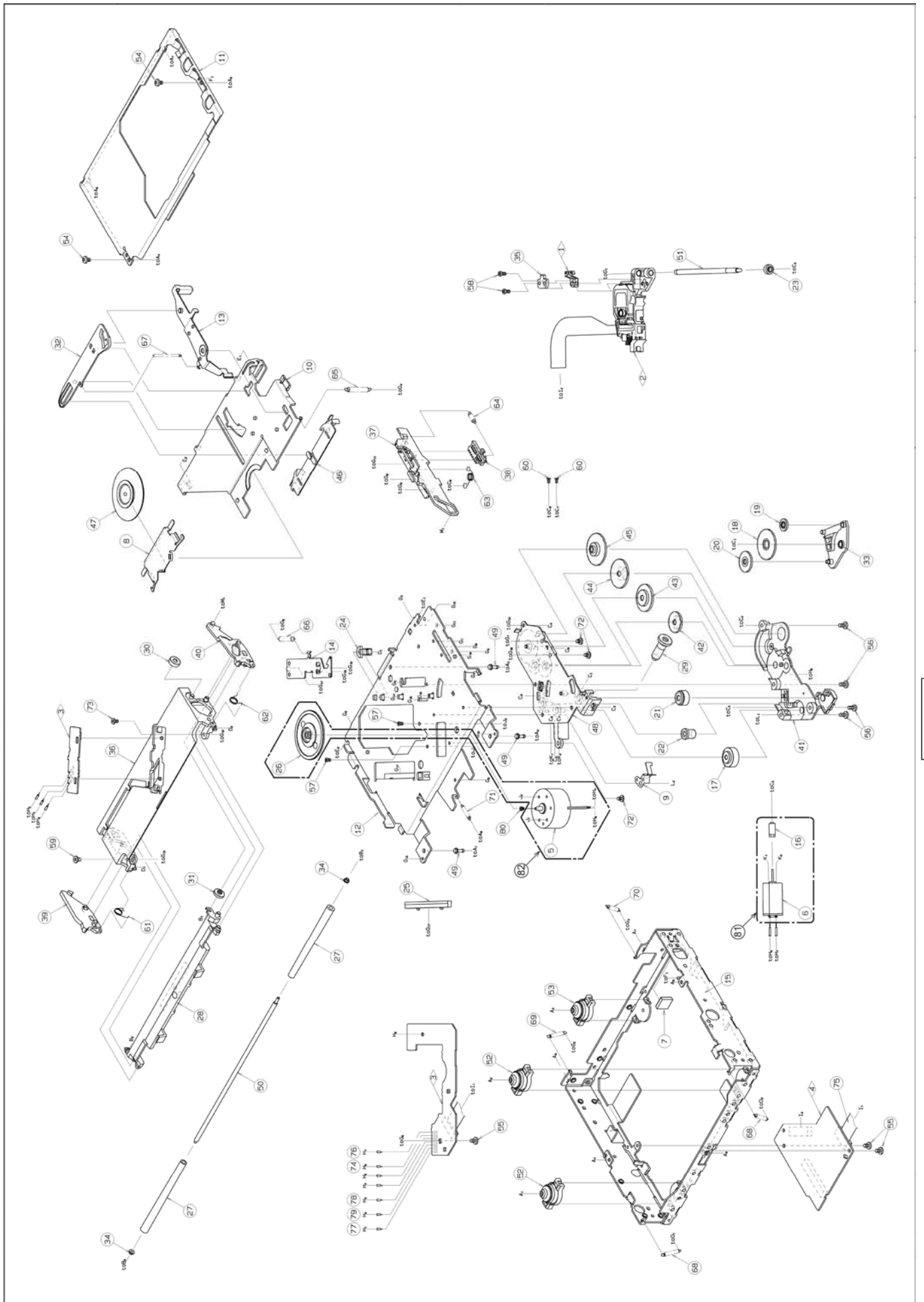
NO.	PART NO.	DESCRIPTION	Q'TY	NO.	PART NO.	DESCRIPTION	Q'TY
1	-----	PANEL-ASSY(3347B0-45)	1	2-11	074-1237-79	OUTLET SOCKET	1
1-1	940-8575-91	ESCUTCHEON-ASSY	1	2-12	331-4065-00	ANT HOLDER	1
1-2	-----	SW-PWB-ASSY(3347A7-77)	1	2-13	331-3459-00	IC HOLDER	1
1-2-1	-----	SW PWB(310100-039)	1	2-14	331-3769-00	OUTLET HOLDER	1
1-2-2	016-7003-00	ROTARY ENODER	1	2-15	331-4066-00	TR HOLDER	2
1-2-3	017-0464-52	PILOTLAMP	10	2-16	313-2017-00	SUB HEAT SINK	1
1-2-4	017-0460-02	PILOTLAMP	6	2-17	076-3011-74	PLUG	1
1-2-5	016-0018-20	VR W/SHAFT	1	2-18	778-3005-00	TAP SCREW	4
1-2-6	013-6202-52	TACT SWITCH	7	3	311-1943-01	LOWER CASE	1
1-2-7	013-6201-52	TACT SWITCH	8	4	310-1859-01	UPPER CASE	1
1-2-8	013-6207-50	TACT SWITCH	7	5	331-4410-01	ES-PLATE(A)	1
1-2-9	001-7103-91	DIODE	1	6	313-2015-03	HEAT SINK A	1
1-2-10	074-3014-74	OUTLET SOCKET	1	7	313-2016-02	HEAT SINK B	1
1-2-11	074-1158-69	OUTLET SOCKET	2	8	331-4412-00	MECH BRKT	1
1-3	948-0983-10	BUTTON-ASSY	1	9	816-4028-50	FLAT WIRE	1
1-4	816-4042-50	FLAT WIRE	1	10	929-5024-83	CD-MECH-MODULE	1
1-5	716-0778-51	SPECIAL SCREW	15	11	716-1553-50	SPECIAL SCREW	6
1-6	331-4411-01	PRESSED PART	1	12-1	714-2606-8B	MACHINE SCREW	14
1-7	380-5803-00	KNOB(S)	1	12-2	714-2606-8B	MACHINE SCREW	4
1-8	345-6057-01	CUSHION RUBBER	1	13	714-2614-8H	MACHINE SCREW	2
1-9	716-3615-00	SPECIAL SCREW	2	14	714-2603-8B	MACHINE SCREW	2
2	-----	MAIN-PWB-ASSY(3347B7-75)	1	15	716-0878-50	SPECIAL SCREW	6
2-1	-----	MAIN PWB(310202-039)	1	16	276-0928-05	SETPLATE	1
2-2	.880-2091G	TUNER(2091GH-80)	1	17	347-8233-00	MECH CVR	1
2-3	073-0762-90	TERMINAL	6	18	-	(MECH CVR) *UN	-
2-4	051-2042-00	IC	1	19	-	(CUSHION SHEET) *UN	-
2-5	103-2394-00	TRANSISTOR	5	20	-	(DUST-P-SHEET) *UN	-
2-6	009-0670-80	CHOKE	1	21	-	(SHADE) *UN	-
2-7	092-2209-00	ANT-RECEPT	1	22	-	(SCREW) *UN	-
2-8	074-4026-24	OUTLET SOCKET	1	23	-	(LABEL) *UN	-
2-9	074-4017-12	OUTLET SOCKET	1	24	345-6341-00	GASKET	3
2-10	074-1168-14	OUTLET SOCKET	1	25	345-6066-00	GASKET	2



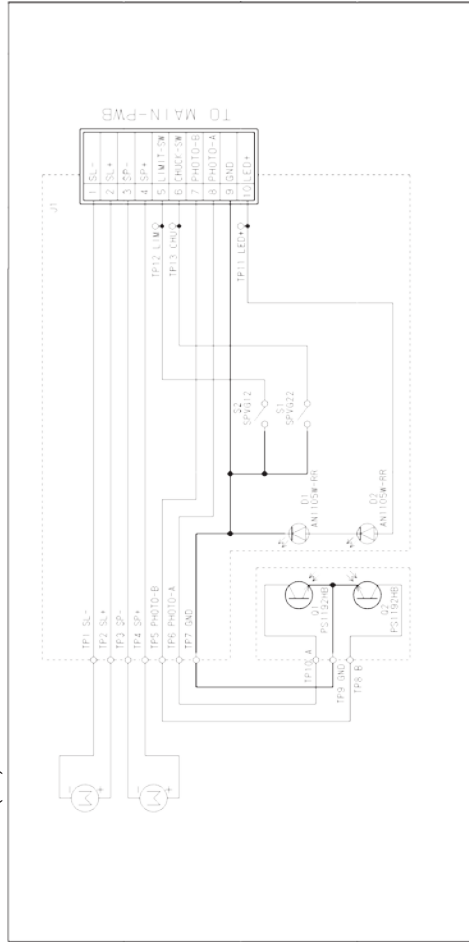


## EXPLODED VIEW / PARTS LIST

NO.	PART NO.	DESCRIPTION	Q'TY	NO.	PART NO.	DESCRIPTION	Q'TY
1	966-1722-21	SH-RACK-ASSY	1	42	621-1748-20	POWER GEAR A	1
2	969-0075-30	PICKUP-ASSY	1	43	621-1749-20	POWER GEAR B	1
3	-----	SENSOR-PWB-ASSY(5000AI-95)	1	44	621-1750-20	POWER GEAR C	1
4	-----	MAIN-PWB-ASSY(5024BI-97)	1	45	621-1751-20	POWER GEAR D	1
5	-----	DC-MOTOR SP(153700-020)	1	46	621-1752-20	DISC STOPPER	1
6	-----	DC-MOTOR SL(152803-020)	1	47	621-1753-20	CLAMPER RING	1
7	345-5476-20	CUSHION RUBBER	1	48	621-1754-21	GEAR BASE	1
8	620-1023-23	CLAMPER PLATE	1	49	622-1570-21	DAMPER PIN	3
9	620-1026-21	SPRING PLATE	1	50	622-1571-21	ROLLER SHAFT	1
10	620-1596-23	CLAMPER LINK	1	51	624-3059-00	LEAD SCREW	1
11	620-1862-20	UPPER CHASSIS	1	52	629-0086-20	DAMPER F	2
12	620-1867-20	DRIVE PLATE	1	53	629-0087-20	DAMPER R	1
13	620-1752-20	SENSOR ARM	1	54	714-2003-8B	MACHIN SCREW	2
14	620-1753-20	ID-LOCK PLATE	1	55	716-1507-01	SCREW	3
15	620-1868-20	LOWER CHASSIS	1	56	716-1670-01	SPECIAL SCREW	4
16	-----	MOTOR GEAR(060721-621)	1	57	716-1733-01	SCREW	2
17	621-0608-21	SECOND GEAR	1	58	716-3469-01	SPECIAL SCREW	2
18	621-0609-21	BASE GEAR	1	59	716-3473-01	SPECIAL SCREW	1
19	621-0610-21	IDLE GEAR A	1	60	716-3551-00	SPECIAL SCREW	2
20	621-0611-21	IDLE GEAR B	1	61	750-6797-20	ROLLER SPRING L	1
21	621-0612-22	ROLLER GEAR A	1	62	750-6798-20	ROLLER SPRING R	1
22	621-0620-20	THREAD GEAR A	1	63	750-7865-20	SHIFT SPRING	1
23	621-0621-20	THREAD GEAR B	1	64	750-7866-20	RACK SPRING	1
24	621-0623-24	LS-HOLDER	1	65	750-7867-20	CLAMPER SPRING	1
25	621-0624-22	GUIDE RAIL	1	66	750-7868-20	ID-LOCK SPRING	1
26	-----	TURN TABLE(063820-621)	1	67	750-7869-20	SENSOR SPRING	1
27	621-0711-21	LOADING ROLLER	2	68	750-7870-20	DR-SPRING F	2
28	621-0718-21	ROLLER GUIDE	1	69	750-7871-20	DR-SPRING RA	1
29	621-0719-20	ROLLER GEAR	1	70	750-7872-20	DR-SPRING RB	1
30	621-0720-20	ROLLER GEAR C	1	71	750-7873-20	DR-SPRING C	1
31	621-0721-20	ROLLER GEAR D	1	72	780-2025-00	SCREW	3
32	621-0728-20	STOPPER LINK	1	73	781-1730-00	SCREW	1
33	621-1719-22	IDLE CASE	1	74	803-4906-60	VINYL-COAT-WIRE	1
34	621-1726-21	ROLLER SLEEVE	2	75	816-2542-01	FLAT WIRE	1
35	621-1729-21	SH-BASE	1	76	816-2590-00	SPECIAL LEAD	1
36	621-1742-20	UPPER GUIDE	1	77	816-2591-00	SPECIAL LEAD	1
37	621-1743-20	SHIFT LEVER	1	78	816-2592-00	SPECIAL LEAD	1
38	621-1744-20	RACK	1	79	816-2593-00	SPECIAL LEAD	1
39	621-1745-20	LOCK ARM L	1	80	716-3635-00	SPECIAL SCREW	1
40	621-1746-20	LOCK ARM R	1	81	SMA-183-100	SLED MOTOR ASSY	1
41	621-1747-20	GEAR COVER	1	82	SMA-200-100	SPINDLE MOTOR ASSY	1

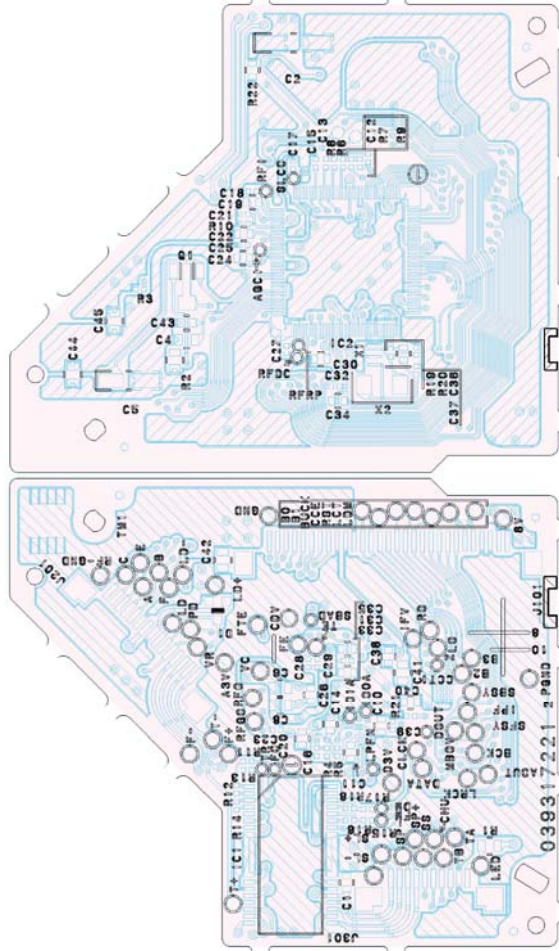


SENSOR PWB(B2) section

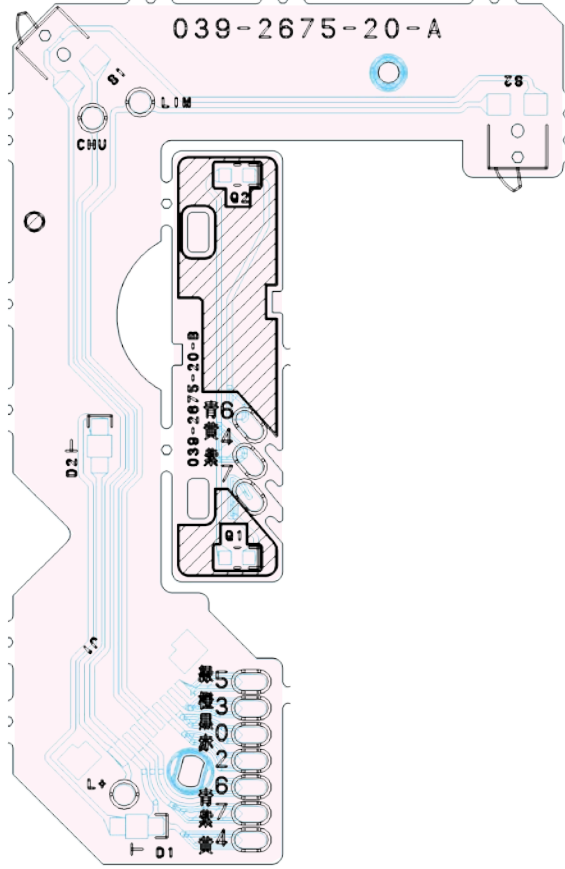


PRINTED WIRING BOARD

MAIN PWB(B1) section



SENSOR PWB(B2) section



ELECTRICAL PARTS LIST

MAIN PWB(B1) section

REF No.	PART No.	DESCRIPTION	REF No.	PART No.	DESCRIPTION	REF No.	PART No.	DESCRIPTION
C1	168-1042-78	16V 0.1uF	C30	168-1042-78	16V 0.1uF	R2	117-1001-15	1/8W 10 ohm
C2	163-1073-35	16V 100uF	C31	046-4712-58	470pF B	R3	033-2211-15	1/10W 220 ohm
C4	178-1052-78	1uF	C32	046-4712-58	470pF B	R5	033-0000-05	1/10W 0 ohm
C5	042-0560-85	6.3V 100uF	C33	168-1042-78	16V 0.1uF	R6	033-5621-15	1/10W 5.6k ohm
C6	178-1052-78	1uF	C34	168-4732-78	0.047uF K	R7	033-4731-15	1/10W 47k ohm
C8	178-1052-78	1uF	C35	168-4732-78	0.047uF K	R8	033-3341-15	1/10W 330k ohm
C10	168-1042-78	16V 0.1uF	C36	045-1007-50	100pF CH	R9	033-2231-15	1/10W 22k ohm
C11	168-1042-78	16V 0.1uF	C37	045-1007-50	100pF CH	R10	033-2231-15	1/10W 22k ohm
C12	045-4701-50	470pF CH	C38	168-1042-78	16V 0.1uF	R11	033-2731-15	1/10W 27k ohm
C13	046-1532-78	0.015uF B	C39	046-5622-58	5600pF B	R12	033-4731-15	1/10W 47k ohm
C14	168-1042-78	16V 0.1uF	C40	168-1042-78	16V 0.1uF	R13	033-2731-15	1/10W 27k ohm
C15	046-1032-78	0.01uF B	C42	176-6801-50	680pF CH	R14	033-1531-15	1/10W 15k ohm
C17	046-4722-58	4700pF B	C43	166-6801-50	880pF CH	R15	033-2731-15	1/10W 27k ohm
C18	046-1522-58	1500pF B	C44	176-6801-50	880pF CH	R16	033-8231-15	1/10W 82k ohm
C19	168-1042-78	16V 0.1uF	C45	176-6801-50	880pF CH	R17	033-2731-15	1/10W 27k ohm
C20	168-1042-78	16V 0.1uF	CCT1	050-0140-63	1/32W 47k ohm x4J	R18	033-8231-15	1/10W 82k ohm
C21	046-6812-58	6800pF B	D1	001-0367-91	1SS226	R19	033-1051-15	1/10W 10 ohm
C22	168-1042-78	16V 0.1uF	IC1	051-6079-90	BA5630FP-E2	R20	119-0000-05	1/10W 0 ohm JW
C23	046-1532-78	0.015uF B	IC2	051-6399-90	TC94A15F	R22	119-0000-05	1/10W 0 ohm JW
C24	168-1042-78	16V 0.1uF	J101	074-1228-79	29P	TM1	073-0768-90	TERMINAL
C25	045-6801-50	680pF CH	J201	074-1138-65	15P	X2	061-3534-90	16.92MHZ
C26	168-1042-78	16V 0.1uF	J301	074-1138-60	10P	PWB	039-3172-21	PWB(WITHOUT COMPONENTS)
C27	046-3332-78	0.033uF B	Q1	131-1188-50	2SB1188PQR			
C29	046-5822-58	5800pF B	R1	117-6811-15	1/8W 680 ohm			

SENSOR PWB(B2) section

REF No.	PART No.	DESCRIPTION
D1	001-7058-90	AN1105W-RR
D2	001-7058-90	AN1105W-RR
J1	074-1138-60	10P
Q1	060-4015-91	PS1192HB
Q2	060-4015-91	PS1192HB
S1	073-7414-50	CHUCKING
S2	013-7413-50	LIMIT
PWB	039-2675-20	PWB(WITHOUT COMPONENTS)