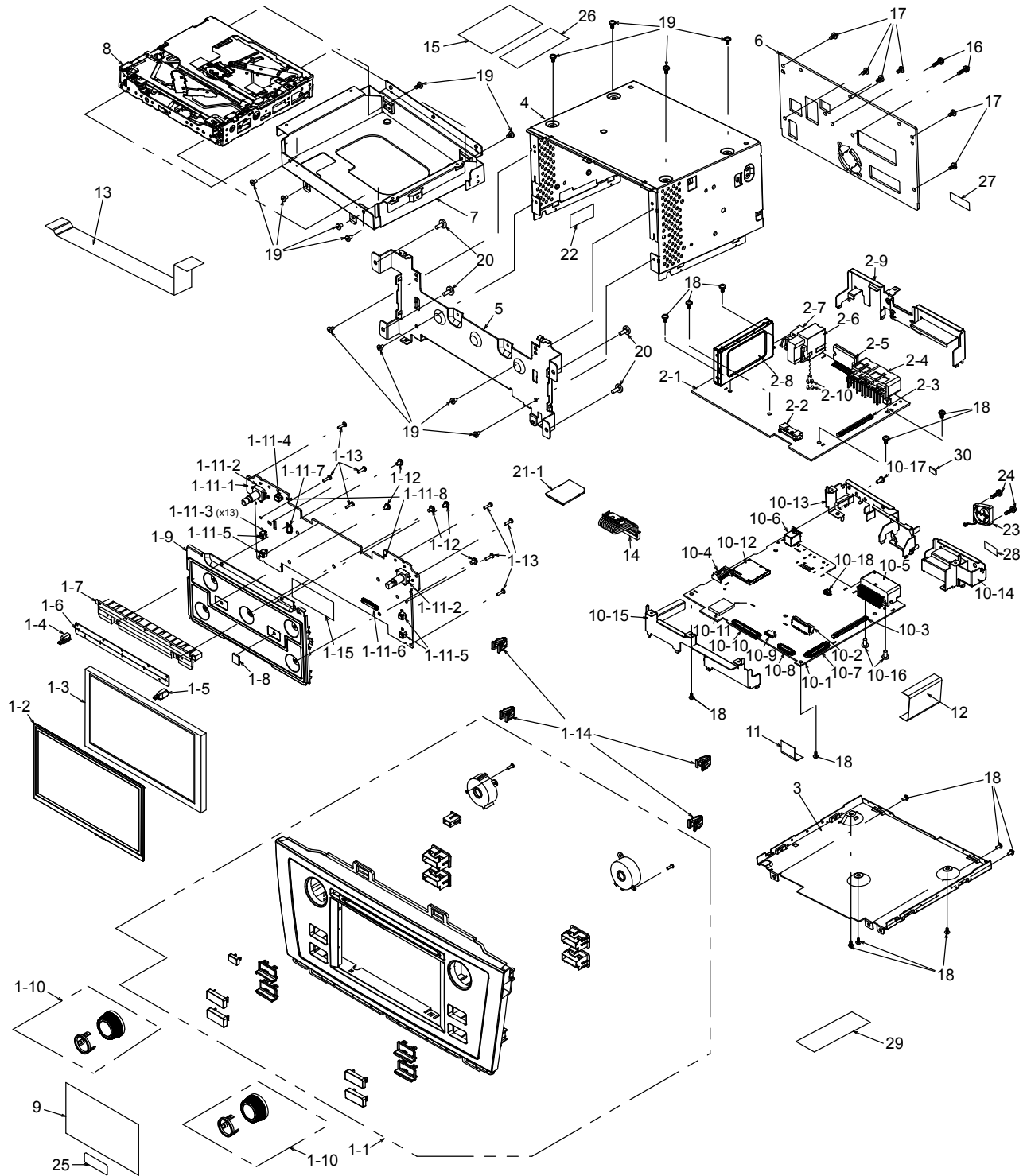


Exploded view



# EXPLODED VIEW / PARTS LIST

## Parts list

NO.	PART NO.	DESCRIPTION	Q'TY	NO.	PART NO.	DESCRIPTION	Q'TY
1	-----	*Unused number	-	10-2	076-6030-60	PLUG	1
1-1	940-8728-17	ES-ASSY(CB604UL)(for PF3636IA)	1	10-3	074-2248-80	OUTLET SOCKET (80P)	1
	940-8728-19	ES-ASSY(CB705CL)(for PF3636IB)	1	10-4	076-6023-07	PLUG (7P)	1
	940-8728-36	ES-ASSY(CB806CL)(for PF3636IC)	1	10-5	074-1302-28	OUTLET SOCKET (28P)	1
	940-8728-87	ES-ASSY(CB624UL)(for PF3689IA)	1	10-6	074-4105-00	OUTLET SOCKET (4P)	1
	940-8728-89	ES-ASSY(CB725UL)(for PF3689IB)	1	10-7	074-2248-40	OUTLET SOCKET (40P)	1
	940-8728-56	ES-ASSY(CB826UL)(for PF3689IC)	1	10-8	074-2248-30	OUTLET SOCKET (30P)	1
1-2	013-9745-00	TOUCH PANEL	1	10-9	074-2249-04	OUTLET SOCKET (4P)	1
1-3	379-0491-02	TFT	1	10-10	074-2248-60	OUTLET SOCKET (60P)	1
1-4	335-9524-02	GUIDE ILLUMI(L)	1	10-11	060-8162-90	BLUETOOTH MODULE	1
1-5	335-9525-02	GUIDE ILLUMI(R)	1	10-12	074-8023-51	OUTLET SOCKET (SD)	1
1-6	346-0314-01	LEATHER PART	1	10-13	331-5533-03	PRESSED PART (BRKT-L)	1
1-7	335-9523-01	MOLDED PART (DISC GUIDE)	1	10-14	331-5534-01	PRESSED PART (BRKT-R)	1
1-8	331-3038-50	EARTH PLATE	1	10-15	331-5586-01	PRESSED PART (BRKT-F)	1
1-9	331-5532-03	PRESSED PART (LCD HOLDER)	1	10-16	778-3006-00	TAP-SCREW	2
1-10	947-0834-01	KNOB-ASSY	2	10-17	714-2606-8B	MACHINE SCREW	1
1-11	-----	*Unused number	-	10-18	076-0569-02	PLUG (2P)	1
1-11-1	-----	SW PWB (428200-039)	1	11	816-3135-55	FLAT WIRE (30P)	1
1-11-2	016-0018-37	VR W/SHAFT	2	12	816-3105-55	FLAT WIRE (80P)	1
1-11-3	001-7141-90	DIODE (RED)	13	13	816-3167-57	FLAT WIRE (40P)	1
1-11-4	013-6202-52	TACT SWITCH (EJ)	1	14	854-4667-52	EXTENSION LEAD	1
1-11-5	013-6201-53	TACT SWITCH (KEY)	4	15	-----	SETPLATE (for PF3636IA)	1
1-11-6	074-2248-30	OUTLET SOCKET (30P)	1		-----	SETPLATE (for PF3636IB)	1
1-11-7	074-2240-60	OUTLET SOCKET (10P)	1		-----	SETPLATE (for PF3636IC)	1
1-11-8	001-7109-92	DIODE (RED)	2		-----	SETPLATE (for PF3689IA)	1
1-12	716-0878-50	SPECIAL SCREW	5		-----	SETPLATE (for PF3689IB)	1
1-13	716-0778-52	SPECIAL SCREW	8		-----	SETPLATE (for PF3689IC)	1
1-14	335-8017-00	GARNISH CLIP	4	16	714-2614-8B	MACHINE SCREW	2
1-15	-----	*Not mounted(INSULATOR)	-	17	714-2606-8B	MACHINE SCREW	6
2	-----	*Unused number	-	18	716-0878-50	SPECIAL SCREW	13
2-1	-----	MAIN PWB (425100-039)	1	19	714-2604-8B	MACHINE SCREW	14
2-2	076-6021-60	PLUG	1	20	716-1553-50	SPECIAL SCREW	4
2-3	074-2248-80	OUTLET SOCKET (80P)	1	21	-----	*Unused number	-
2-4	074-1261-00	OUTLET SOCKET (16P)	1	21-1	-----	SD CARD (002310-065)	1
2-5	051-2077-00	IC (TB2959HQ)	1	22	347-9373-00	PAPER PART (TAPE)	1
2-6	092-2260-00	ANT-RECEPT (RADIO)	1	23	020-3066-00	DC-MOTOR	1
2-7	-----	*Not mounted (ANT-RECEPT)	-	24	732-2614-1B	SEMS SCREW	2
2-8	-----	*Not mounted (XM-TUNER)	-	25	-----	*Not mounted(XM LABEL)	-
2-9	331-5535-04	BRKT-C	1	26	-----	LABEL(HD authentication)	1
2-10	778-3006-00	TAP-SCREW	2	27	-----	LABEL(BR60)(for PF3636IA)	1
3	311-2084-11	LOWER CASE	1		-----	LABEL(BR70)(for PF3636IB)	1
4	310-2026-12	UPPER CASE	1		-----	LABEL(SD80)(for PF3636IC)	1
5	309-1976-02	FRONT PLATE	1		-----	LABEL(BR62)(for PF3689IA)	1
6	313-2194-12	HEAT SINK	1		-----	LABEL(BR72)(for PF3689IB)	1
7	331-5531-01	PRESSED PART (MECH BRKT)	1		-----	LABEL(SD82)(for PF3689IC)	1
8	929-5400-80	CD-MECH-MODULE	1	28	347-9381-00	PROTECT-SHEET	1
9	347-9449-02	PROTECTOR	1	29	-----	*Not mounted(LABEL)	-
10	-----	*Unused number	-	30	-----	*Not mounted(GASKET)	-
10-1	-----	NAVI PWB (426900-039)	1				

\* The software of each model is different.

\* Refer to the following service manuals.

No. E7622-01 : Assembly Instructions

No. E7622-02 : Electrical Pars List / Circuit Diagram / Printed Wiring Board