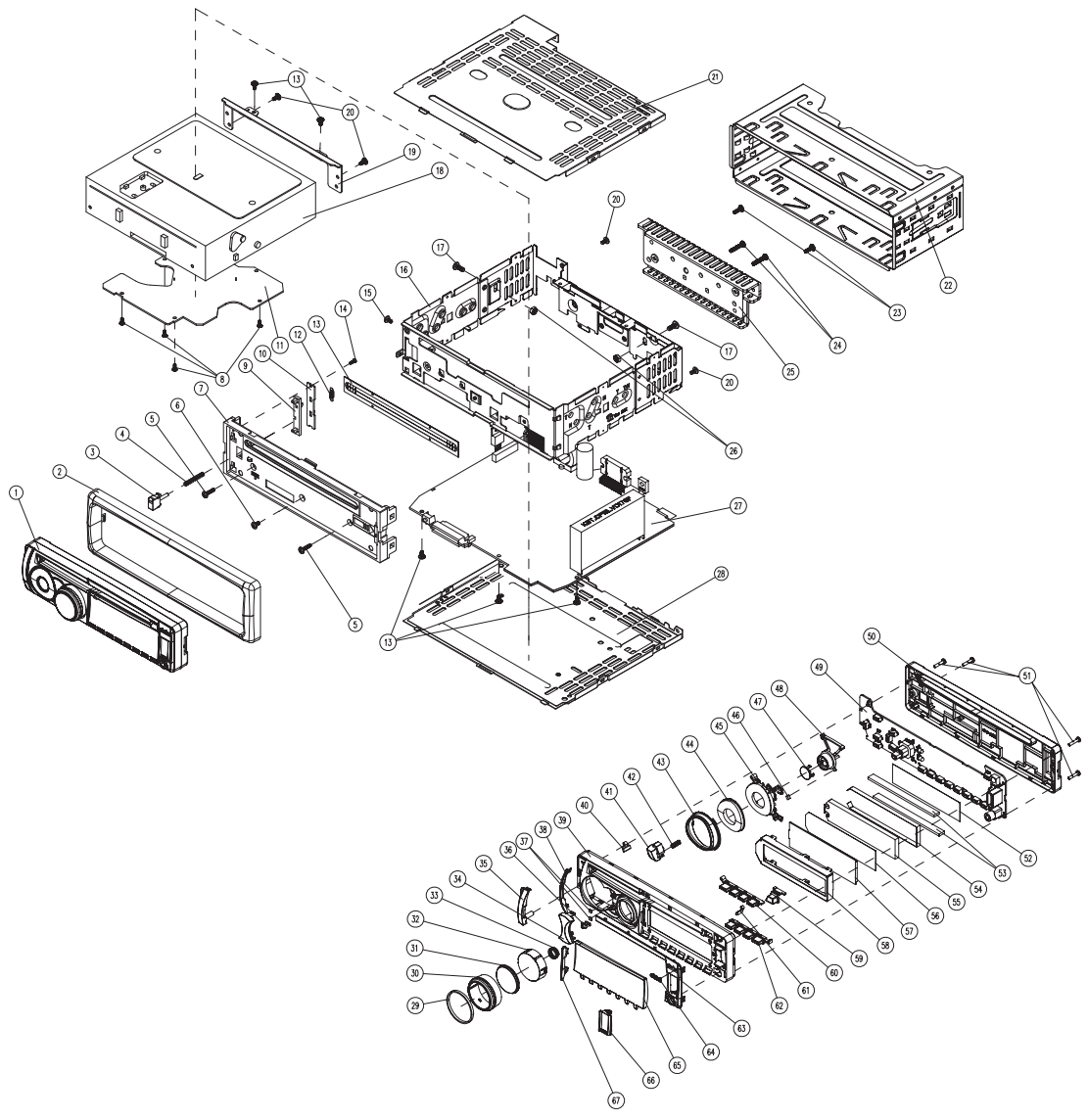


5、Exploded view of general assembly



Item No.	Part No.	Description	QTY	Remark
67	12127000345014	CM1521 R BOT DECO-RING,ABS,PL1+T3	1	
66	1213000133000	CM1515LSD COVER,PC	1	
65	121220000510010	CM1521LSD PANNEL,BLK	1	
64	14129061295017	CM1515MMO BAKELITE,ABS+SL,CLAMON	1	
63	14127000340016	CM1521MMR PANEL DECO-BLOCK,PC	1	
62	121280000474000	CM1521,ROOF CDM U-GUIDE,PC	1	
61	12123020257018	CM1521MMR BUTTON 1,PC,GEN,HLK	1	
60	12123020257018	CM1521MMR BUTTON 1,PC,GEN,HLK	1	
59	12123020274018	CM1521,LEFT BUTTON,PC,GEN,HLK	1	
58	14100000143	CM1515LSD COVER,SPE,TO,5	1	
57	14340000204	LOGO,27101,VA,NEGATIVE,BLACK-MASK	1	
56	12140000404	CM1515LSDER SHEET,PC,TO,15	1	
55	141290000302000	CM1515LSD U-GUIDE,PANNA	1	
54	12140000407	CM1515U-SHIELD SWELTH,FR,TO,10	1	
53	12140000488	CM1515L,ZERBA STRIP,PS,2,6	2	
52	12140000405	CM1515LSD B-SHFT SHEET,PC,TO,15	1	
51	121340000784	SCREEN,PP,BLACK,ZINC,PC,10	4	
50	121210001128000	CM1521,REAR PANEL,PC+ABS	1	
49		CM1522 KB CMT ASSM	1	
48	12124000092014	CM151,LOC. BUTTON BRACKET,ABS,1+3	1	
47	121230302567018	CM1521,LOC. BUTTON,PC,GEN,HLK	1	
46	12140000104	CM1521,FRONT PANEL,PC	1	
45	121280000472000	CM1521,ARMY BUT U-GUIDE,PC	1	
44	121230202568018	CM1521,LINE/BVA/PP/NE BUTTON,PANNA,BLK	1	
43	12127000341014	CM1521,MMR BUTTON DECO-RING,ABS,PL1+3	1	
42	121230200605	CM1521,SPRING FOR OPEN,PP,TO,25	1	
41	12123020257018	CM1521,MMR BUTTON,ABS	1	
40	121280000473000	CM1521,LEFT CDM U-GUIDE,PC	1	
39	121210001127000	CM1521,FRONT PANNEL,PC	1	
38	12127000342014	CM1521,LEFT DECO-RING,ABS,PL1+3	1	
37	121410000407	CM1521,RUBBER WALZ,4,2,4,1	2	
36	12127000343014	CM1521,ROOF TOP DECO-RING,ABS,PL1+3	1	
35	121270000440000	CM1521,LEFT PANEL DECO-BLOCK,ABS	1	
34	121230202571018	CM1521,PS ALU,ROUND BUT,PC,GEN,HLK	1	
33	121230202560	CM1521,SPRING FOR VCL,MMR,PP,TO,17	1	
32	121280000471000	CM1521,LOC. U-GUIDE,PC	1	
31	12123020256010	CM1521,LOC. DECO-BLOCK,PANNA,BLK	1	
30	121230202569014	CM1521,VAL. INDICATOR,ABS,PL1+3	1	
29	121270000348000	CM1521,RUBBER RING,RUBBER	1	
28	121200002430	DM12,MMR BOT COVER,INSULATING,SEC,TO,15	1	
27	84320015208004	CM1522 KB M ASSM	1	
26	121200002023	REMOVAL WHEEL,ZINC,AL,PS,5	2	
25	121210000268	DM12,VAL,INDICATOR,VAL	1	注意:按钮
24	121106070015	SCREW,BLUE,ZINC,AL,PH4	2	注意:按钮
23	121104070008	SCREW,BLUE,ZINC,AL,PH4	2	
22	141000003016	CM1521,ROOF SHEET,TO,25	1	
21	12100001854	DM12,HALTER,CM,SEC,TO,15	1	
20	121104070007	SCREW,BLUE,ZINC,AL,PS	4	按钮:按钮,按钮,按钮,按钮
19	121200001864	DM12,HALTER INT BACK,SEC,TO,15	1	
18	144840002084	DECO,3-CON,17,MMR,ACT,PP,TO,10,CLAMON	1	
17	121100010209	SCREW,BLUE,ZINC,AL,PS	2	
16	121000102185	CM1515,FRAME,SEC,TO,10,MMR	1	注意:
15	121106070011	SCREW,BLUE,ZINC,AL,PS	6	按钮:按钮,按钮,按钮,按钮,按钮,按钮
14	121104000185	SCREW,PP,BLACK,ZINC,AL,PS	1	按钮:按钮,按钮
13	121140000127	DM12,MMR,ROOF,COVER,GEN,PP,MMR,MMR	1	
12	121033010145	CM1521,SPRING LOCK,ROOF,PAN,TO,15	1	
11		CM1522 KB M ASSM	1	
10	121000001004	CM12,AL,ROOFET FOR LOCK,SEC,TO,15	1	
9	12120001074000	DM12,VAL,LOCKER,PAN	1	
8	121104050023	SCREW,BLUE,ZINC,AL,PS	4	
7	12140000082000	CM1521,VAL. INDICATOR,ABS	1	
6	121400002054	SCREW,BLUE,ZINC,AL,PS	1	按钮:按钮,按钮
5	121230202560344	CM1516,SPRING FOR OPEN,CP,PP,TO,15	1	
4	121400002089	SCREW,BLUE,ZINC,AL,PH10	2	按钮:按钮,按钮,按钮,按钮,按钮,按钮
3	141290010848000	CM1521,LOC. PANEL,ABS	1	
2	121270003470000	CM1521,LOC. PANEL,ABS	1	
1	84320015208054	CM1522 KB M ASSM	1	

9、Assembly parts for CZ200

Quotation of assembly parts for CZ201							
							Updated: 3rd, November 2010
NO.	Clarion Model	Part NO #	Qty	MOQ	Description	Lead time(day)	Assembly parts Picture
1	9482CMU1522194A	843CMU1522MB015	1	30	MB MI ASSM	TBC	
2	9482CMU1522194A	843CMU1522SB013	1	30	SB MI ASSM	TBC	
3	9482CMU1522194A	841CM1511PL020	1	30	CM1521 cable connector	TBC	
4	9482CMU1522194A	843CMU1522KB004	1	30	KB MI ASSM	TBC	
5	9482CMU1522194A	121270000347000	1	30	Outer Escutcheon	TBC	
6	9482CMU1522194A	848DVU1284SS010	1	30	Lower Cover	TBC	
7	9482CMU1522194A	141000001854	1	30	Upper Cover (Mountain Bracket)	TBC	
8	9482CMU1522194A	121240000983000	1	30	Inner Escutcheon Assy	TBC	
9	9482CMU1522194A	144845010090	1	30	Antenna Connector	TBC	
10	9482CMU1522194A	123830001082	1	30	WIRE HARNES	TBC	
11	9482CMU1522194A	141045000200	2	200	Lock Screw	TBC	
12	9482CMU1522194A	121090000327	2	200	L-KEY	TBC	
13	9482CMU1522194A	843CMU1522RM000	1	30	REMOTE CONTROL	TBC	