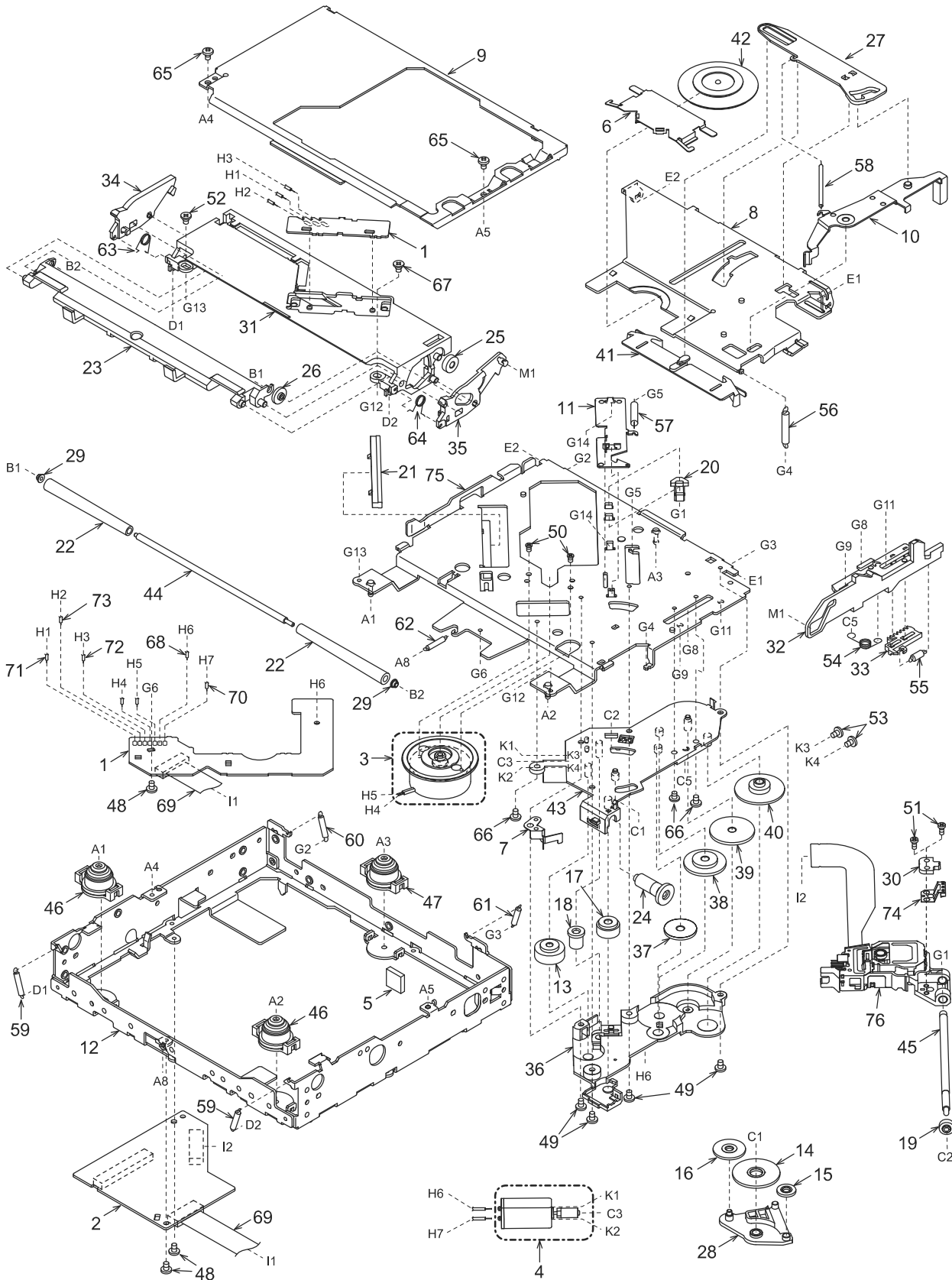


NO.	PART NO.	DESCRIPTION	Q'TY
1	816-4027-50	FLAT WIRE	1
2	311-1915-00	LOWER CASE	1
3	313-1963-00	HEAT SINK	1
4	309-0820-00	ES PLATE	1
5	714-2603-8H	MACHINE SCREW	2
6	-----	MAIN-PWB-ASSY(2875E7-53)	1
6-1	-----	MAIN PWB(365800-039)	1
6-2	331-3458-00	TR HOLDER	1
6-3	103-2012-00	TRANSISTOR	3
6-4	331-4133-00	CONN HOLDER	1
6-5	331-4132-00	IC HOLDER(24V)	1
6-6	092-0702-50	ANT-RECEPT	1
6-7	331-3444-20	ANT HOLDER	1
6-8	051-1805-00	IC	2
6-9	941-0215-73	TUNER PACK	1
6-10	074-1061-00	OUTLET SOCKET	1
6-11	074-1192-26	OUTLET SOCKET	1
6-12	076-0540-16	PLUG	1
6-13	714-2606-8B	MACHINE SCREW	1
6-14	716-0878-50	SPECIAL SCREW	2
6-15	001-7048-94	DIODE	6
6-16	073-0762-90	TERMINAL	4
6-17	331-4312-01	EARTH PLATE	1
7	-----	PANEL-ASSY(2875F0-45)	1
7-1	380-5660-00	KNOB	1
7-2	940-8121-01	ESCUTCHEON-ASSY	1
7-3	-----	SW-PWB-ASSY(2694C7-51)	1
7-3-1	-----	SW PWB(348600-039)	1
7-3-2	013-6305-51	SWITCH	15
7-3-3	016-0018-15	VR W/SHAFT	1

NO.	PART NO.	DESCRIPTION	Q'TY
7-3-4	001-7048-94	DIODE	18
7-3-5	074-1151-16	OUTLET SOCKET	1
7-4	716-0778-51	SPECIAL SCREW	3
7-5	345-8717-20	TRIM RUBBER(PI2875BD)	1
7-6	-	(TRIM PLATE) *N/A	-
7-7	345-8718-20	TRIM RUBBER(PI2875BD)	1
8	310-1761-20	UPPER CASE	1
9	331-4183-00	MECH BRKT	1
10	929-5002-80	DIGITAL-MECH	1
11	714-2606-8B	MACHINE SCREW	12
12	714-2610-8H	MACHINE SCREW	3
13	716-0878-50	SPECIAL SCREW	6
14	286-3678-00	SET-PLATE(PI2875BC/D)	1
14	276-0431-01	SET-PLATE(PI2875HB)	1
15	-	(LABEL) *N/A	-
16	-	(LABEL) *N/A	-
17	285-1560-37	GUIDE LABEL(PI2875BC)	1
17	285-1560-41	GUIDE LABEL(PI2875BD)	1
18	347-8097-00	FILM	1
19	-	(SETPLATE) *N/A	-
20	-	(GASKET) *N/A	-
21	-	(EXTENSION LEAD) *N/A	-
22	-	(LABEL) *N/A	-
23	331-4134-00	LCD COVER	1
24	347-7813-00	FILM(LCD)	1
25	379-1360-30	INDICATOR	1
26	347-7812-00	LCD FILM	1
27	335-7708-00	ILL-PLATE(LCD)	1
28	335-7707-00	LCD HOLDER	1

EXPLODED VIEW/PARTS LIST



NO.	PART NO.	DESCRIPTION	Q'TY	NO.	PART NO.	DESCRIPTION	Q'TY
1	-----	SENSOR PWB	1	39	621-1750-20	POWER GEAR C	1
2	-----	CD PWB	1	40	621-1751-20	POWER GEAR D	1
3	SMA-182-100	SPINDLE MOTOR-ASSY	1	41	621-1752-20	DISC STOPPER	1
4	SMA-183-100	SLED MOTOR-ASSY	1	42	621-1753-20	CLAMPER RING	1
5	345-5476-20	CUSHION RUBBER	1	43	621-1754-20	GEAR BASE	1
6	620-1023-23	CLAMPER PLATE	1	44	622-1571-21	ROLLER SHAFT	1
7	620-1026-21	SPRING PLATE	1	45	624-0020-00	LEAD SCREW	1
8	620-1596-23	CLAMPER LINK	1	46	629-0086-20	DAMPER F	2
9	620-1598-22	UPPER CHASSIS	1	47	629-0087-20	DAMPER R	1
10	620-1752-20	SENSOR ARM	1	48	716-1507-01	SCREW(M2x3)	3
11	620-1753-20	ID-LOCK PLATE	1	49	716-1670-01	SCREW(M2x4)	4
12	620-1754-20	LOWER CHASSIS	1	50	716-1733-01	SCREW(M1.7x2.3)	2
13	621-0608-21	SECOND GEAR	1	51	716-3469-01	SCREW(1.7x4)	2
14	621-0609-20	BASE GEAR	1	52	716-3473-01	SCREW(M2x3)	1
15	621-0610-20	IDLE GEAR A	1	53	716-3551-00	SCREW(M1.4x2.5)	2
16	621-0611-20	IDLE GEAR B	1	54	750-3467-21	SHIFT SPRING	1
17	621-0612-21	ROLLER GEAR A	1	55	750-3468-20	RACK SPRING	1
18	621-0620-20	THREAD GEAR A	1	56	750-3469-20	CLAMPER SPRING	1
19	621-0621-20	THREAD GEAR B	1	57	750-3470-20	ID-LOCK SPRING	1
20	621-0623-23	LS-HOLDER	1	58	750-3471-20	SENSOR SPRING	1
21	621-0624-22	GUIDE RAIL	1	59	750-3472-21	DR-SPRING F	2
22	621-0711-20	LOADING ROLLER	2	60	750-3473-20	DR-SPRING RA	1
23	621-0718-21	ROLLER GUIDE	1	61	750-3474-20	DR-SPRING RB	1
24	621-0719-20	ROLLER GEAR	1	62	750-3475-21	DR-SPRING C	1
25	621-0720-20	ROLLER GEAR C	1	63	750-6797-20	ROLLER SPRING L	1
26	621-0721-20	ROLLER GEAR D	1	64	750-6798-20	ROLLER SPRING R	1
27	621-0728-20	STOPPER LINK	1	65	714-2003-8B	SCREW(M2x3)	2
28	621-1719-20	IDLE CASE	1	66	780-2025-00	SCREW(M2x2.5)	3
29	621-1726-20	ROLLER SLEEVE	2	67	781-1730-00	SCREW(M1.7x3)	1
30	621-1729-20	SH-BASE	1	68	803-4906-60	VINYL-COAT-WIRE(ORG)	1
31	621-1742-20	UPPER GUIDE	1	69	816-2542-01	FLAT WIRE	1
32	621-1743-20	SHIFT LEVER	1	70	816-2590-00	SPECIAL LEAD(GRN)	1
33	621-1744-20	RACK	1	71	816-2591-00	SPECIAL LEAD(YEL)	1
34	621-1745-20	LOCK ARM L	1	72	816-2592-00	SPECIAL LEAD(BLUE)	1
35	621-1746-20	LOCK ARM R	1	73	816-2593-00	SPECIAL LEAD(PUR)	1
36	621-1747-20	GEAR COVER	1	74	966-1722-20	SH-RACK-ASSY	1
37	621-1748-20	POWER GEAR A	1	75	966-1743-21	DRIVE-PLT-ASSY	1
38	621-1749-20	POWER GEAR B	1	76	969-0071-30	PICKUP-ASSY	1

ELECTRICAL PARTS LIST

CD PWB(BM1) section

REF No.	PART No.	DESCRIPTION	REF No.	PART No.	DESCRIPTION	REF No.	PART No.	DESCRIPTION
C1	168-1042-78	16V 0.1uF	C35	046-6812-58	680pF	R2	117-1001-15	1/8W 10 ohm
C3	163-2273-05	4V220uF	C36	168-1042-78	16V 0.1uF	R9	033-2211-15	1/10W 220 ohm
C4	168-1042-78	16V 0.1uF	C37	168-1042-78	16V 0.1uF	R11	033-1051-15	1/10W 1M ohm
C5	163-1073-35	16V100uF	C38	046-1522-58	1500pF	R12	119-2221-15	1/10W 2.2k ohm
C6	163-1073-35	16V100uF	C39	046-4722-58	4700pF	R13	033-2211-15	1/10W 220 ohm
C7	168-1042-78	16V 0.1uF	C40	046-1032-78	0.01uF	R14	033-2211-15	1/10W 220 ohm
C9	178-1052-78	1uF	C41	046-1532-78	0.015uF	R16	033-2231-15	1/10W 22k ohm
C10	042-0560-85	6.3V 100uF	C43	168-1042-78	16V 0.1uF	R17	033-1011-15	1/10W 100 ohm
C11	046-4712-58	470pF	C45	045-6097-50	6pF	R18	033-3341-15	1/10W 330k ohm
C12	178-1052-78	1uF	C47	045-4701-50	47pF	R19	033-5621-15	1/10W 5.6k ohm
C13	046-4712-58	470pF	C48	168-1042-78	16V 0.1uF	R21	033-2231-15	1/10W 22k ohm
C15	168-1042-78	16V 0.1uF	C49	168-1042-78	16V 0.1uF	R22	033-4731-15	1/10W 47k ohm
C16	168-4732-78	0.047uF K	C50	042-0666-00	12.5V 22uF	R24	033-1041-15	1/10W 100k ohm
C17	168-4732-78	0.047uF K	C51	046-5622-58	5600pF	R26	033-1531-15	1/10W 15k ohm
C18	168-1042-78	16V 0.1uF	C52	178-1052-78	1uF	R27	033-4731-15	1/10W 47k ohm
C19	168-1042-78	16V 0.1uF	C53	045-1007-50	10pF	R28	033-1831-15	1/10W 18k ohm
C21	046-6822-58	6800pF	C54	045-1007-50	10pF	R29	033-6821-15	1/10W 6.8k ohm
C22	046-3332-78	0.033uF	C55	178-1052-78	1uF	R30	033-8231-15	1/10W 82k ohm
C24	178-1052-78	1uF	CCT2	050-0140-63	1/32W 47k ohm x4J	R31	033-8231-15	1/10W 82k ohm
C25	168-1042-78	16V 0.1uF	D1	001-0367-91	1SS226	R32	119-1001-15	1/10W 10 ohm
C26	168-1042-78	16V 0.1uF	IC1	051-6071-08	BA5825FP-E2	R33	033-2731-15	1/10W 27k ohm
C28	168-1042-78	16V 0.1uF	IC2	051-6399-00	TC94A15F	R34	033-2731-15	1/10W 27k ohm
C29	168-1042-78	16V 0.1uF	J101	074-1228-76	26P	R35	033-2731-15	1/10W 27k ohm
C30	045-6801-50	68pF	J201	074-1138-65	15P	R36	033-2731-15	1/10W 27k ohm
C31	168-1042-78	16V 0.1uF	J301	074-1138-60	10P	R37	032-0162-50	1/10W 0.51 ohm
C32	168-1042-78	16V 0.1uF	Q1	131-1188-50	2SB1188PQR	X2	061-3534-90	16.92MHz
C33	046-1532-78	0.015uF	Q2	131-1188-50	2SB1188PQR	PWB	039-2435-20	PWB(WITHOUT COMPONENT)
C34	168-1042-78	16V 0.1uF	R1	117-6811-15	1/8W 680 ohm			

Sensor PWB(BM2) section

REF No.	PART No.	DESCRIPTION	REF No.	PART No.	DESCRIPTION	REF No.	PART No.	DESCRIPTION
D1	001-7058-90	AN1105W-RR	Q1	060-4015-91	PS1192HB	S2	013-7413-50	LIMIT
D2	001-7058-90	AN1105W-RR	Q2	060-4015-91	PS1192HB	PWB	039-2675-20	PWB(WITHOUT COMPONENT)
J1	074-1138-60	10P	S1	013-7414-50	CHUCKING			