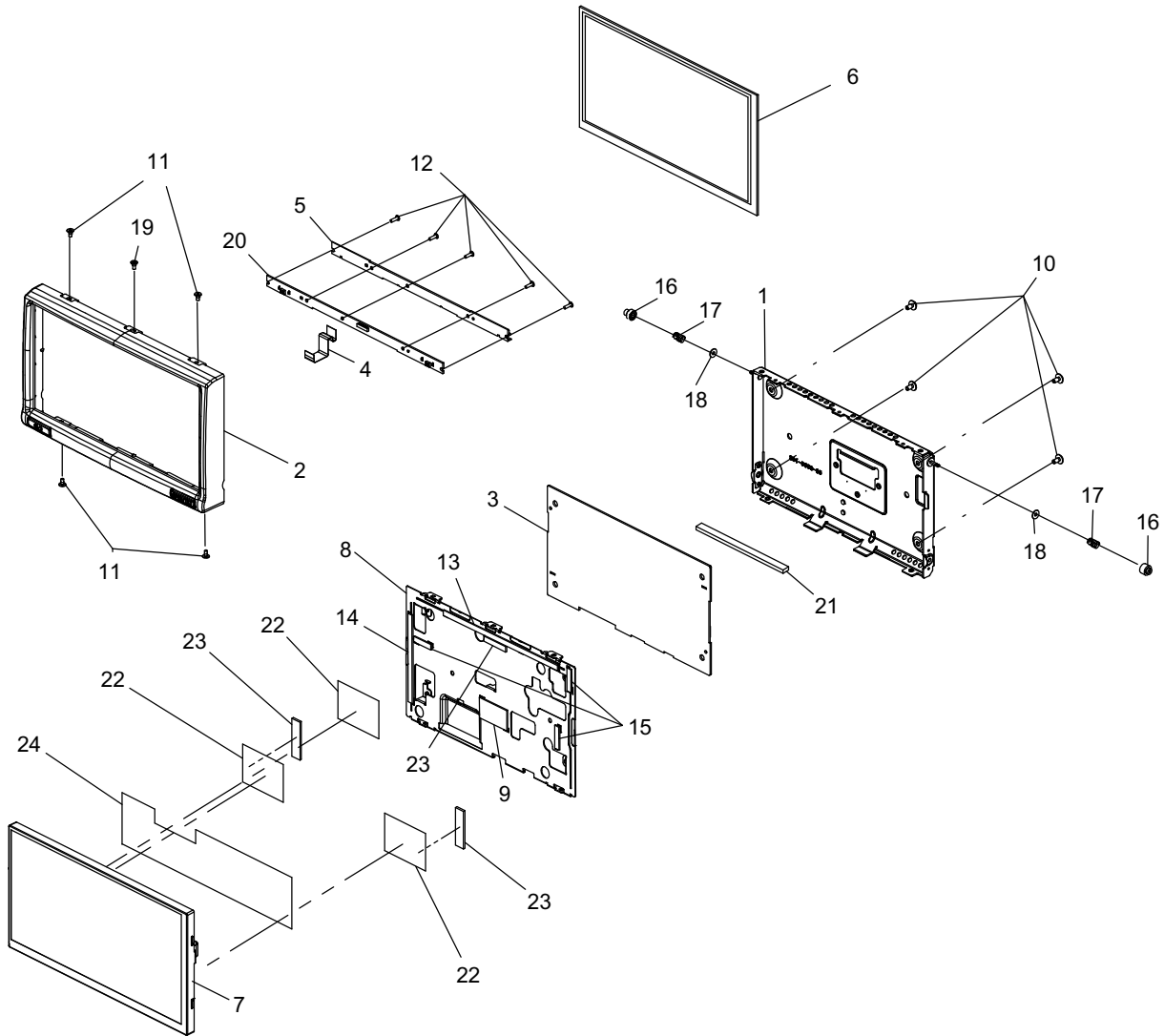


EXPLODED VIEW / PARTS LIST

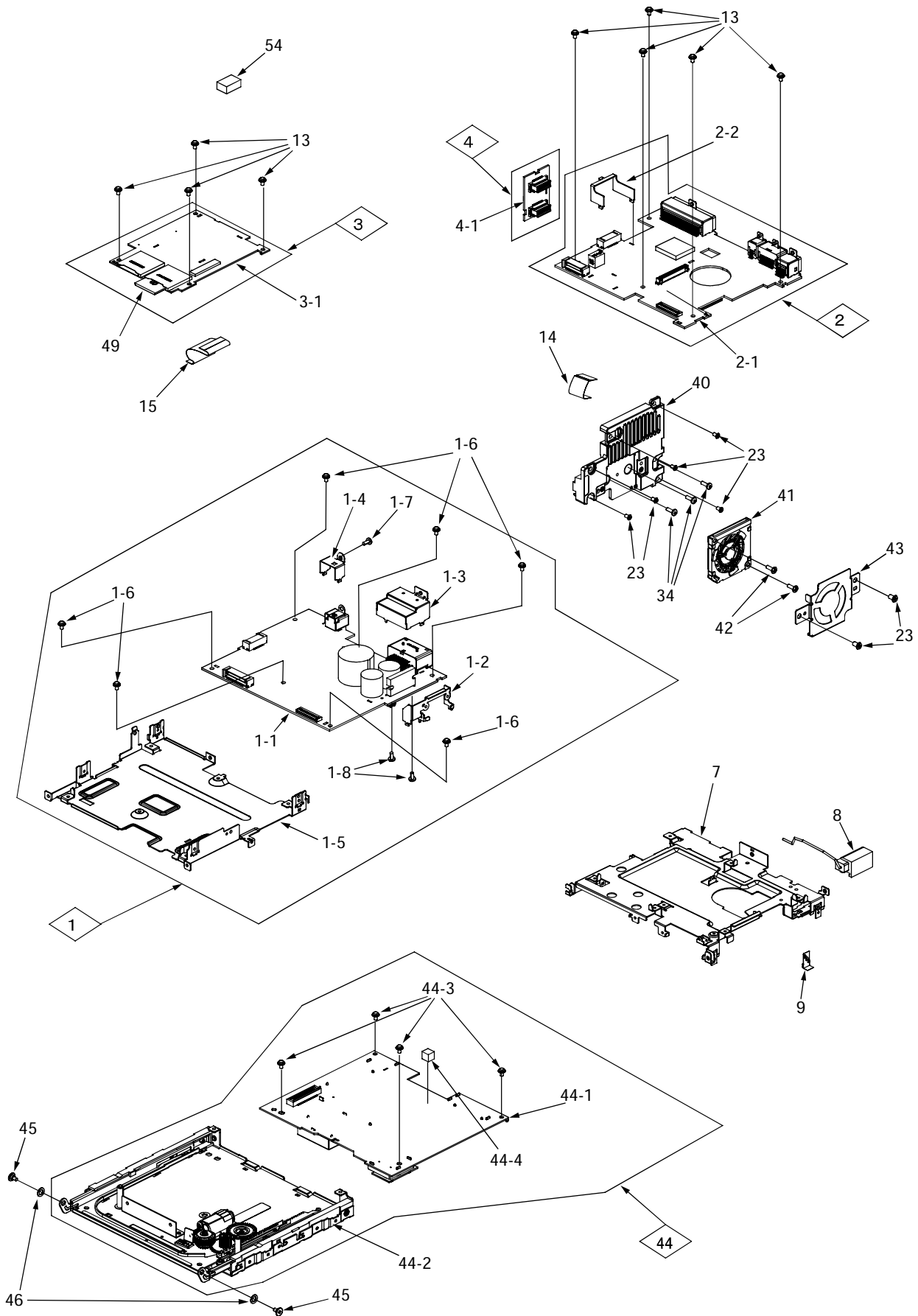
Panel section

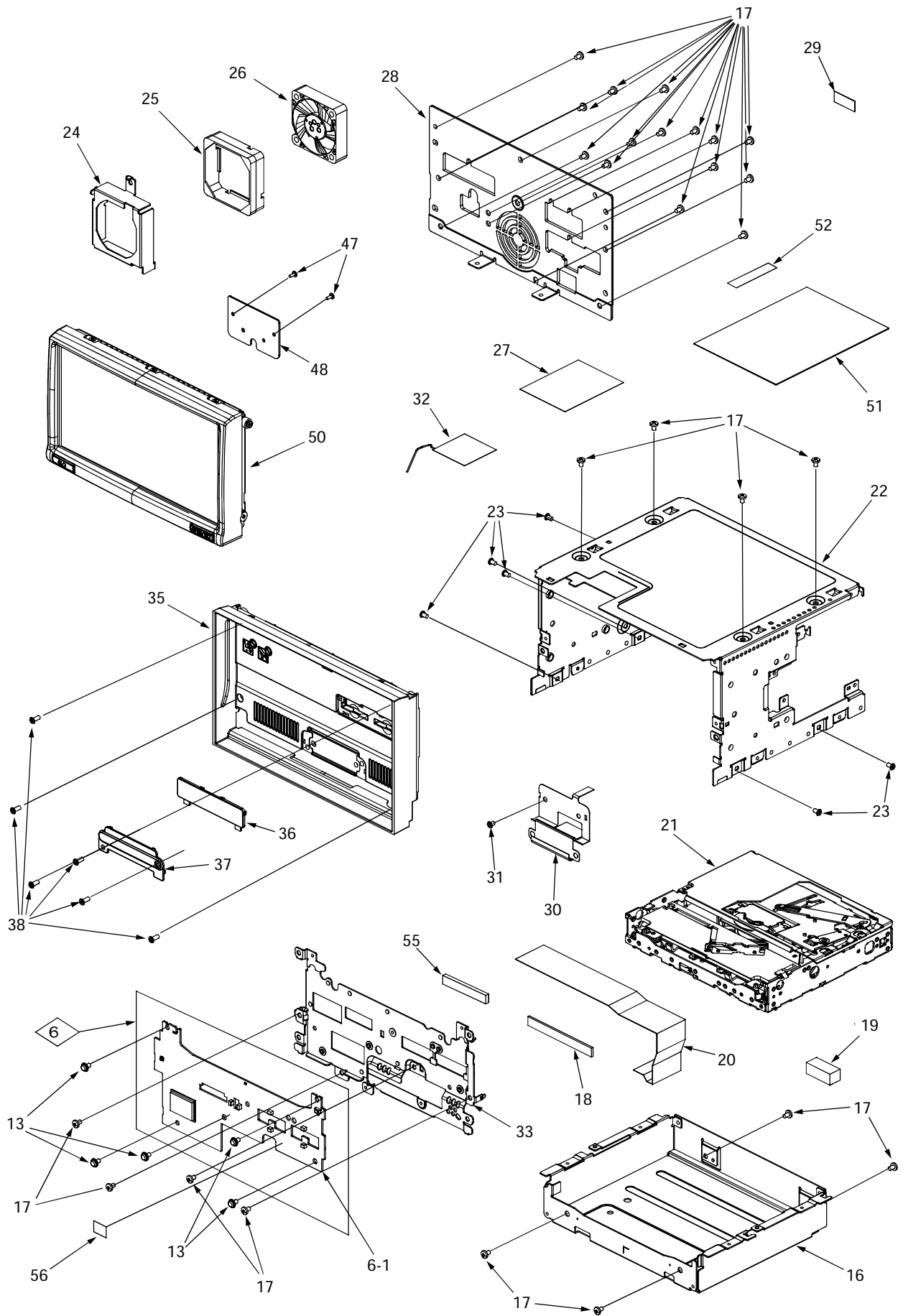


When LCD-A-PWB-ASSY(No.3) or LCD(No.7) is exchanged, it is necessary to adjust the panel unit with a special equipment.

NO.	PART NO.	DESCRIPTION	Q'TY	NO.	PART NO.	DESCRIPTION	Q'TY
1	331-5033-04	REAR-CVR-CAS	1	13	345-6635-00	RUBBER PART	1
2	940-8688-00	ESCUTCHEON-ASSY	1	14	345-6634-00	RUBBER PART	1
3	-----	LCD-A-PWB-ASSY(7210A9-72)	1	15	345-6633-00	RUBBER PART	3
4	816-3118-55	FLAT WIRE	1	16	335-8937-00	ROLLER-R	2
5	345-6659-01	SUPPORT-COVER	1	17	750-7937-00	ROLLER SPRING	2
6	013-9732-00	TOUCH PANEL	1	18	347-8902-00	SPACER	2
7	379-0481-00	INDICATOR	1	19	716-3708-00	SCREW(M2X4)	1
8	331-5319-00	LCD-HOLDER	1	20	-----	SW-A-PWB-ASSY(7210A9-76)	1
9	347-9096-00	PAPER PART	1	21	347-8885-00	SHEET M	1
10	716-1611-50	SPECIAL-SCREW(M2.6x4)	4	22	347-8929-00	SHIELD-SHEET	3
11	716-3694-00	SCREW(M2X4)	4	23	347-8927-00	SHEET M	3
12	716-3693-01	M1.7X6 H5BT SCREW	5	24	347-9022-00	SHIELD SHEET	1

Main section





Please do not reuse a screw with the adhesive

NO.	PART NO.	DESCRIPTION	Q'TY	NO.	PART NO.	DESCRIPTION	Q'TY
1	-----	BASE-PWB-ASSY(7210B7-70)	1	25	NXZ4641	FAN-RUBBER 40	1
1-1	-----	BASE-PWB(396401-039)	1	26	020-3064-00	DC-MOTOR	1
1-2	331-5336-00	IC-HOLDER	1	27	347-8826-02	BT-ANT-TAPE	1
1-3	331-4973-01	TH18CN-BRKT	1	28	307-0781-03	BACK-COVER-NAM	1
1-4	331-5359-00	AUD-CN-BRKT	1	29	347-8863-00	SHIELD-TAPE	1
1-5	331-5061-01	BASE-BRKT	1	30	039-3600-00	FPC	1
1-6	780-2604-50	IT SCREW(M2.6x4)	6	31	716-3504-70	SPECIAL-SCREW(M2.6x4)	1
1-7	714-2606-8B	MACHINE SCREW(M2.6x6)	1	32	060-8113-03	BLUETOOTH ANT	1
1-8	778-3006-00	TAP-SCREW(ϕ 3x6)	2	33	309-1959-00	FRONT PLATE	1
2	-----	IF-PWB-ASSY(7210B7-74)	1	34	714-2608-8B	MACHINE SCREW(M2.6x8)	3
2-1	-----	IF-PWB(397241-039)	1	35	940-8666-02	IN-ESC-ASSY-NE	1
2-2	331-5339-00	SEN-PWB-HOLDER	1	36	335-8853-02	SD-COVER	1
3	-----	CPU-PWB-ASSY(7210B7-71)	1	37	335-8854-02	FPC-COVER	1
3-1	-----	CPU-PWB(397140-039)	1	38	780-6016-00	SPECIAL SCREW(M2.6x6)	6
4	-----	SENSOR-PWB-ASSY (7210B7-74)	1	39	-----	<Missing Ref.No.>	-
4-1	-----	SENSOR-PWB(397241-039)	1	40	313-2122-02	HEAT SINK-EV	1
5	-----	<Missing Ref.No.>	-	41	020-3060-00	DC-MOTOR	1
6	-----	FRONT-A-PWB-ASY (7210B9-77)	1	42	714-2006-8B	MACHINE SCREW(M2x6)	2
6-1	-----	FRONT-PWB(397340-039)	1	43	331-5066-01	FAN-COVER-S	1
7	948-1048-00	IF-PWB-BRKT-ASSY	1	44	-----	XM-SLIDE-ASSY(7210B0-61)	1
8	092-2242-03	ANT-RECEPT	1	44-1	-----	XM-PWB-ASSY(7210B7-73)	1
9	331-2978-00	EARTH PLATE	1	44-2	932-0132-81	SLIDE MECH	1
10	-----	<Missing Ref.No.>	-	44-3	780-2604-50	IT SCREW(M2.6x4)	4
11	-----	<Missing Ref.No.>	-	44-4	345-6475-00	RUBBER PART	1
12	-----	<Missing Ref.No.>	-	45	716-3714-01	SCREW (M2.6 screw with the adhesive)	2
13	780-2604-50	IT SCREW(M2.6x4)	14	46	335-8976-01	SLIDER-WASHER	2
14	816-3049-05	FLAT WIRE	1	47	716-1851-02	SCREW (M2 screw with the adhesive)	2
15	816-3056-06	FLAT WIRE	1	48	331-4990-10	FPC-COVER	1
16	331-5062-02	MECH-BRKT	1	49	-----	SD MEMORY CARD (16GB: 000503-065)	1
17	714-2604-8B	MACHINE SCREW(M2.6x4)	27	50	-----	PANEL-ASSY(3058A4-82)	1
18	347-8896-00	GASKET-A	1	51	276-1021-03	SETPLATE	1
19	345-6452-01	GASKET-D	1	52	276-0779-00	SETPLATE(XM)	1
20	816-3051-55	FLAT WIRE	1	53	-----	<Missing Ref.No.>	-
21	929-5047-80	CD-MECH-MODULE	1	54	345-6680-00	GASKET	1
22	331-5063-01	TOP-CASE	1	55	345-6681-00	GASKET	1
23	780-2604-51	SPECIAL SCREW(M2.6x4)	13	56	-----	LABEL (BT Certification: 061500-290)	1
24	331-4968-01	FAN-BRKT	1				

NO.	PART NO.	DESCRIPTION	Q'TY	NO.	PART NO.	DESCRIPTION	Q'TY
1	966-1722-21	SH-RACK-ASSY	1	42	621-1748-20	POWER GEAR A	1
2	969-0080-31	PICKUP-ASSY	1	43	621-1749-20	POWER GEAR B	1
3	-----	SENSOR-PWB-ASSY(9010AH-95)	1	44	621-1750-20	POWER GEAR C	1
4	-----	MAIN-PWB-ASSY(5047AH-97)	1	45	621-1751-20	POWER GEAR D	1
5	-----	DC-MOTOR(SP 020152730-020)	1	46	621-1752-20	DISC STOPPER	1
6	-----	DC-MOTOR(PW 152803-020)	1	47	621-1753-20	CLAMPER RING	1
7	345-5476-20	CUSHION RUBBER	1	48	621-1754-21	GEAR BASE	1
8	620-1023-23	CLAMPER PLATE	1	49	622-1570-21	DAMPER PIN	3
9	620-1026-21	SPRING PLATE	1	50	622-1571-21	ROLLER SHAFT	1
10	620-1904-20	CLAMPER LINK	1	51	624-3059-00	LEAD SCREW	1
11	620-1907-20	UPPER CHASSIS	1	52	629-0086-20	DAMPER F	2
12	620-1909-20	DRIVE PLATE	1	53	629-0087-20	DAMPER R	1
13	620-1905-20	SENSOR ARM	1	54	714-2003-8B	MACHIN SCREW	2
14	620-1906-20	ID-LOCK PLATE	1	55	716-1507-01	SCREW	3
15	620-1908-20	LOWER CHASSIS	1	56	716-1670-01	SPECIAL SCREW	4
16	-----	MOTOR GEAR(PW 060721-621)	1	57	716-1733-01	SCREW	2
17	621-0608-21	SECOND GEAR	1	58	716-3717-00	SPECIAL SCREW	2
18	621-0609-21	BASE GEAR	1	59	716-3473-01	SPECIAL SCREW	1
19	621-0610-21	IDLE GEAR A	1	60	716-3551-00	SPECIAL SCREW	2
20	621-0611-21	IDLE GEAR B	1	61	750-6797-20	ROLLER SPRING L	1
21	621-0612-22	ROLLER GEAR A	1	62	750-6798-20	ROLLER SPRING R	1
22	621-0620-20	THREAD GEAR A	1	63	750-7865-20	SHIFT SPRING	1
23	621-0621-20	THREAD GEAR B	1	64	750-7866-20	RACK SPRING	1
24	621-0623-24	LS-HOLDER	1	65	750-7867-20	CLAMPER SPRING	1
25	621-0624-22	GUIDE RAIL	1	66	750-7868-20	ID-LOCK SPRING	1
26	-----	TURN TABLE(063820-621)	1	67	750-7869-20	SENSOR SPRING	1
27	621-1844-20	LOADING ROLLER	2	68	750-7870-20	DR-SPRING F	2
28	621-0718-21	ROLLER GUIDE	1	69	750-7871-20	DR-SPRING RA	1
29	621-0719-20	ROLLER GEAR	1	70	750-7872-20	DR-SPRING RB	1
30	621-0720-20	ROLLER GEAR C	1	71	750-7873-20	DR-SPRING C	1
31	621-0721-20	ROLLER GEAR D	1	72	780-2025-00	SCREW	3
32	621-0728-20	STOPPER LINK	1	73	781-1730-00	SCREW	1
33	621-1719-22	IDLE CASE	1	74	803-4906-60	VINYL-COAT-WIRE	1
34	621-1726-21	ROLLER SLEEVE	2	75	816-4065-50	FLAT WIRE	1
35	621-1729-21	SH-BASE	1	76	816-2590-00	SPECIAL LEAD	1
36	621-1742-20	UPPER GUIDE	1	77	816-2591-00	SPECIAL LEAD	1
37	621-1743-20	SHIFT LEVER	1	78	816-2592-00	SPECIAL LEAD	1
38	621-1744-20	RACK	1	79	816-2593-00	SPECIAL LEAD	1
39	621-1745-20	LOCK ARM L	1	80	SMA-182-200	SPINDLE MOTOR ASSY	1
40	621-1746-20	LOCK ARM R	1	81	SMA-183-200	POWER MOTOR ASSY	1
41	621-1747-20	GEAR COVER	1				

ELECTRICAL PARTS LIST

MAIN PWB(B1) section

REF No.	PART No.	DESCRIPTION	REF No.	PART No.	DESCRIPTION	REF No.	PART No.	DESCRIPTION
C1	-----	(N/A)	C60	168-1052-78	16V 1uF K	R16	119-4731-15	1/10W 47k ohm
C2	178-1052-78	25V 1uF	C61	-----	(N/A)	R17	119-0000-05	1/10W 0 ohm JW
C3	042-0627-90	16V 100uF	C62	-----	(N/A)	R18	-----	(N/A)
C4	168-1042-78	16V 0.1uF K	C63	168-1042-78	16V 0.1uF K	R19	119-0000-05	1/10W 0 ohm JW
C5	-----	(N/A)	C64	042-1709-90	6.3V 47uF	R20	119-0000-05	1/10W 0 ohm JW
C6	178-1052-78	25V 1uF	C66	168-1052-78	16V 1uF K	R21	-----	(N/A)
C7	042-0560-85	6.3V 100uF	C68	168-1042-78	16V 0.1uF K	R22	119-2231-15	1/10W 22k ohm
C8	178-1052-78	25V 1uF	C69	042-1710-90	6.3V 100uF	R23	119-0000-05	1/10W 0 ohm JW
C10	168-4732-78	0.047uF K	C72	-----	(N/A)	R24	-----	(N/A)
C11	166-4711-50	470pF CH	C73	-----	(N/A)	R25	119-1041-15	1/10W 100k ohm
C12	168-4732-78	0.047uF K	C74	042-1709-90	6.3V 47uF	R26	119-0000-05	1/10W 0 ohm JW
C13	-----	(N/A)	C75	168-1042-78	16V 0.1uF K	R27	119-4731-15	1/10W 47k ohm
C14	168-1042-78	16V 0.1uF K	C77	168-1042-78	16V 0.1uF K	R28	-----	(N/A)
C15	168-1007-50	10pF CH	C78	168-1022-55	1000pF K	R29	119-5621-15	1/10W 5.6k ohm
C16	166-1007-50	10pF CH	C79	168-1022-55	1000pF K	R30	119-2231-15	1/10W 22k ohm
C17	168-1042-78	16V 0.1uF K	C80	042-0423-20	10V 10uF	R31	119-4731-15	1/10W 47k ohm
C18	168-2222-55	2200pF K	C81	168-1042-78	16V 0.1uF K	R32	119-3341-15	1/10W 330k ohm
C19	168-1052-78	16V 1uF K	C82	-----	(N/A)	R33	119-1041-15	1/10W 100k ohm
C20	168-1052-78	16V 1uF K	C9	166-4711-50	470pF CH	R34	119-1041-15	1/10W 100k ohm
C21	-----	(N/A)	D1	001-1305-90	DAN217U-T106	R35	119-1041-15	1/10W 100k ohm
C22	168-6822-55	6800pF K	D2	-----	(N/A)	R36	119-1011-15	1/10W 100 ohm
C23	-----	(N/A)	IC1	051-6733-60	TC94A73AMFG-201	R37	-----	(N/A)
C24	168-3332-78	0.033uF K	IC2	051-6079-80	BA5830FM-E2	R38	119-1041-15	1/10W 100k ohm
C25	168-3332-78	0.033uF K	IC3	051-3395-90	NJU7780U1-15-TE2	R39	119-0000-05	1/10W 0 ohm JW
C26	043-0570-80	16V 2.2uF K	IC4	051-3396-90	NJM2386ADL3-33-TE1	R41	119-4721-15	1/10W 4.7k ohm
C27	-----	(N/A)	J1	074-2215-65	15P	R42	119-4721-15	1/10W 4.7k ohm
C28	168-1052-78	16V 1uF K	J2	074-2504-10	10P	R44	119-4731-15	1/10W 47k ohm
C29	168-1042-78	16V 0.1uF K	J3	074-2209-88	38P	R45	119-1031-15	1/10W 10k ohm
C30	168-1042-78	16V 0.1uF K	L1	119-0000-05	1/10W 0 ohm JW	R46	-----	(N/A)
C31	168-1052-78	16V 1uF K	L2	119-0000-05	1/10W 0 ohm JW	R47	-----	(N/A)
C32	-----	(N/A)	L3	119-0000-05	1/10W 0 ohm JW	R48	119-1031-15	1/10W 10k ohm
C33	168-1042-78	16V 0.1uF K	L4	010-3104-50	30 ohm/100MHz	R49	119-1031-15	1/10W 10k ohm
C34	168-1042-78	16V 0.1uF K	L5	010-3406-66	22uH J	R50	119-2211-15	1/10W 220 ohm
C35	168-5622-55	5600pF K	Q1	131-1188-50	2SB1188 Q,R	R51	119-1031-15	1/10W 10k ohm
C36	168-1052-78	16V 1uF K	Q2	198-3018-00	2SK3018	R52	119-1031-15	1/10W 10k ohm
C37	168-5622-55	5600pF K	Q3	198-3018-00	2SK3018	R53	119-2211-15	1/10W 220 ohm
C38	166-6801-50	68pF CH	Q4	192-4155-51	2SC4155A S,T	R54	119-3331-15	1/10W 33k ohm
C39	168-1042-78	16V 0.1uF K	Q5	198-3018-00	2SK3018	R55	-----	(N/A)
C40	168-1532-55	0.015uF K	Q6	192-4155-51	2SC4155A S,T	R56	119-3331-15	1/10W 33k ohm
C41	168-1042-78	16V 0.1uF K	Q7	198-3018-00	2SK3018	R57	-----	(N/A)
C42	168-1032-55	0.01uF K	Q8	198-3018-00	2SK3018	R58	119-3331-15	1/10W 33k ohm
C43	168-1042-78	16V 0.1uF K	R1	119-2211-15	1/10W 220 ohm	R59	-----	(N/A)
C44	168-1042-78	16V 0.1uF K	R2	117-1821-15	1/8W 1.8k ohm	R60	119-3331-15	1/10W 33k ohm
C45	-----	(N/A)	R3	117-0000-05	1/8W 0 ohm JW	R61	-----	(N/A)
C46	168-1522-55	1500pF K	R4	119-1001-15	1/10W 10 ohm	R62	119-3331-15	1/10W 33k ohm
C47	168-3322-55	3300pF K	R5	119-2731-15	1/10W 27k ohm	R63	-----	(N/A)
C48	168-1032-55	0.01uF K	R6	119-2731-15	1/10W 27k ohm	R64	119-1051-15	1/10W 1M ohm
C49	168-1042-78	16V 0.1uF K	R7	119-2221-15	1/10W 2.2k ohm	R65	119-4701-15	1/10W 47 ohm
C51	-----	(N/A)	R8	119-2731-15	1/10W 27k ohm	R66	119-1051-15	1/10W 1M ohm
C52	-----	(N/A)	R9	119-2731-15	1/10W 27k ohm	R67	-----	(N/A)
C53	-----	(N/A)	R10	119-1051-15	1/10W 1M ohm	R68	119-1031-15	1/10W 10k ohm
C54	168-1532-55	0.015uF K	R11	119-2211-15	1/10W 220 ohm	TM1	073-0768-90	TERMINAL
C55	168-1052-78	16V 1uF K	R13	119-8231-15	1/10W 82k ohm	X1	061-3534-90	16.92MHz
C56	168-1042-78	16V 0.1uF K	R14	119-1531-15	1/10W 15k ohm	PWB	039-3205-01	PWB(WITHOUT COMPONENTS)
C58	166-6097-50	6pF +/-0.5pF CH	R15	119-8231-15	1/10W 82k ohm			
C59	166-4701-50	47pF CH						

SENSOR PWB(B2) section

REF No.	PART No.	DESCRIPTION	REF No.	PART No.	DESCRIPTION	REF No.	PART No.	DESCRIPTION
D1	001-7138-91	SML-S13RT T86	Q1	060-4025-90	SML-H10TBT86	S2	013-7413-50	SPVG120301
D2	001-7138-91	SML-S13RT T86	Q2	060-4025-90	SML-H10TBT86	PWB	039-3807-00	PWB(WITHOUT COMPONENTS)
J1	074-2504-10	OUTLET SOCKET	S1	013-7414-50	SPVG220100			