

1 2 3 4

A B C D E F

86140-48010 (CVX-2318ZT/US) ID No. P10271
 86140-48040 (CVX-2318ZT/CA) ID No. P10272

86140-48020 (CVX-2318ZT/GG) ID No. P10273
 86140-0E010 (CVX-2618ZTS1/XHUS) ID No. P10285
 86140-0E020 (CVX-2618ZTS1/XHCA) ID No. P10286

This service manual should be used together with the following manual(s):

Model No.	Order No.	Mech.Module	Remarks
CX-3269	CRT4488	S11iPod/USB	CD Mech. Module : Circuit Descriptions, Mech. Descriptions, Disassembly



Supplementary model is identical to the original except for the addition of following items.

Description	-61 model
Cover	CEG1415
Polyethylene Bag	HEG1320
Unit Box	HHG5157
Protector	HHP3166
Protector	HHP3167

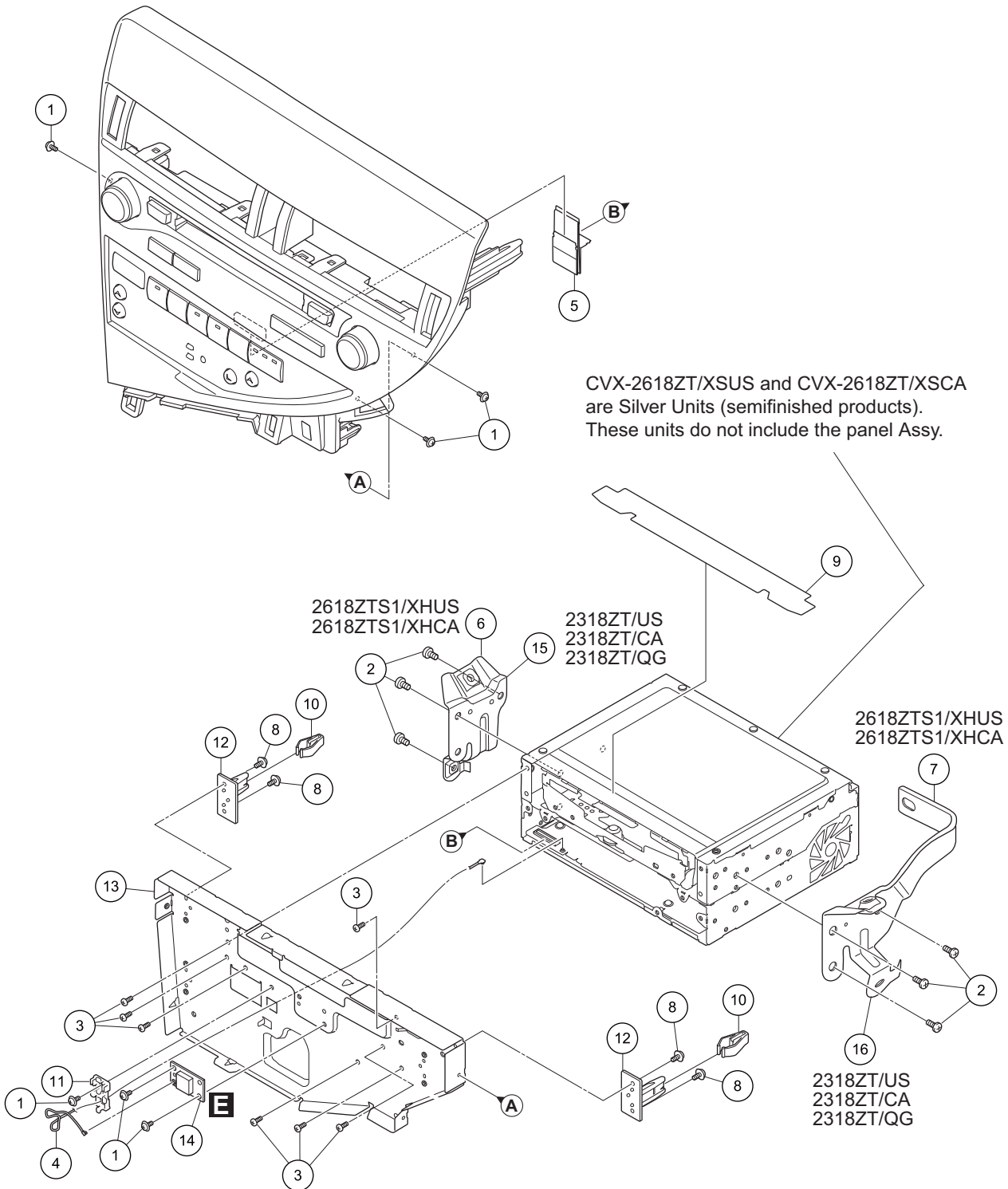
CVX-2618ZTS1/XHUS

2 1 2 3 4

9. EXPLODED VIEWS AND PARTS LIST

- NOTES :
- Parts marked by "*" are generally unavailable because they are not in our Master Spare Parts List.
 - The  mark found on some component parts indicates the importance of the safety factor of the part. Therefore, when replacing, be sure to use parts of identical designation.
 - Screw adjacent to  mark on the product are used for disassembly.
 - For the applying amount of lubricants or glue, follow the instructions in this manual.
(In the case of no amount instructions, apply as you think it appropriate.)

9.1 EXTERIOR (1)



(1) EXTERIOR (1) SECTION PARTS LIST

<u>Mark No.</u>	<u>Description</u>	<u>Part No.</u>	<u>Mark No.</u>	<u>Description</u>	<u>Part No.</u>
1	Screw	ASZ26P050FTC	10	90467-13082	CNV9101
2	Screw	BMZ50P080FTC			
3	Screw	BSZ26P050FTC	11	Holder	CNW1130
4	Cord Assy	CDE9544	12	Guide	CNW1157
5	FFC	CDE9566	13	Frame Unit	CXE4786
			14	Keyboard Unit	See Contrast table (2)
6	86212-0E070	See Contrast table (2)	15	86212-48150	See Contrast table (2)
7	86211-0E070	See Contrast table (2)			
8	Screw	ISS26P060FTC	16	86211-48150	See Contrast table (2)
9	Sheet	CNN3846			

(2) CONTRAST TABLE

CVX-2618ZTS1/XHUS, CVX-2618ZTS1/XHCA, CVX-2318ZT/US, CVX-2318ZT/CA and CVX-2318ZT/QG are constructed the same except for the following:

Mark	No.	Description	CVX-2618ZTS1 /XHUS	CVX-2618ZTS1 /XHCA	CVX-2318ZT /US	CVX-2318ZT /CA	CVX-2318ZT /QG
	6	86212-0E070	CND6432	CND6432	Not used	Not used	Not used
	7	86211-0E070	CND6433	CND6433	Not used	Not used	Not used
	14	Keyboard Unit	CWT1052	CWT1052	CWT1052	CWT1052	CWT1055
		Keyboard Unit	CWT1053	CWT1053	CWT1053	CWT1053	CWT1056
	15	86212-48150	Not used	Not used	CND6230	CND6230	CND6230
	16	86211-48150	Not used	Not used	CND6231	CND6231	CND6231

(1) EXTERIOR (2) SECTION PARTS LIST

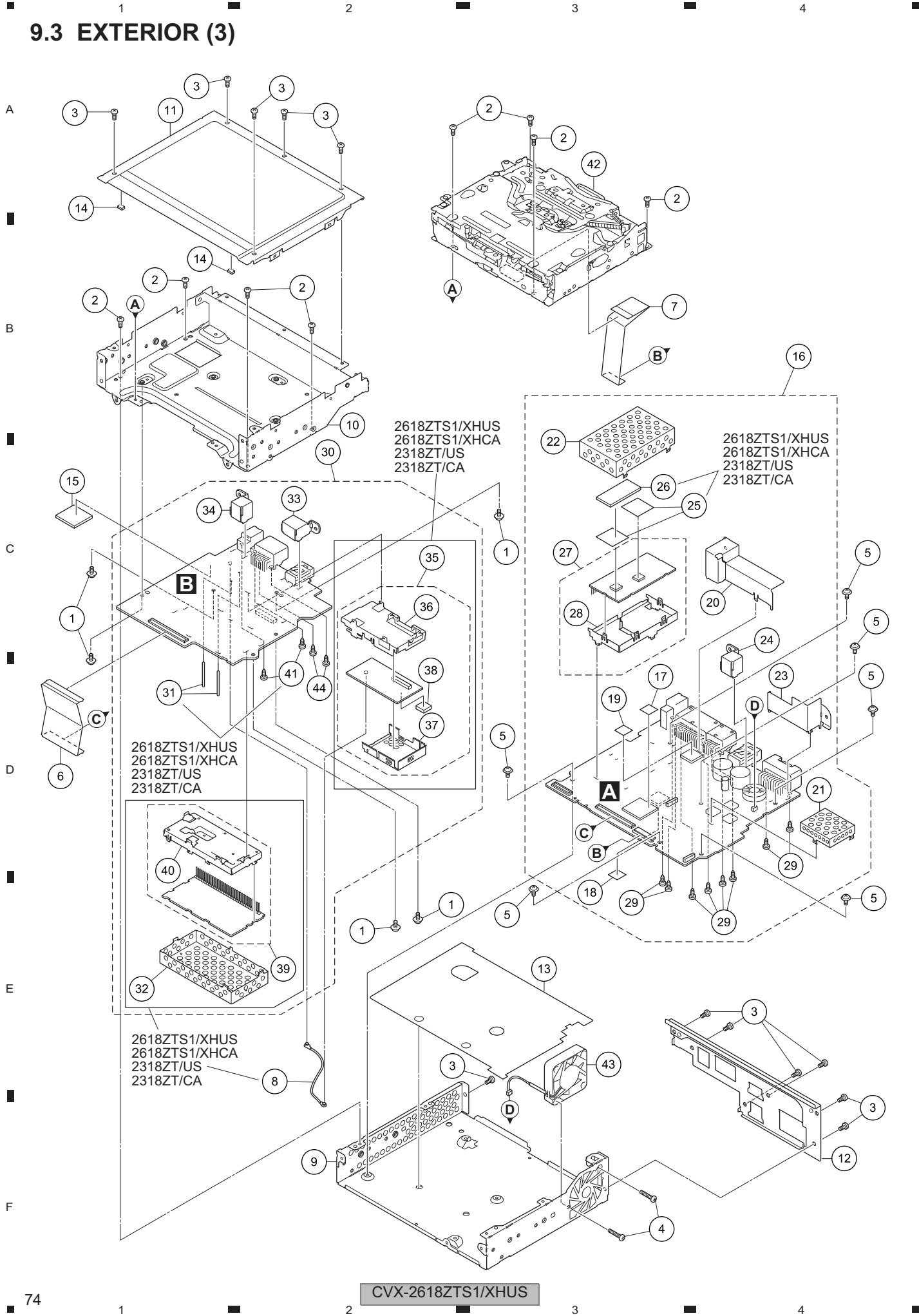
<u>Mark No.</u>	<u>Description</u>	<u>Part No.</u>	<u>Mark No.</u>	<u>Description</u>	<u>Part No.</u>
1	Screw	BPZ20P080FTC	26	Button	See Contrast table (2)
2	Sheet	See Contrast table (2)	* 27	Service Button Unit	See Contrast table (2)
3	Lighting Conductor	CNV9788	28	Button (AUTO)	CXX3678
4	Lighting Conductor	CNV9789	29	Button (OFF)	CXX3679
5	Contact Rubber	CNW2299	30	Button (FRONT)	CXX3680
6	Contact Rubber	CNW2300	31	Button (REAR)	CXX3681
7	Contact Rubber	CNW2301	32	Button (MODE)	CXX3682
8	Lighting Conductor	CNW2355	33	Button (FAN)	CXX3683
9	Lighting Conductor	CNW2357	34	Button (FRESH • RECYCLE)	CXX3684
10	Cam	CNW2359	35	Button (P-TEMP DOWN)	CXX3686
11	Cam	CNW2360	36	Button (D-TEMP DOWN)	CXX3687
12	Holder	CNW2350	37	Button (P-TEMP UP)	CXX3915
13	Holder	CNW2351	38	Button (D-TEMP UP)	CXX3916
14	Holder	CNW2354	39	Service Grille Unit	See Contrast table (2)
15	Keyboard Unit	See Contrast table (2)	40	Cover	CNN3844
16	Sub Label Unit	CEC6828	41	Sheet	CNN3856
17	Button	CAI3730	42	Grille	CNU1784
18	Sheet	CNN3861	43	Plate	CNU1785
19	Knob Unit	See Contrast table (2)	44	Plate	CNU1787
* 20	Spring	CBL1542	45	90467-13082	CNV9101
* 21	Service Button Unit	See Contrast table (2)	46	90467-10201	CNW1293
22	Button (PLAY • PAUSE)	CXX3673	47	Lighting Conductor	CNW2352
23	Button (EJECT)	CXX3674	48	Lighting Conductor	CNW2353
24	Button (RADIO)	CXX3675	49	Holder	CNW2361
25	Button (MEDIA)	CXX3676	50	Holder	CNW2362

(2) CONTRAST TABLE

CVX-2618ZTS1/XHUS, CVX-2618ZTS1/XHCA, CVX-2318ZT/US, CVX-2318ZT/CA and CVX-2318ZT/QG are constructed the same except for the following:

<u>Mark</u>	<u>No.</u>	<u>Description</u>	<u>CVX-2618ZTS1</u> <u>/XHUS</u>	<u>CVX-2618ZTS1</u> <u>/XHCA</u>	<u>CVX-2318ZT</u> <u>/US</u>	<u>CVX-2318ZT</u> <u>/CA</u>	<u>CVX-2318ZT</u> <u>/QG</u>
	2	Sheet	CNN3847	CNN3847	CNN3847	CNN3847	CNN3850
	15	Keyboard Unit	CWT1052	CWT1052	CWT1052	CWT1052	CWT1055
		Keyboard Unit	CWT1053	CWT1053	CWT1053	CWT1053	CWT1056
	19	Knob Unit	CXE4781	CXE4781	CXE4781	CXE4781	CXE4782
*	21	Service Button Unit	CXX3892	CXX3892	CXX3892	CXX3892	CXX3894
	26	Button	CXX3677	CXX3677	CXX3677	CXX3677	CXX3899
			(PRST • TRACK)	(PRST • TRACK)	(PRST • TRACK)	(PRST • TRACK)	(CH • TRACK)
*	27	Service Button Unit	CXX3911	CXX3911	CXX4543	CXX4543	CXX4543
	39	Service Grille Unit	HXX1700	HXX1701	CXX3957	CXX3958	CXX3959

9.3 EXTERIOR (3)



CVX-2618ZTS1/XHUS

(1) EXTERIOR (3) SECTION PARTS LIST

<u>Mark No.</u>	<u>Description</u>	<u>Part No.</u>	<u>Mark No.</u>	<u>Description</u>	<u>Part No.</u>
1	Screw	ASZ26P060FTC	23	Shield	CND6065
2	Screw	BMZ26P050FCC	24	Shield	CND6066
3	Screw	BSZ26P060FTC	25	Sheet	See Contrast table (2)
4	Screw (M2.6 x 10)	CBA1798			
5	Screw (M2.6 x 6)	CBA2258	26	Sheet	See Contrast table (2)
			27	FM/AM Tuner Unit (U2001)	See Contrast table (2)
6	FFC	CDE9148	28	Holder	See Contrast table (2)
7	FFC	CDE9149	29	Screw	PPZ30P060FSN
8	Cord Assy	See Contrast table (2)	30	Sub Unit	See Contrast table (2)
9	Chassis	CNA3166			
10	Chassis	CNA3167	31	Clamper	See Contrast table (2)
			32	Shield	See Contrast table (2)
11	Case	CNB3637	33	Shield	CND6067
12	Case	See Contrast table (2)	34	Shield	CND6068
13	Insulator	CNN3246	35	XM Core TUN Unit	See Contrast table (2)
14	Cushion	CNN3529			
15	Sheet	CNN3790	36	Shield	See Contrast table (2)
			37	Shield	See Contrast table (2)
16	Main Unit	See Contrast table (2)	38	Sheet	See Contrast table (2)
17	Sub Label Unit	See Contrast table (2)	39	WWR Core BE Unit (U8101)	See Contrast table (2)
18	Sub Label Unit	See Contrast table (2)	40	Holder	See Contrast table (2)
19	Sub Label Unit	CEC7417			
20	Shield	CND5536	41	Screw	See Contrast table (2)
			42	CD Mechanism Module (S11COMP-T)	CXK5840
21	Shield	CND5544	43	Fan Motor	CXM1370
22	Shield	CND5545	44	Screw	PPZ30P060FSN

(2) CONTRAST TABLE

CVX-2618ZTS1/XHUS, CVX-2618ZTS1/XHCA, CVX-2318ZT/US, CVX-2318ZT/CA and CVX-2318ZT/QG are constructed the same except for the following:

<u>Mark</u>	<u>No.</u>	<u>Description</u>	<u>CVX-2618ZTS1</u> <u>/XHUS</u>	<u>CVX-2618ZTS1</u> <u>/XHCA</u>	<u>CVX-2318ZT</u> <u>/US</u>	<u>CVX-2318ZT</u> <u>/CA</u>	<u>CVX-2318ZT</u> <u>/QG</u>
	8	Cord Assy	CDE9154	CDE9154	CDE9154	CDE9154	Not used
	12	Case	CNB3746	CNB3746	CNB3746	CNB3746	CNB3765
	16	Main Unit	CWN5811	CWN5811	CWN5811	CWN5811	CWN6028
	17	Sub Label Unit	CEC7415	CEC7415	CEC7415	CEC7415	CEC7418
	18	Sub Label Unit	CEC7416	CEC7416	CEC7416	CEC7416	CEC7419
	25	Sheet	CNN3791	CNN3791	CNN3791	CNN3791	Not used
	26	Sheet	CNN3858	CNN3858	CNN3858	CNN3858	Not used
	27	FM/AM Tuner Unit (U2001)	CWE2266	CWE2266	CWE2266	CWE2266	CWE2262
	28	Holder	CND5078	CND5078	CND5078	CND5078	CND5419
	30	Sub Unit	CWN5812	CWN6027	CWN5812	CWN6027	CWN6029
	31	Clamper	CEF1038	CEF1038	CEF1038	CEF1038	Not used
	32	Shield	CND5842	CND5842	CND5842	CND5842	Not used
	35	XM Core TUN Unit	CWE2231	CWE2232	CWE2231	CWE2232	Not used
	36	Shield	CND5894	CND5894	CND5894	CND5894	Not used
	37	Shield	CND5969	CND5969	CND5969	CND5969	Not used
	38	Sheet	CNN2264	CNN2264	CNN2264	CNN2264	Not used
	39	WWR Core BE Unit (U8101)	CWE2340	CWE2340	CWE2340	CWE2340	Not used
	40	Holder	CND5427	CND5427	CND5427	CND5427	Not used
	41	Screw	PPZ30P060FSN	PPZ30P060FSN	PPZ30P060FSN	PPZ30P060FSN	Not used

9.4 CD MECHANISM MODULE

A

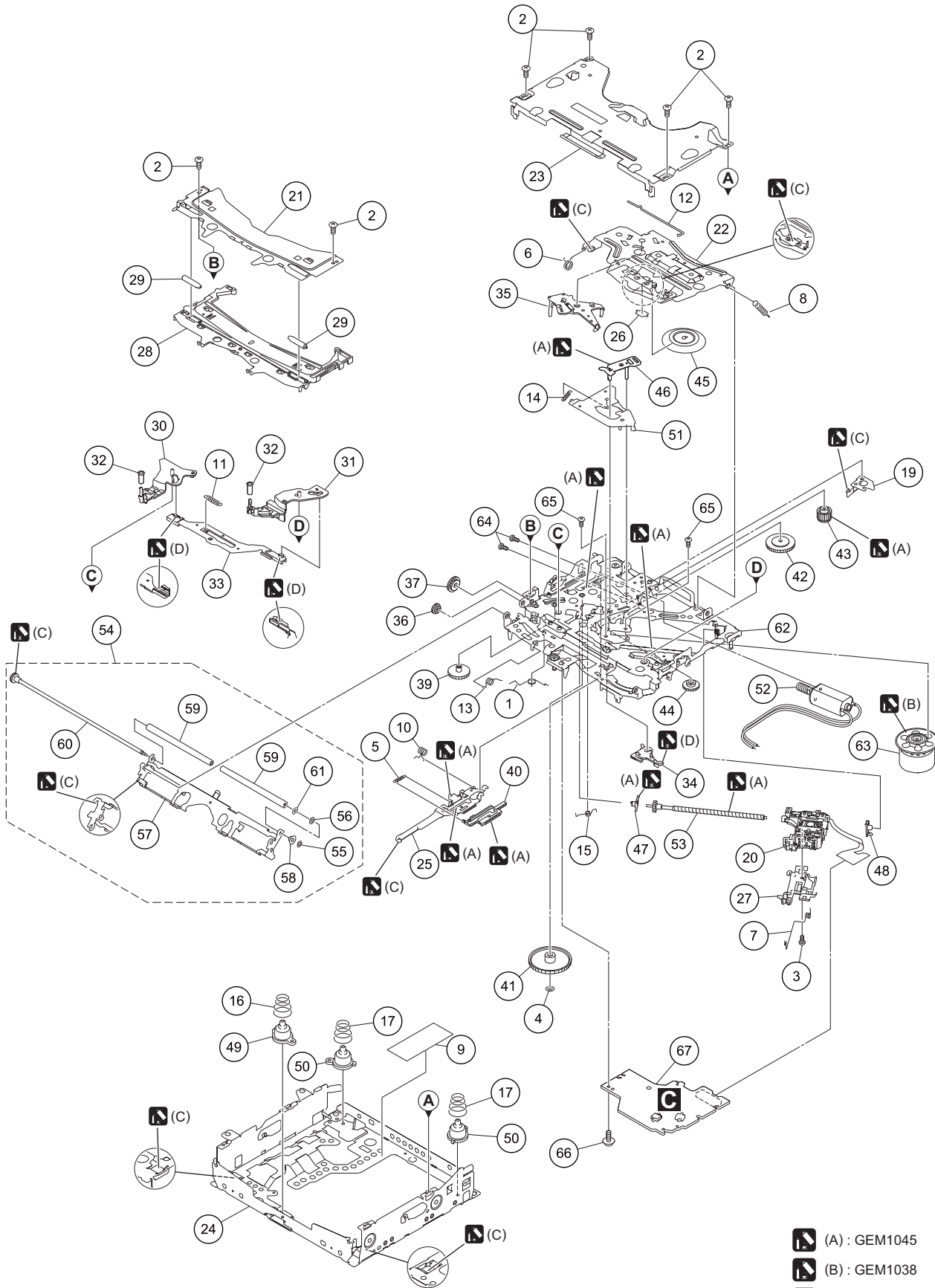
B





C

D

E

F



-  (A) : GEM1045
-  (B) : GEM1038
-  (C) : GEM1024
-  (D) : GEM1043

CD MECHANISM MODULE SECTION PARTS LIST

<u>Mark No.</u>	<u>Description</u>	<u>Part No.</u>	<u>Mark No.</u>	<u>Description</u>	<u>Part No.</u>
1	Spring	CBH3090	50	Damper	CNW1198
2	Screw	BSZ20P040FTC			
3	Screw(M2 x 4)	CBA1835	51	Arm	CNW1726
4	Washer	CBF1038	52	Motor Unit(M2)(LOAD/CRG)	CXC4026
5	Spring	CBH3010	53	Screw Unit	CXC8894
			54	Arm Assy	CXC8896
6	Spring	CBH2855	55	Washer	CBF1037
7	Spring	CBH2856			
8	Spring	CBH2860	56	Washer	CBF1038
9	Sheet	CNN3693	57	Arm	CND4554
10	Spring	CBH3011	58	Collar	CNV6906
			59	Roller	CNW1196
11	Spring	CBH3012	60	Gear Unit	CXC8893
12	Spring	CBH3014			
13	Spring	CBH3015	61	Washer	YE15FTC
14	Spring	CBH3016	62	Chassis Unit	CXE3818
15	Spring	CBH3017	63	Motor Unit(M1)(SPDL)	CXE3767
			64	Screw	JFZ20P025FTC
16	Spring	CBH3086	65	Screw	JGZ17P022FTC
17	Spring	CBH3019			
18		66	Screw	EBA1028
19	Spring	CBL1822	67	CD Core Unit (S11COMP-T)	CWX3936
20	Pickup Unit(P10.5)(Service)	CXX1942			
21	Bracket	CND4553			
22	Arm	CND4555			
23	Frame	CND4557			
24	Frame	CND5880			
25	Lever	CND5398			
26	Sheet	CNN2280			
27	Rack	CNV8342			
28	Guide	CNW2141			
29	Roller	CNW1172			
30	Arm	CNW2042			
31	Arm	CNW1174			
32	Roller	CNW1175			
33	Lever	CNW1176			
34	Arm	CNW1177			
35	Arm	CNW1178			
36	Gear	CNW1180			
37	Gear	CNW1181			
38				
39	Gear	CNW1183			
40	Rack	CNW1184			
41	Gear	CNW1185			
42	Gear	CNW1186			
43	Gear	CNW1187			
44	Gear	CNW1188			
45	Clamper	CNW1190			
46	Arm	CNW1192			
47	Holder	CNW1193			
48	Holder	CNW1194			
49	Damper	CNW1197			

12. ELECTRICAL PARTS LIST

NOTE:

- Parts whose parts numbers are omitted are subject to being not supplied.
- The part numbers shown below indicate chip components.

Chip Resistor

RS1/OS○○○○J,RS1/○○S○○○○J

Chip Capacitor (except for CQS.....)

CKS....., CCS....., CSZS.....

- The \triangle mark found on some component parts indicates the importance of the safety factor of the part. Therefore, when replacing, be sure to use parts of identical designation.
- Meaning of the figures and others in the parentheses in the parts list.

Example) IC 301 is on the point (face A, 91 of x-axis, and 111 of y-axis) of the corresponding PC board.

IC 301 (A, 91, 111) IC NJM2068V

- The expression of the unit in this manual is shown by μ instead of μ . Please do not make a mistake.

<u>Circuit Symbol and No.</u>	<u>Part No.</u>	<u>Circuit Symbol and No.</u>	<u>Part No.</u>
Unit Number : CWN5811(US,CA)		IC 1904 (B,63,102) IC	BD37A41FVM
Unit Number : CWN6028(QG)		IC 2301 (B,39,51) IC(QG)	NJM2740V
Unit Name : Main Unit		IC 2321 (A,85,112) IC	NJM2740V
Unit Number : CWN5812(US)		IC 2351 (A,75,112) IC	NJM2740V
Unit Number : CWN6027(CA)		IC 2381 (B,107,31) IC	NJM2740V
Unit Number : CWN6029(QG)		IC 2391 (B,100,58) IC(US,CA)	NJM2740V
Unit Name : Sub Unit		IC 2401 (B,100,44) IC	NJM2740V
Unit Number : CWX3936		IC 2411 (B,66,43) IC	NJM2740V
Unit Name : CD Core Unit(S11Comp-T)		IC 2421 (B,77,90) IC	NJM8801E
Unit Number : CWT1052(US,CA)		IC 2422 (B,77,96) IC	NJM8801E
Unit Number : CWT1053(US,CA)		IC 2501 (B,105,57) IC(US,CA)	XC25BS8033MR-G
Unit Number : CWT1055(QG)		IC 2502 (A,102,55) IC(US,CA)	AK4388VT
Unit Number : CWT1056(QG)		IC 2521 (B,105,44) IC	XC25BS8033MR-G
Unit Name : Keyboard Unit		IC 2522 (A,102,45) IC	AK4388VT
		IC 2541 (B,61,34) IC	AK4388VT
		IC 2542 (B,48,32) IC	XC25BS8033MR-G
		IC 2701 (A,72,95) IC	PM9012A
		IC 2702 (B,65,75) IC(US,CA)	NJM4580V
		IC 2801 (B,28,90) IC(QG)	TC74VHC02FK
		IC 3011 (A,99,106) IC	R3119N085E
		IC 3101 (A,94,89) IC	S-812C56AUA-C3K
		IC 3102 (A,94,81) IC	S-1206B33-U3
		IC 3103 (A,96,75) IC	S-80930CNMC-G80
		IC 3201 (B,142,76) IC	BD9018KV
		IC 3251 (A,107,85) Regulator IC	BD9781HFP
Unit Number : CWN5811(US,CA)		IC 3301 (A,115,68) Regulator IC	NJM2846DL3-05
Unit Number : CWN6028(QG)		IC 3302 (A,63,74) Regulator IC	NJM2872BF25
Unit Name : Main Unit		IC 3303 (A,79,77) IC	NJM4580V
		IC 3321 (A,62,61) IC	BD35632EFJ
		IC 3341 (A,113,60) Regulator IC	S-1155B18-U5
		IC 3342 (A,154,57) Regulator IC	S-1172B33-E6
		IC 3361 (B,165,65) Regulator IC	S-1172B12-E6
		IC 3441 (B,109,20) IC	BD00D0AWHFP
		IC 3461 (B,63,20) Regulator IC	S-1172B15-E6
		IC 3481 (B,27,16) Regulator IC	S-1172B34-E6
		IC 3501 (A,75,63) LDO Regulator	NJM2831F05
		IC 3552 (B,109,92) IC	NJM2903V
		IC 3553 (B,105,97) IC	LT6106HS5
		IC 4001 (A,143,37) IC	UPD35502
		IC 4301 (B,151,11) IC	IS45S16160C-7TLA1
MISCELLANEOUS			
IC 1001 (A,79,37) IC(US,CA)	PEG775A8		
(A,79,37) IC(QG)	PEG777A8		
IC 1201 (B,81,56) IC(US,CA)	PEG780A8		
(B,81,56) IC(QG)	PEG781A8		
IC 1501 (B,77,116) IC	HA12241FP	IC 3501 (A,75,63) LDO Regulator	NJM2831F05
IC 1601 (B,77,33) IC	BR24T16FVM-W	IC 3552 (B,109,92) IC	NJM2903V
IC 1901 (B,54,108) IC	TC74LCX07FK	IC 3553 (B,105,97) IC	LT6106HS5
		IC 4001 (A,143,37) IC	UPD35502
IC 1902 (A,59,119) IC	R5F35MCEJFF	IC 4301 (B,151,11) IC	IS45S16160C-7TLA1
IC 1903 (B,47,116) IC	R2A25416SP		

1

2

3

4

Circuit Symbol and No.Part No.Circuit Symbol and No.Part No.

IC 4401 (B,165,48) Flash ROM Unit CWW5022
 IC 4501 (B,122,51) IC S2R72V27
 IC 4601 (A,88,126) IC BD82001FVJ
 IC 4701 (A,167,52) IC 341S2313
 IC 4801 (A,107,32) IC AK4633VN

Q 3106 (A,93,96) Transistor 2SC4081
 Q 3107 (B,92,83) Transistor RN4987
 Q 3108 (B,88,81) Digital Transistor DTC144EUA
 Q 3109 (A,94,106) Chip Transistor RN1904
 Q 3110 (A,90,101) Chip Transistor DTA114EUA
 Q 3171 (B,92,73) Transistor 2SA1576A

IC 4802 (A,115,32) IC TC74VHC157FK
 IC 4851 (B,58,76) IC NJM2740V
 Q 1301 (A,59,45) Chip Transistor DTA114EUA
 Q 1302 (A,59,42) Transistor 2SC4081
 Q 1321 (A,89,22) Transistor 2SA1576A

Q 3172 (B,98,80) Transistor 2SA1576A
 Q 3173 (B,92,76) Chip Transistor RN1903
 Q 3201 (A,156,79) FET SP8K10S
 Q 3202 (A,130,79) FET SP8K10S
 Q 3381 (B,142,97) Chip Transistor HN1A01FU

Q 1331 (A,59,77) Transistor 2SA1576A
 Q 1341 (B,78,39) Transistor 2SC4081
 Q 1352 (B,79,7) Transistor 2SC4081
 Q 1361 (B,36,32) Transistor 2SC4081
 Q 1362 (B,43,19) Chip Transistor DTA114YUA

Q 3382 (B,142,94) Transistor KTC801U
 Q 3383 (B,149,101) Transistor 2SC4081
 Q 3384 (B,154,101) Transistor 2SB1260
 Q 3401 (B,47,102) Chip Transistor HN1A01FU
 Q 3402 (B,41,100) Transistor 2SB1260

Q 1363 (B,30,21) Transistor RN4987
 Q 1364 (B,39,27) Transistor 2SC4081
 Q 1365 (B,54,25) Transistor 2SC4081
 Q 1366 (B,44,22) Transistor 2SC4081
 Q 1368 (B,45,25) Transistor RN4987

Q 3403 (B,47,96) Chip Transistor DTC114TUA
 Q 3551 (B,111,97) Transistor 2SC4081
 Q 4701 (A,168,58) Transistor 2SA1576A
 Q 4702 (A,171,59) Chip Transistor DTC114EUA
 D 1001 (A,75,18) Diode RB520G-30

Q 1369 (B,54,23) Transistor 2SC4081
 Q 1701 (B,80,21) Chip Transistor DTC114YUA
 Q 1901 (B,60,120) Transistor 2SC4081
 Q 1903 (A,67,112) Transistor KRX202U
 Q 1904 (B,66,111) Chip Transistor DTC114EUA

D 1311 (B,95,63) Diode 1SS352
 D 1351 (B,87,9) Diode KDS121
 D 1361 (B,47,20) Diode 1SS352
 D 1362 (B,37,22) Diode RKZ5.6KG(B2)
 D 1363 (B,37,24) Diode RKZ4.3KG(B2)

Q 1905 (B,64,119) Transistor 2SA1576A
 Q 1906 (B,63,110) Chip Transistor DTC114EUA
 Q 1907 (A,41,113) Chip Transistor DTC114EUA
 Q 2001 (B,29,51) Transistor DTA143TUA
 Q 2002 (B,29,48) Transistor DTA143TUA

D 1364 (B,33,23) Diode 1SS352
 D 1365 (B,47,25) Diode 1SS352
 D 1401 (A,145,97) Diode ST70-27F
 D 1431 (B,49,123) Diode 1SS352
 D 1432 (B,34,145) Diode 1SS352

Q 2101 (A,29,123) Transistor 2SC4081
 Q 2421 (A,69,83) Transistor UMT1N
 Q 2422 (B,71,104) Transistor UMH3N
 Q 2423 (B,84,104) Transistor UMH3N
 Q 2424 (A,74,83) Transistor UMT1N

D 1433 (B,37,145) Diode 1SS352
 D 1434 (B,41,145) Diode 1SS352
 D 1436 (B,51,122) Diode RSB18V
 D 1481 (B,121,107) Diode RSB18V
 D 1483 (B,124,103) Diode RSB18V

Q 2425 (B,75,104) Transistor UMH3N
 Q 2426 (B,80,104) Transistor UMH3N
 Q 2427 (B,74,85) Transistor UMX1N
 Q 2428 (B,75,100) Transistor UMH3N
 Q 2429 (B,80,100) Transistor UMH3N
 Q 2801 (B,44,92) Transistor(QG) 2SA1576A
 Q 2802 (B,38,93) Transistor(QG) KRC860U

D 1484 (B,124,99) Diode RSB18V
 D 1485 (B,114,99) Diode RSB18V
 D 1486 (B,116,96) Diode RSB18V
 D 1487 (B,119,99) Diode RSB18V
 D 1488 (B,46,144) Diode RSB18V

Q 3021 (B,99,76) Transistor RN4987
 Q 3022 (B,102,72) Transistor 2SC4081
 Q 3023 (B,99,73) Transistor RN4987
 Q 3024 (B,105,63) Transistor 2SC4081
 Q 3025 (B,98,66) Chip Transistor DTA114YUA

D 1489 (B,134,98) Diode RR264M-400
 D 1501 (B,77,121) Diode RKZ18KG(B2)
 D 1502 (B,80,120) Diode RKZ18KG(B2)
 D 1701 (B,85,22) Diode KDS121
 D 1903 (B,68,119) Diode 1SS352

Q 3031 (B,77,25) Transistor KTC801U
 Q 3032 (B,81,24) Digital Transistor DTA143EUA
 Q 3041 (B,136,112) Transistor 2SC4081
 Q 3042 (B,139,113) Transistor RN4987
 Q 3043 (B,140,108) Transistor RN4987

D 1905 (A,44,124) Diode RSB18V
 D 1906 (A,48,124) Diode RSB18V
 D 2421 (B,88,86) Diode 1SS352
 D 2422 (B,85,85) Diode(US,CA) 1SS352
 D 2801 (B,32,101) Diode(QG) CPH5512
 D 2802 (B,32,96) Diode(QG) CPH5512
 D 3021 (B,104,74) Diode HZU8R2(B1)

Q 3044 (B,135,109) Chip Transistor RN2902
 Q 3045 (B,133,114) Transistor RN4987
 Q 3071 (B,72,21) Transistor 2SC4081
 Q 3072 (B,69,24) Transistor 2SA1576A
 Q 3101 (B,96,103) Chip Transistor DTA114EUA

D 3031 (B,73,27) Diode HZU9R1(B1)
 D 3041 (B,138,120) Diode RKZ6.2KG(B2)
 D 3042 (B,135,122) Diode 1SS352
 D 3043 (B,136,120) Diode 1SS352
 D 3044 (B,135,119) Diode RKZ16KG(B2)

Q 3102 (B,94,95) Transistor 2SB1184F5
 Q 3103 (B,94,108) Transistor 2SC4081
 Q 3104 (B,97,109) Transistor 2SA1576A
 Q 3105 (B,98,107) Transistor 2SC4081

D 3101 (A,90,88) Diode 1SS352
 D 3103 (A,120,107) Diode RR264M-400

1

2

3

4

5		6		7		8	
<u>Circuit Symbol and No.</u>		<u>Part No.</u>		<u>Circuit Symbol and No.</u>		<u>Part No.</u>	
D 3104	(A,96,93) Diode	RKZ16KG(B2)		L 3201	(A,140,84) Inductor	CTH1476	
D 3106	(B,93,80) Diode	1SS352		L 3202	(A,153,70) Choke Coil 7.0 uH	CTH1381	
D 3107	(B,89,78) Diode	KDS121					
D 3108	(A,92,107) Diode	1SS352		L 3203	(A,130,69) Inductor	DTH1205	A
D 3201	(A,127,101) Diode	M2FM3		L 3230	(A,147,68) Chip Ferrite Bead	BTX1046	
D 3202	(B,157,77) Diode	KDR720E		L 3231	(A,137,68) Chip Ferrite Bead	BTX1046	
D 3203	(B,130,77) Diode	KDR720E		L 3251	(A,120,101) Choke Coil 2.2 uH	CTH1380	
D 3251	(A,115,86) Diode	RB050L-40		L 3252	(A,110,95) Inductor	CTH1255	
D 3303	(A,76,75) Diode	UDZS4R7(B)		L 3401	(B,36,104) Inductor	CTF1629	
D 3361	(B,150,57) Diode	1SR154-400		L 4001	(B,138,25) Chip Ferrite Bead	ATF1211	
D 3362	(B,153,57) Diode	1SR154-400		L 4002	(B,152,30) Inductor	CTF1547	
D 3381	(B,146,98) Diode	KDS121		L 4010	(B,155,46) Inductor	CTF1547	
D 3382	(B,152,104) Diode	1SS352		L 4011	(B,127,34) Chip Ferrite Bead	ATF1211	
D 3383	(B,150,107) Diode	UDZS8R2(B)		L 4012	(B,128,32) Chip Ferrite Bead	ATF1211	
D 3401	(B,48,104) Diode	1SS352		L 4301	(B,154,20) Inductor	XTL3010	B
D 3402	(B,37,100) Diode	RR264M-400		L 4401	(A,164,62) Ferrite Bead	CTF1528	
D 3403	(B,38,106) Diode	RR264M-400		L 4501	(A,110,57) Ferrite Bead	CTF1528	
D 3461	(B,56,15) Diode	1SR154-400		L 4502	(B,114,61) Ferrite Bead	CTF1528	
D 3501	(A,76,66) Diode	RR264M-400		L 4503	(B,114,38) Ferrite Bead	CTF1528	
D 3502	(A,73,63) Diode	KDR720E		L 4601	(A,88,140) Chip Ferrite Bead	BTX1046	
D 4851	(B,43,117) Diode	RSB18V		L 4651	(B,87,117) Choke Coil 90 ohm	VTH1043	
L 1001	(A,96,28) Chip Beads	VTL1129		L 4652	(A,109,131) Chip Ferrite Bead	BTX1046	
L 1002	(B,88,21) Chip Beads	VTL1129		L 4701	(A,164,58) Ferrite Bead	CTF1528	
L 1201	(B,76,66) Ferrite Bead	CTF1528		L 4801	(A,101,34) Ferrite Bead	CTF1528	
L 1202	(B,72,40) Ferrite Bead	CTF1528		L 4802	(A,110,37) Ferrite Bead	CTF1528	
L 1203	(B,73,43) Ferrite Bead	CTF1528		L 4803	(A,110,38) Ferrite Bead	CTF1528	C
L 1234	(B,70,61) Inductor	CTF1786		TH3381	(A,126,96) Thermistor	CCX1074	
L 1235	(B,71,59) Inductor	CTF1786		X 1001	(A,80,21) Resonator 16 MHz	CSS1810	
L 1501	(B,82,112) Ferrite Bead	CTF1528		X 1901	(A,64,106) Resonator 8 MHz	CSS1815	
L 1601	(B,73,35) Ferrite Bead	CTF1528		X 4001	(A,125,36) Resonator 12 MHz	YSS5005	
L 1901	(B,77,111) Inductor	XTL3010		F 1901	(A,46,118) Filter	CTF1684	
L 2001	(A,9,39) Inductor	CTF1607		⚠ P1001	(A,10,10) Fuse 3.15 A	CEK1259	
L 2002	(A,37,114) Chip Coil	LCTAW1R0J2520		⚠ P1461	(B,83,140) Fuse 8 A	CEK1263	
L 2003	(A,20,27) Inductor(US,CA)	CTF1607		P 2101	(B,20,117) Surge Protector	IMSA-6802-01Y900	
L 2004	(A,22,22) Inductor	CTF1617		P 2102	(B,12,116) Surge Protector	IMSA-6802-01Y900	
L 2005	(A,25,22) Inductor	XTL3010		VA4651	(B,88,120) Varistor	EZJZ1V800AM	
L 2006	(B,23,56) Inductor(US,CA)	CTF1786		VA4652	(B,86,120) Varistor	EZJZ1V800AM	D
L 2007	(B,23,55) Inductor(US,CA)	CTF1786		U 2001	(A,33,74) FM/AM Tuner Unit(US,CA)	CWE2266	
L 2008	(B,22,52) Inductor(US,CA)	CTF1786			(A,33,74) FM/AM Tuner Unit(QG)	CWE2262	
L 2009	(B,22,50) Inductor(US,CA)	CTF1786		U 2601	(A,42,25) BT Module	CWW4746	
L 2102	(B,19,115) Chip Coil	LCTAW330J2520		CN1002	(A,41,143) Plug	CKM1514	
L 2201	(A,105,20) Chip Ferrite Bead	VTL1183		CN1005	(A,75,12) Connector	CKS6242	
L 2202	(B,108,12) Ferrite Bead	CTF1528		CN1006	(A,24,8) Connector	CKS6465	
L 2501	(B,109,61) Inductor(US,CA)	CTF1547		CN1007	(A,156,101) Connector	VKN1928	
L 2502	(A,99,62) Inductor(US,CA)	CTF1547		CN2001	(A,113,12) Connector	CKS5854	
L 2521	(B,107,48) Inductor	CTF1547		CN2002	(A,44,10) Connector	CKS5749	
L 2522	(A,102,41) Inductor	CTF1547		JA1001	(A,144,147) Connector	CKM1469	
L 2541	(B,65,27) Inductor	CTF1547		JA1003	(A,69,146) Connector	CKM1466	E
L 2542	(B,44,31) Inductor	CTF1547		JA2101	(A,16,139) Connector	CKS5700	
L 2607	(B,35,17) Chip Ferrite Bead	ATF1211		JA4003	(A,99,143) Plug	CKM1604	
L 2608	(B,41,13) Chip Ferrite Bead	ATF1211		VL2101	(A,10,115) Coil	CTB1115	
L 2801	(B,40,93) Inductor(QG)	LCTC6R8K1608		RESISTORS			
L 2802	(B,29,101) Inductor(QG)	LCTC6R8K1608		R 1001	(A,64,33)	RS1/16SS122J	
L 2803	(B,34,101) Inductor(QG)	LCTC6R8K1608		R 1002	(B,70,27)	RS1/10SR1502D	
L 2804	(B,25,91) Ferrite Bead(QG)	CTF1528		R 1003	(A,63,25)	RS1/16SS122J	
L 3001	(A,136,114) Choke Coil 600 uH	CTH1520		R 1004	(A,65,25)	RS1/16SS122J	
L 3101	(A,95,98) Inductor	XTL3010		R 1005	(A,64,49) (US,CA)	RS1/16SS473J	F
L 3102	(A,99,77) Inductor	XTL3010		R 1007	(A,64,34)	RS1/16SS473J	
L 3171	(B,99,110) Inductor	CTF1786		R 1008	(B,69,33)	RS1/16SS102J	
L 3172	(B,92,70) Chip Beads	VTL1129					

1

2

3

4

Circuit Symbol and No.**Part No.****Circuit Symbol and No.****Part No.**

R	1009	(B,69,29)	RS1/10SR3301D	R	1074	(A,85,21)	RS1/16SS102J	
R	1010	(B,69,31)	RS1/10SR3301D	R	1075	(A,81,51)	RS1/16SS473J	
R	1011	(A,65,40)	RS1/16SS0R0J	R	1076	(A,82,50)	RS1/16SS0R0J	
A	R	1012	(A,65,39) (US,CA)	RS1/16SS0R0J	R	1077	(A,85,19)	RS1/16SS102J
	R	1013	(A,64,37)	RS1/16SS0R0J	R	1078	(A,80,54)	RS1/16SS0R0J
	R	1014	(A,66,37)	RS1/16SS102J	R	1079	(A,84,17)	RS1/16SS102J
	R	1015	(A,64,36)	RS1/16SS101J	R	1080	(A,79,56)	RS1/16SS473J
	R	1016	(B,73,32)	RS1/16SS100J	R	1081	(A,81,53)	RS1/16SS101J
	R	1017	(B,73,31)	RS1/16SS100J	R	1082	(A,80,56)	RS1/16SS473J
	R	1018	(B,73,34)	RS1/16SS102J	R	1083	(A,83,52)	RS1/16SS0R0J
	R	1020	(A,64,32)	RS1/16SS102J	R	1084	(A,84,50)	RS1/16SS101J
	R	1021	(A,63,26)	RS1/16SS102J	R	1085	(A,87,19)	RS1/16SS101J
	R	1022	(A,65,26)	RS1/16SS102J	R	1086	(A,83,56)	RS1/16SS101J
B	R	1024	(A,65,46) (US,CA)	RS1/16SS0R0J	R	1087	(A,84,55)	RS1/10SR0R0J
	R	1025	(A,63,47)	RS1/16SS0R0J	R	1088	(A,82,56)	RS1/16SS473J
	R	1026	(A,66,44) (US,CA)	RS1/16SS0R0J	R	1089	(A,86,24)	RS1/16SS101J
	R	1027	(A,65,43)	RS1/16SS0R0J	R	1090	(A,87,50)	RS1/16SS473J
	R	1028	(A,63,45)	RS1/16SS0R0J	R	1091	(A,88,52)	RS1/16SS101J
	R	1029	(A,62,43)	RS1/16SS0R0J	R	1092	(A,87,52)	RS1/16SS473J
	R	1030	(A,76,24)	RS1/16SS472J	R	1093	(B,87,26)	RS1/16SS0R0J
	R	1031	(A,69,16)	RS1/16SS472J	R	1095	(B,87,25)	RS1/16SS0R0J
	R	1032	(A,69,17)	RS1/16SS472J	R	1096	(B,86,29)	RS1/16SS101J
	R	1033	(A,69,18)	RS1/16SS472J	R	1097	(A,91,28)	RS1/16SS101J
	R	1034	(A,69,19)	RS1/16SS472J	R	1098	(A,91,48)	RS1/16SS473J
C	R	1035	(A,64,35)	RS1/16SS0R0J	R	1099	(A,92,28)	RS1/16SS472J
	R	1036	(A,76,21)	RS1/16SS103J	R	1100	(B,86,31)	RS1/16SS473J
	R	1037	(A,66,49)	RS1/16SS473J	R	1101	(B,92,26)	RS1/16SS102J
	R	1039	(A,66,48)	RS1/16SS102J	R	1102	(A,92,41)	RS1/16SS0R0J
	R	1040	(A,70,24)	RS1/16SS0R0J	R	1104	(B,90,36)	RS1/16SS102J
	R	1041	(A,67,49)	RS1/16SS102J	R	1105	(B,86,35)	RS1/16SS101J
	R	1042	(A,69,22)	RS1/16SS0R0J	R	1106	(A,91,35)	RS1/16SS0R0J
	R	1043	(B,73,30)	RS1/16SS0R0J	R	1107	(A,93,35)	RS1/16SS101J
	R	1044	(A,67,51)	RS1/16SS0R0J	R	1108	(B,86,34)	RS1/16SS101J
	R	1045	(A,69,24)	RS1/16SS0R0J	R	1109	(A,91,34)	RS1/16SS101J
	R	1046	(B,74,29)	RS1/16SS473J	R	1110	(A,93,34)	RS1/16SS101J
D	R	1047	(A,67,52)	RS1/16SS101J	R	1111	(A,91,32)	RS1/16SS101J
	R	1048	(A,69,21)	RS1/16SS0R0J	R	1112	(A,91,31)	RS1/16SS101J
	R	1049	(A,66,22)	RS1/16SS473J	R	1113	(B,89,32)	RS1/16SS102J
	R	1050	(A,69,20)	RS1/16SS0R0J	R	1114	(B,91,27)	RS1/16SS102J
	R	1051	(A,71,52)	RS1/16SS102J	R	1115	(B,89,31)	RS1/16SS102J
	R	1052	(A,71,21)	RS1/16SS0R0J	R	1116	(A,83,24)	RS1/16SS473J
	R	1054	(A,71,51)	RS1/16SS102J	R	1117	(A,84,21)	RS1/16SS223J
	R	1055	(A,72,23)	RS1/16SS102J	R	1118	(A,88,24)	RS1/16SS472J
	R	1056	(A,72,51)	RS1/16SS102J	R	1120	(A,92,47)	RS1/16SS101J
	R	1057	(A,72,19)	RS1/16SS102J	R	1121	(A,91,45)	RS1/16SS101J
	R	1058	(A,73,53)	RS1/16SS102J	R	1122	(A,91,44)	RS1/16SS101J
E	R	1059	(A,72,21)	RS1/16SS102J	R	1123	(A,91,42) (US,CA)	RS1/16SS101J
	R	1060	(A,74,19)	RS1/16SS102J	R	1124	(B,89,42)	RS1/16SS102J
	R	1061	(A,76,56)	RS1/16SS101J	R	1125	(A,91,37)	RS1/16SS221J
	R	1062	(B,76,30)	RS1/16SS473J	R	1126	(A,91,36)	RS1/16SS221J
	R	1064	(A,72,52)	RS1/16SS472J	R	1127	(B,89,45)	RS1/16SS473J
	R	1065	(B,76,28)	RS1/16SS102J	R	1128	(B,84,35)	RS1/16SS104J
	R	1066	(A,77,24)	RS1/16SS0R0J	R	1129	(A,94,36)	RS1/16SS104J
	R	1067	(A,78,55)	RS1/16SS473J	R	1130	(B,84,34)	RS1/16SS104J
	R	1068	(A,79,24)	RS1/16SS0R0J	R	1131	(B,92,28)	RS1/16SS473J
	R	1069	(A,77,54)	RS1/16SS0R0J	R	1133	(B,92,25)	RS1/16SS473J
F	R	1070	(A,81,24)	RS1/16SS0R0J	R	1134	(B,91,31)	RS1/16SS473J
	R	1071	(A,85,56)	RS1/16SS473J	R	1135	(B,90,38)	RS1/16SS473J
	R	1072	(A,78,53)	RS1/16SS473J	R	1136	(B,91,32)	RS1/16SS473J
	R	1073	(A,79,52)	RS1/16SS0R0J	R	1137	(B,85,38) (US,CA)	RS1/16SS101J

1

2

3

4

5		6		7		8	
<u>Circuit Symbol and No.</u>		<u>Part No.</u>		<u>Circuit Symbol and No.</u>		<u>Part No.</u>	
R 1138	(B,92,38)	RS1/16SS473J		R 1252	(B,69,47) (US,CA)	RS1/16SS472J	
R 1139	(B,92,36)	RS1/16SS473J		R 1254	(B,65,68)	RS1/16SS223J	
R 1141	(A,96,34)	RS1/16SS104J		R 1255	(B,70,56) (US,CA)	RS1/16SS474J	
R 1143	(A,95,32)	RS1/16SS104J		R 1256	(B,69,46) (US,CA)	RS1/16SS101J	A
R 1144	(A,94,33)	RS1/16SS104J		R 1258	(B,68,54) (US,CA)	RS1/16SS473J	
R 1146	(B,81,30)	RS1/16SS473J		R 1259	(B,66,54)	RS1/16SS473J	
R 1147	(A,74,51) (US,CA)	RS1/16SS102J		R 1260	(B,66,51)	RS1/16SS473J	
R 1148	(A,74,54) (QG)	RS1/16SS102J		R 1261	(B,66,49)	RS1/16SS473J	
R 1151	(A,65,38)	RS1/16SS0R0J		R 1262	(B,73,46) (US,CA)	RS1/16SS101J	
R 1152	(A,77,19) (US,CA)	RS1/16SS470J		R 1263	(B,71,46) (US,CA)	RS1/16SS101J	
R 1153	(A,64,41)	RS1/16SS104J		R 1264	(B,72,46) (US,CA)	RS1/16SS101J	
R 1154	(A,63,42)	RS1/16SS101J		R 1265	(A,84,66) (US,CA)	RS1/16SS101J	
R 1155	(B,89,46)	RS1/16SS101J		R 1266	(A,73,57) (US,CA)	RS1/16SS101J	
R 1157	(B,91,45)	RS1/16SS473J		R 1267	(B,70,55) (US,CA)	RS1/16SS101J	
R 1201	(B,92,61)	RS1/16SS102J		R 1301	(A,59,39)	RS1/10SR511J	B
R 1202	(B,92,57) (US,CA)	RS1/16SS473J		R 1302	(A,59,36)	RS1/10SR392J	
R 1203	(B,92,58) (US,CA)	RS1/16SS102J		R 1311	(B,92,53)	RS1/16SS103J	
R 1204	(B,89,66) (US,CA)	RS1/16SS102J		R 1321	(A,89,19)	RS1/10SR223J	
R 1205	(B,92,55)	RS1/16SS102J		R 1322	(A,87,17)	RS1/10SR222J	
R 1206	(B,92,54)	RS1/16SS0R0J		R 1331	(A,59,72)	RS1/10SR223J	
R 1207	(B,90,45)	RS1/16SS104J		R 1332	(A,58,81)	RS1/10SR102J	
R 1208	(B,89,68) (US,CA)	RS1/16SS102J		R 1341	(B,80,38)	RS1/16SS103J	
R 1209	(B,91,64)	RS1/16SS102J		R 1342	(B,76,37)	RS1/10SR511J	
R 1210	(B,87,68) (US,CA)	RS1/16SS102J		R 1343	(B,73,37)	RS1/10SR392J	
R 1211	(B,92,49)	RS1/16SS473J		R 1353	(B,82,7)	RS1/16SS472J	C
R 1212	(B,84,41)	RS1/16SS472J		R 1354	(B,81,7)	RS1/16SS103J	
R 1213	(B,82,43)	RS1/16SS473J		R 1355	(B,76,7)	RS1/10SR221J	
R 1214	(B,87,66) (US,CA)	RS1/16SS102J		R 1361	(B,41,26)	RS1/16SS103J	
R 1215	(B,86,68) (US,CA)	RS1/16SS471J		R 1362	(B,47,23)	RS1/16SS103J	
R 1216	(B,85,66) (US,CA)	RS1/16SS102J		R 1363	(B,49,28)	RS1/16SS222J	
R 1218	(B,84,66) (US,CA)	RS1/16SS101J		R 1364	(B,41,27)	RS1/16SS182J	
R 1219	(B,83,40)	RS1/16SS102J		R 1365	(B,48,19)	RS1/16SS473J	
R 1220	(B,82,66) (US,CA)	RS1/16SS101J		R 1366	(B,38,25)	RS1/10SR103J	
R 1222	(B,90,43)	RS1/16SS473J		R 1367	(B,51,26)	RS1/16SS222J	
R 1223	(B,81,66) (US,CA)	RS1/16SS101J		R 1368	(B,33,20)	RS1/10SR223J	
R 1224	(B,82,45)	RS1/16SS0R0J		R 1369	(B,39,22)	RS1/10SR392J	D
R 1225	(B,80,66) (US,CA)	RS1/16SS101J		R 1370	(B,52,27)	RS1/16SS153J	
R 1226	(B,81,42)	RS1/16SS473J		R 1371	(B,35,27)	RS1/10SR392J	
R 1227	(B,77,43)	RS1/16SS473J		R 1372	(B,49,19)	RS1/16SS272J	
R 1228	(B,77,66)	RS1/16SS101J		R 1373	(B,42,22)	RS1/10SR103J	
R 1229	(B,75,42)	RS1/16SS0R0J		R 1374	(B,42,24)	RS1/16SS103J	
R 1230	(B,74,43)	RS1/16SS103J		R 1375	(B,40,22)	RS1/10SR392J	
R 1231	(B,71,44)	RS1/16SS0R0J		R 1376	(B,36,27)	RS1/10SR392J	
R 1232	(B,70,66)	RS1/16SS101J		R 1377	(B,50,27)	RS1/16SS122J	
R 1233	(B,71,63)	RS1/16SS101J		R 1378	(B,53,21)	RS1/16SS333J	
R 1236	(B,67,58)	RS1/16SS102J		R 1379	(B,43,24)	RS1/16SS102J	
R 1237	(B,70,58)	RS1/16SS102J		R 1380	(B,43,26)	RS1/16SS182J	E
R 1238	(B,67,57)	RS1/16SS102J		R 1382	(B,51,21)	RS1/16SS222J	
R 1239	(B,70,57) (US,CA)	RS1/16SS102J		R 1383	(B,49,27)	RS1/16SS243J	
R 1240	(B,67,55)	RS1/16SS101J		R 1403	(B,9,113)	RS1/4S0R0J	
R 1241	(B,70,53) (US,CA)	RS1/16SS101J		R 1404	(A,119,134)	RS1/4S0R0J	
R 1242	(B,70,46) (US,CA)	RS1/16SS101J		R 1431	(A,33,126)	RS1/10SR101J	
R 1243	(B,70,52)	RS1/16SS102J		R 1432	(B,48,143)	RS1/10SR102J	
R 1244	(B,70,51)	RS1/16SS102J		R 1433	(B,56,121)	RS1/10SR0R0J	
R 1245	(B,67,51)	RS1/16SS102J		R 1434	(B,47,124)	RS1/10SR102J	
R 1246	(B,68,50)	RS1/16SS102J		R 1435	(B,34,142)	RS1/10SR102J	
R 1247	(B,71,49) (US,CA)	RS1/16SS101J		R 1436	(B,130,96)	RS1/8SQ472J	F
R 1248	(B,66,63)	RS1/16SS101J		R 1437	(B,128,106) 2.2 kohm	CCN1335	
R 1250	(B,64,53)	RS1/16SS473J		R 1501	(B,82,130) 68 ohm	CCN1318	
R 1251	(B,70,48) (US,CA)	RS1/16SS472J		R 1502	(B,83,118)	RS1/4SA101J	

1

2

3

4

Circuit Symbol and No.**Part No.****Circuit Symbol and No.****Part No.**

R 1503	(B,81,123)	RS1/4SA101J	R 2001	(B,31,53)	RS1/16SS152J
R 1504	(B,72,114)	RS1/16SS101J	R 2002	(B,31,49)	RS1/16SS152J
R 1601	(B,74,34)	RS1/16SS473J	R 2003	(A,22,26) (US,CA)	RS1/4SA1R0J
R 1602	(B,80,35)	RS1/16SS222J	R 2004	(B,23,93)	RS1/16SS332J
R 1603	(B,80,36)	RS1/16SS222J	R 2005	(B,23,90)	RS1/16SS681J
R 1701	(B,82,20)	RS1/16SS102J	R 2006	(B,23,89)	RS1/16SS681J
R 1702	(B,84,26)	RS1/16SS0R0J	R 2007	(B,23,86)	RS1/16SS681J
R 1802	(A,95,62)	RS1/16SS102J	R 2008	(B,23,84)	RS1/16SS681J
R 1901	(B,59,106)	RS1/16SS472J	R 2009	(B,8,82) (US,CA)	RS1/16SS0R0J
R 1902	(B,48,107)	RS1/16SS472J	R 2011	(B,23,81) (US,CA)	RS1/16SS332J
R 1903	(B,48,109)	RS1/16SS473J	R 2012	(B,31,66) (US,CA)	RS1/16SS681J
R 1905	(B,68,123)	RS1/16SS103J	R 2013	(B,23,64)	RS1/16SS681J
R 1907	(B,68,122)	RS1/16SS472J	R 2014	(B,24,56) (US,CA)	RS1/16SS222J
R 1908	(B,65,121)	RS1/10SR511J	R 2015	(B,24,55) (US,CA)	RS1/16SS222J
R 1909	(A,65,112)	RS1/16SS223J	R 2016	(B,23,53) (US,CA)	RS1/16SS222J
R 1910	(A,68,122)	RS1/16SS103J	R 2017	(B,23,51) (US,CA)	RS1/16SS222J
R 1912	(A,68,121)	RS1/16SS104J	R 2018	(B,23,80) (US,CA)	RS1/16SS682J
R 1913	(A,68,118)	RS1/16SS103J	R 2020	(B,23,100) (US,CA)	RS1/16SS0R0J
R 1914	(A,68,119)	RS1/16SS103J	R 2021	(B,23,92)	RS1/16SS682J
R 1915	(A,68,120)	RS1/16SS103J	R 2022	(B,23,99) (QG)	RS1/16SS0R0J
R 1916	(B,67,113)	RS1/16SS103J	R 2101	(A,29,120)	RS1/16SS223J
R 1917	(A,66,115)	RS1/16SS103J	R 2102	(B,22,116) (US,CA)	RS1/10SR0R0J
R 1918	(B,47,108)	RS1/16SS0R0J	R 2103	(B,13,114) (US,CA)	RS1/10SR0R0J
R 1919	(B,58,107)	RS1/16SS0R0J	R 2104	(A,28,120)	RS1/16SS103J
R 1920	(A,64,112)	RS1/16SS102J	R 2105	(A,14,116)	RS1/16SS104J
R 1921	(B,66,113)	RS1/16SS473J	R 2201	(B,101,8)	RS1/16SS473J
R 1922	(B,58,121)	RS1/16SS472J	R 2202	(B,118,14)	RN1/16SE1000D
R 1923	(B,65,113)	RS1/16SS0R0J	R 2203	(B,118,17)	RN1/16SE1000D
R 1924	(B,63,114)	RS1/16SS103J	R 2204	(B,106,12)	RS1/16SS682J
R 1925	(B,48,110)	RS1/16SS0R0J	R 2205	(B,104,9)	RS1/16SS472J
R 1926	(B,62,114)	RS1/16SS0R0J	R 2206	(B,113,9)	RS1/16SS105J
R 1927	(B,62,118)	RS1/16SS103J	R 2207	(B,107,10)	RS1/16SS682J
R 1928	(B,58,120)	RS1/16SS5101D	R 2208	(B,108,10)	RS1/16SS472J
R 1929	(A,65,109)	RS1/16SS105J	R 2209	(B,117,16)	RS1/16SS223J
R 1930	(A,63,110)	RS1/16SS222J	R 2210	(B,121,12)	RS1/16SS470J
R 1931	(A,63,109)	RS1/16SS0R0J	R 2211	(B,122,8)	RS1/16SS470J
R 1932	(B,63,108)	RS1/16SS101J	R 2212	(B,122,7)	RS1/16SS470J
R 1933	(A,58,106)	RS1/16SS101J	R 2213	(B,116,13)	RS1/16SS223J
R 1934	(B,60,109)	RS1/16SS102J	R 2214	(B,104,11)	RS1/16SS221J
R 1935	(B,60,110)	RS1/16SS102J	R 2215	(B,100,8)	RS1/16SS221J
R 1936	(B,56,113)	RS1/16SS104J	R 2216	(B,104,7)	RS1/16SS101J
R 1937	(B,59,111)	RS1/16SS102J	R 2217	(B,107,9)	RS1/16SS101J
R 1938	(A,62,101)	RS1/16SS103J	R 2218	(B,109,8)	RS1/16SS101J
R 1939	(B,51,110)	RS1/16SS223J	R 2301	(B,35,52) (QG)	RS1/16SS2402D
R 1940	(B,55,118)	RS1/16SS0R0J	R 2302	(B,36,55) (US,CA)	RS1/16SS0R0J
R 1941	(B,53,118)	RS1/16SS473J	R 2303	(B,35,49) (QG)	RS1/16SS2402D
R 1942	(A,51,114)	RS1/16SS0R0J	R 2304	(B,36,47) (US,CA)	RS1/16SS0R0J
R 1943	(A,51,116)	RS1/16SS0R0J	R 2305	(B,36,52) (QG)	RS1/16SS3002D
R 1944	(B,66,101)	RS1/16SS473J	R 2306	(B,36,49) (QG)	RS1/16SS3002D
R 1945	(B,43,111)	RS1/16SS101J	R 2307	(B,36,54) (QG)	RS1/16SS0R0J
R 1948	(B,45,110)	RS1/16SS473J	R 2308	(B,36,48) (QG)	RS1/16SS0R0J
R 1949	(B,61,109)	RS1/16SS473J	R 2309	(B,44,53) (US,CA)	RS1/16SS0R0J
R 1950	(B,52,111)	RS1/16SS0R0J	R 2310	(B,44,49) (US,CA)	RS1/16SS0R0J
R 1952	(B,66,116)	RS1/16SS102J	R 2311	(B,42,53) (QG)	RS1/16SS0R0J
R 1953	(B,58,106)	RS1/16SS221J	R 2312	(B,42,49) (QG)	RS1/16SS0R0J
R 1954	(B,50,107)	RS1/16SS221J	R 2321	(A,85,122)	RS1/10SR1002D
R 1955	(B,50,109)	RS1/16SS221J	R 2322	(A,83,122)	RS1/10SR1002D
R 1956	(B,58,109)	RS1/16SS221J	R 2323	(A,81,122)	RS1/10SR1002D
R 1957	(B,58,108)	RS1/16SS221J	R 2324	(A,82,122)	RS1/10SR1002D
R 1958	(B,50,108)	RS1/16SS221J	R 2325	(A,86,119)	RS1/10SR1002D
			R 2326	(A,81,119)	RS1/10SR1002D

1

2

3

4

5		6		7		8	
<u>Circuit Symbol and No.</u>		<u>Part No.</u>		<u>Circuit Symbol and No.</u>		<u>Part No.</u>	
R 2327	(A,87,119)	RS1/10SR1002D		R 2439	(B,70,100)	RS1/10SR104J	
R 2328	(A,82,119)	RS1/10SR1002D		R 2440	(B,87,102)	RS1/10SR104J	
R 2329	(A,88,116)	RS1/16SS3302D		R 2441	(B,84,99)	RS1/16SS680J	A
R 2330	(A,84,117)	RS1/16SS3302D		R 2442	(B,69,99)	RS1/16SS680J	
R 2331	(A,80,117)	RS1/16SS3302D		R 2443	(A,74,80)	RS1/10SR3302D	
R 2332	(A,83,117)	RS1/16SS3302D		R 2444	(A,72,80)	RS1/10SR391J	
R 2333	(A,88,115)	RS1/16SS3302D		R 2446	(B,72,105)	RS1/16SS680J	
R 2334	(A,83,115)	RS1/16SS3302D		R 2447	(B,85,106)	RS1/16SS680J	
R 2335	(A,85,114)	RS1/16SS3302D		R 2449	(A,75,86)	RS1/10SR391J	
R 2336	(A,81,114)	RS1/16SS3302D		R 2450	(A,74,86)	RS1/10SR3302D	
R 2351	(A,78,121)	RS1/4SA112J		R 2451	(B,80,106)	RS1/16SS680J	
R 2352	(A,75,121)	RS1/10SR3902D		R 2452	(B,76,106)	RS1/16SS680J	
R 2353	(A,71,121)	RS1/10SR3902D		R 2453	(B,77,84)	RS1/10SR224J	
R 2354	(B,75,121)	RS1/10SR3902D		R 2454	(B,74,106)	RS1/16SS680J	B
R 2355	(B,71,121)	RS1/10SR3902D		R 2455	(B,68,104)	RS1/16SS680J	
R 2356	(A,73,121)	RS1/10SR3902D		R 2456	(B,83,106)	RS1/16SS680J	
R 2357	(A,72,121)	RS1/10SR3902D		R 2457	(B,78,106)	RS1/16SS680J	
R 2358	(B,73,121)	RS1/10SR3902D		R 2458	(B,79,86)	RS1/10SR8201D	
R 2359	(B,72,121)	RS1/10SR3902D		R 2459	(B,71,86)	RS1/10SR224J	
R 2360	(A,79,117)	RS1/16SS4701D		R 2460	(B,68,86)	RS1/10SR102J	
R 2361	(A,75,117)	RS1/16SS4701D		R 2461	(B,85,87)	RS1/10SR102J	
R 2362	(A,70,114)	RS1/16SS4701D		R 2501	(B,108,55) (US,CA)	RS1/16SS101J	
R 2363	(A,68,116)	RS1/16SS4701D		R 2502	(B,105,54) (US,CA)	RS1/16SS102J	
R 2364	(A,79,115)	RS1/16SS3902D		R 2503	(A,105,51) (US,CA)	RS1/16SS221J	
R 2365	(A,69,114)	RS1/16SS3902D		R 2504	(A,107,53) (US,CA)	RS1/16SS221J	C
R 2366	(A,77,117)	RS1/16SS3902D		R 2505	(A,107,54) (US,CA)	RS1/16SS221J	
R 2367	(A,71,114)	RS1/16SS3902D		R 2506	(A,99,51) (US,CA)	RS1/16SS102J	
R 2368	(A,74,114)	RS1/16SS0R0J		R 2507	(A,101,51) (US,CA)	RS1/16SS102J	
R 2381	(B,103,36)	RS1/16SS101J		R 2508	(B,103,57) (US,CA)	RS1/16SS470J	
R 2382	(B,105,36)	RS1/16SS332J		R 2509	(A,107,56) (US,CA)	RS1/16SS104J	
R 2383	(B,108,37)	RS1/16SS273J		R 2510	(A,103,58) (US,CA)	RS1/16SS104J	
R 2391	(B,99,52) (US,CA)	RS1/16SS393J		R 2521	(B,108,43)	RS1/16SS101J	
R 2392	(B,102,54) (US,CA)	RS1/16SS103J		R 2522	(B,107,40)	RS1/16SS102J	
R 2393	(B,101,52) (US,CA)	RS1/16SS152J		R 2523	(A,107,42)	RS1/16SS221J	
R 2394	(B,100,63) (US,CA)	RS1/16SS103J		R 2524	(A,107,43)	RS1/16SS221J	
R 2395	(B,102,52) (US,CA)	RS1/16SS333J		R 2525	(A,107,44)	RS1/16SS221J	D
R 2401	(B,97,40)	RS1/16SS473J		R 2526	(A,106,41)	RS1/16SS102J	
R 2402	(B,99,49)	RS1/16SS473J		R 2527	(A,103,40)	RS1/16SS102J	
R 2403	(B,101,39)	RS1/16SS333J		R 2528	(B,103,44)	RS1/16SS100J	
R 2404	(B,100,50)	RS1/16SS333J		R 2529	(A,107,46)	RS1/16SS104J	
R 2411	(B,65,40)	RS1/16SS473J		R 2530	(A,103,48)	RS1/16SS104J	
R 2412	(B,70,38)	RS1/16SS473J		R 2541	(B,62,29)	RS1/16SS473J	
R 2413	(B,61,40)	RS1/16SS333J		R 2546	(B,56,37)	RS1/16SS102J	
R 2414	(B,68,40)	RS1/16SS333J		R 2547	(B,57,37)	RS1/16SS102J	
R 2421	(B,72,88)	RS1/16SS1002D		R 2548	(B,60,27)	RS1/16SS104J	
R 2422	(B,83,88)	RS1/16SS1002D		R 2549	(B,61,30)	RS1/16SS104J	
R 2423	(B,82,86)	RS1/16SS1202D		R 2550	(B,45,33)	RS1/16SS0R0J	E
R 2424	(B,72,89)	RS1/16SS1202D		R 2551	(B,54,32)	RS1/16SS102J	
R 2425	(B,82,90)	RS1/16SS1502D		R 2552	(B,51,31)	RS1/16SS100J	
R 2426	(B,71,91)	RS1/16SS1502D		R 2602	(A,26,29)	RS1/16SS101J	
R 2427	(B,83,94)	RS1/16SS1502D		R 2603	(A,26,28)	RS1/16SS101J	
R 2428	(B,72,93)	RS1/16SS1502D		R 2604	(A,27,27)	RS1/16SS101J	
R 2429	(A,69,86)	RS1/10SR3302D		R 2605	(A,27,25)	RS1/16SS101J	
R 2430	(A,68,79)	RS1/10SR391J		R 2606	(A,26,26)	RS1/16SS102J	
R 2432	(B,71,100)	RS1/10SR104J		R 2609	(B,39,35)	RS1/16SS220J	
R 2433	(B,83,101)	RS1/10SR104J		R 2611	(B,44,34)	RS1/16SS220J	
R 2434	(B,71,98)	RS1/16SS680J		R 2612	(B,46,34)	RS1/16SS220J	F
R 2435	(B,84,101)	RS1/16SS680J		R 2613	(B,38,35)	RS1/16SS0R0J	
R 2436	(A,70,86)	RS1/10SR391J		R 2614	(B,47,37)	RS1/16SS220J	
R 2437	(A,71,79)	RS1/10SR3302D		R 2616	(B,49,37)	RS1/16SS220J	

1

2

3

4

Circuit Symbol and No.**Part No.****Circuit Symbol and No.****Part No.**

R 2617	(B,50,37)	RS1/16SS220J	R 3113	(A,89,107)	RS1/8SQ511J
R 2618	(A,51,14)	RS1/16SS0R0J	R 3114	(A,89,109)	RS1/8SQ511J
R 2619	(B,58,27)	RS1/16SS473J	R 3115	(B,96,107)	RS1/16SS564J
R 2701	(B,62,76) (US,CA)	RS1/16SS333J	R 3116	(A,94,102)	RS1/4SA101J
R 2702	(B,64,80) (US,CA)	RS1/16SS333J	R 3117	(A,110,134)	RS1/8SQ0R0J
R 2703	(B,68,71) (US,CA)	RS1/16SS333J	R 3171	(B,89,74)	RS1/16SS102J
R 2704	(B,69,74) (US,CA)	RS1/16SS333J	R 3172	(B,92,74)	RS1/16SS103J
R 2705	(B,72,74) (US,CA)	RS1/10SR181J	R 3173	(B,98,78)	RS1/16SS103J
R 2706	(B,71,73) (US,CA)	RS1/10SR181J	R 3174	(B,96,78)	RS1/16SS222J
R 2801	(B,43,93) (QG)	RS1/16SS104J	R 3175	(B,90,71)	RS1/16SS472J
R 2802	(B,42,91) (QG)	RS1/16SS102J	R 3176	(A,85,80)	RS1/16SS0R0J
R 2803	(B,34,96) (QG)	RS1/16SS105J	R 3201	(B,71,36)	RS1/16SS104J
R 2804	(B,44,95) (QG)	RS1/16SS473J	R 3203	(B,142,69)	RS1/10SR0R0J
R 2805	(B,35,93) (QG)	RS1/16SS223J	R 3204	(B,126,64)	RS1/16SS271J
R 2806	(B,31,91) (QG)	RS1/16SS0R0J	R 3205	(B,141,70)	RS1/16SS753J
R 2807	(B,35,92) (QG)	RS1/16SS223J	R 3206	(B,144,70)	RS1/16SS102J
R 2808	(B,29,96) (QG)	RS1/16SS105J	R 3207	(B,151,76)	RS1/16SS2701D
R 2809	(B,31,104) (QG)	RS1/16SS105J	R 3208	(B,133,73)	RS1/16SS2701D
R 2810	(B,33,104) (QG)	RS1/16SS105J	R 3209	(B,151,74)	RS1/16SS6201D
R 3011	(A,102,106)	RS1/16SS0R0J	R 3210	(B,133,72)	RS1/16SS1802D
R 3013	(A,97,104)	RS1/16SS223J	R 3211	(B,133,70)	RS1/16SS8201D
R 3021	(B,102,76)	RS1/10SR223J	R 3212	(B,151,73)	RS1/16SS9101D
R 3022	(B,104,69)	RS1/10SR472J	R 3213	(B,152,74)	RS1/16SS1002D
R 3023	(B,102,74)	RS1/16SS223J	R 3214	(B,132,71)	RS1/16SS8201D
R 3024	(B,102,69)	RS1/10SR223J	R 3215	(B,131,70)	RS1/16SS8202D
R 3025	(B,102,67)	RS1/16SS332J	R 3216	(B,153,74)	RS1/16SS9102D
R 3026	(B,100,71)	RS1/16SS393J	R 3217	(B,153,80)	RS1/16SS4R7J
R 3027	(B,99,68)	RS1/16SS102J	R 3218	(B,131,80)	RS1/16SS4R7J
R 3028	(B,98,68)	RS1/16SS393J	R 3219	(B,148,81)	RS1/16SS220J
R 3029	(B,104,66)	RS1/16SS102J	R 3220	(B,137,81)	RS1/16SS220J
R 3031	(B,79,26)	RS1/16SS223J	R 3221	(B,154,72)	RS1/8SQ0R0J
R 3032	(B,82,26)	RS1/16SS473J	R 3222	(B,130,68)	RS1/8SQ0R0J
R 3033	(B,75,25)	RS1/16SS333J	R 3223	(B,146,83)	RS1/16SS101J
R 3034	(B,75,27)	RS1/16SS103J	R 3224	(B,139,83)	RS1/16SS101J
R 3041	(B,137,117)	RS1/10SR102J	R 3225	(B,150,84) 0.047 ohm	CCN1167
R 3042	(B,140,117)	RS1/10SR122J	R 3226	(B,134,84) 0.047 ohm	CCN1167
R 3043	(B,135,115)	RS1/10SR223J	R 3227	(B,135,78)	RS1/16SS0R0J
R 3044	(B,141,115)	RS1/16SS272J	R 3228	(B,148,78)	RS1/16SS0R0J
R 3045	(B,141,113)	RS1/16SS223J	R 3229	(B,152,84) 0.047 ohm	CCN1167
R 3046	(B,135,106)	RS1/16SS223J	R 3230	(B,133,84) 0.047 ohm	CCN1167
R 3048	(B,139,106)	RS1/16SS222J	R 3231	(B,153,84) 0.047 ohm	CCN1167
R 3049	(B,137,108)	RS1/16SS223J	R 3232	(B,131,84) 0.047 ohm	CCN1167
R 3051	(B,138,108)	RS1/16SS222J	R 3235	(B,137,82)	RS1/16SS4R7J
R 3053	(B,138,105)	RS1/16SS103J	R 3236	(B,148,80)	RS1/16SS4R7J
R 3054	(B,138,122)	RS1/10SR5601D	R 3251	(B,109,84)	RS1/16SS753J
R 3055	(B,134,121)	RS1/16SS103J	R 3252	(B,111,85)	RS1/16SS9101D
R 3071	(B,72,25)	RS1/10SR3301D	R 3253	(B,111,88)	RS1/16SS1002D
R 3072	(B,72,24)	RS1/10SR3301D	R 3254	(B,107,89)	RS1/16SS0R0J
R 3073	(B,67,24)	RS1/10SR472J	R 3255	(B,109,88)	RS1/16SS1001D
R 3074	(B,70,21)	RS1/10SR123J	R 3256	(B,107,88)	RS1/16SS4701D
R 3101	(A,88,96)	RS1/8SQ511J	R 3257	(B,106,88)	RS1/16SS4702D
R 3102	(A,88,92)	RS1/8SQ511J	R 3258	(B,108,86)	RS1/16SS4700D
R 3103	(A,96,96)	RS1/16SS820J	R 3302	(A,108,70)	RS1/16SS102J
R 3104	(B,95,101)	RS1/16SS223J	R 3303	(A,64,71)	RS1/16SS102J
R 3105	(B,99,104)	RS1/16SS334J	R 3304	(A,77,72)	RS1/16SS470J
R 3106	(B,93,106)	RS1/16SS223J	R 3305	(A,75,77)	RS1/16SS102J
R 3107	(B,94,105)	RS1/10SR181J	R 3306	(A,81,72)	RS1/16SS470J
R 3108	(B,96,104)	RS1/16SS472J	R 3322	(A,64,57)	RS1/16SS102J
R 3109	(A,92,92)	RS1/16SS225J	R 3323	(A,58,66)	RS1/16SS1002D
R 3111	(A,96,77)	RS1/16SS473J	R 3324	(A,58,64)	RS1/16SS3902D

1

2

3

4

5		6		7		8	
<u>Circuit Symbol and No.</u>		<u>Part No.</u>		<u>Circuit Symbol and No.</u>		<u>Part No.</u>	
R 3325	(A,59,64)	RS1/16SS5101D		R 4029	(A,126,45)	RS1/16SS103J	
R 3342	(A,109,59)	RS1/16SS102J		R 4030	(A,129,44)	RS1/16SS103J	
R 3343	(A,154,60)	RS1/16SS102J		R 4031	(B,134,54)	RS1/16SS103J	A
R 3347	(A,160,59)	RS1/4SA750J		R 4032	(A,131,48)	RS1/16SS103J	
R 3362	(B,168,65)	RS1/16SS102J		R 4034	(A,130,48)	RS1/16SS103J	
R 3381	(B,142,102)	RS1/16SS303J		R 4035	(B,126,29)	RS1/16SS103J	
R 3383	(B,143,101)	RS1/16SS562J		R 4036	(B,156,53)	RS1/16SS103J	
R 3384	(B,144,100)	RS1/16SS223J		R 4037	(B,135,37)	RS1/16SS104J	
R 3385	(B,145,94)	RS1/16SS303J		R 4038	(A,147,24)	RS1/16SS104J	
R 3386	(B,144,96)	RS1/16SS223J		R 4039	(B,143,30)	RS1/16SS104J	
R 3387	(B,140,93)	RS1/16SS223J		R 4040	(B,147,51)	RS1/16SS104J	
R 3388	(B,145,93)	RS1/16SS333J		R 4041	(B,146,51)	RS1/16SS104J	
R 3389	(B,141,92)	RS1/16SS272J		R 4042	(B,145,51)	RS1/16SS104J	
R 3390	(B,146,100)	RS1/16SS222J		R 4043	(A,140,50)	RS1/16SS104J	B
R 3391	(B,152,97)	RS1/16SS223J		R 4044	(B,144,50)	RS1/16SS104J	
R 3392	(B,150,102)	RS1/16SS220J		R 4045	(B,142,44)	RS1/16SS104J	
R 3393	(B,148,107)	RS1/16SS561J		R 4046	(A,150,53)	RS1/16SS104J	
R 3401	(B,44,102)	RS1/16SS473J		R 4047	(A,148,51)	RS1/16SS104J	
R 3402	(B,44,105)	RS1/16SS473J		R 4048	(A,148,54)	RS1/16SS104J	
R 3403	(B,47,99)	RS1/16SS473J		R 4049	(A,147,54)	RS1/16SS104J	
R 3404	(B,40,104)	RS1/16SS223J		R 4050	(B,148,51)	RS1/16SS104J	
R 3405	(B,48,99)	RS1/10SR122J		R 4051	(A,147,51)	RS1/16SS104J	
R 3406	(B,50,99)	RS1/16SS104J		R 4053	(A,122,36)	RS1/16SS104J	
R 3407	(B,46,93)	RS1/16SS391J		R 4054	(A,144,50)	RS1/16SS104J	
R 3441	(B,97,16)	RS1/16SS102J		R 4055	(B,125,29)	RS1/16SS104J	C
R 3442	(A,104,22)	RS1/16SS5602D		R 4056	(A,153,51)	RS1/16SS104J	
R 3443	(A,102,22)	RS1/16SS5601D		R 4057	(B,152,48)	RS1/16SS104J	
R 3444	(A,101,23)	RS1/16SS6801D		R 4058	(B,151,50)	RS1/16SS104J	
R 3462	(B,66,23)	RS1/16SS103J		R 4059	(A,142,49)	RS1/16SS104J	
R 3463	(B,59,21)	RS1/16SS331J		R 4060	(A,138,54)	RS1/16SS104J	
R 3482	(B,23,14)	RS1/16SS102J		R 4061	(A,151,51)	RS1/16SS104J	
R 3501	(A,80,62)	RS1/16SS102J		R 4064	(B,130,39)	RS1/16SS0R0J	
R 3502	(A,69,63)	RS1/10SR103J		R 4068	(A,144,21)	RS1/16SS104J	
R 3553	(B,104,99)	RS1/16SS1000D		R 4069	(A,143,23)	RS1/16SS104J	
R 3554	(B,102,97)	CCN1167	0.047 ohm	R 4070	(A,145,24)	RS1/16SS104J	
R 3559	(B,110,90)	RS1/16SS1503D		R 4071	(B,130,29)	RS1/16SS104J	D
R 3560	(B,112,90)	RS1/16SS1503D		R 4072	(A,127,31)	RS1/16SS104J	
R 3561	(B,107,100)	RS1/16SS1002D		R 4073	(A,127,32)	RS1/16SS104J	
R 3562	(B,111,99)	RS1/16SS1802D		R 4074	(B,129,29)	RS1/16SS104J	
R 3563	(B,115,92)	RS1/16SS1002D		R 4075	(B,132,37)	RS1/16SS104J	
R 3564	(B,108,97)	RS1/16SS5101D		R 4076	(A,160,40)	RS1/16SS104J	
R 3565	(B,108,98)	RS1/16SS0R0J		R 4077	(A,157,40)	RS1/16SS104J	
R 3566	(B,109,99)	RS1/16SS5603D		R 4078	(B,156,40)	RS1/16SS104J	
R 3567	(B,115,91)	RS1/16SS2701D		R 4079	(A,159,42)	RS1/16SS104J	
R 3568	(B,113,95)	RS1/16SS1002D		R 4080	(A,157,42)	RS1/16SS104J	
R 3569	(B,112,99)	RS1/16SS1002D		R 4081	(B,156,50)	RS1/16SS104J	
R 4004	(B,142,54)	RS1/16SS103J		R 4082	(A,149,23)	RS1/16SS104J	E
R 4006	(A,157,44)	RS1/16SS103J		R 4083	(A,149,21)	RS1/16SS104J	
R 4009	(A,156,46)	RS1/16SS103J		R 4084	(B,151,25)	RS1/16SS104J	
R 4011	(A,156,48)	RS1/16SS103J		R 4085	(B,144,30)	RS1/16SS104J	
R 4012	(B,141,54)	RS1/16SS103J		R 4086	(A,147,23)	RS1/16SS104J	
R 4013	(A,126,43)	RS1/16SS103J		R 4089	(A,158,50)	RS1/16SS104J	
R 4014	(B,144,54)	RS1/16SS103J		R 4090	(A,156,50)	RS1/16SS104J	
R 4015	(B,143,54)	RS1/16SS103J		R 4091	(A,157,50)	RS1/16SS104J	
R 4020	(A,125,47)	RS1/16SS103J		R 4093	(A,140,53)	RS1/16SS104J	
R 4022	(A,128,48)	RS1/16SS103J		R 4094	(A,149,51)	RS1/16SS104J	
R 4023	(A,147,21)	RS1/16SS103J		R 4095	(B,149,51)	RS1/16SS103J	F
R 4024	(A,145,21)	RS1/16SS103J		R 4100	(B,157,28)	RS1/16SS104J	
R 4027	(B,126,24)	RS1/16SS103J		R 4101	(B,157,26)	RS1/16SS104J	
R 4028	(B,124,24)	RS1/16SS103J		R 4102	(A,163,29)	RS1/16SS104J	

	1		2		3		4	
	<u>Circuit Symbol and No.</u>		<u>Part No.</u>		<u>Circuit Symbol and No.</u>		<u>Part No.</u>	
	R 4103	(B,154,25)	RS1/16SS104J		R 4302	(B,132,24)	RS1/16SS101J	
	R 4104	(A,163,28)	RS1/16SS104J		R 4303	(A,132,24)	RS1/16SS101J	
A	R 4105	(A,163,27)	RS1/16SS104J		R 4304	(A,133,24)	RS1/16SS101J	
	R 4106	(A,163,25)	RS1/16SS104J		R 4305	(A,133,22)	RS1/16SS101J	
	R 4107	(A,155,24)	RS1/16SS104J		R 4306	(A,134,24)	RS1/16SS101J	
	R 4108	(A,163,24)	RS1/16SS104J		R 4307	(A,134,22)	RS1/16SS101J	
	R 4109	(B,156,26)	RS1/16SS104J		R 4308	(A,135,20)	RS1/16SS101J	
	R 4110	(B,154,27)	RS1/16SS104J		R 4309	(B,131,24)	RS1/16SS101J	
	R 4111	(B,158,20)	RS1/16SS104J		R 4310	(B,131,29)	RS1/16SS470J	
	R 4112	(B,159,21)	RS1/16SS104J		R 4311	(A,148,12)	RS1/16SS101J	
	R 4113	(B,154,24)	RS1/16SS104J		R 4312	(A,147,13)	RS1/16SS470J	
	R 4114	(A,163,23)	RS1/16SS104J		R 4313	(A,148,14)	RS1/16SS470J	
	R 4115	(A,153,20)	RS1/16SS104J		R 4314	(A,153,14)	RS1/16SS470J	
B	R 4116	(A,136,54)	RS1/16SS103J		R 4315	(A,154,14)	RS1/16SS470J	
	R 4117	(A,122,33)	RS1/16SS104J		R 4316	(A,156,14)	RS1/16SS470J	
	R 4118	(B,139,54)	RS1/16SS104J		R 4317	(A,157,14)	RS1/16SS470J	
	R 4119	(A,135,54)	RS1/16SS103J		R 4318	(A,158,14)	RS1/16SS470J	
	R 4121	(A,134,54)	RS1/16SS104J		R 4319	(A,159,14)	RS1/16SS470J	
	R 4122	(A,151,22)	RS1/16SS101J		R 4320	(A,131,28)	RS1/16SS101J	
	R 4123	(A,153,22)	RS1/16SS101J		R 4321	(A,130,18)	RS1/16SS101J	
	R 4124	(A,154,24)	RS1/16SS101J		R 4322	(A,130,20)	RS1/16SS101J	
	R 4125	(A,150,22)	RS1/16SS101J		R 4323	(A,130,22)	RS1/16SS101J	
	R 4126	(A,153,24)	RS1/16SS101J		R 4324	(B,129,24)	RS1/16SS101J	
	R 4127	(A,159,25)	RS1/16SS101J		R 4325	(A,130,24)	RS1/16SS101J	
C	R 4128	(A,152,24)	RS1/16SS101J		R 4326	(A,129,26)	RS1/16SS101J	
	R 4129	(A,151,24)	RS1/16SS101J		R 4327	(A,128,28)	RS1/16SS101J	
	R 4130	(A,161,27)	RS1/16SS101J		R 4328	(A,129,28)	RS1/16SS101J	
	R 4131	(A,157,25)	RS1/16SS101J		R 4329	(A,128,24)	RS1/16SS101J	
	R 4132	(B,153,29)	RS1/16SS101J		R 4330	(A,128,26)	RS1/16SS101J	
	R 4133	(B,154,23)	RS1/16SS101J		R 4331	(A,148,11)	RS1/16SS101J	
	R 4134	(A,157,26)	RS1/16SS101J		R 4332	(A,152,10)	RS1/16SS470J	
	R 4135	(A,161,28)	RS1/16SS101J		R 4333	(A,153,10)	RS1/16SS470J	
	R 4136	(B,153,28)	RS1/16SS101J		R 4334	(A,154,10)	RS1/16SS470J	
	R 4137	(A,157,28)	RS1/16SS101J		R 4335	(A,155,10)	RS1/16SS470J	
	R 4138	(B,142,23)	RS1/16SS470J		R 4336	(A,156,10)	RS1/16SS470J	
D	R 4139	(A,141,24)	RS1/16SS470J		R 4337	(A,157,10)	RS1/16SS470J	
	R 4140	(A,142,22)	RS1/16SS470J		R 4338	(A,158,10)	RS1/16SS470J	
	R 4141	(B,141,23)	RS1/16SS470J		R 4339	(A,159,10)	RS1/16SS470J	
	R 4142	(A,140,24)	RS1/16SS470J		R 4401	(A,161,39)	RS1/16SS221J	
	R 4143	(A,141,22)	RS1/16SS470J		R 4402	(A,161,42)	RS1/16SS221J	
	R 4144	(B,140,23)	RS1/16SS470J		R 4403	(A,161,41)	RS1/16SS221J	
	R 4145	(A,139,24)	RS1/16SS470J		R 4404	(A,159,37)	RS1/16SS221J	
	R 4146	(A,140,22)	RS1/16SS470J		R 4405	(A,157,37)	RS1/16SS221J	
	R 4147	(B,139,23)	RS1/16SS470J		R 4406	(A,161,37)	RS1/16SS221J	
	R 4148	(A,138,24)	RS1/16SS470J		R 4407	(A,157,36)	RS1/16SS221J	
	R 4149	(A,138,22)	RS1/16SS470J		R 4408	(A,159,36)	RS1/16SS221J	
E	R 4150	(B,137,23)	RS1/16SS470J		R 4409	(B,152,37)	RS1/16SS221J	
	R 4151	(B,134,51)	RS1/16SS151J		R 4410	(A,159,35)	RS1/16SS221J	
	R 4152	(A,137,24)	RS1/16SS470J		R 4411	(A,161,35)	RS1/16SS221J	
	R 4153	(A,137,51)	RS1/16SS151J		R 4412	(A,157,39)	RS1/16SS221J	
	R 4154	(A,137,22)	RS1/16SS470J		R 4413	(A,161,40)	RS1/16SS221J	
	R 4155	(B,135,23)	RS1/16SS470J		R 4414	(A,161,43)	RS1/16SS220J	
	R 4156	(A,135,51)	RS1/16SS151J		R 4415	(A,161,38)	RS1/16SS221J	
	R 4157	(A,136,51)	RS1/16SS151J		R 4416	(A,159,38)	RS1/16SS221J	
	R 4158	(B,133,51)	RS1/16SS151J		R 4417	(B,151,37)	RS1/16SS221J	
	R 4160	(B,135,38)	RS1/16SS0R0J		R 4418	(A,163,35)	RS1/16SS221J	
F	R 4162	(A,123,33)	RS1/16SS0R0J		R 4419	(A,159,33)	RS1/16SS221J	
	R 4168	(A,129,35)	RS1/16SS221J		R 4420	(B,154,37)	RS1/16SS221J	
	R 4176	(A,122,59)	RS1/16SS104J		R 4421	(A,159,32)	RS1/16SS221J	
	R 4301	(B,133,24)	RS1/16SS101J		R 4422	(A,162,33)	RS1/16SS221J	

5		6		7		8	
<u>Circuit Symbol and No.</u>		<u>Part No.</u>		<u>Circuit Symbol and No.</u>		<u>Part No.</u>	
R 4423	(B,151,36)	RS1/16SS221J		R 4540	(B,122,43)	RS1/16SS0R0J	
R 4424	(B,168,61)	RS1/16SS0R0J		R 4541	(B,126,42)	RS1/16SS6201D	
R 4427	(B,159,34)	RS1/16SS103J		R 4603	(A,88,129)	RS1/10SR104J	A
R 4429	(B,158,36)	RS1/16SS221J		R 4701	(A,171,50)	RS1/16SS104J	
R 4430	(B,160,36)	RS1/16SS221J		R 4703	(A,166,58)	RS1/10SR103J	
R 4431	(B,160,34)	RS1/16SS221J		R 4705	(A,165,55)	RS1/16SS0R0J	
R 4432	(B,161,36)	RS1/16SS221J		R 4706	(A,162,50)	RS1/16SS104J	
R 4433	(B,161,34)	RS1/16SS221J		R 4707	(A,167,60)	RS1/10SR102J	
R 4434	(B,162,36)	RS1/16SS221J		R 4709	(A,166,48)	RS1/16SS103J	
R 4435	(B,162,34)	RS1/16SS221J		R 4710	(A,167,48)	RS1/16SS103J	
R 4436	(B,163,36)	RS1/16SS221J		R 4711	(A,162,51)	RS1/16SS101J	
R 4437	(B,164,34)	RS1/16SS221J		R 4712	(A,162,53)	RS1/16SS101J	
R 4438	(B,165,36)	RS1/16SS221J		R 4713	(A,171,52)	RS1/16SS102J	
R 4439	(B,166,34)	RS1/16SS221J		R 4752	(B,165,10)	RS1/16SS0R0J	B
R 4440	(B,167,36)	RS1/16SS221J		R 4801	(A,103,32)	RS1/16SS103J	
R 4441	(B,167,34)	RS1/16SS221J		R 4802	(A,111,31)	RS1/16SS10R0D	
R 4442	(B,168,36)	RS1/16SS221J		R 4803	(A,110,28)	RS1/16SS220J	
R 4443	(B,168,34)	RS1/16SS221J		R 4804	(A,110,30)	RS1/16SS220J	
R 4444	(B,169,35)	RS1/16SS221J		R 4805	(A,109,28)	RS1/16SS220J	
R 4445	(B,169,34)	RS1/16SS221J		R 4806	(A,108,28)	RS1/16SS220J	
R 4446	(B,172,46)	RS1/16SS221J		R 4807	(A,107,28)	RS1/16SS471J	
R 4447	(B,173,48)	RS1/16SS220J		R 4808	(A,106,28)	RS1/16SS471J	
R 4448	(A,163,32)	RS1/16SS221J		R 4809	(A,102,28)	RS1/16SS471J	
R 4501	(B,116,65)	RS1/16SS220J		R 4810	(A,102,29)	RS1/16SS102J	
R 4502	(B,118,62)	RS1/16SS220J		R 4811	(A,111,28)	RS1/16SS220J	C
R 4503	(B,118,66)	RS1/16SS220J		R 4815	(A,119,32)	RS1/16SS0R0J	
R 4504	(B,119,62)	RS1/16SS220J		R 4816	(A,119,33)	RS1/16SS0R0J	
R 4505	(B,119,66)	RS1/16SS220J		R 4817	(A,115,38)	RS1/16SS473J	
R 4506	(B,120,62)	RS1/16SS471J		R 4818	(A,116,38)	RS1/16SS473J	
R 4507	(B,129,57)	RS1/16SS221J		R 4819	(A,118,38)	RS1/16SS473J	
R 4508	(B,131,58)	RS1/16SS221J		R 4820	(A,113,28)	RS1/16SS104J	
R 4509	(B,129,59)	RS1/16SS221J		R 4821	(A,113,27)	RS1/16SS101J	
R 4510	(B,131,59)	RS1/16SS221J		R 4822	(A,114,27)	RS1/16SS220J	
R 4511	(B,125,61)	RS1/16SS221J		R 4823	(A,115,27)	RS1/16SS220J	
R 4512	(B,126,61)	RS1/16SS221J		R 4824	(A,116,27)	RS1/16SS220J	
R 4513	(B,127,61)	RS1/16SS221J		R 4825	(A,117,27)	RS1/16SS220J	D
R 4514	(B,128,61)	RS1/16SS221J		R 4851	(B,61,85)	RS1/10SR562J	
R 4515	(B,129,61)	RS1/16SS221J		R 4852	(B,64,86)	RS1/10SR562J	
R 4516	(B,121,63)	RS1/16SS220J		R 4853	(B,58,82)	RS1/16SS1502D	
R 4517	(A,131,58)	RS1/16SS221J		R 4854	(B,66,82)	RS1/16SS472J	
R 4518	(A,119,55)	RS1/16SS221J		R 4855	(B,60,81)	RS1/16SS472J	
R 4519	(A,129,58)	RS1/16SS221J		R 4857	(B,58,81)	RS1/16SS1202D	
R 4520	(A,121,55)	RS1/16SS221J					
R 4521	(A,119,53)	RS1/16SS221J					
R 4522	(A,121,54)	RS1/16SS221J					
R 4523	(A,129,57)	RS1/16SS221J					
R 4524	(A,129,56)	RS1/16SS221J					
R 4525	(A,129,60)	RS1/16SS221J					
R 4526	(A,119,52)	RS1/16SS221J					
R 4527	(A,126,58)	RS1/16SS221J					
R 4528	(A,121,53)	RS1/16SS221J					
R 4529	(A,126,60)	RS1/16SS221J					
R 4530	(A,119,51)	RS1/16SS221J					
R 4531	(A,121,51)	RS1/16SS221J					
R 4532	(A,119,50)	RS1/16SS220J					
R 4533	(B,130,49)	RS1/16SS220J					
R 4534	(A,124,59)	RS1/16SS102J					
R 4535	(A,116,54)	RS1/16SS0R0J					
R 4536	(A,120,58)	RS1/16SS0R0J					
R 4539	(B,121,43)	RS1/16SS0R0J					

CAPACITORS

C 1002	(A,65,29)	CKSSYB104K16	E
C 1003	(B,69,32)	CKSSYB104K16	
C 1004	(A,65,28)	CKSSYB104K16	
C 1005	(B,68,33)	CCSSCH101J50	
C 1007	(A,74,23) 4.7 uF	CCG1201	
C 1008	(A,77,50)	CKSSYB104K16	
C 1009	(A,78,24)	CKSSYB103K16	
C 1011	(A,82,24)	CKSSYB104K16	
C 1013	(A,84,53)	CCSSCH470J50	
C 1015	(A,89,50)	CKSSYB104K16	
C 1016	(A,91,30)	CKSSYB104K16	
C 1018	(A,94,23) 100 uF/16 V	CCH1962	F
C 1019	(A,91,39)	CKSSYB104K16	
C 1021	(A,95,30)	CKSSYB102K50	
C 1023	(B,89,20)	CKSRYB105K16	

	1		2		3		4	
	<u>Circuit Symbol and No.</u>		<u>Part No.</u>		<u>Circuit Symbol and No.</u>		<u>Part No.</u>	
A	C 1202	(B,89,64) (US,CA)	CKSSYB472K25	C 1464	(B,76,123)	CKSRYB223K50		
	C 1203	(B,92,56)	CKSSYB472K25	C 1465	(B,77,123)	CKSRYB223K50		
	C 1204	(B,85,45) 4.7 uF	CCG1201	C 1466	(A,65,126)	CCSQCH471J50		
	C 1205	(B,82,46)	CKSSYB103K16	C 1467	(A,67,126)	CCSQCH471J50		
	C 1206	(B,80,46)	CKSSYB104K16	C 1468	(A,69,126)	CCSQCH471J50		
B	C 1209	(B,68,62)	CCSSCH101J50	C 1469	(A,72,126)	CCSQCH471J50		
	C 1210	(B,69,59)	CCSSCH101J50	C 1470	(B,83,138)	CKSRYB223K50		
	C 1301	(A,60,35)	CKSRYB103K50	C 1471	(B,83,137)	CKSRYB223K50		
	C 1311	(B,92,65)	CKSRYB104K50	C 1481	(B,119,104)	CKSRYB223K50		
	C 1321	(A,89,18)	CKSRYB224K16	C 1482	(B,123,104)	CKSRYB473K50		
C	C 1331	(A,59,74)	CKSRYB223K50	C 1483	(B,124,101)	CKSRYB223K50		
	C 1341	(B,75,37)	CKSRYB103K50	C 1484	(B,126,96)	CKSRYB223K50		
	C 1361	(B,49,22)	CKSRYB105K10	C 1485	(B,116,99)	CKSRYB474K16		
	C 1362	(B,50,22)	CKSRYB105K10	C 1486	(B,118,96)	CKSRYB474K16		
	C 1363	(B,50,25)	CKSRYB105K16	C 1487	(B,119,98)	CKSRYB474K16		
D	C 1364	(B,49,25)	CKSRYB105K16	C 1488	(B,44,141)	CKSRYB474K16		
	C 1365	(B,36,20)	CKSRYB103K50	C 1489	(B,119,101)	CKSRYB223K50		
	C 1401	(A,152,125)	CKSQYB222K50	C 1490	(B,121,105)	CKSRYB473K50		
	C 1402	(A,119,112)	CKSRYB681K50	C 1491	(B,121,102)	CKSRYB223K50		
	C 1403	(A,116,112)	CKSRYB681K50	C 1492	(B,125,94)	CKSRYB223K50		
E	C 1404	(B,140,122)	CKSRYB474K16	C 1493	(B,115,95)	CKSRYB474K16		
	C 1405	(B,140,119)	CKSRYB474K16	C 1494	(B,118,95)	CKSRYB474K16		
	C 1406	(B,150,142)	CKSQYB472K50	C 1495	(B,121,98)	CKSRYB474K16		
	C 1407	(B,149,142)	CKSQYB472K50	C 1496	(B,44,144)	CKSRYB474K16		
	C 1408	(A,156,125)	CKSQYB472K50	C 1497	(B,134,95) 1 uF	CCG1255		
F	C 1409	(A,154,125)	CKSQYB472K50	C 1501	(B,83,111)	CKSRYB105K10		
	C 1410	(B,145,142)	CKSQYB222K50	C 1601	(B,75,35)	CKSSYB104K10		
	C 1411	(B,147,142)	CKSQYB222K50	C 1851	(A,160,104) 4.7 uF	CCG1222		
	C 1412	(B,143,142)	CCSQCH101J50	C 1901	(B,54,111)	CKSRYB104K16		
	C 1413	(A,150,125)	CCSQCH101J50	C 1903	(B,59,116)	CCSSCH101J50		
G	C 1414	(B,141,141)	CCSRCH102J50	C 1904	(B,59,113) 10 uF	DCH1201		
	C 1415	(B,141,142)	CCSRCH102J50	C 1905	(B,62,113)	CKSSYB104K16		
	C 1416	(B,139,141)	CKSRYB474K16	C 1907	(A,67,109)	CCSSCH100D50		
	C 1417	(B,139,142)	CKSRYB474K16	C 1908	(A,61,109)	CCSSCH100D50		
	C 1418	(A,154,93)	CKSQYB471K50	C 1909	(B,65,105)	CCSSCH101J50		
H	C 1419	(A,154,95)	CKSQYB471K50	C 1910	(B,65,106)	CKSSYB103K16		
	C 1431	(A,35,126)	CKSRYB102K50	C 1911	(A,50,118)	CKSSYB104K16		
	C 1432	(A,36,126)	CKSRYB102K50	C 1912	(A,50,117)	CKSSYB104K16		
	C 1433	(B,47,141)	CKSQYB102K50	C 1913	(A,51,121)	CKSRYB105K10		
	C 1434	(B,50,144)	CKSQYB221K50	C 1914	(B,61,107)	CKSSYB104K16		
I	C 1435	(B,53,146)	CKSQYB221K50	C 1915	(B,62,106) 10 uF	DCH1201		
	C 1436	(B,58,146)	CKSQYB221K50	C 1916	(B,47,121)	CKSSYB103K16		
	C 1439	(B,43,123)	CKSQYB102K50	C 1917	(B,65,99)	CKSSYB223K16		
	C 1440	(B,33,145)	CKSRYB102K50	C 1918	(B,76,111) 10 uF	DCH1201		
	C 1441	(B,31,145)	CKSRYB102K50	C 1919	(B,64,97)	CKSSYB223K16		
J	C 1442	(A,38,126)	CCSQCH101J50	C 1920	(B,64,98)	CKSSYB104K16		
	C 1443	(A,40,126)	CCSQCH101J50	C 1921	(B,63,98)	CKSSYB104K16		
	C 1444	(B,47,122)	CKSRYB102K50	C 1922	(B,79,111) 10 uF	DCH1201		
	C 1445	(A,26,126)	CKSRYB474K16	C 2001	(B,26,48)	CCSQCH392J50		
	C 1446	(A,28,126)	CKSRYB474K16	C 2002	(B,26,51)	CCSQCH392J50		
K	C 1448	(A,30,126)	CKSRYB223K50	C 2003	(A,14,33)	CEVW101M16		
	C 1449	(A,29,126)	CKSRYB223K50	C 2004	(A,27,115)	CEVW101M16		
	C 1450	(B,26,121)	CKSRYB102K50	C 2005	(A,22,32) Capacitor(US,CA)	CEAT102M6R3(P45)		
	C 1451	(B,26,119)	CKSRYB102K50	C 2006	(A,8,36)	CKSSYB103K16		
	C 1453	(B,37,141)	CKSQYB104K50	C 2007	(A,32,113)	CKSSYB103K16		
L	C 1454	(B,41,141)	CKSQYB104K50	C 2008	(A,18,29) (US,CA)	CKSSYB103K16		
	C 1456	(B,45,123)	CKSQYB102K50	C 2009	(A,17,18)	CKSSYB103K16		
	C 1461	(A,75,126)	CKSQYB104K50	C 2010	(A,22,16) 470 uF/16 V	CCH1680		
	C 1462	(B,83,134)	CCSQCH101J50	C 2011	(B,23,96)	CKSRYB102K50		
	C 1463	(B,81,134)	CCSQCH101J50	C 2012	(A,14,17)	CKSRYB103K50		

5		6	7		8
<u>Circuit Symbol and No.</u>		<u>Part No.</u>	<u>Circuit Symbol and No.</u>		<u>Part No.</u>
C 2013	(B,23,94)	CKSSYB222K50	C 2395	(B,98,61) (US,CA)	CKSSYB103K16
C 2014	(B,23,91)	CKSSYB222K50	C 2401	(B,97,42)	CKSRYB105K16
C 2015	(B,23,88)	CKSSYB102K50	C 2402	(B,97,48)	CKSRYB105K16
C 2016	(B,23,87)	CCSSCH471J50	C 2403	(B,101,40)	CCSSCH470J50
C 2017	(B,23,85)	CKSSYB152K50	C 2404	(B,100,49)	CCSSCH470J50
			C 2405	(B,103,45)	CKSSYB104K16
C 2018	(B,23,79) (US,CA)	CKSSYB222K50	C 2406	(B,99,39)	CKSSYB104K16
C 2019	(B,31,69) (US,CA)	CKSSYB222K50	C 2411	(B,65,38)	CKSRYB105K16
C 2020	(B,23,63)	CCSSCH331J50	C 2412	(B,68,38)	CKSRYB105K16
C 2021	(B,23,50) (US,CA)	CKSSYB222K50	C 2413	(B,60,40)	CCSSCH470J50
C 2022	(B,23,54) (US,CA)	CKSSYB222K50	C 2414	(B,69,40)	CCSSCH470J50
C 2023	(B,26,55) (US,CA)	CKSSYB222K50	C 2415	(B,70,41)	CKSSYB104K16
C 2024	(B,26,57) (US,CA)	CKSSYB222K50	C 2416	(B,65,46)	CKSSYB104K16
C 2101	(A,26,123)	CKSQYB103K50	C 2421	(B,73,89)	CCSSCH220J50
C 2102	(A,26,119)	CKSSYB103K16	C 2422	(B,81,86)	CCSSCH220J50
C 2103	(A,25,119)	CCSSCH101J50	C 2423	(B,82,94)	CCSSCH220J50
C 2106	(B,17,113)	CKSSYB103K16	C 2424	(B,73,93)	CCSSCH220J50
C 2201	(A,102,17)	CKSSYB102K50	C 2425	(B,83,97) 4.7 uF	CCG1323
C 2202	(B,121,15) 10 uF	CCG1324	C 2426	(B,84,91) 4.7 uF	CCG1323
C 2203	(B,121,18) 10 uF	CCG1324	C 2427	(B,72,96) 4.7 uF	CCG1323
C 2204	(A,101,20) 22 uF	CCG1254	C 2428	(B,68,94) 4.7 uF	CCG1323
C 2205	(B,104,6)	CCSSCH470J50	C 2433	(B,77,85)	CKSRYB103K50
C 2206	(A,101,18) 22 uF	CCG1254	C 2434	(B,70,86)	CKSRYB104K50
C 2207	(B,112,11)	CKSSYB102K50	C 2435	(B,75,108) 4.7 uF	CCG1323
C 2208	(B,113,8)	CKSSYB102K50	C 2436	(B,71,108) 4.7 uF	CCG1323
C 2209	(B,115,13)	CKSSYB102K50	C 2437	(B,84,108) 4.7 uF	CCG1323
C 2210	(B,116,16)	CKSSYB102K50	C 2438	(B,79,108) 4.7 uF	CCG1323
C 2211	(B,110,11)	CKSRYB105K16	C 2439	(A,71,108)	CKSQYB472K50
C 2303	(B,33,53) (QG)	CKSRYB105K16	C 2440	(A,84,108)	CKSQYB472K50
C 2304	(B,33,48) (QG)	CKSRYB105K16	C 2441	(A,75,108)	CKSQYB472K50
C 2305	(B,37,52) (QG)	CCSSCH680J50	C 2442	(A,79,108)	CKSQYB472K50
C 2306	(B,37,49) (QG)	CCSSCH680J50	C 2501	(B,105,55) (US,CA)	CKSSYB104K10
C 2307	(B,38,46) (QG)	CKSSYB104K16	C 2502	(A,107,55) (US,CA)	CKSSYB103K16
C 2308	(B,40,55) (QG)	CKSSYB104K16	C 2503	(B,103,56) (US,CA)	CCSSCH101J50
C 2321	(A,89,119)	CKSRYB105K16	C 2504	(B,108,57) (US,CA)	CKSSYB104K10
C 2322	(A,85,119)	CKSRYB105K16	C 2505	(B,108,59) (US,CA)	CKSSYB102K50
C 2323	(A,80,119)	CKSRYB105K16	C 2506	(B,108,60) (US,CA)	CKSSYB104K10
C 2324	(A,83,119)	CKSRYB105K16	C 2507	(A,96,51) 10 uF(US,CA)	DCH1201
C 2325	(A,88,114)	CCSSCH470J50	C 2508	(A,100,60) (US,CA)	CKSRYB104K16
C 2326	(A,83,114)	CCSSCH470J50	C 2509	(A,98,60) 10 uF(US,CA)	DCH1201
C 2327	(A,81,115)	CCSSCH470J50	C 2521	(B,107,41)	CKSSYB104K10
C 2328	(A,83,109)	CKSSYB104K16	C 2522	(A,107,45)	CKSSYB102K50
C 2329	(A,85,115)	CCSSCH470J50	C 2523	(B,103,42)	CCSSCH101J50
C 2330	(A,86,114)	CKSSYB104K16	C 2524	(B,108,44)	CKSSYB104K10
C 2352	(A,77,118)	CKSQYB225K10	C 2525	(B,105,46)	CKSSYB102K50
C 2353	(A,74,117)	CKSQYB225K10	C 2526	(B,105,47)	CKSSYB104K10
C 2354	(A,72,117)	CKSQYB225K10	C 2527	(A,100,49) 10 uF	DCH1201
C 2355	(A,70,117)	CKSQYB225K10	C 2528	(A,97,42)	CKSRYB104K16
C 2356	(A,79,116)	CCSSCH101J50	C 2529	(A,99,40) 10 uF	DCH1201
C 2357	(A,68,114)	CCSSCH101J50	C 2541	(B,60,29)	CKSSYB103K16
C 2358	(A,76,117)	CCSSCH101J50	C 2542	(B,68,36) 10 uF	DCH1201
C 2359	(A,72,114)	CCSSCH101J50	C 2543	(B,64,30)	CKSRYB104K16
C 2360	(A,75,109)	CKSSYB104K16	C 2544	(B,64,28) 10 uF	DCH1201
C 2362	(A,76,115)	CKSSYB104K16	C 2545	(B,53,32)	CKSSYB104K10
C 2381	(B,103,34) 2.2 uF	CCG1218	C 2546	(B,51,32)	CCSSCH101J50
C 2382	(B,108,36)	CCSSCH101J50	C 2547	(B,45,32)	CKSSYB104K10
C 2383	(B,110,35)	CKSSYB104K16	C 2548	(B,46,30)	CKSSYB102K50
C 2391	(B,97,54) (US,CA)	CKSRYB105K16	C 2549	(B,45,30)	CKSSYB104K10
C 2392	(B,100,62) (US,CA)	CCSSCH470J50	C 2601	(A,26,24)	CKSSYB104K16
C 2393	(B,101,53) (US,CA)	CCSSCH470J50	C 2602	(A,33,14)	CKSSYB102K50
C 2394	(B,102,62) (US,CA)	CKSSYB104K16			

	1	2	3	4
	<u>Circuit Symbol and No.</u>	<u>Part No.</u>	<u>Circuit Symbol and No.</u>	<u>Part No.</u>
	C 2603 (B,38,17)	CKSSYB102K50	C 3043 (B,134,105)	CKSRYB105K16
	C 2604 (B,35,16)	CKSRYB105K10	C 3045 (B,136,106)	CKSRYB105K16
A	C 2605 (A,36,15)	CKSSYB102K50	C 3101 (A,110,107) 1 000 uF/16 V	CCH1428(P35)
	C 2606 (B,38,13)	CKSRYB105K10	C 3102 (B,99,102)	CCG1342
	C 2607 (B,41,12)	CKSSYB102K50	C 3103 (B,101,102)	CCG1342
	C 2701 (A,72,105) 10 uF	CCG1236	C 3104 (A,96,94) 4.7 uF	CCG1222
	C 2702 (A,70,103) 0.1 uF	CCG1321	C 3105 (B,91,108)	CKSRYB105K16
	C 2703 (A,78,105) 10 uF	CCG1236	C 3106 (B,91,109)	CKSSYB105K6R3
	C 2704 (A,79,103) 0.1 uF	CCG1321	C 3107 (B,98,104)	CCSSCH221J50
	C 2705 (A,80,92) 4.7 uF(QG)	CCG1201	C 3108 (A,92,93)	CKSSYB104K16
	C 2706 (A,80,90) (US,CA)	CKSQYB225K16	C 3109 (A,97,102)	CKSRYB105K16
	C 2707 (A,83,94) (US,CA)	CKSQYB225K16		
	C 2708 (A,84,98)	CKSQYB225K16	C 3110 (A,94,85) 22 uF	CCG1254
B	C 2709 (B,62,78) (US,CA)	CKSRYB105K16	C 3111 (B,95,84) 47 uF	CCG1256
	C 2710 (A,80,85)	CKSQYB225K16	C 3112 (A,98,80) 0.22 uF	CCG1313
	C 2711 (A,85,87)	CKSQYB225K16	C 3113 (A,89,80) 0.22 uF	CCG1313
	C 2712 (A,80,88)	CKSQYB225K16	C 3114 (A,93,77)	CKSRYB105K16
	C 2713 (A,84,89) 2.2 uF	CCG1322	C 3115 (A,91,75) 22 uF	CCG1254
	C 2714 (A,83,96) (US,CA)	CKSQYB225K16	C 3116 (A,94,73)	CKSSYB472K50
	C 2716 (A,80,95) 10 uF	CCG1324	C 3117 (A,117,139) 0.1 uF/5.5 V	CCL1054
	C 2717 (A,80,100)	CKSQYB225K16	C 3161 (A,80,81)	CKSSYB103K16
	C 2718 (A,85,103) 10 uF	DCH1201	C 3171 (B,93,78)	CKSSYB102K50
	C 2719 (A,83,106) 10 uF	DCH1201	C 3172 (B,100,105)	CKSSYB103K16
	C 2720 (A,60,94) 4.7 uF(QG)	CCG1201	C 3173 (B,90,70)	CKSSYB103K16
C	C 2721 (A,64,92) (US,CA)	CKSQYB225K16	C 3201 (A,150,85) 10 uF	CCG1236
	C 2722 (A,64,94) (US,CA)	CKSQYB225K16	C 3205 (B,139,69)	CCSSCH331J50
	C 2723 (B,62,80) (US,CA)	CKSRYB105K16	C 3206 (B,136,71)	CKSSYB223K16
	C 2724 (A,64,86)	CKSQYB225K16	C 3207 (B,147,71)	CKSSYB223K16
	C 2725 (A,64,88)	CKSQYB225K16	C 3210 (B,135,71)	CCSQCH472J50
	C 2726 (A,64,90)	CKSQYB225K16	C 3211 (B,150,72)	CCSQCH472J50
	C 2727 (A,60,89) 2.2 uF	CCG1322	C 3212 (B,132,74)	CKSQYB105K25
	C 2728 (A,64,96) (US,CA)	CKSQYB225K16	C 3213 (B,131,71)	CCSSCH181J50
	C 2730 (B,68,90) 10 uF	CCG1324	C 3214 (B,153,75)	CCSSCH181J50
	C 2731 (A,65,99)	CKSQYB225K16	C 3215 (B,151,78) 4.7 uF	CCG1201
	C 2732 (A,59,100)	CKSQYB225K16	C 3216 (B,133,78) 4.7 uF	CCG1201
D	C 2733 (A,83,101) 0.1 uF	CCG1321	C 3217 (B,144,82)	CKSSYB102K50
	C 2734 (A,83,104) 0.1 uF	CCG1321	C 3218 (B,141,82)	CKSSYB102K50
	C 2736 (B,67,79) (US,CA)	CKSSYB104K16	C 3219 (A,145,79)	CKSQYB105K25
	C 2737 (B,63,73) (US,CA)	CKSSYB104K16	C 3220 (B,156,79)	CKSSYB104K16
	C 2738 (B,67,71) (US,CA)	CCSSCH470J50	C 3221 (B,129,79)	CKSSYB104K16
	C 2739 (B,68,74) (US,CA)	CCSSCH470J50	C 3222 (A,150,79)	CKSRYB102K50
	C 2740 (B,71,76) 4.7 uF(US,CA)	CCG1201	C 3223 (A,138,78)	CKSRYB102K50
	C 2741 (B,69,76) 4.7 uF(US,CA)	CCG1201	C 3224 (A,138,79)	CKSRYB104K50
	C 2801 (B,42,93) (QG)	CKSSYB104K16	C 3225 (A,150,80)	CKSRYB104K50
	C 2802 (B,36,93) (QG)	CKSSYB103K25	C 3228 (A,145,75) 47 uF	CCG1256
	C 2803 (B,29,98) (QG)	CKSSYB222K50	C 3229 (A,139,74) 47 uF	CCG1251
E	C 2804 (B,25,88) (QG)	CKSRYB105K16	C 3230 (A,145,72) 47 uF	CCG1256
	C 2805 (B,33,105) (QG)	CKSSYB222K50	C 3231 (A,139,72) 47 uF	CCG1251
	C 2806 (B,31,105) (QG)	CKSSYB222K50	C 3232 (A,145,68)	CKSRYB102K50
	C 2807 (B,33,106) (QG)	CKSSYB103K25	C 3233 (A,138,68)	CKSRYB102K50
	C 2808 (B,31,106) (QG)	CKSSYB103K25	C 3234 (A,144,68)	CKSRYB104K50
	C 3001 (A,98,117) 4 700 uF/16 V	CCH2004(P35)	C 3235 (A,139,68)	CKSRYB104K50
	C 3003 (A,132,99)	CCSRCH221J50	C 3236 (A,112,72)	CKSSYB102K50
	C 3004 (A,133,97)	CCSRCH221J50	C 3237 (A,111,72)	CKSSYB102K50
	C 3005 (B,101,109)	CCSRCH221J50	C 3238 (A,120,72)	CKSSYB102K50
	C 3006 (B,101,106)	CCSRCH221J50	C 3239 (A,149,87)	CKSRYB104K50
	C 3012 (A,99,102)	CKSSYB104K16	C 3251 (A,116,122) 4 700 uF/16 V	CCH2004(P35)
F	C 3013 (A,97,107)	CCSSCH101J50	C 3252 (A,121,94) 10 uF	CCG1236
	C 3021 (B,98,70)	CKSRYB105K10	C 3256 (B,110,86)	CCSQCH103J50
	C 3041 (B,136,115)	CKSSYB102K50	C 3258 (B,112,89)	CCSSCH102J50
			C 3259 (A,102,91) 22 uF	CCG1254

5		6		7		8	
<u>Circuit Symbol and No.</u>		<u>Part No.</u>		<u>Circuit Symbol and No.</u>		<u>Part No.</u>	
C 3260	(A,102,94) 47 uF	CCG1229		C 4022	(B,145,30)	CKSSYB102K50	
C 3263	(B,109,85)	CKSSYB104K16		C 4023	(B,147,27)	CKSSYB104K10	
C 3301	(A,102,73) 47 uF/16 V	DCH1242		C 4024	(B,147,28)	CKSSYB104K10	A
C 3302	(A,108,69)	CKSSYB104K16		C 4025	(B,147,29)	CKSSYB104K10	
C 3303	(A,108,67)	CKSSYB104K16		C 4026	(B,147,30)	CKSSYB104K10	
C 3304	(A,105,63) 47 uF/16 V	DCH1242		C 4027	(B,134,31)	CKSSYB102K50	
C 3306	(A,63,72)	CKSSYB104K16		C 4028	(B,135,31)	CKSSYB102K50	
C 3307	(A,62,77)	CKSSYB104K16		C 4029	(B,135,32)	CKSSYB102K50	
C 3308	(A,75,75)	CKSSYB104K16		C 4030	(B,136,32)	CKSSYB102K50	
C 3309	(A,66,76) 22 uF	CCG1254		C 4031	(B,135,34)	CKSSYB104K10	
C 3310	(A,71,72) 47 uF/16 V	DCH1242		C 4032	(B,136,34)	CKSSYB104K10	
C 3311	(A,64,77)	CKSSYB104K16		C 4033	(B,142,38)	CKSSYB104K10	
C 3312	(A,86,76) 47 uF	CCG1229		C 4034	(B,142,39)	CKSSYB104K10	
C 3313	(A,82,75)	CKSSYB104K16		C 4035	(B,147,47)	CKSSYB102K50	B
C 3321	(A,66,65) 10 uF	DCH1165		C 4036	(B,147,46)	CKSSYB102K50	
C 3323	(A,60,67) 10 uF	DCH1165		C 4037	(B,147,45)	CKSSYB102K50	
C 3341	(A,113,57) 10 uF	DCH1201		C 4038	(B,144,37)	CKSSYB102K50	
C 3342	(A,149,58) 10 uF	DCH1201		C 4039	(B,145,44)	CKSSYB104K10	
C 3343	(A,118,62) 10 uF	DCH1201		C 4040	(B,145,45)	CKSSYB104K10	
C 3344	(A,160,56) 10 uF	DCH1201		C 4041	(B,145,46)	CKSSYB104K10	
C 3361	(B,161,60) 10 uF	DCH1201		C 4042	(B,145,47)	CKSSYB104K10	
C 3362	(B,165,73) 4.7 uF	CCG1201		C 4043	(B,152,42)	CKSSYB102K50	
C 3381	(B,143,102)	CKSSYB104K10		C 4044	(B,151,42)	CKSSYB102K50	
C 3401	(B,45,99)	CKSRYB104K50		C 4045	(B,150,42)	CKSSYB102K50	
C 3402	(B,42,104) 10 uF	DCH1201		C 4046	(B,149,42)	CKSSYB102K50	C
C 3403	(B,38,104)	CKSRYB104K50		C 4047	(B,152,40)	CKSSYB102K50	
C 3441	(B,100,19) 10 uF	DCH1165		C 4048	(B,151,40)	CKSSYB104K10	
C 3443	(A,105,24) 10 uF	DCH1165		C 4049	(B,150,40)	CKSSYB104K10	
C 3445	(A,104,23)	CCSSCH221J50		C 4050	(B,149,40)	CKSSYB104K10	
C 3461	(B,62,15) 10 uF	DCH1201		C 4051	(B,144,39)	CKSSYB104K10	
C 3462	(B,62,24) 4.7 uF	CCG1201		C 4052	(B,144,38)	CKSSYB104K10	
C 3463	(B,65,15)	CKSRYB105K16		C 4053	(B,138,47)	CKSSYB102K50	
C 3481	(B,23,16) 10 uF	DCH1201		C 4054	(B,138,46)	CKSSYB102K50	
C 3482	(B,32,17) 10 uF	DCH1201		C 4055	(B,138,45)	CKSSYB102K50	
C 3501	(A,82,64) 1 uF	CCG1255		C 4056	(B,138,44)	CKSSYB102K50	
C 3502	(A,71,63) 10 uF	CCG1236		C 4057	(B,140,47)	CKSSYB104K10	D
C 3553	(B,105,99)	CKSSYB104K10		C 4058	(B,140,46)	CKSSYB104K10	
C 3554	(B,105,94)	CKSSYB104K10		C 4059	(B,140,45)	CKSSYB104K10	
C 3555	(B,113,92)	CKSSYB104K10		C 4060	(B,140,44)	CKSSYB104K10	
C 4001	(B,138,27)	CKSSYB102K50		C 4061	(B,133,42)	CKSSYB102K50	
C 4002	(B,138,28)	CKSSYB102K50		C 4062	(B,134,42)	CKSSYB102K50	
C 4003	(B,138,29)	CKSSYB102K50		C 4063	(B,135,42)	CKSSYB102K50	
C 4004	(B,144,36)	CKSSYB102K50		C 4064	(B,136,42)	CKSSYB102K50	
C 4005	(B,140,27)	CKSSYB102K50		C 4065	(B,133,40)	CKSSYB104K10	
C 4006	(B,140,28)	CKSSYB104K10		C 4066	(B,134,40)	CKSSYB104K10	
C 4007	(B,140,29)	CKSSYB104K10		C 4067	(B,135,40)	CKSSYB104K10	
C 4008	(B,140,30)	CKSSYB104K10		C 4068	(B,136,40)	CKSSYB104K10	
C 4009	(B,142,36)	CKSSYB104K10		C 4077	(B,157,45)	CKSSYB104K10	
C 4010	(B,142,37)	CKSSYB104K10		C 4078	(A,169,32) 10 uF	DCH1201	
C 4011	(B,152,32)	CKSSYB102K50		C 4079	(B,133,35)	CKSSYB104K10	
C 4012	(B,151,32)	CKSSYB102K50		C 4080	(B,129,34) 10 uF	DCH1201	
C 4013	(B,150,32)	CKSSYB102K50		C 4081	(A,125,32)	CKSSYB103K16	
C 4014	(B,149,32)	CKSSYB102K50		C 4082	(A,128,35)	CCSSCH8R0D50	
C 4015	(B,152,34)	CKSSYB104K10		C 4083	(A,128,36)	CCSSCH8R0D50	
C 4016	(B,151,34)	CKSSYB104K10		C 4121	(A,142,23)	CKSSYB471K50	
C 4017	(B,150,34)	CKSSYB104K10		C 4301	(B,152,18)	CKSSYB104K10	
C 4018	(B,149,34)	CKSSYB104K10		C 4302	(B,156,19)	CKSSYB104K10	F
C 4019	(B,145,27)	CKSSYB102K50		C 4303	(A,151,6)	CKSSYB104K10	
C 4020	(B,145,28)	CKSSYB102K50		C 4304	(A,155,6)	CKSSYB104K10	
C 4021	(B,145,29)	CKSSYB102K50		C 4305	(B,163,8)	CKSSYB104K10	

1

2

3

4

Circuit Symbol and No.Part No.Circuit Symbol and No.Part No.**Unit Name : Sub Unit****MISCELLANEOUS**

C 4306	(B,139,7)	CKSSYB104K10
C 4307	(B,163,7)	CKSSYB104K10
C 4308	(B,151,21) 10 uF	DCH1201
C 4309	(B,152,20)	CKSSYB104K10
C 4401	(B,169,61)	CKSSYB103K16
C 4402	(B,171,37)	CKSSYB102K50
C 4403	(B,164,37)	CKSSYB104K10
C 4404	(B,171,36)	CKSSYB104K10
C 4405	(A,166,65) 10 uF	DCH1201
C 4501	(B,122,61)	CKSSYB104K10
C 4502	(B,123,61)	CKSSYB104K10
C 4503	(B,116,60) 10 uF	DCH1201
C 4504	(A,111,55) 10 uF	DCH1201
C 4505	(B,114,57)	CKSSYB104K10
C 4506	(B,131,56)	CKSSYB104K10
C 4507	(B,131,54)	CKSSYB104K10
C 4508	(B,113,54)	CKSSYB104K10
C 4509	(B,130,51)	CKSSYB104K10
C 4510	(A,123,58)	CKSSYB103K16
C 4511	(A,118,58)	CKSSYB103K16
C 4512	(B,131,47)	CKSSYB104K10
C 4513	(B,113,52)	CKSSYB104K10
C 4514	(B,113,48)	CKSSYB104K10
C 4515	(B,118,37) 10 uF	DCH1201
C 4516	(B,116,37) 10 uF	DCH1201
C 4517	(B,113,45)	CKSSYB105K10
C 4518	(B,117,43)	CKSSYB104K10
C 4519	(B,115,44) 10 uF	DCH1201
C 4520	(B,123,42)	CKSSYB104K10
C 4521	(B,126,40) 10 uF	DCH1201
C 4522	(B,129,45)	CKSSYB105K10
C 4601	(A,83,128) 2.2 uF	CCG1218
C 4602	(A,88,128)	CKSSYB104K16
C 4604	(A,84,132) 47 uF	CCG1256
C 4651	(A,109,139)	CKSSYB223K50
C 4652	(A,111,139)	CKSSYB223K50
C 4701	(A,171,54)	CKSSYB104K10
C 4702	(A,171,53)	CKSSYB103K16
C 4801	(A,111,35) 10 uF	DCH1201
C 4802	(A,109,36)	CKSSYB104K10
C 4803	(A,105,36)	CKSSYB105K10
C 4804	(A,103,36)	CKSSYB225K16
C 4805	(A,104,35)	CKSSYB104K10
C 4806	(A,102,34) 10 uF	DCH1201
C 4807	(A,103,33)	CKSSYB104K10
C 4808	(A,102,31)	CKSSYB472K25
C 4809	(A,103,31)	CKSSYB102K50
C 4810	(A,110,31)	CKSSYB104K10
C 4811	(A,113,38) 10 uF	DCH1201
C 4812	(A,113,37)	CKSSYB104K10
C 4851	(B,60,84)	CKSSYB474K16
C 4852	(B,63,84) 10 uF	DCH1201
C 4853	(B,57,70)	CKSSYB105K16
C 4854	(B,58,80)	CCSSCH471J50

B
Unit Number: CWN5812(US)
Unit Number: CWN6027(CA)
Unit Number: CWN6029(QG)

IC 8101	(A,118,46) IC(US,CA)	TC7SH08FUS1
IC 8251	(A,100,73) IC(US,CA)	HA12241FP
IC 8301	(A,73,44) IC(US,CA)	UPC3231GV
IC 8401	(A,107,38) AD Convtr IC(US,CA)	AK5357VT
IC 8451	(A,115,38) IC(US,CA)	AK4388VT
IC 8651	(A,95,22) IC(US,CA)	NJM2740V
IC 9003	(B,29,90) IC	MN103SH13UB
IC 9201	(B,71,110) IC	CXB1457R
IC 9301	(A,22,78) Flash ROM Unit	CWW5023
IC 9401	(A,43,118) IC	NJM2505AF
IC 9451	(A,26,118) IC	NJM2505AF
IC 9651	(A,66,133) IC	BD35632EFJ
IC 9751	(A,12,54) IC(US,CA)	NJM2846DL3-05
IC 9801	(A,88,73) IC(US,CA)	S-1172B25-E6
IC 9851	(A,94,38) IC(US,CA)	S-1172B33-E6
IC 9901	(A,86,38) IC(US,CA)	S-1172B11-E6
IC 9902	(A,79,38) IC(US,CA)	S-1172B22-E6
IC 9951	(A,64,77) IC	S-1172B33-E6
IC 9952	(A,71,76) IC	S-1155B12-U5
Q 8302	(A,69,39) Transistor(US,CA)	2SC4081
Q 8303	(A,69,46) Transistor(US,CA)	2SC4081
Q 8304	(A,58,39) Transistor(US,CA)	2SC4081
Q 8305	(A,55,46) Transistor(US,CA)	2SC4081
Q 8306	(A,55,39) Transistor(US,CA)	2SC4081
Q 8307	(A,66,34) Chip Transistor(US,CA)	DTC114EUA
Q 8308	(A,63,34) Chip Transistor(US,CA)	DTC114EUA
Q 8551	(B,46,118) Transistor	2SC4081
Q 8651	(A,95,27) Chip Transistor(US,CA)	RN1904
Q 9001	(A,54,111) Chip Transistor	DTC114YUA
Q 9601	(A,37,18) Chip Transistor(US,CA)	DTC114EUA
Q 9602	(A,34,22) Transistor(US,CA)	2SA1576A
Q 9701	(A,59,30) Chip Transistor(US,CA)	DTC114EUA
Q 9702	(A,64,30) Chip Transistor(US,CA)	2SB1689
D 8501	(A,54,120) Diode	RSB18V
D 8504	(B,50,119) Diode	1SS352
D 9653	(A,69,126) Diode	RR264M-400
D 9751	(A,24,45) Diode(US,CA)	1SR154-400
D 9752	(A,24,52) Diode(US,CA)	1SR154-400
D 9901	(A,75,31) Diode(US,CA)	RB160M-30
D 9902	(A,80,31) Diode(US,CA)	RB160M-30
D 9951	(A,70,83) Diode	1SR154-400
L 8101	(A,120,45) Inductor(US,CA)	CTF1630
L 8201	(A,94,79) Chip Ferrite Bead(US,CA)	ATF1211
L 8202	(A,90,98) Chip Ferrite Bead(US,CA)	ATF1211
L 8203	(A,92,79) Inductor(US,CA)	XTL3010
L 8251	(A,98,78) Inductor(US,CA)	CTF1786
L 8301	(A,67,37) Inductor(US,CA)	CTF1787
L 8302	(A,53,33) Inductor(US,CA)	CTF1787
L 8401	(A,109,30) Inductor(US,CA)	CTF1786
L 8402	(A,107,30) Inductor(US,CA)	CTF1786
L 8451	(A,116,27) Inductor(US,CA)	CTF1786
L 8651	(A,99,26) Inductor(US,CA)	CTF1558
L 9001	(A,49,107) Inductor	XTL3010
L 9002	(B,38,69) Inductor	XTL3010
L 9003	(B,28,111) Inductor	CTF1786
L 9004	(B,27,114) Inductor	XTL3010

1

2

3

4

5		6		7		8	
<u>Circuit Symbol and No.</u>		<u>Part No.</u>		<u>Circuit Symbol and No.</u>		<u>Part No.</u>	
L 9201	(A,100,134) Inductor	CTF1547		R 8457	(A,112,42) (US,CA)	RS1/16SS104J	
L 9202	(B,77,119) Inductor	CTF1547		R 8458	(A,112,40) (US,CA)	RS1/16SS104J	
L 9203	(B,71,120) Inductor	CTF1731		R 8551	(B,46,120)	RS1/10SR221J	
L 9301	(A,26,112) Inductor	CTF1786					
L 9401	(A,37,117) Inductor	CTF1786		R 8552	(B,43,118)	RS1/16SS473J	A
X 9002	(B,38,105) Crystal 33 MHz	CSS1827		R 8553	(A,51,113)	RS1/16SS562J	
F 8301	(A,62,39) Filter(US,CA)	CTF1764		R 8651	(A,91,28) (US,CA)	RS1/16SS6801D	
F 8302	(A,61,46) Filter(US,CA)	CTF1780		R 8652	(A,103,26) (US,CA)	RS1/16SS6801D	
U 8101	(B,86,36) WWR C-BE Unit(US,CA)	CWE2340		R 8657	(A,91,27) (US,CA)	RS1/16SS1002D	
CN8001	(B,21,122) Connector(US,CA)	CKS5749		R 8658	(A,102,26) (US,CA)	RS1/16SS1002D	
CN8201	(B,100,88) Connector(US,CA)	CKS5709		R 8659	(A,87,25) (US,CA)	RS1/16SS1002D	
CN8901	(A,60,9) Connector	CKS6242		R 8660	(A,105,24) (US,CA)	RS1/16SS1002D	
JA8001	(A,21,142) Socket(US,CA)	CKS5316		R 8661	(A,91,21) (US,CA)	RS1/16SS1002D	
JA8501	(A,47,140) Plug	CKM1563		R 8662	(A,99,20) (US,CA)	RS1/16SS1002D	
JA8801	(A,83,141) Connector	CKS6314		R 8663	(A,90,23) (US,CA)	RS1/16SS5601D	B

RESISTORS

R 8101	(A,60,35) (US,CA)	RS1/16SS0R0J		R 8702	(A,108,75) (US,CA)	RS1/16SS0R0J	
R 8102	(A,77,47) (US,CA)	RS1/16SS0R0J		R 8703	(A,119,73) (US,CA)	RS1/16SS0R0J	
R 8103	(A,97,46) (US,CA)	RS1/16SS0R0J		R 8704	(A,108,74) (US,CA)	RS1/16SS0R0J	
R 8104	(A,99,46) (US,CA)	RS1/16SS0R0J		R 8705	(A,118,72) (US,CA)	RS1/16SS0R0J	
R 8105	(A,100,46) (US,CA)	RS1/16SS0R0J		R 8706	(A,106,73) (US,CA)	RS1/16SS0R0J	
R 8106	(A,102,46) (US,CA)	RS1/16SS0R0J		R 8707	(A,117,77) (US,CA)	RS1/16SS182J	
R 8107	(A,96,45) (US,CA)	RS1/10SR0R0J		R 8708	(A,110,77) (US,CA)	RS1/16SS182J	C
R 8108	(A,88,45) (US,CA)	RS1/10SR0R0J		R 8709	(A,119,77) (US,CA)	RS1/16SS273J	
R 8109	(A,117,44) (US,CA)	RS1/16SS330J		R 8710	(A,108,77) (US,CA)	RS1/16SS273J	
R 8201	(A,99,96) (US,CA)	RS1/16SS470J		R 9002	(B,43,72)	RS1/16SS101J	
R 8251	(A,102,80) (US,CA)	RS1/16SS680J		R 9005	(A,38,69)	RS1/16SS0R0J	
R 8252	(A,101,79) (US,CA)	RS1/16SS101J		R 9006	(A,12,72)	RAB4CQ101J	
R 8253	(A,102,79) (US,CA)	RS1/16SS101J		R 9007	(A,13,75)	RAB4CQ101J	
R 8254	(A,96,68) (US,CA)	RS1/16SS101J		R 9008	(B,37,73)	RS1/16SS0R0J	
R 8255	(A,96,66) (US,CA)	RS1/16SS101J		R 9010	(A,31,70)	RAB4CQ101J	
R 8256	(A,96,65) (US,CA)	RS1/16SS101J		R 9011	(A,31,78)	RAB4CQ101J	
R 8306	(A,69,36) (US,CA)	RS1/16SS472J		R 9014	(A,14,86)	RS1/16SS101J	
R 8307	(A,68,43) (US,CA)	RS1/16SS472J		R 9016	(A,31,74)	RAB4CQ101J	D
R 8308	(A,67,40) (US,CA)	RS1/16SS821J		R 9020	(A,14,72)	RS1/16SS101J	
R 8309	(A,66,40) (US,CA)	RS1/16SS821J		R 9021	(B,37,77)	RS1/16SS103J	
R 8310	(A,67,46) (US,CA)	RS1/16SS821J		R 9022	(A,37,69)	RS1/16SS0R0J	
R 8311	(A,66,46) (US,CA)	RS1/16SS821J		R 9028	(B,12,78)	RAB4CQ0R0J	
R 8312	(A,58,36) (US,CA)	RS1/16SS472J		R 9031	(B,12,81)	RAB4CQ0R0J	
R 8313	(A,56,40) (US,CA)	RS1/16SS331J		R 9032	(A,32,89)	RS1/16SS101J	
R 8314	(A,54,40) (US,CA)	RS1/16SS331J		R 9033	(A,32,87)	RAB4CQ470J	
R 8315	(A,55,43) (US,CA)	RS1/16SS472J		R 9034	(B,11,83)	RS1/16SS0R0J	
R 8316	(A,69,33) (US,CA)	RS1/16SS103J		R 9035	(B,11,84)	RS1/16SS0R0J	
R 8317	(A,56,36) (US,CA)	RS1/16SS101J		R 9036	(B,11,85)	RS1/16SS0R0J	
R 8318	(A,69,34) (US,CA)	RS1/16SS103J		R 9038	(A,50,87)	RAB4CQ101J	E
R 8401	(A,105,45) (US,CA)	RS1/16SS0R0J		R 9039	(B,11,86)	RS1/16SS0R0J	
R 8402	(A,107,45) (US,CA)	RS1/16SS470J		R 9041	(B,11,88)	RAB4CQ0R0J	
R 8404	(A,108,47) (US,CA)	RS1/16SS470J		R 9045	(A,50,89)	RAB4CQ101J	
R 8405	(A,110,47) (US,CA)	RS1/16SS101J		R 9050	(A,51,92)	RAB4CQ101J	
R 8407	(A,103,43) (US,CA)	RS1/16SS473J		R 9055	(A,51,95)	RAB4CQ101J	
R 8408	(A,103,44) (US,CA)	RS1/16SS473J		R 9060	(A,51,97)	RS1/16SS101J	
R 8409	(A,103,40) (US,CA)	RS1/16SS473J		R 9062	(A,51,98)	RS1/16SS101J	
R 8410	(A,103,32) (US,CA)	RS1/16SS473J		R 9063	(B,11,101)	RAB4CQ0R0J	
R 8452	(A,116,45) (US,CA)	RS1/16SS470J		R 9064	(A,12,102)	RS1/16SS103J	
R 8453	(A,115,45) (US,CA)	RS1/16SS470J		R 9065	(A,13,102)	RS1/16SS103J	
R 8454	(A,113,47) (US,CA)	RS1/16SS470J		R 9066	(A,14,102)	RS1/16SS103J	F
R 8455	(A,112,44) (US,CA)	RS1/16SS0R0J		R 9067	(A,15,102)	RS1/16SS103J	
R 8456	(A,112,43) (US,CA)	RS1/16SS104J		R 9068	(B,11,103)	RS1/16SS0R0J	

1

2

3

4

Circuit Symbol and No.Part No.Circuit Symbol and No.Part No.

R 9069 (A,16,102)
R 9071 (A,52,100)
R 9073 (A,52,101)

RS1/16SS103J
RS1/16SS470J
RS1/16SS470J

R 9602 (A,40,18) (US,CA)
R 9603 (A,36,22) (US,CA)
R 9604 (A,36,20) (US,CA)

RS1/16SS223J
RS1/16SS103J
RS1/16SS332J

A

R 9074 (B,14,98)
R 9075 (A,51,111)
R 9076 (B,12,104)
R 9077 (B,11,107)
R 9078 (B,14,105)

RS1/16SS103J
RS1/16SS0R0J
RS1/16SS103J
RS1/16SS0R0J
RS1/16SS103J

R 9651 (A,65,137)
R 9653 (A,69,128)
R 9654 (A,70,128)
R 9655 (A,69,130)
R 9658 (B,66,128)

RS1/16SS102J
RS1/16SS1001D
RS1/16SS7502D
RS1/16SS1002D
RS1/4S122J

R 9079 (B,40,103)
R 9080 (B,16,102)
R 9081 (B,17,104)
R 9082 (B,39,101)
R 9083 (B,39,103)

RS1/16SS105J
RS1/16SS1002D
RS1/16SS0R0J
RS1/16SS100J
RS1/16SS471J

R 9702 (A,62,30) (US,CA)
R 9703 (A,61,30) (US,CA)
R 9752 (A,20,51) (US,CA)
R 9802 (A,92,76) (US,CA)
R 9852 (A,92,42) (US,CA)

RS1/16SS103J
RS1/16SS102J
RS1/16SS102J
RS1/16SS102J
RS1/16SS102J

B

R 9084 (B,33,108)
R 9086 (A,51,110)
R 9087 (B,32,108)
R 9088 (B,31,103)
R 9090 (A,55,102)

RS1/16SS151J
RS1/16SS473J
RS1/16SS102J
RS1/16SS102J
RS1/16SS0R0J

R 9902 (A,84,42) (US,CA)
R 9903 (A,77,42) (US,CA)
R 9904 (A,78,42) (US,CA)
R 9905 (A,84,43) (US,CA)
R 9952 (A,69,85)

RS1/16SS102J
RS1/16SS103J
RS1/16SS103J
RS1/16SS103J
RS1/16SS102J

R 9091 (A,38,100)
R 9092 (B,38,108)
R 9093 (B,36,109)
R 9094 (B,36,110)
R 9095 (B,35,109)

RS1/16SS221J
RS1/16SS221J
RS1/16SS151J
RS1/16SS151J
RS1/16SS151J

R 9953 (A,69,80)

RS1/16SS102J

CAPACITORS

R 9096 (B,32,103)
C R 9097 (A,30,101)
R 9098 (B,16,100)
R 9207 (B,79,118)
R 9208 (B,78,118)

RS1/16SS151J
RS1/16SS0R0J
RS1/16SS103J
RS1/10SR0R0J
RS1/10SR0R0J

C 8101 (A,117,45) (US,CA)
C 8102 (A,88,46) (US,CA)
C 8103 (A,96,46) (US,CA)
C 8104 (A,84,47) 10 uF(US,CA)
C 8105 (A,93,47) 10 uF(US,CA)

CCSSCH100D50
CKSRYB104K50
CKSSYB104K10
DCH1201
DCH1201

C

R 9209 (B,78,112)
R 9210 (B,78,111)
R 9211 (B,78,110)
R 9212 (B,79,109)
R 9213 (B,72,117)

RS1/16SS331J
RS1/16SS104J
RS1/16SS104J
RS1/16SS104J
RS1/16SS51R0D

C 8106 (A,84,45) 10 uF(US,CA)
C 8107 (A,93,45) 10 uF(US,CA)
C 8108 (A,120,47) (US,CA)
C 8109 (A,96,47) (US,CA)
C 8110 (A,88,47) (US,CA)

DCH1201
DCH1201
CKSSYB102K50
CKSSYB102K50
CKSSYB102K50

D

R 9214 (B,70,117)
R 9215 (A,72,114)
R 9216 (A,71,106)
R 9217 (A,70,106)
R 9219 (A,71,114)

RS1/16SS51R0D
RS1/16SS1002D
RS1/16SS104J
RS1/16SS104J
RS1/16SS331J

C 8202 (A,94,81) (US,CA)
C 8203 (A,90,97) (US,CA)
C 8204 (A,91,81) (US,CA)
C 8251 (A,100,79) (US,CA)
C 8301 (A,72,47) (US,CA)

CKSSYB104K10
CKSSYB104K10
CKSSYB104K10
CKSRYB105K10
CKSSYB102K50

R 9220 (B,65,118)
R 9221 (B,65,116)
R 9222 (A,66,110)
R 9223 (A,66,108)
R 9224 (A,64,111)

RS1/16SS3300D
RS1/16SS3300D
RS1/16SS104J
RS1/16SS104J
RS1/16SS331J

C 8302 (A,74,47) (US,CA)
C 8303 (A,79,47) (US,CA)
C 8304 (A,72,38) (US,CA)
C 8305 (A,72,40) (US,CA)
C 8306 (A,78,45) (US,CA)

CKSSYB102K50
CKSRYB105K16
CKSRYB105K16
CKSSYB104K10
CKSSYB104K10

E

R 9225 (A,64,112)
R 9302 (B,37,71)
R 9304 (A,16,91)
R 9305 (A,17,91)
R 9306 (A,20,94)

RS1/16SS104J
RS1/16SS0R0J
RS1/16SS103J
RAB4CQ0R0J
RAB4CQ0R0J

C 8307 (A,71,43) (US,CA)
C 8308 (A,71,46) (US,CA)
C 8309 (A,69,37) (US,CA)
C 8310 (A,69,44) (US,CA)
C 8314 (A,58,37) (US,CA)

CKSSYB103K25
CKSSYB103K25
CKSSYB103K25
CKSSYB103K25
CKSSYB103K25

R 9307 (A,24,91)
R 9308 (A,26,91)
R 9401 (A,53,119)
R 9402 (A,53,118)
R 9403 (A,57,119)

RAB4CQ0R0J
RAB4CQ0R0J
RAB4CQ0R0J
RS1/16SS220J
RS1/16SS51R0D
RS1/16SS0R0J

C 8316 (A,55,44) (US,CA)
C 8317 (A,53,36) (US,CA)
C 8318 (A,55,36) (US,CA)
C 8321 (A,55,35) (US,CA)
C 8322 (A,55,37) (US,CA)

CKSSYB103K25
CKSRYB105K16
CKSSYB103K25
CKSSYB104K16
CKSSYB102K50

F

R 9404 (A,51,119)
R 9405 (A,51,117)
R 9451 (A,17,116)
R 9452 (A,17,117)
R 9454 (A,19,117)

RS1/16SS101J
RS1/16SS101J
RS1/16SS220J
RS1/16SS51R0D
RS1/16SS101J

C 8401 (A,106,45) (US,CA)
C 8403 (A,109,34) (US,CA)
C 8404 (A,109,33) (US,CA)
C 8405 (A,104,31) (US,CA)
C 8406 (A,110,31) 10 uF(US,CA)

CKSSYB103K16
CKSSYB102K50
CKSSYB104K10
CKSRYB474K10
DCH1201

R 9455 (A,17,118)
R 9503 (B,42,71)

RS1/16SS101J
RS1/16SS0R0J

C 8407 (A,107,34) (US,CA)
C 8408 (A,103,34) (US,CA)
C 8409 (A,103,37) (US,CA)

CKSSYB102K50
CKSQYB225K16
CKSQYB225K16

1

2

3

4

5		6		7		8	
<u>Circuit Symbol and No.</u>		<u>Part No.</u>		<u>Circuit Symbol and No.</u>		<u>Part No.</u>	
C 8410	(A,107,33) (US,CA)	CKSSYB104K10		C 9044	(B,16,90)	CKSSYB104K10	
C 8411	(A,107,31) 10 uF(US,CA)	DCH1201		C 9045	(A,37,93)	CKSSYB104K10	
C 8451	(A,110,40)	CKSRYB102K50		C 9046	(A,36,93)	CKSRYB105K10	A
C 8452	(A,113,44) (US,CA)	CKSSYB103K16		C 9047	(B,15,92)	CKSRYB105K10	
C 8453	(A,114,31) 10 uF(US,CA)	DCH1201		C 9048	(B,16,93)	CKSSYB104K10	
C 8454	(A,116,33) (US,CA)	CKSSYB104K10		C 9049	(A,37,95)	CKSSYB104K10	
C 8455	(A,116,29) 10 uF(US,CA)	DCH1201		C 9050	(A,36,95)	CKSRYB105K10	
C 8457	(A,116,34) (US,CA)	CKSSYB102K50		C 9051	(B,15,96)	CKSRYB105K10	
C 8501	(A,54,123)	CCSQCH101J50		C 9052	(B,16,96)	CKSSYB104K10	
C 8502	(A,58,123)	CCSQCH101J50		C 9053	(B,40,105)	CCSSCH7R0D50	
C 8503	(B,51,119)	CKSRYB223K50		C 9054	(A,36,98)	CKSSYB104K10	
C 8504	(B,53,116)	CKSRYB223K50		C 9055	(A,31,98)	CKSSYB104K10	
C 8505	(A,41,123)	CCSQCH101J50		C 9056	(B,32,104)	CKSSYB104K10	
C 8506	(A,37,123)	CCSQCH101J50		C 9057	(B,29,104)	CKSRYB105K10	B
C 8507	(B,55,119)	CKSRYB223K50		C 9058	(B,25,103)	CKSSYB104K10	
C 8508	(B,55,117)	CKSRYB223K50		C 9059	(A,34,97)	CKSRYB105K10	
C 8551	(B,42,120)	CKSQYB102K50		C 9060	(A,31,97)	CKSRYB105K10	
C 8651	(A,90,25) 4.7 uF(US,CA)	CCG1201		C 9061	(B,32,105)	CKSRYB105K10	
C 8652	(A,102,24) 4.7 uF(US,CA)	CCG1201		C 9062	(B,28,102)	CKSSYB104K10	
C 8653	(A,89,21) (US,CA)	CKSSYB681K50		C 9063	(B,25,104)	CKSSYB104K10	
C 8654	(A,101,20) (US,CA)	CKSSYB681K50		C 9064	(B,26,106) 4.7 uF	CCG1201	
C 8655	(A,91,23) (US,CA)	CCSSCH820J50		C 9065	(A,21,105)	CKSSYB104K10	
C 8656	(A,99,22) (US,CA)	CCSSCH820J50		C 9066	(A,21,106)	CKSSYB104K10	
C 8657	(A,98,25) (US,CA)	CKSSYB104K10		C 9067	(A,22,108) 4.7 uF	CCG1201	
C 8707	(A,119,76) (US,CA)	CKSSYB471K50		C 9070	(B,37,103)	CCSSCH7R0D50	C
C 8708	(A,108,76) (US,CA)	CKSSYB471K50		C 9071	(B,23,104) 10 uF	DCH1201	
C 9004	(A,44,105) 10 uF	DCH1201		C 9072	(B,21,104) 10 uF	DCH1201	
C 9006	(A,46,105) 10 uF	DCH1201		C 9073	(A,27,100)	CKSSYB104K10	
C 9007	(B,41,73)	CKSRYB105K10		C 9074	(A,24,100)	CKSSYB104K10	
C 9010	(B,31,71) 10 uF	DCH1201		C 9075	(B,18,105)	CKSSYB104K10	
C 9011	(A,14,84)	CKSSYB103K16		C 9076	(A,54,109)	CKSSYB102K50	
C 9012	(B,38,76)	CKSRYB105K10		C 9079	(A,27,101)	CKSSYB104K10	
C 9013	(B,31,69) 10 uF	DCH1201		C 9080	(A,26,101)	CKSSYB104K10	
C 9015	(B,35,75)	CKSRYB105K10		C 9082	(A,24,101)	CKSSYB104K10	
C 9016	(A,32,85)	CKSRYB105K10		C 9083	(A,23,101)	CKSSYB104K10	
C 9017	(B,30,76)	CKSRYB105K10		C 9084	(B,19,107)	CKSSYB104K10	D
C 9018	(B,25,75)	CKSRYB105K10		C 9085	(B,18,107)	CKSSYB104K10	
C 9019	(B,23,75)	CKSRYB105K10		C 9086	(B,25,110) 10 uF	DCH1201	
C 9020	(A,14,81)	CKSRYB105K10		C 9087	(B,28,107) 10 uF	DCH1201	
C 9021	(B,20,75)	CKSRYB105K10		C 9088	(B,25,112) 10 uF	DCH1201	
C 9022	(B,18,75)	CKSRYB105K10		C 9089	(B,25,113) 10 uF	DCH1201	
C 9025	(B,34,76)	CKSSYB104K10		C 9090	(B,25,115) 10 uF	DCH1201	
C 9026	(A,33,83)	CKSSYB104K10		C 9097	(B,39,100)	CCSSCH470J50	
C 9027	(B,30,77)	CKSSYB104K10		C 9201	(A,100,135)	CKSSYB102K50	
C 9028	(B,25,77)	CKSSYB104K10		C 9202	(A,103,131) Capacitor	CEVW330M10	
C 9029	(B,23,77)	CKSSYB104K10		C 9203	(A,101,127)	CKSSYB104K10	
C 9030	(A,14,83)	CKSSYB104K10		C 9204	(B,76,106)	CKSSYB104K10	E
C 9031	(B,20,77)	CKSSYB104K10		C 9207	(B,77,114)	CKSSYB104K10	
C 9032	(B,18,77)	CKSSYB104K10		C 9208	(B,74,117)	CKSSYB104K10	
C 9033	(A,38,84)	CKSSYB104K10		C 9211	(B,66,105)	CKSSYB104K10	
C 9034	(A,37,88)	CKSRYB105K10		C 9212	(B,63,117)	CCSQCH103J50	
C 9035	(B,41,84)	CKSSYB104K10		C 9215	(B,67,117)	CCSRCH681J50	
C 9036	(A,43,87)	CKSRYB105K10		C 9216	(B,65,114)	CKSSYB104K10	
C 9037	(B,15,86)	CKSRYB105K10		C 9301	(B,36,71)	CKSSYB103K16	
C 9038	(A,39,86)	CKSSYB104K10		C 9302	(A,29,91)	CKSSYB102K50	
C 9039	(B,16,86)	CKSSYB104K10		C 9303	(A,22,91)	CKSSYB104K10	
C 9040	(A,40,86)	CKSRYB105K10		C 9304	(A,29,90)	CKSSYB104K10	F
C 9041	(A,37,90)	CKSSYB104K10		C 9305	(A,20,111) 10 uF	DCH1201	
C 9042	(B,15,90)	CKSRYB105K10		C 9401	(A,48,119) 10 uF	DCH1201	
C 9043	(A,36,90)	CKSRYB105K10		C 9402	(A,48,117) 10 uF	DCH1201	

1

2

3

4

Circuit Symbol and No.**Part No.****Circuit Symbol and No.****Part No.**

C 9403	(A,41,118)	CKSSYB104K10	R 204	(A,23,19)	RS1/16SS221J
C 9404	(A,39,118) 10 uF	DCH1201	R 206	(B,29,26)	RS1/16SS104J
C 9451	(A,22,116) 10 uF	DCH1201	R 210	(A,36,21)	RS1/16SS102J
C 9452	(A,21,118) 10 uF	DCH1201	R 211	(A,49,25)	RS1/16SS221J
C 9453	(A,29,118)	CKSSYB104K10	R 212	(A,48,24)	RS1/16SS221J
C 9454	(A,30,118) 10 uF	DCH1201	R 213	(A,45,28)	RS1/16SS221J
C 9651	(A,61,128) 10 uF	DCH1165	R 214	(B,29,49)	RS1/16SS472J
C 9653	(A,64,127) 10 uF	DCH1201	R 216	(B,29,48)	RS1/16SS472J
C 9751	(A,20,54) (US,CA)	CKSRYB105K10	R 221	(A,32,50)	RS1/16SS103J
C 9752	(A,20,57) 10 uF(US,CA)	DCH1201	R 222	(A,34,50)	RS1/16SS103J
C 9801	(A,83,72) 10 uF(US,CA)	DCH1201	R 225	(A,29,49)	RS1/16SS103J
C 9802	(A,93,72) 10 uF(US,CA)	DCH1201	R 226	(A,28,49)	RS1/16SS393J
C 9851	(A,95,33) 10 uF(US,CA)	DCH1201	R 227	(B,28,47)	RS1/16SS562J
C 9852	(A,95,42) 10 uF(US,CA)	DCH1201	R 229	(B,26,46)	RS1/16SS472J
C 9901	(A,87,33) 10 uF(US,CA)	DCH1201	R 232	(B,28,45)	RS1/16SS122J
C 9902	(A,87,42) 10 uF(US,CA)	DCH1201	R 233	(B,20,26)	RS1/16SS103J
C 9903	(A,80,33) 10 uF(US,CA)	DCH1201	R 234	(A,15,26)	RS1/16SS473J
C 9951	(A,65,82)	CCSSCH101J50	R 235	(A,20,24)	RS1/16SS473J
C 9952	(A,64,82)	CKSSYB102K50	R 237	(A,43,23)	RS1/16SS471J
C 9953	(A,62,83) 10 uF	DCH1201	R 238	(B,53,23)	RS1/16SS222J
C 9954	(A,62,71) 10 uF	DCH1201	R 239	(B,19,26)	RS1/16SS473J
C 9955	(A,64,72)	CCSSCH101J50	R 240	(B,47,11)	RS1/16S473J
C 9956	(A,65,72)	CKSSYB102K50	R 241	(B,47,12)	RS1/16SS103J
C 9957	(A,66,71) 10 uF	DCH1201	R 254	(B,12,34)	RS1/16SS104J
C 9958	(A,68,72)	CCSSCH101J50	R 255	(B,12,36)	RS1/16SS104J
C 9959	(A,69,72)	CKSSYB102K50	R 256	(B,12,33)	RS1/16SS104J
C 9960	(A,74,73) 10 uF	DCH1201	R 270	(A,47,34)	RS1/16SS121J
C 9961	(A,76,72)	CCSSCH101J50	R 290	(B,52,14)	RS1/16SS0R0J
C 9962	(A,77,72)	CKSSYB102K50	R 291	(B,15,42)	RS1/16SS0R0J

C**Unit Number: CWX3936****Unit Name : CD Core Unit(S11Comp-T)**

D

MISCELLANEOUS

IC 201	(A,32,34) IC	PE5747B	R 602	(B,48,27)	RS1/16SS0R0J
IC 203	(B,49,19) IC	NJM2886DL3-33	R 605	(B,46,31)	RS1/10S0R0J
IC 204	(B,28,35) SDRAM	IS45S16100E-7TLA1	R 606	(B,46,27)	RS1/10S0R0J
IC 301	(A,65,28) IC	BA5839FP	R 701	(A,37,22)	RS1/16SS221J
Q 101	(B,9,57) Transistor	2SA1577	R 702	(A,23,24)	RS1/16SS221J
Q 201	(B,24,26) Chip Digital Transistor	LTA123JUB	R 704	(A,24,22)	RS1/16SS221J
TH201	(A,36,52) Thermistor	CCX1063	R 705	(A,23,22)	RS1/16SS221J
X 201	(A,41,21)Ceramic Resonator 16.934 MHz	CSS1603	R 706	(A,23,20)	RS1/16SS221J
S 901	(A,43,54) Spring Switch(HOME)	CSN1080	R 712	(B,60,20)	RS1/16S0R0J
S 903	(B,22,13) Spring Switch(DSCSNS)	CSN1081	R 716	(B,34,12)	RS1/16S0R0J
S 905	(B,12,26) Spring Switch(8EJ)	CSN1081			
CN101	(A,17,59) Connector	CKS4808			
CN701	(A,38,11) Connector	CKS5854			

CAPACITORS**RESISTORS**

R 101	(B,6,60)	RS1/10SR2R4J	C 106	(B,12,55)	CKSQYB475K6R3
R 102	(B,8,60)	RS1/10SR2R4J	C 202	(A,21,27)	CKSSYB104K10
R 103	(B,9,60)	RS1/10SR2R7J	C 203	(A,36,51)	CKSSYB103K16
R 104	(B,11,52)	RS1/16SS222J	C 204	(A,21,21)	CKSSYB103K16
R 107	(B,16,48)	RS1/16SS105J	C 205	(B,37,26)	CKSQYB475K6R3
R 108	(B,17,47)	RS1/16SS0R0J	C 206	(A,38,23)	CKSSYB104K10
R 202	(A,16,24)	RS1/16SS473J	C 207	(A,41,23)	CKSRYB104K16
R 203	(A,36,50)	RS1/16S473J	C 209	(B,45,34)	CEVW220M6R3
			C 210	(B,43,31)	CKSSYB104K10
			C 211	(A,44,27)	CKSSYB104K10

CVX-2618ZTS1/XHUS

1

2

3

4

5
Circuit Symbol and No.

6
Part No.

C 213	(A,39,45)	CKSSYB104K10
C 214	(A,44,28)	CKSSYB104K10
C 215	(B,42,32)	CKSSYB104K10
C 216	(A,27,50)	CKSSYB332K50
C 217	(A,26,47)	CKSSYB104K10
C 218	(A,27,49)	CKSSYB473K16
C 219	(A,25,45)	CKSSYB104K10
C 220	(A,25,46)	CKSSYB182K50
C 221	(A,21,46)	CKSSYB104K10
C 223	(B,26,47)	CCSSCH4R0C50
C 224	(A,22,43)	CKSSYB104K10
C 226	(A,19,42)	CCSSCH680J50
C 227	(A,19,40)	CCSSCH470J50
C 228	(B,16,41)	CKSSYB103K16
C 229	(A,16,44)	CKSSYB104K10
C 232	(B,54,15)	CKSRYB105K10
C 236	(B,18,43)	CKSSYB104K10
C 239	(B,28,46)	CCSSCH220J50
C 240	(A,17,37)	CKSSYB104K10
C 250	(A,32,51)	CKSSYB102K50
C 251	(A,34,51)	CKSSYB102K50
C 270	(B,16,33)	CKSSYB104K10
C 271	(B,33,28)	CKSSYB104K10
C 272	(B,30,28)	CKSSYB104K10
C 273	(B,39,31)	CKSSYB104K10
C 274	(B,30,42)	CKSSYB104K10
C 275	(B,33,42)	CKSSYB104K10
C 280	(A,13,48)	CCSSCH101J50
C 303	(A,61,35)	CKSSYB472K25
C 304	(A,59,35)	CKSSYB223K16
C 307	(A,69,21)	CKSRYB104K16
C 308	(B,48,9)	CKSRYB105K10
C 703	(B,43,10)	CCSSCH101J50
C 704	(B,44,13)	CKSSYB102K50

Keyboard Unit
Consists of
Keyboard PCB
BT ANT PCB

DE

Unit Number : CWT1052(US,CA)
Unit Number : CWT1053(US,CA)
Unit Number : CWT1055(QG)
Unit Number : CWT1056(QG)
Unit Name : Keyboard Unit

MISCELLANEOUS

IC 6000	(B,210,54) IC	PEG873A8
IC 6130	(B,68,51) L-MOS And Gate	TC7SET08FUS1
IC 6180	(B,159,44) L-MOS And Gate	TC7SET08FUS1
IC 6200	(B,231,68) Composite Unit	CWX3665
IC 6220	(B,192,38) IC	S-80940CNMC-G9A
IC 6230	(B,133,53) IC	S-812C56AUA-C3K
IC 6700	(B,44,76) IC	LC75700TS
IC 6800	(B,115,26) Composite Unit	CWX3938

7
Circuit Symbol and No.

8
Part No.

Q 6130	(B,58,50) Transistor	RN4987
Q 6131	(B,60,56) Transistor	KRX202U
Q 6132	(B,70,55) Transistor	KRX202U
Q 6150	(B,176,52) Transistor	KRX202U
Q 6151	(B,175,56) Transistor	2SC4081
Q 6160	(B,165,65) Transistor	RN4987
Q 6161	(B,162,64) Chip Transistor	LTA114EUB
Q 6170	(B,164,52) Transistor	KTX101U
Q 6210	(B,108,68) Transistor	2SA1162
Q 6211	(B,108,71) Chip Transistor	LTC114EUB
Q 6230	(B,130,63) Transistor	KRX203U
Q 6231	(B,124,55) Transistor	2SC4154-11
Q 6232	(B,124,60) Transistor	2SC4154-11
Q 6233	(B,124,57) Transistor	ISA1602AM1
Q 6234	(B,122,65) Digital Transistor	LTC144EUB
Q 6235	(B,112,59) Transistor	2SA2126
Q 6236	(B,113,64) Chip Transistor	DTA144EUA
Q 6250	(B,35,48) Transistor	2SB1132
Q 6251	(B,44,53) Transistor	2SC4081
Q 6260	(B,40,60) Transistor	2SB1132
Q 6261	(B,37,63) Transistor	2SC4081
Q 6301	(B,224,73) Transistor	2SC4081
Q 6302	(B,209,73) Transistor	2SC4081
Q 6303	(B,215,73) Transistor	2SC4081
Q 6304	(B,212,73) Transistor	2SC4081
Q 6305	(B,218,73) Transistor	2SC4081
Q 6330	(B,162,34)Transistor(CWT1052,CWT1053)	2SB1260
Q 6331	(B,161,28)Chip Transistor(CWT1052,CWT1053)	LTC114EUB
Q 6332	(B,168,29)Chip Transistor(CWT1052,CWT1053)	LTC114EUB
Q 6400	(B,233,87) Transistor	2SA1576A
Q 6401	(B,49,101) Transistor	2SA1576A
Q 6402	(B,228,97) Transistor	2SA1576A
Q 6403	(B,45,101) Transistor	2SA1576A
Q 6404	(B,41,101) Transistor	2SA1576A
Q 6405	(B,233,103) Transistor	2SA1576A
Q 6406	(B,240,103) Transistor	2SA1576A
Q 6450	(B,30,19) Transistor	2SA1576A
Q 6451	(B,30,25) Transistor	2SA1576A
Q 6452	(B,30,31) Transistor	2SA1576A
Q 6453	(B,25,43) Transistor	2SA1576A
Q 6454	(B,30,13) Transistor	2SA1576A
Q 6455	(B,25,37) Transistor	2SA1576A
Q 6456	(B,37,24) Transistor	2SA1576A
Q 6457	(B,44,22) Transistor	2SC4081
Q 6458	(B,52,24) Transistor	2SA1576A
Q 6700	(B,46,67) Digital Transistor	LTC144EUB
Q 6800	(B,104,39) Transistor	2SC4081
Q 6801	(B,112,41) Transistor	2SB1184F5
Q 6802	(B,98,43) Transistor	2SA1576A
Q 6803	(B,104,44) Chip Transistor	LTC114EUB
Q 6804	(B,102,50) Transistor	2SA1576A
Q 6805	(B,101,44) Transistor	KRX201U
Q 6850	(B,70,22) Digital Transistor	LTC144EUB
D 6000	(B,224,63) Diode	1SS352
D 6130	(B,63,53) Diode	1SS352
D 6131	(B,63,55) Diode	1SS352
D 6132	(B,63,57) Diode	1SS352
D 6150	(B,176,63) Diode	UDZS5R1(B)
D 6151	(B,168,59) Diode	HZU6R2(B1)
D 6160	(B,159,63) Diode	1SS352

	1	2	3	4
	<u>Circuit Symbol and No.</u>	<u>Part No.</u>	<u>Circuit Symbol and No.</u>	<u>Part No.</u>
	D 6170 (B,160,55) Diode	1SS352	D 6455 (A,104,50)White LED(CWT1052,CWT1055)	C2-1158LDS-109
	D 6230 (B,126,64) Diode	1SS352	(A,104,50)White LED(CWT1053,CWT1056)	C34-1158LDS-109
A	D 6231 (B,129,58) Diode	UDZS9R1(B)	D 6456 (A,37,55)White LED(CWT1052,CWT1055)	C2-1158LDS-109
	D 6232 (B,125,52) Diode	UDZS16(B)	(A,37,55)White LED(CWT1053,CWT1056)	C34-1158LDS-109
	D 6233 (B,118,66) Diode	1SS352	D 6457 (A,28,55)White LED(CWT1052,CWT1055)	C2-1158LDS-109
	D 6234 (B,118,64) Diode	1SS352	(A,28,55)White LED(CWT1053,CWT1056)	C34-1158LDS-109
	D 6235 (B,118,68) Diode	1SS352	D 6458 (A,158,32)White LED(CWT1052,CWT1055)	C2-1158LDS-109
	D 6236 (B,114,50) Diode	1SR154-400	(A,158,32)White LED(CWT1053,CWT1056)	C34-1158LDS-109
	D 6250 (B,37,55) Diode	RKZ11KG(B2)	D 6459 (A,137,23)White LED(CWT1052,CWT1055)	C2-1158LDS-109
	D 6251 (B,37,51) Diode	1SS352	(A,137,23)White LED(CWT1053,CWT1056)	C34-1158LDS-109
	D 6252 (B,49,54) Diode	1SR154-400	D 6460 (A,25,34)White LED(CWT1052,CWT1055)	C2-1158LDS-109
	D 6253 (B,49,47) Diode	1SR154-400	(A,25,34)White LED(CWT1053,CWT1056)	C34-1158LDS-109
	D 6260 (B,35,60) Diode	1SS352	D 6461 (A,24,19)White LED(CWT1052,CWT1055)	C2-1158LDS-109
B	D 6261 (B,49,61) Diode	RB160M-30	(A,24,19)White LED(CWT1053,CWT1056)	C34-1158LDS-109
	D 6301 (A,162,58) LED	VYPY1105W-3C52A	D 6462 (B,41,27) Diode	UDZS5R1(B)
	D 6302 (A,63,58) LED	VYPY1105W-3C52A	D 6463 (A,84,51)White LED(CWT1052,CWT1055)	C2-1158LDS-109
	D 6303 (A,124,58) LED	VFY1105W-3C82D	(A,84,51)White LED(CWT1053,CWT1056)	C34-1158LDS-109
	D 6304 (A,104,58) LED	VFY1105W-3C82D	D 6750 (B,56,92) Diode	1SS352
	D 6305 (A,180,58) LED	VYPY1105W-3C52A	D 6752 (B,223,84) Diode	1SS352
	D 6330 (A,121,21) LED	VFR1105W-3C82A	D 6753 (B,182,85) Diode	1SS352
	D 6331 (A,211,62)LED(CWT1052,CWT1053)	VFY1105W-3C82D	D 6754 (B,59,109) Diode	1SS352
	D 6332 (A,194,62)LED(CWT1052,CWT1053)	VFY1105W-3C82D	D 6756 (B,230,113) Diode	1SS352
	D 6333 (B,162,39) Diode	1SS352	D 6758 (B,108,83) Diode	1SS352
	D 6334 (B,166,37) Diode(CWT1052,CWT1053)	1SS352	D 6759 (B,57,81) Diode	1SS352
C	D 6335 (B,169,34) Diode(CWT1052,CWT1053)	1SS352	D 6761 (B,51,90) Diode	1SS352
	D 6336 (B,158,27) Diode(CWT1052,CWT1053)	1SS352	D 6800 (B,99,39) Diode	RKZ18KG(B2)
	D 6337 (B,164,27) Diode(CWT1052,CWT1053)	1SS352	D 6801 (B,130,40) Diode	1SR154-400
	D 6338 (B,166,27) Diode(CWT1052,CWT1053)	1SS352	L 6000 (B,202,76) Inductor	CTF1786
	D 6339 (A,121,25) LED	VFR1105W-3C82A	L 6001 (B,220,49) Inductor	CTF1786
	D 6340 (A,221,62)LED(CWT1052,CWT1053)	VFY1105W-3C82D	L 6130 (B,67,54) Inductor	CTF1786
	D 6341 (A,204,62)LED(CWT1052,CWT1053)	VFY1105W-3C82D	L 6131 (B,59,52) Inductor	CTF1786
	D 6360 (A,109,23) LED	VFR1105W-3C82A	L 6180 (B,163,43) Inductor	CTF1786
	D 6400 (A,210,88)White LED(CWT1052,CWT1055)	C2-1158LDS-109	L 6200 (B,235,76) Inductor	CTF1786
	(A,210,88)White LED(CWT1053,CWT1056)	C34-1158LDS-109	L 6220 (B,189,43) Inductor	CTF1786
D	D 6401 (A,190,88)White LED(CWT1052,CWT1055)	C2-1158LDS-109	L 6250 (B,44,45) Chip Beads	VTL1129
	(A,190,88)White LED(CWT1053,CWT1056)	C34-1158LDS-109	L 6330 (B,156,38) Inductor	CTF1617
	D 6402 (A,90,88)White LED(CWT1052,CWT1055)	C2-1158LDS-109	L 6400 (B,46,28) Chip Beads	VTL1129
	(A,90,88)White LED(CWT1053,CWT1056)	C34-1158LDS-109	L 6700 (B,50,72) Inductor	LCTAW101J2520
	D 6403 (A,65,88)White LED(CWT1052,CWT1055)	C2-1158LDS-109	L 6800 (B,131,45) Inductor	CTH1467
	(A,65,88)White LED(CWT1053,CWT1056)	C34-1158LDS-109	L 6850 (B,93,16) Inductor	CTF1558
	D 6404 (A,206,116) White LED	VMW1141CX-17	L 6851 (B,60,25) Inductor	CTF1786
	D 6405 (A,74,116) White LED	VMW1141CX-17	L 6852 (B,65,26) Inductor	CTF1786
	D 6406 (A,39,120) White LED	VMW1141CX-17	X 6000 (B,210,42) Resonator 9.83 MHz	CSS1820
	D 6407 (A,221,116)White LED(CWT1052,CWT1055)	C2-1158LDS-109	S 6750 (A,24,108)Rotary Encoder(PWR/VOL)	CSD1178
	(A,221,116)White LED(CWT1053,CWT1056)	C34-1158LDS-109	S 6751 (A,258,107)Encoder(TUNE/SCROLL)	CSD1152
	D 6408 (A,6,114) White LED	VMW1141CX-17	ANT1 (A,18,11) BT Antenna	CWX3733
E	D 6409 (A,27,89) White LED	VMW1141CX-17	CN1 (A,6,5) Connector	CKS5749
	D 6410 (A,244,119) White LED	VMW1141CX-17	CN6000 (B,73,68) Connector	CKS6465
	D 6411 (A,59,117)White LED(CWT1052,CWT1055)	C2-1158LDS-109		
	(A,59,117)White LED(CWT1053,CWT1056)	C34-1158LDS-109		
	D 6412 (A,276,113) White LED	VMW1141CX-17		
	D 6413 (A,255,88) White LED	VMW1141CX-17		
	D 6450 (A,164,51)White LED(CWT1052,CWT1055)	C2-1158LDS-109		
	(A,164,51)White LED(CWT1053,CWT1056)	C34-1158LDS-109		
	D 6451 (A,177,51)White LED(CWT1052,CWT1055)	C2-1158LDS-109		
	(A,177,51)White LED(CWT1053,CWT1056)	C34-1158LDS-109		
	D 6452 (A,124,50)White LED(CWT1052,CWT1055)	C2-1158LDS-109		
	(A,124,50)White LED(CWT1053,CWT1056)	C34-1158LDS-109		
F	D 6453 (A,145,52)White LED(CWT1052,CWT1055)	C2-1158LDS-109		
	(A,145,52)White LED(CWT1053,CWT1056)	C34-1158LDS-109		
	D 6454 (A,63,51)White LED(CWT1052,CWT1055)	C2-1158LDS-109		
	(A,63,51)White LED(CWT1053,CWT1056)	C34-1158LDS-109		

RESISTORS

R 6001	(B,221,66)	RS1/16SS473J
R 6002	(B,224,57)	RS1/16SS473J
R 6003	(B,225,55)	RS1/16SS473J
R 6005	(B,221,57)	RS1/16SS473J
R 6006	(B,221,55)	RS1/16SS473J
R 6008	(B,221,67)	RS1/16SS101J
R 6009	(B,224,65)	RS1/16SS473J
R 6010	(B,221,63)	RS1/16SS221J
R 6011	(B,221,62)	RS1/16SS102J
R 6012	(B,221,61)	RS1/16SS101J

5		6		7		8	
<u>Circuit Symbol and No.</u>		<u>Part No.</u>		<u>Circuit Symbol and No.</u>		<u>Part No.</u>	
R 6013	(B,221,60)	RS1/16SS101J		R 6074	(B,186,69)	RS1/16SS473J	
R 6014	(B,220,48)	RS1/16SS102J		R 6075	(B,186,71)	RS1/16SS473J	
R 6015	(B,220,47)	RS1/16SS102J		R 6076	(B,189,71)	RS1/16SS473J	
R 6016	(B,223,55)	RS1/16SS102J		R 6077	(B,190,69)	RS1/16SS473J	A
R 6017	(B,224,53)	RS1/16SS102J		R 6078	(B,191,71)	RS1/16SS473J	
R 6018	(B,218,66)	RS1/16SS101J		R 6079	(B,193,69)	RS1/16SS473J	
R 6019	(B,219,67)	RS1/16SS102J		R 6080	(B,194,71)	RS1/16SS473J	
R 6020	(B,216,64)	RS1/16SS102J		R 6081	(B,211,66)	RS1/16SS101J	
R 6021	(B,214,64)	RS1/16SS102J		R 6085	(B,196,71)	RS1/16SS473J	
R 6022	(B,214,66)	RS1/16SS473J		R 6130	(B,66,50)	RS1/16SS473J	
R 6023	(B,213,64)	RS1/16SS101J		R 6131	(B,63,47)	RS1/16SS473J	
R 6025	(B,211,64)	RS1/16SS101J		R 6132	(B,69,47)	RS1/10SR101J	
R 6026	(B,210,64)	RS1/16SS101J		R 6133	(B,59,53)	RS1/16SS473J	
R 6027	(B,209,64)	RS1/16SS101J		R 6150	(B,177,49)	RS1/16SS473J	
R 6028	(B,207,64)	RS1/16SS102J		R 6151	(B,176,49)	RS1/16SS101J	B
R 6029	(B,196,69)	RS1/16SS473J		R 6152	(B,176,61)	RS1/16SS104J	
R 6030	(B,196,68)	RS1/16SS473J		R 6153	(B,174,61)	RS1/16SS822J	
R 6031	(B,196,67)	RS1/16SS473J		R 6154	(B,173,58)	RS1/16SS103J	
R 6032	(B,220,43)	RS1/16SS101J		R 6155	(B,177,59)	RS1/10SR392J	
R 6033	(B,219,43)	RS1/16SS101J		R 6156	(B,172,60)	RS1/4SA222J	
R 6034	(B,217,43)	RS1/16SS101J		R 6160	(B,167,63)	RS1/16SS223J	
R 6035	(B,215,43)	RS1/16SS103J		R 6161	(B,165,62)	RS1/16SS223J	
R 6036	(B,213,43)	RS1/16SS102J		R 6162	(B,164,62)	RS1/16SS222J	
R 6037	(B,211,44)	RS1/16SS0R0J		R 6163	(B,162,61)	RS1/10SR102J	
R 6038	(B,206,43)	RS1/16SS473J		R 6170	(B,169,54)	RS1/16SS472J	
R 6039	(B,206,40)	RS1/16SS473J		R 6171	(B,166,52)	RS1/16SS103J	C
R 6040	(B,205,40)	RS1/16SS102J		R 6172	(B,166,54)	RS1/16SS103J	
R 6041	(B,201,44)	RS1/16SS102J		R 6173	(B,159,51)	RS1/10SR512J	
R 6042	(B,188,50)	RS1/16SS473J		R 6174	(B,160,51)	RS1/16SS472J	
R 6043	(B,201,43)	RS1/16SS102J		R 6175	(B,162,53)	RS1/10SR511J	
R 6044	(B,188,47)	RS1/16SS473J		R 6180	(B,161,47)	RS1/16SS103J	
R 6045	(B,204,44)	RS1/16SS101J		R 6181	(B,159,48)	RS1/10SR101J	
R 6046	(B,204,40)	RS1/16SS101J		R 6182	(B,163,45)	RS1/10SR101J	
R 6047	(B,203,40)	RS1/16SS101J		R 6183	(B,161,46)	RS1/16SS392J	
R 6048	(B,199,62)	RS1/16SS102J		R 6184	(B,157,43)	RS1/10SR101J	
R 6049	(B,199,61)	RS1/16SS102J		R 6200	(B,229,73)	RS1/16SS220J	D
R 6050	(B,199,60)	RS1/16SS102J		R 6201	(B,229,63)	RS1/16SS103J	
R 6051	(B,199,59)	RS1/16SS102J		R 6210	(B,111,69)	RS1/16SS103J	
R 6052	(B,199,58)	RS1/16SS102J		R 6211	(B,111,67)	RS1/16SS223J	
R 6053	(B,187,67)	RS1/16SS101J		R 6220	(B,189,42)	RS1/16SS473J	
R 6054	(B,197,57)	RS1/16SS102J		R 6230	(B,128,62)	RS1/10SR222J	
R 6055	(B,197,56)	RS1/16SS102J		R 6231	(B,125,62)	RS1/16SS104J	
R 6056	(B,195,56)	RS1/16SS102J		R 6232	(B,127,59)	RS1/10SR472J	
R 6057	(B,194,54)	RS1/16SS473J		R 6233	(B,127,56)	RS1/10SR225J	
R 6058	(B,199,54)	RS1/16SS101J		R 6234	(B,120,58)	RS1/10SR220J	
R 6059	(B,196,53)	RS1/16SS102J		R 6235	(B,120,56)	RS1/10SR223J	
R 6060	(B,199,52)	RS1/16SS101J		R 6236	(B,120,53)	RS1/10SR224J	E
R 6061	(B,199,51)	RS1/16SS101J		R 6237	(B,120,51)	RS1/10SR182J	
R 6062	(B,194,50)	RS1/16SS101J		R 6250	(B,39,53)	RS1/16SS330J	
R 6063	(B,199,50)	RS1/16SS101J		R 6251	(B,46,55)	RS1/16SS471J	
R 6064	(B,193,45)	RS1/16SS101J		R 6252	(B,43,50)	RS1/16SS223J	
R 6065	(B,199,49)	RS1/16SS472J		R 6253	(B,41,53)	RS1/16SS472J	
R 6066	(B,196,49)	RS1/16SS472J		R 6260	(B,32,60)	RS1/16SS330J	
R 6067	(B,194,49)	RS1/16SS472J		R 6261	(B,35,64)	RS1/16SS471J	
R 6068	(B,193,49)	RS1/16SS472J		R 6262	(B,44,61)	RS1/16SS223J	
R 6069	(B,196,50)	RS1/16SS101J		R 6263	(B,35,62)	RS1/16SS472J	
R 6070	(B,197,54)	RS1/16SS472J		R 6302	(B,225,79)	RS1/4SA391J	F
R 6071	(B,188,67)	RS1/16SS472J		R 6303	(B,223,71)	RS1/16SS102J	
R 6072	(B,191,54)	RS1/16SS473J		R 6304	(B,210,79)	RS1/4SA821J	
R 6073	(B,193,56)	RS1/16SS473J		R 6305	(B,207,73)	RS1/16SS102J	

1

2

3

4

Circuit Symbol and No.**Part No.****Circuit Symbol and No.****Part No.**

R 6306	(B,216,79)	RS1/4SA152J	R 6455	(B,33,25)	RS1/16SS102J
R 6307	(B,214,71)	RS1/16SS102J			
R 6308	(B,213,79)	RS1/4SA182J	R 6456	(A,124,52) (CWT1052,CWT1055)	RS1/10SR392J
R 6309	(B,211,71)	RS1/16SS102J		(A,124,52) (CWT1053,CWT1056)	RS1/10SR152J
R 6310	(B,219,79)	RS1/4SA391J	R 6457	(A,145,53) (CWT1052,CWT1055)	RS1/10SR822J
				(A,145,53) (CWT1053,CWT1056)	RS1/10SR182J
R 6311	(B,217,71)	RS1/16SS102J	R 6458	(B,34,30)	RS1/10SR331J
R 6330	(B,143,19)	RS1/8SQ221J	R 6459	(B,33,31)	RS1/16SS102J
R 6331	(B,142,26)	RS1/4SA122J	R 6460	(A,63,53) (CWT1052,CWT1055)	RS1/10SR332J
R 6332	(B,142,22)	RS1/8SQ242J		(A,63,53) (CWT1053,CWT1056)	RS1/10SR152J
R 6333	(B,144,26)	RS1/4SA122J			
			R 6461	(A,104,52) (CWT1052,CWT1055)	RS1/10SR153J
R 6334	(B,170,44) (CWT1052,CWT1053)	RS1/8SQ122J		(A,104,52) (CWT1053,CWT1056)	RS1/10SR332J
R 6335	(B,172,37) (CWT1052,CWT1053)	RS1/4SA122J	R 6462	(B,29,42)	RS1/10SR331J
R 6336	(B,172,45) (CWT1052,CWT1053)	RS1/8SQ242J	R 6463	(B,28,43)	RS1/16SS102J
R 6337	(B,172,40) (CWT1052,CWT1053)	RS1/4SA122J	R 6464	(A,34,55) (CWT1052,CWT1055)	RS1/10SR272J
R 6338	(B,176,44) (CWT1052,CWT1053)	RS1/8SQ122J		(A,34,55) (CWT1053,CWT1056)	RS1/10SR152J
			R 6465	(A,31,55) (CWT1052,CWT1055)	RS1/10SR272J
R 6339	(B,178,37) (CWT1052,CWT1053)	RS1/4SA122J		(A,31,55) (CWT1053,CWT1056)	RS1/10SR152J
R 6340	(B,178,45) (CWT1052,CWT1053)	RS1/8SQ242J			
R 6341	(B,178,40) (CWT1052,CWT1053)	RS1/4SA122J	R 6466	(B,34,12)	RS1/10SR181J
R 6342	(B,156,33) (CWT1052,CWT1053)	RS1/4SA102J	R 6467	(B,33,13)	RS1/16SS102J
R 6343	(B,156,28) (CWT1052,CWT1053)	RS1/4SA202J	R 6468	(A,158,34) (CWT1052,CWT1055)	RS1/10SR682J
				(A,158,34) (CWT1053,CWT1056)	RS1/10SR122J
R 6344	(B,164,31) (CWT1052,CWT1053)	RS1/16SS103J	R 6469	(A,137,22) (CWT1052,CWT1055)	RS1/10SR682J
R 6345	(B,163,28) (CWT1052,CWT1053)	RS1/16SS473J		(A,137,22) (CWT1053,CWT1056)	RS1/10SR122J
R 6360	(B,115,11)	RS1/4SA471J	R 6470	(B,29,36)	RS1/10SR181J
R 6361	(B,116,13)	RS1/10SR102J			
R 6400	(B,234,90)	RS1/10SR181J	R 6471	(B,28,37)	RS1/16SS102J
			R 6472	(A,25,35) (CWT1052,CWT1055)	RS1/10SR222J
R 6401	(B,233,89)	RS1/16SS102J		(A,25,35) (CWT1053,CWT1056)	RS1/10SR821J
R 6402	(A,213,88) (CWT1052,CWT1055)	RS1/10SR822J	R 6473	(A,24,17) (CWT1052,CWT1055)	RS1/10SR562J
	(A,213,88) (CWT1053,CWT1056)	RS1/10SR821J		(A,24,17) (CWT1053,CWT1056)	RS1/10SR102J
R 6403	(A,187,88) (CWT1052,CWT1055)	RS1/10SR822J	R 6474	(B,36,27)	RS1/16SS3300D
	(A,187,88) (CWT1053,CWT1056)	RS1/10SR821J	R 6475	(B,41,22)	RS1/16SS5600D
R 6404	(B,48,98)	RS1/10SR271J			
R 6405	(B,49,98)	RS1/16SS102J	R 6476	(B,47,22)	RS1/16SS271J
			R 6477	(B,47,23)	RS1/16SS223J
R 6406	(A,88,88) (CWT1052,CWT1055)	RS1/10SR562J	R 6478	(B,44,21)	RS1/16SS472J
	(A,88,88) (CWT1053,CWT1056)	RS1/10SR152J	R 6479	(B,55,26)	RS1/10SR271J
R 6407	(A,62,88) (CWT1052,CWT1055)	RS1/10SR562J	R 6480	(B,52,27)	RS1/16SS102J
	(A,62,88) (CWT1053,CWT1056)	RS1/10SR152J			
R 6408	(B,228,94)	RS1/10SR181J	R 6481	(B,55,24)	RS1/10SR331J
R 6409	(B,229,94)	RS1/16SS102J	R 6482	(A,84,53) (CWT1052,CWT1055)	RS1/10SR222J
R 6410	(B,226,109)	RS1/10SR681J		(A,84,53) (CWT1053,CWT1056)	RS1/10SR122J
			R 6700	(B,42,85)	RS1/16SS102J
R 6411	(B,61,112)	RS1/10SR561J	R 6701	(B,40,85)	RS1/16SS102J
R 6412	(B,44,98)	RS1/10SR181J	R 6702	(B,39,85)	RS1/16SS102J
R 6413	(B,46,98)	RS1/16SS102J			
R 6414	(B,44,111)	RS1/10SR222J	R 6703	(B,37,85)	RS1/16SS102J
R 6415	(A,221,121)(CWT1052,CWT1055)	RS1/10SR102J	R 6704	(B,50,82)	RS1/16SS102J
	(A,221,121)(CWT1053,CWT1056)	RS1/10SR561J	R 6705	(B,48,83)	RS1/16SS102J
			R 6706	(B,47,83)	RS1/16SS102J
R 6416	(B,40,98)	RS1/10SR181J	R 6707	(B,46,83)	RS1/16SS102J
R 6417	(B,42,98)	RS1/16SS102J			
R 6418	(B,41,109)	RS1/10SR222J	R 6708	(B,44,83)	RS1/16SS102J
R 6419	(B,32,86)	RS1/10SR222J	R 6709	(B,43,85)	RS1/16SS102J
R 6420	(B,233,99)	RS1/10SR181J	R 6710	(B,48,74)	RS1/16SS393J
			R 6711	(B,44,65)	RS1/16SS561J
R 6421	(B,234,99)	RS1/16SS102J	R 6714	(B,42,68)	RS1/16SS121J
R 6423	(A,59,122) (CWT1052,CWT1055)	RS1/10SR681J			
	(A,59,122) (CWT1053,CWT1056)	RS1/10SR561J	R 6715	(B,41,68)	RS1/16SS121J
R 6424	(B,239,99)	RS1/10SR181J	R 6716	(B,39,68)	RS1/16SS121J
R 6425	(B,241,99)	RS1/16SS102J	R 6717	(B,38,68)	RS1/16SS121J
R 6450	(B,34,18)	RS1/10SR331J	R 6800	(B,94,25)	RS1/16SS2201D
			R 6801	(B,102,40)	RS1/16SS221J
R 6451	(B,33,19)	RS1/16SS102J			
R 6452	(A,164,49) (CWT1052,CWT1055)	RS1/10SR272J	R 6802	(B,96,42)	RS1/16SS102J
	(A,164,49) (CWT1053,CWT1056)	RS1/10SR152J	R 6803	(B,136,23)	RS1/16SS473J
R 6453	(A,177,49) (CWT1052,CWT1055)	RS1/10SR272J	R 6804	(B,106,41)	RS1/16SS103J
	(A,177,49) (CWT1053,CWT1056)	RS1/10SR152J	R 6805	(B,101,41)	RS1/16SS103J
R 6454	(B,34,24)	RS1/10SR271J	R 6806	(B,96,46)	RS1/16SS103J

1

2

3

4

5		6		7		8	
<u>Circuit Symbol and No.</u>		<u>Part No.</u>		<u>Circuit Symbol and No.</u>		<u>Part No.</u>	
R 6807	(B,136,26)	RS1/16SS473J		C 6452	(B,43,28)	CKSRYB104K25	
R 6808	(B,101,47)	RS1/10SR223J		C 6453	(B,45,28)	CKSRYB104K25	
R 6809	(B,100,47)	RS1/10SR223J		C 6705	(B,43,83)	CCSSCH101J50	A
R 6810	(B,97,52)	RS1/4SA2R0J		C 6706	(B,42,83)	CCSSCH101J50	
R 6811	(B,95,52)	RS1/4SA2R0J		C 6707	(B,40,83)	CCSSCH101J50	
				C 6708	(B,39,83)	CCSSCH101J50	
R 6813	(B,93,29)	RS1/4SA242J		C 6709	(B,37,83)	CCSSCH101J50	
R 6814	(B,104,49)	RS1/16SS103J					
R 6850	(B,61,28)	RS1/4SA331J		C 6710	(B,48,75)	CKSSYB102K50	
R 6851	(B,77,29)	RS1/16SS101J		C 6711	(B,44,70)	CKSSYB102K50	
R 6852	(B,74,29)	RS1/16SS101J		C 6712	(B,45,70)	CKSSYB104K16	
				C 6713	(B,38,70)	CCSSCH101J50	
R 6853	(B,71,29)	RS1/16SS101J		C 6714	(B,39,70)	CCSSCH101J50	
R 6854	(B,69,27)	RS1/16SS101J					
R 6855	(B,65,29)	RS1/16SS473J		C 6715	(B,41,70)	CCSSCH101J50	
R 6857	(B,68,24)	RS1/10SR472J		C 6716	(B,46,71)	CKSSYB104K16	B
				C 6717	(B,42,70)	CCSSCH101J50	
				C 6718	(B,51,74)	CKSSYB104K16	
				C 6800	(B,123,42)	CEVW100M50	
CAPACITORS							
C 6000	(B,200,75)	CKSRYB105K16		C 6801	(B,107,13) 220 uF/4 V	CCH2019	
C 6002	(B,202,70) Capacitor	CEVW470M16		C 6802	(B,118,42)	CKSRYB104K50	
C 6004	(B,219,50)	CKSSYB104K10		C 6803	(B,101,38)	CKSRYB104K50	
C 6005	(B,207,68)	CKSSYB102K50		C 6804	(B,100,50)	CKSRYB105K16	
C 6006	(B,207,69)	CKSRYB105K16		C 6805	(B,92,25)	CKSSYB104K10	
C 6007	(B,207,67)	CKSSYB104K10					
C 6130	(B,70,51)	CKSRYB104K25		C 6806	(B,91,28)	CKSRYB104K50	
C 6150	(B,173,60)	CKSSYB102K50		C 6807	(B,104,47)	CKSRYB104K50	
C 6160	(B,170,63)	CKSRYB105K10		C 6850	(B,77,28)	CCSSCH101J50	C
C 6161	(B,168,62)	CKSRYB105K10		C 6851	(B,74,28)	CCSSCH101J50	
				C 6852	(B,71,28)	CCSSCH101J50	
C 6172	(B,170,53)	CCSSCH101J50					
C 6182	(B,163,44)	CKSSYB104K16		C 6853	(B,70,26)	CCSSCH101J50	
C 6200	(B,235,75)	CKSSYB104K16		C 6854	(B,92,16)	CKSRYB104K25	
C 6210	(B,112,71)	CKSRYB103K50		C 6855	(B,61,26)	CKSRYB104K25	
C 6221	(B,189,36)	CKSSYB472K25		C 6856	(B,66,27)	CKSRYB104K25	
C 6222	(B,192,41)	CKSRYB105K16					
C 6223	(B,193,43) 22 uF	CCG1254		Miscellaneous Parts List			
C 6230	(B,102,58) 22 uF	CCG1254		M 1	Motor Unit(SPDL)	CXE3767	
C 6231	(B,104,57)	CKSRYB105K10		M 2	Motor Unit(LOAD/CRG)	CXC4026	
C 6232	(B,131,59)	CKSYB475K16			Pickup Unit(P10.5)(Service)	CXX1942	
					Fan Motor	CXM1370	
C 6233	(B,120,59)	CCSSCH221J50					
C 6234	(B,128,56)	CKSRYB104K50					
C 6235	(B,123,50)	CKSYB225K25					
C 6236	(B,118,52)	CKSRYB473K50					
C 6237	(B,115,52)	CKSRYB473K50					
C 6251	(B,43,54)	CKSSYB102K50					
C 6252	(B,44,49)	CKSRYB104K25					
C 6253	(B,46,45)	CKSRYB473K50					
C 6254	(B,46,48)	CKSRYB473K50					
C 6255	(B,46,50)	CKSRYB104K25					
C 6261	(B,32,59)	CKSSYB104K10					
C 6262	(B,45,61)	CKSRYB473K50					
C 6263	(B,44,63)	CKSRYB473K50					
C 6330	(B,144,22)	CKSRYB473K50					
C 6331	(B,172,43)(CWT1052,CWT1053)	CKSRYB473K50					
C 6332	(B,178,43)(CWT1052,CWT1053)	CKSRYB473K50					
C 6333	(B,160,37)	CKSRYB104K50					
C 6334	(B,160,41)	CKSRYB104K50					
C 6360	(B,116,14)	CKSRYB104K25					
C 6361	(B,114,14)	CKSRYB104K25					
C 6400	(B,55,28)	CKSRYB473K50					
C 6450	(B,37,29)	CKSRYB473K50					
C 6451	(B,46,25)	CKSRYB472K50					