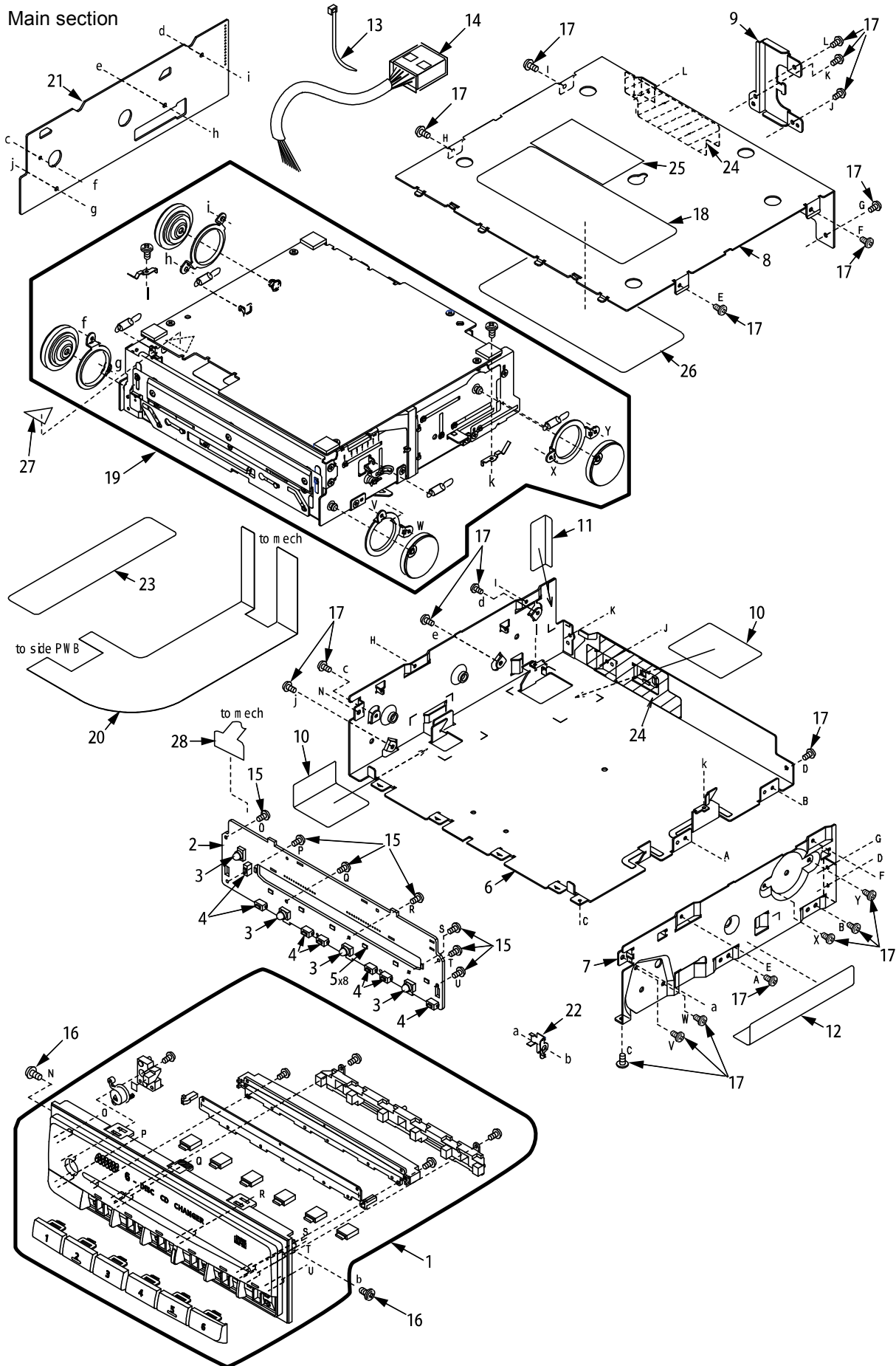


EXPLODED VIEW • PARTS LIST

Main section



NO.	PART NO.	DESCRIPTION	Q'TY
1	940-7889-20 940-7889-21	ESCUTCHEON ASSY (PN-2302M-C/M-F) ESCUTCHEON (PN-2302N-A)	1
2	039-1484-00	ESCUTCHEON PWB (WITHOUT COMPORNENT)	1
3	017-0433-04	PILOT LAMP	4
4	013-6302-52	SWITCH	7
5	001-7045-00	DIODE	8
6	331-1786-05	LOWER CASE	1
7	305-0287-01	SIDE PLATE	1
8	310-1693-02	UPPER CASE	1
9	331-2777-00	HOLDER	1
10	347-6126-00	SHADE-A(33×42)	2
11	347-6127-02	SHADE-B(16.5×33)	1
12	347-6128-00	SHADE-C(30×79)	1
13	335-0833-05	LEAD HOLDER	1
14	854-7607-01 854-7607-02 854-7607-00	EXTENSION LEAD (PN-2302M-C) EXTENSION LEAD (PN-2302M-F) EXTENSION LEAD (PN-2302N-A)	1

NO.	PART NO.	DESCRIPTION	Q'TY
15	716-0872-00	PAD SREW(M1.7×5)	7
16	716-1611-00	MACHINE SCREW(M2.6×4)	2
17	716-1855-00	SCREW(M2×3)	20
18	286-9086-13 286-9086-16 286-9086-08	SETPLATE(PN-2302M-C) SETPLATE(PN-2302M-F) SETPLATE(PN-2302N-A)	1
19	-----	CD MECHANISM (017200/017000-929)	1
20	039-1487-00	FPC(MECH-SIDE)	1
21	039-1486-00	SIDE PWB (WITHOUT COMPORNENT)	1
22	331-2799-00	EARTH PLATE	1
23	347-6260-00	PROTECTOR	1
24	347-6227-02	PROTECTOR	2
25	285-1328-00	GUIDE LABEL(LASER) (PN-2302M-C/M-F)	1
26	285-1340-00	GUIDE LABEL(CAUTION) (PN-2302M-C/M-F)	1
27	285-1426-00	GUIDE LABEL (PN-2302M-C/M-F)	1
28	039-1483-00	FPC(ES-MECH)	1

NO.	PART NO.	DESCRIPTION	Q'TY
46	345-8372-00	FRONT SHEET	1
47	345-8373-00	SIDE SHEET	1
48	347-6238-00	PROTECTOR	1
49	347-6247-00	HL-SPRING SHEET	1
50	620-0843-02	MODE PLATE	1
51	620-0844-01	DOOR OPEN LINK	1
52	620-0845-00	S-HOLDE PLATE	1
53	620-0846-00	M-SENSOR PLATE	1
54	620-0850-00	DOOR G-PLATE	1
55	620-0851-00	SIDE G PLATE	1
56	620-0852-02	M-PLATE COVER	1
57	620-0853-00	D-HOLDER F	2
58	620-0854-00	D-HOLDER R	2
59	620-0856-00	HOLD GEAR F	1
60	620-0858-02	STAGE P-PLATE B	1
61	620-0859-02	STOCK ARM	1
62	620-0860-00	H-HOLDER LR	1
63	620-0861-00	H-HOLDER LL	1
64	620-0914-01	D/U SP-PLATE	1
65	620-0924-00	S-HOLD PLATE L	1
66	620-0962-00	SENSOR PLATE	1
67	620-0966-00	HOLD HUNG PLATE	1
68	SMA-174-100	LOADING MOTOR ASSY	1
69	621-0465-01	MODE GEAR A	1
70	621-0466-01	MODE GEAR B	1
71	621-0467-01	MODE GEAR C	1
72	621-0468-01	MODE GEAR D	2
73	621-0469-00	EJECT ARM U	1
74	621-0470-00	MODE GEAR E	1
75	621-0471-00	EJECT ARM L	1
76	621-0476-01	HOL-GEAR B	1
77	621-0477-00	HOL-GEAR C	1
78	621-0478-00	HOL-GEAR D	1
79	074-1048-22	OUTLET SOCKET(22P)	2
80	621-0480-01	STAGE GEAR A	1
81	621-0481-01	STAGE GEAR B	1
82	621-0482-01	STAGE GEAR C	1
83	621-0483-00	STAGE GEAR D	1
84	621-0484-01	STAGE GEAR E	1
85	621-0487-01	STAGE GEAR J	1
86	621-0488-00	STAGE GEAR I	1
87	621-0489-00	STAGE GEAR K	3
88	621-0490-00	STAGE GEAR L	1
89	621-0491-00	STAGE GEAR M	2
90	621-0492-00	R-HOLDER U	2
91	621-0493-01	DISC GUIDE R	1
92	621-0494-03	DISC GUIDE L	1
93	621-0495-03	U-DISC GUIDE	1
94	621-0496-01	L-DISC GUIDE	1
95	621-0497-01	LOWER ROLLER	2
96	621-0498-01	D-GUIDE ROLLER	2

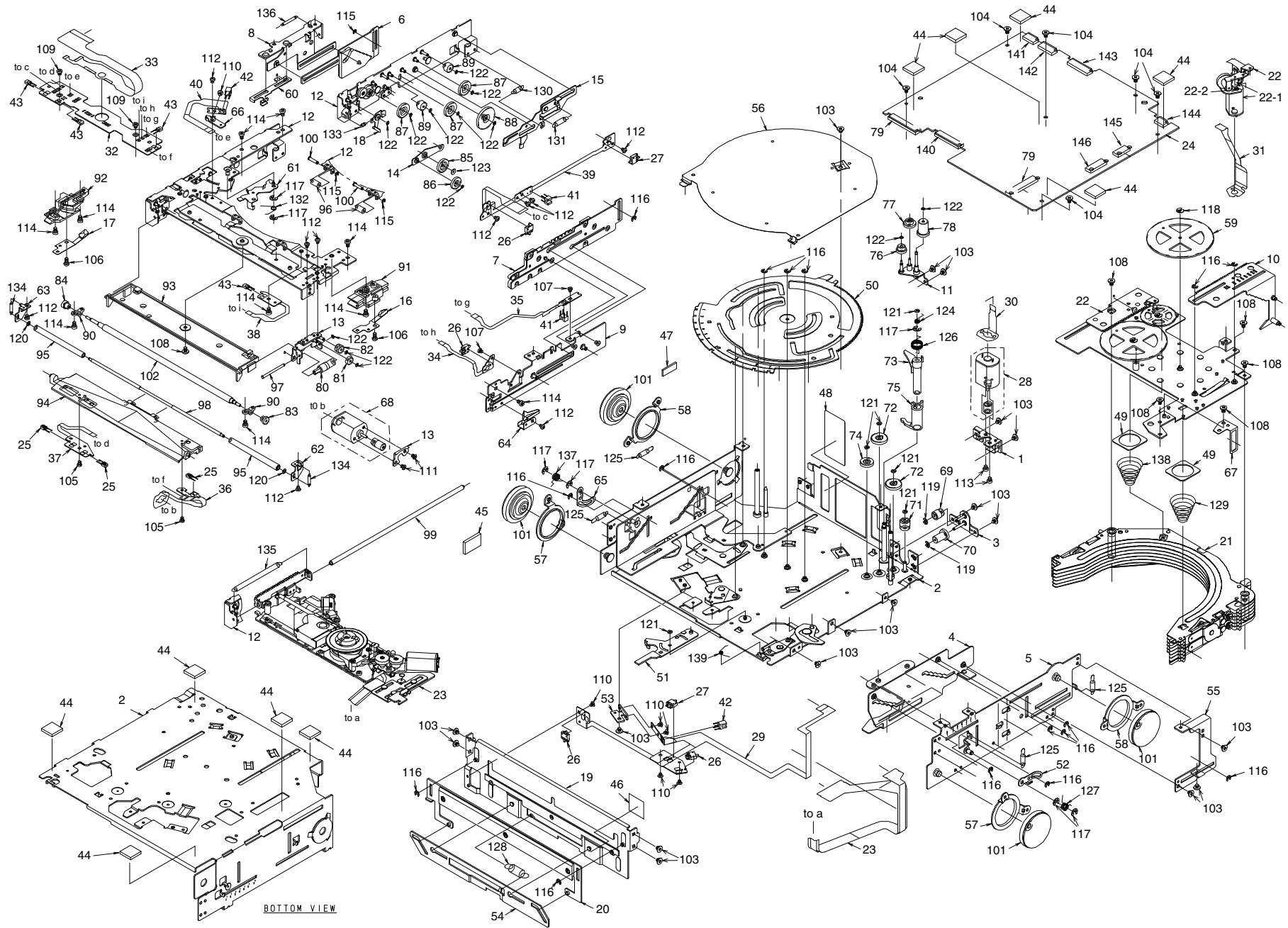
NO.	PART NO.	DESCRIPTION	Q'TY
97	622-1417-00	S-M-PLATA PIN A	1
98	622-1419-00	L-ROLLER SHAFT	1
99	622-1420-00	DU-SLIDE SHAFT	1
100	622-1421-00	G-ROLLER SHAFT	2
101	629-0072-00	DAMPER	4
102	629-0073-01	LOADING ROLLER	1
103	716-1850-00	SCREW(M2×2)	18
104	716-1851-00	SCREW(M2×3)	6
105	716-1852-00	SCREW(M1.7×2.5)	2
106	716-1853-00	SCREW(M2×4)	2
107	716-1854-00	SCREW(M1.7×1.6)	2
108	716-1855-00	SCREW(M2×3)	6
109	716-1856-00	SCREW(M2×2)	2
110	716-1859-00	SCREW(M1.7×2)	5
111	738-2020-17	PRECISION SCREW(M2.0×2)	2
112	739-1720-17	PRECISION SCREW(M1.7×2)	10
113	739-2020-17	PRECISION SCREW(M2.0×2)	2
114	739-2030-17	PRECISION SCREW(M2.0×3)	10
115	743-1200-20	E-RING	3
116	743-1500-20	E-RING	16
117	743-2000-20	E-RING	7
118	744-0031-10	E-RING	1
119	744-0043-00	E-RING	2
120	746-0628-00	WASHER	2
121	746-0761-00	WASHER	6
122	746-0872-00	WASHER	13
123	746-0913-00	WASHER	1
124	750-3377-00	E-ARM U SPRING	1
125	750-3378-01	D-SPRING	4
126	750-3379-00	E-ARM L SPRING	1
127	750-3380-00	S-HOLD SPRING	1
128	750-3381-00	DOOR G-SPRING	1
129	750-3385-00	HOL-SPRING	1
130	750-3386-00	STAGE SPRING A	1
131	750-3387-00	STAGE SPRING B	1
132	750-3388-00	S-ARM SPRING	1
133	750-3389-00	SW LINK SPRING	1
134	750-3390-00	L-ROLLER SPRING	2
135	750-3391-00	D-BASE SPRING	1
136	750-3392-00	STAGE P-SPRING C	1
137	750-3401-00	S-HOLD SPRING L	1
138	750-3402-00	H-SPRING B	1
139	750-3403-00	LOOK SPRING	1
140	074-1048-18	OUTLET SOCKET(18P)	1
141	074-1049-06	OUTLET SOCKET(6P)	1
142	074-1049-09	OUTLET SOCKET(9P)	1
143	074-1049-15	OUTLET SOCKET(15P)	1
144	074-1048-04	OUTLET SOCKET(4P)	1
145	074-1049-07	OUTLET SOCKET(7P)	1
146	074-1049-11	OUTLET SOCKET(11P)	1

CD mechanism section

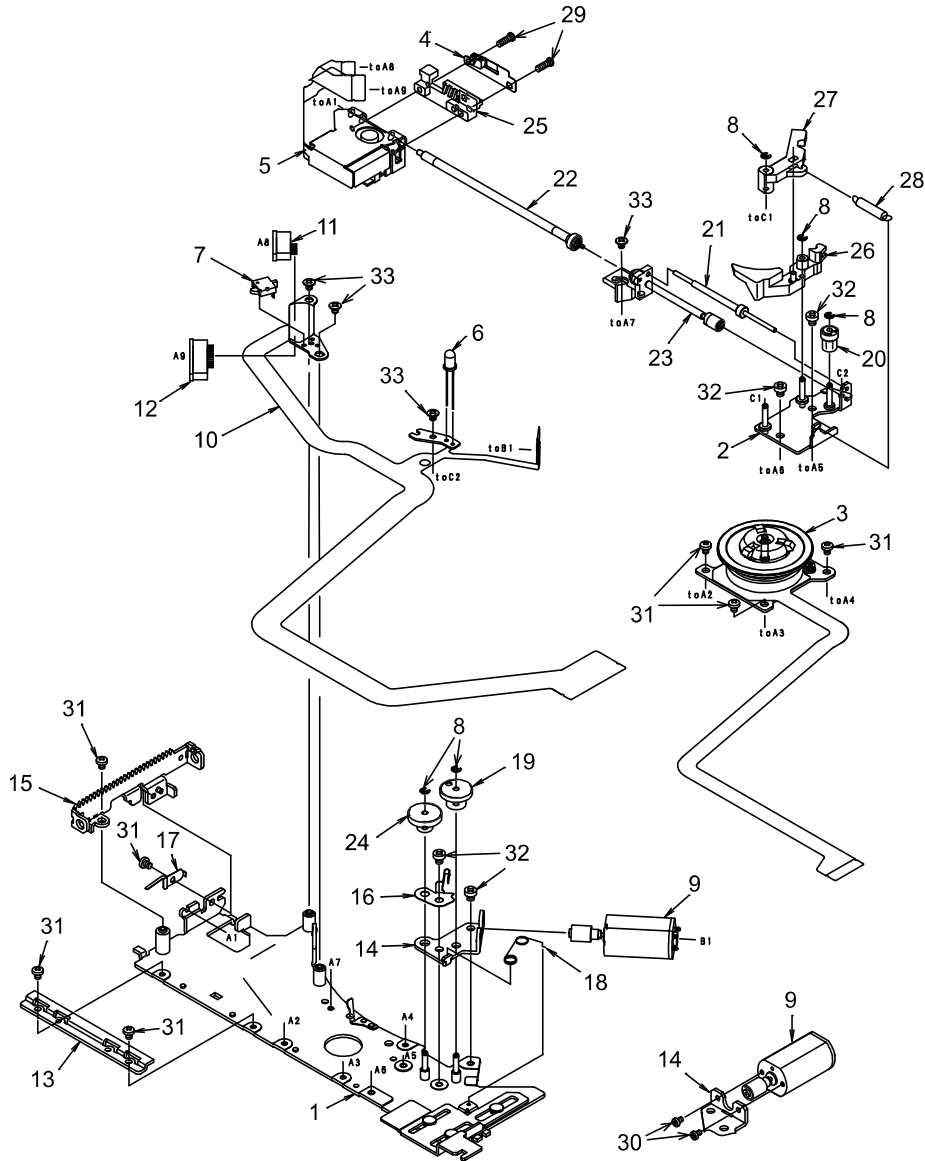
NO.	PART NO.	DESCRIPTION	Q'TY
1	966-0506-00	MOTOR PLATE ASSY	1
2	966-0507-04	LOWER CHASSIS ASSY	1
3	966-0508-02	GEAR PLATE ASSY	1
4	966-0509-02	SIDE PLATE ASSY R	1
5	966-0511-01	SIDE PANEL ASSY	1
6	966-0517-02	D-SEL PLATE L-ASSY	1
7	966-0518-02	D-SEL PLATE R-ASSY	1
8	966-0519-01	SL-GD-PLATE L-ASSY	1
9	966-0520-01	SL-GD-PLATE R-ASSY	1
10	966-0522-00	SL-SH-PLATE R-ASSY	1
11	966-0525-01	H-GEAR P-B-ASSY	1
12	966-0526-04	STAGE PLATE ASSY	1
13	966-0527-00	STAGE M-PLATE ASSY	1
14	966-0528-01	STAGE I-PLATE ASSY	1
15	966-0529-00	STAGE P-PLATE ASSY	1
16	966-0530-02	DP-PLATE R-ASSY	1
17	966-0531-03	DP-PLATE L-ASSY	1
18	966-0532-01	SW-LINK ASSY	1
19	966-0543-02	FRONT PLATE ASSY	1
20	966-0544-03	DOOR PLATE ASSY	1
21	966-0557-04	DISC HOLDER	1
22	966-0565-00	T-PLATE U-ASSY	1
22-1	SMA-172-100	SHAVE MOTOR ASSY	1
22-2	716-1881-00	MOTOR SCREW(M1.4×1.8)	2
23	968-0170-02	DRIVE UNIT	1
24	039-1488-00 039-1570-00	MAIN PWB(PN-2302M-C/F) (WITHOUT COMPONENT) MAIN PWB(PN-2302N-A) (WITHOUT COMPONENT)	1

NO.	PART NO.	DESCRIPTION	Q'TY
25	001-7042-00	LED GL4800	3
26	013-7408-00	SWITCH(DET MH1)	4
27	013-7410-00	SWITCH(DET MH3)	2
28	SMA-173-100	U/D MOTOR ASSY	1
29	039-1441-00	MODE FPC (WITHOUT COMPONENT)	1
30	039-1442-00	U/D MOTOR FPC (WITHOUT COMPONENT)	1
31	039-1443-01	SHAVE MOTOR FPC (WITHOUT COMPONENT)	1
32	039-1444-00	STAGE CONNECT PWB (WITHOUT COMPONENT)	1
33	039-1445-01	STAGE FPC (WITHOUT COMPONENT)	1
34	039-1446-00	SELECT SW FPC (WITHOUT COMPONENT)	1
35	039-1447-00	SELECT PI FPC (WITHOUT COMPONENT)	1
36	039-1448-00	STAGE LED FPC R (WITHOUT COMPONENT)	1
37	039-1449-00	STAGE LED FPC L (WITHOUT COMPONENT)	1
38	039-1450-00	STAGE PT FPC R (WITHOUT COMPONENT)	1
39	039-1451-01	STAGE LEFT FPC (WITHOUT COMPONENT)	1
40	039-1556-00	STOCK PI FPC (WITHOUT COMPONENT)	1
41	051-5806-01	IC GP1S93	2
42	051-5806-02	IC GP1S95	2
43	060-0252-01	PHOTO TR PT-4850F	4
44	345-8329-00	CUSHION RUBBER	10
45	345-8364-00	SUPPORT RUBBER	1

CD mechanism section



Drive unit section : 968-0170-02



NO.	PART NO.	DESCRIPTION	Q'TY
1	966-0533-01	DRIVE BASE ASSY	1
2	966-0534-01	CH ARM BASE ASSY	1
3	SMA-175-100	SPINDLE MOTOR ASSY	1
4	966-0536-01	LS-HOLDER SP ASSY	1
5	969-0007-02	PICK UP UNIT	1
6	001-0563-00	LED GL380	1
7	013-7409-00	DETECTOR SWITCH	1
8	744-0043-00	E-RING	5
9	SMA-176-100	THREAD MOTOR ASSY	1
10	039-1452-00	DRIVE UNIT FPC (WITHOUT COMPONENT)	1
11	074-1048-56	OUTLET SOCKET(6P)	1
12	074-1049-62	OUTLET SOCKET(12P)	1
13	620-0863-00	PICK UP GUIDE RAIL	1
14	620-0864-00	THREAD MOTOR BRACKET	1
15	620-0866-02	RACK PLATE	1
16	620-0875-01	THRUST PLATE	1
17	620-0957-00	SP-PLATE	1

NO.	PART NO.	DESCRIPTION	Q'TY
18	750-3397-01	DRIVE UNIT SPRING	1
19	621-0500-01	THREAD GEAR A	1
20	621-0501-02	THREAD GEAR B	1
21	622-1423-00	CH SHAFT	1
22	HBS-490-100	LEAD SCREW SUB ASSY	1
23	HBS-491-100	CH SHAFT SUB ASSY	1
24	621-0510-01	THREAD GEAR E	1
25	621-0506-02	SCREW HOLDER	1
26	621-0507-01	CH-ARM A	1
27	621-0508-00	CH-ARM B	1
28	750-3395-01	CH ARM SPRING	1
29	716-1860-00	IT SCREW(M1.7×5)	2
30	739-1420-17	PRECISION SCREW(M1.4×2)	2
31	739-1720-17	PRECISION SCREW(M1.7×2)	7
32	739-2020-17	PRECISION SCREW(M2.0×2)	4
33	716-1859-00	IT SCREW(M1.7×2)	4

ELECTRICAL PARTS LIST

Note) Several different parts of the same reference number are alternative parts.

Main PWB section(B1)

One of those parts is used in the set.

REF No.	PART No.	DESCRIPTION	REF No.	PART No.	DESCRIPTION	REF No.	PART No.	DESCRIPTION
C11	163-1073-31	16V100 μ F	C402	178-2212-78	220pF	Q11	193-1257-60	2SD1257DS-R,Q,P
C12	163-2273-25	10V 220 μ F	C405	178-2212-78	220pF	Q12	125-0014-02	DTA114EK
C13	178-1032-78	0.01 μ F	C406	178-2212-78	220pF	Q13	125-2004-02	RN1402
C14	042-0595-58	6.3V100 μ F	C408	178-1032-78	0.01 μ F	Q14	193-1758-00	2SD1758TK-P,Q,R
C15	178-1032-78	0.01 μ F	C409	178-1032-78	0.01 μ F	Q15	125-0014-02	DTA114EK
C16	163-1073-31	16V100 μ F	C410	042-0595-58	6.3V100 μ F	Q16	125-2004-02	RN1402
C17	163-1073-31	16V100 μ F	C411	163-1073-31	16V100 μ F	Q101	101-1188-50	2SB1188PQR
C18	178-1042-78	0.1 μ F	C412	178-1042-78	0.1 μ F	Q701	125-0002-02	RN2402
C19	178-1042-78	0.1 μ F	C430	178-1042-78	0.1 μ F	Q702	125-0002-02	RN2402
C20	178-4742-78	0.47 μ F	C501	178-1042-78	0.1 μ F	Q703	125-0002-02	RN2402
C21	178-1022-78	1000pF	C502	178-1042-78	0.1 μ F	Q704	125-0014-02	DTA114EK
C22	178-1022-78	1000pF	C503	178-1042-78	0.1 μ F	Q705	125-2004-02	RN1402
C23	178-1022-78	1000pF	C504	178-1032-78	0.01 μ F	Q706	125-2004-02	RN1402
C30	176-1011-00	100pF CH	C505	163-1073-31	16V100 μ F	Q707	103-2118-00	2SD2118
C31	176-1011-00	100pF CH	C601	178-1042-78	0.1 μ F	Q708	125-2004-02	RN1402
C32	176-1011-00	100pF CH	C602	178-1042-78	0.1 μ F	Q709	125-2004-02	RN1402
C33	178-1022-78	1000pF	C603	178-1042-78	0.1 μ F	Q710	125-0002-02	RN2402
C34	178-1022-78	1000pF	C701	178-1032-78	0.01 μ F	R11	032-0145-60	1/2W 220 Ω
C35	178-1022-78	1000pF	C702	178-3332-78	0.033 μ F	R12	117-1211-10	1/10W 120 Ω
C36	178-1022-78	1000pF	C703	042-0595-81	50V3.3 μ F	R13	032-0145-54	1/2W 10 Ω
C37	178-1022-78	1000pF	C704	178-1032-78	0.01 μ F	R101	117-1011-10	1/10W 100 Ω
C38	178-1022-78	1000pF	C705	178-1042-78	0.1 μ F	R102	117-4721-10	1/10W 4.7k Ω
C39	178-1022-78	1000pF	C707	178-1042-78	0.1 μ F	R103	117-2231-10	1/10W 22k Ω
C40	178-1022-78	1000pF	C710	178-1042-78	0.1 μ F	R104	117-3941-10	1/10W 390k Ω
C41	176-1011-00	100pF CH	C711	163-1063-30	16V10 μ F	R105	117-3941-10	1/10W 390k Ω
C101	178-1042-78	0.1 μ F	C712	163-4753-50	35V4.7 μ F	R106	117-3051-10	1/10W 3M Ω
C102	042-0416-02	10V10 μ F	C713	163-4753-50	35V4.7 μ F	R107	117-2451-10	1/10W 2.4M Ω
C103	178-1032-78	0.01 μ F	C730	178-1042-78	0.1 μ F	R108	117-2201-10	1/10W 22 Ω
C104	042-0595-58	6.3V100 μ F	D11	001-4303-45	MA5082H	R109	117-6821-10	1/10W 6.8k Ω
C105	178-1032-78	0.01 μ F	D12	001-0528-31	MA8056-L	R110	117-1031-10	1/10W 10k Ω
C106	042-0595-58	6.3V100 μ F	D101	001-0516-00	MA111	R111	117-1331-15	1/10W 13k Ω
C107	178-1032-78	0.01 μ F	D601	001-0528-32	MA8056-M	R112	117-2431-10	1/10W 24k Ω
C108	176-1501-00	15pF CH	D602	001-0528-32	MA8056-M	R113	117-5601-10	1/10W 56 Ω
C109	042-0595-60	10V33 μ F	D603	001-0528-35	MA8062-M	R114	117-5601-10	1/10W 56 Ω
C110	178-1032-78	0.01 μ F	D701	001-0529-21	MA8039-H	R115	117-2721-10	1/10W 2.7k Ω
C201	178-1042-78	0.1 μ F	D702	001-0528-35	MA8062-M	R116	117-2721-10	1/10W 2.7k Ω
C202	178-4742-78	0.47 μ F	D703	001-0516-00	MA111	R201	117-1041-10	1/10W 100k Ω
C203	178-1032-78	0.01 μ F	IC11	051-3225-00	LM2936M	R202	117-3631-10	1/10W 36k Ω
C204	178-4732-78	0.047 μ F	IC101	051-5706-90	CXA1821M	R203	117-1241-10	1/10W 120k Ω
C205	178-1522-78	1500pF	IC201	051-6318-00	CXD2548R	R204	117-3631-10	1/10W 36k Ω
C206	178-1032-78	0.01 μ F	IC301	051-6346-00	CXD2512AR	R205	117-1051-10	1/10W 1M Ω
C207	178-1042-78	0.1 μ F	IC302	051-9316-00	MN4116400CTT-06	R206	117-3321-10	1/10W 3.3k Ω
C208	178-2212-78	220pF	IC302	051-9316-50	KM44C4000CS-6	R207	117-1031-10	1/10W 10k Ω
C209	178-1032-78	0.01 μ F	IC302	051-9316-51	KM44C4000DS-6	R208	117-1051-10	1/10W 1M Ω
C210	178-1042-78	0.1 μ F	IC401	051-6043-08	BA5929FPE2	R209	117-1031-10	1/10W 10k Ω
C211	178-2212-78	220pF	IC501	051-6040-08	BA6849FP-YE2	R210	117-4741-10	1/10W 470k Ω
C212	178-1032-78	0.01 μ F	IC601	051-6044-08	BA6919FP-YE2	R211	117-1041-10	1/10W 100k Ω
C213	176-1007-00	10pF CH	IC602	051-6044-08	BA6919FP-YE2	R212	117-6821-10	1/10W 6.8k Ω
C214	178-4742-78	0.47 μ F	IC603	051-6044-08	BA6919FP-YE2	R213	117-3331-10	1/10W 33k Ω
C215	178-4722-78	4700pF	IC701	051-0869-55	NJM2103M	R214	117-4731-10	1/10W 47k Ω
C216	178-1032-78	0.01 μ F	IC702	052-5034-00	μ PD78078GC-A13	R215	117-1041-10	1/10W 100k Ω
C217	178-1032-78	0.01 μ F	(EU)		-8EU(MC/MF)	R216	117-4711-10	1/10W 470 Ω
C218	176-1511-00	150pF CH	IC702	052-5034-10	μ PD78078GC-A14	R217	117-1231-10	1/10W 12k Ω
C219	176-1511-00	150pF CH	(USA)		-8EU(NA)	R218	117-1231-10	1/10W 12k Ω
C220	178-1042-78	0.1 μ F	IC703	051-1375-35	NM93C46TEM8	R219	117-1231-10	1/10W 12k Ω
C221	178-1032-78	0.01 μ F	J11	074-1049-09	SOCKET(9P)	R220	117-1231-10	1/10W 12k Ω
C222	176-1501-00	15pF CH	J12	074-1049-15	SOCKET(15P)	R221	117-1231-10	1/10W 12k Ω
C223	176-1501-00	15pF CH	J101	074-1048-22	SOCKET(22P)	R222	117-1231-10	1/10W 12k Ω
C224	178-6812-78	680pF	J501	074-1049-11	SOCKET(11P)	R230	117-1211-10	1/10W 120 Ω
C225	178-6812-78	680pF	J601	074-1048-04	SOCKET(4P)	R231	117-1211-10	1/10W 120 Ω
C226	178-4732-78	0.047 μ F	J602	074-1049-06	SOCKET(6P)	R401	117-3931-10	1/10W 39k Ω
C227	042-0595-58	6.3V100 μ F	J701	074-1049-07	SOCKET(7P)	R402	117-3931-10	1/10W 39k Ω
C228	178-4732-78	0.047 μ F	J702	074-1048-18	SOCKET(18P)	R404	117-6831-10	1/10W 68k Ω
C229	178-1042-78	0.1 μ F	J703	074-1048-22	SOCKET(22P)	R405	117-6831-10	1/10W 68k Ω
C236	176-5601-00	56pF CH	L12	010-3039-52	NLC453232T-1R5K	R407	117-3931-10	1/10W 39k Ω
C237	176-5601-00	56pF CH	L13	010-3039-52	NLC453232T-1R5K	R408	117-3931-10	1/10W 39k Ω
C238	178-1022-78	1000pF	L101	010-2155-93	10 μ H	R409	117-6831-10	1/10W 68k Ω
C301	178-4742-78	0.47 μ F	L202	010-2198-52	3.3 μ H	R410	117-6831-10	1/10W 68k Ω
C302	178-1042-78	0.1 μ F	L401	010-3039-52	NLC453232T-1R5K	R411	117-8221-10	1/10W 8.2k Ω
C303	178-3322-78	3300pF	L501	010-2275-52	3.3 μ H	R412	117-8221-10	1/10W 8.2k Ω
C401	178-2212-78	220pF	L502	010-3039-52	NLC453232T-1R5K	R413	117-3931-10	1/10W 39k Ω

REF No.	PART No.	DESCRIPTION	REF No.	PART No.	DESCRIPTION	REF No.	PART No.	DESCRIPTION
R414	117-3931-10	1/10W 39kΩ	R711	117-1041-10	1/10W 100kΩ	R742	117-4731-10	1/10W 47kΩ
R501	117-2711-10	1/10W 270Ω	R712	117-1041-10	1/10W 100kΩ	R743	117-4721-10	1/10W 4.7kΩ
R502	117-1511-10	1/10W 150Ω	R713	117-1041-10	1/10W 100kΩ	R744	117-1041-10	1/10W 100kΩ
R503	117-1811-10	1/10W 180Ω	R714	117-1041-10	1/10W 100kΩ	R745	117-4721-10	1/10W 4.7kΩ
R505	032-0104-70	1/4W 1Ω	R715	117-4731-10	1/10W 47kΩ	R746	117-4731-10	1/10W 47kΩ
R506	117-8231-10	1/10W 82kΩ	R717	117-2211-10	1/10W 220Ω	R747	117-2231-10	1/10W 22kΩ
R507	117-1031-10	1/10W 10kΩ	R718	117-4731-10	1/10W 47kΩ	R748	117-4721-10	1/10W 4.7kΩ
R601	117-1021-10	1/10W 1kΩ	R719	117-4731-10	1/10W 47kΩ	R749	117-4731-10	1/10W 47kΩ
R602	117-1021-10	1/10W 1kΩ	R720	117-1031-10	1/10W 10kΩ	R750	117-4731-10	1/10W 47kΩ
R603	117-1021-10	1/10W 1kΩ	R721	117-4731-10	1/10W 47kΩ	R760	117-4731-10	1/10W 47kΩ
R604	032-0104-59	1/4W 2.2Ω	R722	117-4731-10	1/10W 47kΩ	R761	117-4731-10	1/10W 47kΩ
R605	032-0104-59	1/4W 2.2Ω	R723	117-4731-10	1/10W 47kΩ	R762	117-4731-10	1/10W 47kΩ
R606	032-0104-59	1/4W 2.2Ω	R724	117-4731-10	1/10W 47kΩ	R770	117-1041-10	1/10W 100kΩ
R607	032-0104-59	1/4W 2.2Ω	R725	117-1231-10	1/10W 12kΩ	R780	032-0104-61	1/4W 2.2kΩ
R609	032-0104-59	1/4W 2.2Ω	R726	117-5631-10	1/10W 56kΩ	R781	117-1041-10	1/10W 100kΩ
R610	032-0104-59	1/4W 2.2Ω	R727	117-4731-10	1/10W 47kΩ	R782	117-1041-10	1/10W 100kΩ
R701	117-1811-10	1/10W 180Ω	R728	117-4731-10	1/10W 47kΩ	R783	117-1811-10	1/10W 180Ω
R702	117-2711-10	1/10W 270Ω	R729	117-4731-10	1/10W 47kΩ	R785	050-0140-63	47kΩ × 4
R703	117-1011-10	1/10W 100Ω	R730	050-0140-63	47kΩ × 4(NA)	R786	117-4731-10	1/10W 47kΩ
R704	117-2711-10	1/10W 270Ω	R730	117-4731-10	1/10W 47kΩ	R790	117-0000-00	1/10W 0Ω JW
R705	117-1041-10	1/10W 100kΩ			(MC/MF)	TM1	073-0762-90	TERMINAL
R706	117-1041-10	1/10W 100kΩ	R731	050-0140-63	47kΩ × 4	TM2	073-0762-90	TERMINAL
R707	117-1041-10	1/10W 100kΩ	R732	117-4731-10	1/10W 47kΩ	TM3	073-0762-90	TERMINAL
R708	117-1041-10	1/10W 100kΩ	R733	117-4731-10	1/10W 47kΩ	TM4	073-0762-90	TERMINAL
R709	117-1041-10	1/10W 100kΩ	R740	032-0145-64	1/2W 470Ω	X201	061-3508-90	16.9344MHz
R710	117-1041-10	1/10W 100kΩ	R741	117-4731-10	1/10W 47kΩ	X701	060-1009-00	4.91MHz

Side PWB section(B2)

REF No.	PART No.	DESCRIPTION	REF No.	PART No.	DESCRIPTION	REF No.	PART No.	DESCRIPTION
C620	178-1042-78	0.1 μF	D608	001-4302-38	UDZTE-17 33B	R615	117-1031-10	1/10W 10kΩ
C621	163-3353-61	50V3.3 μF	D609	001-0516-00	MA111	R616	117-1031-10	1/10W 10kΩ
C701	178-1042-78	0.1 μF	D701	001-0627-00	U1BC44	R617	117-4731-10	1/10W 47kΩ
C702	184-4773-31	16V470 μF	FIL603	060-3101-05	NFM39R12C102B1	R620	117-5631-10	1/10W 56kΩ
C703	178-1022-78	1000pF	FIL604	060-3101-05	NFM39R12C102B1	R621	117-5631-10	1/10W 56kΩ
C704	178-1032-78	0.01 μF	FIL605	060-3101-05	NFM39R12C102B1	R701	032-0145-61	1/2W 270Ω
C705	163-2273-25	10V 220 μF	IC801	051-1407-10	NJM4556AM	R705	117-2711-10	1/10W 270Ω
C710	042-0595-58	6.3V100 μF	IC802	051-1407-10	NJM4556AM	R801	117-1131-10	1/10W 11kΩ
C720	178-1022-78	1000pF	J200	074-1049-09	SOCKET(9P)	R802	117-1131-10	1/10W 11kΩ
C801	042-0595-60	10V33 μF	J201	074-1049-15	SOCKET(15P)	R803	117-1831-10	1/10W 18kΩ
C802	042-0595-60	10V33 μF	Q102	125-0014-02	DTA114EK	R804	117-1831-10	1/10W 18kΩ
C803	176-1511-00	150pF CH	Q103	125-2004-02	RN1402	R805	117-1031-10	1/10W 10kΩ
C804	176-1511-00	150pF CH	Q108	193-1758-00	2SD1758TK-P,Q,R	R806	117-1031-10	1/10W 10kΩ
C805	178-1032-78	0.01 μF	Q603	102-2712-00	2SC2712	R807	117-1031-10	1/10W 10kΩ
C806	176-2201-00	22pF CH	Q604	102-2712-00	2SC2712	R808	117-1031-10	1/10W 10kΩ
C807	176-2201-00	22pF CH	Q605	125-0014-02	DTA114EK	R809	117-8221-10	1/10W 8.2kΩ
C808	178-1042-78	0.1 μF	Q606	102-2712-00	2SC2712	R810	117-1031-10	1/10W 10kΩ
C809	163-1073-10	6.3V100 μF	Q607	125-2004-02	RN1402	R811	117-2201-10	1/10W 22Ω
C810	163-2273-25	10V 220 μF	Q701	193-1257-60	2SD1257DS-R,Q,P	R812	117-2201-10	1/10W 22Ω
C811	163-2273-25	10V 220 μF	Q711	103-1782-50	2SD1782K,Q,R	R813	117-2201-10	1/10W 22Ω
C812	163-2273-25	10V 220 μF	Q809	100-1162-00	2SA1162	R814	117-2201-10	1/10W 22Ω
C813	163-2273-25	10V 220 μF	Q810	125-2004-02	RN1402	R815	117-1031-10	1/10W 10kΩ
C821	178-5612-78	560pF	Q820	125-4001-00	XN1504	R816	117-1031-10	1/10W 10kΩ
C822	178-5612-78	560pF	Q821	125-4001-00	XN1504	R817	117-1031-10	1/10W 10kΩ
C823	178-5612-78	560pF	R601	117-5621-10	1/10W 5.6kΩ	R818	117-1031-10	1/10W 10kΩ
C824	178-5612-78	560pF	R606	117-5631-10	1/10W 56kΩ	R821	117-1021-10	1/10W 1kΩ
D102	001-4303-47	MA5091M	R609	032-0145-54	1/2W 10Ω	R822	117-1021-10	1/10W 1kΩ
D106	001-0528-32	MA8056-M	R610	117-2231-10	1/10W 22kΩ	R829	117-1031-10	1/10W 10kΩ
D602	001-2408-90	U2BC44	R611	117-1031-10	1/10W 10kΩ	R830	117-1031-10	1/10W 10kΩ
D603	001-0516-00	MA111	R612	117-4731-10	1/10W 47kΩ	T701	009-0625-02	CHOKE
D604	001-0516-00	MA111	R613	117-1031-10	1/10W 10kΩ			
D607	001-4302-38	UDZTE-17 33B	R614	117-1031-10	1/10W 10kΩ			

Escutcheon PWB section(B3)

REF No.	PART No.	DESCRIPTION	REF No.	PART No.	DESCRIPTION	REF No.	PART No.	DESCRIPTION
C401	178-1022-78	1000pF	D402	001-7045-00	CL-165D/FG-D	PL401	017-0433-04	14V40mA
C402	178-1022-78	1000pF	D403	001-7045-00	CL-165D/FG-D	PL402	017-0433-04	14V40mA
C403	178-1022-78	1000pF	D404	001-7045-00	CL-165D/FG-D	PL403	017-0433-04	14V40mA
C404	178-1022-78	1000pF	D405	001-7045-00	CL-165D/FG-D	PL404	017-0433-04	14V40mA
C405	178-1022-78	1000pF	D406	001-7045-00	CL-165D/FG-D	Q409	125-2004-02	RN1402
C406	178-1022-78	1000pF	D407	001-7045-00	CL-165D/FG-D	Q409	125-2020-02	DTC114EK
C410	178-1032-78	0.01 μF	D408	001-7045-00	CL-165D/FG-D	Q409	125-2005-01	UN2211
D401	001-7045-00	CL-165D/FG-D	IC401	051-6617-08	NJU3715G-TE2	Q409	125-2031-02	MUN2211

REF No.	PART No.	DESCRIPTION	REF No.	PART No.	DESCRIPTION	REF No.	PART No.	DESCRIPTION
Q410	125-2020-02	DTC114EK	R408	117-2211-10	1/10W 220Ω	R427	117-1031-10	1/10W 10kΩ
Q410	125-2005-01	UN2211	R409	117-2211-10	1/10W 220Ω	R428	117-1021-10	1/10W 1kΩ
Q410	125-2031-02	MUN2211	R410	117-2211-10	1/10W 220Ω	S401	013-6302-52	TACT SW
Q410	125-2004-02	RN1402	R411	117-2211-10	1/10W 220Ω	S402	013-6302-52	TACT SW
Q411	101-1188-00	2SB1188	R412	117-2211-10	1/10W 220Ω	S403	013-6302-52	TACT SW
R401	117-2211-10	1/10W 220Ω	R413	117-2211-10	1/10W 220Ω	S404	013-6302-52	TACT SW
R402	117-2211-10	1/10W 220Ω	R414	117-2211-10	1/10W 220Ω	S405	013-6302-52	TACT SW
R403	117-2211-10	1/10W 220Ω	R415	117-2211-10	1/10W 220Ω	S406	013-6302-52	TACT SW
R404	117-2211-10	1/10W 220Ω	R416	117-2211-10	1/10W 220Ω	S407	013-6302-52	TACT SW
R405	117-2211-10	1/10W 220Ω	R417	117-2221-10	1/10W 2.2kΩ	X401	060-0297-00	PKM13EPP-4002
R406	117-2211-10	1/10W 220Ω	R418	117-2221-10	1/10W 2.2kΩ			
R407	117-2211-10	1/10W 220Ω	R419	117-2221-10	1/10W 2.2kΩ			

Stage-connect-PWB(B4)

REF No.	PART No.	DESCRIPTION	REF No.	PART No.	DESCRIPTION	REF No.	PART No.	DESCRIPTION
PT4	060-0252-01	PT4850F	PT5	060-0252-01	PT4850F	PT6	060-0252-01	PT4850F

Stock-PI-FPC(B5)

REF No.	PART No.	DESCRIPTION
PT8	051-5806-02	GP1S95

Stage-left-FPC(B6)

REF No.	PART No.	DESCRIPTION	REF No.	PART No.	DESCRIPTION	REF No.	PART No.	DESCRIPTION
PT3	051-5806-01	GP1S93	SW5	013-7408-00	ESE22MH1	SW6	013-7410-00	ESE22MH3

Stage-LED-FPC-R(B7)

REF No.	PART No.	DESCRIPTION	REF No.	PART No.	DESCRIPTION
LED1	001-7042-00	GL4800	M3	SMA-174-100	LOADING

Stage-LED-FPC-L(B8)

REF No.	PART No.	DESCRIPTION	REF No.	PART No.	DESCRIPTION
LED2	001-7042-00	GL4800	LED3	001-7042-00	GL4800

Select-PI-FPC(B9)

REF No.	PART No.	DESCRIPTION
PT2	051-5806-01	GP1S93

Select-SW-FPC(B10)

REF No.	PART No.	DESCRIPTION
SW4	013-7408-00	ESE22MH1

Stage-PT-FPC-R(B11)

REF No.	PART No.	DESCRIPTION
PT7	060-0252-01	PT48850F

Mode-FPC(B12)

REF No.	PART No.	DESCRIPTION	REF No.	PART No.	DESCRIPTION	REF No.	PART No.	DESCRIPTION
PT1	051-5806-02	GP1S95	SW2	013-7408-00	ESE22MH1	SW3	013-7408-00	ESE22MH1
SW1	013-7410-00	ESE22MH3						

U/D motor FPC(B13)

REF No.	PART No.	DESCRIPTION
M1	SMA-173-100	UP/DOWN

Shave motor FPC(B14)

REF No.	PART No.	DESCRIPTION
M2	SMA-172-100	SHAVE

Drive unit FPC(B15)

REF No.	PART No.	DESCRIPTION	REF No.	PART No.	DESCRIPTION	REF No.	PART No.	DESCRIPTION
J1	074-1048-06	6P	LED4	001-0563-00	GL380	SW7	013-7409-00	00110681
J2	074-1049-12	12P	M4	SMA-176-100	THREAD			