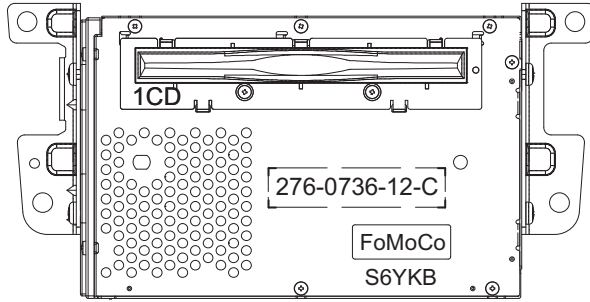


Service Manual



Ford Motor Genuine
 Satellite Digital Audio Radio
 AM/FM Tuner CD Player

Model **PU-3359A-A**
 (Genuine No. BR3T-19C157-AD)

ORIGINAL SERVICE MANUAL

The original model of PU-3359A-A is PU-3345A-B. This additional service manual is designed to be used together with the service manual of PU-3345A-B.

Original model	Manual No.
PU-3345A-B	298-6780-00

COMPONENT

PU-3359A-A

1. Main unit ----- 1

CAUTIONS

Use of controls, adjustment or performance of procedures other than those specified herein, may result in hazardous radiation exposure.

The compact disc player should not be adjusted or repaired by anyone except properly qualified service personnel.

FORD PART No.

SERIAL No.

MANUFACTURED

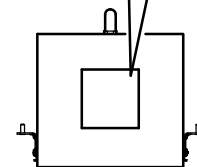
THIS DEVICE COMPLIES WITH PART 15 OF THE FCC RULES. OPERATION IS SUBJECT TO THE FOLLOWING TWO CONDITIONS:
 (1) THIS DEVICE MAY NOT CAUSE HARMFUL INTERFERENCE.
 AND (2) THIS DEVICE MUST ACCEPT ANY INTERFERENCE RECEIVED, INCLUDING INTERFERENCE THAT MAY CAUSE UNDESIRABLE OPERATION.

THIS PRODUCT COMPLIES WITH DHHS RULES "21 CFR, SUBCHAPTER J, PART 1040" AT DATE OF MANUFACTURE.

SDARS EIN

ongguan Clarion Orient Electronics Co., Ltd.
 Junda Industrial Zone, Zhongxing South Road, DongKengTown, Dongguan, Guangdong 523455, The People's Republic of China.

6YKB MADE IN CHINA PART No.



Bottom view of unit

EXPLODED VIEW/PARTS LIST

SETPLATE(No.27) is different from the original model.

Other parts are the same as PU-3345A-B.

Please refer to page 6 of the original manual.

NO.	PART NO.	DESCRIPTION	Q'TY
27	276-0736-12	SETPLATE	1

ELECTRICAL PARTS LIST

The following parts are different from the original model.

Other parts are the same as PU-3345A-B.

Please refer to page 6 of the original manual.

Main PWB(B1) section

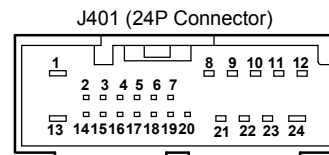
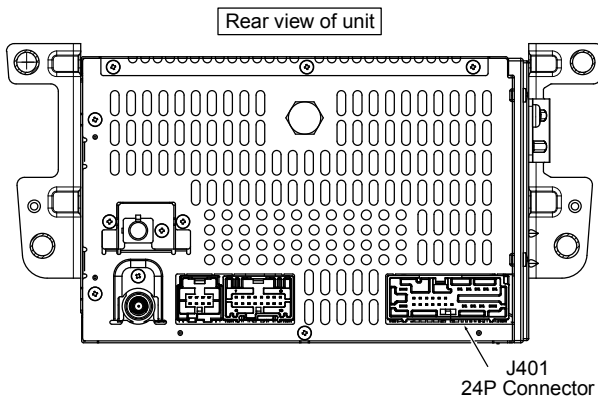
REF No.	PART No.	DESCRIPTION	REF No.	PART No.	DESCRIPTION	REF No.	PART No.	DESCRIPTION
C403	-----	NO USE	D603	-----	NO USE	R461	-----	NO USE
C405	-----	NO USE	IC402	-----	NO USE	R464	119-0000-05	1/10W 0 ohm JW
C416	-----	NO USE	IC408	-----	NO USE	R467	-----	NO USE
C453	-----	NO USE	Q421	-----	NO USE	R468	-----	NO USE
C456	119-1041-15	1/10W 100k ohm	Q424	-----	NO USE	R473	-----	NO USE
C458	-----	NO USE	R403	-----	NO USE	R642	-----	NO USE
C499	-----	NO USE	R407	-----	NO USE	R643	-----	NO USE
D400	-----	NO USE	R408	119-0000-05	1/10W 0 ohm JW	R644	119-0000-05	1/10W 0 ohm JW
D418	-----	NO USE	R411	-----	NO USE	R639	-----	NO USE
D422	-----	NO USE	R456	-----	NO USE			
D423	-----	NO USE	R460	-----	NO USE			

CONNECTION

Terminal of J401 is different from the original model.

Other connections are the same as PU-3345A-B.

Please refer to page 10 of the original manual.



Pin No.	Pin Name	Pin No.	Pin Name
1	Battery	13	Power Ground
2	N.C	14	N.C
3	N.C	15	Start
4	N.C	16	N.C
5	Switched B+Power	17	N.C
6	N.C	18	SWC1+
7	N.C	19	SWC1-
8	LF Speaker(+)	20	N.C
9	LR Speaker(+)	21	LF Speaker(-)
10	RR Speaker(+)	22	LR Speaker(-)
11	RF Speaker(+)	23	RR Speaker(-)
12	RF Speaker(-)	24	Audio Shield