

# Electrical Parts List

Capacitor :  $\mu$ F=microfarads,pF=picofarads

Abbreviations		
RES.= Resistor	CAP.= Capacitor	
C.F.= Carbon Film	ELY.= Electrolytic	
M.F.= Metal Film	CER.= Ceramic	
M.O.= Metal Oxide Film	MYL.= Mylar	
M.P.= Metal Plate	TAN.= Tantalum	
TR. = Transistor	POLY.= Polystyrol	
TRANS.= Transformer	PP. = Polypropylene	
CP. = Chip	PLT.= Polyethylene	
	PF. = Polyester Film	
Symbol No.	Part No.	Description
<b>Main P.W.Board</b>		
<b>IC's</b>		
IC101	51T15522Y01	MN662748RPM
IC102	51T65510W01	AN8806SB
IC103	51T15547Y02	BA5917AFP
IC104	51T95150W01	NJM78M05DLA
IC105	51T16025W01	NJM2100M
IC106	51T25002Y01	PCM1716E
IC203	51T93338F01	NJM4560E
IC501	51T25157Y01	25157Y01
IC502	51T25162Y01	M24C16-WMN6T
IC507	51T45571W02	LB1836M
IC508	51T85450W01	TDA3606
IC560	51T55070W04	MB88385APF
IC561	51T93332F01	NJM2903M
IC562	51T25370W01	MC14538BFEL
<b>Transistors</b>		
Q101	48T73888F12	CP., FMC2
Q103	48T84234F03	2SB1238
Q106	48T62967F03	CP., DTC124EKA
Q160	48T62967F03	CP., DTC124EKA
Q161	48T62967F03	CP., DTC124EKA
Q211	48T63788F01	CP., 2SD1328
Q212	48T63788F01	CP., 2SD1328
Q401	48T80614F01	CP., 2SD1664
Q501	48T73888F12	CP., FMC2
Q505	48T62966F01	CP., DTA143EKA
Q506	48T63417F01	CP., 2SC2412K
Q509	48T73888F12	CP., FMC2
Q512	48T73888F13	CP., FMC3
Q560	48T62967F08	CP., DTC144WKA
Q561	48T62967F03	CP., DTC124EKA
Q802	48T65256W03	2SD2136
Q803	48T73888F12	CP., FMC2

Symbol No.	Part No.	Description
Q804	48T73888F12	CP., FMC2
Q805	48T93828F01	2SD1994A
<b>Diodes</b>		
D101	48T25651W02	CP., MA152WK
D201	48T81063F01	CP., MA159
D501	48T68828F11	1SS133
D503	48T63463F01	CP., DAP202K
D511	48T25651W02	CP., MA152WK
D560	48T63462F01	CP., DAN202K
D598	48T81063F01	CP., MA159
D599	48T81063F01	CP., MA159
ZD501	48T25766W03	Zener, HZS6A3L
ZD560	48T25766W03	Zener, HZS6A3L
ZD561	48T45012W35	Zener, MTZJ7.5A
ZD562	48T45012W35	Zener, MTZJ7.5A
ZD801	48T25766W20	Zener, HZS9A2L
ZD802	48T25766W24	Zener, HZS9C1L
<b>Crystals</b>		
XL101	91T25806W92	16.9344MHz
XL501	91T15285W10	CER., Lock 8.38MHz
XL560	91T45118W12	4MHz
<b>Switches</b>		
SW401	40T55182W03	Tact, SKHVBB (EJECT)
SW701	40T45282W01	Slide, SLD-42-508 (DIGITAL/ANALOG)
<b>Coils</b>		
EF201	24T95457W06	Inductor, CP. BLM21B601SPT
T801	24T65097W01	Choke
<b>LED</b>		
LD401	48T75203W01	MBG4361F (GRN)

Symbol No.	Part No.	Description	Symbol No.	Part No.	Description
<b>Thermistor</b>			C209	08T15399W04	CP., 0.027 $\mu$ F
TH502	48T15688Y01	CP., 100K ohm	C210	08T15399W04	CP., 0.027 $\mu$ F
<b>Capacitors</b>			C211	08T15399W04	CP., 0.027 $\mu$ F
C101	08T15399W01	CP., 0.022 $\mu$ F	C212	08T15399W04	CP., 0.027 $\mu$ F
C102	08T15399W01	CP., 0.022 $\mu$ F	C233	08S82122F59	CP., 820pF
C103	08S82122F15	CP., 12pF	C234	08S82122F59	CP., 820pF
C104	08S82122F15	CP., 12pF	C401	08T15399W04	CP., 0.027 $\mu$ F
C106	08S65128F60	CP., 1800pF	C402	08S65128F62	CP., 2700pF
C107	08T15399W03	CP., 0.047 $\mu$ F	C403	08S82122F43	CP., 180pF
C108	08S35374W01	CP., 0.1 $\mu$ F	C501	08S82122F43	CP., 180pF
C109	08S35374W01	CP., 0.1 $\mu$ F	C502	08T15399W04	CP., 0.027 $\mu$ F
C110	08S35374W01	CP., 0.1 $\mu$ F	C504	08T15399W04	CP., 0.027 $\mu$ F
C111	08S82122F55	CP., 560pF	C507	08T15399W04	CP., 0.027 $\mu$ F
C112	08S82122F37	CP., 100pF	C513	08S82122F43	CP., 180pF
C113	08T15399W04	CP., 0.027 $\mu$ F	C514	08S35374W01	CP., 0.1 $\mu$ F
C114	08S65128F65	CP., 4700pF	C515	08T15399W04	CP., 0.027 $\mu$ F
C115	08S65128F61	CP., 2200pF	C522	08T15399W04	CP., 0.027 $\mu$ F
C116	08T15399W04	CP., 0.027 $\mu$ F	C560	08T15399W04	CP., 0.027 $\mu$ F
C117	08S65128F68	CP., 8200pF	C561	08S82122F19	CP., 18pF
C118	08T15399W04	CP., 0.027 $\mu$ F	C562	08S82122F19	CP., 18pF
C119	08S35374W01	CP., 0.1 $\mu$ F	C563	08S35374W01	CP., 0.1 $\mu$ F
C121	08S35374W01	CP., 0.1 $\mu$ F	C564	08T15399W04	CP., 0.027 $\mu$ F
C122	08S82122F46	CP., 240pF	C565	08S65128F63	CP., 3300pF
C123	08S82122F29	CP., 47pF	C566	08S35374W01	CP., 0.1 $\mu$ F
C124	08S35374W01	CP., 0.1 $\mu$ F	C567	08S82122F37	CP., 100pF
C130	08S35374W01	CP., 0.1 $\mu$ F	C568	08T15399W04	CP., 0.027 $\mu$ F
C132	08T15399W04	CP., 0.027 $\mu$ F	C801	08T15399W04	CP., 0.027 $\mu$ F
C133	08T15399W04	CP., 0.027 $\mu$ F	C805	08T15399W04	CP., 0.027 $\mu$ F
C134	08T55487W02	CP., 0.22 $\mu$ F	E101	23S75372W02	ELY., 100 $\mu$ F / 10V
C135	08S35374W01	CP., 0.1 $\mu$ F	E103	23S75372W15	ELY., 1 $\mu$ F / 50V
C136	08S82122F37	CP., 100pF	E104	23T74437F21	TAN., 10 $\mu$ F / 10V
C141	08S82122F43	CP., 180pF	E105	23T74437F32	TAN., 10 $\mu$ F / 16V
C142	08S82122F43	CP., 180pF	E106	23T74437F30	TAN., 4.7 $\mu$ F / 16V
C143	08S82122F43	CP., 180pF	E113	23S75372W02	ELY., 100 $\mu$ F / 10V
C144	08S82122F43	CP., 180pF	E130	23S75372W02	ELY., 100 $\mu$ F / 10V
C145	08T15399W04	CP., 0.027 $\mu$ F	E131	23S75372W12	ELY., 0.33 $\mu$ F / 50V
C153	08S65128F58	CP., 1200pF	E132	23S75372W03	ELY., 220 $\mu$ F / 10V
C190	08S65128F19	CP., 22pF	E133	23S75372W06	ELY., 33 $\mu$ F / 16V
C191	08T15399W03	CP., 0.047 $\mu$ F	E201	23S75372W05	ELY., 22 $\mu$ F / 16V
C201	08S82122F41	CP., 150pF	E202	23S75372W05	ELY., 22 $\mu$ F / 16V
C202	08S82122F41	CP., 150pF	E203	23S75372W05	ELY., 22 $\mu$ F / 16V
C205	08S82122F47	CP., 270pF	E204	23S75372W05	ELY., 22 $\mu$ F / 16V
C206	08S82122F47	CP., 270pF	E206	23S75372W05	ELY., 22 $\mu$ F / 16V
C207	08S82122F59	CP., 820pF	E207	23S75372W06	ELY., 33 $\mu$ F / 16V
C208	08S82122F59	CP., 820pF	E208	23S75372W05	ELY., 22 $\mu$ F / 16V
			E209	23S75372W05	ELY., 22 $\mu$ F / 16V
			E210	23S75372W05	ELY., 22 $\mu$ F / 16V
			E211	23S75372W05	ELY., 22 $\mu$ F / 16V
			E501	23S75372W13	ELY., 0.47 $\mu$ F / 50V

Symbol No.	Part No.	Description	Symbol No.	Part No.	Description
E502	23S75372W17	ELY., 3.3 $\mu$ F / 50V	R144	06S64995F52	910 ohm
E503	23S75372W04	ELY., 10 $\mu$ F / 16V	R145	06S64995F94	51K ohm
E504	23S75372W15	ELY., 1 $\mu$ F / 50V	R146	06S64995F89	33K ohm
E801	23T75427W01	ELY., 470 $\mu$ F / 16V	R147	06S64995F50	750 ohm
E802	23S75372W03	ELY., 220 $\mu$ F / 10V	R149	—	Jumper
E803	23S75372W06	ELY., 33 $\mu$ F / 16V	R152	06S64995F50	750 ohm
E804	23S75372W06	ELY., 33 $\mu$ F / 16V	R153	06S64996F11	240K ohm
E808	23S75372W01	ELY., 330 $\mu$ F / 6.3V	R154	06S64995F85	22K ohm
E809	23S75372W06	ELY., 33 $\mu$ F / 16V	R155	06S64995F85	22K ohm
E811	23S75372W05	ELY., 22 $\mu$ F / 16V	R156	—	Jumper
E812	23S75372W02	ELY., 100 $\mu$ F / 10V	R157	—	Jumper
E813	23S75372W05	ELY., 22 $\mu$ F / 16V	R159	06S64995F77	10K ohm
(All resistors are chip 1/10W $\pm$ 5% unless otherwise noted.)			R160	06S64995F90	36K ohm
<b>Resistors</b>			R161	06S64995F90	36K ohm
R101	06S64995F78	11K ohm	R162	06S64996F10	220K ohm
R102	06S64996F10	220K ohm	R163	06S64996F10	220K ohm
R103	06S64996F11	240K ohm	R165	06S64995F93	47K ohm
R104	06S64995F91	39K ohm	R194	06S64995F77	10K ohm
R105	06S64995F91	39K ohm	R196	06S64995F45	470 ohm
R106	06S64996F06	150K ohm	R201	06S64995F70	5.1K ohm
R107	06S64995F77	10K ohm	R202	06S64995F70	5.1K ohm
R108	—	Jumper	R203	06S64995F82	16K ohm
R109	06S64996F04	120K ohm	R204	06S64995F82	16K ohm
R110	06S64996F26	1M ohm	R207	06S64995F61	2.2K ohm
R111	06S64996F02	100K ohm	R208	06S64995F61	2.2K ohm
R112	06S64995F45	470 ohm	R209	06S64995F81	15K ohm
R113	06S64995F88	30K ohm	R210	06S64995F81	15K ohm
R114	06S64995F59	1.8K ohm	R213	06S64995F50	750 ohm
R115	06S64996F04	120K ohm	R214	06S64995F50	750 ohm
R116	06S64995F29	100 ohm	R225	06S64995F86	24K ohm
R117	06S64995F29	100 ohm	R226	06S64995F86	24K ohm
R118	06S64995F53	1K ohm	R227	06S64995F21	47 ohm
R120	—	Jumper	R228	06S64995F21	47 ohm
R121	06S64995F63	2.7K ohm	R229	06S64995F78	11K ohm
R123	06S64996F10	220K ohm	R230	06S64995F78	11K ohm
R124	06S64996F10	220K ohm	R231	06S64995F53	1K ohm
R125	—	Jumper	R232	06S64995F45	470 ohm
R126	06S64995F83	18K ohm	R235	06S64995F50	750 ohm
R127	06S64995F77	10K ohm	R241	06S64996F11	240K ohm
R130	06S64995F76	9.1K ohm	R242	06S64996F11	240K ohm
R131	06S64996F01	91K ohm	R247	—	Jumper
R132	—	Jumper	R248	—	Jumper
R133	06S64995F78	11K ohm	R249	—	Jumper
R134	06S64995F60	2K ohm	R401	06S70072F46	510 ohm 1/4W
R141	06S70072F13	22 ohm 1/4W	R402	06S70072F49	680 ohm 1/4W
R142	—	Jumper	R504	06S70072F37	220 ohm 1/4W
R143	06S64996F06	150K ohm	R505	06S64996F02	100K ohm
			R506	06S64995F93	47K ohm
			R507	06S64995F93	47K ohm

Symbol No.	Part No.	Description
R508	06S64995F93	47K ohm
R509	06S64995F93	47K ohm
R512	—	Jumper
R513	06S64995F98	75K ohm
R514	06S64995F77	10K ohm
R515	06S53331F41	1 ohm 1/8W
R517	06S64995F85	22K ohm
R518	06S64995F50	750 ohm
R523	—	Jumper
R527	06S64995F53	1K ohm
R535	06S64995F93	47K ohm
R536	06S64995F93	47K ohm
R551	06S95214F14	330K ohm 1/8W
R552	06S95214F13	120K ohm 1/8W
R554	06S64995F93	47K ohm
R556	06S64995F95	56K ohm
R559	06S64995F53	1K ohm
R560	06S64995F69	4.7K ohm
R561	06S64995F69	4.7K ohm
R562	06S64995F69	4.7K ohm
R563	06S64995F69	4.7K ohm
R564	06S64995F69	4.7K ohm
R565	06S70072F34	160 ohm 1/4W
R566	06S64995F61	2.2K ohm
R567	06S64995F57	1.5K ohm
R568	06S64995F77	10K ohm
R569	06S64995F77	10K ohm
R570	06S70072F34	160 ohm 1/4W
R571	06S70072F34	160 ohm 1/4W
R572	06S70072F34	160 ohm 1/4W
R573	06S64995F57	1.5K ohm
R574	06S64995F61	2.2K ohm
R575	06S64995F69	4.7K ohm
R576	06S64995F93	47K ohm
R577	06S64996F26	1M ohm
R578	06S64995F93	47K ohm
R579	06S64995F93	47K ohm
R580	06S64995F81	15K ohm
R581	06S64995F75	8.2K ohm
R582	06S64996F14	330K ohm
R583	06S64995F77	10K ohm
R584	06S64995F87	27K ohm
R585	06S64996F18	470K ohm
R600	06S70072F05	10 ohm 1/4W
R603	06S64995F93	47K ohm
R701	06S64995F29	100 ohm
R702	06S64995F93	47K ohm
R801	06S70072F34	160 ohm 1/4W
R802	06S70072F34	160 ohm 1/4W

Symbol No.	Part No.	Description
R803	06S70072F45	470 ohm 1/4W
R804	06S64995F61	2.2K ohm
R805	06S64995F61	2.2K ohm
R806	06S64995F61	2.2K ohm
R807	06S64995F61	2.2K ohm
<b>Connectors</b>		
CB501	09T90625F54	WTB, TXL-04PL
CB502	09T45435W10	FFC, 52207-1090
CB503	09T45434W15	FFC, 52271-1590
CB801	09T45434W11	FFC, 52271-1190
<b>Connector P.W.Board</b>		
<b>Capacitors</b>		
C910	08S82122F59	CP., 820pF
C911	08T15399W04	CP., 0.027μF
C912	08S82122F43	CP., 180pF
E931	23S75372W09	ELY., 4.7μF / 35V
(All resistors are chip 1/4W±5% unless otherwise noted.)		
<b>Resistors</b>		
R920	06S70072F05	10 ohm
R921	06S70072F05	10 ohm
R922	06S70072F45	470 ohm
R923	06S64995F75	8.2K ohm 1/10W
<b>Connectors</b>		
CB901	09T45435W11	FFC, 52207-1190
CB902	09T55229W59	WTB, SC25-09WN
<b>Elevator P.W.Board</b>		
<b>Connector</b>		
CH501	01T65226W01	Assy., Wire Motor 4P



# Exploded View (Cabinet)

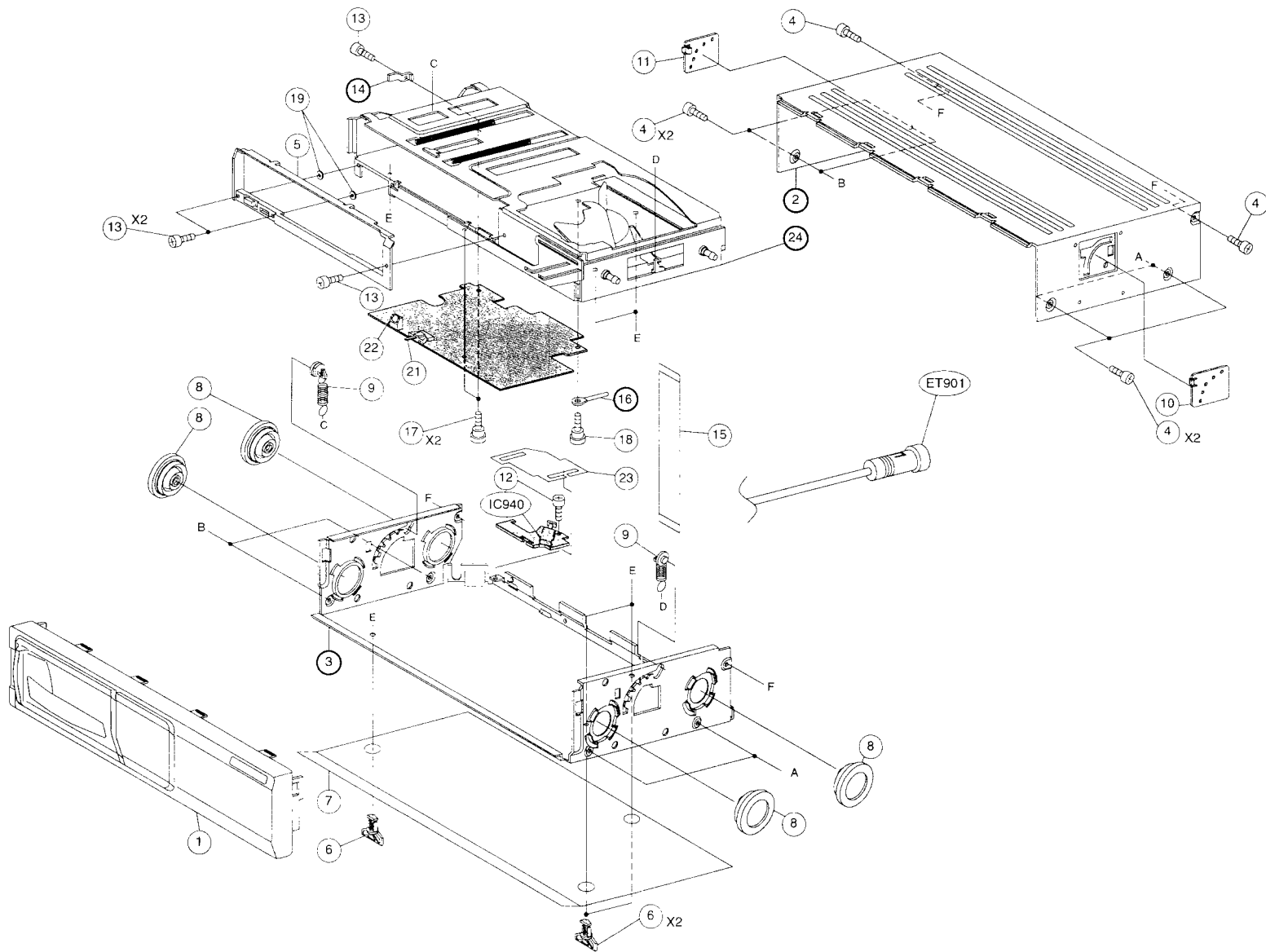
1

2

3

4

5



# Cabinet Assembly Parts List

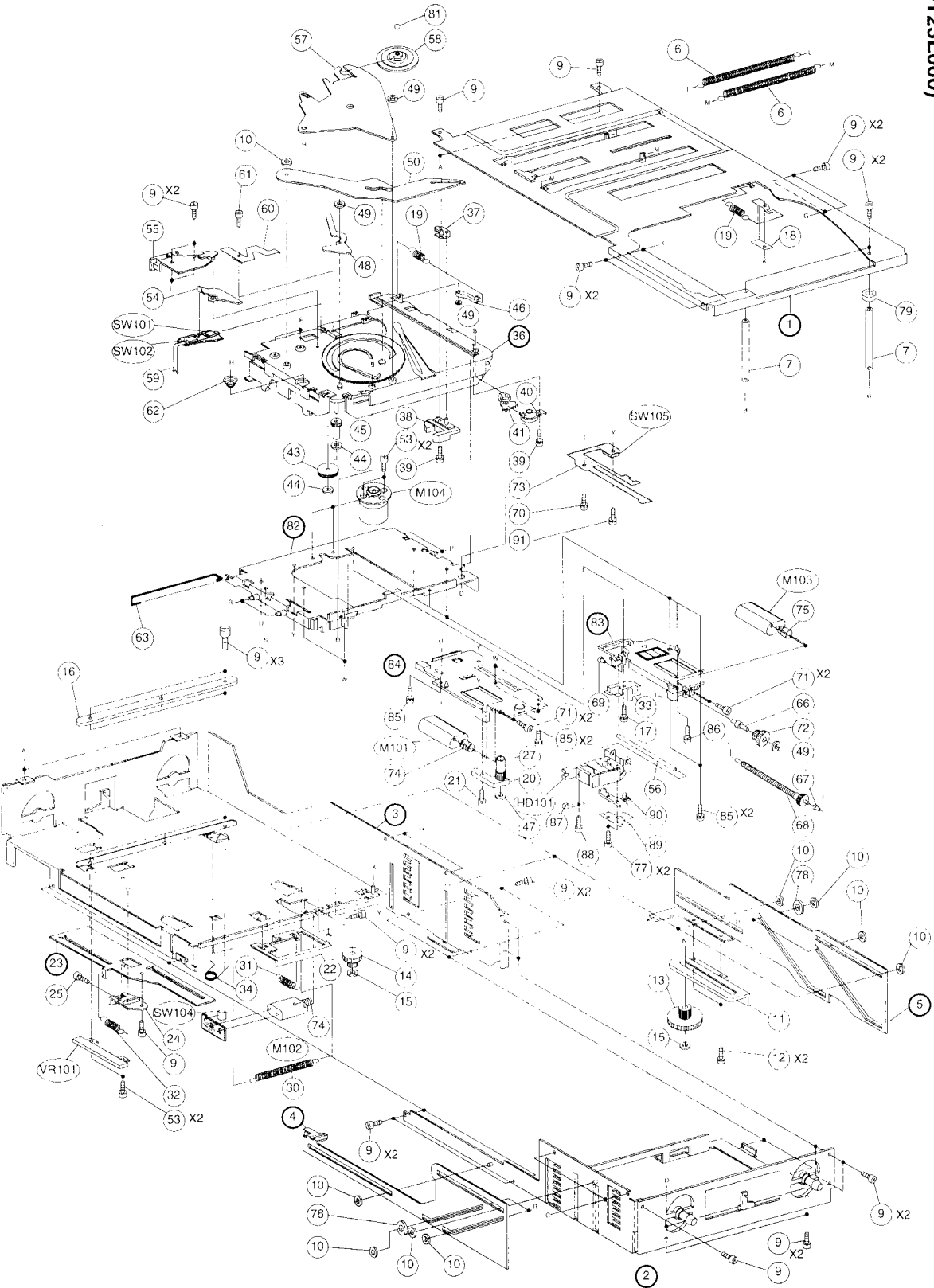
NOTE: Parts without part number are not supplied.

Symbol No.	Index	Part No.	Description	Symbol No.	Index	Part No.	Description
1	5-B	13T25267Y01	Assy., Front Escutcheon				
4		03A61184W04	Screw, Bind (M2.6X5)				
5	2-B	64B20507Y02	Assy., Plate Inner				
6		55A20491Y01	Key, Lock				
7	5-C	54B20712Y01	Card, Caution				
8		75C10781Y01	Damper, DT (D)				
9		07A61053W04	Assy., Bracket Spring				
10	3-G	15B20488Y03	Cover, SP (R)				
11	1-D	15B20488Y04	Cover, SP (L)				
12	3-C	03S38013W36	Screw, Bind (M2.6X4)				
13		03S94385F48	Screw, Pan Nylok (M2X4)				
15	3-D	30T65173W01	Wire, Flat				
17	3-C	03A38056W01	Screw, Special (M2.6X6)				
18	3-D	03A38056W02	Screw, Special (M2.6X6)				
19	1-B	14A11387Y01	Insulator, Cover Plate				
21	3-C	36A81548W01	Knob, Switch				
22	3-C	43A70497W01	Spacer, LED				
23	3-D	14A20715Y01	Insulator, P.W.Board				

# Exploded View (CD Mechanism) (DT23L060)

CHA-S624

CHA-S624



A I B -41- I C I D I E I F -42- I G I

5 4 3 2 1

# CD Mechanism Assembly Parts List

NOTE: Parts without part number are not supplied.

Symbol No.	Index	Part No.	Description	Symbol No.	Index	Part No.	Description
6		41B51993W01	Spring, Extension	62	5-C	41A51995W01	Spring, Compression
7		47A51917W01	Shaft, Guide	63	5-D	41A51923W01	Spring, Rod
9		03S94385F19	Screw, Pan Nylok (M2X2.5)	66	2-D	46A60171W01	Stud, Middle
10		04B41345P22	Washer, Lock (M2.6)	67	2-E	43A60164W01	Bush, Screw (A)
11	2-F	44B51886W01	Rack, Elevator	68	2-E	01V61300W99	Assy., Shaft Screw
12	2-F	03S40014G07	Screw, W / Washer (M2X4)	69	2-D	43A60165W01	Bush, Screw (B)
13	2-F	44A60088W01	Gear, Rack	70	3-D	03S40014G62	Screw, W / Washer (M2X3)
14	3-F	44A60089W01	Gear, Wheel	71		03S94385F58	Screw, Pan Nylok (M2X3.5)
15		04B41345P24	Washer, Lock (M2.1)	72	2-E	44A60162W01	Gear, Middle
16	5-D	15A51889W01	Guide, Magazine	73	3-C	84T1553Y01	FPC Drive P.W.Board
17	2-E	03D40121T56	Screw, W / Double Washer (M2X4)	74		44A10811Y01	Worm, STD
18	2-B	45A51880W01	Stopper, Tray	75	2-D	44A60161W01	Gear, Motor
19		41B51993W02	Spring, Extension	77	2-E	03S94385F10	Screw, Pan Nylok (M2X4)
20	3-E	45A60160W01	Spacer, Bracket Motor	78		04B41345P05	Washer, Lock (M3.5)
21	3-E	03S40014G16	Screw, W/Washer (M2X14)	79	1-C	75A80830W01	Rubber, Sleeve
22	4-F	45A51874W01	Slide, Magazine Switch	81	3-A	43A70360W01	Steel, Ball
24	5-F	07A51882W01	Bracket, Sensor	85		03S40014G66	Screw, W/Washer (M2X3.5)
25	5-F	03S94385F11	Screw, Pan Nylok (M2X5.2)	86	2-E	03S40014G84	Screw, W/Washer (M2X6.5)
27	3-E	44A52035W01	Gear, Drive	87	3-E	41A11040Y01	Spring, Sled-HOE
30	4-F	41B51993W03	Spring, Extension	88	3-E	03S72235F81	Screw, Pan (M1.4X2)
31	4-F	41B51993W04	Spring, Extension	89	2-E	41A11099Y01	Spring, Nut (A)
32	5-G	41B51993W05	Spring, Extension	90	2-E	44A11101Y01	Spring, Nut (B)
33	2-D	07B91155W01	Stopper, Shaft (B)	91	3-D	03S40014G75	Screw, W/Washer (M2X9)
34	4-F	41A51996W01	Spring, Torsion				
37	3-B	01A51932W01	Assy., Riv. Bracket Push Pull				
38	3-C	45A51898W01	Arm, Push Pull				
39	3-C	03S40014G61	Screw, W / Washer (M2X5)				
40	3-C	15A51890W01	Guide, Chassis Tray				
41	3-C	07A51884W01	Bracket, Corner				
43	4-C	44A52036W01	Gear, Cam				
44	4-C	04B41345P15	Washer, Lock (M1.2)				
45	4-C	44A51896W01	Gear, Driven				
46	3-C	45A51894W01	Arm, Tray (A)				
47	3-E	04B41345P02	Washer, Lock (M1.7)				
48	4-B	01A51937W01	Assy., Riv. Lever Slide				
49		04B41345P12	Washer, Lock (M1.7)				
50	3-B	45A52034W01	Lever, Cam				
53		03S94385F01	Screw, Pan Nylok (M1.7X2.3)				
54	5-B	45A51887W01	Arm, Switch				
55	5-B	15B51891W01	Guide, Tray Side				
56	2-E	47A60169W01	Shaft, Pick-Up				
57	4-A	07B51879W01	Bracket, Clamper				
58	3-A	43A91063W01	Table, Clamper-D				
59	5-C	84T65057W01	FPC Switch P.W.Board				
60	4-B	41A91064W01	Spring, Clamper				
61	4-B	03S94385F07	Screw, Pan Nylok (M2X2)				