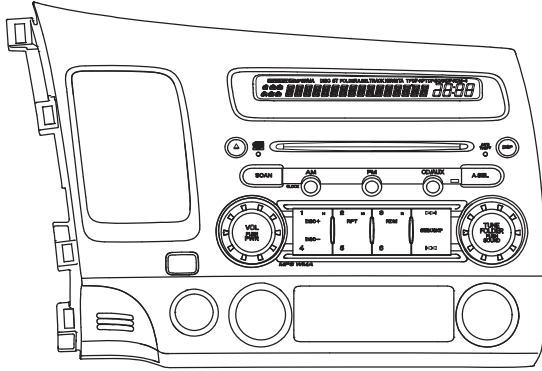


Service Manual



HONDA Automobile Genuine AM/FM Radio CD Stereo

Model PH-2679C-F
 (Genuine No. 39100-SVA-A01)
 (ID No. 4BC0 / ID Label: HL-B)

Model PH-2679C-G
 (Genuine No. 39100-SVA-A01)
 (ID No. 4BC0 / ID Label: HL-H)

ORIGINAL SERVICE MANUAL

This additional service manual is designed to be used together with the original manual.

	Original model	Manual No.
PH-2679C-F	PH-2679C-A	298-6294-00
PH-2679C-G	PH-2679C-B	

DIFFERENT POINT

CD mechanism and some parts were changed from the original model(PH-2679C-A/B).

	PH-2679C-A/B	PH-2679C-F/G
CD mechanism	929-0292-80	929-5000-80

To engineers in charge of repair or inspection of our products.

Before repair or inspection, make sure to follow the instructions so that customers and Engineers in charge of repair or inspection can avoid suffering any risk or injury.

- Use specified parts.
 The system uses parts with special safety features against fire and voltage. Use only parts with equivalent characteristics when replacing them.
 The use of unspecified parts shall be regarded as remodeling for which we shall not be liable. The onus of product liability (PL) shall not be our responsibility in cases where an accident or failure is as a result of unspecified parts being used.
- Place the parts and wiring back in their original positions after replacement or re-wiring.
 For proper circuit construction, use of insulation tubes, bonding, gaps to PWB, etc. is involved. The wiring connection and routing to the PWB are specially planned using clamps to keep away from heated and high voltage parts. Ensure that they are placed back in their original positions after repair or inspection.

If extended damage is caused due to negligence during repair, the legal responsibility shall be with the repairing company.

- Check for safety after repair.
 Check that the screws, parts and wires are put back securely in their original position after repair. Ensure for safety reasons there is no possibility of secondary problems around the repaired spots.
 If extended damage is caused due to negligence of repair, the legal responsibility shall be with the repairing company.
- Caution in removal and making wiring connection to the parts for the automobile.
 Disconnect the battery terminal after turning the ignition key off. If wrong wiring connections are made with the battery connected, a short circuit and/or fire may occur. If extensive damage is caused due to negligence of repair, the legal responsibility shall be with the repairing company.
- Cautions in soldering
 Please do not spread liquid flux in soldering.
 Please do not wash the soldering point after soldering.
- Cautions in soldering for chip capacitors
 Please solder the chip capacitors after pre-heating for replacement because they are very weak to heat.
 Please do not heat the chip capacitors with a soldering iron directly.
- Cautions in handling for chip parts.
 Do not reuse removed chips even when no abnormality is observed in their appearance. Always replace them with new ones. (The chip parts include resistors, capacitors, diodes, transistors, etc).
 Please make an operation test after replacement.
- Cautions in handling flexible PWB
 Before working with a soldering iron, make sure that the iron tip temperature is around 270°C. Take care not to apply the iron tip repeatedly (more than three times) to the same patterns. Also take care not to apply the tip with force.
- Turn the unit OFF during disassembly and parts replacement.
 Recheck all work before you apply power to the unit.
- Cautions in checking that the optical pickup lights up.

pin 91: REM 5V : O: Power ON signal output to the 5V and 3.3V supply circuit.
 pin 92: POWER STB : O: The standby signal output to Power IC.
 pin 93: POWER MUTE : O: The mute signal output to Power IC.
 pin 94: POWER DIAG : IN: The diagnosis signal input from Power IC.
 pin 95: AUX DET : IN: AUX detection signal input.

pin 96: ANC DET : IN: ANC detection signal input.
 pin 97: HFT MUTE : IN: HFT level-detection for mute.
 pin 98: PAS MUTE : IN: PAS level-detection for mute.
 pin 99: TEL MUTE : IN: Telephone mute command input.
 pin100: ST REMO : IN: Steering wheel remote control detection.

CIRCUIT DIAGRAM

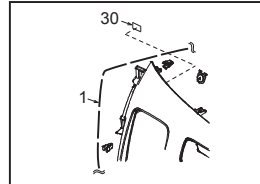
: Changed point

- Please refer to ELECTRICAL PARTS LIST about the changed parts.
- Other circuits are the same as the original model.
Please refer to the original service manual [page21-25].

EXPLODED VIEW / PARTS LIST

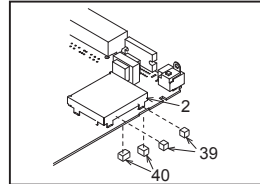
Escutcheon section * Other parts are the same as the original model. Please refer to page 10 of the original service manual.

NO.	PART NO.	DESCRIPTION	QTY
1	940-8109-04 940-8109-44	ES-ASSY (PH2679CF) ES-ASSY (PH2679CG)	1
5	379-1373-43	LCD(INDICATOR)	1
10	074-3014-74	OUTLET SOCKET(24P)	1
29	347-7841-51	PROTECTOR	1
30	290-0016-00 290-0016-07	LABEL(HL-B) (PH2679CF) LABEL(HL-H) (PH2679CG)	1



Main section * Other parts are the same as the original model. Please refer to page 11 of the original service manual.

NO.	PART NO.	DESCRIPTION	QTY
4	310-1817-02	UPPER CASE	1
10	816-4028-50	FLAT WIRE	1
16	714-2614-8B	MACHINE SCREW(M2.6x14)	2
17	714-2603-8B	MACHINE SCREW(M2.6x3)	2
19	929-5000-80	CD MECHANISM	1
21	286-6685-10 286-6685-12	SETPLATE (PH2679CF) SETPLATE (PH2679CG)	1
22	-----	SOCKET CVR(UNUSED)	1
31	074-1237-79	OUTLET SOCKET(MECH)	1
39	345-8581-03	GASKET(T/PACK)	2
40	345-8720-00	GASKET	2



ELECTRICAL PARTS LIST

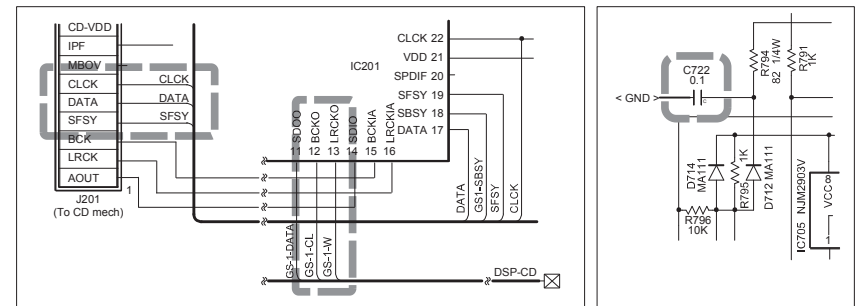
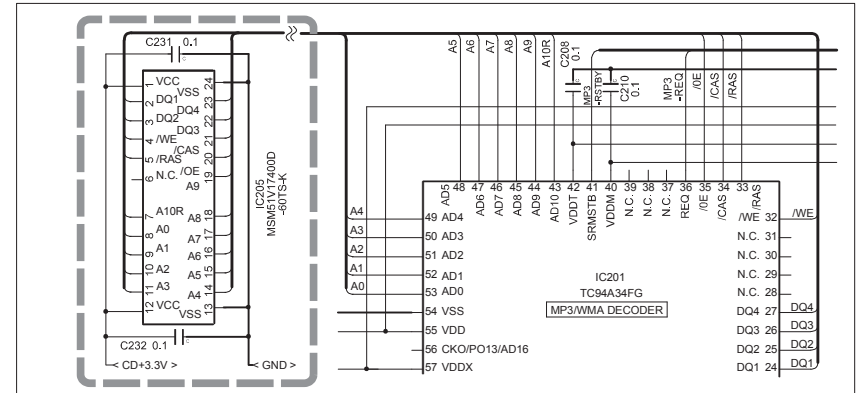
Main PWB(B1) section * Other parts are the same as the original model. Please refer to page 14 of the original service manual.

REF No.	PART No.	DESCRIPTION	REF No.	PART No.	DESCRIPTION	REF No.	PART No.	DESCRIPTION
C212	043-0554-90	25V 10uF	C502	163-2263-15	6.3V 22uF	IC701	051-5423-38	BD6329G-TR
C215	163-1073-15	6.3V 100uF	C536	168-2222-55	2200pF K	IC703	052-3197-21	uPD703272YGC324-8EAA
C217	119-3331-15	1/10W 33k ohm	C538	168-2222-55	2200pF K	IC705	051-3408-90	BA2903FV
C221	163-4763-15	6.3V 47uF	C541	168-2222-55	2200pF K	J201	074-1237-79	SOCKET(29P)
C222	163-4763-15	6.3V 47uF	C542	168-2222-55	2200pF K	R745	-----	UNUSED
C226	043-0554-90	25V 10uF	C564	163-1073-35	16V 100uF	R806	119-3331-15	1/10W 33k ohm
C227	043-0554-90	25V 10uF	C714	-----	UNUSED	R811	-----	UNUSED
C228	163-1073-15	6.3V 100uF	C722	168-1042-78	16V 0.1uF	R814	119-1031-15	1/10W 10k ohm
C231	168-1042-78	16V 0.1uF	C734	-----	UNUSED	TC701	004-1583-51	10pF WHT
C232	168-1042-78	16V 0.1uF	C736	166-4096-50	4pF CH	X702	061-3506-80	32.768MHz
C400	168-1022-55	1000pF K	IC201	051-6711-20	TC94A34FG-004	PWB	039-2882-00	PWB(WITHOUT COMPONENTS)
C467	-----	UNUSED	IC205	051-9318-00	MSM51V17400D-60TS-K			
C490	-----	UNUSED	IC506	051-3057-90	BA4558RFV			
C492	-----	UNUSED						

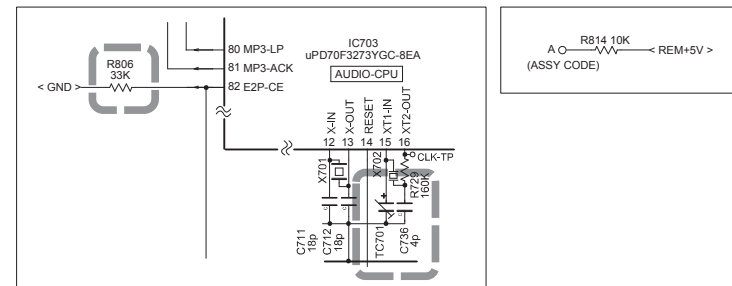
Switch PWB(B2) section * Other parts are the same as the original model. Please refer to page 16 of the original service manual.

REF No.	PART No.	DESCRIPTION	REF No.	PART No.	DESCRIPTION	REF No.	PART No.	DESCRIPTION
D101	001-7100-90	NESB017-EE2-KLP7*17.5	D107	001-7100-90	NESB017-EE2-KLP7*17.5	D112	001-7100-90	NESB017-EE2-KLP7*17.5
D102	001-7100-90	NESB017-EE2-KLP7*17.5	D108	001-7100-90	NESB017-EE2-KLP7*17.5	LCD101	379-1373-43	INDICATOR(LCD)
D103	001-7100-90	NESB017-EE2-KLP7*17.5	D109	001-7100-90	NESB017-EE2-KLP7*17.5	R105	116-2711-15	1/4W 270 ohm
D104	001-7100-90	NESB017-EE2-KLP7*17.5	D110	001-7100-90	NESB017-EE2-KLP7*17.5	R106	116-2711-15	1/4W 270 ohm
D105	001-7100-90	NESB017-EE2-KLP7*17.5	D111	001-7100-90	NESB017-EE2-KLP7*17.5	R107	116-2711-15	1/4W 270 ohm
D106	001-7100-90	NESB017-EE2-KLP7*17.5				R108	116-2711-15	1/4W 270 ohm
						R109	116-2711-15	1/4W 270 ohm
						R110	116-2711-15	1/4W 270 ohm
						PWB	039-2973-00	PWB(WITHOUT COMPONENTS)

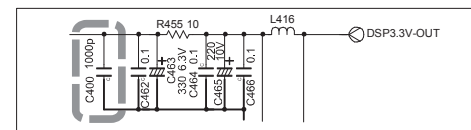
Main PWB section(B1) 2/5



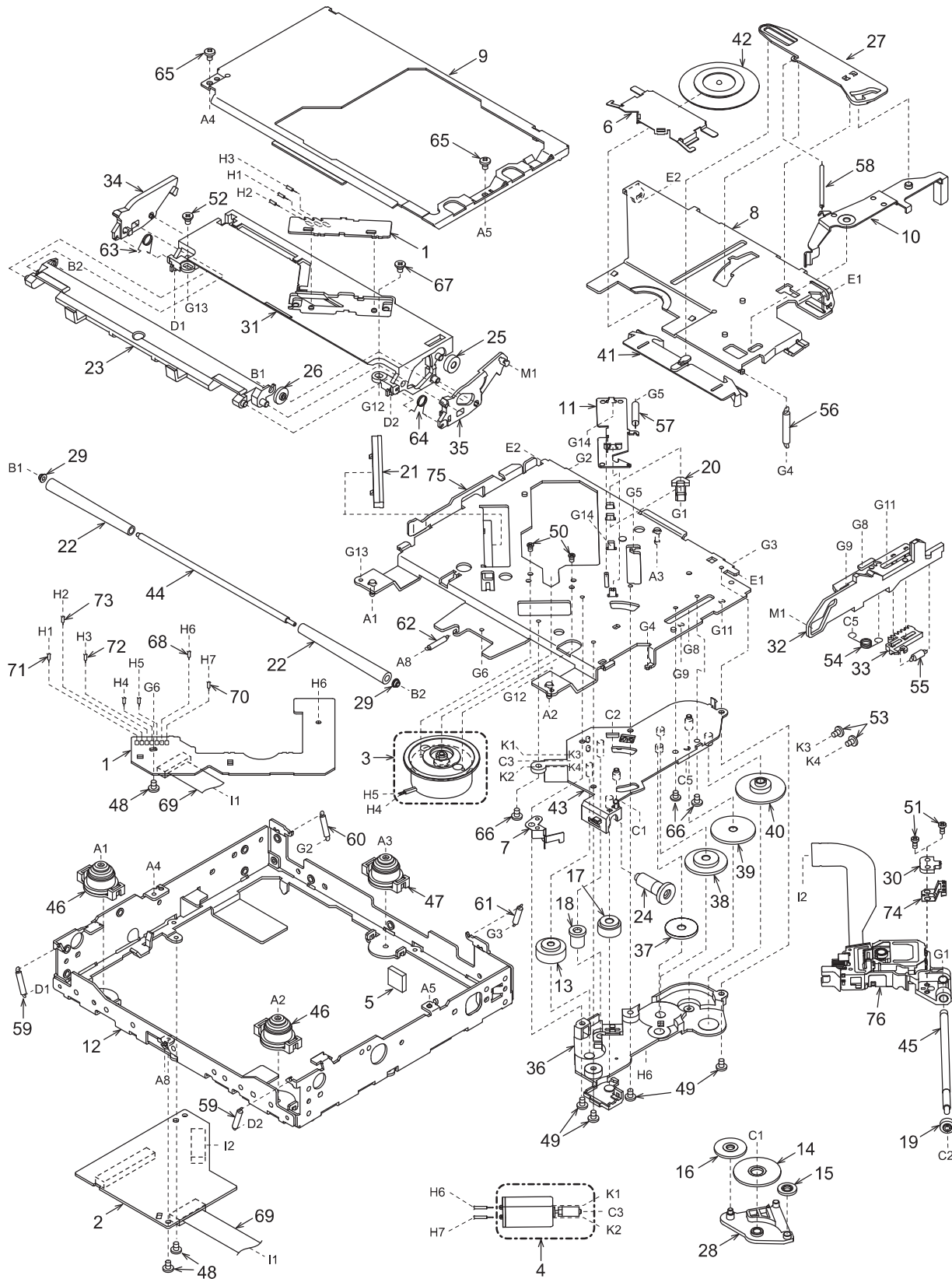
Main PWB section(B1) 3/5



Main PWB section(B1) 4/5



EXPLODED VIEW / PARTS LIST



NO.	PART NO.	DESCRIPTION	Q'TY	NO.	PART NO.	DESCRIPTION	Q'TY
1	-----	SENSOR PWB	1	39	621-1750-20	POWER GEAR C	1
2	-----	MAIN PWB	1	40	621-1751-20	POWER GEAR D	1
3	SMA-182-100	SPINDLE MOTOR-ASSY	1	41	621-1752-20	DISC STOPPER	1
4	SMA-183-100	SLED MOTOR-ASSY	1	42	621-1753-20	CLAMPER RING	1
5	345-5476-20	CUSHION RUBBER	1	43	621-1754-20	GEAR BASE	1
6	620-1023-23	CLAMPER PLATE	1	44	622-1571-21	ROLLER SHAFT	1
7	620-1026-21	SPRING PLATE	1	45	624-0020-00	LEAD SCREW	1
8	620-1596-23	CLAMPER LINK	1	46	629-0086-20	DAMPER F	2
9	620-1598-22	UPPER CHASSIS	1	47	629-0087-20	DAMPER R	1
10	620-1752-20	SENSOR ARM	1	48	716-1507-01	SCREW(M2x3)	3
11	620-1753-20	ID-LOCK PLATE	1	49	716-1670-01	SCREW(M2x4)	4
12	620-1754-20	LOWER CHASSIS	1	50	716-1733-01	SCREW(M1.7x2.3)	2
13	621-0608-21	SECOND GEAR	1	51	716-3469-01	SCREW(1.7x4)	2
14	621-0609-20	BASE GEAR	1	52	716-3473-01	SCREW(M2x3)	1
15	621-0610-20	IDLE GEAR A	1	53	716-3551-00	SCREW(M1.4x2.5)	2
16	621-0611-20	IDLE GEAR B	1	54	750-3467-21	SHIFT SPRING	1
17	621-0612-21	ROLLER GEAR A	1	55	750-3468-20	RACK SPRING	1
18	621-0620-20	THREAD GEAR A	1	56	750-3469-20	CLAMPER SPRING	1
19	621-0621-20	THREAD GEAR B	1	57	750-3470-20	ID-LOCK SPRING	1
20	621-0623-23	LS-HOLDER	1	58	750-3471-20	SENSOR SPRING	1
21	621-0624-22	GUIDE RAIL	1	59	750-3472-21	DR-SPRING F	2
22	621-0711-20	LOADING ROLLER	2	60	750-3473-20	DR-SPRING RA	1
23	621-0718-21	ROLLER GUIDE	1	61	750-3474-20	DR-SPRING RB	1
24	621-0719-20	ROLLER GEAR B	1	62	750-3475-21	DR-SPRING C	1
25	621-0720-20	ROLLER GEAR C	1	63	750-6797-20	ROLLER SPRING L	1
26	621-0721-20	ROLLER GEAR D	1	64	750-6798-20	ROLLER SPRING R	1
27	621-0728-20	STOPPER LINK	1	65	714-2003-8B	SCREW(M2x3)	2
28	621-1719-20	IDLE CASE	1	66	780-2025-00	SCREW(M2x2.5)	3
29	621-1726-20	ROLLER SLEEVE	2	67	781-1730-00	SCREW(M1.7x3)	1
30	621-1729-20	SH-BASE	1	68	803-4906-60	VINYL-COAT-WIRE(ORG)	1
31	621-1742-20	UPPER GUIDE	1	69	816-2542-01	FLAT WIRE	1
32	621-1743-20	SHIFT LEVER	1	70	816-2590-00	VINYL-COAT-WIRE(GRN)	1
33	621-1744-20	RACK	1	71	816-2591-00	VINYL-COAT-WIRE(YEL)	1
34	621-1745-20	LOCK ARM L	1	72	816-2592-00	VINYL-COAT-WIRE(BLUE)	1
35	621-1746-20	LOCK ARM R	1	73	816-2593-00	VINYL-COAT-WIRE(PUR)	1
36	621-1747-20	GEAR COVER	1	74	966-1722-20	SH-RACK-ASSY	1
37	621-1748-20	POWER GEAR A	1	75	966-1743-21	DRIVE-PLT-ASSY	1
38	621-1749-20	POWER GEAR B	1	76	969-0071-30	PICKUP-ASSY	1

ELECTRICAL PARTS LIST

CD PWB(BM1) section

REF No.	PART No.	DESCRIPTION	REF No.	PART No.	DESCRIPTION	REF No.	PART No.	DESCRIPTION
C1	168-1042-78	16V 0.1uF	C27	046-3332-78	0.033uF	R2	117-1001-15	1/8W 10 ohm
C2	163-1073-35	16V 100uF	C29	046-6822-58	6800pF	R3	033-2211-15	1/10W 220 ohm
C4	178-1052-78	1uF	C30	168-1042-78	16V 0.1uF	R5	033-0000-05	1/10W 0 ohm
C5	042-0560-85	6.3V 100uF	C31	046-4712-58	470pF	R6	033-5621-15	1/10W 5.6k ohm
C6	178-1052-78	1uF	C32	046-4712-58	470pF	R7	033-4731-15	1/10W 47k ohm
C8	178-1052-78	1uF	C33	168-1042-78	16V 0.1uF	R8	033-3341-15	1/10W 330k ohm
C10	168-1042-78	16V 0.1uF	C34	168-4732-78	16V 0.047uF	R9	033-2231-15	1/10W 22k ohm
C11	168-1042-78	16V 0.1uF	C35	168-4732-78	16V 0.047uF	R10	033-2231-15	1/10W 22k ohm
C12	045-4701-50	47pF	C36	045-1007-50	10pF	R11	033-2731-15	1/10W 27k ohm
C13	046-1532-78	0.015uF	C37	045-1007-50	10pF	R12	033-4731-15	1/10W 47k ohm
C14	168-1042-78	16V 0.1uF	C38	168-1042-78	16V 0.1uF	R13	033-2731-15	1/10W 27k ohm
C15	046-1032-78	0.015uF	C39	046-5622-58	5600pF	R14	033-1531-15	1/10W 15k ohm
C17	046-4722-58	4700pF	C40	168-1042-78	16V 0.1uF	R15	033-2731-15	1/10W 27k ohm
C18	046-1522-58	1500pF	CCT1	050-0140-63	1/32W 47k ohm x4J	R16	033-8231-15	1/10W 82k ohm
C19	168-1042-78	16V 0.1uF	D1	001-0367-91	1SS226	R17	033-2731-15	1/10W 27k ohm
C20	168-1042-78	16V 0.1uF	IC1	051-6079-90	BA5830FPG	R18	033-8231-15	1/10W 82k ohm
C21	046-6812-58	680pF	IC2	051-6399-00	TC94A15F	R19	033-1051-15	1/10W 1M ohm
C22	168-1042-78	16V 0.1uF	J101	074-1228-79	29P	R20	119-2221-15	1/10W 2.2k ohm
C23	046-1532-78	0.015uF	J201	074-1138-65	15P	X2	061-3534-90	16.92MHz
C24	168-1042-78	16V 0.1uF	J301	074-1138-60	10P	PWB	039-2741-20	PWB(WITHOUT COMPONENT)
C25	045-6801-50	68pF	Q1	131-1188-50	2SB1188PQR			
C26	168-1042-78	16V 0.1uF	R1	117-6811-15	1/8W 680 ohm			

Sensor PWB(BM2) section

REF No.	PART No.	DESCRIPTION	REF No.	PART No.	DESCRIPTION	REF No.	PART No.	DESCRIPTION
D1	001-7058-90	AN1105W-RR	Q1	060-4015-91	PS1192HB	S2	013-7413-50	LIMIT
D2	001-7058-90	AN1105W-RR	Q2	060-4015-91	PS1192HB	PWB	039-2675-20	PWB(WITHOUT COMPONENT)
J1	074-1138-60	10P	S1	013-7414-50	CHUCKING			