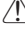

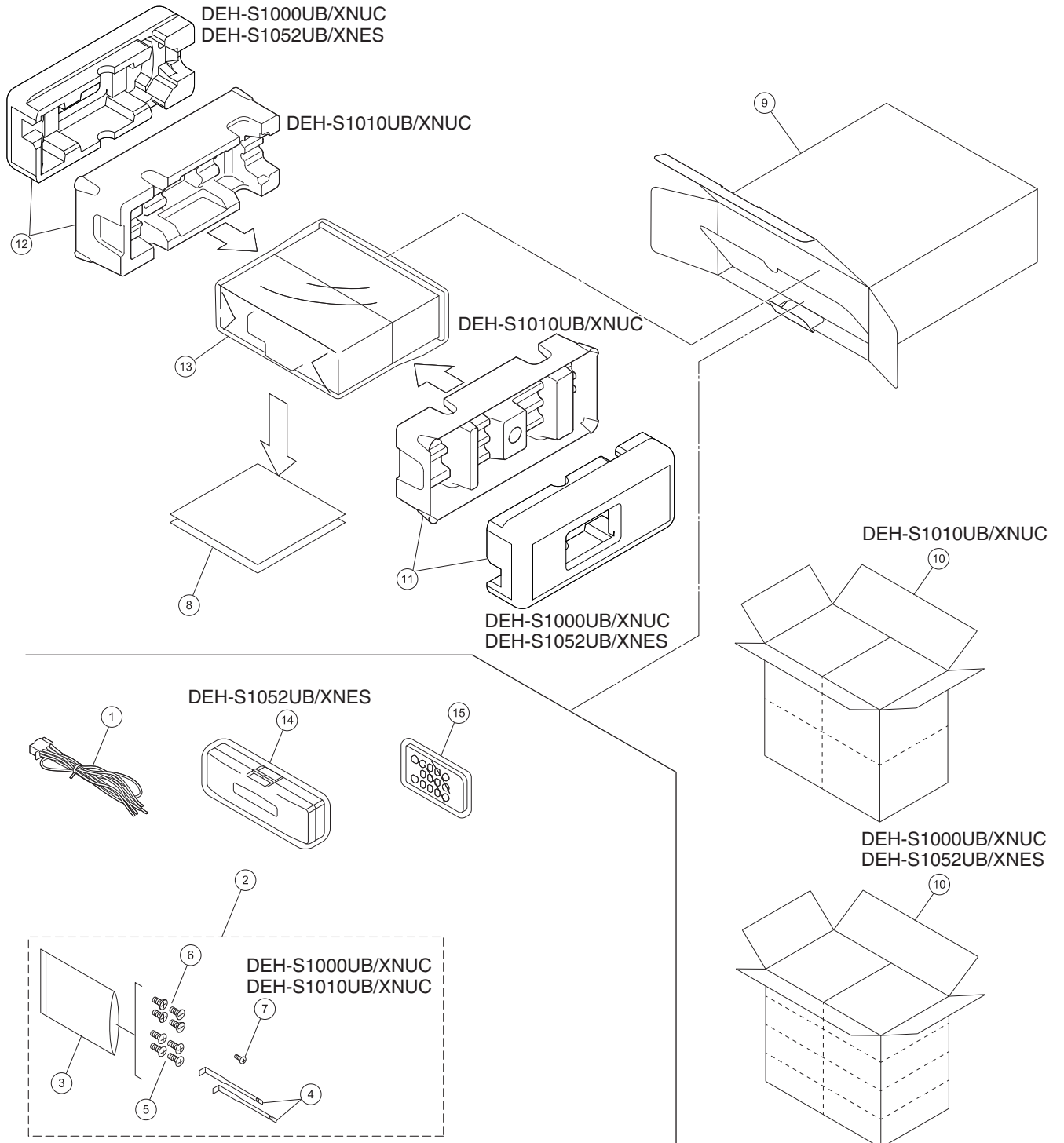


9. EXPLODED VIEWS AND PARTS LIST

- NOTES :**
- Parts marked by " * " are generally unavailable because they are not in our Master Spare Parts List.
 - The  mark found on some component parts indicates the importance of the safety factor of the part. Therefore, when replacing, be sure to use parts of identical designation.
 - Screw adjacent to  mark on the product are used for disassembly.
 - For the applying amount of lubricants or glue, follow the instructions in this manual. (In the case of no amount instructions, apply as you think it appropriate.)

9.1 PACKING SECTION



(1) PACKING SECTION PARTS LIST

<u>Mark No.</u>	<u>Description</u>	<u>Part No.</u>	<u>Mark No.</u>	<u>Description</u>	<u>Part No.</u>
1	Cord Assy	CDP1480	10	Contain Box	See Contrast table (2)
2	Accessory Assy	See Contrast table (2)	11	Protector	See Contrast table (2)
* 3	Polyethylene Bag	CEG1160	12	Protector	See Contrast table (2)
4	Handle	QNC3021	13	Polyethylene Bag	See Contrast table (2)
5	Screw	CBA2384	14	Case Assy	See Contrast table (2)
6	Screw	See Contrast table (2)	15	Card Remote Control Unit	CXE9606
7	Screw	See Contrast table (2)			
8-1	Owner's Manual	See Contrast table (2)			
* 8-2	Warranty Card	See Contrast table (2)			
9	Unit Box	See Contrast table (2)			

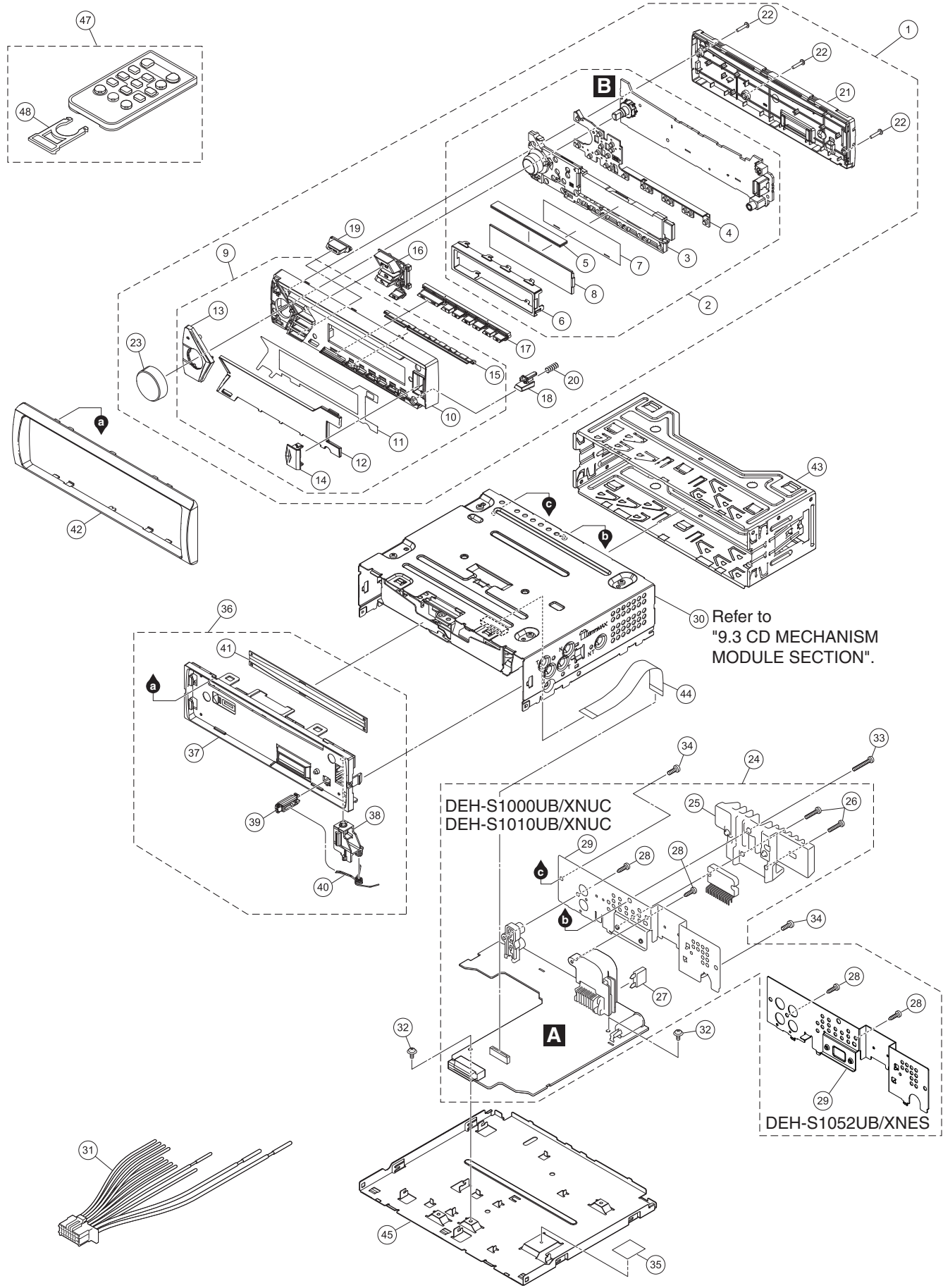
(2) CONTRAST TABLE

DEH-S1000UB/XNUC, DEH-S1010UB/XNUC and DEH-S1052UB/XNES are constructed the same except for the following:

Mark	No.	Symbol and Description	DEH-S1000UB/XNUC	DEH-S1010UB/XNUC	DEH-S1052UB/XNES
	2	Accessory Assy	QEA3337	QEA3337	QEA3338
	6	Screw	CBA2383	CBA2383	Not used
	7	Screw	BPZ20P060FTC	BPZ20P060FTC	Not used
	8-1	Owner's Manual	QRD3501	QRD3501	QRD3503
*	8-2	Warranty Card	QRY3001	QRY3001	Not used
	9	Unit Box	QHG4173	QHG4174	QHG4180
	10	Contain Box	QHL4173	QHL4174	QHL4180
	11	Protector	QHP3048	CHP4103	QHP3048
	12	Protector	QHP3048	CHP4104	QHP3048
	13	Polyethylene Bag	CEG1173	CEG1173	QEG3001
	14	Case Assy	Not used	Not used	QXA3129

Owner's Manual, Installation Manual

Part No.	Language
QRD3501	English, French, Spanish(Espanol)
QRD3503	English, Traditional Chinese, Persian, Arabic



(1) EXTERIOR SECTION PARTS LIST

<u>Mark No.</u>	<u>Description</u>	<u>Part No.</u>	<u>Mark No.</u>	<u>Description</u>	<u>Part No.</u>
A	1 Detach Grille Assy	See Contrast table (2)	26	Screw	BSZ26P120FTC
	2 Keyboard Unit	See Contrast table (2)	⚠ 27	Fuse (10 A)	YEK5001
	3 Lighting Conductor	QNV3149	28	Screw	BPZ26P080FTC
	4 Contact Rubber	QNV3144	29	Holder	See Contrast table (2)
	5 Rubber Connector	QNV3129	30	CD Mechanism Module (11.6VA_T07)	CXK5808
	6 Holder	QNC3130		CD Mechanism Module (S11.6_T07)	CXK5807
	7 Sheet	QNM3159	31	Cord Assy	CDP1480
	8 Segment LCD (V1801)	CAW2056	32	Screw	ASZ26P050FTC
	9 Grille Unit	See Contrast table (2)	33	Screw	BSZ26P120FTC
*	10 Grille	QNS4165	34	Screw	BSZ26P060FTC
B	* 11 DS Tape	QNM3205	35	Sheet	See Contrast table (2)
	* 12 Plate	QNS4166	36	Panel Assy	See Contrast table (2)
	* 13 Button(EJECT)	QAC3275	37	Panel	QNS3126
	* 14 Door	See Contrast table (2)	38	Arm	QNV3025
	* 15 Lighting Conductor	QNV3143	39	Button	QNV3026
	16 Button(SRC)	QAC3278	40	Spring	QBH3001
	17 Button(TRACK, 1-6)	QAC3279	41	Cover	QNM3029
	18 Button(DETACH)	QAC3280	42	Panel	QNS3568
	19 Button(EQ)	QAC3283	43	Holder	QNC3020
C	20 Spring	CBH2210	44	FFC	QDE3029
	21 Cover	QNS4167	45	Case	See Contrast table (2)
	22 Screw	BPZ20P100FTC	46	•••••	
	23 Knob Unit	QXA5051	47	Card Remote Control Unit	CXE9606
	24 Tuner Amp Unit	See Contrast table (2)	48	Cover	CNU3681
	25 Heat Sink	See Contrast table (2)			

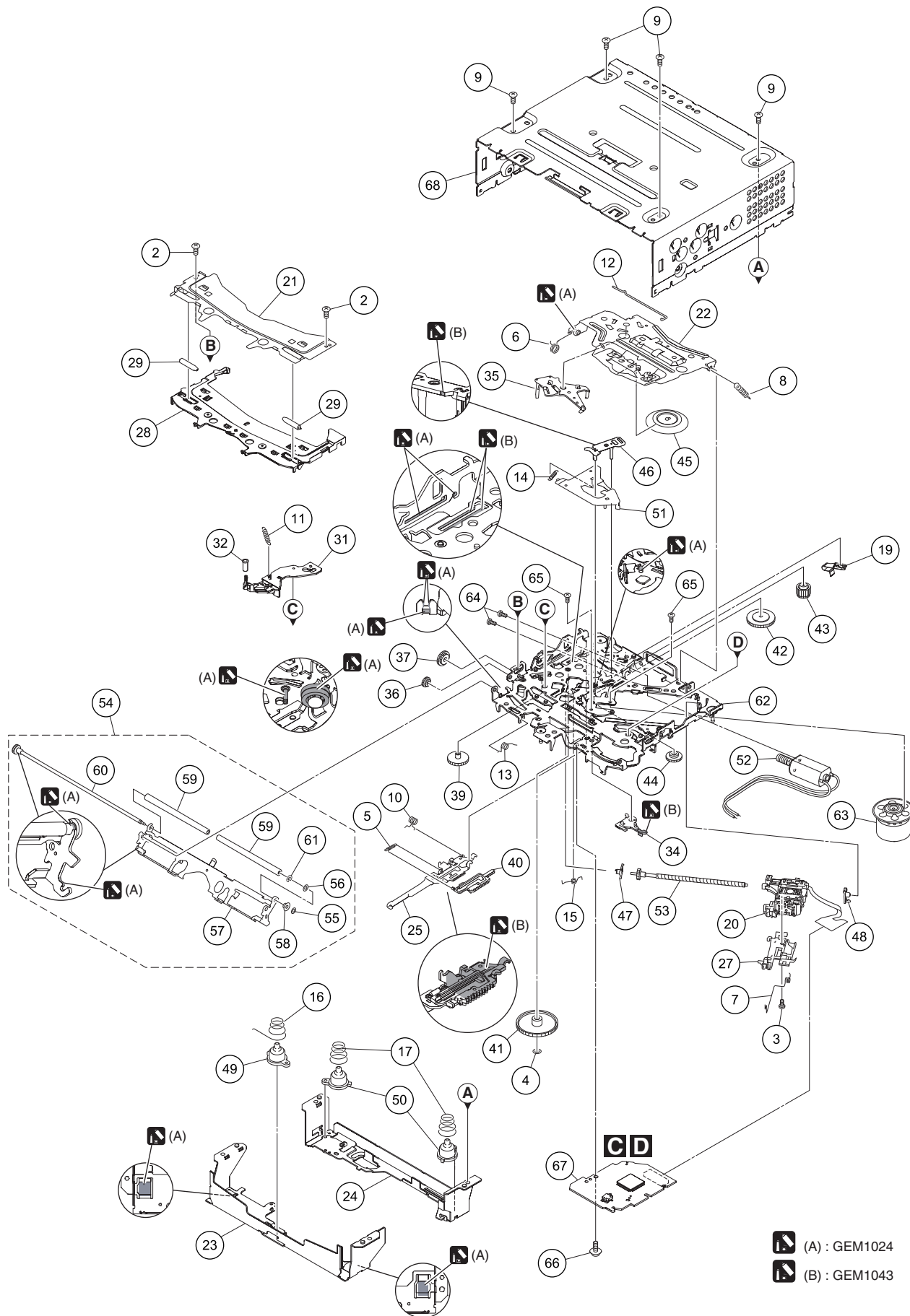
Notes: For No.30, please refer to "1.3 NOTES ON REPLACING PARTS" for part distinguish.

(2) CONTRAST TABLE

DEH-S1000UB/XNUC, DEH-S1010UB/XNUC and DEH-S1052UB/XNES are constructed the same except for the following:

Mark	No.	Symbol and Description	DEH-S1000UB/XNUC	DEH-S1010UB/XNUC	DEH-S1052UB/XNES
	1	Detach Grille Assy	QXA5075	QXA5076	QXA5082
	2	Keyboard Unit	QWM4733	QWM4733	QWM4664
	9	Grille Unit	QXA5125	QXA5126	QXA5132
*	14	Door	QAT3028	QAT3028	QAT3029
	24	Tuner Amp Unit	QWM4715	QWM4739	QWM4722
	25	Heat Sink	QNR3010	QNR3010	QNR3002
	29	Holder	QNC3051	QNC3051	QNC3049
	35	Sheet	QNM3175	QNM3175	QNM3135
	36	Panel Assy	QXA3261	*CXE3802	QXA3261
	45	Case	QNB3043	QNB3043	QNB3033

9.3 CD MECHANISM MODULE



DEH-S1000UB/XNUC

(A) : GEM1024
 (B) : GEM1043

CD MECHANISM MODULE SECTION PARTS LIST

	<u>Mark No.</u>	<u>Description</u>	<u>Part No.</u>	<u>Mark No.</u>	<u>Description</u>	<u>Part No.</u>
	1	•••••				
A	2	Screw	BSZ20P040FTC	36	Gear	CNW1180
	3	Screw(M2 x 4)	CBA1835	37	Gear	CNW1181
	4	Washer	CBF1038	38	•••••	
	5	Spring	CBH3010	39	Gear	CNW1183
				40	Rack	CNW1184
	6	Spring	CBH2855			
	7	Spring	CBH2856	41	Gear	CNW1185
	8	•••••		42	Gear	CNW1186
	9	Screw	BSZ26P060FTC	43	Gear	CNW1187
	10	Spring	CBH3011	44	Gear	CNW2287
				45	Clamper	CNW1190
B	11	Coil Spring	CBH3095			
	12	Spring	CBH3014	46	Arm	CNW1192
	13	Spring	CBH3145	47	Holder	CNW1193
	14	Spring	CBH3016	48	Holder	CNW1194
	15	Spring	CBH3017	49	Damper	CNW1197
				50	Damper	CNW1198
	16	Spring	CBH3086			
	17	Spring	CBH3019	51	Arm	CNW1726
	18	•••••		52	Motor Unit(M2)(LOAD/CRG)	CXC4026
	19	Leaf Spring	CBL1824	53	Screw Unit	CXC8894
C	20	Pickup Unit(P11)(Service) for CXK5808 CXX4754 Pickup Unit(P10.6)(Service) for CXK5807 CXX3556		54	Arm Assy	CXE8953
				55	Washer	CBF1037
	21	Bracket	CND4553	56	Washer	CBF1038
	22	Arm	CND7608	57	Arm	CND6242
	23	Bracket	CND6127	58	Collar	CNW2444
	24	Bracket	CND5710	59	Roller	CNW2500
	25	Lever	CND6834	60	Gear Unit	CXE8952
	26	•••••		61	Washer	YE15FTC
	27	Rack	CNV8342	62	Chassis Unit	CXE9531
D	28	Guide	CNW3489	63	Motor Unit(M1)(SPDL)	CXE2273
	29	Roller	CNW1172	64	Screw	JFZ20P025FTC
	30	•••••		65	Screw	JGZ17P022FTC
	31	Arm	CNW2241	66	Screw	EBA1028
	32	Roller	CNW1175	67	CD Core Unit (S11.6VA)(for CXK5808) CWX4269 CD Core Unit (S11.6STD)(for CXK5807) CWX4023	
	33	•••••		68	Chassis	CNA3373
	34	Arm	CNW1177			
	35	Arm	CNW1178			

Notes: For No.20 and 67, please refer to "1.3 NOTES ON REPLACING PARTS" for part distinguish.

12. ELECTRICAL PARTS LIST

NOTE:

- Parts whose parts numbers are omitted are subject to being not supplied.
- The part numbers shown below indicate chip components.

Chip Resistor

RS1/○S○○○○J,RS1/○○S○○○○J

Chip Capacitor (except for CQS.....)

CKS....., CCS....., CSZS.....

- Parts marked by " * " are generally unavailable because they are not in our Master Spare Parts List.
- The ⚠ mark found on some component parts indicates the importance of the safety factor of the part. Therefore, when replacing, be sure to use parts of identical designation.
- The expression of the unit in this manual is shown by u instead of μ. Please do not make a mistake.

<u>Circuit Symbol and No.</u>	<u>Part No.</u>	<u>Circuit Symbol and No.</u>	<u>Part No.</u>
A:DEH-S1000UB/XNUC		D 101	Diode D1F60-5053
B:DEH-S1010UB/XNUC		D 102	Diode D1F60-5053
C:DEH-S1052UB/XNES		D 111	Diode DZ2J068M0
Unit Number: QWM4715(A)		D 152	Diode RR264MM-400TF
Unit Number: QWM4739(B)		D 153	Schottky Diode RB162M-40
Unit Number: QWM4722(C)		D 154	Diode RR264MM-400TF
Unit Name : Tuner Amp Unit		D 155	Schottky Diode DB2J41100
Unit Number: QWM4733(A,B)		D 156	Diode RB056L-40
Unit Number: QWM4664(C)		D 157	Schottky Diode CMS30I30A
Unit Name : Keyboard Unit		D 301	Diode DZ2J100M0
Unit Number: CWX4269		D 302	Diode DZ2S068C
Unit Name : CD Core Unit(S11.6VA)		D 303	Diode DZ2S068C
Unit Number: CWX4023		D 701	Diode DZ2S068C
Unit Name : CD Core Unit(S11.6)		D 702	Diode DZ2S068C
		D 802	Diode DZ2S068C
		D 803	Diode DZ2S068C
		D 804	Diode DZ2S068C
		D 805	Diode DZ2S068C
		D 806	Diode DZ2S068C

Notes:

For CD Core Unit, please refer to "1.3 NOTES ON REPLACING PARTS" for part distinguish.

A

Unit Number: QWM4715(A)
Unit Number: QWM4739(B)
Unit Name : Tuner Amp Unit

MISCELLANEOUS

IC 151	Power supply IC	BD49101AEFS	D 807	Diode	DZ2S068C
IC 321	Interface IC	STCC2540IQ	D 815	Diode	DZ2S068C
IC 351	Blank Flash IC	R5S726A0D216FP	D 816	Diode	DZ2S068C
IC 361	IC	S-80827CNMC-B8M	D 817	Diode	DZ2S068C
IC 371	IC	QVQ1039	D 911	Diode	RR264MM-400TF
IC 551	E-VOL System LSI	PM9013A	D 912	Diode	RR264MM-400TF
IC 601	Tuner IC	TEF6686HN-V102	L 101	Choke Coil	CTH1620
IC 801	Logic IC	TC7SET08FUS3	L 151	SMD SPL Inductor	CTH1521
IC 851	Power Amp IC	PAL014A	L 152	SMD SPL Inductor	CTH1584
Q 111	Bipolar Transistor	LSCR523UB	L 193	Inductor	CTF1786
Q 151	Power MOS FET	RRR040P03	L 301	Common Mode Choke Coil	ATH7015
Q 301	Transistor	2SAR502UB	L 552	Inductor	CTF1736
Q 302	Transistor	2SCR514PGZE	L 602	Inductor	CTF1389
Q 303	Transistor	LTC143EUB	L 605	Inductor	LCYC150K1608
Q 752	Transistor	EMH53	L 606	Inductor	CTF1786
Q 901	Transistor	EMD52	L 610	Inductor	LCMAR27J1608
			L 613	Inductor	CTF1786
			L 701	Inductor	CTF1389
			L 702	Chip Beads	VTL1133
			L 703	Chip Beads	VTL1133
			L 704	Chip Beads	VTL1133
			L 801	Common Mode Choke Coil	ATH7015
			T 601	Variable Coil	CTC1215

<u>Circuit Symbol and No.</u>	<u>Part No.</u>	<u>Circuit Symbol and No.</u>	<u>Part No.</u>
X 351	Crystal Resonator 12.000000 MHz	R 357	RS1/16SS473J
X 353	Resonator 16.93 MHz	R 359	RS1/16SS0R0J
X 601	Crystal Resonator	R 360	RS1/16SS0R0J
P 601	Surge Absorber		
△ P753	Fuse 3.0 A	R 363	RS1/16SS221J
		R 364	RS1/16SS104J
VA801	SMD Varistor	R 365	RS1/16SS221J
VA802	SMD Varistor	R 366	RS1/16SS221J
CN701	Connector		
CN801	Connector	R 368	RS1/16SS102J
JA101	Plug	R 369	RS1/16SS473J
		R 370	RS1/16SS473J
JA601	Antenna Jack	R 371	RS1/16SS473J
JA751	Jack	R 373	RS1/16SS152J
		R 374	RS1/16SS153J
RESISTORS		R 375	RS1/16SS153J
R 111	RS1/16SS223J	R 376	RS1/16SS473J
R 112	RS1/16SS473J	R 377	RS1/16SS103J
R 113	RS1/16SS682J	R 378 (B)	RS1/16SS473J
R 114	RS1/4SA102J		
R 151	RS1/16SS8202D	R 379 (A)	RS1/16SS473J
		R 380	RS1/16SS103J
R 156	RS1/16SS102J	R 383	RS1/16SS222J
R 158	RS1/16SS2403D	R 384	RS1/16SS473J
R 159	RS1/16SS7502D	R 385	RAB4CQ473J
R 160	RS1/16SS103J		
R 161	RS1/16SS4703D	R 386	RS1/16SS473J
		R 387	RS1/16SS473J
R 162	RS1/16SS4303D	R 388	RS1/16SS473J
R 163	RS1/16SS3903D	R 389	RS1/16SS473J
R 164	RS1/16SS6202D	R 390	RS1/16SS473J
R 165	20 mohm CCN1401		
R 167	RS1/16SS102J	R 391	RS1/16SS221J
		R 392	RS1/16SS221J
R 168	RS1/16SS102J	R 393	RS1/16SS221J
R 169	RS1/16SS102J	R 394	RS1/16SS221J
R 172	RS1/16SS393J	R 395	RS1/16SS221J
R 173	RS1/16SS4703D		
R 174	RS1/16SS1503D	R 396	RS1/16SS221J
		R 397	RS1/16SS473J
R 175	RS1/16SS393J	R 398	RS1/16SS473J
R 176	RS1/16SS103J	R 399	RS1/16SS101J
R 177	RS1/16SS472J	R 400	RS1/16SS473J
R 178	RS1/16SS1003D		
R 179	RS1/16SS7503D	R 401	RS1/16SS102J
		R 402	RS1/16SS473J
R 180	RS1/16SS1603D	R 403	RS1/16SS473J
R 182	RS1/16SS680J	R 404	RS1/16SS473J
R 184	RS1/16SS4701F	R 409	RS1/16SS472J
R 185	RS1/16SS102J		
R 187	RS1/16SS1203D	R 411	RS1/16SS472J
		R 412	RS1/16SS104J
R 188	RS1/16SS1802D	R 413	RS1/16SS101J
R 189	RS1/16SS6802D	R 414	RS1/16SS101J
R 190	RS1/16SS3903D	R 415	RS1/16SS101J
R 192	RS1/16SS102J		
R 301	RS1/16SS473J	R 416	RS1/16SS102J
		R 417	RS1/16SS101J
R 303	RS1/16SS103J	R 418	RS1/16SS102J
R 304	RS1/16SS272J	R 419	RS1/16SS102J
R 305	RS1/16SS473J	R 420	RS1/16SS101J
R 308	RS1/10SR102J		
R 323	RS1/16SS2702F	R 421	RS1/16SS473J
		R 423	RS1/16SS222J
R 325	RS1/16SS103J	R 424	RS1/16SS222J
R 326	RS1/16SS103J	R 425	RS1/16SS103J
R 327	RS1/16SS0R0J	R 428	RS1/16SS0R0J
R 328	RS1/16SS103J		
R 337	RS1/16SS0R0J	R 432	RS1/16SS103J
		R 509	RS1/16SS473J
R 355	RS1/16SS103J		

Circuit Symbol and No.Part No.Circuit Symbol and No.Part No.

R 510 RS1/16SS473J
 R 603 RS1/16SS391J
 R 604 RS1/16SS105J

R 605 RS1/16SS105J
 R 606 RS1/16SS101J
 R 607 RS1/16SS101J
 R 608 RS1/16SS103J
 R 610 RS1/16SS103J

R 617 RS1/16SS0R0J
 R 620 RS1/16SS0R0J
 R 637 RS1/16SS472J
 R 638 RS1/16SS472J
 R 651 RS1/16SS0R0J

R 652 RS1/16SS0R0J
 R 653 RS1/10SR0R0J
 R 701 RS1/16SS473J
 R 702 RS1/16SS104J
 R 704 RS1/16SS104J

R 706 RS1/16SS221J
 R 707 RS1/16SS221J
 R 708 RS1/16SS101J
 R 709 RS1/16SS221J
 R 710 RS1/16SS101J

R 711 RS1/16SS102J
 R 715 RS1/16SS331J
 R 716 RS1/16SS331J
 R 717 RS1/16SS331J
 R 718 RS1/16SS221J

R 719 RS1/16SS104J
 R 721 RS1/16SS472J
 R 722 RS1/16SS472J
 R 723 RS1/16SS472J
 R 724 RS1/16SS0R0J

R 755 RS1/16SS821J
 R 756 RS1/16SS821J
 R 757 RS1/16SS223J
 R 758 RS1/16SS223J
 R 764 RS1/16SS0R0J

R 801 RS1/10SR222J
 R 803 RS1/16SS223J
 R 804 RS1/16SS223J
 R 805 RS1/10SR101J
 R 806 RS1/10SR101J

R 807 RS1/10SR101J
 R 808 RS1/10SR222J
 R 809 RS1/10SR220J
 R 810 RS1/10SR220J
 R 813 RS1/10SR222J

R 814 RS1/10SR222J
 R 815 RS1/16SS822J
 R 816 RS1/10SR222J
 R 817 RS1/10SR222J
 R 841 RS1/16SS472J

R 859 RS1/16SS103J
 R 872 RS1/10SR0R0J
 R 901 RS1/16SS103J
 R 902 RS1/16SS221J
 R 903 RS1/16SS223J

R 914 RS1/10SR0R0J

CAPACITORS

C 101 2 200 uF/16 V

C 111

C 151

C 152 1 uF

C 153 10 uF

C 154 1 uF/10 V

C 156

C 157 10 uF

C 158 1 uF

C 160 10 uF

C 162

C 163

C 164

C 165

C 166 10 uF

C 167 10 uF

C 169 10 uF

C 171 10 uF

C 172 10 uF

C 174

C 177 10 uF

C 178

C 179

C 180 10 uF

C 181

C 183 4.7 uF

C 185

C 186

C 187

C 188

C 192 22 uF

C 195 1 uF

C 196 1 uF

C 197

C 198

C 199

C 253

C 255 2.2 uF

C 302

C 303

C 304

C 321

C 322 10 uF

C 323 10 uF

C 351

C 352

C 353

C 354

C 357

C 359 1 uF/10 V

C 361

C 362

C 363

C 365

C 366

C 368

C 369

C 375

CCH1405

CKSRYB103K50

CEVW221M16

CCG1393

CCG1236

DCH1266

CEAT102M16

CCG1236

DCH1246

CCG1236

CCSSCH391J50

CEVQW221M6R3

CCSSCH471J50

CCSSCH102J50

CCG1192

CCG1192

CCG1192

CCG1236

CCG1236

CKSRYB105K10

CCG1192

CCSSCH391J50

CKSSYB102K50

CCG1192

CEVQW221M6R3

CCG1212

CEVW221M10

CCSSCH331J50

CCSRCH101J50

CKSRYB105K10

CCG1254

CCG1382

DCH1246

CKSRYX105K16

CEAT102M16

CKSSYB122K50

CKSSYB104K10

CCG1205

CCSRCH101J50

CKSSYB104K16

CKSRYB104K16

CKSSYB104K10

CCG1192

DCH1201

CKSSYB104K10

CKSSYB104K10

CKSSYB104K10

CKSSYB104K10

CKSSYB104K10

DCH1266

CKSSYB104K10

CKSSYB104K10

CKSSYB104K10

CCSSCH120J50

CCSSCH120J50

CKSSYB102K50

CKSSYB104K10

CCSSCH120J50

Circuit Symbol and No.**Part No.****Circuit Symbol and No.****Part No.**

	D 154	Diode	RR264MM-400TF	R 167	RS1/16SS102J
	D 155	Schottky Diode	DB2J41100		
	D 156	Diode	RB056L-40	R 168	RS1/16SS102J
A	D 157	Schottky Diode	CMS30I30A	R 169	RS1/16SS102J
	D 301	Diode	DZ2J100M0	R 172	RS1/16SS393J
				R 173	RS1/16SS4703D
	D 351	Schottky Diode	RB751SM-40	R 174	RS1/16SS1503D
	D 352	Schottky Diode	RB751SM-40		
	D 802	Diode	DZ2S068C	R 175	RS1/16SS393J
	D 803	Diode	DZ2S068C	R 176	RS1/16SS103J
	D 804	Diode	DZ2S068C	R 177	RS1/16SS472J
				R 178	RS1/16SS1003D
	D 805	Diode	DZ2S068C	R 179	RS1/16SS7503D
	D 806	Diode	DZ2S068C		
	D 807	Diode	DZ2S068C	R 180	RS1/16SS1603D
B	D 911	Diode	RR264MM-400TF	R 182	RS1/16SS820J
	D 912	Diode	RR264MM-400TF	R 184	RS1/16SS682J
				R 185	RS1/16SS102J
	L 101	Choke Coil	CTH1620	R 187	RS1/16SS1203D
	L 151	SMD SPL Inductor	CTH1521		
	L 152	SMD SPL Inductor	CTH1584	R 188	RS1/16SS1802D
	L 552	Inductor	CTF1736	R 189	RS1/16SS6802D
	L 603	Chip Coil	LCTAWR27J2520	R 190	RS1/16SS3903D
				R 192	RS1/16SS102J
	L 604	Chip Coil	LCTAW3R3J2520	R 193	RS1/16SS0R0J
	L 606	Inductor	CTF1786		
	L 609	Inductor	CTF1786	R 194	RS1/16SS0R0J
	L 610	Inductor	LCMAR27J1608	R 301	RS1/16SS473J
C	L 611	SMD SPL Inductor	LCYAR82J2016	R 303	RS1/16SS103J
				R 304	RS1/16SS272J
	L 613	Inductor	CTF1786	R 305	RS1/16SS473J
	L 701	Inductor	CTF1389		
	L 702	Chip Beads	VTL1133	R 308	RS1/10SR102J
	L 703	Chip Beads	VTL1133	R 329	RS1/10SR0R0J
	L 704	Chip Beads	VTL1133	R 330	RS1/16SS0R0J
				R 331	RS1/16SS0R0J
	L 801	Common Mode Choke Coil	ATH7015	R 332	RS1/10SR0R0J
	T 601	Variable Coil	CTC1215		
	X 351	Crystal Resonator 12.000000 MHz	CSS1876	R 334	RS1/16SS0R0J
	X 353	Resonator 16.93 MHz	CSS1794	R 335	RS1/16SS0R0J
	X 601	Crystal Resonator	CSS1868	R 355	RS1/16SS103J
				R 357	RS1/16SS473J
D	P 601	Surge Absorber	IMSA-6803-01Y900	R 359	RS1/16SS0R0J
	△ P753	Fuse 3.0 A	CEK1404		
	VA801	SMD Varistor	MLV0402ES012V0010N	R 360	RS1/16SS0R0J
	VA802	SMD Varistor	MLV0402ES012V0010N	R 363	RS1/16SS221J
	CN701	Connector	VKN1192	R 364	RS1/16SS104J
				R 365	RS1/16SS221J
	CN801	Connector	CKS6452		
	JA101	Plug	CKM1624	R 366	RS1/16SS221J
	JA601	Antenna Jack	CKX1104	R 368	RS1/16SS102J
	JA751	Jack	CKB1109	R 369	RS1/16SS473J
	JA782	Jack	CKS6437	R 370	RS1/16SS473J
E	RESISTORS			R 371	RS1/16SS473J
	R 111		RS1/16SS223J	R 373	RS1/16SS152J
	R 112		RS1/16SS473J	R 374	RS1/16SS153J
	R 113		RS1/16SS682J	R 375	RS1/16SS153J
	R 114		RS1/4SA102J	R 376	RS1/16SS473J
	R 151		RS1/16SS8202D		
				R 377	RS1/16SS103J
	R 156		RS1/16SS102J	R 379	RS1/16SS473J
	R 158		RS1/16SS2403D	R 380	RS1/16SS103J
	R 159		RS1/16SS7502D	R 383	RS1/16SS222J
	R 160		RS1/16SS103J	R 384	RS1/16SS473J
	R 161		RS1/16SS4703D		
				R 385	RAB4CQ473J
F	R 162		RS1/16SS4303D	R 386	RS1/16SS473J
	R 163		RS1/16SS3903D	R 387	RS1/16SS473J
	R 164		RS1/16SS6202D	R 388	RS1/16SS473J
	R 165	20 mohm	CCN1401	R 389	RS1/16SS473J

Circuit Symbol and No.

Part No.

Circuit Symbol and No.

Part No.

A	C 171	10 uF	CCG1236	C 555		CKSRYB105K10
	C 172	10 uF	CCG1236	C 560		CKSRYB105K10
	C 174		CKSRYB105K10	C 561		CKSRYB105K10
				C 562		CKSRYB105K10
	C 177	4.7 uF	CCG1222			
	C 178		CCSSCH391J50	C 563	10 uF	CCG1192
	C 179		CKSSYB102K50	C 564		CEVW470M16
	C 180	10 uF	CCG1192	C 565		CKSSYB104K10
	C 181		CEVQW221M6R3	C 568		CKSSYB104K10
				C 569		CKSSYB104K10
	C 183	4.7 uF	CCG1212			
	C 185		CEVW221M10	C 570	10 uF	CCG1192
	C 186		CCSSCH331J50	C 573	1 uF/10 V	DCH1266
	C 187		CCSRCH101J50	C 574	1 uF/10 V	DCH1266
	C 192	22 uF	CCG1254	C 575	10 uF	CCG1192
				C 576		CKSSYB104K10
B	C 194		CKSRYB103K50			
	C 195	1 uF	CCG1382	C 577	10 uF	CCG1192
	C 196	1 uF	DCH1246	C 583	10 uF	CCG1192
	C 197		CKSRYX105K16	C 584		CKSSYB104K10
	C 199		CKSSYB122K50	C 585		CKSSYB104K10
				C 586		CKSSYB104K10
	C 253		CKSSYB104K10			
	C 255	2.2 uF	CCG1205	C 587		CKSSYB102K50
	C 302		CCSRCH101J50	C 589	1 uF/10 V	DCH1266
	C 303		CKSSYB104K16	C 590		CKSRYB105K10
	C 304		CKSRYB104K16	C 602		CCSSCK2R0C50
				C 603		CCSSCK1R0C50
C	C 351		CKSSYB104K10			
	C 352		CKSSYB104K10	C 604		CCSSCK1R0C50
	C 353		CKSSYB104K10	C 605		CCSSCH120J50
	C 354		CKSSYB104K10	C 607		CKSSYB102K50
	C 357		CKSSYB104K10	C 610		CKSSYB152K50
				C 611		CCSSCH331J50
	C 359	1 uF/10 V	DCH1266			
	C 361		CKSSYB104K10	C 612		CCSSCH220J50
	C 362		CCSSCH101J50	C 613		CCSSCH100D50
	C 363		CKSSYB102K50	C 615		CKSSYB104K10
	C 364		CCSSCH120J50	C 617		CKSSYB102K50
				C 618		CKSSYB224K6R3
D	C 366		CCSSCH120J50			
	C 368		CKSSYB102K50	C 620	1 uF/10 V	DCH1266
	C 369		CKSSYB104K10	C 621		CCSSCH390J50
	C 375		CCSSCH120J50	C 624	2.2 uF	CCG1205
	C 376		CCSSCH120J50	C 626	10 uF	CCG1192
				C 627		CCSSCH330J50
	C 377		CKSRYB105K10			
	C 379		CCSSCJ3R0C50	C 630	1 uF/10 V	DCH1266
	C 381		CKSSYB104K10	C 631		CCSSCH391J50
	C 383		CKSSYB104K10	C 632		CKSRYB104K16
	C 384		CCSSCH220J50	C 633		CKSRYB104K16
				C 635		CCSSCH101J50
	C 385		CKSSYB104K10			
	C 386		CKSSYB104K10	C 639		CCSSCH471J50
E	C 387		CKSSYB104K10	C 701		CKSSYB103K16
	C 389		CKSSYB104K10	C 702		CKSSYB103K16
	C 390		CCSSCH100D50	C 709		CKSSYB104K10
				C 751	10 uF	CCG1192
	C 391		CCSSCH220J50			
	C 392		CCSSCH220J50	C 752	10 uF	CCG1192
	C 393		CCSSCH220J50	C 755	10 uF	DCH1201
	C 394		CKSSYB104K10	C 756	10 uF	CCG1192
	C 395		CKSSYB103K16	C 760		CKSSYB104K10
				C 787		CKSRYB104K16
	C 398	1 uF	DCH1246			
	C 399		CKSSYB104K10	C 788		CKSRYB104K16
	C 400		CCSSCH100D50	C 801		CCSRCH102J50
F	C 551		CKSRYB105K10	C 803		CKSRYB105K10
	C 553		CKSRYB105K10	C 804		CKSRYB105K10
				C 806		CKSRYB104K16
	C 554	1 uF	DCH1246			

<u>Circuit Symbol and No.</u>	<u>Part No.</u>	<u>Circuit Symbol and No.</u>	<u>Part No.</u>
C 807	CKSBYB105K10	CN1941 Connector	CKS6451
C 809	CCSRCH221J50		
C 810	CCSRCH221J50	JA 1901 Connector	CKS6443
C 811	CKSSYB104K10	JA 1921 Jack	CKN1111
C 851	CKSBYB474K10	V 1801 LCD	CAW2056
C 853	CKSBYB474K10		
C 855	CKSBYB474K10		
C 857	CKSBYB474K10		
C 863 2.2 uF	CCG1205		
C 864	CKSBYX104K50		
C 866	CKSBYX105K16		
C 868 10 uF/16 V	DCH1263		
C 901	CKSBYB105K10		
C 913	CKSBYX104K50		

B

Unit Number: QWM4733(A,B)

Unit Number: QWM4664(C)

Unit Name : Keyboard Unit

MISCELLANEOUS

IC 1801 IC	PD6586A8	R 1805	RS1/10SR473J
IC 1851 IC	SIR8440B5	R 1806	RS1/10SR473J
Q 1953 Bipolar Transistor(C)	HN1C01FUS1	R 1807	RS1/10SR473J
D 1924 Diode	DZ2S068C	R 1808	RS1/10SR473J
D 1951 LED	SWBA05(FI231719)	R 1823	RS1/10SR273J
D 1952 LED(C)	FC-F1608BAK5	R 1853	RS1/10SR101J
D 1953 LED(C)	FC-F1608BAK5	R 1941	RS1/10SR222J
D 1954 LED(C)	FC-F1608BAK5	R 1942	RS1/10SR222J
D 1955 LED(C)	FC-F1608BAK5	R 1951	RS1/4SA181J
D 1956 LED(C)	FC-F1608BAK5	R 1952	RS1/4SA101J
D 1957 LED(C)	FC-F1608BAK5	R 1954 (C)	RS1/10SR272J
D 1958 LED(C)	FC-F1608BAK5	R 1958 (C)	RS1/10SR471J
D 1959 LED(C)	FC-F1608BAK5	R 1960 (C)	RS1/10SR222J
D 1960 LED(C)	FC-F1608BAK5	R 1962 (C)	RS1/10SR222J
D 1961 LED(C)	FC-F1608BAK5	R 1964 (C)	RS1/10SR222J
D 1962 LED(C)	FC-F1608BAK5	R 1966 (C)	RS1/10SR222J
D 1963 LED(C)	FC-F1608BAK5	R 1968 (C)	RS1/10SR222J
D 1964 LED(C)	FC-F1608BAK5	R 1970 (C)	RS1/10SR362J
D 1965 LED(C)	FC-F1608BAK5	R 1974	RS1/4SA681J
D 1966 LED(C)	FC-F1608BAK5	R 1977	RS1/8SQ471J
D 1967 LED(C)	FC-F1608BAK5	R 1979	RS1/8SQ821J
D 1969 LED	FC-1608SXX630D08	R 1982	RS1/10SR821J
D 1970 LED	FC-1608SXX630D08	R 1984	RS1/10SR821J
D 1971 LED	FC-1608SXX630D08	R 1986	RS1/10SR821J
D 1972 LED	FC-1608SXX630D08	R 1988	RS1/10SR821J
D 1973 LED	FC-1608SXX630D08	R 1990	RS1/10SR182J
D 1974 LED	FC-1608SXX630D08	R 1992 (C)	RS1/10SR102J
D 1975 LED	FC-1608SXX630D08	R 1993 (C)	RS1/10SR103J
D 1976 LED	FC-1608SXX630D08	R 1994 (C)	RS1/10SR102J
D 1977 LED	FC-1608SXX630D08	R 1995 (C)	RS1/10SR103J
D 1978 LED	FC-1608SXX630D08	R 1996 (A,B)	RS1/10SR0R0J
D 1979 LED	FC-1608SXX630D08	R 1998 (C)	RS1/10SR331J
D 1980 LED	FC-1608SXX630D08	R 1999	RS1/8SQ471J
D 1981 LED	FC-1608SXX630D08	R 2001 (C)	RS1/10SR0R0J
D 1982 LED	FC-1608SXX630D08		
D 1983 LED	FC-1608SXX630D08		
D 1984 LED	FC-1608SXX630D08		
X 1801 Ceramic Resonator 5.00 MHz	CSS1547		
S 1839 Encoder(MULTI-CONTROL)	CSD1193		

CAPACITORS

C 1801	CKSBYB105K10
C 1806	CKSBYB104K16
C 1851 10 uF	CCG1192
C 1902	CKSBYB103K50
C 1921	CKSBYB104K16

C

Unit Number: CWX4269

Unit Name : CD Core Unit(S11.6VA)

MISCELLANEOUS

IC 201 IC	PEQ094A
IC 301 Driver IC	BD8223EFV
Q 101 Transistor	2SAR502UB
Q 102 Chip Digital Transistor	LTA123JUB
X 201 Ceramic Resonator 16.934 MHz	CSS1603

Circuit Symbol and No.Part No.Circuit Symbol and No.Part No.

S 901 Lever Switch(HOME)
S 903 Spring Switch(DSCSNS)
CN101 Connector
CN701 Connector

CSN1090
CSN1081
CKS4808
CKS6146

C 220
C 221
C 222
C 223

CKSSYB104K10
CKSSYB104K10
CKSSYB104K10
CCSSCH680J50

C 224
C 225
C 228
C 229
C 233

CCSSCH470J50
CKSSYB103K16
CCSSCH180J50
CKSSYB104K10
CKSSYB103K16

RESISTORS

R 101 RS1/10SR2R4J
R 102 RS1/10SR2R4J
R 103 RS1/10SR2R7J
R 108 RS1/16SS105J
R 109 RS1/16SS152J

C 236
C 238
C 299
C 302
C 303

CKSSYB104K10
CKSRYB104K16
CKSSYB104K10
CKSSYB102K50
CKSSYB102K50

R 214 RS1/16SS103J
R 215 RS1/16SS393J
R 216 RS1/16SS102J
R 217 RS1/16SS562J
R 218 RS1/16SS472J

C 304
C 305
C 306
C 307
C 308

CKSSYB223K16
CKSSYB104K10
CKSSYB104K10
CKSRYB105K10
CKSRYB105K10

R 229 RS1/16SS471J
R 232 RS1/16SS0R0J
R 237 RS1/16SS221J
R 240 RS1/16SS473J
R 245 RS1/16SS104J

C 710

CKSSYB102K50

R 254 RS1/16SS104J
R 260 RS1/16SS103J
R 264 RS1/16SS102J
R 281 RS1/16SS560J
R 282 RS1/16SS560J

D

Unit Number: CWX4023

Unit Name : CD Core Unit(S11.6STD)

R 291 RS1/16SS560J
R 294 RS1/16SS471J
R 303 RS1/16SS123J
R 304 RS1/16SS123J
R 305 RS1/16SS102J

MISCELLANEOUS

IC 201 IC PE5791A
IC 301 Driver IC BD8223EFV
Q 101 Transistor 2SAR502UB
Q 102 Chip Digital Transistor LTA123JUB
X 201 Ceramic Resonator 16.934 MHz CSS1603

R 306 RS1/16SS472J
R 307 RS1/16SS102J
R 308 RS1/16SS472J
R 309 RS1/16SS473J
R 310 RS1/16SS472J

S 901 Lever Switch(HOME) CSN1090
S 903 Spring Switch(DSCSNS) CSN1081
CN101 Connector CKS4808
CN701 Connector CKS6146

R 311 RS1/16SS472J
R 312 RS1/16SS472J
R 313 RS1/16SS472J
R 701 RS1/16SS101J
R 702 RS1/16SS101J

RESISTORS

R 101 RS1/10SR2R4J
R 102 RS1/10SR2R4J
R 103 RS1/10SR2R7J
R 108 RS1/16SS105J
R 109 RS1/16SS222J

R 706 RS1/16SS221J

R 214 RS1/16SS103J
R 215 RS1/16SS393J
R 216 RS1/16SS122J
R 217 RS1/16SS562J
R 218 RS1/16SS472J

CAPACITORS

C 104 CKSQYB475K6R3
C 110 CKSSYB104K10
C 111 CKSSYB103K16
C 203 CKSSYB104K10
C 205 CKSRYB105K10

R 229 RS1/16SS471J
R 232 RS1/16SS0R0J
R 237 RS1/16SS221J
R 240 RS1/16SS473J
R 245 RS1/16SS104J

C 209 CKSRYB104K16
C 210 CKSSYB104K10
C 211 CKSSYB104K10
C 212 CKSSYB104K10
C 213 CKSSYB332K50

R 254 RS1/16SS104J
R 260 RS1/16SS103J
R 264 RS1/16SS102J
R 281 RS1/16SS560J
R 282 RS1/16SS560J

C 214 CKSSYB473K16
C 215 CKSSYB104K10
C 216 CKSSYB152K50
C 217 CCSSCH390J50
C 218 CCSSCH5R0C50

R 291 RS1/16SS560J
R 294 RS1/16SS471J
R 303 RS1/16SS123J

C 219 CKSSYB104K10

Circuit Symbol and No.**Part No.**

R 304	RS1/16SS123J
R 305	RS1/16SS102J
R 306	RS1/16SS472J
R 307	RS1/16SS102J
R 308	RS1/16SS472J
R 309	RS1/16SS473J
R 310	RS1/16SS472J
R 311	RS1/16SS472J
R 312	RS1/16SS472J
R 313	RS1/16SS472J
R 701	RS1/16SS101J
R 702	RS1/16SS101J
R 706	RS1/16SS221J

CAPACITORS

C 104	CKSQYB475K6R3
C 203	CKSSYB104K10
C 209	CKSRYB104K16
C 210	CKSSYB104K10
C 211	CKSSYB104K10
C 212	CKSSYB104K10
C 213	CKSSYB332K50
C 214	CKSSYB473K16
C 215	CKSSYB104K10
C 216	CKSSYB182K50
C 217	CCSSCH560J50
C 218	CCSSCH4R0C50
C 219	CKSSYB104K10
C 220	CKSSYB104K10
C 221	CKSSYB104K10
C 222	CKSSYB104K10
C 223	CCSSCH680J50
C 224	CCSSCH470J50
C 225	CKSSYB103K16
C 228	CCSSCH270J50
C 229	CKSSYB104K10
C 233	CKSSYB103K16
C 236	CKSSYB104K10
C 238	CKSRYB104K16
C 299	CKSSYB104K10
C 302	CKSSYB102K50
C 303	CKSSYB102K50
C 304	CKSSYB223K16
C 305	CKSSYB104K10
C 306	CKSSYB104K10
C 307	CKSRYB105K10
C 308	CKSRYB105K10
C 710	CKSSYB102K50

A

B

C

D

E

F