

NO.	PART NO.	DESCRIPTION	Q'TY	NO.	PART NO.	DESCRIPTION	Q'TY
1	074-0898-06	OUTLET SOCKET(6P)	1	25	880-1921O	AM/FM TUNER	1
2	074-0898-20	OUTLET SOCKET(20P)	1	26	335-6788-00	MOLDED PART	1
3	074-1013-30	OUTLET SOCKET(A-12)	1	27	347-6623-00	SPACER	1
4	074-1087-12	OUTLET SOCKET(A-16)	1	28	714-2004-8H	MACHINE SCREW(M2 x 4)	1
5	074-1141-00	OUTLET SOCKET(NS10/06)	1	29	714-2603-8H	MACHINE SCREW(M2.6 x 3)	2
6	074-1192-20	OUTLET SOCKET(20P)	1	30	714-2605-8B	MACHINE SCREW(M2.6 x 5)	18
7	076-0368-06	PLUG(6P)	1	31	714-2610-89	MACHINE SCREW(M2.6 x 10)	2
8	076-0368-20	PLUG(20P)	1	32	816-4007-00	FLAT WIRE	1
9	076-0648-18	PLUG	1	33	929-0730-83	CD CHANGER MODULE	1
10	309-0806-01	FRONT PLATE	1	34	380-5567-82	KNOB	1
11	331-3478-80	OUTLET HOLDER	1	35	716-0778-50	WAVE SCREW(2 x 6)	10
12	331-3479-01	OUTLET HOLDER	1	36	940-8106-83	ESCUTCHEON-ASSY	1
13	331-3885-30	REAR PLATE with ANT.recept	1	37	001-7093-90	LED(RAY1112H-75M)(YEL)	3
14	331-3886-00	MECH-BRKT	1	38	001-7063-96	LED(RAY1102W)(YEL)	23
15	-----	SWITCH PWB	1	39	001-7080-91	LED(SML-512WWT864)(YEL)	14
16	-----	MAIN PWB	1	40	013-6311-50	SWITCH(CD6)	19
17	285-1967-00	GUIDE LABEL	1	41	013-7415-50	DETECTOR SWITCH (CD-SHUTTER)	1
18	285-1968-00	GUIDE LABEL	1	42	016-0013-04	VR W/SHAFT(MAIN-VOL)	1
19	286-6666-09	SETPLATE	1	43	074-1279-68	OUTLET SOCKET(18P)	1
20	311-1897-00	LOWER CASE	1	44	331-4088-00	LCD COVER	1
21	313-1913-00	HEAT SINK	1	45	335-6804-81	LCD-HOLDER	1
22	331-3258-02	SIDE CASE(L)	1	46	335-7730-01	LCD LEFLECTOR	1
23	331-3259-02	SIDE CASE(R)	1	47	379-1341-31	LCD	1
24	331-4095-01	ES-PLATE	1				

ELECTRICAL PARTS LIST

Switch PWB(B1) section

REF No.	PART No.	DESCRIPTION	REF No.	PART No.	DESCRIPTION	REF No.	PART No.	DESCRIPTION
C1101	166-8211-50	820pF	D1127	001-7063-96	RAY1102W	R1119	119-2221-15	1/10W 2.2k ohm
C1102	168-4732-78	0.047uF K	D1128	001-7063-96	RAY1102W	R1120	119-2221-15	1/10W 2.2k ohm
C1103	168-4732-78	0.047uF K	D1129	001-7063-96	RAY1102W	R1121	119-2221-15	1/10W 2.2k ohm
C1104	168-1042-78	16V 0.1uF	D1130	001-7063-96	RAY1102W	R1127	119-0000-05	1/10W 0 ohm JW
C1105	042-0416-59	10V 33uF M TAN	D1131	001-7063-96	RAY1102W	R1128	119-0000-05	1/10W 0 ohm JW
CCT1101	050-0145-52	1/16W 1k ohm x4	D1132	001-7063-96	RAY1102W	R1129	119-1021-15	1/10W 1k ohm
CCT1102	050-0145-52	1/16W 1k ohm x4	D1133	001-7063-96	RAY1102W	R1145	117-0000-05	1/8W 0 ohm JW
D1100	001-7080-91	SML-512WWT864	D1134	001-7063-96	RAY1102W	R1146	117-0000-05	1/8W 0 ohm JW
D1101	001-7080-91	SML-512WWT864	D1135	001-7063-96	RAY1102W	R1147	117-0000-05	1/8W 0 ohm JW
D1102	001-7080-91	SML-512WWT864	D1136	001-7063-96	RAY1102W	R1148	117-0000-05	1/8W 0 ohm JW
D1103	001-7080-91	SML-512WWT864	D1137	001-7063-96	RAY1102W	R1149	117-0000-05	1/8W 0 ohm JW
D1104	001-7080-91	SML-512WWT864	D1138	001-7063-96	RAY1102W	S1101	013-6311-50	SWITCH 100gf
D1105	001-7080-91	SML-512WWT864	D1139	001-7063-96	RAY1102W	S1103	013-6311-50	SWITCH 100gf
D1106	001-7080-91	SML-512WWT864	IC1101	051-6064-00	LC75883W	S1104	013-6311-50	SWITCH 100gf
D1107	001-7080-91	SML-512WWT864	J1101	074-1279-68	18P	S1105	013-6311-50	SWITCH 100gf
D1108	001-7080-91	SML-512WWT864	LCD1101	379-1341-31	LCD	S1106	013-6311-50	SWITCH 100gf
D1109	001-7080-91	SML-512WWT864	R1101	119-6831-15	1/10W 68k ohm	S1107	013-6311-50	SWITCH 100gf
D1110	001-7080-91	SML-512WWT864	R1102	116-2711-15	1/4W 270 ohm	S1108	013-6311-50	SWITCH 100gf
D1111	001-7080-91	SML-512WWT864	R1103	116-2711-15	1/4W 270 ohm	S1109	013-6311-50	SWITCH 100gf
D1112	001-7080-91	SML-512WWT864	R1104	116-2711-15	1/4W 270 ohm	S1110	013-6311-50	SWITCH 100gf
D1113	001-7080-91	SML-512WWT864	R1105	116-2711-15	1/4W 270 ohm	S1111	013-6311-50	SWITCH 100gf
D1114	001-7093-90	RAY1112H-75M	R1106	116-2711-15	1/4W 270 ohm	S1112	013-6311-50	SWITCH 100gf
D1115	001-7093-90	RAY1112H-75M	R1107	116-2711-15	1/4W 270 ohm	S1113	013-6311-50	SWITCH 100gf
D1116	001-7093-90	RAY1112H-75M	R1108	116-2711-15	1/4W 270 ohm	S1114	013-6311-50	SWITCH 100gf
D1117	001-7063-96	RAY1102W	R1109	116-4711-15	1/4W 470 ohm	S1115	013-6311-50	SWITCH 100gf
D1118	001-7063-96	RAY1102W	R1110	116-3911-15	1/4W 390 ohm	S1116	013-6311-50	SWITCH 100gf
D1119	001-7063-96	RAY1102W	R1111	116-5611-15	1/4W 560 ohm	S1117	013-6311-50	SWITCH 100gf
D1120	001-7063-96	RAY1102W	R1112	116-3911-15	1/4W 390 ohm	S1118	013-6311-50	SWITCH 100gf
D1121	001-7063-96	RAY1102W	R1113	116-4711-15	1/4W 470 ohm	S1119	013-6311-50	SWITCH 100gf
D1122	001-7063-96	RAY1102W	R1114	116-4711-15	1/4W 470 ohm	S1121	013-6311-50	SWITCH 100gf
D1123	001-7063-96	RAY1102W	R1115	116-3911-15	1/4W 390 ohm	S1122	013-7415-50	SPVG11040
D1124	001-7063-96	RAY1102W	R1116	116-3911-15	1/4W 390 ohm	VR1101	016-0013-04	VR W/SHAFT
D1125	001-7063-96	RAY1102W	R1117	116-5611-15	1/4W 560 ohm	PWB	039-2754-01	PWB(WITHOUT COMPONENT)
D1126	001-7063-96	RAY1102W	R1118	116-8211-15	1/4W 820 ohm			

Main PWB(B2) section

REF No.	PART No.	DESCRIPTION	REF No.	PART No.	DESCRIPTION	REF No.	PART No.	DESCRIPTION
ANT102	331-3885-30	REAR PLATE with ANT.recept	C329	117-0000-05	1/8W 0 ohm JW	C901	117-0000-05	1/8W 0 ohm JW
BL101	880-19210	AM/FM TUNER	C330	117-0000-05	1/8W 0 ohm JW	C902	117-0000-05	1/8W 0 ohm JW
C101	166-1511-50	150pF CH	C331	117-0000-05	1/8W 0 ohm JW	C903	117-0000-05	1/8W 0 ohm JW
C119	166-1201-50	12pF CH	C513	119-0000-05	1/10W 0 ohm JW	C904	117-0000-05	1/8W 0 ohm JW
C120	168-4712-55	470pF K	C514	168-1042-78	16V 0.1uF	C905	163-4753-65	50V 4.7uF
C121	166-1007-50	10pF CH	C515	168-6822-55	6800pF K	CCT201	050-0145-52	1/16W 1k ohm x4
C122	166-1011-50	100pF CH	C516	166-1011-50	100pF CH	CCT202	050-0145-52	1/16W 1k ohm x4
C123	188-1073-28	10V 100uF	C517	166-1011-50	100pF CH	D207	001-0516-90	MA111
C124	043-0277-51	0.022uF	C518	166-1011-50	100pF CH	D208	001-0516-90	MA111
C125	168-1042-78	16V 0.1uF	C519	166-1011-50	100pF CH	D209	001-0516-90	MA111
C126	188-1073-28	10V 100uF	C603	119-0000-05	1/10W 0 ohm JW	D501	001-0516-90	MA111
C127	168-1042-78	16V 0.1uF	C604	119-0000-05	1/10W 0 ohm JW	D606	001-0504-49	HZS9 C3L
C128	168-1042-78	16V 0.1uF	C605	119-0000-05	1/10W 0 ohm JW	D607	001-0504-49	HZS9 C3L
C129	188-1073-28	10V 100uF	C606	119-0000-05	1/10W 0 ohm JW	D608	001-0529-34	MA8062-L
C130	178-1052-78	1uF	C620	178-4742-78	0.47uF	D610	001-0466-90	S5688B
C131	168-1232-55	0.012uF K	C621	178-4742-78	0.47uF	D611	001-0516-90	MA111
C133	043-0277-51	0.022uF	C622	178-4742-78	0.47uF	D612	001-0466-90	S5688B
C134	188-4763-38	16V 47uF	C623	178-4742-78	0.47uF	D613	001-2015-00	RL253
C135	042-1458-90	50V 1uF LN	C626	042-0592-61	16V 47uF	D614	001-0466-90	S5688B
C138	168-1022-55	1000pF K	C627	168-1042-78	16V 0.1uF	D615	001-0466-90	S5688B
C140	168-2232-55	0.022uF K	C628	168-1042-78	16V 0.1uF	D671	001-0529-32	MA8056-M
C141	188-4763-38	16V 47uF	C629	163-1073-35	16V 100uF	D672	001-0529-48	MA8091-H
C142	168-3932-78	0.039uF K	C630	168-1032-55	0.01uF K	D704	001-0516-90	MA111
C143	166-1011-50	100pF CH	C631	042-0592-58	16V 10uF	D705	001-0516-90	MA111
C144	166-1011-50	100pF CH	C632	163-1073-35	16V 100uF	D707	001-4305-39	UDZSTE-17 36B
C145	166-1011-50	100pF CH	C633	163-2273-25	10V 220uF	D750	001-0466-90	S5688B
C146	166-1011-50	100pF CH	C634	168-2232-55	0.022uF K	IC103	051-6212-08	LC72191JM-TLM
C147	168-3932-78	0.039uF K	C635	166-2201-50	22pF CH	IC161	051-4607-90	SAA6581T
C148	166-1801-50	18pF CH	C636	163-2263-35	16V 22uF	IC202	052-3193-10	M30624MGA-652GP
C149	178-3332-78	0.033uF	C637	168-2232-55	0.022uF K	IC203	051-5436-38	BD5233G-TR
C150	178-3332-78	0.033uF	C638	163-2253-65	50V 2.2uF	IC301	051-5041-90	BD3827K
C152	168-4722-55	4700pF K	C639	166-4701-50	47pF CH	IC502	051-3020-90	NJM4565V
C154	166-1011-50	100pF CH	C640	168-6822-55	6800pF K	IC603	051-2055-00	TDA8593J/N3
C155	166-1011-50	100pF CH	C641	163-1073-35	16V 100uF	IC604	051-3020-90	NJM4565V
C156	166-1011-50	100pF CH	C642	168-1042-78	16V 0.1uF	IC605	051-5441-08	BD4828G-TR
C157	166-1011-50	100pF CH	C643	163-1073-35	16V 100uF	IC606	051-3341-90	BD3931FP
C160	166-1011-50	100pF CH	C644	172-1041-15	0.1uF	J205	074-1192-20	20P
C161	178-2242-78	0.22uF	C645	042-1545-00	16V 2200uF	J602	074-1141-00	OUTLET SOCKET
C162	188-4763-18	6.3V 47uF	C646	168-2222-55	2200pF K	J702	074-1013-30	OUTLET SOCKET
C163	168-5612-55	560pF Z	C651	042-0416-57	10V 47uF M TAN	J703	074-1087-12	OUTLET SOCKET
C164	166-4701-50	47pF CH	C655	168-1042-78	16V 0.1uF	L104	010-2003-04	30uH
C165	188-2253-68	50V 2.2uF	C657	168-2222-55	2200pF K	L105	010-3407-66	NLV32 22uH J
C166	166-5601-50	56pF CH	C658	168-1042-78	16V 0.1uF	L161	010-3407-66	NLV32 22uH J
C167	168-3312-55	330pF K	C659	163-1073-35	16V 100uF	L202	010-3407-66	NLV32 22uH J
C168	168-1032-55	0.01uF K	C660	188-1053-68	50V 1uF	P101	076-0368-06	PLUG 6P
C169	168-1022-55	1000pF K	C671	168-1032-55	0.01uF K	P102	076-0368-20	20P
C190	168-4712-55	470pF K	C672	178-2242-38	0.22uF B	P202	076-0648-18	18P
C191	166-1801-50	18pF CH	C673	178-2242-38	0.22uF B	P701	074-0898-06	6P OUTLET SOCKET
C192	166-1501-50	15pF CH	C681	168-2232-55	0.022uF K	P702	074-0898-20	20P
C201	168-2232-55	0.022uF K	C682	168-2232-55	0.022uF K	Q106	125-2026-91	UN5211
C210	163-4763-15	6.3V 47uF	C683	168-2232-55	0.022uF K	Q107	192-4116-51	2SC4116 G,L
C211	168-1042-78	16V 0.1uF	C684	168-2232-55	0.022uF K	Q109	192-4116-51	2SC4116 G,L
C213	168-1022-55	1000pF K	C685	168-2232-55	0.022uF K	Q110	190-1162-00	2SA1162
C214	168-1032-55	0.01uF K	C686	168-2232-55	0.022uF K	Q111	190-1162-00	2SA1162
C215	168-1042-78	16V 0.1uF	C687	168-2232-55	0.022uF K	Q161	192-4116-00	2SC4116
C220	168-1042-78	16V 0.1uF	C688	168-2232-55	0.022uF K	Q201	125-2026-92	UN5212
C223	163-1053-65	50V 1uF	C692	168-1042-78	16V 0.1uF	Q207	125-2026-91	UN5211
C224	163-4753-55	35V 4.7uF	C693	189-1073-29	10V 100uF	Q208	125-2026-91	UN5211
C225	166-1011-50	100pF CH	C694	189-1073-29	10V 100uF	Q210	125-0020-96	UN5110-Q,R,S
C226	166-1011-50	100pF CH	C696	188-1053-68	50V 1uF	Q211	125-2026-91	UN5211
C227	166-1011-50	100pF CH	C697	168-1042-38	50V 0.1uF	Q212	125-2026-91	UN5211
C301	163-1063-35	16V 10uF	C701	042-1562-17	16V 10uF	Q504	125-2026-91	UN5211
C302	178-4742-78	0.47uF	C702	042-1562-17	16V 10uF	Q505	125-2026-91	UN5211
C303	178-4742-78	0.47uF	C703	042-0592-58	16V 10uF	Q506	191-0709-00	2SB709A Q,R,S
C312	178-4742-78	0.47uF	C704	042-0592-58	16V 10uF	Q608	193-1259-50	2SD1259DS R,Q
C314	168-1042-78	16V 0.1uF	C708	168-1022-55	1000pF K	Q609	125-9017-92	UMD3N-TR
C317	163-1063-35	16V 10uF	C709	168-1022-55	1000pF K	Q610	193-2118-00	2SD2118F5 Q,R,S
C320	042-0592-58	16V 10uF	C713	168-1022-55	1000pF K	Q611	192-4116-00	2SC4116
C321	042-0592-58	16V 10uF	C714	168-2232-55	0.022uF K	Q612	125-9017-92	UMD3N-TR
C322	042-0592-58	16V 10uF	C715	187-1063-37	16V 10uF	Q615	190-1298-00	2SA1298
C323	042-0592-58	16V 10uF	C716	187-1063-37	16V 10uF	Q616	125-2026-91	UN5211
C328	117-0000-05	1/8W 0 ohm JW	C717	188-1066-38	16V 10uF NP	Q617	125-2026-95	UN521N
			C718	188-1066-38	16V 10uF NP			

REF No.	PART No.	DESCRIPTION
Q618	131-1188-00	2SB1188
Q619	125-9017-92	UMD3N-TR
Q650	190-1298-00	2SA1298
Q651	125-2026-91	UN5211
Q652	193-1664-00	2SD1664 P,Q,R
Q653	125-9017-92	UMD3N-TR
Q671	193-2118-00	2SD2118F5 Q,R,S
Q672	125-9017-92	UMD3N-TR
Q705	125-2026-91	UN5211
Q706	125-0020-91	UN5111
Q709	192-4116-00	2SC4116
Q710	192-4116-00	2SC4116
Q714	192-4116-00	2SC4116
Q750	125-2026-91	UN5211
Q901	125-4001-90	XN1504
Q902	125-4001-90	XN1504
Q903	125-0020-96	UN5110-Q,R,S
Q904	125-9017-92	UMD3N-TR
R122	119-2221-15	1/10W 2.2k ohm
R123	119-0000-05	1/10W 0 ohm JW
R124	119-4721-15	1/10W 4.7k ohm
R125	119-1021-15	1/10W 1k ohm
R126	119-2221-15	1/10W 2.2k ohm
R127	119-4721-15	1/10W 4.7k ohm
R128	119-3321-15	1/10W 3.3k ohm
R129	119-1001-15	1/10W 10 ohm
R130	119-1501-15	1/10W 15 ohm
R131	119-2221-15	1/10W 2.2k ohm
R132	119-2221-15	1/10W 2.2k ohm
R134	119-1031-15	1/10W 10k ohm
R135	119-1021-15	1/10W 1k ohm
R136	119-1021-15	1/10W 1k ohm
R137	119-1031-15	1/10W 10k ohm
R138	119-4721-15	1/10W 4.7k ohm
R139	119-4721-15	1/10W 4.7k ohm
R140	119-2221-15	1/10W 2.2k ohm
R141	119-1021-15	1/10W 1k ohm
R142	119-2701-15	1/10W 27 ohm
R143	119-4731-15	1/10W 47k ohm
R144	119-0000-05	1/10W 0 ohm JW
R145	119-4741-15	1/10W 470k ohm
R161	119-1021-15	1/10W 1k ohm
R162	119-1021-15	1/10W 1k ohm
R163	119-1031-15	1/10W 10k ohm
R164	119-1031-15	1/10W 10k ohm
R206	119-4721-15	1/10W 4.7k ohm
R207	119-4721-15	1/10W 4.7k ohm
R209	119-4731-15	1/10W 47k ohm
R210	119-4731-15	1/10W 47k ohm
R211	119-4731-15	1/10W 47k ohm
R212	119-4731-15	1/10W 47k ohm
R213	119-1011-15	1/10W 100 ohm
R214	119-1011-15	1/10W 100 ohm
R217	119-4721-15	1/10W 4.7k ohm
R219	119-4731-15	1/10W 47k ohm
R220	119-4731-15	1/10W 47k ohm
R221	119-3311-15	1/10W 330 ohm
R224	119-1031-15	1/10W 10k ohm
R226	119-1031-15	1/10W 10k ohm
R227	119-3311-15	1/10W 330 ohm
R228	119-4731-15	1/10W 47k ohm
R229	119-4731-15	1/10W 47k ohm
R231	119-2231-15	1/10W 22k ohm
R236	119-2231-15	1/10W 22k ohm
R238	119-4731-15	1/10W 47k ohm
R239	119-4731-15	1/10W 47k ohm
R241	119-4731-15	1/10W 47k ohm
R242	119-4731-15	1/10W 47k ohm
R243	119-4731-15	1/10W 47k ohm

REF No.	PART No.	DESCRIPTION
R244	119-4731-15	1/10W 47k ohm
R246	119-1031-15	1/10W 10k ohm
R247	119-4731-15	1/10W 47k ohm
R249	119-1041-15	1/10W 100k ohm
R253	119-4731-15	1/10W 47k ohm
R255	119-3331-15	1/10W 33k ohm
R256	119-6821-15	1/10W 6.8k ohm
R257	119-1031-15	1/10W 10k ohm
R260	119-4731-15	1/10W 47k ohm
R261	119-1021-15	1/10W 1k ohm
R263	119-1021-15	1/10W 1k ohm
R264	119-1021-15	1/10W 1k ohm
R265	119-1021-15	1/10W 1k ohm
R266	119-1021-15	1/10W 1k ohm
R267	119-1021-15	1/10W 1k ohm
R268	119-1021-15	1/10W 1k ohm
R269	119-4731-15	1/10W 47k ohm
R270	119-1031-15	1/10W 10k ohm
R271	119-2741-15	1/10W 270k ohm
R272	119-1531-15	1/10W 15k ohm
R273	119-3321-15	1/10W 3.3k ohm
R274	119-3321-15	1/10W 3.3k ohm
R275	119-4731-15	1/10W 47k ohm
R276	119-3331-15	1/10W 33k ohm
R277	119-4731-15	1/10W 47k ohm
R278	119-4731-15	1/10W 47k ohm
R279	119-4731-15	1/10W 47k ohm
R280	119-4731-15	1/10W 47k ohm
R281	119-4731-15	1/10W 47k ohm
R283	119-4731-15	1/10W 47k ohm
R284	119-1021-15	1/10W 1k ohm
R285	119-1021-15	1/10W 1k ohm
R286	119-1021-15	1/10W 1k ohm
R287	119-1021-15	1/10W 1k ohm
R289	119-1021-15	1/10W 1k ohm
R290	119-1041-15	1/10W 100k ohm
R301	032-0106-70	1/10W 33k ohm D
R302	032-0106-70	1/10W 33k ohm D
R303	032-0106-70	1/10W 33k ohm D
R304	032-0106-70	1/10W 33k ohm D
R311	119-3331-15	1/10W 33k ohm
R516	119-4731-15	1/10W 47k ohm
R517	119-0000-05	1/10W 0 ohm JW
R518	119-1531-15	1/10W 15k ohm
R519	119-1021-15	1/10W 1k ohm
R520	119-2231-15	1/10W 22k ohm
R521	032-0140-04	1/10W 8.2k ohm F
R522	032-0140-50	1/10W 10k ohm JW
R523	032-0140-04	1/10W 8.2k ohm F
R524	032-0140-50	1/10W 10k ohm F
R525	032-0140-50	1/10W 10k ohm F
R526	032-0140-50	1/10W 10k ohm F
R527	032-0140-03	1/10W 220k ohm F
R528	032-0140-03	1/10W 220k ohm F
R605	119-0000-05	1/10W 0 ohm JW
R606	119-0000-05	1/10W 0 ohm JW
R622	119-0000-05	1/10W 0 ohm JW
R623	119-0000-05	1/10W 0 ohm JW
R633	119-4731-15	1/10W 47k ohm
R634	119-4731-15	1/10W 47k ohm
R635	119-2731-15	1/10W 27k ohm
R636	119-1041-15	1/10W 100k ohm
R637	116-2211-15	1/4W 220 ohm
R638	119-1041-15	1/10W 100k ohm
R639	119-1231-15	1/10W 12k ohm
R640	119-1031-15	1/10W 10k ohm
R641	119-1031-15	1/10W 10k ohm
R642	119-1031-15	1/10W 10k ohm
R643	119-1031-15	1/10W 10k ohm

REF No.	PART No.	DESCRIPTION
R644	032-0140-16	1/10W 180k ohm F
R645	032-0106-65	1/10W 100k ohm D
R646	116-3911-15	1/4W 390 ohm
R647	119-1041-15	1/10W 100k ohm
R648	119-5611-15	1/10W 56k ohm
R649	119-1031-15	1/10W 10k ohm
R653	119-3321-15	1/10W 3.3k ohm
R654	119-1031-15	1/10W 10k ohm
R655	119-1031-15	1/10W 10k ohm
R656	116-1221-15	1/4W 1.2k ohm
R657	116-1091-15	1/4W 1 ohm
R658	116-1531-15	1/4W 15k ohm
R659	116-4791-15	1/4W 4.7 ohm
R660	116-2721-15	1/4W 2.7k ohm
R662	119-2201-15	1/10W 22 ohm
R663	119-0000-05	1/10W 0 ohm JW
R664	119-0000-05	1/10W 0 ohm JW
R665	119-0000-05	1/10W 0 ohm JW
R666	119-0000-05	1/10W 0 ohm JW
R667	116-8211-15	1/4W 820 ohm
R668	116-8211-15	1/4W 820 ohm
R669	116-8211-15	1/4W 820 ohm
R671	117-2211-15	1/8W 220 ohm
R672	119-1041-15	1/10W 100k ohm
R673	119-1041-15	1/10W 100k ohm
R690	119-4721-15	1/10W 4.7k ohm
R691	119-4721-15	1/10W 4.7k ohm
R692	119-4721-15	1/10W 4.7k ohm
R693	119-4721-15	1/10W 4.7k ohm
R694	119-0000-05	1/10W 0 ohm JW
R695	116-4791-15	1/4W 4.7 ohm
R696	119-1031-15	1/10W 10k ohm
R697	119-1031-15	1/10W 10k ohm
R698	116-6811-15	1/4W 680 ohm
R699	119-1041-15	1/10W 100k ohm
R703	119-3011-15	1/10W 300 ohm
R704	119-3011-15	1/10W 300 ohm
R710	119-4731-15	1/10W 47k ohm
R712	119-2231-15	1/10W 22k ohm
R713	119-4731-15	1/10W 47k ohm
R715	119-1031-15	1/10W 10k ohm
R716	119-5631-15	1/10W 56k ohm
R717	119-1031-15	1/10W 10k ohm
R718	119-1031-15	1/10W 10k ohm
R721	119-5631-15	1/10W 56k ohm
R722	119-5631-15	1/10W 56k ohm
R728	119-5621-15	1/10W 5.6k ohm
R730	119-5621-15	1/10W 5.6k ohm
R731	119-3011-15	1/10W 300 ohm
R732	119-3011-15	1/10W 300 ohm
R750	119-2221-15	1/10W 2.2k ohm
R901	119-1031-15	1/10W 10k ohm
R902	119-1031-15	1/10W 10k ohm
R903	119-1031-15	1/10W 10k ohm
R904	119-1031-15	1/10W 10k ohm
R905	119-8221-15	1/10W 8.2k ohm
R906	119-1231-15	1/10W 12k ohm
SUP102	060-0122-91	DSP-141N-S00B
T601	009-0675-01	CHOKE
TC101	004-1580-60	30PF
TH602	002-0229-90	PTH8L05B
VR102	012-5203-56	10k ohm
X101	161-1066-80	7.2MHz
X161	061-3013-90	4.332MHz
X201	060-1505-00	CSTCC10.0MG-TC
PWB	039-2753-00	PWB(WITHOUT COMPONENT)

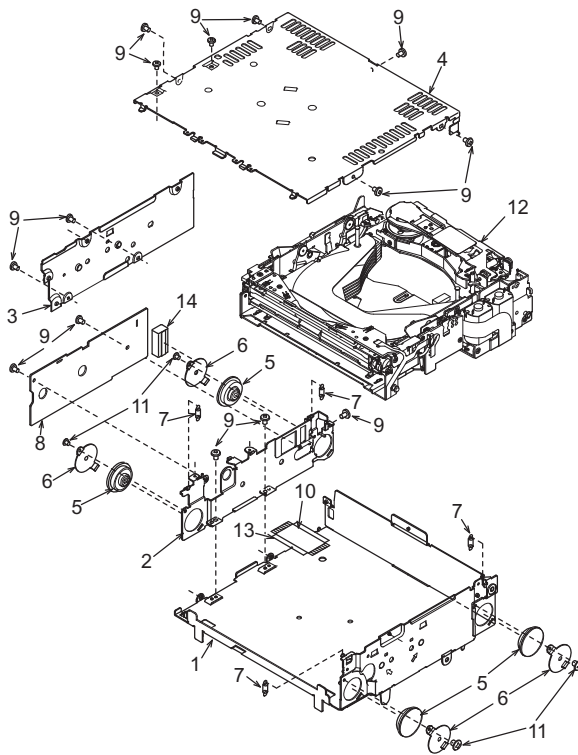
Service Manual

6 Disc CD Changer Module

Model **929-0730-83**

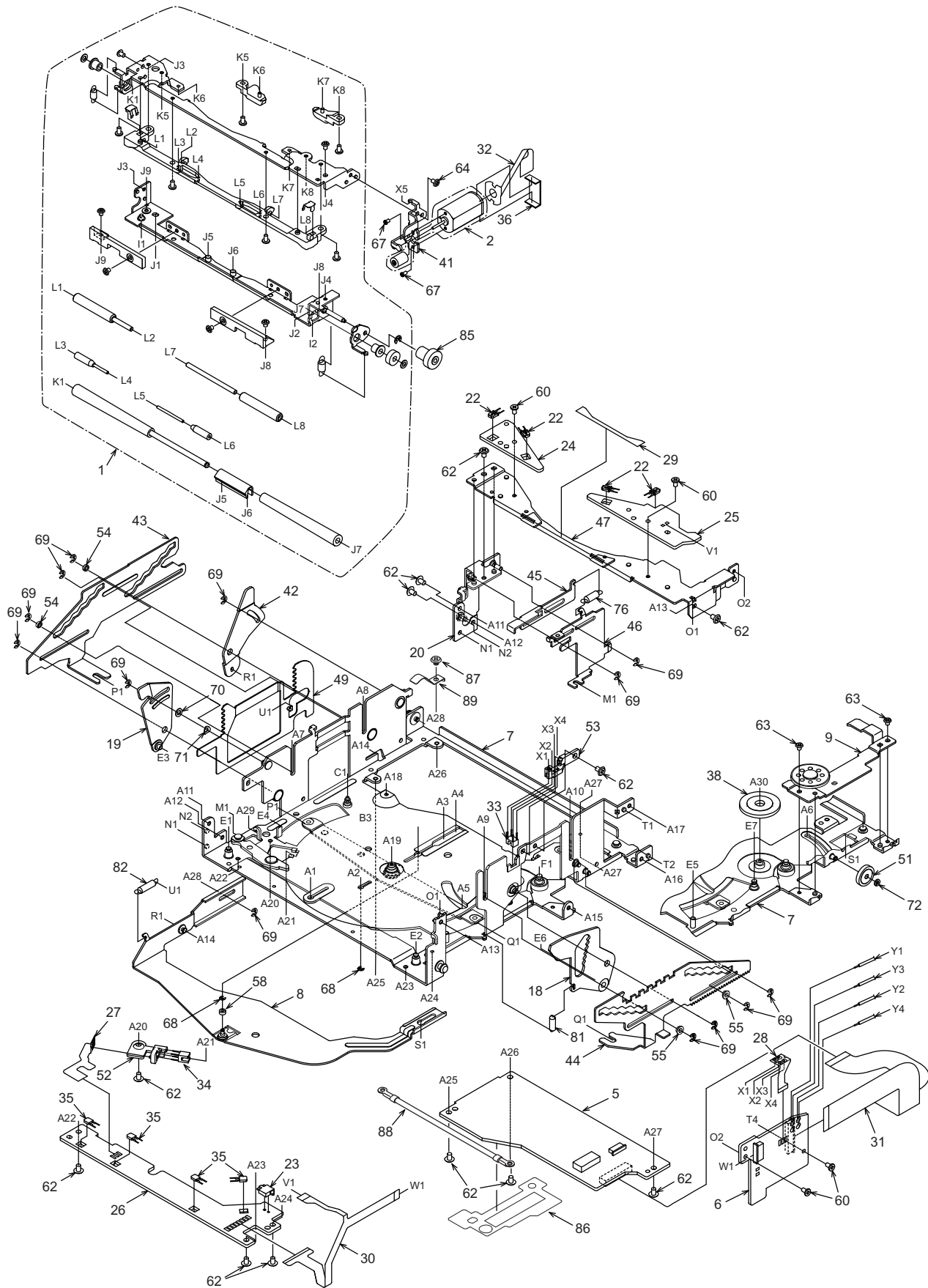
EXPLODED VIEW/PARTS LIST

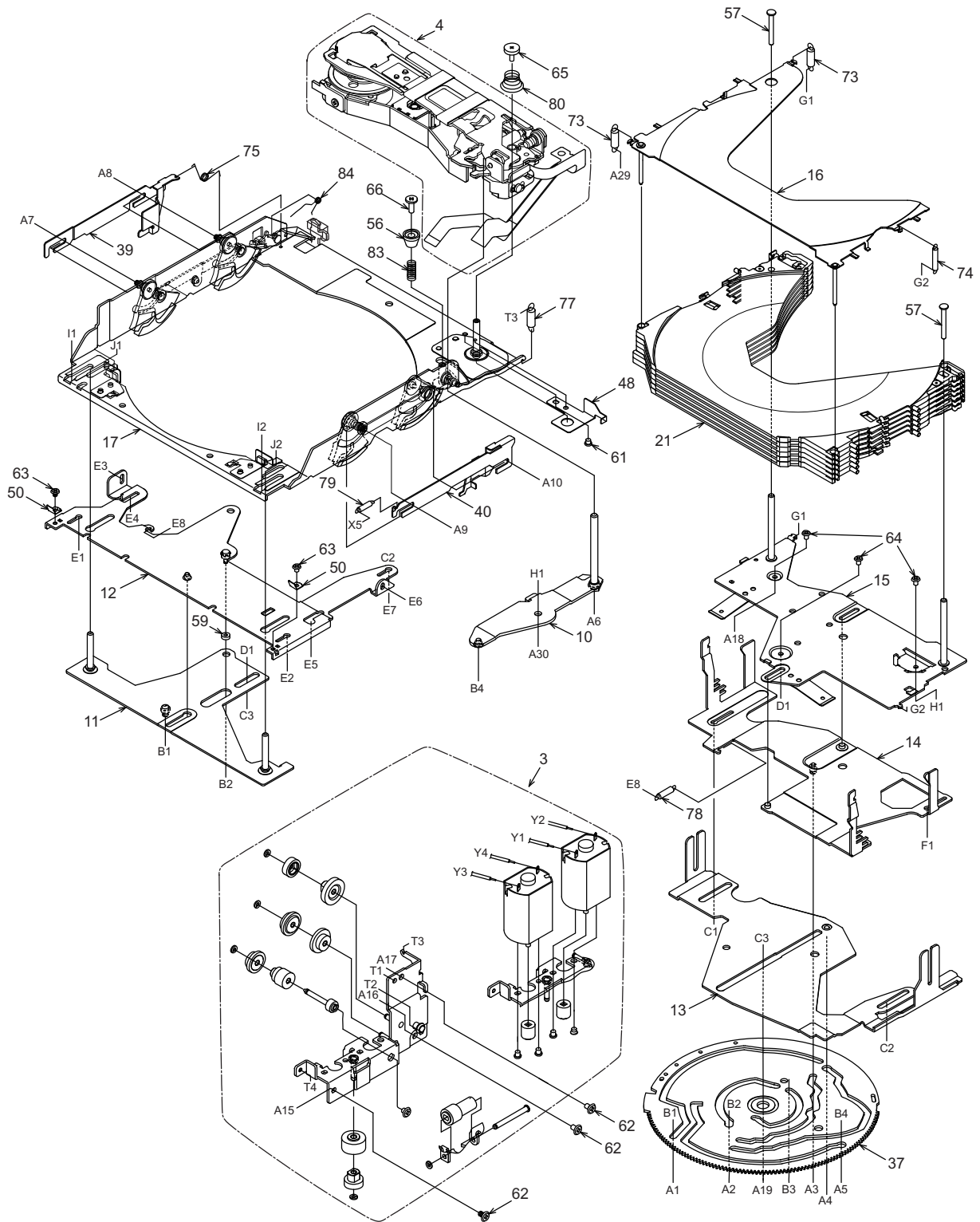
CD changer module section



NO.	PART NO.	DESCRIPTION	QTY
1	311-1837-25	LOWER CASE	1
2	331-3896-22	PWB-HOLDER	1
3	305-0334-21	SIDE CASE	1
4	310-1741-27	UPPER CASE	1
5	629-0083-01	DAMPER	4
6	620-1086-20	DAMPER-H-PLT	4
7	750-3491-00	FL-SPRING	4
8	-----	CD PWB	1
9	716-1716-02	SCREW(M2 x 3)	14
10	HBS-561-100	FPC	1
11	716-3450-00	SCREW(M1.7 x 2)	4
12	-----	CD CHANGER MECHANISM	1
13	347-6619-00	INSULATOR	1
14	345-8748-00	GASKET	1

CD changer mechanism section

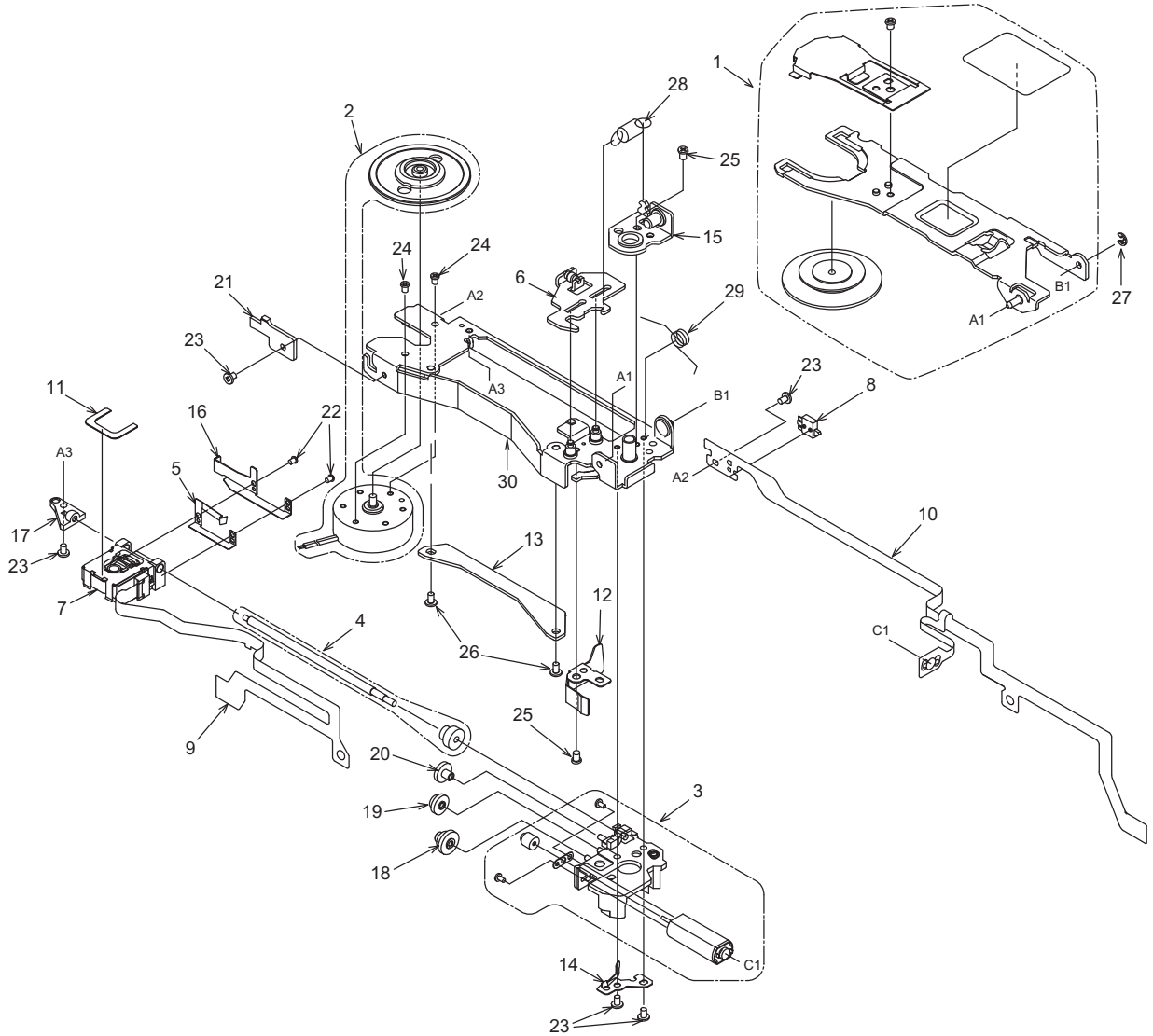




NO.	PART NO.	DESCRIPTION	Q'TY
1	HBS-562-100	LOADING UNIT (WITHOUT MOTOR)	1
2	SMA-186-100	LOADING MOTOR ASSY	1
3	HBS-530-100	MOTOR PLATE SUB ASSY	1
4	HBS-592-100	DRIVE UNIT	1
5	-----	DSP PWB	1
6	-----	DRIVER PWB	1
7	966-1751-22	CHASSIS ASSY	1
8	966-0600-23	LOCK-P-RE-ASSY	1
9	966-0601-21	M-GEAR-P-ASSY	1
10	966-0602-26	DR-LINK-ASSY	1
11	966-0603-21	MODE-P-ASSY	1
12	966-0604-26	LOCK-PF-ASSY	1
13	966-0605-20	SHIFT-P-ASSY	1
14	966-0606-23	HLC-PLATE-ASSY	1
15	966-1788-22	COV-PLATE-ASSY	1
16	HBS-535-100	TOP-PLATE-ASSY	1
17	966-0652-24	DR-BASE-P-ASSY	1
18	966-0615-21	LOCK-L-RF-ASSY	1
19	966-0616-20	LOCK-L-LF-ASSY	1
20	966-0618-21	EJECT-B-ASSY	1
21	966-1742-20	DISC-HOL-ASSY	1
22	001-7042-00	DIODE (GL4800)	4
23	013-7414-50	DETECTOR SWITCH	1
24	-----	LED-L-PWB	1
25	-----	LED-R-PWB	1
26	-----	SENSOR PWB	1
27	039-2009-00	PIM-FPC (WITHOUT COMPONENT)	1
28	039-2010-00	PIV-FPC (WITHOUT COMPONENT)	1
29	039-2011-01	LED-FPC	1
30	039-2012-00	SENSOR-FPC	1
31	039-2013-04	MOS-FPC	1
32	039-2014-01	L-MOTOR-FPC (WITHOUT COMPONENT)	1
33	051-5806-01	IC (GPIS93)	1
34	051-5806-02	IC (GPIS95)	1
35	060-0252-01	PHOTO-TR	4
36	347-6657-01	LO-COVER SHEET	1
37	620-1041-26	GEAR PLATE	1
38	620-1042-20	M-GEAR-H	1
39	620-1056-22	HLR-PLATE-L	1
40	620-1580-20	HLR-PLATE-R	1
41	620-1576-20	LO-MOTOR-PLT	1
42	620-1066-20	LOCK LINK-LR	1
43	620-1067-21	SLIDE PLATE-L	1
44	620-1068-22	SLIDE PLATE-R	1

NO.	PART NO.	DESCRIPTION	Q'TY
45	620-1071-21	EJECT ARM	1
46	620-1072-20	EJECT PLATE	1
47	620-1577-20	FRONT PLATE	1
48	620-1083-20	FPC-PLATE	1
49	620-1090-20	GAP PLATE	1
50	620-1568-21	RATTLE PLATE-F	2
51	621-0640-20	V-GEAR-G	1
52	621-0641-21	PI-HOLDER-M	1
53	621-0656-21	PI-HOLDER-V	1
54	622-1622-20	SL-G-ROLLER	2
55	622-1623-00	SL-G-ROLLER-R	2
56	622-1648-23	DU-STP-SLEEVE	1
57	622-1650-23	COV-PLATE PIN-B	2
58	622-1651-00	LOCK-RE-ROLLER	1
59	622-1652-00	LOCK-PF-ROLLER	1
60	716-1866-50	SCREW(M1.7x3)	4
61	716-1873-00	SCREW(M2x1.6)	1
62	716-3449-50	SCREW(M2x3)	15
63	716-3450-00	SCREW(M1.7x2)	4
64	716-3451-01	SCREW(M1.7x2.5)	4
65	716-3459-01	SCREW(M1.7x5)	1
66	716-3466-53	SCREW(M2x6)	1
67	738-1422-1B	PRECISION SCREW	2
68	743-1200-10	E-RING	2
69	743-1500-10	E-RING	13
70	746-0624-00	WASHER	1
71	746-0712-23	WASHER	1
72	746-0761-00	WASHER	1
73	750-3478-01	TOP-P-SP-L	2
74	750-3479-01	TOP-P-SP-R	1
75	750-3480-01	DR-LOCK-SP	1
76	750-3483-00	EJECT-A-SPRING	1
77	750-3484-01	DR-BASE-SPRING	1
78	750-3485-01	TENSION-SP-L	1
79	750-3486-01	LO-TENSION-SP	1
80	750-3489-01	DRIVE-P-SPRING	1
81	750-3496-00	GAP-P-SPRING R	1
82	750-3497-00	GAP-P-SPRING L	1
83	750-6711-01	DU-STP-SPRING	1
84	750-6712-01	DR-LOCK-SP-B	1
85	621-0651-22	LOAD GEAR-A	1
86	347-7860-20	FPC COVER	1
87	716-1850-01	SCREW	1
88	854-4348-01	EXTENSION LEAD	1
89	620-1604-20	DR-PLATE-SCREW	1

Drive unit section : Drive unit : HBS-592-100



NO.	PART NO.	DESCRIPTION	Q'TY	NO.	PART NO.	DESCRIPTION	Q'TY
1	HBS-532-101	CLAMPER SUB ASSY	1	16	620-1730-01	SCREW-HOL-PLT	1
2	SMA-196-100	SPINDLE MOTOR ASSY	1	17	621-0670-20	LS-HOLDER-L	1
3	SMA-191-100	SLED MOTOR ASSY	1	18	621-0673-20	D-GEAR A	1
4	HBS-515-103	LS-ASSY	1	19	621-0674-20	D-GEAR B	1
5	620-1587-03	SH-SP-PLT	1	20	621-0675-20	D-GEAR C	1
6	HBS-542-101	D-SHIFT-P-ASSY	1	21	621-0683-21	DU-STOPPER	1
7	969-0011-01	PICK UP-ASSY	1	22	716-3511-01	SCREW(M1.4x3)	2
8	013-7414-50	DETECT SWITCH	1	23	716-3470-01	SCREW(M1.7x3)	5
9	039-2015-02	P/U-FPC	1	24	716-3527-00	SCREW	2
10	039-2016-02	M/S-FPC (WITHOUT COMPONENT)	1	25	738-2025-1H	PRECISION SCREW(M2x2.5)	2
11	347-6632-00	PU-SHEET	1	26	716-3474-01	SCREW(M1.7x3)	2
12	620-1078-21	PUSH PLATE	1	27	743-1500-20	E-RING	1
13	620-1080-22	PU-GUIDE PLATE	1	28	750-3487-00	SHIFT-P-SPRING	1
14	620-1081-20	SCREW PUSH-PLT	1	29	750-3504-00	CLAMP-A-SPRING	1
15	966-0650-20	SPRING PLT ASSY	1	30	966-0649-02	DRIVE PLT-ASSY	1

ELECTRICAL PARTS LIST

Note) Several different parts of the same reference number are alternative parts.
One of those parts is used in the set.

CD PWB section(BM1)

REF No.	PART No.	DESCRIPTION	REF No.	PART No.	DESCRIPTION	REF No.	PART No.	DESCRIPTION
C1	168-4735-56	0.047uF Z	IC3	052-5061-02	M30621MCM-FW6GP	R20	119-4731-15	1/10W 47k ohm
C2	168-4735-56	0.047uF Z				R24	119-4731-15	1/10W 47k ohm
C4	168-1222-55	1200pF K	IC4	051-9402-78	BR93L56RFVM-W	R25	119-1031-15	1/10W 10k ohm
C5	163-2263-35	16V22uF	IC5	051-3332-90	NJU722U33	R26	119-4721-15	1/10W 4.7k ohm
C6	168-1222-55	1200pF K	IC6	051-3293-90	BA033SFP-E2	R27	119-1031-15	1/10W 10k ohm
C12	168-1222-55	1200pF K	J1	074-1189-95	45P	R28	119-1041-15	1/10W 100k ohm
C15	168-1222-55	1200pF K	J3	074-1237-70	20P	R29	119-1041-15	1/10W 100k ohm
C16	163-2263-35	16V22uF	P1	076-0478-55	PLUG	R31	119-4731-15	1/10W 47k ohm
C18	168-1045-56	0.1uF Z	Q3	190-1162-00	2SA1162	R32	119-0000-05	1/10W 0 ohm JW
C19	166-1011-50	100pF CH	Q4	198-3018-00	2SK3018	R35	119-0000-05	1/10W 0 ohm JW
C21	168-1032-55	0.01uF K	Q5	131-1188-50	2SB1188PQR	R36	119-4731-15	1/10W 47k ohm
C22	168-1045-56	0.1uF Z	Q6	198-3018-00	2SK3018	R37	119-4731-15	1/10W 47k ohm
C23	168-1045-56	0.1uF Z	Q7	125-2004-92	RN1402	R38	119-2231-15	1/10W 22k ohm
C24	168-1032-55	0.01uF K		125-2020-92	RN1402TE85L	R39	119-2231-15	1/10W 22k ohm
C25	163-1073-15	6.3V100uF	Q8	125-2004-92	RN1402	R40	119-2231-15	1/10W 22k ohm
C26	178-1052-78	1uF		125-2020-92	RN1402TE85L	R41	119-4711-15	1/10W 470 ohm
C27	168-1045-56	0.1uF Z	Q9	125-0014-92	DTA114EK	R42	119-2231-15	1/10W 22k ohm
C28	042-0671-01	10V 47uF TA		125-0002-92	RN2402TE85L	R43	119-2241-15	1/10W 220k ohm
C29	168-1045-56	0.1uF Z	Q53	193-0601-00	2SD601A	R60	119-0000-05	1/10W 0 ohm JW
C30	178-3342-78	0.33uF	R2	119-2211-15	1/10W 220 ohm	R530	119-4731-15	1/10W 47k ohm
C31	042-1673-00	10V 220uF	R4	119-4731-15	1/10W 47k ohm	R550	119-4731-15	1/10W 47k ohm
CCT4	050-0140-55	1/32W 2.2k ohmx4J	R8	119-4731-15	1/10W 47k ohm	TM1	073-0768-90	TERMINAL
CCT5	050-0145-54	1/16W 47k ohm x4	R10	119-2211-15	1/10W 220 ohm	TM2	073-0766-90	TERMINAL
CCT6	050-0145-53	1/16W 220k ohm x4 J	R13	119-1041-15	1/10W 100k ohm	TM4	073-0766-90	TERMINAL
D2	001-2610-90	RB480KTL	R14	119-2221-15	1/10W 2.2k ohm	TM5	073-0766-90	TERMINAL
IC2	051-5445-08	BD5227G-TR	R15	119-1041-15	1/10W 100k ohm	X1	060-1533-90	CSTCE10M0G52-R0
			R16	119-1021-15	1/10W 1k ohm	PWB	039-2532-20	PWB(WITHOUT COMPONENT)

DSP PWB section(BM2)

REF No.	PART No.	DESCRIPTION	REF No.	PART No.	DESCRIPTION	REF No.	PART No.	DESCRIPTION
C1	042-0671-01	10V 47uF TA	C43	042-0671-01	10V 47uF TA	IC9	051-6700-00	TMS320DA140 PGE160
C2	168-4735-56	0.047uF Z	C44	046-6812-58	680pF	IC10	051-3315-90	TPS76316DBVR
C3	046-4722-58	4700pF	C45	168-1045-56	0.1uF Z	IC11	051-7221-58	SN74AHC1G04 HDCKR
C4	046-1032-78	0.01uF	C46	168-1045-56	0.1uF Z	IC12	051-7525-08	SN74LVC2GU04 DCKR
C5	168-1045-56	0.1uF Z	C47	042-0671-01	10V 47uF TA	IC13	051-7526-08	SN74LVC1G126 DCKR
C6	042-0671-01	10V 47uF TA	C48	168-5632-78	16V 0.056uF	J1	074-1201-65	15P
C7	168-1045-56	0.1uF Z	C49	168-1045-56	0.1uF Z	J2	074-1138-56	6P
C8	168-1045-56	0.1uF Z	C50	168-1045-56	0.1uF Z	J3	074-1059-76	26P
C9	045-1007-50	10pF	C51	168-1045-56	0.1uF Z	J4	074-1189-95	45P
C10	168-1045-56	0.1uF Z	C53	168-1045-56	0.1uF Z	J5	074-1201-60	10P
C11	045-1007-50	10pF	C54	042-0671-01	10V 47uF TA	L2	010-3104-54	600ohm / 100MHZ
C12	168-1045-56	0.1uF Z	C56	168-4712-55	470pF K	L3	010-3104-54	600ohm / 100MHZ
C13	042-0672-00	25V 47uF TA	C57	046-1032-78	0.01uF	Q1	131-1188-50	2SB1188PQR
C14	168-4735-56	0.047uF Z	C58	168-4712-55	470pF K	Q2	131-1188-50	2SB1188PQR
C15	168-4735-56	0.047uF Z	C59	168-1045-56	0.1uF Z	Q3	125-2004-92	RN1402
C16	168-4735-56	0.047uF Z	C60	168-1045-56	0.1uF Z		125-2020-92	RN1402TE85L
C17	178-1052-78	1uF	C61	046-1032-78	0.01uF	R1	033-1021-15	1/10W 1k ohm
C18	045-4701-50	47pF	C62	042-0671-01	10V 47uF TA	R2	033-1021-15	1/10W 1k ohm
C19	168-1045-56	0.1uF Z	C63	046-1032-78	0.01uF	R3	033-3311-15	1/10W 330 ohm
C20	046-4712-58	470pF	C64	168-1045-56	0.1uF Z	R4	033-2211-15	1/10W 220 ohm
C21	046-4712-58	470pF	C65	045-1201-50	12pF	R5	033-2211-15	1/10W 220 ohm
C22	168-1045-56	0.1uF Z	C66	046-1032-78	0.01uF	R6	033-1021-15	1/10W 1k ohm
C23	046-1532-78	0.015uF	C67	046-1032-78	0.01uF	R7	033-1051-15	1/10W 1M ohm
C24	168-1045-56	0.1uF Z	C68	168-1045-56	0.1uF Z	R8	033-0000-05	1/10W 0 ohm
C25	046-6822-58	6800pF	C69	045-1201-50	12pF	R10	033-5621-15	1/10W 5.6k ohm
C26	046-1032-78	0.01uF	C101	046-1032-78	0.01uF	R11	033-4731-15	1/10W 47k ohm
C28	046-1022-58	1000pF	C102	046-1032-78	0.01uF	R12	119-3341-15	1/10W 330k ohm
C29	046-3332-78	0.033uF	CCT1	050-0140-68	1/32W 3.3k ohm x4J	R13	033-2231-15	1/10W 22k ohm
C32	046-4722-58	4700pF	CCT4	050-0140-63	1/32W 47k ohm x4J	R14	033-2231-15	1/10W 22k ohm
C33	046-1522-58	1500pF	D1	001-0367-91	1SS226	R15	117-1001-15	1/8W 10 ohm
C34	168-1045-56	0.1uF Z	D2	001-2610-90	RB480KTL	R16	033-5631-15	1/10W 56k ohm
C35	046-1532-78	0.015uF	IC2	051-6399-00	TC94A15F	R17	033-3331-15	1/10W 33k ohm
C36	168-1045-56	0.1uF Z	IC3	051-6060-08	BD7961FM-E2	R18	033-6831-15	1/10W 68k ohm
C37	168-1045-56	0.1uF Z	IC4	051-7518-18	SN74LVC139APWR	R19	033-6831-15	1/10W 68k ohm
C38	042-0671-01	10V 47uF TA	IC5	052-5062-05	MBM29DL800BA-90PFTN	R20	033-1011-15	1/10W 100 ohm
C39	178-1052-78	1uF	IC6	051-7518-18	SN74LVC139APWR			
C40	045-6801-50	68pF	IC7	051-9330-00	K4S641632F-TC60			
C41	168-1045-56	0.1uF Z	IC8	051-7203-48	SN74LV74APW			
C42	178-1052-78	1uF						

REF No.	PART No.	DESCRIPTION
R21	116-4711-15	1/4W 470 ohm
R22	117-1811-15	1/8W 180 ohm
R23	116-4711-15	1/4W 470 ohm
R24	033-2231-15	1/10W 22k ohm
R25	033-2231-15	1/10W 22k ohm
R26	033-2231-15	1/10W 22k ohm
R27	033-1011-15	1/10W 100 ohm
R28	033-4731-15	1/10W 47k ohm
R29	033-2231-15	1/10W 22k ohm
R30	033-4721-15	1/10W 4.7k ohm
R31	033-4721-15	1/10W 4.7k ohm
R32	033-4731-15	1/10W 47k ohm
R33	033-4731-15	1/10W 47k ohm
R35	033-4731-15	1/10W 47k ohm
R36	033-3311-15	1/10W 330 ohm
R37	033-4731-15	1/10W 47k ohm
R38	033-3311-15	1/10W 330 ohm

REF No.	PART No.	DESCRIPTION
R39	033-2211-15	1/10W 220 ohm
R40	033-1011-15	1/10W 100 ohm
R41	033-1001-15	1/10W 10 ohm
R42	033-1001-15	1/10W 10 ohm
R45	033-1011-15	1/10W 100 ohm
R46	033-4731-15	1/10W 47k ohm
R47	033-4731-15	1/10W 47k ohm
R48	033-1011-15	1/10W 100 ohm
R49	033-0000-05	1/10W 0 ohm
R50	033-0000-05	1/10W 0 ohm
R51	033-8231-15	1/10W 82k ohm
R52	033-0000-05	1/10W 0 ohm
R53	033-4731-15	1/10W 47k ohm
R63	033-2231-15	1/10W 22k ohm
R64	033-2231-15	1/10W 22k ohm
R65	033-4731-15	1/10W 47k ohm
R66	033-4731-15	1/10W 47k ohm

REF No.	PART No.	DESCRIPTION
R100	033-1011-15	1/10W 100 ohm
R101	033-1011-15	1/10W 100 ohm
R102	033-1011-15	1/10W 100 ohm
R103	033-1011-15	1/10W 100 ohm
R104	033-1011-15	1/10W 100 ohm
R105	033-1011-15	1/10W 100 ohm
R106	033-1011-15	1/10W 100 ohm
R107	033-4731-15	1/10W 47k ohm
R200	033-1051-15	1/10W 1M ohm
R201	033-1021-15	1/10W 1k ohm
R202	033-1021-15	1/10W 1k ohm
R220	033-4731-15	1/10W 47k ohm
R301	119-2231-15	1/10W 22k ohm
R302	119-3911-15	1/10W 390 ohm
X1	061-3534-90	16.92MHz
PWB	039-2531-20	PWB(WITHOUT COMPONENT)

Sensor PWB sction(BM3)

REF No.	PART No.	DESCRIPTION
PT3	060-0252-01	PT4850F
PT4	060-0252-01	PT4850F
PT5	060-0252-01	PT4850F
PT6	060-0252-01	PT4850F

REF No.	PART No.	DESCRIPTION
S1	013-7414-50	SPVG22
PWB	039-1956-00	PWB(WITHOUT COMPONET)

PIM-FPC section(BM4)

REF No.	PART No.	DESCRIPTION
IC5	051-5806-02	GPIS95

Driver PWB section(BM5)

REF No.	PART No.	DESCRIPTION
C1	168-1045-56	0.1uF
C2	163-1073-35	16V100uF
D1	001-0529-29	MA8051-M
IC1	051-6044-18	BA6920FP-Y

REF No.	PART No.	DESCRIPTION
J1	074-1239-76	26P
J2	074-1100-59	9P
R1	033-1021-15	1/10W 1k ohm
R2	032-0104-59	1/4W 2.2 ohm

REF No.	PART No.	DESCRIPTION
R3	032-0104-59	1/4W 2.2 ohm
S1	013-7412-50	SPVG21
PWB	039-2242-00	PWB(WITHOUT COMPONET)

PIV-FPC section(BM6)

REF No.	PART No.	DESCRIPTION
IC6	051-5806-01	GPIS93

LED-L-PWB section(BM7)

REF No.	PART No.	DESCRIPTION
LED3	001-7042-00	GL4800
LED4	001-7042-00	GL4800

REF No.	PART No.	DESCRIPTION
PWB	039-1954-20	PWB(WITHOUT COMPONET)

LED-R-PWB section(BM8)

REF No.	PART No.	DESCRIPTION
LED5	001-7042-00	GL4800
LED6	001-7042-00	GL4800

REF No.	PART No.	DESCRIPTION
PWB	039-1955-20	PWB(WITHOUT COMPONET)

L-Motor-FPC section(BM9)

REF No.	PART No.	DESCRIPTION
M1	SMA-186-100	LOADING

M/S-FPC section(BM10)

REF No.	PART No.	DESCRIPTION
M2	SMA-196-100	SPINDLE

REF No.	PART No.	DESCRIPTION
M3	SMA-191-100	SLED

REF No.	PART No.	DESCRIPTION
S2	013-7414-50	SPVG22