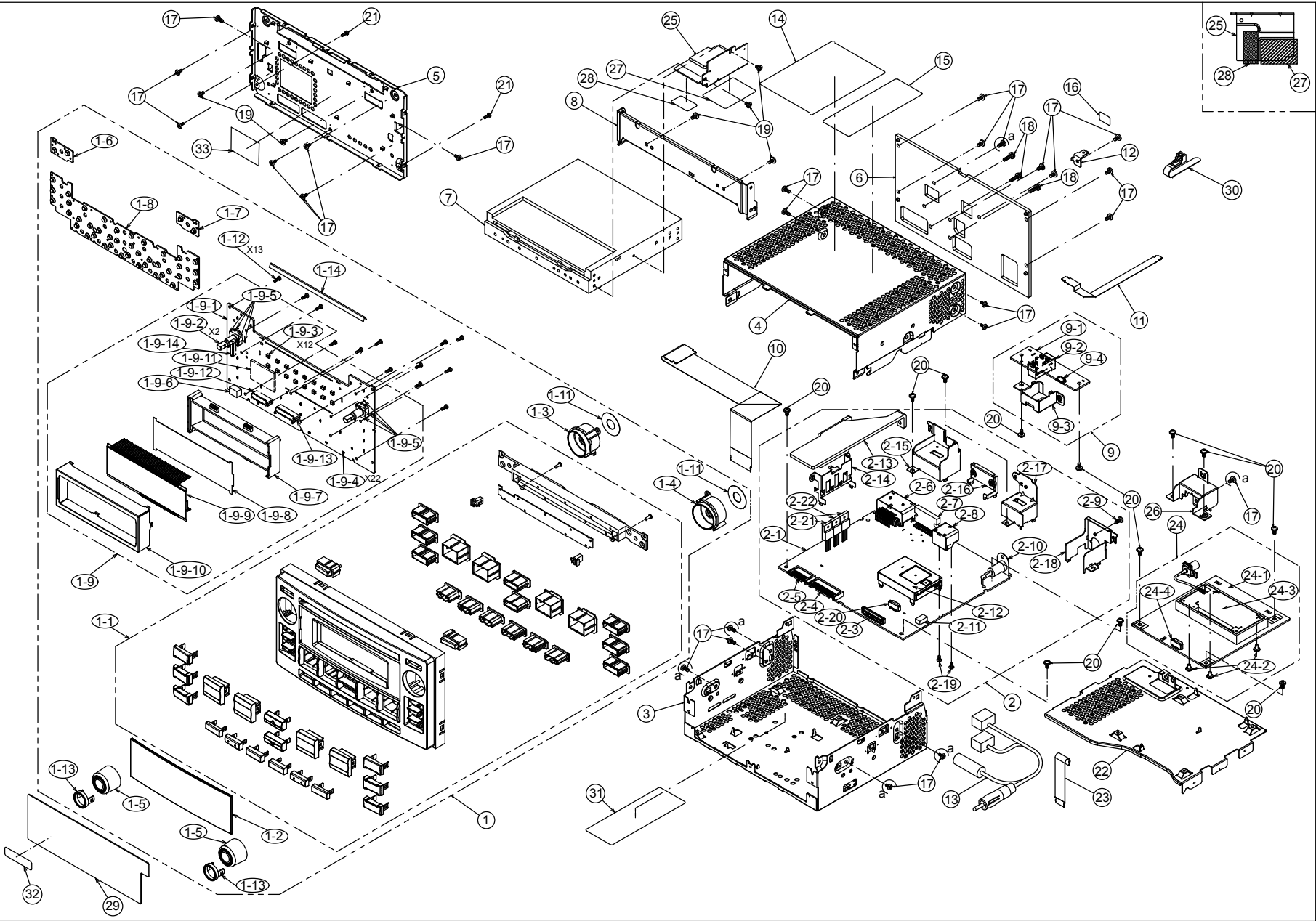


EXPLODED VIEW / PARTS LIST



PF-3629A-A

NO.	PART NO.	DESCRIPTION	Q'TY	NO.	PART NO.	DESCRIPTION	Q'TY
1	-----	PANEL-ASSY(3627A0-45/PF3627AA)	1	2-19	778-3006-00	TAP-SCREW	2
	-----	PANEL-ASSY(3629A0-45/PF3629AA)	1	2-20	074-2264-70	OUTLET SOCKET	1
	-----	PANEL-ASSY(3630A0-45/PF3630AA)	1	2-21	051-3333-00	IC	2
1-1	940-8740-01	ES-ASSY(for PF3627AA)	1	2-22	051-3366-00	IC	1
	940-8740-11	ES-ASSY(for PF3629AA)	1	3	311-2049-00	LOWER CASE	1
	940-8740-21	ES-ASSY(for PF3630AA)	1	4	310-1920-01	UPPER CASE	1
1-2	373-1194-22	DIAL-CVR	1	5	309-1960-02	ES PLATE	1
1-3	335-8802-00	ILLUMI RING(L)	1	6	313-2161-11	HEAT SINK	1
1-4	335-8831-00	ILLUMI RING(R)	1	7	929-5220-81	CD-MECH-MODULE	1
1-5	380-5796-01	KNOB	2	8	331-5343-00	MECH BRKT	1
1-6	345-6424-00	RUBBER SW(UP-L)	1	9	-----	SUB-PWB-ASSY(3486A7-79)	1
1-7	345-6426-00	RUBBER SW(UP-R)	1	9-1	-----	SUB PWB(401000-039)	1
1-8	345-6425-00	RUBBER SW(MID)	1	9-2	074-4061-04	OUTLET SOCKET	1
1-9	-----	SW-PWB-ASSY(3486A7-77)	1	9-3	331-5344-00	USB HOLDER	1
1-9-1	-----	SW PWB(408300-039)	1	9-4	074-2262-60	OUTLET SOCKET	1
1-9-2	016-0018-24	VR W/SHAFT	2	10	816-3121-55	FLAT WIRE	1
1-9-3	001-7140-90	DIODE(WHT)	12	11	816-3119-55	FLAT WIRE	1
1-9-4	001-7141-90	DIODE(RED)	22	12	331-3579-20	EARTH PLATE	1
1-9-5	001-7094-92	DIODE(RED)	8	13	093-2218-00	ANT-JUMPER	1
1-9-6	060-8094-50	CERAMIC-ANT	1	14	276-1136-13	SETPLATE(for PF3627AA)	1
1-9-7	335-9360-02	LCD-HOLDER	1		276-1136-14	SETPLATE(for PF3629AA)	1
1-9-8	335-8828-00	FILTER	1		276-1136-15	SETPLATE(for PF3630AA)	1
1-9-9	379-1474-63	LCD	1	15	290-0754-00	LABEL	1
1-9-10	331-4918-00	LCD-CVR	1	16	290-0548-47	LABEL(for PF3627AA)	1
1-9-11	060-8144-90	BLUETOOTH MODUL	1		290-0548-48	LABEL(for PF3629AA)	1
1-9-12	074-3055-20	OUTLET SOCKET	1		290-0548-49	LABEL(for PF3630AA)	1
1-9-13	074-3055-24	OUTLET SOCKET	1	17	714-2606-8B	MACHINE SCREW	25
1-9-14	076-6000-65	PLUG	1	18	735-2614-1B	D-SEMS SCREW	3
1-11	347-8873-00	SHADE	2	19	714-2603-89	MACHINE SCREW	6
1-12	716-0778-52	SPECIAL SCREW	13	20	716-0878-50	SPECIAL SCREW	12
1-13	380-5797-01	KNOB RING	2	21	716-0778-52	SPECIAL SCREW	2
1-14	347-9245-00	FILM	1	22	331-5345-01	XM BRKT	1
2	-----	MAIN-PWB-ASSY(3627A7-75/PF3627AA)	1	23	816-3120-55	FLAT WIRE	1
	-----	MAIN-PWB-ASSY(3629A7-75/PF3629AA)	1	24	-----	XM-PWB-ASSY(3486A7-78)(PF3627AA)	1
	-----	MAIN-PWB-ASSY(3630A7-75/PF3630AA)	1		-----	XM-PWB-ASSY(3630A7-78)(PF3629AA)	1
2-1	-----	MAIN PWB(400700-039)	1		-----	XM-PWB-ASSY(3630A7-78)(PF3630AA)	1
2-2	-	-	-	24-1	-----	XM-PWB(400800-039)	1
2-3	074-2261-00	OUTLET SOCKET	1	24-2	780-2604-50	IT SCREW	3
2-4	076-3011-74	PLUG	1	24-3	941-0251-60	TUNER PACK(for PF3627AA)	1
2-5	076-3011-70	PLUG	1		941-0251-70	TUNER PACK(for PF3629AA)	1
2-6	074-4009-20	OUTLET SOCKET	1		941-0251-70	TUNER PACK(for PF3630AA)	1
2-7	051-2064-00	IC	1	24-4	074-2264-70	OUTLET SOCKET	1
2-8	074-1302-16	OUTLET SOCKET	1	25	331-5347-01	SUB MECH BRKT	1
2-9	714-2606-8B	MACHINE SCREW	1	26	331-5346-00	ANT HOLDER	1
2-10	092-0702-50	ANT-RECEPT	1	27	347-9128-00	PROTECTOR	1
2-11	076-0478-59	PLUG	1	28	347-9129-00	PROTECTOR	1
2-12	941-0258-01	TUNER PACK	1	29	347-9145-00	PROTECTOR	1
2-13	313-2162-00	SUB HEAT SINK	1	30	335-9440-00	LEAD HOLDER	1
2-14	331-4414-00	TR HOLDER	1	31	290-8160-20	LABEL	1
2-15	331-5341-00	OUTLET HOLDER	1	32	290-0739-02	LABEL(for PF36327AA)	1
2-16	331-4678-00	IC-HOLDER	1		290-0739-03	LABEL(for PF36329AA)	1
2-17	331-5342-00	OUTLET HOLDER	1		290-0739-04	LABEL(for PF36330AA)	1
2-18	331-4915-00	OUTLET HOLDER	1	33	-	N/A(LABEL)	-

ELECTRICAL PARTS LIST

MAIN PWB(B1) section

Neither the part numbers of parts on which software is written, nor part numbers of parts for which replacement is prohibited in the production process are listed in the parts list.

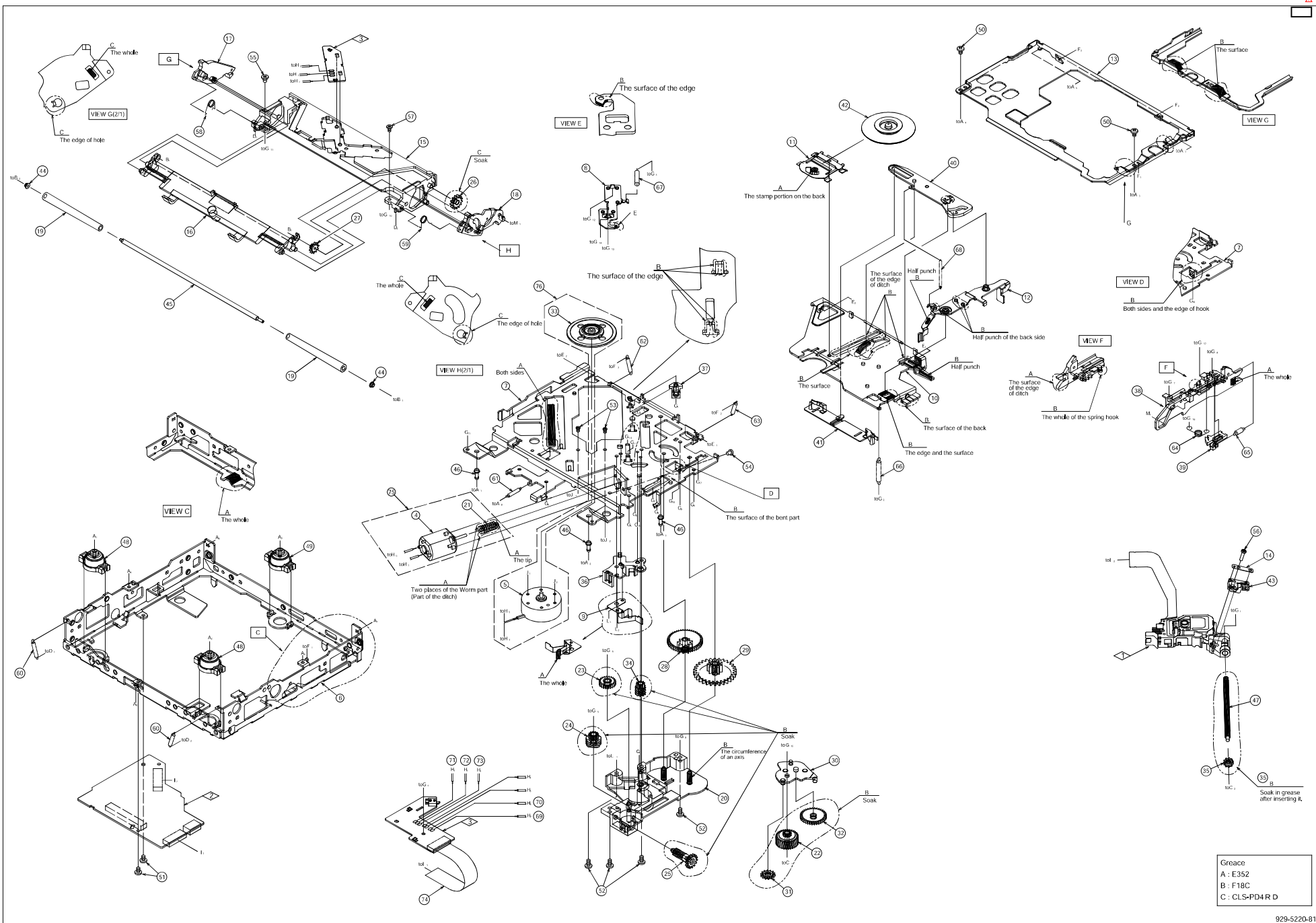
PF-3629A-A (MID-USA)			PF-3630A-A (LOW-USA) PF-3627A-A (LOW-CAN)			PF-3629A-A (MID-USA)			PF-3630A-A (LOW-USA) PF-3627A-A (LOW-CAN)			PF-3629A-A (MID-USA)			PF-3630A-A (LOW-USA) PF-3627A-A (LOW-CAN)		
REF. NO.	PART NO.	DESCRIPTION	REF. NO.	PART NO.	DESCRIPTION	REF. NO.	PART NO.	DESCRIPTION	REF. NO.	PART NO.	DESCRIPTION	REF. NO.	PART NO.	DESCRIPTION	REF. NO.	PART NO.	DESCRIPTION
ANT102	092-0702-50	ANT-RECEPT	ANT102	092-0702-50	ANT-RECEPT	C268	046-1042-78	0.1uF K B	C268	046-1042-78	0.1uF K B	C510	043-0603-90	16V 10uF	C510	043-0603-90	16V 10uF
C109	166-1201-50	12pF CH	C109	166-1201-50	12pF CH	C269	046-1022-58	50V 1000pF	C269	046-1022-58	50V 1000pF	C511	168-1052-78	16V 1uF K	C511	168-1052-78	16V 1uF K
C112	045-2201-50	22pF CH	C112	045-2201-50	22pF CH	C271	046-1022-58	50V 1000pF	C271	046-1022-58	50V 1000pF	C512	168-1022-55	1000pF K	C512	168-1022-55	1000pF K
C113	046-1022-58	50V 1000pF	C113	046-1022-58	50V 1000pF	C272	046-1022-58	50V 1000pF	C272	046-1022-58	50V 1000pF	C513	042-1769-90	6.3V 220uF M	C513	042-1769-90	6.3V 220uF M
C114	045-5096-50	5 +/-0.25pF CH	C114	045-5096-50	5 +/-0.25pF CH	C273	046-1022-58	50V 1000pF	C273	046-1022-58	50V 1000pF	C514	043-0554-90	25V 10uF	C514	043-0554-90	25V 10uF
C115	046-1022-58	50V 1000pF	C115	046-1022-58	50V 1000pF	C275	042-0643-58	6.3V 330uF	C275	042-0643-58	6.3V 330uF	C515	168-1042-78	16V 0.1uF K	C515	168-1042-78	16V 0.1uF K
C116	045-1501-50	15pF CH	C116	045-1501-50	15pF CH	C276	046-1042-78	0.1uF K B	C276	046-1042-78	0.1uF K B	C516	168-1042-78	16V 0.1uF K	C516	168-1042-78	16V 0.1uF K
C117	046-1042-78	0.1uF K B	C117	046-1042-78	0.1uF K B	C278	046-6812-58	680pF K B	C278	046-6812-58	680pF K B	C517	168-3342-58	0.33uF K	C517	168-3342-58	0.33uF K
C120	045-3901-50	39pF CH	C120	045-3901-50	39pF CH	C279	046-6812-58	680pF K B	C279	046-6812-58	680pF K B	C518	168-1042-78	16V 0.1uF K	C518	168-1042-78	16V 0.1uF K
C121	045-1011-50	100pF CH	C121	045-1011-50	100pF CH	C280	046-6812-58	680pF K B	C280	046-6812-58	680pF K B	C519	166-1501-50	15pF CH	C519	166-1501-50	15pF CH
C122	045-1211-50	120pF CH	C122	045-1211-50	120pF CH	C281	046-6812-58	680pF K B	C281	046-6812-58	680pF K B	C520	165-4763-15	6.3V 47uF	C520	165-4763-15	6.3V 47uF
C123	046-3922-58	3900pF K B	C123	046-3922-58	3900pF K B	C282	043-0540-00	6.3V 10uF	C282	043-0540-00	6.3V 10uF	C521	042-1769-90	6.3V 220uF M	C521	042-1769-90	6.3V 220uF M
C124	046-1022-58	50V 1000pF	C124	046-1022-58	50V 1000pF	C283	168-1042-78	16V 0.1uF K	C283	168-1042-78	16V 0.1uF K	C522	168-1042-78	16V 0.1uF K	C522	168-1042-78	16V 0.1uF K
C125	046-1042-78	0.1uF K B	C125	046-1042-78	0.1uF K B	C284	043-0570-90	16V 2.2uF K	C284	043-0570-90	16V 2.2uF K	C523	168-1042-78	16V 0.1uF K	C523	168-1042-78	16V 0.1uF K
C126	168-3342-58	0.33uF K	C126	168-3342-58	0.33uF K	C285	168-1022-55	1000pF K	C285	168-1022-55	1000pF K	C524	168-1052-78	16V 1uF K	C524	168-1052-78	16V 1uF K
C127	046-1032-78	0.01uF K B	C127	046-1032-78	0.01uF K B	C286	043-0540-00	6.3V 10uF	C286	043-0540-00	6.3V 10uF	C525	168-1022-55	1000pF K	C525	168-1022-55	1000pF K
C128	046-1032-78	0.01uF K B	C128	046-1032-78	0.01uF K B	C287	168-1042-78	16V 0.1uF K	C287	168-1042-78	16V 0.1uF K	C526	168-1022-55	1000pF K	C526	168-1022-55	1000pF K
C129	045-5096-50	5 +/-0.25pF CH	C129	045-5096-50	5 +/-0.25pF CH	C288	168-1042-78	16V 0.1uF K	C288	168-1042-78	16V 0.1uF K	C527	168-1042-78	16V 0.1uF K	C527	168-1042-78	16V 0.1uF K
C130	046-3322-58	3300pF K B	C130	046-3322-58	3300pF K B	C289	166-1201-50	12pF CH	C289	166-1201-50	12pF CH	C528	168-3342-58	0.33uF K	C528	168-3342-58	0.33uF K
C131	046-2232-78	0.022uF K B	C131	046-2232-78	0.022uF K B	C290	166-1201-50	12pF CH	C290	166-1201-50	12pF CH	C529	165-1073-35	16V 100uF	C529	165-1073-35	16V 100uF
C132	046-1022-58	50V 1000pF	C132	046-1022-58	50V 1000pF	C291	168-2245-79	0.22uF Z	C291	168-2245-79	0.22uF Z	C531	168-1022-55	1000pF K	C531	168-1022-55	1000pF K
C133	046-2232-78	0.022uF K B	C133	046-2232-78	0.022uF K B	C293	168-1022-55	1000pF K	C293	168-1022-55	1000pF K	C601	165-4763-15	6.3V 47uF	C601	165-4763-15	6.3V 47uF
C134	043-0552-90	6.3V 47uF M	C134	043-0552-90	6.3V 47uF M	C294	166-4701-50	47pF CH	C294	166-4701-50	47pF CH	C602	168-1042-78	16V 0.1uF K	C602	168-1042-78	16V 0.1uF K
C135	168-2242-58	0.22uF K	C135	168-2242-58	0.22uF K	C295	166-4701-50	47pF CH	C295	166-4701-50	47pF CH	C603	168-1022-55	1000pF K	C603	168-1022-55	1000pF K
C136	046-2232-78	0.022uF K B	C136	046-2232-78	0.022uF K B	C296	166-4701-50	47pF CH	C296	166-4701-50	47pF CH	C604	168-1042-38	50V 0.1uF K	C604	168-1042-38	50V 0.1uF K
C137	046-2232-78	0.022uF K B	C137	046-2232-78	0.022uF K B	C297	166-1007-50	10pF CH	C297	166-1007-50	10pF CH	C606	165-1073-35	16V 100uF	C606	165-1073-35	16V 100uF
C138	046-2232-78	0.022uF K B	C138	046-2232-78	0.022uF K B	C298	168-1022-55	1000pF K	C298	168-1022-55	1000pF K	C608	168-1042-78	16V 0.1uF K	C608	168-1042-78	16V 0.1uF K
C139	046-2232-78	0.022uF K B	C139	046-2232-78	0.022uF K B	C301	168-1042-78	16V 0.1uF K	C301	168-1042-78	16V 0.1uF K	C612	165-1053-65	50V 1uF	C612	165-1053-65	50V 1uF
C148	046-1022-58	50V 1000pF	C148	046-1022-58	50V 1000pF	C302	165-1073-35	16V 100uF	C302	165-1073-35	16V 100uF	C614	165-4763-15	6.3V 47uF	C614	165-4763-15	6.3V 47uF
C151	043-6401-90	16V 10uF	C151	043-6401-90	16V 10uF	C303	165-1073-35	16V 100uF	C303	165-1073-35	16V 100uF	C616	168-1042-78	16V 0.1uF K	C616	168-1042-78	16V 0.1uF K
C202	168-1042-78	16V 0.1uF K	C202	168-1042-78	16V 0.1uF K	C304	178-2255-79	2.2uF	C304	178-2255-79	2.2uF	C617	168-1022-55	1000pF K	C617	168-1022-55	1000pF K
C203	178-2255-79	2.2uF	C203	178-2255-79	2.2uF	C305	178-2255-79	2.2uF	C305	178-2255-79	2.2uF	C619	168-1042-38	50V 0.1uF K	C619	168-1042-38	50V 0.1uF K
C204	178-2255-79	2.2uF	C204	178-2255-79	2.2uF	C306	178-2255-79	2.2uF	C306	178-2255-79	2.2uF	C620	043-6401-90	16V 10uF	C620	043-6401-90	16V 10uF
C205	178-2255-79	2.2uF	C205	178-2255-79	2.2uF	C307	178-2255-79	2.2uF	C307	178-2255-79	2.2uF	C621	165-1073-15	6.3V 100uF	C621	165-1073-15	6.3V 100uF
C206	178-2255-79	2.2uF	C206	178-2255-79	2.2uF	C308	168-1042-78	16V 0.1uF K	C308	168-1042-78	16V 0.1uF K	C622	168-1042-78	16V 0.1uF K	C622	168-1042-78	16V 0.1uF K
C207	166-2201-50	22pF CH	C207	166-2201-50	22pF CH	C311	166-5611-50	560pF CH	C311	166-5611-50	560pF CH	C623	168-3342-58	0.33uF K	C623	168-3342-58	0.33uF K
C208	166-2201-50	22pF CH	C208	166-2201-50	22pF CH	C312	166-5611-50	560pF CH	C312	166-5611-50	560pF CH	C624	165-4763-15	6.3V 47uF	C624	165-4763-15	6.3V 47uF
C209	166-2201-50	22pF CH	C209	166-2201-50	22pF CH	C313	166-2711-50	270pF CH	C313	166-2711-50	270pF CH	C625	168-1042-78	16V 0.1uF K	C625	168-1042-78	16V 0.1uF K
C210	166-2201-50	22pF CH	C210	166-2201-50	22pF CH	C315	166-2711-50	270pF CH	C315	166-2711-50	270pF CH	C626	165-1073-35	16V 100uF	C626	165-1073-35	16V 100uF
C211	168-4752-98	4.7uF K	C211	168-4752-98	4.7uF K	C316	166-2201-50	22pF CH	C316	166-2201-50	22pF CH	C627	168-1042-78	16V 0.1uF K	C627	168-1042-78	16V 0.1uF K
C212	168-4752-98	4.7uF K	C212	168-4752-98	4.7uF K	C317	166-2201-50	22pF CH	C317	166-2201-50	22pF CH	C628	168-1042-78	16V 0.1uF K	C628	168-1042-78	16V 0.1uF K
C213	178-1052-78	25V 1uF	C213	178-1052-78	25V 1uF	C319	168-1042-78	16V 0.1uF K	C319	168-1042-78	16V 0.1uF K	C630	168-1042-38	50V 0.1uF K	C630	168-1042-38	50V 0.1uF K
C214	178-1052-78	25V 1uF	C214	178-1052-78	25V 1uF	C320	165-1073-35	16V 100uF	C320	165-1073-35	16V 100uF	C631	165-4763-35	16V 47uF	C631	165-4763-35	16V 47uF
C219	046-1042-78	0.1uF K B	C219	046-1042-78	0.1uF K B	C321	166-2201-50	22pF CH	C321	166-2201-50	22pF CH	C633	165-1073-35	16V 100uF	C633	165-1073-35	16V 100uF
C222	166-2201-50	22pF CH	C222	166-2201-50	22pF CH	C322	166-2201-50	22pF CH	C322	166-2201-50	22pF CH	C634	168-1042-78	16V 0.1uF K	C634	168-1042-78	16V 0.1uF K
C223	166-2201-50	22pF CH	C223	166-2201-50	22pF CH	C325	165-1073-35	16V 100uF	C325	165-1073-35	16V 100uF	C635	168-1042-38	50V 0.1uF K	C635	168-1042-38	50V 0.1uF K
C227	046-1042-78	0.1uF K B	C227	046-1042-78	0.1uF K B	C328	166-5611-50	560pF CH	C328	166-5611-50	560pF CH	C636	165-1073-35	16V 100uF	C636	165-1073-35	16V 100uF
C228	046-1042-78	0.1uF K B	C228	046-1042-78	0.1uF K B	C331	166-5611-50	560pF CH	C331	166-5611-50	560pF CH	C637	043-8000-90	50V 0.1uF	C637	043-8000-90	50V 0.1uF
C229	046-2232-78	0.022uF K B	C229	046-													

PF-3629A-A (MID-USA)			PF-3630A-A (LOW-USA) PF-3627A-A (LOW-CAN)		
REF NO.	PART NO.	DESCRIPTION	REF NO.	PART NO.	DESCRIPTION
C807	168-1032-65	0.01uF K	C807	168-1032-65	0.01uF K
C812	166-1007-60	10pF CH	C812	166-1007-60	10pF CH
C813	165-1063-35	16V 10uF	C813	165-1063-35	16V 10uF
C814	043-8000-90	50V 0.1uF	C814	043-8000-90	50V 0.1uF
C815	166-1007-50	10pF CH	C815	166-1007-50	10pF CH
C816	165-1053-65	50V 1uF	C816	165-1053-65	50V 1uF
C817	043-8000-90	50V 0.1uF	C817	043-8000-90	50V 0.1uF
C818	042-1624-00	16V 4700uF	C818	042-1624-00	16V 4700uF
C819	165-1063-35	16V 10uF	C819	165-1063-35	16V 10uF
C820	165-1073-35	16V 100uF	C820	165-1073-35	16V 100uF
C821	165-1063-35	16V 10uF	C821	165-1063-35	16V 10uF
C822	168-8212-65	820pF K	C822	168-8212-65	820pF K
C823	168-8212-65	820pF K	C823	168-8212-65	820pF K
C824	166-1011-50	100pF CH	C824	166-1011-50	100pF CH
C825	168-8212-65	820pF K	C825	168-8212-65	820pF K
C826	168-8212-65	820pF K	C826	168-8212-65	820pF K
C827	168-8212-65	820pF K	C827	168-8212-65	820pF K
C828	168-8212-65	820pF K	C828	168-8212-65	820pF K
C829	168-8212-65	820pF K	C829	168-8212-65	820pF K
C830	168-8212-65	820pF K	C830	168-8212-65	820pF K
C831	168-1042-78	16V 0.1uF K	C831	168-1042-78	16V 0.1uF K
C832	168-1022-65	1000pF K	C832	168-1022-65	1000pF K
C833	168-1032-65	0.01uF K	C833	168-1032-65	0.01uF K
C834	168-1042-78	16V 0.1uF K	C834	168-1042-78	16V 0.1uF K
C835	168-1022-65	1000pF K	C835	168-1022-65	1000pF K
C836	168-1042-78	16V 0.1uF K	C836	168-1042-78	16V 0.1uF K
C837	042-4043-90	35V 4.7uF	C837	042-4043-90	35V 4.7uF
C838	168-1022-65	1000pF K	C838	168-1022-65	1000pF K
C839	165-1063-35	16V 10uF	C839	165-1063-35	16V 10uF
C840	168-1042-78	16V 0.1uF K	C840	168-1042-78	16V 0.1uF K
C841	165-1073-35	16V 100uF	C841	165-1073-35	16V 100uF
C843	168-1042-78	16V 0.1uF K	C843	168-1042-78	16V 0.1uF K
C2005	045-5601-50	56pF J CH	C2005	045-5601-50	56pF J CH
C2006	045-5601-50	56pF J CH	C2006	045-5601-50	56pF J CH
D101	001-9013-90	BA891	D101	001-9013-90	BA891
D102	001-9013-90	BA891	D102	001-9013-90	BA891
D103	001-0516-90	MA111	D103	001-0516-90	MA111
D403	001-0535-90	MA729	D403	001-0535-90	MA729
D404	001-0516-90	MA111	D404	001-0516-90	MA111
D501	001-0516-90	MA111	D501	001-0516-90	MA111
D605	001-2403-90	M1F60	D605	001-2403-90	M1F60
D606	001-2620-90	RB060L-40	D606	001-2620-90	RB060L-40
D803	001-2403-90	M1F60	D803	001-2403-90	M1F60
D805	001-2403-90	M1F60			
D806	001-2403-90	M1F60			
D810	001-0535-90	MA729	D810	001-0535-90	MA729
D811	001-0516-90	MA111	D811	001-0516-90	MA111
D816	001-2403-90	M1F60	D816	001-2403-90	M1F60
D818	001-2403-90	M1F60	D818	001-2403-90	M1F60
D819	001-2403-90	M1F60	D819	001-2403-90	M1F60
D823	001-2403-90	M1F60	D823	001-2403-90	M1F60
D824	001-2403-90	M1F60	D824	001-2403-90	M1F60
D825	001-0580-90	1SS352	D825	001-0580-90	1SS352
D827	001-2403-90	M1F60	D827	001-2403-90	M1F60
FE701	941-0258-01	HD-TUNER 91UMAH5S.G02AG NJM286DL3-05-TE1 (Voltage regulator) (Thermal pad type) (336890-051)	FE701	941-0258-01	HD-TUNER 91UMAH5S.G02AG NJM286DL3-05-TE1 (Voltage regulator) (Thermal pad type) (336890-051)
IC101	_____	TEF7000 (Tuner) (Thermal pad type) (402590-051)	IC101	_____	TEF7000 (Tuner) (Thermal pad type) (402590-051)
IC102	_____	SAF7741HV/N125 (DSP) (Thermal pad type) (674700-051)	IC102	_____	SAF7741HV/N125 (DSP) (Thermal pad type) (674700-051)
IC201	_____	_____	IC201	_____	_____
IC203	125-7007-90	Si5441BDC-TI-E3	IC203	051-5854-90	CLS78831J-TE2
IC301	051-3034-90	NJM4558V	IC301	051-3034-90	NJM4558V
IC302	051-3019-90	NJM2060V	IC302	051-3019-90	NJM2060V
IC305	051-2064-00	TB2928HQ	IC305	051-2064-00	TB2928HQ
IC401	_____	RSF64168PFB (FLASH) (Software should be written on production) (034830-052)	IC401	_____	RSF64168PFB (FLASH) (Software should be written on production) (034830-052)
IC402	051-5481-90	S-1009N30I-M5T1U	IC402	051-5481-90	S-1009N30I-M5T1U

PF-3629A-A (MID-USA)			PF-3630A-A (LOW-USA) PF-3627A-A (LOW-CAN)		
REF NO.	PART NO.	DESCRIPTION	REF NO.	PART NO.	DESCRIPTION
IC403	_____	S-24CM01CI-J8T5U4 (E2P-ROM) (Software should be written on production) (943690-051)	IC403	_____	S-24CM01CI-J8T5U4 (E2P-ROM) (Software should be written on production) (943690-051)
IC404	051-5441-08	BD4828G-TR AK4633VN (Thermal pad type) (653190-051)	IC404	051-5441-08	BD4828G-TR AK4633VN (Thermal pad type) (653190-051)
IC501	_____	_____	IC501	_____	_____
IC502	051-3026-90	NJM4580V	IC502	051-3026-90	NJM4580V
IC503	051-3718-90	NJM2846DL3-15	IC503	051-3718-90	NJM2846DL3-15
IC504	051-3553-90	NJM2865F3-05	IC504	051-3553-90	NJM2865F3-05
IC505	051-3367-90	NJU7780U1-33-TE2	IC505	051-3367-90	NJU7780U1-33-TE2
IC506	051-3396-90	NJM2386ADL3-33-TE1	IC506	051-3396-90	NJM2386ADL3-33-TE1
IC601	051-3333-00	NJM2396F05	IC601	051-3333-00	NJM2396F05
IC602	051-3397-90	NJM2386ADL3-09-TE1	IC602	051-3397-90	NJM2386ADL3-09-TE1
IC604	051-3333-00	NJM2396F05	IC604	051-3333-00	NJM2396F05
IC605	051-3719-90	NJM2886DL3-33	IC605	051-3719-90	NJM2886DL3-33
IC606	051-3367-90	NJU7780U1-33-TE2	IC606	051-3367-90	NJU7780U1-33-TE2
IC607	051-3366-00	NJM2396F08	IC607	051-3366-00	NJM2396F08
IC608	051-3585-90	BD3571HFP	IC608	051-3585-90	BD3571HFP
IC609	051-3396-90	NJM2386ADL3-33-TE1	IC609	051-3396-90	NJM2386ADL3-33-TE1
IC610	051-3628-90	OZ529IGNA1-0-TR	IC610	051-3628-90	OZ529IGNA1-0-TR
J401	076-3011-74	24P	J401	076-3011-74	24P
J501	076-3011-70	20P	J501	076-3011-70	20P
J601	074-2261-00	50P	J601	074-2261-00	50P
J801	074-1302-16	16P	J801	074-1302-16	16P
J802	074-4009-20	20P	J802	074-4009-20	20P
L107	010-3062-54	290nH	L107	010-3062-54	290nH
L108	010-3406-56	3.3uH J	L108	010-3406-56	3.3uH J
L109	010-3062-56	0.5uH	L109	010-3062-56	0.5uH
L110	010-3062-53	0.215uH	L110	010-3062-53	0.215uH
L111	010-3439-51	1.8uH	L111	010-3439-51	1.8uH
L113	010-2290-52	330uH	L113	010-2290-52	330uH
L114	010-2290-52	330uH	L114	010-2290-52	330uH
L115	010-3105-62	1k ohm/100MHz	L115	010-3105-62	1k ohm/100MHz
L201	010-3104-54	600 ohm/100MHz	L201	010-3104-54	600 ohm/100MHz
L202	010-3104-54	600 ohm/100MHz	L202	010-3104-54	600 ohm/100MHz
L204	010-3104-54	600 ohm/100MHz	L204	010-3104-54	600 ohm/100MHz
L205	010-3105-62	1k ohm/100MHz	L205	010-3105-62	1k ohm/100MHz
L206	010-3104-54	600 ohm/100MHz	L206	010-3104-54	600 ohm/100MHz
L207	010-3104-54	600 ohm/100MHz	L207	010-3104-54	600 ohm/100MHz
L208	010-3104-54	600 ohm/100MHz	L208	010-3104-54	600 ohm/100MHz
L209	010-3104-54	600 ohm/100MHz	L209	010-3104-54	600 ohm/100MHz
L210	010-3104-54	600 ohm/100MHz	L210	010-3104-54	600 ohm/100MHz
L213	010-3104-54	600 ohm/100MHz	L213	010-3104-54	600 ohm/100MHz
L214	010-3104-54	600 ohm/100MHz	L214	010-3104-54	600 ohm/100MHz
L215	010-3104-54	600 ohm/100MHz	L215	010-3104-54	600 ohm/100MHz
L216	010-3104-54	600 ohm/100MHz	L216	010-3104-54	600 ohm/100MHz
L217	010-3105-62	1k ohm/100MHz	L217	010-3105-62	1k ohm/100MHz
L218	010-3105-62	1k ohm/100MHz	L218	010-3105-62	1k ohm/100MHz
L219	010-3104-54	600 ohm/100MHz	L219	010-3104-54	600 ohm/100MHz
L220	010-3105-62	1k ohm/100MHz	L220	010-3105-62	1k ohm/100MHz
L221	010-3104-54	600 ohm/100MHz	L221	010-3104-54	600 ohm/100MHz
L222	010-3104-54	600 ohm/100MHz	L222	010-3104-54	600 ohm/100MHz
L223	010-3104-54	600 ohm/100MHz	L223	010-3104-54	600 ohm/100MHz
L234	010-3103-65	120 ohm/100MHz	L234	010-3103-65	120 ohm/100MHz
L235	010-3103-65	120 ohm/100MHz	L235	010-3103-65	120 ohm/100MHz
L236	010-3103-65	120 ohm/100MHz	L236	010-3103-65	120 ohm/100MHz
L237	119-0000-05	1/10W 0 ohm JW	L237	119-0000-05	1/10W 0 ohm JW
L238	119-0000-05	1/10W 0 ohm JW	L238	119-0000-05	1/10W 0 ohm JW
L239	119-0000-05	1/10W 0 ohm JW	L239	119-0000-05	1/10W 0 ohm JW
L240	010-3105-62	1k ohm/100MHz	L240	010-3105-62	1k ohm/100MHz
L241	010-3105-62	1k ohm/100MHz	L241	010-3105-62	1k ohm/100MHz
L242	010-3105-62	1k ohm/100MHz	L242	010-3105-62	1k ohm/100MHz
L278	010-3104-54	600 ohm/100MHz	L278	010-3104-54	600 ohm/100MHz
L285	010-3104-54	600 ohm/100MHz	L285	010-3104-54	600 ohm/100MHz
L301	010-3104-54	600 ohm/100MHz	L301	010-3104-54	600 ohm/100MHz
L302	010-3104-54	600 ohm/100MHz	L302	010-3104-54	600 ohm/100MHz
L303	010-3104-54	600 ohm/100MHz	L303	010-3104-54	600 ohm/100MHz
L402	010-3406-54	2.2uH J	L402	010-3406-54	2.2uH J
L501	010-3100-68	3.3uH J	L501	010-3100-68	3.3uH J
L502	010-3104-54	600 ohm/100MHz	L502	010-3104-54	600 ohm/100MHz
L601	010-3108-53	330 ohm/100MHz	L601	010-3108-53	330 ohm/100MHz
L603	010-3057-92	47uH 620mA	L603	010-3057-92	47uH 620mA
L701	010-3104-53	220 ohm/100MHz	L701	010-3104-53	220 ohm/100MHz
L702	010-3104-53	220 ohm/100MHz	L702	010-3104-53	220 ohm/100MHz
L801	010-3105-62	1k ohm/100MHz	L801	010-3105-62	1k ohm/100MHz
L802	010-3105-62	1k ohm/100MHz	L802	010-3105-62	1k ohm/100MHz

PF-3629A-A (MID-USA)			PF-3630A-A (LOW-USA) PF-3627A-A (LOW-CAN)		
REF NO.	PART NO.	DESCRIPTION	REF NO.	PART NO.	DESCRIPTION
L805	010-8026-00	210uH	L805	010-8026-00	210uH
L806	010-3105-62	1k ohm/100MHz	L806	010-3105-62	1k ohm/100MHz
NF701	060-3115-52	CKD310JB1C474ST	NF701	060-3115-52	CKD310JB1C474ST
NF702	060-3115-52	CKD310JB1C474ST	NF702	060-3115-52	CKD310JB1C474ST
P401	076-0478-59	9P	P401	076-0478-59	9P
P706	074-2264-70	J 501951-2019	P706	074-2264-70	J 501951-2019
Q401	192-4116-51	25C4116 G.L	Q401	192-4116-51	25C4116 G.L
Q402	192-4116-51	25C4116 G.L	Q402	192-4116-51	25C4116 G.L
Q403	125-2041-92	RT1N141M	Q403	125-2041-92	RT1N141M
Q404	190-1576-00	2SA1576A	Q404	190-1576-00	2SA1576A
Q501	125-0021-91				

EXPLODED VIEW / PARTS LIST



Grease
 A - E352
 B - F18C
 C - CLS-PD4 R D

NO.	PART NO.	DESCRIPTION	QTY	NO.	PART NO.	DESCRIPTION	QTY
1	969-0080-30	PICKUP-ASSY	1	39	621-1869-21	RACK	1
2	-----	MAIN-PWB-ASSY(5220AH-97)(929522080)	1	40	621-1870-21	STOPPER LINK	1
	-----	MAIN-PWB-ASSY(5220BH-97)(929522081)	1	41	621-1871-22	DISC STOPPER	1
3	-----	SENSOR-PWB-ASSY(6100BH-95)	1	42	621-1872-21	CLAMPER RING	1
4	-----	DC-MOTOR(PWR)(154000-020)	1	43	621-1873-21	LS-RACK	1
5	-----	DC-MOTOR(SPN)(154100-020)	1	44	621-1726-21	ROLLER SLEEVE	2
6	620-1910-21	LOWER CHASSIS	1	45	622-1885-20	ROLLER SHAFT	1
7	620-1911-20	DRIVE PLATE	1	46	622-1886-20	DAMPER PIN	3
8	620-1912-21	ID-LOCK PLATE	1	47	624-3062-20	LEAD SCREW	1
9	620-1913-20	SPRING PLATE	1	48	629-0138-21	DAMPER F	2
10	620-1914-21	CLAMPER ARM	1	49	629-0139-21	DAMPER R	1
11	620-1915-22	CLAMPER PLATE	1	50	714-2003-8B	MACHIN SCREW	2
12	620-1916-22	SENSOR ARM	1	51	716-3718-00	SPECIAL SCREW	2
13	620-1928-20	UPPER CHASSIS	1	52	716-3719-00	SPECIAL SCREW	4
14	620-1918-21	LS-RACK PLATE	1	53	716-3720-00	SPECIAL SCREW	2
15	621-1877-20	UPPER GUIDE	1	54	716-3721-00	SPECIAL SCREW	1
16	621-1846-22	ROLLER GUIDE	1	55	716-3722-00	SPECIAL SCREW	1
17	621-1847-20	LOCK ARM L	1	56	716-3723-02	SPECIAL-SCREW	1
18	621-1848-22	LOCK ARM R	1	57	716-3724-00	SPECIAL SCREW	1
19	621-1849-20	LOADING ROLLER	2	58	750-7924-22	ROLLER SPRING L	1
20	621-1850-22	GEAR BOX	1	59	750-7925-21	ROLLER SPRING R	1
21	-----	MOTOR GEAR(185121-621)	1	60	750-7926-20	DR-SPRING F	2
22	621-1852-20	SECOND GEAR	1	61	750-7927-20	DR-SPRING C	1
23	621-1853-20	ROLLER GEAR A	1	62	750-7928-20	DR-SPRING RA	1
24	621-1888-20	ROLLER GEAR B	1	63	750-7929-20	DR-SPRING RB	1
25	621-1855-20	ROLLER GEAR C	1	64	750-7930-20	SHIFT SPRING	1
26	621-1856-20	ROLLER GEAR D	1	65	750-7931-20	RACK SPRING	1
27	621-1857-21	ROLLER GEAR E	1	66	750-7932-20	CLAMPER SPRING	1
28	621-1858-20	POWER GEAR A	1	67	750-7933-20	ID-LOCK SPRING	1
29	621-1859-20	POWER GEAR B	1	68	750-7934-20	SENSOR SPRING	1
30	621-1860-21	IDLE CASE	1	69	803-4906-60	VINYL-COAT-WIRE	1
31	621-1861-20	IDLE GEAR A	1	70	816-2590-00	SPECIAL LEAD	1
32	621-1862-20	IDLE GEAR B	1	71	816-2591-00	SPECIAL LEAD	1
33	-----	TURN TABLE(186320-621)	1	72	816-2592-00	SPECIAL LEAD	1
34	621-1864-20	THREAD GEAR A	1	73	816-2593-00	SPECIAL LEAD	1
35	621-1865-20	THREAD GEAR B	1	74	816-4070-50	FLAT WIRE	1
36	621-1866-20	LS-HOLDER A	1	75	HBS-668-100	POWER-MOTOR-ASSY	1
37	621-1867-20	LS-HOLDER B	1	76	HBS-669-100	SPINDLE-MOOR-ASSY	1
38	621-1878-20	SHIFT LEVER	1				

ELECTRICAL PARTS LIST

SENSOR PWB(B1) section

REF NO.	PART NO.	DESCRIPTION	REF NO.	PART NO.	DESCRIPTION	REF NO.	PART NO.	DESCRIPTION
D1	001-7138-91	SML-S13RT T86	Q1	060-4025-90	SML-H10TBT86	PWB	039-3732-20	PWB(WITHOUT COMPONENTS)
D2	001-7138-91	SML-S13RT T86	Q2	060-4025-90	SML-H10TBT86			
J1	074-2504-10	OUTLET SOCKET	S2	013-7414-50	SPVG220100			

MAIN PWB(B2) section

REF NO.	PART NO.	DESCRIPTION	REF NO.	PART NO.	DESCRIPTION	REF NO.	PART NO.	DESCRIPTION
C4	168-1052-78	16V 1uF K	IC3	052-5079-20	TMPM321F10FG-7KP8	R53	033-1011-15	1/16W 100 ohm J
C5	046-1042-78	0.1uF K B				R54	033-1011-15	1/16W 100 ohm J
C6	168-1052-78	16V 1uF K	IC5	051-6934-90	MF1341S2313	R55	033-1011-15	1/16W 100 ohm J
C7	042-0560-85	6.3V 100uF	IC7	051-3392-90	S-1323B15NB-N8ATFG	R56	033-0000-05	1/16W 0 ohm
C10	168-1052-78	16V 1uF K				R57	033-1011-15	1/16W 100 ohm J
C11	046-1042-78	0.1uF K B	IC8	051-5417-90	S-1009N271M5T1	R58	033-1011-15	1/16W 100 ohm J
C12	165-1073-35	16V 100uF	IC9	051-3392-90	S-1323B15NB-N8ATFG	R59	033-1011-15	1/16W 100 ohm J
C13	046-1042-78	0.1uF K B				R60	033-1041-15	1/16W 100k ohm J
C15	046-1042-78	0.1uF K B	J1	074-2215-65	15P	R64	033-1041-15	1/16W 100k ohm J
C16	046-4722-58	4700pF K B	J2	074-2504-10	OUTLET SOCKET	R65	033-1041-15	1/16W 100k ohm J
C17	046-1042-78	0.1uF K B	J3	074-2248-50	50P	R66	033-1041-15	1/16W 100k ohm J
C18	046-2222-58	2200pF K B	J4	074-2262-60	10P	R67	033-1041-15	1/16W 100k ohm J
C20	046-1042-78	0.1uF K B	L1	010-3127-90	33 ohm/100MHz	R68	033-4721-15	1/16W 4.7k ohm J
C21	043-0552-90	6.3V 47uF M	L2	010-3127-90	33 ohm/100MHz	R69	033-1031-15	1/16W 10k ohm J
C22	046-1042-78	0.1uF K B	LF1	010-3608-90	90 ohm/100MHz	R70	033-4721-15	1/16W 4.7k ohm J
C23	046-1522-58	1500pF K B	Q1	190-1365-50	2SA1365 AF,AG	R71	033-1031-15	1/16W 10k ohm J
C24	046-1042-78	0.1uF K B	Q2	125-2027-92	DTC124EUA	R72	033-1021-15	1/16W 1k ohm J
C25	046-1532-78	0.015uF K B	Q3	191-1197-50	2SB1197K Q,R	R73	033-1031-15	1/16W 10k ohm J
C27	046-1032-78	0.01uF K B	Q4	125-2027-92	DTC124EUA	R74	033-1041-15	1/16W 100k ohm J
C28	046-1042-78	0.1uF K B	Q5	125-0021-92	DTA124EUA	R75	033-5611-15	1/16W 560 ohm J
C29	046-3332-78	0.033uF K B	R1	033-2211-15	1/16W 220 ohm J	R77	033-1031-15	1/16W 10k ohm J
C30	046-4712-58	470pF K B	R2	033-0000-05	1/16W 0 ohm	R78	033-1041-15	1/16W 100k ohm J
C31	045-4701-50	47pF CH	R3	033-0000-05	1/16W 0 ohm	R79	033-2221-15	1/16W 2.2k ohm J
C32	168-1532-55	0.015uF K	R4	117-1821-15	1/8W 1.8k ohm	R80	032-0163-96	1/2W 27 ohm J (for 929-5220-80)
C33	046-4732-78	0.047uF K B	R5	033-0000-05	1/16W 0 ohm			
C34	046-3322-58	3300pF K B	R6	033-0000-05	1/16W 0 ohm			
C35	046-4732-78	0.047uF K B	R7	033-1831-15	1/16W 18k ohm J			
C36	046-4712-58	470pF K B	R8	033-1231-15	1/16W 12k ohm J	R81	032-0163-96	1/2W 27 ohm J (for 929-5220-81)
C37	046-1042-78	0.1uF K B	R9	116-1001-15	1/4W 10 ohm			
C38	046-1042-78	0.1uF K B	R10	033-2731-15	1/16W 27k ohm J			
C39	046-1042-78	0.1uF K B	R11	033-1541-15	1/16W 150k ohm J			
C40	046-1032-78	0.01uF K B	R12	033-1031-15	1/16W 10k ohm J	R82	033-1531-15	1/16W 15k ohm J
C41	046-1042-78	0.1uF K B	R13	033-2211-15	1/16W 220 ohm J	R83	033-1531-15	1/16W 15k ohm J
C42	045-1007-50	10 +/-0.5pF CH	R14	033-2231-15	1/16W 22k ohm J	R84	033-3301-15	1/16W 33 ohm J
C43	046-1042-78	0.1uF K B	R15	033-4731-15	1/16W 47k ohm J	R87	033-0000-05	1/16W 0 ohm
C44	046-1042-78	0.1uF K B	R16	033-3341-15	1/16W 330k ohm J	R88	033-0000-05	1/16W 0 ohm
C45	043-0570-90	16V 2.2uF K	R17	033-0000-05	1/16W 0 ohm	R89	033-0000-05	1/16W 0 ohm
C46	043-0570-90	16V 2.2uF K	R18	033-4731-15	1/16W 47k ohm J	R90	033-0000-05	1/16W 0 ohm
C47	045-1201-50	12pFJ CH	R19	033-4731-15	1/16W 47k ohm J	R91	033-1031-15	1/16W 10k ohm J
C48	045-1201-50	12pFJ CH	R20	033-3301-15	1/16W 33 ohm J	R92	033-1041-15	1/16W 100k ohm J
C49	046-1042-78	0.1uF K B	R21	033-1011-15	1/16W 100 ohm J	R93	033-1041-15	1/16W 100k ohm J
C50	046-1042-78	0.1uF K B	R22	033-1011-15	1/16W 100 ohm J	R94	033-1041-15	1/16W 100k ohm J
C51	046-1042-78	0.1uF K B	R23	033-4731-15	1/16W 47k ohm J	RN1	050-0140-52	1/32W 100 ohm x4J
C52	046-1042-78	0.1uF K B	R24	033-1041-15	1/16W 100k ohm J	RN10	050-0140-63	1/32W 47k ohm x4J
C53	046-1042-78	0.1uF K B	R25	033-1051-15	1/16W 1M ohm J	RN11	050-0140-51	1/32W 22 ohm x4J
C54	046-1042-78	0.1uF K B	R26	033-2221-15	1/16W 2.2k ohm J	RN12	050-0140-51	1/32W 10k ohm x4J
C55	045-8097-50	8 +/-0.5pF CH	R27	033-4731-15	1/16W 47k ohm J	RN13	050-0140-57	1/32W 10k ohm x4J
C56	046-1042-78	0.1uF K B	R28	033-2211-15	1/16W 220 ohm J	RN14	050-0140-64	1/32W 100k ohm x4J
C57	046-1042-78	0.1uF K B	R29	033-2211-15	1/16W 220 ohm J			
C58	045-8097-50	8 +/-0.5pF CH	R30	033-2211-15	1/16W 220 ohm J	RN15	050-0140-59	1/32W 33 ohm x4J
C59	046-1042-78	0.1uF K B	R31	033-4721-15	1/16W 4.7k ohm J	RN16	050-0140-59	1/32W 33 ohm x4J
C60	046-1042-78	0.1uF K B	R32	033-4721-15	1/16W 4.7k ohm J	RN17	050-0140-67	1/32W 220 ohm x4J
C61	168-1052-78	16V 1uF K	R34	033-4731-15	1/16W 47k ohm J	RN2	050-0140-67	1/32W 220 ohm x4J
C62	042-0560-85	6.3V 100uF	R35	033-4731-15	1/16W 47k ohm J	RN3	050-0140-57	1/32W 10k ohm x4J
C66	168-1052-78	16V 1uF K	R36	033-1031-15	1/16W 10k ohm J	RN4	050-0140-52	1/32W 100 ohm x4J
C67	046-1042-78	0.1uF K B	R37	033-1041-15	1/16W 100k ohm J	RN5	050-0140-57	1/32W 10k ohm x4J
C68	043-0552-90	6.3V 47uF M	R39	033-1031-15	1/16W 10k ohm J	RN6	050-0140-57	1/32W 10k ohm x4J
C71	046-1042-78	0.1uF K B	R40	033-1031-15	1/16W 10k ohm J	RN7	050-0140-60	1/32W 33k ohm x4J
C72	046-1042-78	0.1uF K B	R41	033-1011-15	1/16W 100 ohm J	RN8	050-0140-57	1/32W 10k ohm x4J
C73	168-1042-78	16V 0.1uF K	R42	033-1041-15	1/16W 100k ohm J	RN9	050-0140-57	1/32W 10k ohm x4J
C74	043-0552-90	6.3V 47uF M	R43	033-4731-15	1/16W 47k ohm J	X1	061-3586-90	DSX321G(F) 16.920MHz
C75	046-6822-58	6800pF K B	R44	033-4731-15	1/16W 47k ohm J			
C76	168-1042-78	16V 0.1uF K	R45	033-4731-15	1/16W 47k ohm J	X2	061-3580-90	12MHz
C77	046-1022-58	50V 1000pF	R46	033-1041-15	1/16W 100k ohm J	ZD2	060-8107-50	SURGE
C78	043-0552-90	6.3V 47uF M	R47	033-1041-15	1/16W 100k ohm J			
C79	043-0552-90	6.3V 47uF M	R48	033-0000-05	1/16W 0 ohm			
D1	001-0367-91	1SS226	R49	033-1031-15	1/16W 10k ohm J	ZD3	060-8107-50	SURGE PROTECTOR
ET1	073-0792-90	TERMINAL	R50	033-2201-15	1/16W 22 ohm J			
IC1	051-6101-90	BD8226FV	R51	033-2201-15	1/16W 22 ohm J	PWB	039-4025-00	PWB(WITHOUT COMPONENTS)
IC2	051-6751-00	TC94A93MFG-201	R52	033-2201-15	1/16W 22 ohm J			