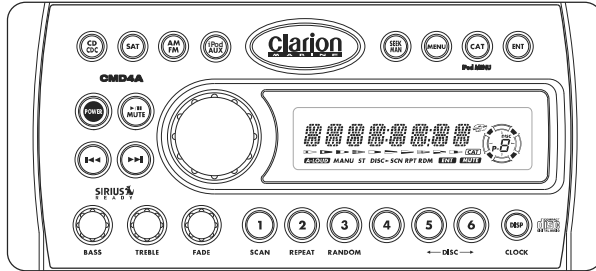


Service Manual

CeNET



Watertight Marine
 AM/FM/CD Multimedia Controller

Model **CMD4A**

(PE-2686B-C)
 (After Serial No.0070251)

ORIGINAL SERVICE MANUAL

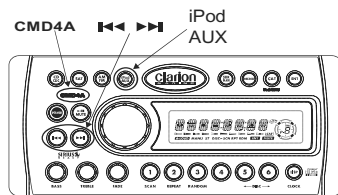
This additional service manual is designed to be used together with Model PE-2686B-A/CMD4

This manual has described only the difference point with the original service manual.

Original model	Manual No.
PE-2686B-A	298-6234-00

DIFFERENCE FROM ORIGINAL MANUAL

- 1.Addition for ipod(CeNET)
- 2.COMPONENTS
- 3.EXPLANATION OF IC
- 4.EXPLODED VIEW/PARTS LIST



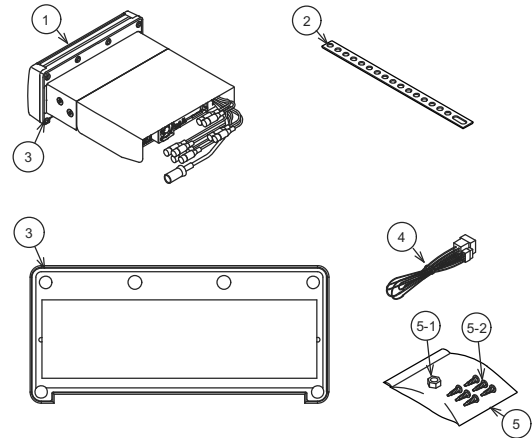
NOTES

- * Use only compact discs bearing the mark. Do not play heart-shaped, octagonal, or other specially shaped compact discs. Some CDs recorded in CD-R/CD-RW mode may not be usable.
- * We cannot supply PWB with component parts in principle. When a circuit on PWB has failure, please repair it by component parts base. Parts which are not mentioned in service manual are not supplied.
- * Specifications and design are subject to change without notice for further improvement.
- * iPod® is for legal or rightholder-authorized copying only. Don't steal music. iPod is a trademark of Apple Computer, Inc., registered in the U.S. and other countries.

COMPONENTS

PE-2686B-C

1.	Main unit	-----	1
2.	Strap	300-4976-00	1
3.	Rubber seal	345-5833-00	1
4.	Extension lead	854-6440-50	1
	(15A Fuse	120-0150-00	1)
	(1A Fuse	120-0010-00	1)
5.	Parts bag	-----	1
5-1	Hex nut	723-5000-2A	1
5-2	Tapping screw(M4x30)	778-4030-00	6



Sold separately
 Wired Remote Control Unit: CMRC1, CMRC2.

DIFFERENCE EXPLODED VIEW/PARTS LIST

Main section

(Refer to page 8-9 of the original service manual.)

The following parts are updated together with the original model.

NO.	PART NO.	DESCRIPTION	Q'TY
34	313-1932-01	HEAT SINK	1
36	929-5002-80	CD MECH MODULE	1

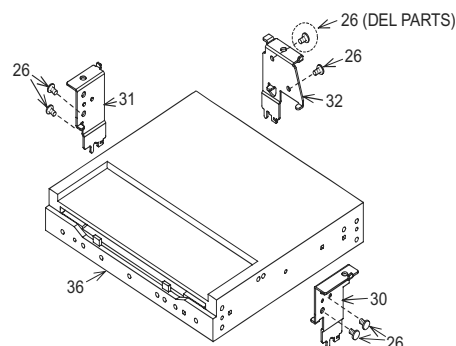
NO.	PART NO.	DESCRIPTION	Q'TY
43	335-7472-01	ES-COVER(L)	1
44	335-7473-01	ES-COVER(R)	1

The following parts are difference parts.

NO.	PART NO.	DESCRIPTION	Q'TY
18	714-3006-8B	MACHINE SCREW(M3x6)	12
25	716-1567-50	REAR BOLT	1
26	714-2603-8B	MACHINE SCREW(M2.6x3)	5
27	714-3004-8A	MACHINE SCREW(M3x4)	6

NO.	PART NO.	DESCRIPTION	Q'TY
28	780-2612-50	SCREW(M2.6x12)	2
29	714-5008-4B	MACHINE SCREW(M5x8)	4
39	276-0094-00	SETPLATE	1

*No.26 MACHINE SCREW(M2.6x3) QTY 6→5



Escutcheon section

(Refer to page 10-11 of the original service manual.)

The following parts are updated together with the original model.

NO.	PART NO.	DESCRIPTION	Q'TY
12	345-5816-01	RUBBER PACKING	1
46	345-5899-00	LAMP CAP	2
50	039-2625-01	FPC	1

NO.	PART NO.	DESCRIPTION	Q'TY
64	346-0193-00	LEATHER SHEET	1
65	371-5827-00	TRIM PLATE	1

The following parts are difference parts.

NO.	PART NO.	DESCRIPTION	Q'TY
1	371-5814-03	FACE PANEL	1
5	382-7352-01	RUBBER KEY	1
6	382-7353-01	BUTTON	1
10	370-6160-02	ESCUTCHEON	1
17	345-5815-00	KNOB RING	1

NO.	PART NO.	DESCRIPTION	Q'TY
22	716-1764-50	PAD SCREW(M1.7x5)	9
34	379-1365-40	LCD(INDICATOR)	1
44	-	-	-
55	370-6161-02	ESCUTCHEON(I)	1
66	716-0872-61	SCREW(M1.7x6)	7

DIFFERENCE ELECTRICAL PARTS LIST

Main PWB section(B1)

(Refer to the original service manual,page 14-15.)

The following parts are difference parts.

REF No.	PART No.	DESCRIPTION	REF No.	PART No.	DESCRIPTION	REF No.	PART No.	DESCRIPTION
*D503	001-0347-23	MA4043M	Q604	125-3007-90	KTA1298	PWB	039-2671-04	PWB(WITHOUT COMPONENT)
*D602	001-0347-32	MA4056M	R635	119-1021-15	1/10W 1.0k ohm			
IC601	052-3397-10	M30622MEP-196GP						

*Error correction parts

SW PWB section(B3)

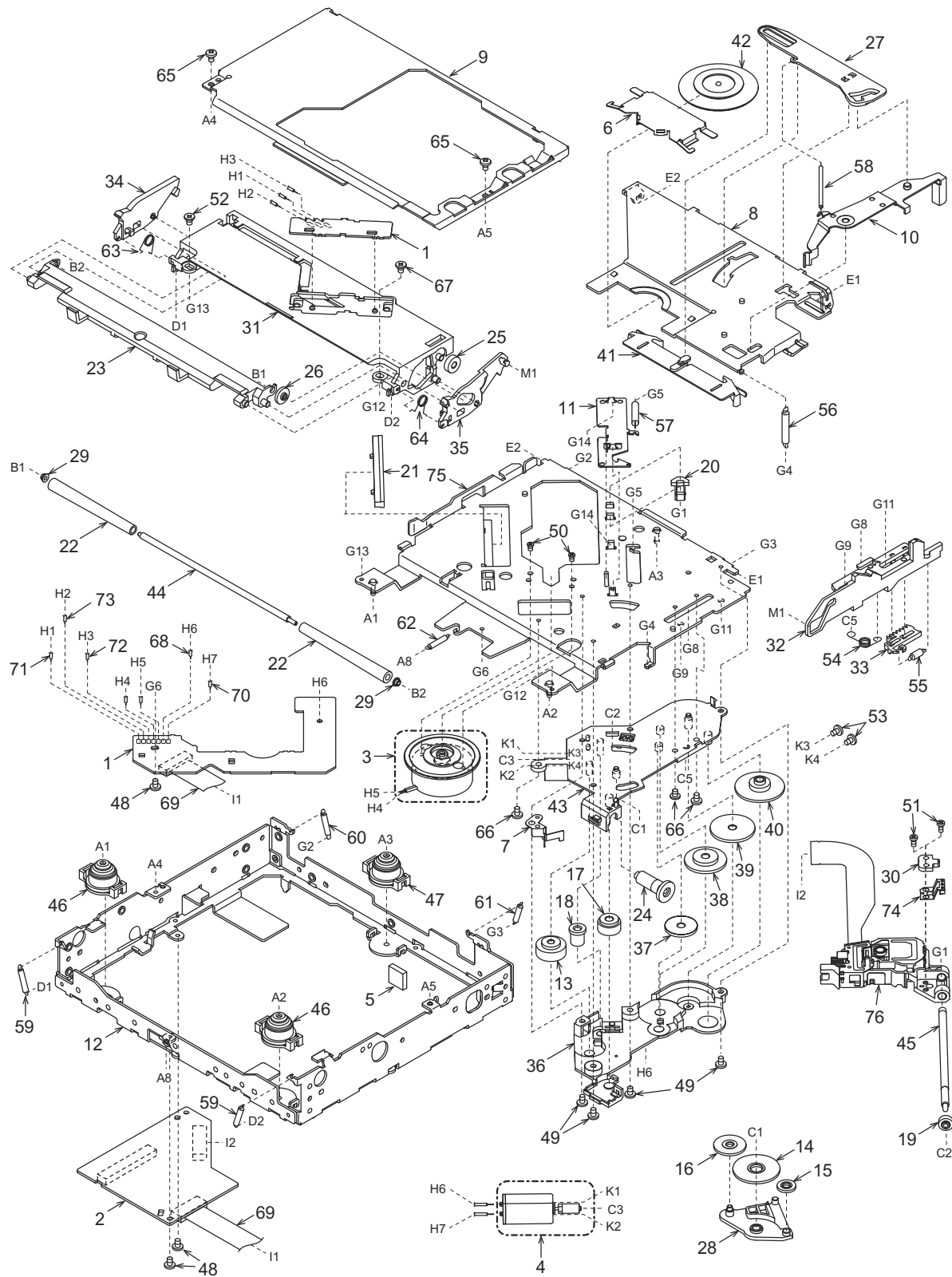
(Refer to the original service manual,page 15.)

The following parts are difference parts.

REF No.	PART No.	DESCRIPTION	REF No.	PART No.	DESCRIPTION	REF No.	PART No.	DESCRIPTION
D720	001-7097-90	CL194S-WM-SD-T	D724	001-7097-90	CL194S-WM-SD-T	R723	119-8211-15	1/10W 820 ohm
D721	001-7097-90	CL194S-WM-SD-T	R720	119-8211-15	1/10W 820 ohm	R724	119-8211-15	1/10W 820 ohm
D722	001-7097-90	CL194S-WM-SD-T	R721	119-8211-15	1/10W 820 ohm	PWB	039-2672-01	PWB(WITHOUT COMPONENT)
D723	001-7097-90	CL194S-WM-SD-T	R722	119-8211-15	1/10W 820 ohm			

EXPLODED VIEW/PARTS LIST

CD mechanism section : 929-5002-80



EXPLODED VIEW/PARTS LIST

CD mechanism section : 929-5002-80

NO.	PART NO.	DESCRIPTION	Q'TY	NO.	PART NO.	DESCRIPTION	Q'TY
1	-----	SENSOR PWB	1	39	621-1750-20	POWER GEAR C	1
2	-----	MAIN PWB	1	40	621-1751-20	POWER GEAR D	1
3	SMA-182-100	SPINDLE MOTOR-ASSY	1	41	621-1752-20	DISC STOPPER	1
4	SMA-183-100	SLED MOTOR-ASSY	1	42	621-1753-20	CLAMPER RING	1
5	345-5476-20	CUSHION RUBBER	1	43	621-1754-20	GEAR BASE	1
6	620-1023-23	CLAMPER PLATE	1	44	622-1571-21	ROLLER SHAFT	1
7	620-1026-21	SPRING PLATE	1	45	624-0020-00	LEAD SCREW	1
8	620-1596-23	CLAMPER LINK	1	46	629-0086-20	DAMPER F	2
9	620-1598-22	UPPER CHASSIS	1	47	629-0087-20	DAMPER R	1
10	620-1752-20	SENSOR ARM	1	48	716-1507-01	SCREW(M2x3)	3
11	620-1753-20	ID-LOCK PLATE	1	49	716-1670-01	SCREW(M2x4)	4
12	620-1754-20	LOWER CHASSIS	1	50	716-1733-01	SCREW(M1.7x2.3)	2
13	621-0608-21	SECOND GEAR	1	51	716-3469-01	SCREW(1.7x4)	2
14	621-0609-20	BASE GEAR	1	52	716-3473-01	SCREW(M2x3)	1
15	621-0610-20	IDLE GEAR A	1	53	716-3551-00	SCREW(M1.4x2.5)	2
16	621-0611-20	IDLE GEAR B	1	54	750-3467-21	SHIFT SPRING	1
17	621-0612-21	ROLLER GEAR A	1	55	750-3468-20	RACK SPRING	1
18	621-0620-20	THREAD GEAR A	1	56	750-3469-20	CLAMPER SPRING	1
19	621-0621-20	THREAD GEAR B	1	57	750-3470-20	ID-LOCK SPRING	1
20	621-0623-23	LS-HOLDER	1	58	750-3471-20	SENSOR SPRING	1
21	621-0624-22	GUIDE RAIL	1	59	750-3472-21	DR-SPRING F	2
22	621-0711-20	LOADING ROLLER	2	60	750-3473-20	DR-SPRING RA	1
23	621-0718-21	ROLLER GUIDE	1	61	750-3474-20	DR-SPRING RB	1
24	621-0719-20	ROLLER GEAR	1	62	750-3475-21	DR-SPRING C	1
25	621-0720-20	ROLLER GEAR C	1	63	750-6797-20	ROLLER SPRING L	1
26	621-0721-20	ROLLER GEAR D	1	64	750-6798-20	ROLLER SPRING R	1
27	621-0728-20	STOPPER LINK	1	65	780-2003-8B	SCREW(M2x3)	2
28	621-1719-20	IDLE CASE	1	66	780-2025-00	SCREW(M2x2.5)	3
29	621-1726-20	ROLLER SLEEVE	2	67	781-1730-00	SCREW(M1.7x3)	1
30	621-1729-20	SH-BASE	1	68	803-4906-60	VINYL-COAT-WIRE(ORG)	1
31	621-1742-20	UPPER GUIDE	1	69	816-2542-01	FLAT WIRE	1
32	621-1743-20	SHIFT LEVER	1	70	816-2590-00	SPECIAL LEAD(GRN)	1
33	621-1744-20	RACK	1	71	816-2591-00	SPECIAL LEAD(YEL)	1
34	621-1745-20	LOCK ARM L	1	72	816-2592-00	SPECIAL LEAD(BLUE)	1
35	621-1746-20	LOCK ARM R	1	73	816-2593-00	SPECIAL LEAD(PUR)	1
36	621-1747-20	GEAR COVER	1	74	966-1722-20	SH-RACK-ASSY	1
37	621-1748-20	POWER GEAR A	1	75	966-1743-21	DRIVE-PLT-ASSY	1
38	621-1749-20	POWER GEAR B	1	76	969-0071-30	PICKUP-ASSY	1