
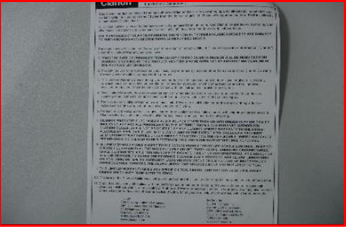







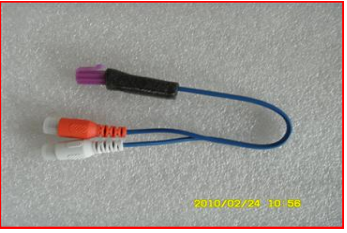






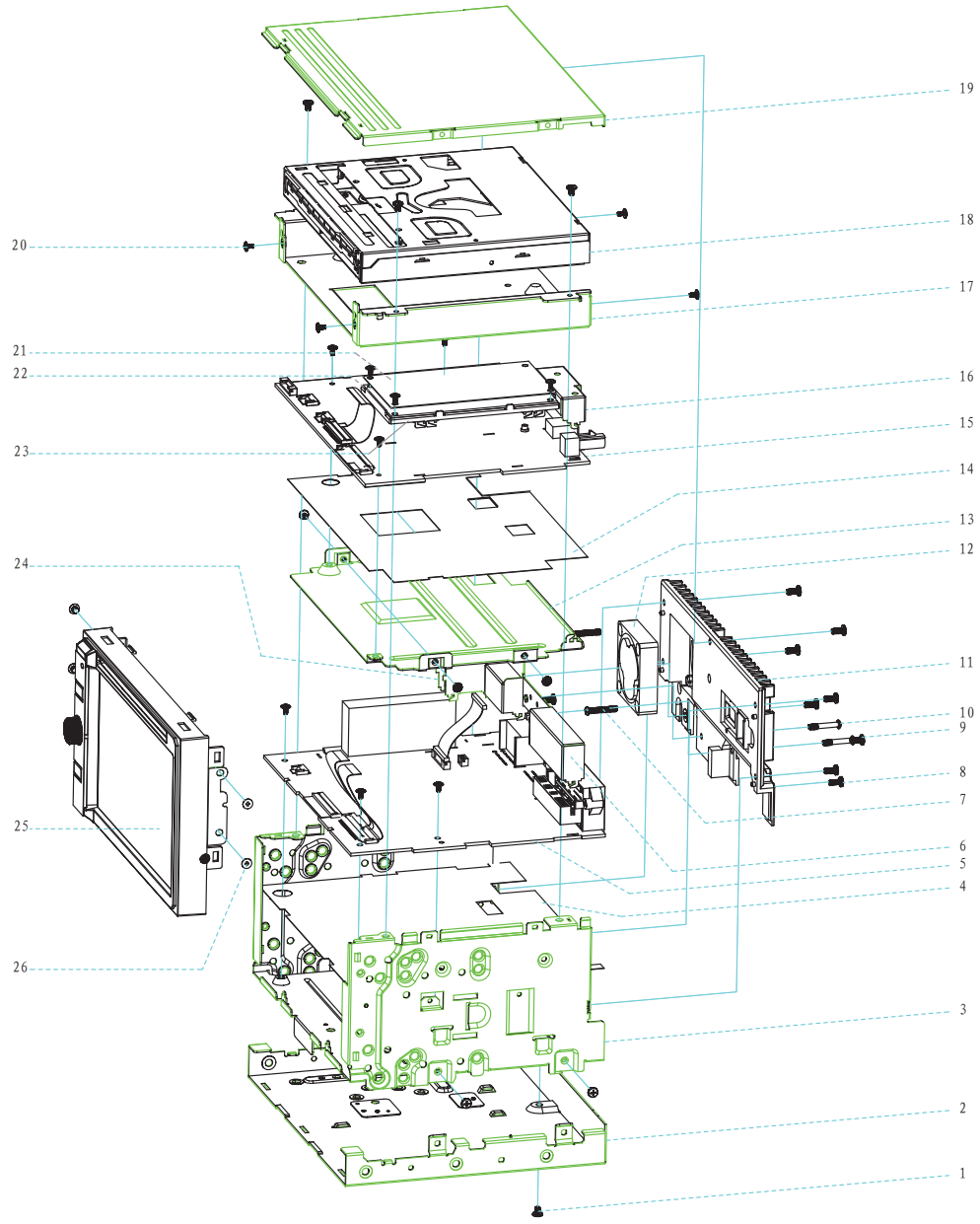
**10 Clarion 2DIN AVN Model(NX500) Accessory List:**

No.	Part Name	QTY	Picture	Part No.	Remark
1	SMK wiring harness	1		3-WZ1X-0010-18-00	
2	Remote Control	1		3-ZREM-1700-27-R2	
3	User Manual	1		7-9820-8505-00-00	
4	Navi Antenna	1		3-Z800-GPS0-08-02	
5	Back Strap	1		1-2651-2023-00-00	
6	4 flush mount bolts 4 cap bolts Rear radio stud and stopper	1		7-2651-8024-00-0A	

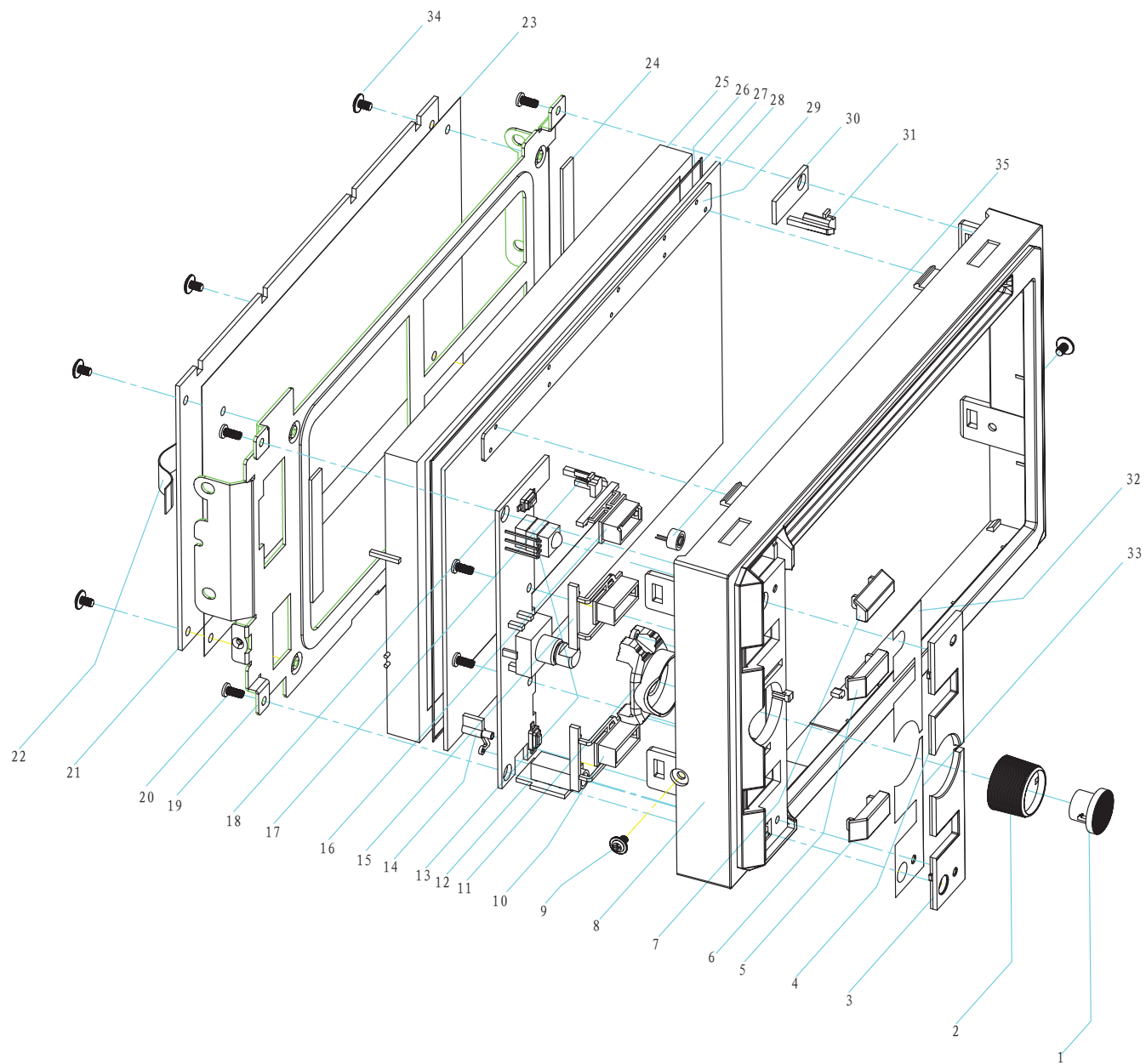
7	Cleaning cloth	1		7-2651-8015-00-00	
8	Warranty Card	1		7-9820-8508-00-00	
9	Trim ring 1--- thin			1-9820-3518-00-01	
10	Trim ring 2--- thick	1		1-9820-3517-00-01	
11	SWRC	1		3-WZ2X-0090-00-00	
12	USB extend cable	1		3-WZ2X-0100-04-01	
13	interface For Sirius	1		3-WZ2X-0087-00-01	

14	3.5 Jack AV IN cable	1		3-WZAH-1800-09-00	
15	Aux in +video in	1		3-WZ2H-0117-06-01	
16	Bluetooth audio cable	1		3-WZ2X-0089-00-00	
17	6CH cables	1		3-WZ2H-0118-10-01	
18	video out cable	1		3-WZ2H-0116-08-01	
19	MIC CABLE	1		3-WZ2X-0156-01-00	
20	interface For HD	1		3-WZ2X-0155-01-00	

■ EXPLODED VIEW



26	1-2701-6013-00-01	螺钉	SCREW	4	M3. 0X2. 5
25	B-9820-1005-00-00	面板组件	PANEL-ASSM	1	
24	B-9820-1001-00-00	收音屏蔽罩	SHIELD-COVER	1	
23	1-9680-2307-01-00	导航板支架	NAVI-PCB-BKT	1	
22	3-B383-0557-R4-00	导航板	NAVI-PCB	1	
21	1-9850-2214-00-00	导热片	GUIDE-HEAT-PLATE	1	
20	1-2651-6009-00-04	螺钉	SCREW	18	M2. 0X3. 8
19	1-9820-2505-00-00	顶盖	TOP-COVER	1	
18	C-5175-000A-00-00	170机芯	CORE	1	
17	1-9820-2502-00-00	机芯支架	CORE-BKT	1	
16	1-9820-2504-00-00	插座支架	SOCKET-BKT	1	
15	3-B345-0562-R5-00	主板	MAIN-PCB	1	
14	1-9820-8022-00-00	绝片	SHEET-PC_4	1	
13	1-9820-2506-00-00	隔板	MIDDLE-BKT	1	
12	3-MF40-J12A-00-00	风扇	FAN	1	
11	1-9820-7501-WX-00	散热片	HEAT-SINK	1	
10	1-2701-6019-00-01	螺钉	SCREW	2	M2. 6X15
9	1-2652-6001-00-00	螺钉	SCREW	2	M2. 6X6, 自攻
8	1-2651-6010-01-01	螺钉	SREW	6	M2. 6X6
7	1-2620-6001-00-00	螺钉	SREW	2	M3X8
6	1-9820-2503-00-00	功放支架	AMP-BKT	1	
5	3-B345-0793-R2-00	功放板	AMP-PCB	1	
4	1-2820-8005-00-00	绝片	SHEET-PC_4	1	
3	1-9820-2507-00-00	主机壳	MAIN-CHASSIS	1	
2	1-2820-2006-00-00	底座支架	BOTTOM-BKT	1	
1	1-2701-6012-00-04	螺钉	SCREW	9	M2. 6X3. 5
No.	Part No.	零件名称	Name	Qty	Remark



35	3-M103-4015-00-00	MIC组件	MIC_ASSM	1	
34	1-2651-6007-00-02	螺钉	SCREW	4	
33	1-9820-8025-00-00	双面胶下	Double-face_glue	1	
32	1-9820-8024-00-00	双面胶上	Double-face_glue	1	
31	1-9820-3507-00-00	左碟口灯	DISK_LIGHT	1	
30	3-B324-0565-R5-00	碟口灯板	SLOT-LED-PCB	1	
29	1-9820-8028-00-00	防尘帘	PROOF-DUST	1	
28	3-P1T0-0867-00-00	触摸屏	TOUCH-SCREEN	1	
27	1-2820-8004-00-00	屏垫片2	SCREEN_CUSHION_2	2	
26	1-2820-8003-00-00	屏垫片1	SCREEN_CUSHION_1	2	
25	3-PTPW-065X-SA-00	显示屏	SCREEN	1	
24	1-2942-8007-00-00	EVA垫片	EVA_CUSHION	2	
23	1-9820-8012-00-00	TFT绝片	Insulation_sheet	1	
22	3-WF0X-0021-20-00	键盘FFC排线	FFC	1	
21	3-B343-0669-R5-00	TFT板	TFT-PCB	1	
20	1-2942-6003-01-00	螺钉	SCREW	5	M2. 0X4. 4
19	1-9820-2501-00-00	TFT支架	TFT-BKT	1	
18	3-B324-0794-R2-00	键板	KEY-PCB	1	
17	1-9820-3516-00-00	右碟口灯	DISK_LIGHT	1	
16	1-9820-3508-00-00	按键臂上	KEY_ARM_UPPER	1	
15	1-9820-3509-00-00	按键臂中	KEY_ARM_MID	1	
14	1-9820-3513-00-00	复位键	RESET-KEY	1	
13	1-2680-8002-00-00	遥控垫片	REMOTE-MAT	2	
12	3-B324-0565-R5-00	AUX_IN板	AUX_IN-PCB	1	
11	1-9820-3506-00-00	导光块	LIGHT_GUIDE	1	
10	1-9820-3510-00-00	按键臂下	KEY_ARM_DOWN	1	
9	1-2651-6009-00-04	螺钉	SCREW	2	M2. 0X3. 8
8	1-9820-3501-00-02	面板	PANEL	1	
7	1-9820-3519-00-01	出碟键	KNOB_EJECT	1	
6	1-9820-3520-00-01	导航键	KNOB_NAV	1	
5	1-9820-3520-00-02	源切换键	KNOB_SOURCE	1	
4	1-9820-3045-00-01	装饰镜片下	DEC_MIRROR_DOWN	1	
3	1-9820-3044-00-01	装饰镜片上	DEC_MIRROR_UPPER	1	
2	1-9820-3505-00-02	旋钮	KNOB	1	
1	1-9820-3514-00-00	旋钮盖	KNOB_COVER	1	
No.	Part No.	零件名称	Name	Qty	Remark

# ■ ELECTRICAL PART LIST

NO.	PART NO.	零件名称	NAME	REFERENCE	QTY
1	3-CC35-0101-30-0S	贴片电容	CHIP CAP	C102 C107 C110 C56 C57	5
2	3-CC35-0102-4X-0S	贴片电容	CHIP CAP	C101 C104 C111 C220 C221 TC207	6
3	3-CC35-0103-4X-0S	贴片电容	CHIP CAP	BC6 BC201 BC202 BC203 BC204 BC205 BC206 BC207 BC208 BC209 BC210 BC211 BC212 BC213 BC214 BC215 BC216 BC217 BC301 BC302 BC303 BC304 BC305 BC306 BC307 C5 C31 C175 C188 C230 C231 C281 C388 C422 C432 C433 TC48 TC205 TC307 TC211	40
4	3-CC35-0104-4X-0S	贴片电容	CHIP CAP	BC1 BC2 BC3 BC4 BC218 C7 C9 C11 C12 C16 C17 C21 C32 C38 C43 C90 C105 C112 C114 C115 C116 C138 C139 C152 C153 C158 C160 C161 C162 C163 C164 C165 C166 C167 C168 C169 C183 C184 C189 C191 C218 C222 C275 C276 C277 C278 C279 C280 C401 C427 C434 C436 C438 C442 C474 C503 C504 C589 C651 TC28 TC49 TC304 TC305 TC27	64
5	3-CC35-0110-30-0S	贴片电容	CHIP CAP	C210 C211 C212 C213	4
6	3-CC35-0150-30-0S	贴片电容	CHIP CAP	C77	1
7	3-CC35-0151-30-0S	贴片电容	CHIP CAP	C13 C206 C207 C208 C209	5
8	3-CC35-0161-30-0S	贴片电容	CHIP CAP	C214 C215 C216 C217	4
9	3-CC35-0220-30-0S	贴片电容	CHIP CAP	BC230 C225 C226 C227 C228 C229	6
10	3-CC35-0223-4X-0S	贴片电容	CHIP CAP	C103	1
11	3-CC35-0270-30-0S	贴片电容	CHIP CAP	C204 C205	2
12	3-CC35-0273-4X-0S	贴片电容	CHIP CAP	C117	1
13	3-CC35-0330-30-0S	贴片电容	CHIP CAP	C23 C24 TC219	3
14	3-CC35-0471-30-0S	贴片电容	CHIP CAP	C87 C89 C223 C224	4
15	3-CC38-0105-4X-0S	贴片电容	CHIP CAP	C1 C14 C37 C44 C61 C92 C159 C197 C435 C7421 C7422 C7423 C7424 C7425 C7426	15
16	3-CC43-0106-6Y-0S	贴片电容	CHIP CAP	C18 C652 C4 C15 C437 C439 C441 C7427	8
17	3-CC52-0226-44-0S	贴片电容	CHIP CAP	BC5 C25 C182 C198 C199	5
18	3-CC57-04U7-5X-0S	贴片瓷片电容	Chip-Cap	C185 C186	2
19	3-CE32-0107-52-MS	贴片铝电解	SMDE-CAP	C174 TC31 TC43 TC87 TC204 TC206 TC208 TC210 TC306	9
20	3-CES2-0108-52-RS	贴片铝电解	SMT-E-CAP	TC26	1
21	3-CES2-0227-52-0S	贴片铝电解	SMT E-CAP	TC8 TC29 TC6 TC9 TC11 TC12 TC13 TC14 TC33 TC38 TC47 TC76 TC102 TC201	14
22	3-CES5-0107-52-0S	贴片铝电解	SMT E-CAP	TC5 TC2 TC4	3
23	3-CES5-0108-52-0N	铝电解电容	E-CAP	TC24	1
24	3-CES5-0476-52-0S	贴片铝电解	SMT E-CAP	TC99 TC100 TC101	3
25	3-Z800-0LEA-5S-00	GPS模块	GPS MODEL	IC22	1
26	3-CTB2-0476-54-0S	贴片钽电容	CHIP TAN CAP	C113 TC1 TC15 TC71 TC22 TC555 TC556	7

NO.	PART NO.	零件名称	NAME	REFERENCE	QTY
27	3-CTB5-0106-54-0S	贴片钽电容	CHIP TAN CAP	TC23	1
28	3-CTC2-0107-54-0S	贴片钽电容	CHIP TAN CAP	TC10	1
29	3-DKA0-4148-00-0S	开关二极管	SW DIODE	D7 D10 D11 D31 D32 D33 D38 D39 D40	9
30	3-DRB0-4001-00-0S	整流管	REC DIODE	D46	1
31	3-DRB0-4004-00-0S	整流管	REC DIODE	D1 D2	2
32	3-DRX0-SK34-00-0S	肖特基管	SOCK. DIODE	D9	1
33	3-DZA3-0012-00-0S	稳压管	ZENER	ZD40	1
34	3-J102-0125-07-30	插座	SOCKET	CON2	1
35	3-J115-0125-07-30	插座	SOCKET	CON1	1
36	3-J180-00R8-08-20	板对板插座(母座)	SOCKET	CON10	1
37	3-J330-SMBA-08-10	FAKRA板端连接器	FAKRA-COUECTOR	ANT2	1
38	3-JF32-00R5-02-31	插座	SOCKET	CON6 CON7	2
39	3-JF52-00R5-02-30	FFC插座	FFC CON.	J403	1
40	3-JU04-F090-07-10	USB插座		0 CON16	1
41	3-L25X-0100-K0-0S	贴片电感	CHIP INDUCTANCE	L51	1
42	3-L25X-01L1-K0-0S	贴片电感	CHIP INDUCTANCE	L201 L202 L203 L204	4
43	3-L4S0-0101-CD-43	贴片功率电感	POWER INDUCTANCE	L1	1
44	3-L4S0-0101-CD-54	贴片功率电感	POWER INDUCTANCE	L10	1
45	3-L4S0-0150-H1-29	贴片功率电感	CHIP INDUCTANCE	L8	1
46	3-L7XX-1420-EE-0S	共模抑制线圈	CMRR COIL	ACCOM1	1
47	3-L8SX-0100-K0-0S	贴片线绕电感	WIRE WIND IND.	L5 L7403	2
48	3-L8SX-0101-K0-0S	贴片线绕电感	WIRE WIND IND.	L3 L11 L18	3
49	3-L8SX-0470-K0-0S	贴片线绕电感	WIRE WIND IND.	L30 L31	2
50	3-L27X-0470-K0-0S	贴片电感	CHIP INDUCTANCE	FB212	1
51	3-LA30-182R-00-1S	贴片磁珠	CHIP BEAD	FB217	1
52	3-LA30-222R-00-1S	贴片磁珠	CHIP BEAD	FB206 FB207 FB208 FB209	4
53	3-LA30-252R-00-1S	贴片磁珠	CHIP BEAD	FB210 FB211 FB213 FB214	4
54	3-LA30-601R-G0-0S	贴片磁珠	CHIP BEAD	FB1 FB13 FB14 FB22 FB23 FB26 FB32 FB38 FB50 FB65 FB68 FB73 FB83 FB94 FB95 FB96 FB97 FB98 FB99 FB110 FB111 FB112 FB113 FB124 FB128 FB129 FB130 FB138 FB143 FB147 FB148 FB151 FB168 FB169 FB192 FB193 FB226 FB227 FB228 FB236 FB238 FB2 FB27 FB177 FB178 FB179 FB180	47
55	3-LA5X-026R-00-1S	贴片磁珠	CHIP BEAD	FB216 FB314	2
56	3-LA5X-601R-G0-0S	贴片磁珠	CHIP BEAD	FB85	1
57	3-LA6X-060R-00-0S	贴片磁珠	CHIP BEAD	CNH1 FB42 FB43 FB45 FB4 FB10 FB181 FB215 FB218 FB182	10
58	3-Q0BT-2907-0P-6S	三极管	IRAN	Q555 Q556	2
59	3-Q0KR-C402-0N-6S	三极管	TRAN	Q5 Q14 Q61 Q62	4

NO.	PART NO.	零件名称	NAME	REFERENCE	QTY
60	3-QKTD-1624-0N-6S	三极管	TRAN	Q60	1
61	3-QMBT-3904-0N-6S	三极管	TRAN	Q1 Q2 Q3 Q6 Q7 Q8 Q10 Q11 Q13 Q15 Q42 Q201 Q202	13
62	3-QMBT-3906-0P-6S	三极管	TRAN	Q4 Q70 Q71	3
63	3-RS31-0000-J0-0S	贴片电阻	CHIP RES	R11 R12 R19 R21 R35 R36 R41 R42 R50 R57 R64 R87 R99 R109 R110 R111 R112 R113 R114 R135 R138 R160 R162 R163 R236 R239 R283 R284 R298 R309 R334 R335 R363 R370 R372 R374 R508 R509 R559 R561 R578	41
64	3-RS31-001K-J0-0S	贴片电阻	CHIP RES	R5 R14 R18 R121 R122 R123 R134 R201 R353 R414 R415 R416 R462 R463 R464 R465 R466 R467 R539 R580	20
65	3-RS31-002K-J0-0S	贴片电阻	CHIP RES	R207 R208	2
66	3-RS31-010K-F0-0S	贴片电阻	CHIP RES	R76 R84	2
67	3-RS31-010K-J0-0S	贴片电阻	CHIP RES	R15 R108 R157 R158 R159 R172 R173 R210 R212 R213 R293 R311 R312 R316 R319 R577 R794 R988	18
68	3-RS31-010R-J0-0S	贴片电阻	CHIP RES	R142 R354	2
69	3-RS31-011K-J0-0S	贴片电阻	CHIP RES	R74 R75 R89	3
70	3-RS31-012K-J0-0S	贴片电阻	CHIP RES	R171	1
71	3-RS31-015K-J0-0S	贴片电阻	CHIP RES	BC9 BC10	2
72	3-RS31-020K-J0-0S	贴片电阻	CHIP RES	R7434 R7435 R7436	3
73	3-RS31-022K-J0-0S	贴片电阻	CHIP RES	R92	1
74	3-RS31-022R-J0-0S	贴片电阻	CHIP RES	R165 R168	2
75	3-RS31-024K-J0-0S	贴片电阻	CHIP RES	R198	1
76	3-RS31-027K-J0-0S	贴片电阻	CHIP RES	R71 R81	2
77	3-RS31-030K-J0-0S	贴片电阻	CHIP RES	R22	1
78	3-RS31-033K-J0-0S	贴片电阻	CHIP RES	R325	1
79	3-RS31-033R-F0-0S	贴片电阻	CHIP RES	R238	1
80	3-RS31-033R-J0-0S	贴片电阻	CHIP RES	R3 R4 R88 R234 R604	5
81	3-RS31-030K-F0-0S	贴片电阻	CHIP RES	R196	1
82	3-RS31-039K-F0-0S	贴片电阻	CHIP RES	R194	1
83	3-RS31-047K-J0-0S	贴片电阻	CHIP RES	R72 R117 R286 R995	4
84	3-RS31-04K7-J0-0S	贴片电阻	CHIP RES	R1 R6 R7 R8 R31 R33 R39 R45 R48 R51 R52 R53 R118 R125 R203 R204 R305 R538 R543	19
85	3-RS31-04R3-F0-0S	贴片电阻	CHIP RES	R144 R244	2
86	3-RS31-056R-J0-0S	贴片电阻	CHIP RES	R240	1
87	3-RS31-05K6-J0-0S	贴片电阻	CHIP RES	R513 R514 R557	3
88	3-RS31-06K8-J0-0S	贴片电阻	CHIP RES	R106	1
89	3-RS31-075R-F0-0S	贴片电阻	CHIP RES	R2 R214 R218 R219 R220 R221 R222 R223 R224 R225	10
90	3-RS31-091R-J0-0S	贴片电阻	CHIP RES	R247 R248	2

NO.	PART NO.	零件名称	NAME	REFERENCE	QTY
91	3-RS31-100K-F0-0S	贴片电阻	CHIP RES	R195	1
92	3-RS31-100K-J0-0S	贴片电阻	CHIP RES	R13 R91 R116 R164 R191	5
93	3-RS31-100R-J0-0S	贴片电阻	CHIP RES	R9 R10 R20 R736 R739 R869 R870 R987 R7433 D18	10
94	3-RS31-15K4-F0-0S	贴片电阻	CHIP RES	R228	1
95	3-RS31-160K-F0-0S	贴片电阻	CHIP RES	R197	1
96	3-RS31-220K-J0-0S	贴片电阻	CHIP RES	R215	1
97	3-RS31-220R-F0-0S	贴片电阻	CHIP RES	R242 R246	2
98	3-RS31-220R-J0-0S	贴片电阻	CHIP RES	R59 R90	2
99	3-RS31-392R-F0-0S	贴片电阻	CHIP RES	R226	1
100	3-RS31-470R-F0-0S	贴片电阻	CHIP RES	R79 R80	2
101	3-RS31-470R-J0-0S	贴片电阻	CHIP RES	R17 R7430 R7431 R7432	4
102	3-RS52-0000-J0-0S	贴片电阻	CHIP REC	FB315	1
103	3-RS52-001K-J0-0S	贴片电阻	CHIP RES	R43	1
104	3-RS52-001R-J0-0S	贴片电阻	CHIP RES	R77 R78 R82 R83 R85 R86	6
105	3-RS52-010R-J0-0S	贴片电阻	CHIP RES	R558	1
106	3-RS63-0000-J0-0S	贴片电阻	CHIP RES	L2 R520	2
107	3-RS63-04R7-J0-0S	贴片电阻	CHIP RES	R209	1
108	3-RS63-100R-J0-0S	贴片电阻	CHIP RES	R133 R654 R137 R199 R655	5
109	3-CC35-0080-80-0S	贴片电容	CHIP CAP	BC11	1
110	3-DZA3-04V7-00-0S	稳压管	ZENER	ZD1	1
111	3-U00D-5954-00-XS	驱动IC	DRIVER	U6	1
112	3-U00D-6849-00-XS	驱动IC	DRIVER	U7	1
113	3-U0BA-6289-FE-9S	马达驱动IC	IC	U401	1
114	3-U0BA-7603-F0-9S	视频开关	VIDEO SW	U7402	1
115	3-U0BU-9451-KV-XS	IPOD音频处理IC	IPOD AUTHENTICATION	IC17	1
116	3-U0LD-1117-18-XS	稳压IC	Regulator	U19	1
117	3-USE8-1117-33-DS	稳压IC	REG	U16	1
118	3-U0LD-1117-33-XS	稳压IC	REG	U20	1
119	3-U0MP-4461-00-XS	DC/DC 电源IC	DC/DC REG	MPS1	1
120	3-U0RT-9193-15-DS	低功耗电源调整器	LDO	U18	1
121	3-U0WM-8501-00-XS	数模转换器	DAC	U11	1
122	3-U0WM-8522-00-AS	芯片	IC	IC1	1
123	3-U0XC-6401-37-0S	双输出电源IC	DUAL LDO	IC60	1
124	3-U57V-6416-20-RS	静态存储器	SDRAM	U3	1
125	3-UAT2-4C16-00-9S	程序存储器	EEPROM	U2	1
126	3-UFSU-SB30-00-XS	USB2.0开关芯片	USB 2.0 SWITCH	IC2 IC3 IC9	3
127	3-UMFI-2162-00-0S	认证芯片	AUTHENTICATION CHIP	IC48	1