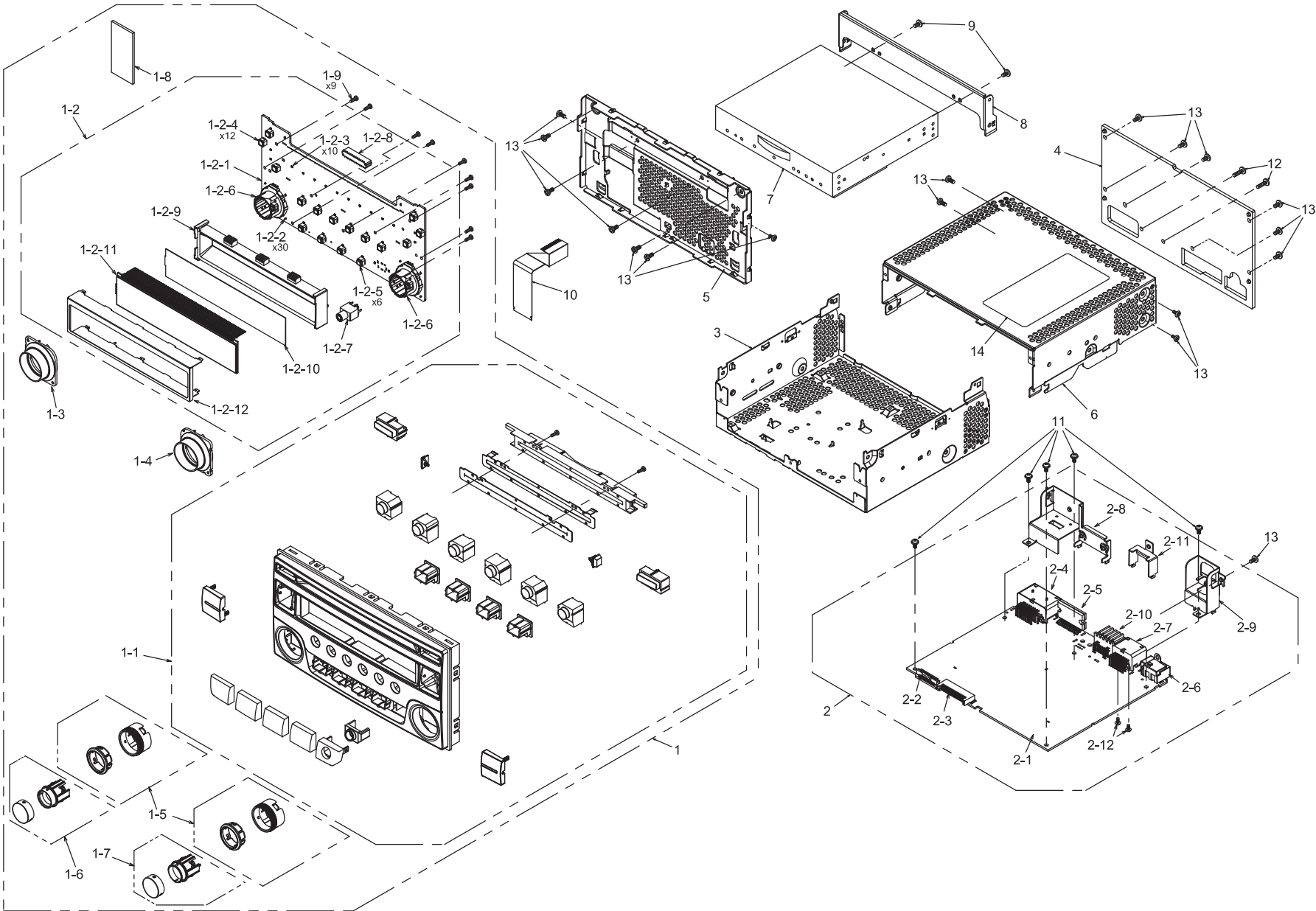


EXPLODED VIEW / PARTS LIST
PP-3442C-A, PP-3442V-A



PP-3442C-A, V-A

NO.	PART NO.	DESCRIPTION	Q'TY
1	-----	PANEL-ASSY (PP3442CA:3442A0-45) (PP3442VA:3442B0-45)	1
1-1	940-8626-00	ESCUTCHEON-ASSY	1
1-2	-----	SW-PWB-ASSY (PP3442CA:3442A7-77) (PP3442VA:3442B7-77)	1
1-2-1	-----	SW PWB (PP3442CA:396200-039) (PP3442VA:410800-039)	1
1-2-2	001-7109-90 001-7093-91	DIODE(PP3442CA) DIODE(PP3442VA)	30
1-2-3	001-7109-90 001-7093-91	DIODE(PP3442CA) DIODE(PP3442VA)	10 12
1-2-4	013-6202-52	TACT SWITCH	12
1-2-5	013-6201-53	SWITCH	6
1-2-6	016-7006-00	ROTARY ENCODER	2
1-2-7	075-0395-01	JACK	1
1-2-8	074-3055-26	OUTLET SOCKET	1
1-2-9	335-9150-00	LCD HOLDER	1
1-2-10	335-9151-00	LCD REFLECTOR	1
1-2-11	379-1455-50 379-1455-52	LCD(PP3442CA) LCD(PP3442VA)	1
1-2-12	331-5137-00	LCD COVER	1
1-3	335-9147-00	ILLUMI RING(L)	1
1-4	335-9148-00	ILLUMI RING(R)	1
1-5	947-0787-02	KNOB-ASSY	2
1-6	947-0788-02	ASSY-PART	1
1-7	947-0789-02	ASSY-PART	1
1-8	345-8090-00	CUSHION RUBBER	1
1-9	716-0778-52	SPECIAL SCREW	9
2	----- -----	MAIN-PWB-ASSY (PP3442CA:3442A7-75) MAIN-PWB-ASSY (PP3442VA:3442B7-75)	1

NO.	PART NO.	DESCRIPTION	Q'TY
2-1	-----	MAIN PWB(379500-039)	1
2-2	074-2260-88	OUTLET SOCKET	1
2-3	076-3011-76	PLUG	1
2-4	074-4009-20	OUTLET SOCKET	1
2-5	051-2067-00	IC	1
2-6	092-2210-01 092-2210-02	ANT-RECEPT(PP3442CA) ANT-RECEPT(PP3442VA)	1
2-7	074-1302-16	OUTLET SOCKET	1
2-8	331-5153-00	SOCKET HOLDER	1
2-9	331-4676-00	ANT-HOLDER	1
2-10	-	(SOCKET) *N/A	-
2-11	-	(HOLDER) *N/A	-
2-12	778-3006-00	TAP-SCREW	2
3	311-1993-00 311-1969-00	LOWER CASE(PP3442CA) LOWER CASE(PP3442VA)	1
4	313-2070-00	HEAT SINK	1
5	309-1943-00	ES PLATE	1
6	310-1916-00 310-1889-00	UPPER CASE(PP3442CA) UPPER CASE(PP3442VA)	1
7	929-5150-80	CD-MECH-MODULE	1
8	331-5138-00	CD BRKT	1
9	714-2603-89	MACHINE SCREW	2
10	816-3064-05	FLAT WIRE	1
11	716-0878-50	SPECIAL SCREW	5
12	735-2614-1B	D-SEMS SCREW	2
13	714-2606-8B	MACHINE SCREW	17
14	276-0153-16 276-1057-02	SETPLATE(PP3442CA) SETPLATE(PP3442VA)	1

ELECTRICAL PARTS LIST

MAIN PWB(B1) section : PP-3442C-A

REF No.	PART No.	DESCRIPTION	REF No.	PART No.	DESCRIPTION	REF No.	PART No.	DESCRIPTION
C101	168-2222-55	2200pF K	C349	046-1042-78	16V 0.1uF	C545	043-0604-90	25V 10uF B
C122	166-1201-50	12pF CH	C350	046-1042-78	16V 0.1uF	C546	046-1022-58	50V 1000pF
C128	045-2201-50	22pFJ CH	C351	046-1042-78	16V 0.1uF	C547	043-7503-90	4.7uF
C129	046-1022-58	50V 1000pF	C352	043-0552-90	6.3V 47uF M	C548	043-6400-90	16V 4.7uF K
C130	046-1022-58	50V 1000pF	C353	043-0559-90	6.3V 22uF	C553	043-0603-90	16V 10uF
C131	045-3901-50	39pFJ CH	C354	168-1052-78	16V 1uF K	C554	043-0603-90	16V 10uF
C132	045-1211-50	120pFJ CH	C355	046-1042-78	16V 0.1uF	C555	046-1042-78	16V 0.1uF
C133	045-4796-50	4.7pFJ CH	C356	046-1042-78	16V 0.1uF	C556	043-0552-90	6.3V 47uF M
C134	045-1501-50	15pFJ CH	C357	046-1042-78	16V 0.1uF	C557	043-6400-90	16V 4.7uF K
C135	045-2211-50	220pFJ CH	C358	045-2201-50	22pFJ CH	C558	043-0570-90	16V 2.2uF K
C136	046-3922-58	3900pF K B	C360	046-1042-78	16V 0.1uF	C559	043-0570-90	16V 2.2uF K
C137	046-1022-58	50V 1000pF	C361	046-1042-78	16V 0.1uF	C562	046-1022-58	50V 1000pF
C138	046-1032-78	16V 0.01uF	C362	046-1042-78	16V 0.1uF	C564	168-4752-98	4.7uF K
C139	046-1032-78	16V 0.01uF	C364	046-1042-78	16V 0.1uF	C565	043-0603-90	16V 10uF
C141	046-3322-58	3300pF K B	C365	045-4711-50	470pFJ CH	C568	046-1022-58	50V 1000pF
C142	046-2232-78	0.022uF K B	C366	046-1022-58	50V 1000pF	C569	043-7503-90	4.7uF
C143	046-1022-58	50V 1000pF	C367	046-1042-78	16V 0.1uF	C570	043-6400-90	16V 4.7uF K
C144	046-2232-78	0.022uF K B	C368	046-3322-58	3300pF K B	C571	043-0604-90	25V 10uF B
C145	046-2232-78	0.022uF K B	C369	046-3322-58	3300pF K B	C572	043-7701-90	2.2uF
C146	046-2232-78	0.022uF K B	C370	042-4033-90	6.3V 220uF	C574	045-4701-50	47pF CH
C147	046-2232-78	0.022uF K B	C371	046-3322-58	3300pF K B	C575	168-4742-78	0.47uF K
C148	043-0562-90	10V 0.22uF	C372	046-3322-58	3300pF K B	C576	168-1042-38	50V 0.1uF K
C149	046-2232-78	0.022uF K B	C373	046-1042-78	16V 0.1uF	C577	046-1522-58	1500pF K B
C150	043-0563-90	16V 47uF	C375	046-3322-58	3300pF K B	C578	045-2201-50	22pFJ CH
C161	043-0604-90	25V 10uF B	C376	046-3322-58	3300pF K B	C579	178-2242-38	0.22uF B
C162	046-1042-78	16V 0.1uF	C377	046-1522-58	1500pF K B	C580	042-4000-90	16V 470uF
C202	046-2222-58	2200pF K B	C378	046-1522-58	1500pF K B	C581	165-4763-35	16V 47uF
C203	046-1042-78	16V 0.1uF	C379	046-1522-58	1500pF K B	D104	001-9013-90	BA891
C204	046-2222-58	2200pF K B	C380	046-1522-58	1500pF K B	D105	001-0580-90	1SS352
C206	165-3363-25	10V 33uF	C381	043-0559-90	6.3V 22uF	D106	001-9013-90	BA891
C214	168-4722-55	4700pF K	C401	046-1042-78	16V 0.1uF	D203	001-0580-90	1SS352
C215	168-4722-55	4700pF K	C402	046-1042-78	16V 0.1uF	D401	001-2630-90	1SS420-TPL3,F
C216	168-3332-78	0.033uF K	C403	166-2201-50	22pF CH	D501	001-2412-90	RR264M-400
C217	168-3332-78	0.033uF K	C404	166-2201-50	22pF CH	D502	001-0580-90	1SS352
C218	168-1042-78	16V 0.1uF K	C405	168-4722-55	4700pF K	D503	001-2412-90	RR264M-400
C219	168-4722-55	4700pF K	C406	168-2242-58	0.22uF K	D504	001-2412-90	RR264M-400
C301	043-0570-90	16V 2.2uF K	C407	168-4752-98	4.7uF K	D505	001-2639-90	RSX201L-30
C302	043-0570-90	16V 2.2uF K	C408	004-1580-14	45pF	D506	001-2628-90	RB160M-40
C303	043-0570-90	16V 2.2uF K	C410	046-1042-78	16V 0.1uF	IC101	-----	TEF7000 (thermal pad type) (402590-051)
C304	043-0570-90	16V 2.2uF K	C411	165-4763-15	6.3V 47uF	IC301	051-3034-90	NJM4558V
C305	045-2201-50	22pFJ CH	C412	045-2701-50	27pFJ CH	IC302	-----	SAF7741HV/N125 (DSP) (thermal pad type) (674700-051)
C306	045-2201-50	22pFJ CH	C413	046-1042-78	16V 0.1uF	IC303	051-7106-90	CD4052B-PWR
C309	046-1042-78	16V 0.1uF	C414	046-1032-78	16V 0.01uF	IC401	-----	S-24C16C1-T8T5U3 (E2P-ROM) (Software should be written on production) (942650-051)
C310	168-1052-78	16V 1uF K	C415	046-1022-58	50V 1000pF	IC402	-----	R5F64176PFB (FLASH-MICOM) (Software should be written on production) (033310-052)
C312	046-1042-78	16V 0.1uF	C416	046-1022-58	50V 1000pF	IC403	051-6647-80	TJA1051T,118
C314	045-2201-50	22pFJ CH	C417	046-1022-58	50V 1000pF	IC404	051-5481-90	S-1009N30I-M5T1U
C315	045-2201-50	22pFJ CH	C418	042-2273-25	10V 220uF M	IC502	051-2067-00	TB2946HQ
C316	046-1042-78	16V 0.1uF	C419	042-2273-25	10V 220uF M	IC504	051-5443-08	BD4850G-TR
C317	046-1042-78	16V 0.1uF	C420	045-1011-50	100pFJ CH	IC505	-----	BD00C0AWFP (thermal pad type) (358290-051)
C318	046-1042-78	16V 0.1uF	C517	168-1542-58	0.15uF K	IC507	051-3034-90	NJM4558V
C319	046-1042-78	16V 0.1uF	C518	168-1542-58	0.15uF K	IC508	051-3579-90	S1112B15MCL6ATF G
C320	043-0570-90	16V 2.2uF K	C519	168-1542-58	0.15uF K	IC509	051-3708-90	S-1112B33MC-L6STF G
C321	043-0570-90	16V 2.2uF K	C520	168-1542-58	0.15uF K	IC511	-----	BD00C0AWFP (thermal pad type) (358290-051)
C322	168-4752-98	4.7uF K	C521	168-1542-58	0.15uF K	IC513	051-3709-90	BD00D0AWHFP-TR
C323	168-4752-98	4.7uF K	C522	168-1542-58	0.15uF K			
C324	046-1042-78	16V 0.1uF	C523	168-1542-58	0.15uF K			
C325	046-1042-78	16V 0.1uF	C524	168-1542-58	0.15uF K			
C326	046-1042-78	16V 0.1uF	C525	168-1052-78	16V 1uF K			
C327	046-1042-78	16V 0.1uF	C526	042-1760-90	16V 10uF M			
C328	046-1042-78	16V 0.1uF	C527	178-2742-78	0.27uF			
C329	045-1007-50	10 +/-0.5pF CH	C528	168-1052-78	16V 1uF K			
C330	045-1007-50	10 +/-0.5pF CH	C530	043-0574-90	25V 1.0uF			
C331	046-1042-78	16V 0.1uF	C532	168-1832-55	0.018uF K			
C333	168-4752-98	4.7uF K	C533	043-5600-90	0.10uF			
C335	046-1042-78	16V 0.1uF	C534	042-1717-00	16V 3300uF			
C336	046-1042-78	16V 0.1uF	C535	168-6822-55	6800pF K			
C337	046-1042-78	16V 0.1uF	C536	168-6822-55	6800pF K			
C338	042-4033-90	6.3V 220uF	C537	168-6822-55	6800pF K			
C339	046-1042-78	16V 0.1uF	C538	168-6822-55	6800pF K			
C340	168-4752-98	4.7uF K	C539	168-6822-55	6800pF K			
C341	045-2201-50	22pFJ CH	C540	168-6822-55	6800pF K			
C342	046-1042-78	16V 0.1uF	C541	168-6822-55	6800pF K			
C345	046-1042-78	16V 0.1uF	C542	168-6822-55	6800pF K			
C347	168-1052-78	16V 1uF K	C543	168-1042-78	16V 0.1uF K			
C348	046-1042-78	16V 0.1uF	C544	168-2232-55	0.022uF K			

REF No.	PART No.	DESCRIPTION	REF No.	PART No.	DESCRIPTION	REF No.	PART No.	DESCRIPTION
IC514	-----	LT3481EDD#TRPBF (SW-REGULATOR) (thermal pad type) (361280-051)	R146	116-1091-15	1/4W 1 ohm	R420	033-3311-15	1/16W 330 ohm J
J201	074-2260-88	38P	R147	116-1221-15	1/4W 1.2k ohm	R421	033-1041-15	1/16W 100k ohm J
J203	074-1302-16	16P	R151	033-1031-15	1/16W 10k ohm J	R422	033-2221-15	1/16W 2.2k ohm J
J501	074-4009-20	20P	R152	033-0000-05	1/16W 0 ohm	R423	033-2221-15	1/16W 2.2k ohm J
L110	010-3062-54	290nH	R156	119-0000-05	1/10W 0 ohm JW	R424	119-1031-15	1/10W 10k ohm
L111	010-3406-56	3.3uH J	R157	033-1051-15	1/16W 1M ohm J	R425	119-1031-15	1/10W 10k ohm
L112	010-3062-56	0.5uH	R158	033-1051-15	1/16W 1M ohm J	R426	119-1031-15	1/10W 10k ohm
L113	010-3062-53	0.215uH	R203	033-1011-15	1/16W 100 ohm J	R427	119-1031-15	1/10W 10k ohm
L114	010-3439-51	1.8uH	R214	119-4731-15	1/10W 47k ohm	R428	033-1031-15	1/16W 10k ohm J
L115	010-2290-52	330uH	R215	032-0140-89	1/10W 47k ohm F	R429	033-1031-15	1/16W 10k ohm J
L116	010-2290-52	330uH	R216	032-0140-89	1/10W 47k ohm F	R430	033-1011-15	1/16W 100 ohm J
L117	010-3104-54	600 ohm/100MHz	R217	119-1531-15	1/10W 15k ohm	R431	033-1011-15	1/16W 100 ohm J
L301	010-3104-54	600 ohm/100MHz	R218	119-3011-15	1/10W 300 ohm	R432	116-6201-15	1/4W 62 ohm
L302	010-3104-54	600 ohm/100MHz	R219	119-1031-15	1/10W 10k ohm	R433	116-6201-15	1/4W 62 ohm
L303	010-3104-54	600 ohm/100MHz	R220	116-6201-15	1/4W 62 ohm	R434	033-0000-05	1/16W 0 ohm
L304	010-3104-54	600 ohm/100MHz	R221	116-6201-15	1/4W 62 ohm	R435	033-4731-15	1/16W 47k ohm J
L305	010-3104-54	600 ohm/100MHz	R225	119-0000-05	1/10W 0 ohm JW	R436	033-4731-15	1/16W 47k ohm J
L306	010-3104-54	600 ohm/100MHz	R226	119-0000-05	1/10W 0 ohm JW	R437	033-1031-15	1/16W 10k ohm J
L307	010-3104-54	600 ohm/100MHz	R301	119-1031-15	1/10W 10k ohm	R440	033-4731-15	1/16W 47k ohm J
L308	010-3104-54	600 ohm/100MHz	R302	119-1031-15	1/10W 10k ohm	R442	033-4791-15	1/16W 4.7 ohm
L309	010-3104-54	600 ohm/100MHz	R303	032-0140-89	1/10W 47k ohm F	R445	033-0000-05	1/16W 0 ohm
L310	010-3104-54	600 ohm/100MHz	R304	032-0140-89	1/10W 47k ohm F	R446	033-4721-15	1/16W 4.7k ohm J
L311	010-3104-54	600 ohm/100MHz	R305	032-0140-89	1/10W 47k ohm F	R447	033-4731-15	1/16W 47k ohm J
L312	010-3104-54	600 ohm/100MHz	R306	032-0140-89	1/10W 47k ohm F	R448	033-1031-15	1/16W 10k ohm J
L313	010-3104-54	600 ohm/100MHz	R307	033-1031-15	1/16W 10k ohm J	R449	033-4731-15	1/16W 47k ohm J
L314	010-3104-54	600 ohm/100MHz	R308	032-0140-89	1/10W 47k ohm F	R450	033-1021-15	1/16W 1k ohm J
L315	010-3104-54	600 ohm/100MHz	R309	032-0140-89	1/10W 47k ohm F	R451	033-1011-15	1/16W 100 ohm J
L316	010-3104-54	600 ohm/100MHz	R310	032-0140-89	1/10W 47k ohm F	R454	033-1011-15	1/16W 100 ohm J
L317	010-3104-54	600 ohm/100MHz	R311	032-0140-89	1/10W 47k ohm F	R456	033-1021-15	1/16W 1k ohm J
L318	010-3104-54	600 ohm/100MHz	R313	033-1031-15	1/16W 10k ohm J	R457	033-4721-15	1/16W 4.7k ohm J
L319	010-3104-54	600 ohm/100MHz	R314	032-0221-53	1/16W 18k ohm F	R458	033-1011-15	1/16W 100 ohm J
L320	010-3105-70	240ohm/100MHz	R315	032-0221-53	1/16W 18k ohm F	R459	033-1011-15	1/16W 100 ohm J
L321	010-3104-54	600 ohm/100MHz	R316	032-0221-53	1/16W 18k ohm F	R460	033-4731-15	1/16W 47k ohm J
L322	010-3104-54	600 ohm/100MHz	R317	032-0221-53	1/16W 18k ohm F	R462	033-6831-15	1/16W 68k ohm J
L323	010-3104-54	600 ohm/100MHz	R318	033-1811-15	1/16W 180 ohm J	R463	033-6831-15	1/16W 68k ohm J
L401	010-3406-54	2.2uH J	R319	033-1811-15	1/16W 180 ohm J	R466	033-2231-15	1/16W 22k ohm J
L502	010-8048-00	240uH	R320	033-1031-15	1/16W 10k ohm J	R467	033-4721-15	1/16W 4.7k ohm J
L507	010-3104-54	600 ohm/100MHz	R321	033-1031-15	1/16W 10k ohm J	R468	033-4721-15	1/16W 4.7k ohm J
L508	010-3414-93	4.7uH	R322	033-1031-15	1/16W 10k ohm J	R475	033-4731-15	1/16W 47k ohm J
P101	092-2210-01	ANT-RECEPT	R323	033-1011-15	1/16W 100 ohm J	R479	033-3321-15	1/16W 3.3k ohm J
P410	076-3011-76	26P	R324	033-1031-15	1/16W 10k ohm J	R480	033-3321-15	1/16W 3.3k ohm J
Q107	190-2060-00	2SA2060	R325	032-0150-50	1/16W 10k ohm F	R481	033-2221-15	1/16W 2.2k ohm J
Q108	125-2046-95	DTC143ZUB	R326	033-1031-15	1/16W 10k ohm J	R488	033-1021-15	1/16W 1k ohm J
Q206	125-2046-91	DTC114EUBTL	R327	032-0150-50	1/16W 10k ohm F	R489	033-1021-15	1/16W 1k ohm J
Q207	125-0021-96	DTA144TU	R329	032-0150-50	1/16W 10k ohm F	R490	033-1021-15	1/16W 1k ohm J
Q301	125-2046-95	DTC143ZUB	R331	032-0150-50	1/16W 10k ohm F	R491	033-1021-15	1/16W 1k ohm J
Q302	125-7021-90	RQ1A060ZPTR	R332	119-2201-15	1/10W 22 ohm	R492	033-0000-05	1/16W 0 ohm
Q505	191-1197-50	2SB1197K Q,R	R334	033-1041-15	1/16W 100k ohm J	R493	033-0000-05	1/16W 0 ohm
Q506	192-4116-00	2SC4116	R335	033-1041-15	1/16W 100k ohm J	R495	033-3321-15	1/16W 3.3k ohm J
Q507	125-2046-91	DTC114EUBTL	R336	032-0150-50	1/16W 10k ohm F	R496	033-3321-15	1/16W 3.3k ohm J
Q509	125-2046-91	DTC114EUBTL	R337	032-0150-50	1/16W 10k ohm F	R497	033-1031-15	1/16W 10k ohm J
Q510	125-2032-93	RN1303	R338	033-4731-15	1/16W 47k ohm J	R521	033-1031-15	1/16W 10k ohm J
Q511	192-4081-00	2SC4081	R344	033-1011-15	1/16W 100 ohm J	R522	033-3331-15	1/16W 33k ohm J
Q512	191-1197-50	2SB1197K Q,R	R348	033-1031-15	1/16W 10k ohm J	R527	033-1821-15	1/16W 1.8k ohm J
Q513	125-2046-91	DTC114EUBTL	R349	033-1011-15	1/16W 100 ohm J	R528	033-1031-15	1/16W 10k ohm J
Q514	192-4116-51	2SC4116 G,L	R350	033-1011-15	1/16W 100 ohm J	R529	119-5611-15	1/10W 560 ohm
Q515	191-1197-50	2SB1197K Q,R	R352	033-1011-15	1/16W 100 ohm J	R530	119-1031-15	1/10W 10k ohm
Q516	125-2046-91	DTC114EUBTL	R354	033-1011-15	1/16W 100 ohm J	R531	032-0208-51	1/4W 15k ohm
R102	119-0000-05	1/10W 0 ohm JW	R355	033-1031-15	1/16W 10k ohm J	R533	AQZ0457	1/16W 150k ohm 1%
R115	033-0000-05	1/16W 0 ohm	R356	119-0000-05	1/10W 0 ohm JW	R534	AQZ0461	1/16W 270k ohm 1%
R124	033-1811-15	1/16W 180 ohm J	R357	119-0000-05	1/10W 0 ohm JW	R535	033-4731-15	1/16W 47k ohm J
R125	033-3311-15	1/16W 330 ohm J	R358	033-1011-15	1/16W 100 ohm J	R536	033-1031-15	1/16W 10k ohm J
R126	033-4741-15	1/16W 470k ohm J	R359	119-2201-15	1/10W 22 ohm	R537	119-4731-15	1/10W 47k ohm
R127	033-1201-15	1/16W 12 ohm	R360	032-0150-54	1/16W 1k ohm F	R538	119-2731-15	1/10W 27k ohm
R128	033-4741-15	1/16W 470k ohm J	R361	032-0150-54	1/16W 1k ohm F	R539	119-3321-15	1/10W 3.3k ohm
R129	033-5601-15	1/16W 56 ohm J	R362	032-0150-54	1/16W 1k ohm F	R540	119-0000-05	1/10W 0 ohm JW
R134	033-2231-15	1/16W 22k ohm J	R363	032-0150-54	1/16W 1k ohm F	R541	119-0000-05	1/10W 0 ohm JW
R135	033-3921-15	1/16W 3.9k ohm J	R364	033-3331-15	1/16W 33k ohm J	R542	119-0000-05	1/10W 0 ohm JW
R136	033-0000-05	1/16W 0 ohm	R365	033-3331-15	1/16W 33k ohm J	R543	116-4721-15	1/4W 4.7k ohm
R137	033-0000-05	1/16W 0 ohm	R405	033-0000-05	1/16W 0 ohm	R544	119-2221-15	1/10W 2.2k ohm
R138	033-0000-05	1/16W 0 ohm	R411	033-1011-15	1/16W 100 ohm J	R546	116-1531-15	1/4W 15k ohm
R139	033-0000-05	1/16W 0 ohm	R412	033-1011-15	1/16W 100 ohm J	R547	116-4791-15	1/4W 4.7 ohm
R140	033-0000-05	1/16W 0 ohm	R413	119-4711-15	1/10W 470 ohm	R548	116-4791-15	1/4W 4.7 ohm
R143	033-0000-05	1/16W 0 ohm	R414	119-4711-15	1/10W 470 ohm	R550	032-0221-65	1/16W 68k ohm F
R144	033-0000-05	1/16W 0 ohm	R415	119-4711-15	1/10W 470 ohm	R551	032-0221-80	1/16W 6.2k ohm F
			R416	119-4711-15	1/10W 470 ohm	R555	032-0221-51	1/16W 4.7k ohm F
			R418	033-1041-15	1/16W 100k ohm J	R556	032-0221-51	1/16W 4.7k ohm F
			R419	033-3311-15	1/16W 330 ohm J	R557	033-5611-15	1/16W 560 ohm J

REF No.	PART No.	DESCRIPTION	REF No.	PART No.	DESCRIPTION	REF No.	PART No.	DESCRIPTION
R558	033-1031-15	1/16W 10k ohm J	R591	033-0000-05	1/16W 0 ohm	VR215	001-9210-50	AVR-M1608C270MTA AD
R560	032-0221-76	1/16W 24k ohm	R592	116-3991-15	1/4W 3.9 ohm	VR216	001-9210-50	AVR-M1608C270MTA AD
R561	032-0221-61	1/16W 6.8k ohm F	R593	116-3991-15	1/4W 3.9 ohm	VR502	001-9210-50	AVR-M1608C270MTA AD
R562	033-0000-05	1/16W 0 ohm	RN401	050-0140-52	1/32W 100 ohm x4J	VR503	001-9210-50	AVR-M1608C270MTA AD
R563	033-0000-05	1/16W 0 ohm	RN402	050-0140-52	1/32W 100 ohm x4J	VR504	001-9210-50	AVR-M1608C270MTA AD
R564	033-0000-05	1/16W 0 ohm	RN405	050-0140-63	1/32W 47k ohm x4J	X301	061-3537-90	41.6MHz
R565	033-0000-05	1/16W 0 ohm	RN406	050-0140-63	1/32W 47k ohm x4J	X401	061-3567-90	8.000MHz AT-41CD2
R567	032-0221-65	1/16W 68k ohm F	RN407	050-0140-54	1/32W 1k ohm x4J	ZD101	060-8107-50	SURGE PROTECTO R
R568	032-0221-61	1/16W 6.8k ohm F	RN408	050-0140-54	1/32W 1k ohm x4J	ZD501	001-4312-34	02DZ6.2X TPH3-F
R575	033-0000-05	1/16W 0 ohm	RN409	050-0140-54	1/32W 1k ohm x4J	ZD503	001-4305-25	UDZSTE-17 9.1B
R576	032-0148-64	1/10W 390k ohm D	T101	010-4100-50	0.215uH	ZD507	001-4912-90	SM5S22A-HE3/2D
R577	032-0148-61	1/10W 130k ohm D	TH101	002-0229-00	PTH8L05BAIR8M1B	ZD508	001-4312-47	02DZ9.1Y TPH3-F
R578	033-1841-15	1/16W 180k ohm J	VR208	001-9210-50	AVR-M1608C270MTA AD	PWB	039-3795-00	PWB(WITHOUT COMPONENTS)
R579	033-3341-15	1/16W 330k ohm J	VR209	001-9210-50	AVR-M1608C270MTA AD			
R581	033-1031-15	1/16W 10k ohm J	VR210	001-9210-50	AVR-M1608C270MTA AD			
R582	032-0150-61	1/16W 15k ohm F	VR213	001-9210-50	AVR-M1608C270MTA AD			
R583	033-5611-15	1/16W 560 ohm J	VR214	001-9210-50	AVR-M1608C270MTA AD			
R584	033-1031-15	1/16W 10k ohm J						
R585	119-0000-05	1/10W 0 ohm JW						
R588	033-0000-05	1/16W 0 ohm						
R589	033-0000-05	1/16W 0 ohm						
R590	033-0000-05	1/16W 0 ohm						

SW PWB(B2) section : PP-3442C-A

REF No.	PART No.	DESCRIPTION	REF No.	PART No.	DESCRIPTION	REF No.	PART No.	DESCRIPTION
C601	043-0568-90	25V 2.2uF	D630	001-7109-90	SML-311DTT86 ORG	R625	116-8211-15	1/4W 820 ohm
C602	043-0568-90	25V 2.2uF	D631	001-7109-90	SML-311DTT86 ORG	R626	116-8211-15	1/4W 820 ohm
C603	043-0552-90	6.3V 47uF M	D632	001-7109-90	SML-311DTT86 ORG	R635	032-0150-55	1/16W 2.7k ohm F
C604	046-4712-58	470pF K B	D633	001-7109-90	SML-311DTT86 ORG	R636	032-0150-55	1/16W 2.7k ohm F
C605	043-0568-90	25V 2.2uF	D634	001-7109-90	SML-311DTT86 ORG	R637	032-0150-55	1/16W 2.7k ohm F
C606	046-1022-58	50V 1000pF	D635	001-7109-90	SML-311DTT86 ORG	R638	032-0150-55	1/16W 2.7k ohm F
C607	046-1022-58	50V 1000pF	D636	001-7109-90	SML-311DTT86 ORG	R651	032-0140-14	1/10W 1.2k ohm F
C608	046-1022-58	50V 1000pF	D637	001-7109-90	SML-311DTT86 ORG	SW601	013-6202-52	SKPMBJE010
C609	043-0552-90	6.3V 47uF M	D638	001-7109-90	SML-311DTT86 ORG	SW602	013-6201-53	SKPMAPE010
C610	043-6400-90	16V 4.7uF K	D639	001-7109-90	SML-311DTT86 ORG	SW603	013-6201-53	SKPMAPE010
D601	001-7109-90	SML-311DTT86 ORG	D640	001-7109-90	SML-311DTT86 ORG	SW604	016-7006-00	ROTARY SW
D602	001-7109-90	SML-311DTT86 ORG	IC601	051-6105-00	LC75818PHT-8561-H	SW605	016-7006-00	ROTARY SW
D603	001-7109-90	SML-311DTT86 ORG	J601	075-0395-01	JACK	SW606	013-6202-52	SKPMBJE010
D604	001-7109-90	SML-311DTT86 ORG	J602	074-3055-26	26P	SW607	013-6202-52	SKPMBJE010
D605	001-7109-90	SML-311DTT86 ORG	LC601	379-1455-52	LCD	SW608	013-6202-52	SKPMBJE010
D606	001-7109-90	SML-311DTT86 ORG	R601	033-0000-05	1/16W 0 ohm	SW609	013-6202-52	SKPMBJE010
D607	001-7109-90	SML-311DTT86 ORG	R602	033-1031-15	1/16W 10k ohm J	SW610	013-6202-52	SKPMBJE010
D608	001-7109-90	SML-311DTT86 ORG	R603	116-1521-15	1/4W 1.5k ohm	SW611	013-6202-52	SKPMBJE010
D609	001-7109-90	SML-311DTT86 ORG	R604	116-1021-15	1/4W 1k ohm	SW612	013-6201-53	SKPMAPE010
D610	001-7109-90	SML-311DTT86 ORG	R605	116-1521-15	1/4W 1.5k ohm	SW613	013-6201-53	SKPMAPE010
D611	001-7109-90	SML-311DTT86 ORG	R606	116-1521-15	1/4W 1.5k ohm	SW614	013-6201-53	SKPMAPE010
D612	001-7109-90	SML-311DTT86 ORG	R607	116-1021-15	1/4W 1k ohm	SW615	013-6201-53	SKPMAPE010
D613	001-7109-90	SML-311DTT86 ORG	R608	116-1021-15	1/4W 1k ohm	SW616	013-6202-52	SKPMBJE010
D614	001-7109-90	SML-311DTT86 ORG	R609	116-1021-15	1/4W 1k ohm	SW617	013-6202-52	SKPMBJE010
D615	001-7109-90	SML-311DTT86 ORG	R610	116-3321-15	1/4W 3.3k ohm	SW618	013-6202-52	SKPMBJE010
D616	001-7109-90	SML-311DTT86 ORG	R611	116-3321-15	1/4W 3.3k ohm	SW619	013-6202-52	SKPMBJE010
D617	001-7109-90	SML-311DTT86 ORG	R612	116-3321-15	1/4W 3.3k ohm	SW620	013-6202-52	SKPMBJE010
D618	001-7109-90	SML-311DTT86 ORG	R613	116-3321-15	1/4W 3.3k ohm	VR601	001-9210-50	AVR-M1608C270MTA AD
D619	001-7109-90	SML-311DTT86 ORG	R614	116-3321-15	1/4W 3.3k ohm	VR602	001-9210-50	AVR-M1608C270MTA AD
D620	001-7109-90	SML-311DTT86 ORG	R615	116-3321-15	1/4W 3.3k ohm	VR603	001-9210-50	AVR-M1608C270MTA AD
D621	001-7109-90	SML-311DTT86 ORG	R616	116-1521-15	1/4W 1.5k ohm	VR604	001-9210-50	AVR-M1608C270MTA AD
D622	001-7109-90	SML-311DTT86 ORG	R617	116-1521-15	1/4W 1.5k ohm	PWB	039-3962-00	PWB(WITHOUT COMPONENTS)
D623	001-7109-90	SML-311DTT86 ORG	R618	116-1521-15	1/4W 1.5k ohm			
D624	001-7109-90	SML-311DTT86 ORG	R619	116-1521-15	1/4W 1.5k ohm			
D625	001-7109-90	SML-311DTT86 ORG	R620	116-1821-15	1/4W 1.8k ohm			
D626	001-7109-90	SML-311DTT86 ORG	R621	116-1821-15	1/4W 1.8k ohm			
D627	001-7109-90	SML-311DTT86 ORG	R622	116-8211-15	1/4W 820 ohm			
D628	001-7109-90	SML-311DTT86 ORG	R623	116-8211-15	1/4W 820 ohm			
D629	001-7109-90	SML-311DTT86 ORG	R624	116-8211-15	1/4W 820 ohm			

MAIN PWB(B1) section : PP-3442V-A

REF No.	PART No.	DESCRIPTION	REF No.	PART No.	DESCRIPTION	REF No.	PART No.	DESCRIPTION
C122	166-1201-50	12pF CH	C353	043-0559-90	6.3V 22uF	C555	046-1042-78	16V 0.1uF
C128	045-2201-50	22pFJ CH	C354	168-1052-78	16V 1uF K	C556	043-0552-90	6.3V 47uF M
C129	046-1022-58	50V 1000pF	C355	046-1042-78	16V 0.1uF	C557	043-6400-90	16V 4.7uF K
C130	046-1022-58	50V 1000pF	C356	046-1042-78	16V 0.1uF	C558	043-0570-90	16V 2.2uF K
C131	045-3901-50	39pFJ CH	C357	046-1042-78	16V 0.1uF	C559	043-0570-90	16V 2.2uF K
C132	045-1211-50	120pFJ CH	C358	045-2201-50	22pFJ CH	C562	046-1022-58	50V 1000pF
C133	045-4796-50	4.7pFJ CH	C360	046-1042-78	16V 0.1uF	C564	168-4752-98	4.7uF K
C134	045-1501-50	15pFJ CH	C361	046-1042-78	16V 0.1uF	C565	043-0603-90	16V 10uF
C135	046-1022-58	50V 1000pF	C362	046-1042-78	16V 0.1uF	C568	046-1022-58	50V 1000pF
C136	046-3922-58	3900pF K B	C364	046-1042-78	16V 0.1uF	C569	043-7503-90	4.7uF
C137	046-1022-58	50V 1000pF	C365	045-4711-50	470pFJ CH	C570	043-6400-90	16V 4.7uF K
C138	046-1032-78	16V 0.01uF	C366	046-1022-58	50V 1000pF	C571	043-0604-90	25V 10uF B
C139	046-1032-78	16V 0.01uF	C367	046-1042-78	16V 0.1uF	C572	046-7701-90	2.2uF
C141	046-3322-58	3300pF K B	C368	046-3322-58	3300pF K B	C574	045-4701-50	47pF CH
C142	046-2232-78	0.022uF K B	C369	046-3322-58	3300pF K B	C575	168-4742-78	0.47uF K
C143	046-1022-58	50V 1000pF	C370	042-4033-90	6.3V 220uF	C576	168-1042-38	50V 0.1uF K
C144	046-2232-78	0.022uF K B	C371	046-3322-58	3300pF K B	C577	046-1522-58	1500pF K B
C145	046-2232-78	0.022uF K B	C372	046-3322-58	3300pF K B	C578	045-2201-50	22pFJ CH
C146	046-2232-78	0.022uF K B	C373	046-1042-78	16V 0.1uF	C579	178-2242-38	0.22uF B
C147	046-2232-78	0.022uF K B	C375	046-3322-58	3300pF K B	C580	042-4000-90	16V 470uF
C148	043-0562-90	10V 0.22uF	C376	046-3322-58	3300pF K B	C581	165-4763-35	16V 47uF
C149	046-2232-78	0.022uF K B	C377	046-1522-58	1500pF K B	D104	001-9013-90	BA891
C150	043-0563-90	16V 47uF	C378	046-1522-58	1500pF K B	D106	001-9013-90	BA891
C162	046-1042-78	16V 0.1uF	C379	046-1522-58	1500pF K B	D203	001-0580-90	1SS352
C202	046-2222-58	2200pF K B	C380	046-1522-58	1500pF K B	D401	001-2630-90	1SS420-TPL3,F
C203	046-1042-78	16V 0.1uF	C381	043-0559-90	6.3V 22uF	D501	001-2412-90	RR264M-400
C204	046-2222-58	2200pF K B	C401	046-1042-78	16V 0.1uF	D502	001-0580-90	1SS352
C206	165-3363-25	10V 33uF	C402	046-1042-78	16V 0.1uF	D503	001-2412-90	RR264M-400
C214	168-4722-55	4700pF K	C403	166-2201-50	22pF CH	D504	001-2412-90	RR264M-400
C215	168-4722-55	4700pF K	C404	166-2201-50	22pF CH	D505	001-2639-90	RSX201L-30
C216	168-3332-78	0.033uF K	C405	168-4722-55	4700pF K	D506	001-2628-90	RB160M-40
C217	168-3332-78	0.033uF K	C406	168-2242-58	0.22uF K	IC101	-----	TEF7000 (thermal pad type) (402590-051)
C218	168-1042-78	16V 0.1uF K	C407	168-4752-98	4.7uF K	IC301	051-3034-90	NJM4558V
C219	168-4722-55	4700pF K	C408	004-1580-14	45pF	IC302	-----	SAF7741HV/N125 (DSP) (thermal pad type) (674700-051)
C301	043-0570-90	16V 2.2uF K	C410	046-1042-78	16V 0.1uF	IC303	051-7106-90	CD4052B-PWR
C302	043-0570-90	16V 2.2uF K	C411	165-4763-15	6.3V 47uF	IC401	-----	S-24C16CI-T8T5U3 (E2P-ROM) (Software should be written on production) (942650-051)
C303	043-0570-90	16V 2.2uF K	C412	045-2701-50	27pFJ CH	IC402	-----	R5F64176PFB (FLASH-MICOM) (Software should be written on production) (033310-052)
C304	043-0570-90	16V 2.2uF K	C413	046-1042-78	16V 0.1uF	IC403	051-6647-80	TJA1051T,118
C305	045-2201-50	22pFJ CH	C414	046-1032-78	16V 0.01uF	IC404	051-5481-90	S-1009N30I-M5T1U
C306	045-2201-50	22pFJ CH	C415	046-1022-58	50V 1000pF	IC502	051-2067-00	TB2946HQ
C309	046-1042-78	16V 0.1uF	C416	046-1022-58	50V 1000pF	IC504	051-5443-08	BD4850G-TR
C310	168-1052-78	16V 1uF K	C417	046-1022-58	50V 1000pF	IC505	-----	BD00C0AWFP (thermal pad type) (358290-051)
C312	046-1042-78	16V 0.1uF	C418	042-2273-25	10V 220uF M	IC507	051-3034-90	NJM4558V
C314	045-2201-50	22pFJ CH	C419	042-2273-25	10V 220uF M	IC508	051-3579-90	S1112B15MCL6ATF G
C315	045-2201-50	22pFJ CH	C420	045-1011-50	100pFJ CH	IC509	051-3708-90	S-1112B33MC-L6STF G
C316	046-1042-78	16V 0.1uF	C517	168-1542-58	0.15uF K	IC511	-----	BD00C0AWFP (thermal pad type) (358290-051)
C317	046-1042-78	16V 0.1uF	C518	168-1542-58	0.15uF K	IC513	051-3709-90	BD00D0AWHFP-TR
C318	046-1042-78	16V 0.1uF	C519	168-1542-58	0.15uF K	IC514	-----	LT3481EDD#TRPBF (SW-REGULATOR) (thermal pad type) (361280-051)
C319	046-1042-78	16V 0.1uF	C520	168-1542-58	0.15uF K	J201	074-2260-88	38P
C320	043-0570-90	16V 2.2uF K	C521	168-1542-58	0.15uF K	J203	074-1302-16	16P
C321	043-0570-90	16V 2.2uF K	C522	168-1542-58	0.15uF K	J501	074-4009-20	20P
C322	168-4752-98	4.7uF K	C523	168-1542-58	0.15uF K	L110	010-3062-54	290nH
C323	168-4752-98	4.7uF K	C524	168-1542-58	0.15uF K	L111	010-3406-56	3.3uH J
C324	046-1042-78	16V 0.1uF	C525	168-1052-78	16V 1uF K	L112	010-3062-56	0.5uH
C325	046-1042-78	16V 0.1uF	C526	042-1760-90	16V 10uF M	L113	010-3062-53	0.215uH
C326	046-1042-78	16V 0.1uF	C527	178-2742-78	0.27uF			
C327	046-1042-78	16V 0.1uF	C528	168-1052-78	16V 1uF K			
C328	046-1042-78	16V 0.1uF	C530	043-0574-90	25V 1.0uF			
C329	045-1007-50	10 +/-0.5pF CH	C532	168-1832-55	0.018uF K			
C330	045-1007-50	10 +/-0.5pF CH	C533	043-5600-90	0.10uF			
C331	046-1042-78	16V 0.1uF	C534	042-1717-00	16V 3300uF			
C333	168-4752-98	4.7uF K	C535	168-6822-55	6800pF K			
C335	046-1042-78	16V 0.1uF	C536	168-6822-55	6800pF K			
C336	046-1042-78	16V 0.1uF	C537	168-6822-55	6800pF K			
C337	046-1042-78	16V 0.1uF	C538	168-6822-55	6800pF K			
C338	042-4033-90	6.3V 220uF	C539	168-6822-55	6800pF K			
C339	046-1042-78	16V 0.1uF	C540	168-6822-55	6800pF K			
C340	168-4752-98	4.7uF K	C541	168-6822-55	6800pF K			
C341	045-2201-50	22pFJ CH	C542	168-6822-55	6800pF K			
C342	046-1042-78	16V 0.1uF	C543	168-1042-78	16V 0.1uF K			
C345	046-1042-78	16V 0.1uF	C544	168-2232-55	0.022uF K			
C347	168-1052-78	16V 1uF K	C545	043-0604-90	25V 10uF B			
C348	046-1042-78	16V 0.1uF	C546	046-1022-58	50V 1000pF			
C349	046-1042-78	16V 0.1uF	C547	043-7503-90	4.7uF			
C350	046-1042-78	16V 0.1uF	C548	043-6400-90	16V 4.7uF K			
C351	046-1042-78	16V 0.1uF	C553	043-0603-90	16V 10uF			
C352	043-0552-90	6.3V 47uF M	C554	043-0603-90	16V 10uF			

REF No.	PART No.	DESCRIPTION	REF No.	PART No.	DESCRIPTION	REF No.	PART No.	DESCRIPTION
L114	010-3439-51	1.8uH	R226	119-0000-05	1/10W 0 ohm JW	R437	033-1031-15	1/16W 10k ohm J
L115	010-2290-52	330uH	R301	119-1031-15	1/10W 10k ohm	R440	033-4731-15	1/16W 47k ohm J
L116	010-2290-52	330uH	R302	119-1031-15	1/10W 10k ohm	R442	033-4791-15	1/16W 4.7 ohm
L117	010-3104-54	600 ohm/100MHz	R303	032-0140-89	1/10W 47k ohm F	R445	033-0000-05	1/16W 0 ohm
L301	010-3104-54	600 ohm/100MHz	R304	032-0140-89	1/10W 47k ohm F	R446	033-4721-15	1/16W 4.7k ohm J
L302	010-3104-54	600 ohm/100MHz	R305	032-0140-89	1/10W 47k ohm F	R447	033-4731-15	1/16W 47k ohm J
L303	010-3104-54	600 ohm/100MHz	R306	032-0140-89	1/10W 47k ohm F	R448	033-1031-15	1/16W 10k ohm J
L304	010-3104-54	600 ohm/100MHz	R307	033-1031-15	1/16W 10k ohm J	R449	033-4731-15	1/16W 47k ohm J
L305	010-3104-54	600 ohm/100MHz	R308	032-0140-89	1/10W 47k ohm F	R450	033-1021-15	1/16W 1k ohm J
L306	010-3104-54	600 ohm/100MHz	R309	032-0140-89	1/10W 47k ohm F	R451	033-1011-15	1/16W 100 ohm J
L307	010-3104-54	600 ohm/100MHz	R310	032-0140-89	1/10W 47k ohm F	R454	033-1011-15	1/16W 100 ohm J
L308	010-3104-54	600 ohm/100MHz	R311	032-0140-89	1/10W 47k ohm F	R456	033-1021-15	1/16W 1k ohm J
L309	010-3104-54	600 ohm/100MHz	R313	033-1031-15	1/16W 10k ohm J	R457	033-4721-15	1/16W 4.7k ohm J
L310	010-3104-54	600 ohm/100MHz	R314	032-0221-53	1/16W 18k ohm F	R458	033-1011-15	1/16W 100 ohm J
L311	010-3104-54	600 ohm/100MHz	R315	032-0221-53	1/16W 18k ohm F	R459	033-1011-15	1/16W 100 ohm J
L312	010-3104-54	600 ohm/100MHz	R316	032-0221-53	1/16W 18k ohm F	R460	033-4731-15	1/16W 47k ohm J
L313	010-3104-54	600 ohm/100MHz	R317	032-0221-53	1/16W 18k ohm F	R462	033-3331-15	1/16W 33k ohm J
L314	010-3104-54	600 ohm/100MHz	R318	033-1811-15	1/16W 180 ohm J	R463	033-3331-15	1/16W 33k ohm J
L315	010-3104-54	600 ohm/100MHz	R319	033-1811-15	1/16W 180 ohm J	R466	033-2231-15	1/16W 22k ohm J
L316	010-3104-54	600 ohm/100MHz	R320	033-1031-15	1/16W 10k ohm J	R467	033-4721-15	1/16W 4.7k ohm J
L317	010-3104-54	600 ohm/100MHz	R321	033-1031-15	1/16W 10k ohm J	R468	033-4721-15	1/16W 4.7k ohm J
L318	010-3104-54	600 ohm/100MHz	R322	033-1031-15	1/16W 10k ohm J	R475	033-4731-15	1/16W 47k ohm J
L319	010-3104-54	600 ohm/100MHz	R323	033-1011-15	1/16W 100 ohm J	R479	033-3321-15	1/16W 3.3k ohm J
L320	010-3105-70	240ohm/100MHz	R324	033-1031-15	1/16W 10k ohm J	R480	033-3321-15	1/16W 3.3k ohm J
L321	010-3104-54	600 ohm/100MHz	R325	032-0150-50	1/16W 10k ohm F	R481	033-2221-15	1/16W 2.2k ohm J
L322	010-3104-54	600 ohm/100MHz	R326	033-1031-15	1/16W 10k ohm J	R488	033-1021-15	1/16W 1k ohm J
L323	010-3104-54	600 ohm/100MHz	R327	032-0150-50	1/16W 10k ohm F	R489	033-1021-15	1/16W 1k ohm J
L401	010-3406-54	2.2uH J	R329	032-0150-50	1/16W 10k ohm F	R490	033-1021-15	1/16W 1k ohm J
L502	010-8048-00	240uH	R331	032-0150-50	1/16W 10k ohm F	R491	033-1021-15	1/16W 1k ohm J
L507	010-3104-54	600 ohm/100MHz	R332	119-2201-15	1/10W 22 ohm	R492	033-0000-05	1/16W 0 ohm
L508	010-3414-93	4.7uH	R334	033-1041-15	1/16W 100k ohm J	R493	033-0000-05	1/16W 0 ohm
P101	092-2210-02	ANT-RECEPT	R335	033-1041-15	1/16W 100k ohm J	R495	033-3321-15	1/16W 3.3k ohm J
P410	076-3011-76	26P	R336	032-0150-50	1/16W 10k ohm F	R496	033-3321-15	1/16W 3.3k ohm J
Q206	125-2046-91	DTC114EUBTL	R337	032-0150-50	1/16W 10k ohm F	R497	033-1031-15	1/16W 10k ohm J
Q207	125-0021-96	DTA144TU	R338	033-4731-15	1/16W 47k ohm J	R521	033-1031-15	1/16W 10k ohm J
Q301	125-2046-95	DTC143ZUB	R344	033-1011-15	1/16W 100 ohm J	R522	033-3331-15	1/16W 3.3k ohm J
Q302	125-7021-90	RQ1A060ZPTR	R348	033-1031-15	1/16W 10k ohm J	R527	033-1821-15	1/16W 1.8k ohm J
Q505	191-1197-50	2SB1197K Q,R	R349	033-1011-15	1/16W 100 ohm J	R528	033-1031-15	1/16W 10k ohm J
Q506	192-4116-00	2SC4116	R350	033-1011-15	1/16W 100 ohm J	R529	119-5611-15	1/10W 560 ohm
Q507	125-2046-91	DTC114EUBTL	R352	033-1011-15	1/16W 100 ohm J	R530	119-1031-15	1/10W 10k ohm
Q509	125-2046-91	DTC114EUBTL	R354	033-1011-15	1/16W 100 ohm J	R531	032-0208-51	1/4W 15k ohm
Q510	125-2032-93	RN1303	R355	033-1031-15	1/16W 10k ohm J	R533	AQZ0457	1/16W 150k ohm 1%
Q511	192-4081-00	2SC4081	R356	119-0000-05	1/10W 0 ohm JW	R534	AQZ0461	1/16W 270k ohm 1%
Q512	191-1197-50	2SB1197K Q,R	R357	119-0000-05	1/10W 0 ohm JW	R535	033-4731-15	1/16W 47k ohm J
Q513	125-2046-91	DTC114EUBTL	R358	033-1011-15	1/16W 100 ohm J	R536	033-1031-15	1/16W 10k ohm J
Q514	192-4116-51	2SC4116 G,L	R359	119-2201-15	1/10W 22 ohm	R537	119-4731-15	1/10W 47k ohm
Q515	191-1197-50	2SB1197K Q,R	R360	032-0150-54	1/16W 1k ohm F	R538	119-2731-15	1/10W 27k ohm
Q516	125-2046-91	DTC114EUBTL	R361	032-0150-54	1/16W 1k ohm F	R539	119-3321-15	1/10W 3.3k ohm
R102	119-0000-05	1/10W 0 ohm JW	R362	032-0150-54	1/16W 1k ohm F	R540	119-0000-05	1/10W 0 ohm JW
R115	033-0000-05	1/16W 0 ohm	R363	032-0150-54	1/16W 1k ohm F	R541	119-0000-05	1/10W 0 ohm JW
R124	033-1811-15	1/16W 180 ohm J	R364	033-3331-15	1/16W 33k ohm J	R542	119-0000-05	1/10W 0 ohm JW
R125	033-3311-15	1/16W 330 ohm J	R365	033-3331-15	1/16W 33k ohm J	R543	116-4721-15	1/4W 4.7k ohm
R126	033-4741-15	1/16W 470k ohm J	R405	033-0000-05	1/16W 0 ohm	R544	119-2221-15	1/10W 2.2k ohm
R127	033-1201-15	1/16W 12 ohm	R411	033-1011-15	1/16W 100 ohm J	R546	116-1531-15	1/4W 15k ohm
R128	033-4741-15	1/16W 470k ohm J	R412	033-1011-15	1/16W 100 ohm J	R547	116-4791-15	1/4W 4.7 ohm
R129	033-5601-15	1/16W 56 ohm J	R413	119-4711-15	1/10W 470 ohm	R548	116-4791-15	1/4W 4.7 ohm
R134	033-2231-15	1/16W 22k ohm J	R414	119-4711-15	1/10W 470 ohm	R550	032-0221-65	1/16W 68k ohm F
R135	033-3921-15	1/16W 3.9k ohm J	R415	119-4711-15	1/10W 470 ohm	R551	032-0221-80	1/16W 6.2k ohm F
R136	033-0000-05	1/16W 0 ohm	R416	119-4711-15	1/10W 470 ohm	R555	032-0221-51	1/16W 4.7k ohm F
R137	033-0000-05	1/16W 0 ohm	R418	033-1041-15	1/16W 100k ohm J	R556	032-0221-51	1/16W 4.7k ohm F
R138	033-0000-05	1/16W 0 ohm	R419	033-3311-15	1/16W 330 ohm J	R557	033-5611-15	1/16W 560 ohm J
R139	033-0000-05	1/16W 0 ohm	R420	033-3311-15	1/16W 330 ohm J	R558	033-1031-15	1/16W 10k ohm J
R140	033-0000-05	1/16W 0 ohm	R421	033-1041-15	1/16W 100k ohm J	R560	032-0221-76	1/16W 24k ohm F
R143	033-0000-05	1/16W 0 ohm	R422	033-2221-15	1/16W 2.2k ohm J	R561	032-0221-61	1/16W 6.8k ohm F
R144	033-0000-05	1/16W 0 ohm	R423	033-2221-15	1/16W 2.2k ohm J	R562	033-0000-05	1/16W 0 ohm
R156	119-0000-05	1/10W 0 ohm JW	R424	119-1031-15	1/10W 10k ohm	R563	033-0000-05	1/16W 0 ohm
R157	033-1051-15	1/16W 1M ohm J	R425	119-1031-15	1/10W 10k ohm	R564	033-0000-05	1/16W 0 ohm
R158	033-1051-15	1/16W 1M ohm J	R426	119-1031-15	1/10W 10k ohm	R565	033-0000-05	1/16W 0 ohm
R203	033-1011-15	1/16W 100 ohm J	R427	119-1031-15	1/10W 10k ohm	R567	032-0221-65	1/16W 68k ohm F
R214	119-4731-15	1/10W 47k ohm	R428	033-1031-15	1/16W 10k ohm J	R568	032-0221-61	1/16W 6.8k ohm F
R215	032-0140-89	1/10W 47k ohm F	R429	033-1031-15	1/16W 10k ohm J	R575	033-0000-05	1/16W 0 ohm
R216	032-0140-89	1/10W 47k ohm F	R430	033-1011-15	1/16W 100 ohm J	R576	032-0148-64	1/10W 390k ohm D
R217	119-1531-15	1/10W 15k ohm	R431	033-1011-15	1/16W 100 ohm J	R577	032-0148-63	1/10W 130k ohm D
R218	119-3011-15	1/10W 300 ohm	R432	116-6201-15	1/4W 62 ohm	R578	033-1841-15	1/16W 180k ohm J
R219	119-1031-15	1/10W 10k ohm	R433	116-6201-15	1/4W 62 ohm	R579	033-3341-15	1/16W 330k ohm J
R220	116-6201-15	1/4W 62 ohm	R434	033-0000-05	1/16W 0 ohm	R581	033-1031-15	1/16W 10k ohm J
R221	116-6201-15	1/4W 62 ohm	R435	033-4731-15	1/16W 47k ohm J	R582	032-0150-51	1/16W 15k ohm F
R225	119-0000-05	1/10W 0 ohm JW	R436	033-4731-15	1/16W 47k ohm J	R583	033-5611-15	1/16W 560 ohm J

REF No.	PART No.	DESCRIPTION	REF No.	PART No.	DESCRIPTION	REF No.	PART No.	DESCRIPTION
R584	033-1031-15	1/16W 10k ohm J	VR208	001-9210-50	AVR-M1608C270MTA	VR503	001-9210-50	AVR-M1608C270MTA
R585	119-0000-05	1/10W 0 ohm JW			AD			AD
R588	033-0000-05	1/16W 0 ohm	VR209	001-9210-50	AVR-M1608C270MTA	VR504	001-9210-50	AVR-M1608C270MTA
R589	033-0000-05	1/16W 0 ohm			AD			AD
R590	033-0000-05	1/16W 0 ohm	VR210	001-9210-50	AVR-M1608C270MTA	X301	061-3537-90	41.6MHz
R591	033-0000-05	1/16W 0 ohm			AD	X401	061-3567-90	8.000MHz AT-41CD2
R592	116-3991-15	1/4W 3.9 ohm	VR213	001-9210-50	AVR-M1608C270MTA	ZD101	060-8107-50	SURGE PROTECTO
R593	116-3991-15	1/4W 3.9 ohm			AD			R
RN401	050-0140-52	1/32W 100 ohm x4J	VR214	001-9210-50	AVR-M1608C270MTA	ZD501	001-4312-34	02DZ6.2X TPH3-F
RN402	050-0140-52	1/32W 100 ohm x4J			AD	ZD503	001-4305-25	UDZSTE-17 9.1B
RN405	050-0140-63	1/32W 47k ohm x4J	VR215	001-9210-50	AVR-M1608C270MTA	ZD507	001-4912-90	SM5S22A-HE3/2D
RN406	050-0140-63	1/32W 47k ohm x4J			AD	ZD508	001-4312-47	02DZ9.1Y TPH3-F
RN407	050-0140-54	1/32W 1k ohm x4J	VR216	001-9210-50	AVR-M1608C270MTA	PWB	039-3795-00	PWB(WITHOUT
RN408	050-0140-54	1/32W 1k ohm x4J			AD			COMPONENTS)
RN409	050-0140-54	1/32W 1k ohm x4J	VR502	001-9210-50	AVR-M1608C270MTA			
T101	010-4100-50	0.215uH			AD			

SW PWB(B2) section : PP-3442V-A

REF No.	PART No.	DESCRIPTION	REF No.	PART No.	DESCRIPTION	REF No.	PART No.	DESCRIPTION
C601	043-0568-90	25V 2.2uF	D623	001-7093-91	RFY1112H-16-TR YE	R611	116-5621-15	1/4W 5.6k ohm
C602	043-0568-90	25V 2.2uF			L	R612	116-5621-15	1/4W 5.6k ohm
C603	043-0552-90	6.3V 47uF M	D624	001-7093-91	RFY1112H-16-TR YE	R613	116-5621-15	1/4W 5.6k ohm
C604	046-4712-58	470pF K B			L	R614	116-5621-15	1/4W 5.6k ohm
C605	043-0568-90	25V 2.2uF	D625	001-7093-91	RFY1112H-16-TR YE	R615	116-5621-15	1/4W 5.6k ohm
C606	046-1022-58	50V 1000pF			L	R616	116-3921-15	1/4W 3.9k ohm
C607	046-1022-58	50V 1000pF	D626	001-7093-91	RFY1112H-16-TR YE	R617	116-3921-15	1/4W 3.9k ohm
C608	046-1022-58	50V 1000pF			L	R618	116-3921-15	1/4W 3.9k ohm
C609	043-0552-90	6.3V 47uF M	D627	001-7093-91	RFY1112H-16-TR YE	R619	116-3921-15	1/4W 3.9k ohm
C610	043-6400-90	16V 4.7uF K			L	R620	116-3321-15	1/4W 3.3k ohm
D601	001-7093-91	RFY1112H-16-TR YE	D628	001-7093-91	RFY1112H-16-TR YE	R621	116-3321-15	1/4W 3.3k ohm
		L			L	R622	116-1521-15	1/4W 1.5k ohm
D602	001-7093-91	RFY1112H-16-TR YE	D629	001-7093-91	RFY1112H-16-TR YE	R623	116-1521-15	1/4W 1.5k ohm
		L			L	R624	116-1521-15	1/4W 1.5k ohm
D603	001-7093-91	RFY1112H-16-TR YE	D630	001-7093-91	RFY1112H-16-TR YE	R625	116-1521-15	1/4W 1.5k ohm
		L			L	R626	116-1521-15	1/4W 1.5k ohm
D604	001-7093-91	RFY1112H-16-TR YE	D631	001-7093-91	RFY1112H-16-TR YE	R627	116-1521-15	1/4W 1.5k ohm
		L			L	R635	032-0150-55	1/16W 2.7k ohm F
D605	001-7093-91	RFY1112H-16-TR YE	D632	001-7093-91	RFY1112H-16-TR YE	R636	032-0150-55	1/16W 2.7k ohm F
		L			L	R637	032-0150-55	1/16W 2.7k ohm F
D606	001-7093-91	RFY1112H-16-TR YE	D633	001-7093-91	RFY1112H-16-TR YE	R638	032-0150-55	1/16W 2.7k ohm F
		L			L	R651	032-0140-14	1/10W 1.2k ohm F
D607	001-7093-91	RFY1112H-16-TR YE	D634	001-7093-91	RFY1112H-16-TR YE	SW601	013-6202-52	SKPMBJE010
		L			L	SW602	013-6201-53	SKPMAPE010
D608	001-7093-91	RFY1112H-16-TR YE	D635	001-7093-91	RFY1112H-16-TR YE	SW603	013-6201-53	SKPMAPE010
		L			L	SW604	016-7006-00	ROTARY SW
D609	001-7093-91	RFY1112H-16-TR YE	D636	001-7093-91	RFY1112H-16-TR YE	SW605	016-7006-00	ROTARY SW
		L			L	SW606	013-6202-52	SKPMBJE010
D610	001-7093-91	RFY1112H-16-TR YE	D637	001-7093-91	RFY1112H-16-TR YE	SW607	013-6202-52	SKPMBJE010
		L			L	SW608	013-6202-52	SKPMBJE010
D611	001-7093-91	RFY1112H-16-TR YE	D638	001-7093-91	RFY1112H-16-TR YE	SW609	013-6202-52	SKPMBJE010
		L			L	SW610	013-6202-52	SKPMBJE010
D612	001-7093-91	RFY1112H-16-TR YE	D639	001-7093-91	RFY1112H-16-TR YE	SW611	013-6202-52	SKPMBJE010
		L			L	SW612	013-6201-53	SKPMAPE010
D613	001-7093-91	RFY1112H-16-TR YE	D640	001-7093-91	RFY1112H-16-TR YE	SW613	013-6201-53	SKPMAPE010
		L			L	SW614	013-6201-53	SKPMAPE010
D614	001-7093-91	RFY1112H-16-TR YE	D641	001-7093-91	RFY1112H-16-TR YE	SW615	013-6201-53	SKPMAPE010
		L			L	SW616	013-6202-52	SKPMBJE010
D615	001-7093-91	RFY1112H-16-TR YE	D642	001-7093-91	RFY1112H-16-TR YE	SW617	013-6202-52	SKPMBJE010
		L			L	SW618	013-6202-52	SKPMBJE010
D616	001-7093-91	RFY1112H-16-TR YE	IC601	051-6105-00	LC75818PHT-8561-H	SW619	013-6202-52	SKPMBJE010
		L	J601	075-0395-01	JACK	SW620	013-6202-52	SKPMBJE010
D617	001-7093-91	RFY1112H-16-TR YE	J602	074-3055-26	26P	VR601	001-9210-50	AVR-M1608C270MTA
		L	LC601	379-1455-52	LCD			AD
D618	001-7093-91	RFY1112H-16-TR YE	R601	033-0000-05	1/16W 0 ohm	VR602	001-9210-50	AVR-M1608C270MTA
		L	R602	033-1031-15	1/16W 10k ohm J			AD
D619	001-7093-91	RFY1112H-16-TR YE	R603	116-3321-15	1/4W 3.3k ohm	VR603	001-9210-50	AVR-M1608C270MTA
		L	R604	116-1821-15	1/4W 1.8k ohm			AD
D620	001-7093-91	RFY1112H-16-TR YE	R605	116-3321-15	1/4W 3.3k ohm	VR604	001-9210-50	AVR-M1608C270MTA
		L	R606	116-3321-15	1/4W 3.3k ohm			AD
D621	001-7093-91	RFY1112H-16-TR YE	R607	116-2421-15	1/4W 2.4k ohm	PWB	039-4108-00	PWB(WITHOUT
		L	R608	116-2421-15	1/4W 2.4k ohm			COMPONENTS)
D622	001-7093-91	RFY1112H-16-TR YE	R609	116-2421-15	1/4W 2.4k ohm			
		L	R610	116-5621-15	1/4W 5.6k ohm			

ELECTRICAL PARTS LIST

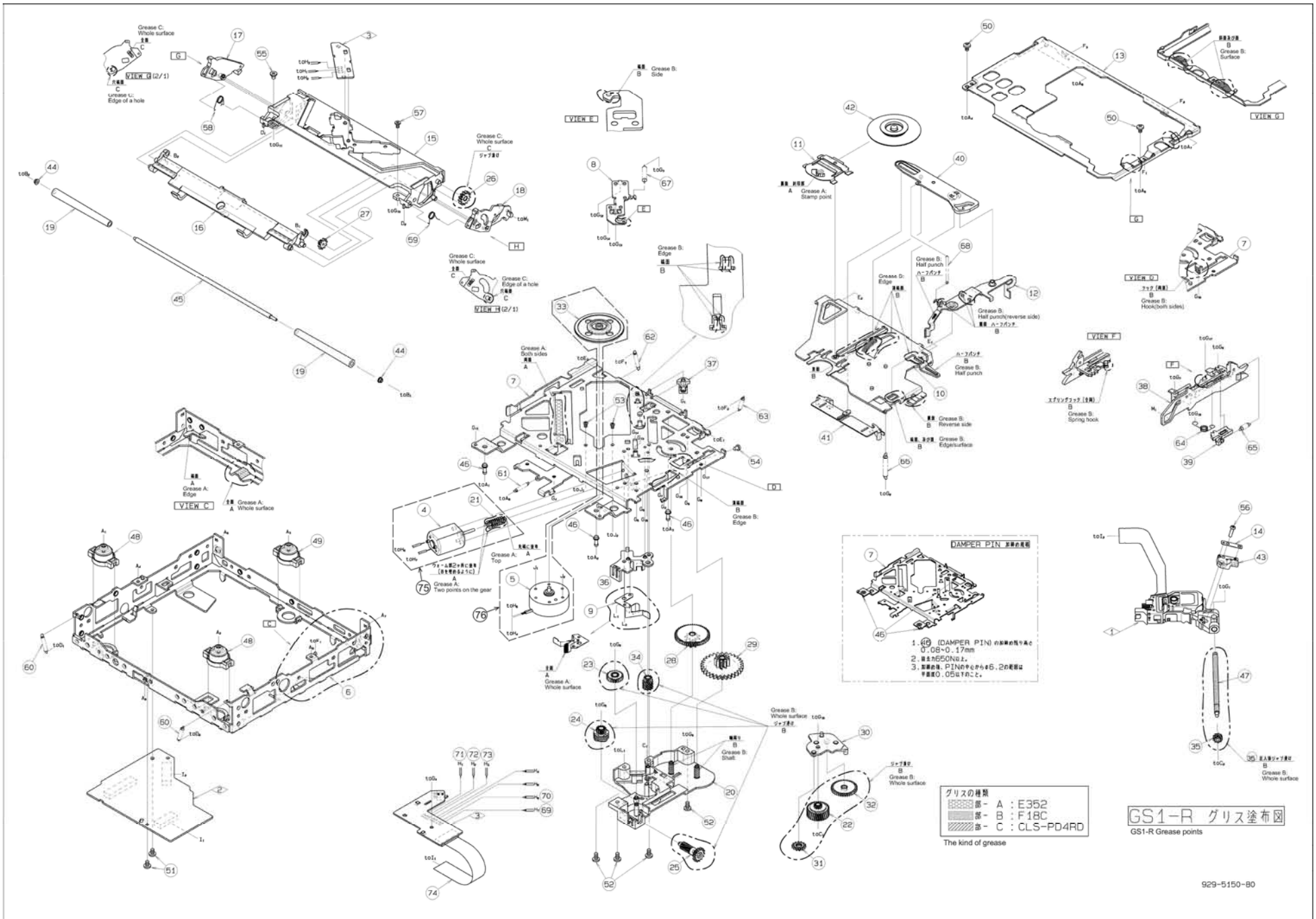
MAIN PWB(B1) section

REF No.	PART No.	DESCRIPTION	REF No.	PART No.	DESCRIPTION	REF No.	PART No.	DESCRIPTION
C2	168-1052-78	16V 1uF K	C51	045-1201-50	12pFJ CH	R17	033-4731-15	1/16W 47k ohm J
C4	046-1042-78	16V 0,1uF	C57	046-1042-78	16V 0,1uF	R18	033-3341-15	1/16W 330k ohm J
C5	168-1052-78	16V 1uF K	C59	165-4763-15	6,3V 47uF	R19	033-0000-05	1/16W 0 ohm
C7	042-0560-85	6,3V 100uF	C62	046-1042-78	16V 0,1uF	R20	033-3331-15	1/16W 33k ohm J
C10	168-1052-78	16V 1uF K	C63	046-1042-78	16V 0,1uF	R21	033-4731-15	1/16W 47k ohm J
C11	046-1042-78	16V 0,1uF	C64	168-1052-78	16V 1uF K	R22	033-1011-15	1/16W 100 ohm J
C12	165-1073-35	16V 100uF	C66	046-1042-78	16V 0,1uF	R27	033-1051-15	1/16W 1M ohm J
C14	046-1042-78	16V 0,1uF	C67	042-0560-85	6,3V 100uF	R28	033-2221-15	1/16W 2,2k ohm J
C15	046-1042-78	16V 0,1uF	C68	046-1042-78	16V 0,1uF	R30	033-3331-15	1/16W 220 ohm J
C17	046-4722-58	4700pF K B	C70	046-1032-78	16V 0,01uF	R32	033-2211-15	1/16W 220 ohm J
C18	046-1042-78	16V 0,1uF	C76	165-4763-15	6,3V 47uF	R35	033-1031-15	1/16W 10k ohm J
C19	046-1042-78	16V 0,1uF	C79	045-1011-50	100pFJ CH	R36	033-2211-15	1/16W 220 ohm J
C20	168-1052-78	16V 1uF K	C80	045-6097-50	6 +/0,5pF CH	R37	033-2211-15	1/16W 220 ohm J
C21	046-1522-58	1500pF K B	D1	001-0367-91	1SS226	R43	033-2211-15	1/16W 220 ohm J
C22	046-1042-78	16V 0,1uF	ET1	073-0792-90	TERMINAL	R45	033-1031-15	1/16W 10k ohm J
C23	046-1532-78	0,015uF K B	IC1	051-6101-90	BD8226EFV	R46	033-2211-15	1/16W 220 ohm J
C25	046-2222-58	2200pF K B	IC2	051-6752-00	TC94A92FG-301	R47	033-2211-15	1/16W 220 ohm J
C26	046-4712-58	470pF K B	IC3	051-3598-90	BU15TA2WHFV	R50	033-1031-15	1/16W 10k ohm J
C27	046-1032-78	16V 0,01uF	IC4	-----	BH433MAWHFV (Regulator) (Bottom pad type) (350990-051)	R51	033-2211-15	1/16W 220 ohm J
C28	046-3332-78	0,033uF K B	J1	074-2215-65	15P	R52	033-2211-15	1/16W 220 ohm J
C29	046-4712-58	470pF K B	J2	074-2504-10	OUTLET SOCKET	R56	033-1031-15	1/16W 10k ohm J
C30	168-1532-55	0,015uF K	J3	074-2259-38	38P	R58	033-1011-15	1/16W 100 ohm J
C31	046-1042-78	16V 0,1uF	L1	010-3105-69	80 ohm/100MHz	R59	033-2211-15	1/16W 220 ohm J
C32	045-4701-50	47pF CH	Q1	190-1365-50	2SA1365 AF,AG	R63	033-1011-15	1/16W 100 ohm J
C33	046-6822-58	6800pF K B	R1	033-2211-15	1/16W 220 ohm J	R65	119-0000-05	1/10W 0 ohm JW
C34	046-1042-78	16V 0,1uF	R2	033-4721-15	1/16W 4,7k ohm J	R66	033-2731-15	1/16W 27k ohm J
C35	045-6801-50	68pFJ CH	R3	033-4721-15	1/16W 4,7k ohm J	R67	033-0000-05	1/16W 0 ohm
C36	046-1042-78	16V 0,1uF	R4	117-1821-15	1/8W 1,8k ohm	R69	119-2201-15	1/10W 22 ohm
C37	046-5622-58	5600pF K B	R5	033-1831-15	1/16W 18k ohm J	R70	119-2201-15	1/10W 22 ohm
C38	046-4732-78	16V 0,047uF	R6	033-1231-15	1/16W 12k ohm J	R72	119-0000-05	1/10W 0 ohm JW
C39	046-4732-78	16V 0,047uF	R7	116-1001-15	1/4W 10 ohm	R73	119-0000-05	1/10W 0 ohm JW
C40	046-1042-78	16V 0,1uF	R8	033-1541-15	1/16W 150k ohm J	R74	119-0000-05	1/10W 0 ohm JW
C41	046-1042-78	16V 0,1uF	R9	033-1031-15	1/16W 10k ohm J	R75	119-0000-05	1/10W 0 ohm JW
C45	046-1042-78	16V 0,1uF	R15	033-2211-15	1/16W 220 ohm J	R81	119-0000-05	1/10W 0 ohm JW
C46	043-0570-90	16V 2,2uF K	R16	033-2231-15	1/16W 22k ohm J	X1	061-3586-90	DSX321G(F) 16,920MHz
C47	046-1042-78	16V 0,1uF				PWB	039-3731-20	PWB(WITHOUT COMPONENTS)
C48	046-1042-78	16V 0,1uF						
C50	045-1201-50	12pFJ CH						

SENSOR PWB(B2) section

REF No.	PART No.	DESCRIPTION	REF No.	PART No.	DESCRIPTION	REF No.	PART No.	DESCRIPTION
D1	001-7138-91	SML-S13RT T86	Q1	060-4025-90	SML-H10TBT86	PWB	039-3732-20	PWB(WITHOUT COMPONENTS)
D2	001-7138-91	SML-S13RT T86	Q2	060-4025-90	SML-H10TBT86			
J1	074-2504-10	OUTLET SOCKET	S2	013-7414-50	SPV220100			

EXPLODED VIEW / PARTS LIST



DAMPER PIN 減速ピン

1. 減速ピン (DAMPER PIN) の全長は約 0.02±0.17mm
 2. 減速ピンは、減速ピンを組立する際に、減速ピンを組立する位置に正確に位置させること。

グリスの種類

■	減速 A	: E352
■	減速 B	: F18C
■	減速 C	: CLS-PD4RD

The kind of grease

GS1-R グリス塗布図
 GS1-R Grease points

NO.	PART NO.	DESCRIPTION	Q'TY	NO.	PART NO.	DESCRIPTION	Q'TY
1	969-0080-30	PICKUP-ASSY	1	39	621-1869-21	RACK	1
2	-----	MAIN-PWB-ASSY(5150BH-97)	1	40	621-1870-21	STOPPER LINK	1
3	-----	SENS-PWB-ASSY(5100BH-95)	1	41	621-1871-21	DISC STOPPER	1
4	-----	DC-MOTOR PWR(154000-020)	1	42	621-1872-21	CLAMPER RING	1
5	-----	DC-MOTOR SPN(154100-020)	1	43	621-1873-21	LS-RACK	1
6	620-1910-21	LOWER CHASSIS	1	44	621-1726-21	ROLLER SLEEVE	2
7	620-1911-20	DRIVE PLATE	1	45	622-1885-20	ROLLER SHAFT	1
8	620-1912-21	ID-LOCK PLATE	1	46	622-1886-20	DAMPER PIN	3
9	620-1913-20	SPRING PLATE	1	47	624-3062-20	LEAD SCREW	1
10	620-1914-21	CLAMPER ARM	1	48	629-0138-21	DAMPER F	2
11	620-1915-22	CLAMPER PLATE	1	49	629-0139-21	DAMPER R	1
12	620-1916-21	SENSOR ARM	1	50	714-2003-8B	MACHIN SCREW	2
13	620-1928-20	UPPER CHASSIS	1	51	716-3718-00	SPECIAL SCREW	2
14	620-1918-21	LS-RACK PLATE	1	52	716-3719-00	SPECIAL SCREW	4
15	621-1845-22	UPPER GUIDE	1	53	716-3720-00	SPECIAL SCREW	2
16	621-1846-22	ROLLER GUIDE	1	54	716-3721-00	SPECIAL SCREW	1
17	621-1847-20	LOCK ARM L	1	55	716-3722-00	SPECIAL SCREW	1
18	621-1848-22	LOCK ARM R	1	56	716-3723-02	SPECIAL-SCREW	1
19	621-1849-20	LOADING ROLLER	2	57	716-3724-00	SPECIAL SCREW	1
20	621-1850-21	GEAR BOX	1	58	750-7924-21	ROLLER SPRING L	1
21	-----	M-GEAR PWR(185121-621)	1	59	750-7925-21	ROLLER SPRING R	1
22	621-1852-20	SECOND GEAR	1	60	750-7926-20	DR-SPRING F	2
23	621-1853-20	ROLLER GEAR A	1	61	750-7927-20	DR-SPRING C	1
24	621-1854-20	ROLLER GEAR B	1	62	750-7928-20	DR-SPRING RA	1
25	621-1855-20	ROLLER GEAR C	1	63	750-7929-20	DR-SPRING RB	1
26	621-1856-20	ROLLER GEAR D	1	64	750-7930-20	SHIFT SPRING	1
27	621-1857-20	ROLLER GEAR E	1	65	750-7931-20	RACK SPRING	1
28	621-1858-20	POWER GEAR A	1	66	750-7932-20	CLAMPER SPRING	1
29	621-1859-20	POWER GEAR B	1	67	750-7933-20	ID-LOCK SPRING	1
30	621-1860-21	IDLE CASE	1	68	750-7934-20	SENSOR SPRING	1
31	621-1861-20	IDLE GEAR A	1	69	803-4906-60	VINYL-COAT-WIRE	1
32	621-1862-20	IDLE GEAR B	1	70	816-2590-00	SPECIAL LEAD	1
33	-----	TURN TABLE(186320-621)	1	71	816-2591-00	SPECIAL LEAD	1
34	621-1864-20	THREAD GEAR A	1	72	816-2592-00	SPECIAL LEAD	1
35	621-1865-20	THREAD GEAR B	1	73	816-2593-00	SPECIAL LEAD	1
36	621-1866-20	LS-HOLDER A	1	74	816-4070-50	FLAT WIRE	1
37	621-1867-20	LS-HOLDER B	1	75	HBS-668-100	POWER MOTOR ASSY	1
38	621-1868-23	SHIFT LEVER	1	76	HBS-669-100	SLED MOTOR ASSY	1