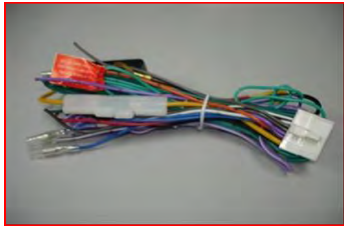

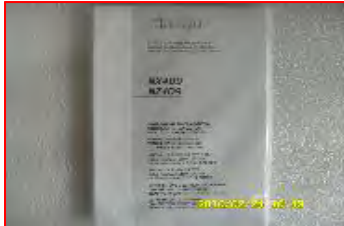

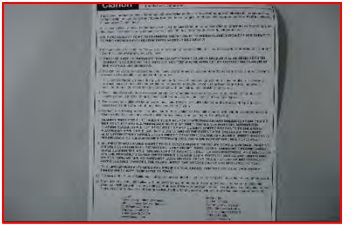












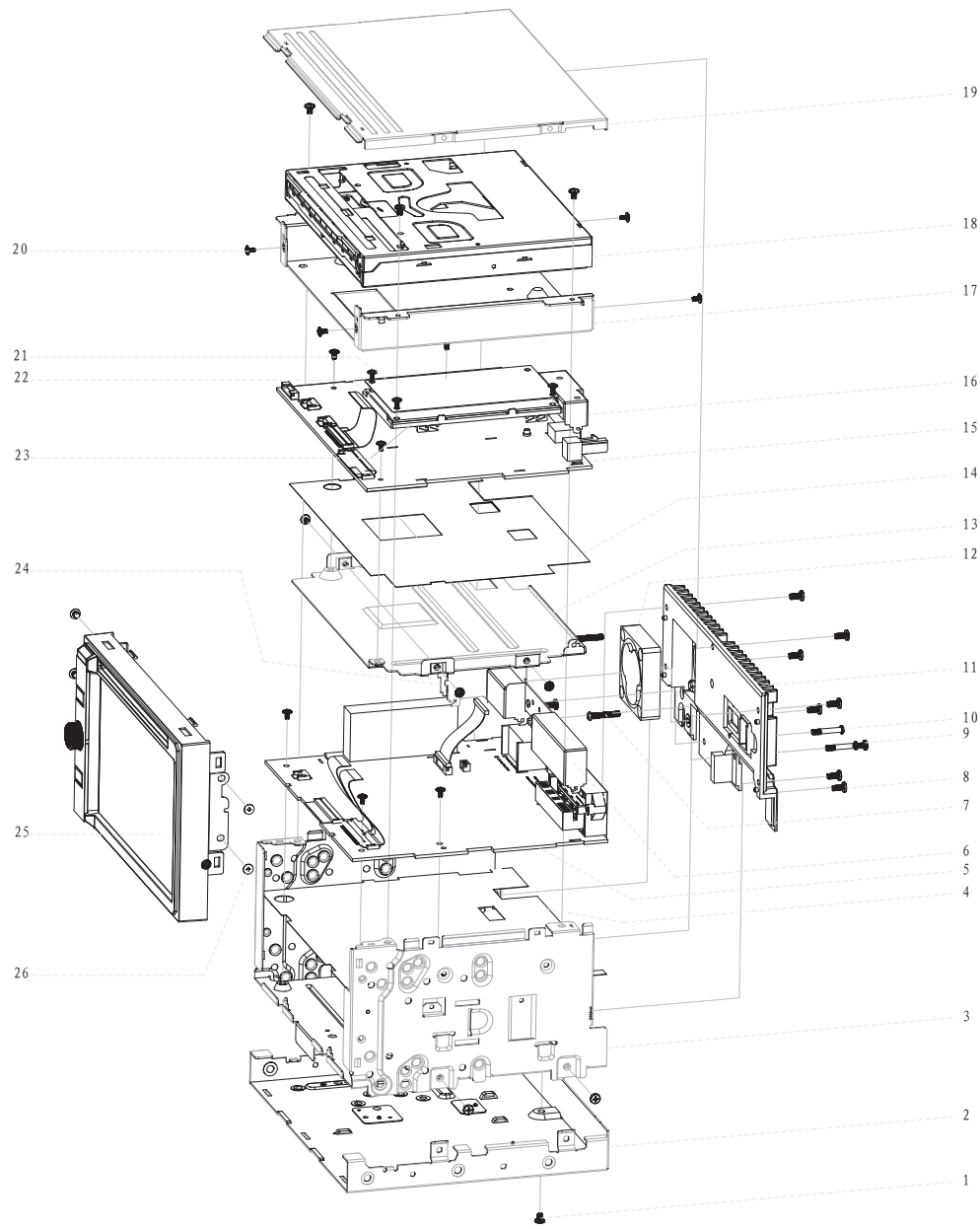
09 Clarion 2DIN AVN Model(NX409) Accessory List:

No.	Part Name	QTY	Picture	Part No.
1	SMK wiring harness	1		3WZ1X00101800
2	Remote Control	1		3ZREM170027R2
3	User Manual	1		7982085010000
4	Navi Antenna	1		3Z800GPS00802
5	Back Strap	1		1265120230000
6	4 flush mount bolts 4 cap bolts Rear radio stud and stopper	1		726518024000A

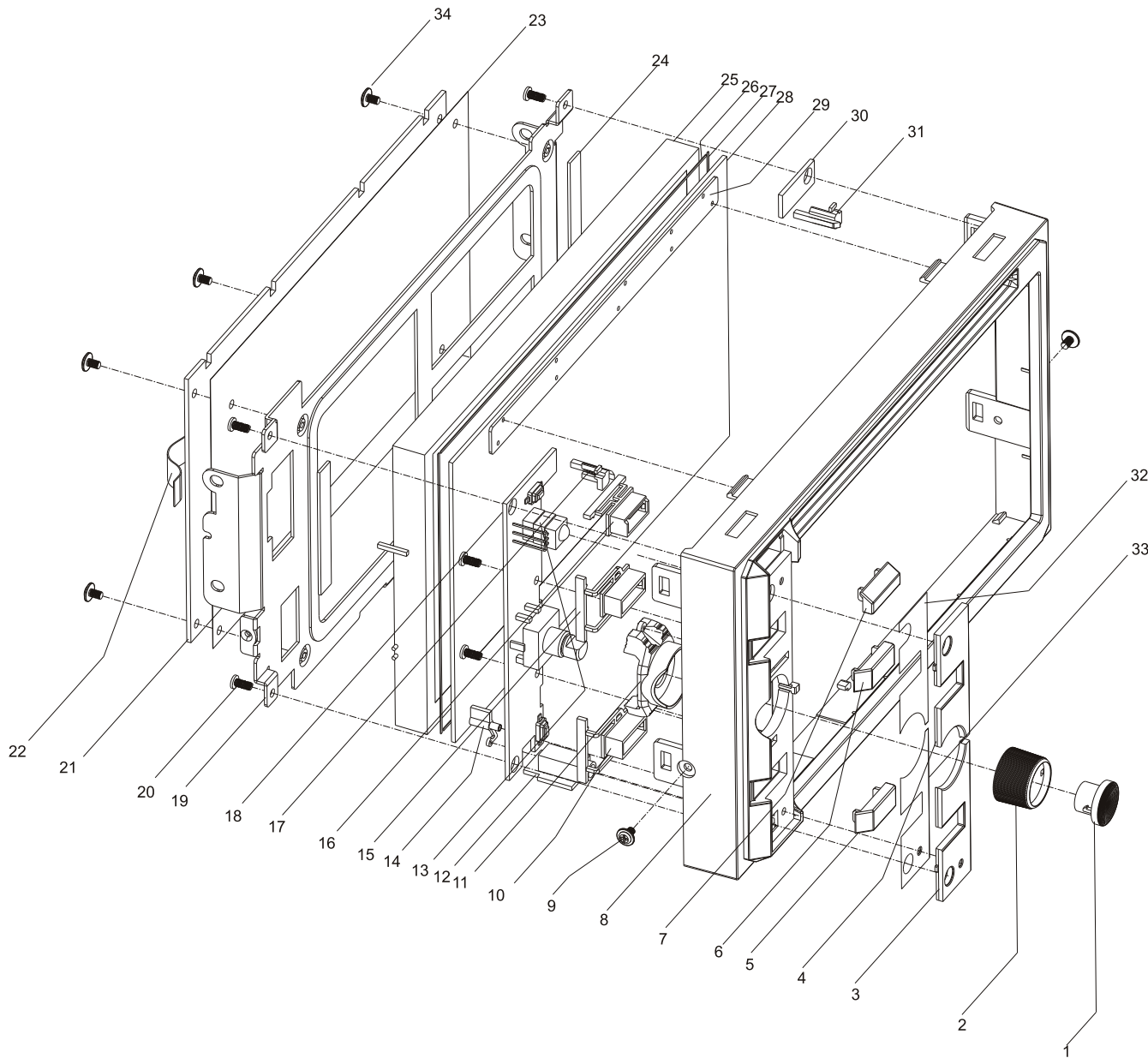
7	Cleaning cloth	1		7265180150000
8	Warranty Card	1		7982080880000
9	Trim ring 1--- thin	1		1982035180001
10	Trim ring 2--- thick	1		1982035170001
11	SWRC	1		3WZ2X00900000
12	USB extend cable	1		3WZ2X01000401
13	interface For Sirius	1		3WZ2X00870001

14	3.5 Jack AV IN cable	1		3WZAH18000900
15	Aux in +video in	1		3WZ2H01170601
16	Bluetooth audio cable	1		3WZ2X00890000
17	6CH cables	1		3WZ2H01181001
18	video out cable	1		3WZ2H01160801

EXPLODED VIEW



26	1-2701-6013-00-01	SCREW	4
25	3-PTPW-065X-S1-00	PANEL-ASS	1
24	B-9820-1001-00-00	SHIELD-COVER	1
23	1-9680-2307-01-00	NAVI-PCB-BKT	1
22	3-B383-0557-R4-00	NAVI-PCB	1
21	1-9850-2214-00-00	GUIDE-HEAT-PLATE	1
20	1-2651-6009-00-04	SCREW	18
19	1-9820-2505-00-00	TOP-COVER	1
18	C-5175-000A-00-00	CORE	1
17	1-9820-2502-00-00	CORE-BKT	1
16	1-9820-2504-00-00	SOCKET-BKT	1
15	3-B345-0562-R5-00	MAIN-PCB	1
14	1-9820-8022-00-00	SHEET-PC_4	1
13	1-9820-2506-00-00	MIDDLE-BKT	1
12	3-MF40-J12A-00-00	FAN	1
11	1-9820-7501-RX-00	HEAT-SINK	1
10	1-2701-6019-00-01	SCREW	2
9	1-2652-6001-00-00	SCREW	2
8	1-2651-6010-01-01	SREW	6
7	1-2620-6001-00-00	SREW	2
6	1-9820-2503-00-00	AMP-BKT	1
5	3-B345-0563-R5-00	AMP-PCB	1
4	1-2820-8005-00-00	SHEET-PC_4	1
3	1-9820-2507-00-00	MAIN-CHASSIC	1
2	1-2820-2006-00-00	BOTTOM-BKT	1
1	1-2701-6012-00-04	SCREW	9
NO.	PART NO.	DESCRIPTION	QTY



34	1-2651-6007-00-02	SCREW	4
33	1-9820-8025-00-00	DOUBLE-FACE-GLUE	1
32	1-9820-8024-00-00	DOUBLE-FACE-GLUE	1
31	1-9820-3507-00-00	DISK_LIGHT	1
30	3-B324-0565-R5-00	SLOT-LED-PCB	1
29	1-9820-8028-00-00	PROOF-DUST	1
28	3-PIT0-0867-00-00	TOUCH-SCREEN	1
27	1-2820-8004-00-00	SCREEN-CUSHION-2	2
26	1-2820-8003-00-00	SCREEN-CUSHION-1	2
25	3-PTPW-065X-S1-00	SCREEN	1
24	1-2942-8007-00-00	EVA-CUSHION	2
23	1-9820-8012-00-00	INSULATION-SHEET	1
22	3-WF0X-0021-20-00	FFC	1
21	3-B343-0669-R4-00	TFT-PCB	1
20	1-2942-6003-01-00	SCREW	5
19	1-9820-2501-00-00	TFT-BKT	1
18	3-B324-0565-R5-00	KEY-PCB	1
17	1-9820-3516-00-00	DISK_LIGHT	1
16	1-9820-3508-00-00	KEY_ARM_UPPER	1
15	1-9820-3509-00-00	KEY_ARM_MID	1
14	1-9820-3513-00-00	RESET-KEY	1
13	1-2680-8002-00-00	REMOTE-MAT	2
12	3-B324-0565-R5-00	AUX_IN_PCB	1
11	1-9820-3506-00-00	LIGHT_GUIDE	1
10	1-9820-3510-00-00	KEY_ARM_DOWN	1
9	1-2651-6009-00-04	SCREW	2
8	1-9820-3501-00-01	PANEL	1
7	1-9820-3502-00-01	KEY_COVER_UPPER	1
6	1-9820-3503-00-01	KEY_COVER_MID	1
5	1-9820-3504-00-02	KEY_COVER_DOWN	1
4	1-9820-3512-00-01	DEC_MIRRIOR_DOWN	1
3	1-9820-3511-00-01	DEC_MIRRIOR_UPPER	1
2	1-9820-3505-00-01	KNOB	1
1	1-9820-3514-00-00	KNOB_COVER	1
NO.	PART NO.	DESCRIPTION	QTY

■ ELECTRICAL PARTS LIST

NO.	PART NO.	REFERENCE	QT	NO.	PART NO.	REFERENCE	QT	NO.	PART NO.	REFERENCE	QT
1	3-CC35-0101-30-0S	C102 C107 C110 C56 C57	3	18	3-CC57-04U7-5X-0S	C185 C186	2	52	3-LA30-222R-00-1S	FB206 FB207 FB208 FB209	4
2	3-CC35-0102-4X-0S	C101 C104 C111 C220 C221 TC207	6	19	3-CE32-0107-52-MS	C174 TC31 TC43 TC87 TC204 TC206 TC208 TC210 TC306	9	53	3-LA30-252R-00-1S	FB210 FB211 FB213 FB214	4
3	3-CC35-0103-4X-0S	BC6 BC201 BC202 BC203 BC204 BC205 BC206 BC207 BC208 BC209 BC210 BC211 BC212 BC213 BC214 BC215 BC216 BC217 BC301 BC302 BC303 BC304 BC305 BC306 BC307 C5 C31 C175 C188 C230 C231 C281 C388 C422 C432 C433 TC48 TC205 TC307 TC211	40	20	3-CES2-0108-52-RS	TC26	1	54	3-LA30-601R-G0-0S	FB1 FB13 FB14 FB22 FB23 FB26 FB32 FB38 FB50 FB65 FB68 FB73 FB83 FB94 FB95 FB96 FB97 FB98 FB99 FB110 FB111 FB112 FB113 FB124 FB128 FB129 FB130 FB138 FB143 FB147 FB148 FB151 FB168 FB169 FB192 FB193 FB226 FB227 FB228 FB236 FB238 FB2 FB27 FB177 FB178 FB179 FB180	47
				21	3-CES2-0227-52-0S	TC8 TC29 TC6 TC9 TC11 TC12 TC13 TC14 TC33 TC38 TC47 TC76 TC102 TC201	14				
				22	3-CES5-0107-52-0S	TC5 TC2 TC4	3				
				23	3-CES5-0108-52-0N	TC24	1				
				24	3-CES5-0476-52-0S	TC99 TC100 TC101	3				
				25	3-Z800-0LEA-5S-00	IC22	1				
				26	3-CTB2-0476-54-0S	C113 TC1 TC15 TC71 TC22 TC555 TC556	7				
				27	3-CTB5-0106-54-0S	TC23	1				
4	3-CC35-0104-4X-0S	BC1 BC2 BC3 BC4 BC218 C7 C9 C11 C12 C16 C17 C21 C32 C38 C43 C90 C105 C112 C114 C115 C116 C138 C139 C152 C153 C158 C160 C161 C162 C163 C164 C165 C166 C167 C168 C169 C183 C184 C189 C191 C218 C222 C275 C276 C277 C278 C279 C280 C401 C427 C434 C436 C438 C442 C474 C503 C504 C589 C651 TC28 TC49 TC304 TC305	64	28	3-CTC2-0107-54-0S	TC10	1	55	3-LA5X-026R-00-1S	FB216 FB314	2
				29	3-DKA0-4148-00-0S	D7 D10 D11 D31 D32 D33 D38 D39 D40	9	56	3-LA5X-601R-G0-0S	FB85	1
				30	3-DRB0-4001-00-0S	D46	1	57	3-LA6X-060R-00-0S	CNH1 FB42 FB43 FB45 FB4 FB10 FB181 FB215 FB218 FB182	10
				31	3-DRB0-4004-00-0S	D1 D2	2				
				32	3-DRX0-SK34-00-0S	D9	1	58	3-Q0BT-2907-0P-6S	Q555 Q556	2
				33	3-DZA3-0012-00-0S	ZD40	1	59	3-Q0KR-C402-0N-6S	Q61 Q62	2
				34	3-J102-0125-07-30	CON2	1	60	3-QKTD-1624-0N-6S	Q60	1
				35	3-J115-0125-07-30	CON1	1	61	3-QMBT-3904-0N-6S	Q1 Q2 Q3 Q6 Q7 Q8 Q10 Q11 Q13 Q15 Q42 Q201 Q202	13
				36	3-J180-00R8-08-20	CON10	1	62	3-QMBT-3906-0P-6S	Q4 Q70 Q71	3
				37	3-J330-SMBA-08-10	ANT2	1	63	3-RS31-0000-J0-0S	R11 R12 R19 R21 R35 R36 R41 R42 R64 R87 R99 R109 R110 R111 R112 R113 R114 R120 R135 R138 R160 R162 R163 R236 R239 R283 R284 R298 R309 R334 R335 R363 R370 R372 R374 R508 R509 R559 R561 R578	40
38	3-JF32-00R5-02-31	CON6 CON7	2								
39	3-JF52-00R5-02-30	J403	1								
40	3-JU04-F090-07-10	CON16	1								
41	3-L25X-0100-K0-0S	L51	1								
42	3-L25X-01L1-K0-0S	L201 L202 L203 L204	4								
43	3-L4S0-0101-CD-43	L1	1								
44	3-L4S0-0101-CD-54	L10	1								
45	3-L4S0-0150-H1-29	L8	1	64	3-RS31-001K-J0-0S	R5 R14 R18 R134 R201 R353 R414 R415 R416 R462 R463 R464 R465 R466 R467 R539 R580	17				
46	3-L7XX-1420-EE-0S	ACCOM1	1	65	3-RS31-002K-J0-0S	R207 R208	2				
47	3-L8SX-0100-K0-0S	L5 L7403	2	66	3-RS31-010K-F0-0S	R76 R84	2				
48	3-L8SX-0101-K0-0S	L3 L11 L18	3	67	3-RS31-010K-J0-0S	R15 R108 R157 R158 R159 R172 R173 R210 R212 R213 R293 R311 R312 R316 R319 R577 R794 R988	18				
49	3-L8SX-0470-K0-0S	L30 L31	2								
50	3-L27X-0470-K0-0S	FB212	1								
17	3-CC52-0226-44-0S	BC5 C25 C182 C198 C199	5	51	3-LA30-182R-00-1S	FB217	1	68	3-RS31-010R-J0-0S	R142 R354	2

NO.	PART NO.	REFERENCE	QT
69	3-RS31-011K-J0-0S	R74 R75 R89	3
70	3-RS31-012K-J0-0S	R171	1
71	3-RS31-015K-J0-0S	BC9 BC10	2
72	3-RS31-020K-J0-0S	R7434 R7435 R7436	3
73	3-RS31-022K-J0-0S	R92	1
74	3-RS31-022R-J0-0S	R165 R168	2
75	3-RS31-024K-J0-0S	R198	1
76	3-RS31-027K-J0-0S	R71 R81	2
77	3-RS31-030K-J0-0S	R22	1
78	3-RS31-033K-J0-0S	R325	1
79	3-RS31-033R-F0-0S	R238	1
80	3-RS31-033R-J0-0S	R3 R4 R88 R234 R604	5
81	3-RS31-030K-F0-0S	R196	1
82	3-RS31-039K-F0-0S	R194	1
83	3-RS31-047K-J0-0S	R72 R117 R286 R995	4
84	3-RS31-04K7-J0-0S	R1 R6 R7 R8 R31 R33 R39 R45 R48 R51 R52 R53 R118 R125 R203 R204 R305 R538 R543	19
85	3-RS31-04R3-F0-0S	R144 R244	2
86	3-RS31-056R-J0-0S	R240	1
87	3-RS31-05K6-J0-0S	R513 R514 R557	3
88	3-RS31-06K8-J0-0S	R106	1
89	3-RS31-075R-F0-0S	R2 R214 R218 R219 R220 R221 R222 R223 R224 R225	10
90	3-RS31-091R-J0-0S	R247 R248	2
91	3-RS31-100K-F0-0S	R195	1
92	3-RS31-100K-J0-0S	R13 R91 R116 R164 R191	5
93	3-RS31-100R-J0-0S	R9 R10 R20 R736 R739 R869 R870 R987 R7433 D18	10
94	3-RS31-15K4-F0-0S	R228	1
95	3-RS31-160K-F0-0S	R197	1
96	3-RS31-220K-J0-0S	R215	1
97	3-RS31-220R-F0-0S	R242 R246	2
98	3-RS31-220R-J0-0S	R59 R90	2
99	3-RS31-392R-F0-0S	R226	1
100	3-RS31-470R-F0-0S	R79 R80	2

NO.	PART NO.	REFERENCE	QT
101	3-RS31-470R-J0-0S	R17 R7430 R7431 R7432	4
102	3-RS52-0000-J0-0S	FB315	1
103	3-RS52-001K-J0-0S	R43	1
104	3-RS52-001R-J0-0S	R77 R78 R82 R83 R85 R86	6
105	3-RS52-010R-J0-0S	R558	1
106	3-RS63-0000-J0-0S	L2 R520	2
107	3-RS63-04R7-J0-0S	R209	1
108	3-RS63-100R-J0-0S	R133 R654 R137 R199 R655	5
109	3-CC35-0080-80-0S	BC11	1
110	3-DZA3-04V7-00-0S	ZD1	1
111	3-U00D-5954-00-XS	U6	1
112	3-U00D-6849-00-XS	U7	1
113	3-U0BA-6289-FE-9S	U401	1
114	3-U0BA-7603-F0-9S	U7402	1
115	3-U0BU-9451-KV-XS	IC17	1
116	3-U0LD-1117-18-XS	U19	1
117	3-USE8-1117-33-DS	U16	1
118	3-U0LD-1117-33-XS	U20	1
119	3-U0MP-4461-00-XS	MPS1	1
120	3-U0RT-9193-15-DS	U18	1
121	3-U0WM-8501-00-XS	U11	1
122	3-U0WM-8522-00-AS	IC1	1
123	3-U0XC-6401-37-0S	IC60	1
124	3-U57V-6416-20-RS	U3	1
125	3-UAT2-4C16-00-9S	U2	1
126	3-UFSU-SB30-00-XS	IC2 IC3 IC9	3
127	3-UMFI-2162-00-0S	IC48	1
128	3-US29-AL01-6D-XS	IC14	1
129	3-USST-39VF-16-0S	U4	1
130	3-UZR3-6966-U0-CS	U1	1
131	3-XQ0X-027M-00-2S	Y1	1
132	3-XQ0X-24M5-76-6S	X3	1
133	3-XQ0X-33M8-68-6S	X1	1
134	3-LCCM-2012-2P-0S	U8	1

NO.	PART NO.	DESCRIPTION	REFERENCE	QTY
2	3-CC35-0102-4X-0S	CHIP CAP	C4	1
3	3-CC35-0104-4X-0S	CHIP CAP	C1 C2 C8 C37	4
4	3-CC43-0106-6Y-0S	CHIP CAP	C3	1
5	3-DED0-0RED-0S-0S	LED	D16 D19 D20 D21	4
6	3-DED0-BLUE-01-0S	LED	D2 D3 D4 D5 D6 D7 D8 D9 D10 D11 D12 D23	12
7	3-DED0-WHIT-01-0S	LED	D1 D24	2
8	3-DZA3-05V6-00-0S	ZENER	ZD1	1
9	3-J104-0100-08-20	SOCKET	CON2	1
10	3-JCEJ-3524-10-00	AUX-SOCKET	J1	1
11	3-JF20-00R5-02-30	FFC CON.	CON1	1
12	3-KEEC-11EC-07-10	ENCODER SW	EN3	1
13	3-KTTS-03MB-S0-SS	TACT SW	SW3 SW4 SW5 SW19	4
14	3-L8SX-0100-K0-0S	WIRE WIND IND.	L1	1
15	3-QMBT-3904-0N-6S	TRAN	Q5 Q6 Q1201	3
16	3-RS31-0000-J0-0S	CHIP RES	R33 R85	2
17	3-RS31-470R-F0-0S	CHIP RES	R2 R4 R5 R6 R7 R9 R68 R72 R76 R77	10
18	3-RS31-330R-F0-0S	CHIP RES	R1 R3 R21 R30	4
19	3-RS31-001K-J0-0S	CHIP RES	R63 R95 R1290	3
20	3-RS31-001K-F0-0S	CHIP RES	R31 R94	2
21	3-RS31-002K-F0-0S	CHIP RES	R35	1
22	3-RS31-002K-J0-0S	CHIP RES	R97	1
23	3-RS31-04K7-J0-0S	CHIP RES	R8 R61	2
24	3-RS31-470R-J0-0S	CHIP RES	R10 R67	2
25	3-RS31-270R-F0-0S	CHIP RES	R62 R64 R11	3
25	3-URPM-6938-00-20	IR RECEIVER	U1201	1
26	3-W01H-0005-04-00	fhone connec+wire		1
27	3-W02X-0031-04-00	BAR-CON		1
28	3-WF0X-0021-20-00	FFC-WIRE		1
29	3-CC35-0100-30-0S	CHIP CAP	C65 C13	2

NO.	PART NO.	DESCRIPTION	REFERENCE	QTY
30	3-CC35-0102-4X-0S	CHIP CAP	R393 R553 R439	3
31	3-CC35-0103-4X-0S	CHIP CAP	C2 C50 C51 C56 C63 C70 C83 C85 C86 C96 C97 C98 C105 C155 C159 C192 194 C533 C17 C18 C117 C119 C120 C126 C132 C133 C36 C37 C121 C125 C152 C193	32
32	3-CC35-0104-4X-0S	CHIP CAP	C1 C8 C29 C30 C48 C67 C99 C106 C123 C145 C169 C185 C190 C196 C213 C260 C313 C314 C393 C396 C496	21
33	3-CC35-0121-30-0S	CHIP CAP	C100 C101 C102 C103	4
34	3-CC35-0150-30-0S	CHIP CAP	C19 C81 C87 C113 C118 C127 C134 C136 C137 C138 C139 C140 C141	13
35	3-CC35-0152-4X-0S	CHIP CAP	C40 C41 C64 C66	4
36	3-CC35-0220-80-0S	CHIP CAP	C58 C59 C146 C149 C166 C167	6
37	3-CC35-0333-4X-0S	CHIP CAP	C60 C61	2
38	3-CC35-0222-4X-0S	CHIP CAP	C10	1
39	3-CC35-0474-6Y-0S	CHIP CAP	C9 C11	2
40	3-CC35-0681-30-0S	CHIP CAP	C7	1
41	3-CC35-0822-4X-0S	CHIP CAP	C38 C39	2
42	3-CC38-0105-4X-0S	CHIP CAP	C3 C14 C15 C16 C20 C21 C22 C24 C25 C26 C28 C42 C45 C46 C47 C49 C53 C54 C69 C90 C91 C92 C93 C95 C104 C107 C109 C124 C129 C130 C144 C156 C168 C172 C173 C174 C175 C176 C254 C415 C453 C454	42
43	3-CC43-0106-6Y-0S	CHIP CAP	C5 C23 C27 C43 C44 C52 C62 C68 C89 C94 C108 C147 C148 C157 C158 C163 C164 C165 C182 C183 C184 C186 C187 C188 C189 C191 C195 C198 C199 C200 C201 C202	32
44	3-CC43-0475-44-0S	chip cap	C6 C122 C151 C310 C394 C395	6
45	3-CTA5-0106-54-0S	CHIP TAN CAP	TC1 TC2 TC4 TC6	4
46	3-CC67-0226-6Y-0S	CHIP CAP	C197	1

NO.	PART NO.	DESCRIPTION	REFERENCE	QTY
47	3-CES5-0476-52-0S	SMT E-CAP	TC39	1
48	3-CES9-0105-52-0S	SMT E-CAP	TC469	1
49	3-CES9-0335-52-0S	SMT E-CAP	TC496	1
50	3-CES9-0474-52-0S	SMT E-CAP	TC35	1
51	3-DKA0-4148-00-0S	SW DIODE	D1 D4 D5 D6 D7 D8 D9 D11 D12 D13 D14 D16 D17 D18 D19 D21 D22 D23 D24 D25 D26 D27 D30 D31 D32 D35 D39 D42 D43 D48 D53	31
52	3-DRB0-4001-00-0S	REC DIODE	D20	1
53	3-DRB0-4004-00-0S	REC DIODE	D487 D488 D5203 D5205	4
54	3-DRX0-5404-00-0S	REC DIODE	D10 D15	2
55	3-DZA3-0010-00-0S	ZENER	ZD2 ZD3 ZD4 ZD5 ZD6 ZD7 ZD13 ZD14 ZD15 ZD21 ZD22 ZD43 ZD44 ZD45	14
56	3-DZA3-0018-00-0S	ZENER	ZD33	1
57	3-DZA3-05V1-00-0S	ZENER	ZD1	1
58	3-DZA3-05V6-00-0S	ZENER	ZD12	1
59	3-DZA3-06V8-00-0S	ZENER	ZD8 ZD9 ZD10 ZD17 ZD18 ZD19 ZD20 ZD27	8
60	3-F300-01A5-02-0S	FUSE	FU1 FU4	2
61	3-F300-0A75-03-0S	FUSE	FU2 FU5 FU6	3
62	3-J115-0125-07-30	SOCKET	CON1	1
63	3-JF07-00R5-02-30	FFC CON.	J1	1
64	3-JF32-00R5-02-31	SOCKET	CON18 CON19	2
65	3-JF52-00R5-02-31	FPC-	CON2	1
66	3-L85X-0150-K0-0S	WIRE WIND IND.	L3 L8 L45	3
67	3-L8SX-0100-K0-0S	WIRE WIND IND.	L42	1
68	3-L8SX-0150-K0-0S	WIRE WIND IND.	L23	1
69	3-LA30-601R-G0-0S	CHIP BEAD	FB38 FB39 FB44 FB45 FB46 FB47 FB53 FB54 FB62 FB63 FB64 FB65 FB66 FB67 FB68 FB69 FB70 FB71 FB75 FB93 FB198	21
70	3-Q0KR-A304-0P-6S	TRAN	Q27 Q35 Q42 Q43 Q44 Q45	6
71	3-Q0KR-C402-0N-6S	TRAN	Q23 Q24	2
72	3-Q2SA-1718-0P-6S	TRAN	Q465 Q5212	2
73	3-Q2SC-2020-0N-6S	TRAN	Q37	1

NO.	PART NO.	DESCRIPTION	REFERENCE	QTY
74	3-QDTC-314T-0N-6S	TRANSISTOR	Q2 Q8 Q9 Q10 Q17 Q18	6
75	3-QIRF-7205-PM-6S	MOSFET	IC18	1
76	3-QMBT-3904-0N-6S	TRAN	Q3 Q6 Q7 Q11 Q12 Q13 Q21 Q25 Q28 Q30 Q31 Q32 Q33 Q34 Q38 Q41 Q49 Q53 Q54 Q55 Q56 Q64 Q70 Q71	24
77	3-QMBT-3906-0P-6S	TRAN	Q1 Q4 Q14 Q29 Q36 Q51 Q63	7
78	3-RS31-0000-J0-0S	CHIP RES	R26 R74 R75 R80 R98 R107 R109 R126 R266 R269 R305 R308 R350 R441 R504 R549 R623 R624 R781 R842 R113 R114 R631	23
79	3-RS31-001K-F0-0S	CHIP RES	R153 R154 R155 R156 R157 R423 R424 R551 R552	9
80	3-RS31-001K-J0-0S	CHIP RES	R5 R10 R16 R17 R23 R36 R37 R56 R62 R117 R118 R150 R205 R206 R213 R214 R216 R224 R226 R228 R284 R285 R287 R291 R295 R306 R314 R315 R316 R317 R318 R321 R326 R342 R344 R348 R349 R395 R485 R487 R489 R562 R664 R688 R782 R935	46
81	3-RS31-001M-J0-0S	CHIP RES	R265	1
82	3-RS31-010K-F0-0S	CHIP RES	R195 R687	2
83	3-RS31-010K-J0-0S	CHIP RES	R30 R31 R41 R64 R76 R94 R97 R104 R111 R112 R115 R127 R132 R133 R141 R168 R169 R171 R172 R173 R175 R203 R204 R222 R223 R252 R275 R299 R330 R359 R369 R422 R490 R493 R499 R500 R501 R521 R522	39
84	3-RS31-015K-F0-0S	CHIP RES	R312	1
85	3-RS31-01K8-F0-0S	CHIP RES	R66 R67 R68 R69	4
86	3-RS31-01K2-F0-0S	CHIP RES	R65	1
87	3-RS31-018K-J0-0S	CHIP RES	R22	1
88	3-RS31-020K-F0-0S	CHIP RES	R340 R430 R438 R440 R548 R550	6
89	3-RS31-020K-J0-0S	CHIP RES	R8 R11 R100 R179 R200 R277 R338 R362 R420 R421 R502	11

NO.	PART NO.	DESCRIPTION	REFERENCE	QTY
90	3-RS31-022K-J0-0S	CHIP RES	R319 R323 R327 R346 R517 R518 R519 R686 R496	9
91	3-RS31-027K-F0-0S	CHIP RES	R197	1
92	3-RS31-027K-J0-0S	CHIP RES	R272	1
93	3-RS31-02K2-J0-0S	CHIP RES	R33 R158 R159	3
94	3-RS31-030K-J0-0S	CHIP RES	R343 R455	2
95	3-RS31-033K-J0-0S	CHIP RES	R143 R144 R198 R199 R210 R293 R320 R345	8
96	3-RS31-033R-J0-0S	CHIP RES	R324 R716 R717	3
97	3-RS31-039K-F0-0S	CHIP RES	R311	1
98	3-RS31-03K3-J0-0S	CHIP RES	R14	1
99	3-RS31-03K9-J0-0S	CHIP RES	R2 R99 R102 R103	4
100	3-RS31-047K-J0-0S	CHIP RES	R21 R85 R92 R93 R95 R273 R296 R297 R298 R503	10
101	3-RS31-04K3-J0-0S	CHIP RES	R613 R614	2
102	3-RS31-04K7-J0-0S	CHIP RES	R12 R86 R87 R96 R110 R176 R192 R232 R246 R271 R335 R406 R411 R454 R467 R468 R469 R470 R471 R472 R524 R533 R544 R779 R780	25
103	3-RS31-051K-F0-0S	CHIP RES	R81 R82 R83 R84	4
104	3-RS31-05K6-J0-0S	CHIP RES	R339	1
105	3-RS31-06K2-J0-0S	CHIP RES	R351 R360	2
106	3-RS31-075R-J0-0S	CHIP RES	R3 R7 R28 R35 R39 R70 R264 R283 R391 R392 R403 R404 R405 R407 R408 R409 R419 R625 R626 R627 FB17	21
107	3-RS31-100K-J0-0S	CHIP RES	R19 R34 R88 R89 R90 R91 R121 R122 R270	9
108	3-RS31-100R-J0-0S	CHIP RES	R57 R58 R142 R202 R300 R301 R377 R378 R379 R380 R381 R382	12
109	3-RS31-180K-J0-0S	CHIP RES	R185 R231 R245	3
110	3-RS31-220K-J0-0S	CHIP RES	R20	1
111	3-RS31-300R-J0-0S	CHIP RES	R130 R138 R167 R196 R443 R545	6
112	3-RS31-330K-J0-0S	CHIP RES	R510	1
113	3-RS31-330R-J0-0S	CHIP RES	R119 R120	2
114	3-RS63-0000-J0-0S	CHIP RES	R523	1
115	3-RS63-001K-J0-0S	CHIP RES	R180 R274 R276 R431	4
116	3-RS63-010K-J0-0S	CHIP RES	R9	1

NO.	PART NO.	DESCRIPTION	REFERENCE	QTY
117	3-RS63-039K-J0-0S	CHIP RES	R354 R361	2
118	3-RS63-04K7-J0-0S	CHIP RES	R237 R449	2
119	3-RS63-04R7-J0-0S	CHIP RES	R201 R209 R215	3
120	3-RS63-100K-F0-0S	CHIP RES	R193	1
121	3-RS63-470R-J0-0S	CHIP RES	R310	1
122	3-U0AD-8092-00-9S	AMPLIFIER	IC39 U304	2
123	3-U0BA-3121-F0-9S	INSULATE OP	IC2 IC3 IC13 IC15	4
124	3-U0BA-7071-00-9S	SYNC SEPARATE	IC19	1
125	3-U0LP-2950-00-9S	IC	IC16	1
126	3-U0TL-431A-00-0S	BASE SOURCE	ZD25	1
127	3-U4HC-4052-PW-BS	ELEC SW	IC5 IC14	2
128	3-U4HC-4094-PW-BS	SHIFT REG	IC23 IC29 IC46	3
129	3-UFMS-6501-00-AS	VIDEO SWITCH MATRIX	IC45	1
130	3-UNJM-2792-00-AS	IC	U2 U3	2
131	3-USTM-8AF5-CY-XS	MCU	IC21	1
132	3-UTDA-7419-00-XS	ASP IC	IC305	1
133	3-XQ05-008M-00-3S	CRYSTAL	Y4	1
134	3-CE12-0227-52-00	INSERT E-CAP	TC52 TC85	2
135	3-CE12-0476-52-00	INSERT E-CAP	TC58	1
136	3-CE12-0108-52-00	Insert E-cap	TC56	1
137	3-CE15-0107-52-00	INSERT E-CAP	TC5 TC7 TC27 TC28 TC57 TC77 TC103	7
138	3-CE15-0108-52-00	Insert E-cap	TC98	1
139	3-CE15-0227-52-00	INSERT E-CAP	TC9 TC19 TC67 TC68 TC123 TC124	6
140	3-CE15-0476-52-00	INSERT E-CAP	TC3 TC8 TC11 TC21 TC69 TC75 TC82 TC101 TC125	9
141	3-CE16-0688-52-00	INSERT E-CAP	TC38 TC419	2
142	3-CE17-0228-52-00	INSERT E-CAP	TC16	1
143	3-L817-0101-J0-00	INSERET WIND	L4 L5 L6 L9 L10 L26	6
144	3-J166-0200-00-01	66PIN-JACK	CON101	1
145	3-J218-5018-52-00	PLUG	CON27	1
146	3-JEST-T100-00-10	Antenna Socket	ANT	1
147	3-M300-H400-00-I0	Buzzer	BUZ	1
148	3-UTDA-7388-00-70	POWER AMP	IC1	1
149	3-Z2TC-TL26-CR-R0	Tuner	FM/AM_TUNER	1