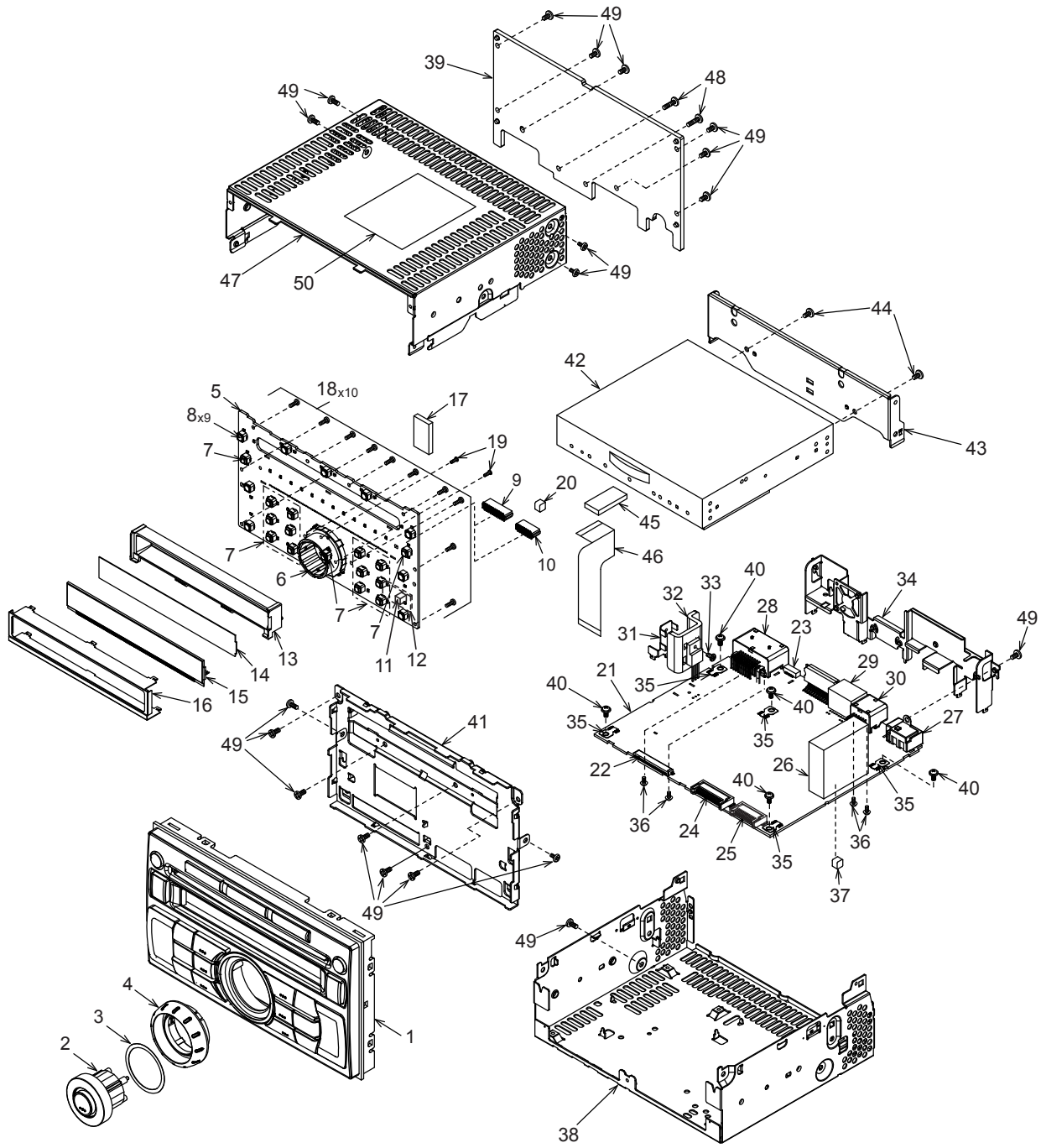


EXPLODED VIEW/PARTS LIST



NO.	PART NO.	DESCRIPTION	Q'TY
1	940-8420-18	ES-ASSY	1
2	947-0591-00	KNOB ASSY	1
3	347-7959-00	SHADE	1
4	380-5655-10	KNOB	1
5	-----	SWITCH PWB	1
6	016-7004-00	ROTARY SWITCH	1
7	013-6201-52	TACT SWITCH	15
8	013-6202-52	TACT SWITCH	9
9	074-3013-72	OUTLET SOCKET (22P)	1
10	074-3013-66	OUTLET SOCKET (16P)	1
11	060-8062-50	CERAMIC-ANT	1
12	060-8079-90	BLUETOOTH MODULE	1
13	335-7693-00	LCD HOLDER	1
14	335-7801-00	LCD LEFLECTOR	1
15	379-1392-52	INDICATOR (LCD)	1
16	331-4166-00	LCD COVER	1
17	345-5923-00	CUSHION RUBBER	1
18	716-0778-52	WAVE SCREW (2 x 6)	10
19	716-0872-51	PAD SCREW (M1.7 x 5)	2
20	345-5805-01	GASKET	1
21	-----	MAIN PWB	1
22	074-1237-79	OUTLET SOCKET (29P)	1
23	076-0478-59	PLUG (9P)	1
24	076-3011-72	PLUG (22P)	1
25	076-3011-66	PLUG (16P)	1

NO.	PART NO.	DESCRIPTION	Q'TY
26	880-2091M	TUNER PACK	1
27	092-2210-01	ANT RECEPT	1
28	074-4009-20	OUTLET SOCKET(20P)	1
29	074-1013-00	OUTLET SOCKET(12P)	1
30	074-1302-12	OUTLET SOCKET(12P)	1
31	331-3880-00	TR HOLDER	1
32	313-1967-00	HEAT SINK	1
33	716-1646-50	IT SCREW (M2.6 x 8)	1
34	307-0720-00	REAR PLATE	1
35	073-0762-90	TERMINAL	5
36	778-3006-00	SPECIAL T-SCREW (3 x 6)	4
37	345-5805-01	GASKET	1
38	311-1914-00	LOWER CASE	1
39	313-1968-00	HEAT SINK	1
40	716-0878-50	SCREW (M2.6 x 5)	5
41	309-0822-10	ES PLATE (1CD)	1
42	929-5004-82	CD MECH MODULE	1
43	331-4123-00	CD BRKT	1
44	714-2603-89	MACHINE SCREW (M2.6x3)	2
45	345-5895-00	CUSHION RUBBER	1
46	816-4025-50	FLAT WIRE	1
47	310-1823-00	UPPER CASE	1
48	735-2614-1B	MACHINE SCREW (M2.6 x 14)	2
49	714-2606-8B	MACHINE SCREW (M2.6 x 6)	19
50	276-0034-73 276-0034-74	SET PLATE (PN-3123N-A) SET PLATE (PN-3123N-B)	1

ELECTRICAL PARTS LIST

Switch PWB(B1) section

REF No.	PART No.	DESCRIPTION	REF No.	PART No.	DESCRIPTION	REF No.	PART No.	DESCRIPTION
ANT902	060-8062-50	CERAMIC-ANT	D835	001-7093-91	RFY1112H-16-TR	R802	119-3331-15	1/10W 33k ohm
C802	168-1042-78	16V 0.1uF			YEL	R803	119-1021-15	1/10W 1k ohm
C803	168-1042-78	16V 0.1uF	D836	001-7093-91	RFY1112H-16-TR	R804	116-3321-15	1/4W 3.3k ohm
C804	168-4732-78	0.047uF K			YEL	R805	116-3321-15	1/4W 3.3k ohm
C805	168-4732-78	0.047uF K	D837	001-7093-91	RFY1112H-16-TR	R806	116-3321-15	1/4W 3.3k ohm
C806	168-4732-78	0.047uF K			YEL	R807	116-3321-15	1/4W 3.3k ohm
C807	166-2211-50	220pF CH	D838	001-7093-91	RFY1112H-16-TR	R808	116-3321-15	1/4W 3.3k ohm
C901	168-1042-78	16V 0.1uF			YEL	R809	116-3921-15	1/4W 3.9k ohm
C902	166-1011-50	100pF CH	D839	001-7093-91	RFY1112H-16-TR	R810	116-2421-15	1/4W 2.4k ohm
C903	168-1042-78	16V 0.1uF			YEL	R811	116-4721-15	1/4W 4.7k ohm
C904	166-1011-50	100pF CH	D846	001-7093-91	RFY1112H-16-TR	R812	116-4721-15	1/4W 4.7k ohm
C905	166-1011-50	100pF CH			YEL	R813	116-4721-15	1/4W 4.7k ohm
C906	042-0423-97	16V 10uF	D847	001-7093-91	RFY1112H-16-TR	R814	116-4721-15	1/4W 4.7k ohm
C907	168-1042-78	16V 0.1uF			YEL	R815	116-2221-15	1/4W 2.2k ohm
C908	168-1042-78	16V 0.1uF	D848	001-7093-91	RFY1112H-16-TR	R816	116-2221-15	1/4W 2.2k ohm
C909	178-3312-78	330pF			YEL	R817	119-2021-15	1/10W 2.0k ohm
CCT801	050-0145-52	1/16W 1k ohm x4	D849	001-7093-91	RFY1112H-16-TR	R819	116-3321-15	1/4W 3.3k ohm
D801	001-0529-32	MA8056-M			YEL	R822	119-2421-15	1/10W 2.4k ohm
D802	001-0529-32	MA8056-M	D850	001-7093-91	RFY1112H-16-TR	R823	116-4721-15	1/4W 4.7k ohm
D803	001-0529-32	MA8056-M			YEL	R824	119-2421-15	1/10W 2.4k ohm
D804	001-0529-32	MA8056-M	D851	001-7093-91	RFY1112H-16-TR	R825	116-4721-15	1/4W 4.7k ohm
D805	001-0529-32	MA8056-M			YEL	R826	119-2421-15	1/10W 2.4k ohm
D806	001-7093-91	RFY1112H-16-TR	D852	001-7093-91	RFY1112H-16-TR	R827	116-3921-15	1/4W 3.9k ohm
		YEL			YEL	R828	119-2421-15	1/10W 2.4k ohm
D807	001-7093-91	RFY1112H-16-TR	D853	001-7093-91	RFY1112H-16-TR	R829	116-2421-15	1/4W 2.4k ohm
		YEL			YEL	R830	119-2421-15	1/10W 2.4k ohm
D808	001-7093-91	RFY1112H-16-TR	D855	001-7093-91	RFY1112H-16-TR	R831	116-4721-15	1/4W 4.7k ohm
		YEL			YEL	R832	119-2421-15	1/10W 2.4k ohm
D809	001-7093-91	RFY1112H-16-TR	D856	001-7093-91	RFY1112H-16-TR	R833	119-2021-15	1/10W 2.0k ohm
		YEL			YEL	R905	119-2711-15	1/10W 270 ohm
D810	001-7093-91	RFY1112H-16-TR	D857	001-7093-91	RFY1112H-16-TR	R909	119-1031-15	1/10W 10k ohm
		YEL			YEL	R914	119-5631-15	1/10W 56k ohm
D811	001-7093-91	RFY1112H-16-TR	D858	001-7093-91	RFY1112H-16-TR	R916	119-1821-15	1/10W 1.8k ohm
		YEL			YEL	R917	119-2711-15	1/10W 270 ohm
D812	001-7093-91	RFY1112H-16-TR	D859	001-7093-91	RFY1112H-16-TR	R918	119-1011-15	1/10W 100 ohm
		YEL			YEL	R919	119-1011-15	1/10W 100 ohm
D813	001-7093-91	RFY1112H-16-TR	D860	001-7093-91	RFY1112H-16-TR	S801	016-7004-00	ROTARY SWITCH
		YEL			YEL	S802	013-6201-52	SKPMAP010
D814	001-7093-91	RFY1112H-16-TR	D861	001-7093-91	RFY1112H-16-TR	S803	013-6202-52	SKPMBJE010
		YEL			YEL	S804	013-6202-52	SKPMBJE010
D815	001-7093-91	RFY1112H-16-TR	D862	001-7093-91	RFY1112H-16-TR	S807	013-6202-52	SKPMBJE010
		YEL			YEL	S808	013-6201-52	SKPMAP010
D816	001-7093-91	RFY1112H-16-TR	D864	001-7093-91	RFY1112H-16-TR	S809	013-6201-52	SKPMAP010
		YEL			YEL	S810	013-6202-52	SKPMBJE010
D817	001-7093-91	RFY1112H-16-TR	D865	001-7093-91	RFY1112H-16-TR	S811	013-6202-52	SKPMBJE010
		YEL			YEL	S812	013-6202-52	SKPMBJE010
D818	001-7093-91	RFY1112H-16-TR	D866	001-7093-91	RFY1112H-16-TR	S813	013-6201-52	SKPMAP010
		YEL			YEL	S814	013-6201-52	SKPMAP010
D819	001-7093-91	RFY1112H-16-TR	D867	001-7093-91	RFY1112H-16-TR	S815	013-6202-52	SKPMBJE010
		YEL			YEL	S816	013-6202-52	SKPMBJE010
D820	001-7093-91	RFY1112H-16-TR	D869	001-7093-91	RFY1112H-16-TR	S818	013-6201-52	SKPMAP010
		YEL			YEL	S819	013-6201-52	SKPMAP010
D821	001-7093-91	RFY1112H-16-TR	D870	001-7093-91	RFY1112H-16-TR	S820	013-6201-52	SKPMAP010
		YEL			YEL	S821	013-6202-52	SKPMBJE010
D822	001-7093-91	RFY1112H-16-TR	IC801	051-6075-00	LC75816W-8722-E	S822	013-6201-52	SKPMAP010
		YEL	IC901	060-8079-90	UGZ5-601D	S823	013-6201-52	SKPMAP010
D823	001-7093-91	RFY1112H-16-TR	J801	074-3013-72	22P	S824	013-6201-52	SKPMAP010
		YEL	J901	074-3013-66	16P	S825	013-6201-52	SKPMAP010
D824	001-7093-91	RFY1112H-16-TR	LCD801	379-1392-52	INDICATOR (LCD)	S826	013-6201-52	SKPMAP010
		YEL	L901	010-3104-54	600 ohm/100MHz	S827	013-6201-52	SKPMAP010
D830	001-7093-91	RFY1112H-16-TR	L902	010-3104-54	600 ohm/100MHz	S828	013-6201-52	SKPMAP010
		YEL	L903	010-3104-54	600 ohm/100MHz	TM901	073-0778-90	TERMINAL
D831	001-7093-91	RFY1112H-16-TR	L904	010-3104-54	600 ohm/100MHz	TM902	073-0778-90	TERMINAL
		YEL	L906	010-3104-54	600 ohm/100MHz	TM903	073-0778-90	TERMINAL
D832	001-7093-91	RFY1112H-16-TR	L907	010-3104-54	600 ohm/100MHz	TM904	073-0778-90	TERMINAL
		YEL	L909	010-3104-54	600 ohm/100MHz	PWB	039-2925-01	PWB(WITHOUT COMPONENT)
D833	001-7093-91	RFY1112H-16-TR	L910	010-3104-54	600 ohm/100MHz			
		YEL	L911	010-3104-54	600 ohm/100MHz			
D834	001-7093-91	RFY1112H-16-TR	L912	010-3104-54	600 ohm/100MHz			
		YEL	R801	119-0000-05	1/10W 0 ohm JW			

Main PWB(B2) section

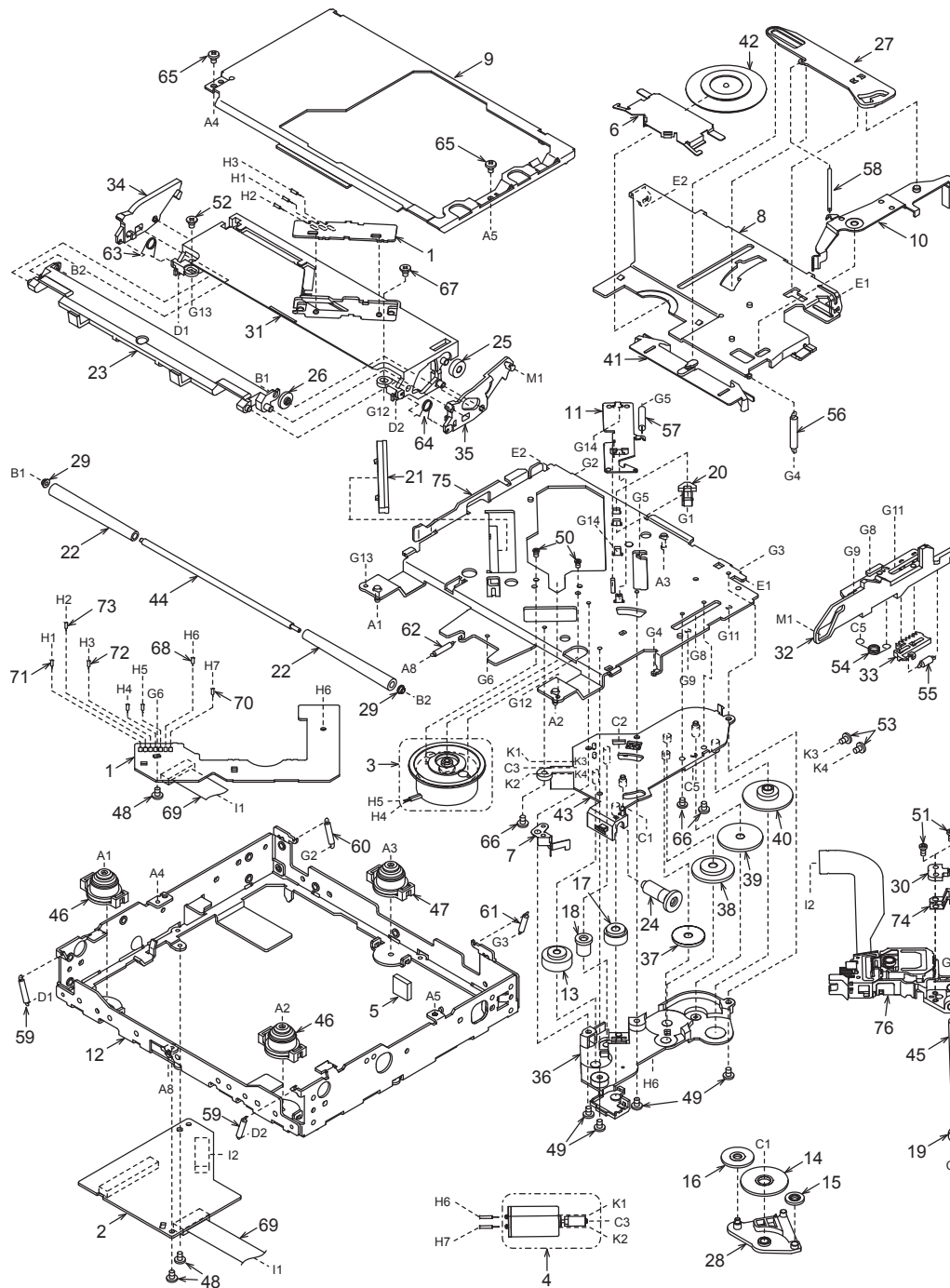
(Note) Some parts depend on each model. The model name is specified in the description.

REF No.	PART No.	DESCRIPTION	REF No.	PART No.	DESCRIPTION	REF No.	PART No.	DESCRIPTION
ANT101	092-2210-01	ANTENNA RECEPT	C310	168-1022-55	1000pF K	C522	178-3342-78	0.33uF
BL101	880-2091M	FM/AM TUNER	C311	163-4753-65	50V 4.7uF	C523	163-1063-35	16V 10uF
C104	168-2222-55	2200pF K (PN-3123N-A)	C312	168-1042-78	16V 0.1uF	C525	163-1073-35	16V 100uF
C108	166-1511-50	150pF CH (PN-3123N-A)	C313	163-4753-65	50V 4.7uF	C530	163-1073-35	16V 100uF
C108	119-0000-05	1/10W 0 ohm JW (PN-3123N-B)	C314	168-1042-78	16V 0.1uF	C532	168-1042-78	16V 0.1uF
C109	166-2201-50	22pF CH	C315	168-1022-55	1000pF K	C533	168-5632-78	16V 0.056uF
C110	168-1042-78	16V 0.1uF	C316	168-1022-55	1000pF K	C534	168-5632-78	16V 0.056uF
C111	178-3342-78	0.33uF	C317	166-1011-50	100pF CH	C535	168-5632-78	16V 0.056uF
C112	163-4763-15	6.3V 47uF	C318	168-1042-78	16V 0.1uF	C536	168-5632-78	16V 0.056uF
C113	178-1052-78	1uF	C319	168-5622-55	5600pF K	C537	178-1052-78	1uF
C114	178-1052-78	1uF	C320	168-5622-55	5600pF K	C540	163-1063-35	16V 10uF
C115	119-0000-05	1/10W 0 ohm JW	C323	168-1022-55	1000pF K	C541	168-1522-55	1500pF K
C116	168-1222-55	1200pF K	C324	163-2273-05	4V 220uF	C546	168-1042-78	16V 0.1uF
C117	178-1052-78	1uF	C325	168-2222-55	2200pF K	C547	178-1052-78	1uF
C118	168-4732-78	0.047uF K	C326	166-4711-50	470pF CH	C549	163-2273-25	10V 220uF
C119	168-1022-55	1000pF K	C327	163-2263-35	16V 22uF	C550	178-4742-78	0.47uF
C120	168-4722-55	4700pF K	C328	168-1022-55	1000pF K	C551	168-1042-38	50V 0.1uF
C121	168-4722-55	4700pF K	C329	166-1007-50	10pF CH	C552	163-4763-35	16V 47uF
C122	163-1073-35	16V 100uF	C330	163-1063-35	16V 10uF	C553	163-4763-35	16V 47uF
C123	168-2222-55	2200pF K	C331	166-1011-50	100pF CH	C554	189-3383-31	16V 3300uF
C124	168-1022-55	1000pF K	C333	168-1042-78	16V 0.1uF	C556	172-1041-15	0.1uF
C125	168-2232-55	0.022uF K	C334	163-4763-15	6.3V 47uF	C557	163-4763-35	16V 47uF
C126	168-2232-55	0.022uF K	C335	178-1052-78	1uF	C559	168-6822-55	6800pF K
C127	168-1022-55	1000pF K	C336	168-3332-78	0.033uF K	C560	168-6822-55	6800pF K
C128	168-1022-55	1000pF K	C338	168-1022-55	1000pF K	C561	168-6822-55	6800pF K
C129	178-1052-78	1uF	C339	168-1022-55	1000pF K	C562	168-6822-55	6800pF K
C130	168-1022-55	1000pF K	C340	166-1007-50	10pF CH	C563	168-6822-55	6800pF K
C131	163-1073-35	16V 100uF	C341	168-4712-55	470pF K	C564	166-2201-50	22pF CH
C132	166-2201-50	22pF CH	C342	168-1042-78	16V 0.1uF	C565	168-6822-55	6800pF K
C133	166-2201-50	22pF CH	C343	168-1022-55	1000pF K	C566	168-6822-55	6800pF K
C134	166-2201-50	22pF CH	C345	168-3322-55	3300pF K	C567	043-0604-90	25V 10uF B
C135	166-2201-50	22pF CH	C346	168-3322-55	3300pF K	C568	168-6822-55	6800pF K
C136	178-1052-78	1uF	C347	168-3322-55	3300pF K	C569	168-6822-55	6800pF K
C137	178-1052-78	1uF	C348	168-3322-55	3300pF K	C571	043-0566-90	50V 2.2uF K
C138	178-3342-78	0.33uF	C350	042-0643-58	6.3V 330uF	C572	178-1052-78	1uF
C140	163-1063-35	16V 10uF	C351	168-4722-55	4700pF K	C573	168-1042-78	16V 0.1uF
C141	163-1063-35 (PN-3123N-A)	16V 10uF	C352	168-2222-55	2200pF K	C574	163-1063-35	16V 10uF
C142	168-1042-78	16V 0.1uF	C353	168-2222-55	2200pF K	C575	168-2232-55	0.022uF K
C143	166-6801-50	68pF CH	C354	168-2222-55	2200pF K	C576	163-1073-35	16V 100uF
C144	043-0548-50	2.2uF	C355	168-2222-55	2200pF K	C577	168-2212-55	220pF K
C201	043-0548-50	2.2uF	C356	163-1073-15	6.3V 100uF	C578	119-0000-05	1/10W 0 ohm JW
C202	043-0548-50	2.2uF	C359	168-1022-55	1000pF K	CCT301	050-0145-61	1/16W 0 ohm x4
C203	043-0548-50	2.2uF	C360	166-4711-50	470pF CH	CCT401	050-0145-52	1/16W 1k ohm x4
C204	043-0548-50	2.2uF	C361	043-0554-90	25V 10uF	CCT402	050-0145-52	1/16W 1k ohm x4
C210	168-1022-55	1000pF K	C401	168-1042-78	16V 0.1uF	CCT403	050-0145-52	1/16W 1k ohm x4
C211	168-1022-55	1000pF K	C402	168-1042-78	16V 0.1uF	CCT404	050-0145-52	1/16W 1k ohm x4
C212	168-1022-55	1000pF K	C404	166-5096-50	5pF CH	D106	001-0580-90	1SS352
C221	043-0554-90	25V 10uF	C406	166-5096-50	5pF CH	D108	001-0529-48	MA8091-H
C225	178-3342-78	0.33uF	C407	168-1042-78	16V 0.1uF	D109	001-0580-90	1SS352(PN-3123N-A)
C227	042-0643-58	6.3V 330uF	C408	163-4763-15	6.3V 47uF	D201	001-4305-39	UDZSTE-17 36B
C228	163-2273-25	10V 220uF	C409	168-1042-78	16V 0.1uF	D202	001-0580-90	1SS352
C229	163-1063-35	16V 10uF	C412	168-1032-55	0.01uF K	D203	001-0580-90	1SS352
C230	168-1042-78	16V 0.1uF	C413	163-1073-35	16V 100uF	D205	001-0580-90	1SS352
C232	163-1063-35	16V 10uF	C501	168-1042-78	16V 0.1uF	D206	001-0529-32	MA8056-M
C233	168-1042-78	16V 0.1uF	C502	168-1042-78	16V 0.1uF	D207	001-0580-90	1SS352
C239	168-1042-78	16V 0.1uF	C503	168-1042-78	16V 0.1uF	D208	001-0580-90	1SS352
C240	163-3363-25	10V 33uF	C504	168-1042-78	16V 0.1uF	D210	001-0529-72	MA8200-M
C241	168-1022-55	1000pF K	C505	166-5611-50	560pF CH	D211	001-9210-50	AVR- M1608C270MTAAD
C242	168-1022-55	1000pF K	C506	166-5611-50	560pF CH	D212	001-9210-50	AVR- M1608C270MTAAD
C244	163-4763-35	16V 47uF	C507	166-5611-50	560pF CH	D213	001-9210-50	AVR- M1608C270MTAAD
C301	163-4753-65	50V 4.7uF	C508	166-5611-50	560pF CH	D214	001-9210-50	AVR- M1608C270MTAAD
C302	168-1042-78	16V 0.1uF	C509	166-2201-50	22pF CH	D505	001-0529-48	MA8091-H
C303	166-1811-50	180pF CH	C510	166-2201-50	22pF CH	D506	001-2640-90	D1FJ4
C304	166-1007-50	10pF CH	C511	043-0554-90	25V 10uF	D508	001-0529-48	MA8091-H
C306	168-1042-78	16V 0.1uF	C512	178-3342-78	0.33uF	D510	001-2015-00	RL253
C307	168-1042-78	16V 0.1uF	C513	166-2201-50	22pF CH	D511	001-0580-90	1SS352
C308	166-8097-50	8pF C CH	C514	166-2201-50	22pF CH	D512	001-0529-48	MA8091-H
C309	166-8097-50	8pF C CH	C516	166-5611-50	560pF CH	D514	001-0580-90	1SS352
			C517	166-5611-50	560pF CH			
			C519	166-5611-50	560pF CH			
			C520	166-5611-50	560pF CH			
			C521	168-1042-78	16V 0.1uF			

REF No.	PART No.	DESCRIPTION	REF No.	PART No.	DESCRIPTION	REF No.	PART No.	DESCRIPTION
D515	001-0529-34	MA8062-L	Q217	193-1664-00	2SD1664 P,Q,R	R166	119-1031-15	1/10W 10k ohm
D516	001-0580-90	1SS352	Q218	125-9017-92	UMD3N-TR	R167	119-1031-15	1/10W 10k ohm
D567	001-0580-90	1SS352	Q219	125-2027-90	DTC143EU	R168	119-1031-15	1/10W 10k ohm
D568	001-0580-90	1SS352	Q220	191-1197-50	2SB1197K Q,R	R169	119-1031-15	1/10W 10k ohm
D569	001-4301-68	HZU18B1	Q301	125-7007-90	Si5441BDC-TI-E3	R170	119-1031-15	1/10W 10k ohm
D570	001-4301-68	HZU18B1	Q302	125-2027-91	DTC114EUA	R171	119-0000-05	1/10W 0 ohm JW
D571	001-4301-68	HZU18B1	Q303	125-2027-91	DTC114EUA	R172	119-0000-05	1/10W 0 ohm JW
IC101	051-6524-90	AK2301A-E1	Q304	125-2027-91	DTC114EUA	R173	119-1531-15	1/10W 15k ohm
IC103	051-3034-90	NJM4558V	Q305	125-2027-91	DTC114EUA	R174	119-2231-15	1/10W 22k ohm
IC104	051-3519-90	NJU7771F05-TE2	Q306	125-2027-91	DTC114EUA	R175	119-1021-15	1/10W 1k ohm
IC107	051-7255-08	SN74AHC1G66	Q307	125-2027-91	DTC114EUA	R176	119-3931-15	1/10W 39k ohm
		HDCKR	Q308	125-2027-91	DTC114EUA	R177	119-6821-15	1/10W 6.8k ohm
IC203	051-3518-90	NJM2846DL3-33-TE1	Q401	125-2027-91	DTC114EUA	R201	119-1021-15	1/10W 1k ohm
			Q402	125-0021-91	DTA114EUA	R202	119-1021-15	1/10W 1k ohm
IC204	051-3340-00	LD1085P	Q403	191-0709-00	2SB709A Q,R,S	R207	119-3011-15	1/10W 300 ohm
IC301	-----	SAF7730HV/N317	Q404	192-2712-00	2SC2712	R208	119-3011-15	1/10W 300 ohm
IC402	-----	M30876FJBJGP	Q503	125-2027-91	DTC114EUA	R226	119-5621-15	1/10W 5.6k ohm
IC404	051-5417-08	S-80927CNMC-G8X	Q504	191-1197-50	2SB1197K Q,R	R228	119-5621-15	1/10W 5.6k ohm
IC406	051-9425-80	S-24CS64A0I-J8T1G	Q506	125-2027-91	DTC114EUA	R231	119-5631-15	1/10W 56k ohm
IC501	051-3019-90	NJM2060V	Q507	191-1197-50	2SB1197K Q,R	R232	119-5631-15	1/10W 56k ohm
IC502	051-3518-90	NJM2846DL3-33-TE1	Q509	193-2118-00	2SD2118F5 Q,R,S	R234	119-1031-15	1/10W 10k ohm
			Q512	125-2027-91	DTC114EUA	R235	119-1031-15	1/10W 10k ohm
IC503	051-2042-00	TA8275H	Q515	193-1664-00	2SD1664 P,Q,R	R238	119-5631-15	1/10W 56k ohm
IC504	051-3396-90	NJM2386ADL3-33-TE1	Q516	192-4116-51	2SC4116 G,L	R239	119-1031-15	1/10W 10k ohm
			Q517	191-1204-61	2SB1204 R,S,T	R240	119-2231-15	1/10W 22k ohm
IC505	051-3517-90	LT3481EMSE	Q518	125-2027-91	DTC114EUA	R241	119-4731-15	1/10W 47k ohm
		#TRPBF	Q519	191-1197-50	2SB1197K Q,R	R246	117-2211-15	1/8W 220 ohm
IC506	051-5441-08	BD4828G-TR	Q520	192-4116-00	2SC4116	R247	119-1041-15	1/10W 100k ohm
J201	074-1302-12	TH12P-SOCKET	Q521	192-4081-00	2SC4081	R248	116-2201-15	1/4W 22 ohm
J203	074-1237-79	SOCKET(29P)	Q522	125-2027-91	DTC114EUA	R249	032-0140-98	1/10W 330 ohm F
J204	074-1013-00	12P	Q523	192-4081-00	2SC4081	R250	116-1221-15	1/4W 1.2k ohm
J502	074-4009-20	SOCKET(20P)	R103	119-3321-15	1/10W 3.3k ohm	R251	032-0140-70	1/10W 1.8k ohm F
L105	010-2003-04	30uH	R106	119-0000-05	1/10W 0 ohm JW	R252	119-1031-15	1/10W 10k ohm
L106	010-3104-54	600 ohm/100MHz	R109	119-3321-15	1/10W 3.3k ohm	R254	119-1021-15	1/10W 1k ohm
L107	010-3104-54	600 ohm/100MHz	R111	119-3321-15	1/10W 3.3k ohm	R262	119-1021-15	1/10W 1k ohm
L108	010-2198-50	0.15uH	R112	119-0000-05	1/10W 0 ohm JW	R301	119-1031-15	1/10W 10k ohm
L301	010-3104-54	600 ohm/100MHz	R113	119-3321-15	1/10W 3.3k ohm	R302	119-1031-15	1/10W 10k ohm
L302	010-3104-54	600 ohm/100MHz	R116	119-2741-15	1/10W 270k ohm	R303	119-2201-15	1/10W 22 ohm
L303	010-3104-54	600 ohm/100MHz	R117	119-3321-15	1/10W 33k ohm	R304	032-0140-80	1/10W 18k ohm F
L304	010-3104-54	600 ohm/100MHz	R118	119-3931-15	1/10W 39k ohm	R305	032-0140-80	1/10W 18k ohm F
L305	010-3104-54	600 ohm/100MHz	R121	119-3931-15	1/10W 39k ohm	R306	032-0140-80	1/10W 18k ohm F
L306	010-3104-54	600 ohm/100MHz	R122	119-1031-15	1/10W 10k ohm	R307	032-0140-80	1/10W 18k ohm F
L307	010-3104-54	600 ohm/100MHz	R123	119-1031-15	1/10W 10k ohm	R314	119-1011-15	1/10W 100 ohm
L308	010-3104-54	600 ohm/100MHz	R124	119-3931-15	1/10W 39k ohm	R315	119-1031-15	1/10W 10k ohm
L309	010-3104-54	600 ohm/100MHz	R125	119-1031-15	1/10W 10k ohm	R316	119-1021-15	1/10W 1k ohm
L310	010-3104-54	600 ohm/100MHz	R126	119-1011-15	1/10W 100 ohm	R317	119-1031-15	1/10W 10k ohm
L311	010-3104-54	600 ohm/100MHz	R127	119-4731-15	1/10W 47k ohm	R318	119-3921-15	1/10W 3.9k ohm
L312	010-3104-54	600 ohm/100MHz	R128	119-4731-15	1/10W 47k ohm	R319	119-1031-15	1/10W 10k ohm
L313	010-3104-54	600 ohm/100MHz	R129	119-4731-15	1/10W 47k ohm	R320	119-3921-15	1/10W 3.9k ohm
L402	010-3406-54	2.2uH J	R130	119-8221-15	1/10W 8.2k ohm	R321	119-1031-15	1/10W 10k ohm
L501	010-3104-54	600 ohm/100MHz	R131	119-1011-15	1/10W 100 ohm	R322	119-0000-05	1/10W 0 ohm JW
L503	010-3414-90	6.8uH	R132	119-1011-15	1/10W 100 ohm	R323	119-1031-15	1/10W 10k ohm
P101	076-3011-66	16P	R134	119-1031-15	1/10W 10k ohm	R324	119-1041-15	1/10W 100k ohm
P401	076-0478-59	PLUG (9P)	R135	119-2231-15	1/10W 22k ohm	R325	119-1041-15	1/10W 100k ohm
P402	076-3011-72	22P	R136	116-6891-15	1/4W 6.8 ohm	R326	119-1001-15	1/10W 10 ohm
Q101	198-3018-00	2SK3018	R138	119-1031-15	1/10W 10k ohm	R327	119-3921-15	1/10W 3.9k ohm
Q102	198-3018-00	2SK3018	R139	119-1041-15	1/10W 100k ohm	R328	119-0000-05	1/10W 0 ohm JW
Q104	125-9017-92	UMD3N-TR	R140	119-1001-15	1/10W 10 ohm	R329	119-1021-15	1/10W 1k ohm
Q105	125-2027-91	DTC114EUA	R141	119-1031-15	1/10W 10k ohm	R330	119-3921-15	1/10W 3.9k ohm
Q106	125-2027-91	DTC114EUA	R143	119-2231-15	1/10W 22k ohm	R331	119-0000-05	1/10W 0 ohm JW
Q107	125-2027-91	DTC114EUA	R144	119-2231-15	1/10W 22k ohm	R332	032-0140-50	1/10W 10k ohm F
Q108	125-2027-91	DTC114EUA	R145	119-1001-15	1/10W 10 ohm	R334	032-0140-50	1/10W 10k ohm F
Q109	192-5886-00	2SC5886	R146	119-1031-15	1/10W 10k ohm	R336	032-0140-50	1/10W 10k ohm F
Q110	125-2027-90	DTC143EU	R148	116-1091-15	1/4W 1 ohm	R337	032-0140-50	1/10W 10k ohm F
		(PN-3123N-A)			(PN-3123N-A)	R338	032-0140-50	1/10W 10k ohm F
Q111	190-2060-00	2SA2060	R149	116-1221-15	1/4W 1.2k ohm	R339	032-0140-50	1/10W 10k ohm F
		(PN-3123N-A)			(PN-3123N-A)	R340	032-0140-50	1/10W 10k ohm F
Q112	125-9017-92	UMD3N-TR	R150	116-3911-15	1/4W 390 ohm	R341	119-1031-15	1/10W 10k ohm
Q208	192-4081-00	2SC4081	R151	119-1031-15	1/10W 10k ohm	R342	119-1031-15	1/10W 10k ohm
Q209	192-4081-00	2SC4081			(PN-3123N-A)	R343	119-1031-15	1/10W 10k ohm
Q210	192-4081-00	2SC4081	R153	119-1041-15	1/10W 100k ohm	R344	119-1011-15	1/10W 100 ohm
Q211	125-0021-91	DTA114EUA	R162	119-0000-05	1/10W 0 ohm JW	R345	119-1011-15	1/10W 100 ohm
Q212	125-2027-91	DTC114EUA	R165	119-1031-15	1/10W 10k ohm	R346	119-0000-05	1/10W 0 ohm JW

REF No.	PART No.	DESCRIPTION	REF No.	PART No.	DESCRIPTION	REF No.	PART No.	DESCRIPTION
R347	119-0000-05	1/10W 0 ohm JW	R452	119-4731-15	1/10W 47k ohm	R553	119-4721-15	1/10W 4.7k ohm
R348	119-0000-05	1/10W 0 ohm JW	R453	119-4731-15	1/10W 47k ohm	R554	032-0140-51	1/10W 15k ohm F
R349	119-0000-05	1/10W 0 ohm JW	R454	119-4731-15	1/10W 47k ohm	R556	119-4721-15	1/10W 4.7k ohm
R350	119-1031-15	1/10W 10k ohm	R455	119-2231-15	1/10W 22k ohm	R557	119-4721-15	1/10W 4.7k ohm
R351	119-0000-05	1/10W 0 ohm JW	R456	119-4731-15	1/10W 47k ohm	R563	116-3911-15	1/4W 390 ohm
R352	119-4731-15	1/10W 47k ohm	R458	119-1011-15	1/10W 100 ohm	R564	116-1221-15	1/4W 1.2k ohm
R353	119-1021-15	1/10W 1k ohm	R459	119-1011-15	1/10W 100 ohm	R565	116-1221-15	1/4W 1.2k ohm
R354	119-1021-15	1/10W 1k ohm	R460	119-4721-15	1/10W 4.7k ohm	R566	119-1521-15	1/10W 1.5k ohm
R355	119-1021-15	1/10W 1k ohm	R461	119-4721-15	1/10W 4.7k ohm	R567	119-1031-15	1/10W 10k ohm
R356	119-1021-15	1/10W 1k ohm	R462	119-1041-15	1/10W 100k ohm	R568	116-1221-15	1/4W 1.2k ohm
R357	119-4731-15	1/10W 47k ohm	R463	119-1041-15	1/10W 100k ohm	R569	116-1221-15	1/4W 1.2k ohm
R358	119-1001-15	1/10W 10 ohm	R464	119-2231-15	1/10W 22k ohm	R570	119-1031-15	1/10W 10k ohm
R359	119-4731-15	1/10W 47k ohm	R466	119-4731-15	1/10W 47k ohm	R571	119-4721-15	1/10W 4.7k ohm
R360	119-4731-15	1/10W 47k ohm	R467	119-4731-15	1/10W 47k ohm	R572	119-1031-15	1/10W 10k ohm
R361	119-4731-15	1/10W 47k ohm	R468	119-1031-15	1/10W 10k ohm	R573	032-0148-50	1/10W 100k ohm
R362	119-4731-15	1/10W 47k ohm	R469	119-1031-15	1/10W 10k ohm	R574	032-0140-16	1/10W 180k ohm F
R400	119-0000-05	1/10W 0 ohm JW	R470	119-4731-15	1/10W 47k ohm	R575	116-2721-15	1/4W 2.7k ohm
R401	119-1021-15	1/10W 1k ohm	R471	119-1241-15	1/10W 120k ohm	R576	116-1531-15	1/4W 15k ohm
R402	119-1021-15	1/10W 1k ohm	R472	119-3331-15	1/10W 33k ohm	R577	119-0000-05	1/10W 0 ohm JW
R403	119-1021-15	1/10W 1k ohm	R473	119-6801-15	1/10W 68 ohm	R578	119-2221-15	1/10W 2.2k ohm
R404	119-0000-05	1/10W 0 ohm JW	R474	119-2241-15	1/10W 220k ohm	R580	116-1531-15	1/4W 15k ohm
R405	119-1021-15	1/10W 1k ohm	R489	119-4731-15	1/10W 47k ohm	R581	119-1031-15	1/10W 10k ohm
R406	119-1021-15	1/10W 1k ohm	R502	119-1031-15	1/10W 10k ohm	R582	119-5611-15	1/10W 560 ohm
R407	119-1021-15	1/10W 1k ohm	R503	119-1031-15	1/10W 10k ohm	R583	116-4791-15	1/4W 4.7 ohm
R408	119-4721-15	1/10W 4.7k ohm	R504	119-1031-15	1/10W 10k ohm	R584	116-4791-15	1/4W 4.7 ohm
R409	119-4721-15	1/10W 4.7k ohm	R505	119-1031-15	1/10W 10k ohm	R585	119-1031-15	1/10W 10k ohm
R410	119-4731-15	1/10W 47k ohm	R507	119-1031-15	1/10W 10k ohm	R586	119-0000-05	1/10W 0 ohm JW
R411	119-3311-15	1/10W 330 ohm	R508	119-1031-15	1/10W 10k ohm	R587	119-2231-15	1/10W 22k ohm
R412	119-3311-15	1/10W 330 ohm	R509	119-1031-15	1/10W 10k ohm	R588	119-3321-15	1/10W 3.3k ohm
R413	119-4731-15	1/10W 47k ohm	R510	119-1031-15	1/10W 10k ohm	R590	119-0000-05	1/10W 0 ohm JW
R416	119-4731-15	1/10W 47k ohm	R511	119-0000-05	1/10W 0 ohm JW	R591	119-0000-05	1/10W 0 ohm JW
R417	119-4731-15	1/10W 47k ohm	R512	119-1031-15	1/10W 10k ohm	R592	119-0000-05	1/10W 0 ohm JW
R422	119-1011-15	1/10W 100 ohm	R513	119-1031-15	1/10W 10k ohm	R593	119-0000-05	1/10W 0 ohm JW
R423	119-1011-15	1/10W 100 ohm	R514	119-1051-15	1/10W 1M ohm	R594	119-0000-05	1/10W 0 ohm JW
R424	119-1011-15	1/10W 100 ohm	R515	119-1051-15	1/10W 1M ohm	R595	119-4731-15	1/10W 47k ohm
R425	119-1011-15	1/10W 100 ohm	R517	119-1051-15	1/10W 1M ohm	R596	119-4731-15	1/10W 47k ohm
R426	119-1011-15	1/10W 100 ohm	R518	119-1051-15	1/10W 1M ohm	R597	119-7531-15	1/10W 75k ohm
R427	119-1011-15	1/10W 100 ohm	R519	119-1031-15	1/10W 10k ohm	R598	119-4731-15	1/10W 47k ohm
R428	119-1031-15	1/10W 10k ohm	R520	119-1031-15	1/10W 10k ohm	R943	119-1021-15	1/10W 1k ohm
R429	119-1031-15	1/10W 10k ohm	R521	119-1031-15	1/10W 10k ohm	SUP102	060-0122-91	DSP-141N-S00B
R436	119-1021-15	1/10W 1k ohm	R522	119-1031-15	1/10W 10k ohm	TH101	002-0229-00	PTH8L05BAIR8M1B
R437	119-1021-15	1/10W 1k ohm	R523	119-1031-15	1/10W 10k ohm	TH201	002-0229-00	PTH8L05BAIR8M1B
R440	119-4721-15	1/10W 4.7k ohm	R524	119-1031-15	1/10W 10k ohm	T508	009-0670-81	180uH
R441	119-1021-15	1/10W 1k ohm	R525	119-1031-15	1/10W 10k ohm	TM101	073-0762-90	TERMINAL
R442	119-1031-15	1/10W 10k ohm	R526	119-1031-15	1/10W 10k ohm	TM102	073-0762-90	TERMINAL
R443	119-4731-15	1/10W 47k ohm	R533	119-1031-15	1/10W 10k ohm	TM201	073-0762-90	TERMINAL
R445	119-0000-05	1/10W 0 ohm JW	R534	119-1031-15	1/10W 10k ohm	TM501	073-0762-90	TERMINAL
R446	119-4731-15	1/10W 47k ohm	R535	119-1031-15	1/10W 10k ohm	TM502	073-0762-90	TERMINAL
R447	119-1031-15	1/10W 10k ohm	R540	116-6811-15	1/4W 680 ohm	X301	061-3537-90	41.6MHz
R448	119-4731-15	1/10W 47k ohm	R542	032-0140-03	1/10W 220k ohm F	X401	061-3541-90	CRYSTAL 10MHz
R449	119-1021-15	1/10W 1k ohm	R543	032-0140-19	1/10W 75k ohm F	PWB	039-3125-00	PWB(WITHOUT COMPONENT)
R450	119-1021-15	1/10W 1k ohm	R548	119-2241-15	1/10W 220k ohm			
R451	119-4731-15	1/10W 47k ohm	R551	119-1031-15	1/10W 10k ohm			

EXPLODED VIEW/PARTS LIST

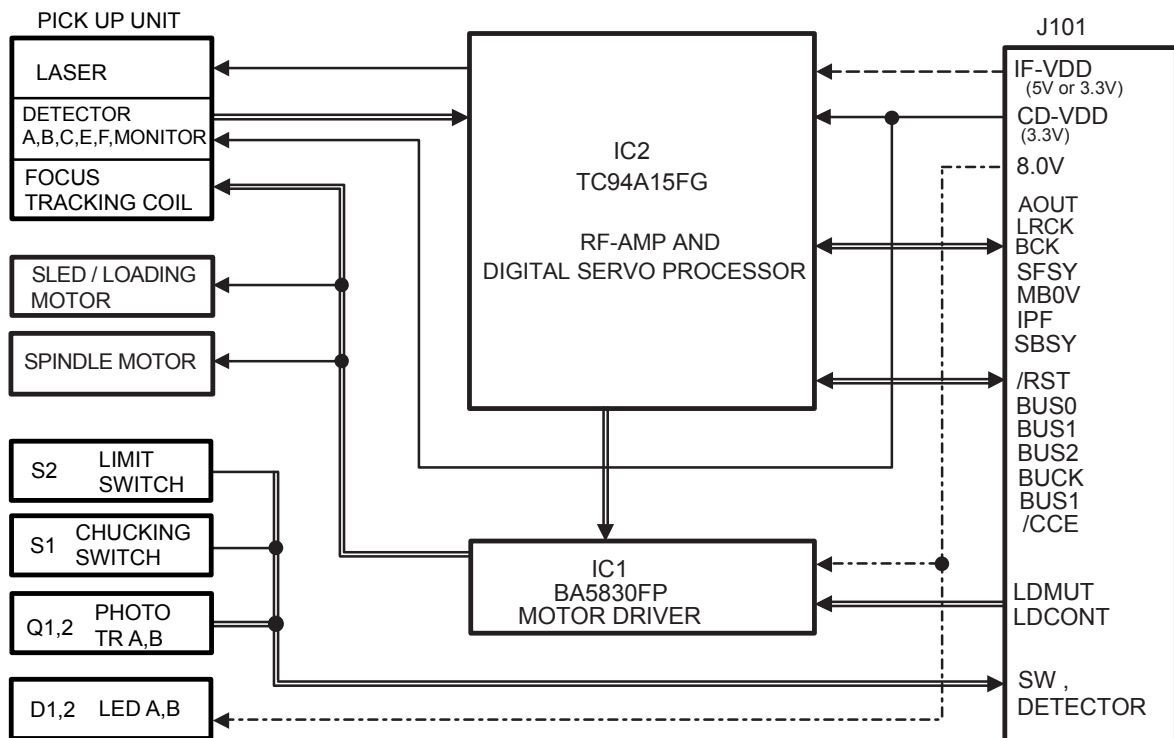


NO.	PART NO.	DESCRIPTION	QTY
1	-----	LED PWB	1
2	-----	CD PWB	1
3	SMA-182-100	SPINDLE MOTOR-ASSY	1
4	SMA-183-100	SLED MOTOR-ASSY	1
5	345-5476-20	CUSHION RUBBER	1
6	620-1023-23	CLAMPER PLATE	1
7	620-1026-21	SPRING PLATE	1
8	620-1596-23	CLAMPER LINK	1
9	620-1598-22	UPPER CHASSIS	1
10	620-1752-20	SENSOR ARM	1

NO.	PART NO.	DESCRIPTION	QTY
11	620-1753-20	ID-LOCK PLATE	1
12	620-1868-20	LOWER CHASSIS	1
13	621-0608-21	SECOND GEAR	1
14	621-0609-20	BASE GEAR	1
15	621-0610-20	IDLE GEAR A	1
16	621-0611-20	IDLE GEAR B	1
17	621-0612-21	ROLLER GEAR A	1
18	621-0620-20	THREAD GEAR A	1
19	621-0621-20	THREAD GEAR B	1
20	621-0623-23	LS-HOLDER	1

NO.	PART NO.	DESCRIPTION	Q'TY	NO.	PART NO.	DESCRIPTION	Q'TY
21	621-0624-22	GUIDE RAIL	1	49	716-1670-01	SCREW(M2x4)	4
22	621-0711-21	LOADING ROLLER	2	50	716-1733-01	SCREW(M1.7x2.3)	2
23	621-0718-21	ROLLER GUIDE	1	51	716-3469-01	SCREW(1.7x4)	2
24	621-0719-20	ROLLER GEAR B	1	52	716-3473-01	SCREW(M2x3)	1
25	621-0720-20	ROLLER GEAR C	1	53	716-3551-00	SCREW(M1.4x2.5)	2
26	621-0721-20	ROLLER GEAR D	1	54	750-7865-20	SHIFT SPRING	1
27	621-0728-20	STOPPER LINK	1	55	750-7866-20	RACK SPRING	1
28	621-1719-20	IDLE CASE	1	56	750-7867-20	CLAMPER SPRING	1
29	621-1726-20	ROLLER SLEEVE	2	57	750-7868-20	ID-LOCK SPRING	1
30	621-1729-20	SH-BASE	1	58	750-7869-20	SENSOR SPRING	1
31	621-1742-20	UPPER GUIDE	1	59	750-7870-20	DR-SPRING F	2
32	621-1743-20	SHIFT LEVER	1	60	750-7871-20	DR-SPRING RA	1
33	621-1744-20	RACK	1	61	750-7872-20	DR-SPRING RB	1
34	621-1745-20	LOCK ARM L	1	62	750-7873-20	DR-SPRING C	1
35	621-1746-20	LOCK ARM R	1	63	750-6797-20	ROLLER SPRING L	1
36	621-1747-20	GEAR COVER	1	64	750-6798-20	ROLLER SPRING R	1
37	621-1748-20	POWER GEAR A	1	65	714-2003-8B	SCREW(M2x3)	2
38	621-1749-20	POWER GEAR B	1	66	780-2025-00	SCREW(M2x2.5)	3
39	621-1750-20	POWER GEAR C	1	67	781-1730-00	SCREW(M1.7x3)	1
40	621-1751-20	POWER GEAR D	1	68	803-4906-60	VINYL-COAT-WIRE(ORG)	1
41	621-1752-20	DISC STOPPER	1	69	816-2542-01	FLAT WIRE	1
42	621-1753-20	CLAMPER RING	1	70	816-2590-00	VINYL-COAT-WIRE(GRN)	1
43	621-1754-20	GEAR BASE	1	71	816-2591-00	VINYL-COAT-WIRE(YEL)	1
44	622-1571-21	ROLLER SHAFT	1	72	816-2592-00	VINYL-COAT-WIRE(BLUE)	1
45	624-0020-00	LEAD SCREW	1	73	816-2593-00	VINYL-COAT-WIRE(PUR)	1
46	629-0086-20	DAMPER F	2	74	966-1722-20	SH-RACK-ASSY	1
47	629-0087-20	DAMPER R	1	75	620-1866-20	DRIVE PLATE	1
48	716-1507-01	SCREW(M2x3)	3	76	969-0071-30	PICKUP-ASSY	1

BLOCK DIAGRAM



ELECTRICAL PARTS LIST

Main PWB(BM1) section

REF No.	PART No.	DESCRIPTION	REF No.	PART No.	DESCRIPTION	REF No.	PART No.	DESCRIPTION
C1	168-1042-78	16V 0.1uF	C29	046-6822-58	6800pF	R5	033-0000-05	1/10W 0 ohm
C2	163-1073-35	16V 100uF	C30	168-1042-78	16V 0.1uF	R6	033-5621-15	1/10W 5.6k ohm
C4	178-1052-78	1uF	C31	046-4712-58	470pF	R7	033-4731-15	1/10W 47k ohm
C5	042-0560-85	6.3V 100uF	C32	046-4712-58	470pF	R8	033-3341-15	1/10W 330k ohm
C6	178-1052-78	1uF	C33	168-1042-78	16V 0.1uF	R9	033-2231-15	1/10W 22k ohm
C8	178-1052-78	1uF	C34	168-4732-78	16V 0.047uF	R10	033-2231-15	1/10W 22k ohm
C10	168-1042-78	16V 0.1uF	C35	168-4732-78	16V 0.047uF	R11	033-2731-15	1/10W 27k ohm
C11	168-1042-78	16V 0.1uF	C36	045-1007-50	10pF	R12	033-4731-15	1/10W 47k ohm
C12	045-4701-50	47pF	C37	045-1007-50	10pF	R13	033-2731-15	1/10W 27k ohm
C13	046-1532-78	0.015uF	C38	168-1042-78	16V 0.1uF	R14	033-1531-15	1/10W 15k ohm
C14	168-1042-78	16V 0.1uF	C39	046-5622-58	5600pF	R15	033-2731-15	1/10W 27k ohm
C15	046-1032-78	0.01uF	C40	168-1042-78	16V 0.1uF	R16	033-8231-15	1/10W 82k ohm
C17	046-4722-58	4700pF	CCT1	050-0140-63	1/32W 47k ohm x4J	R17	033-2731-15	1/10W 27k ohm
C18	046-1522-58	1500pF	D1	001-0367-91	1SS226	R18	033-8231-15	1/10W 82k ohm
C19	168-1042-78	16V 0.1uF	IC1	051-6079-90	BA5830FP-E2	R19	033-1051-15	1/10W 1M ohm
C20	168-1042-78	16V 0.1uF	IC2	051-6399-00	TC94A15FG	R20	119-2221-15	1/10W 2.2k ohm
C21	046-6812-58	680pF	J101	074-1228-79	29P	R22	119-0000-05	1/10W 0 ohm JW
C22	168-1042-78	16V 0.1uF	J201	074-1138-65	15P	TM1	073-0768-90	TERMINAL
C23	046-1532-78	0.015uF	J301	074-1138-60	10P	X2	061-3534-90	16.92MHz
C24	168-1042-78	16V 0.1uF	Q1	131-1188-50	2SB1188PQR	PWB	039-2845-21	PWB(WITHOUT COMPONENT)
C25	045-6801-50	68pF	R1	117-6811-15	1/8W 680 ohm			
C26	168-1042-78	16V 0.1uF	R2	117-1001-15	1/8W 10 ohm			
C27	046-3332-78	0.033uF	R3	033-2211-15	1/10W 220 ohm			

LED PWB(BM2) section

REF No.	PART No.	DESCRIPTION	REF No.	PART No.	DESCRIPTION	REF No.	PART No.	DESCRIPTION
D1	001-7058-90	AN1105W-RR	Q1	060-4015-91	PS1192HB	S2	013-7413-50	LIMIT
D2	001-7058-90	AN1105W-RR	Q2	060-4015-91	PS1192HB	PWB	039-1944-21	PWB(WITHOUT COMPONENT)
J1	074-1138-60	10P	S1	013-7414-50	CHUCKING			