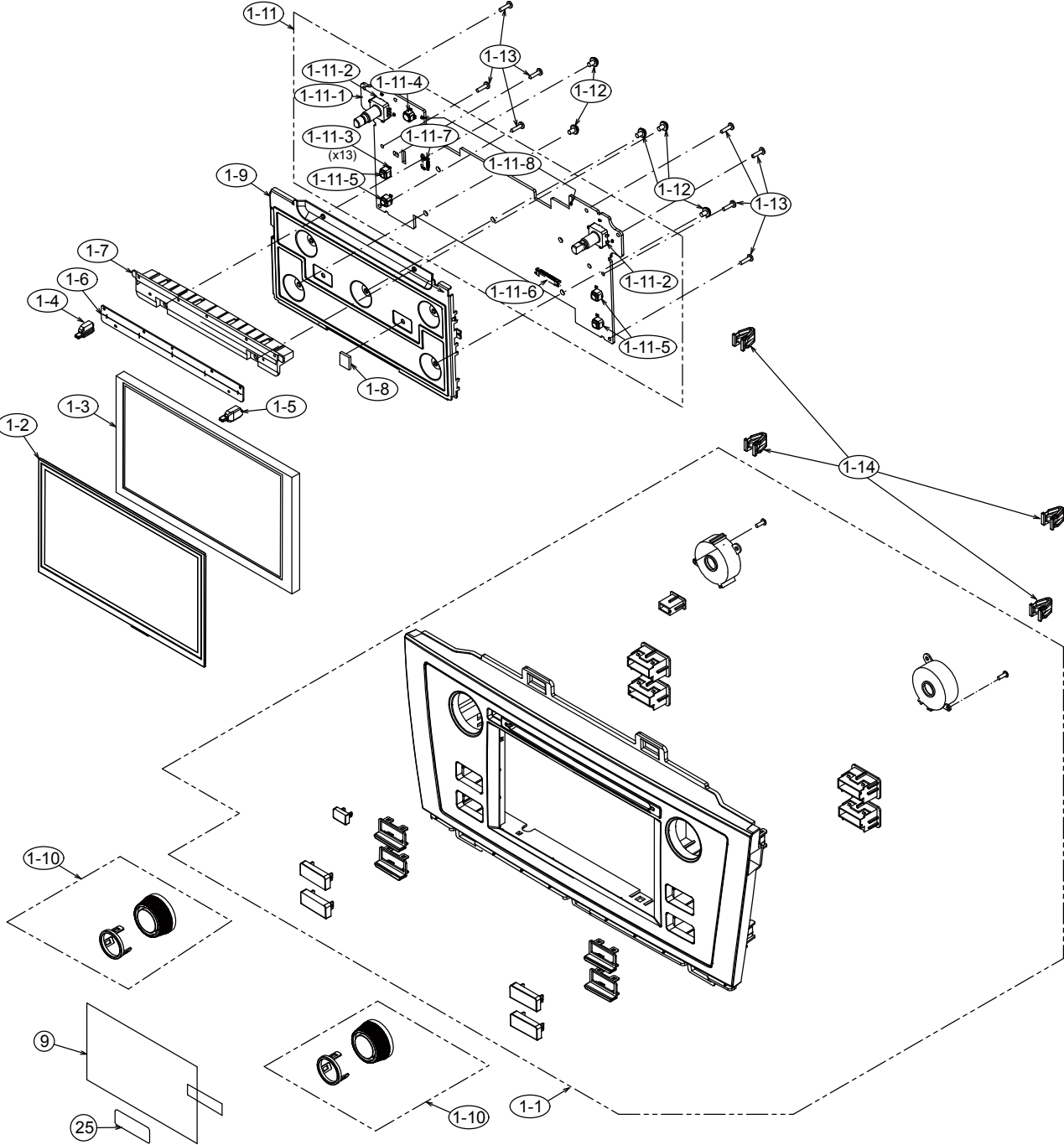
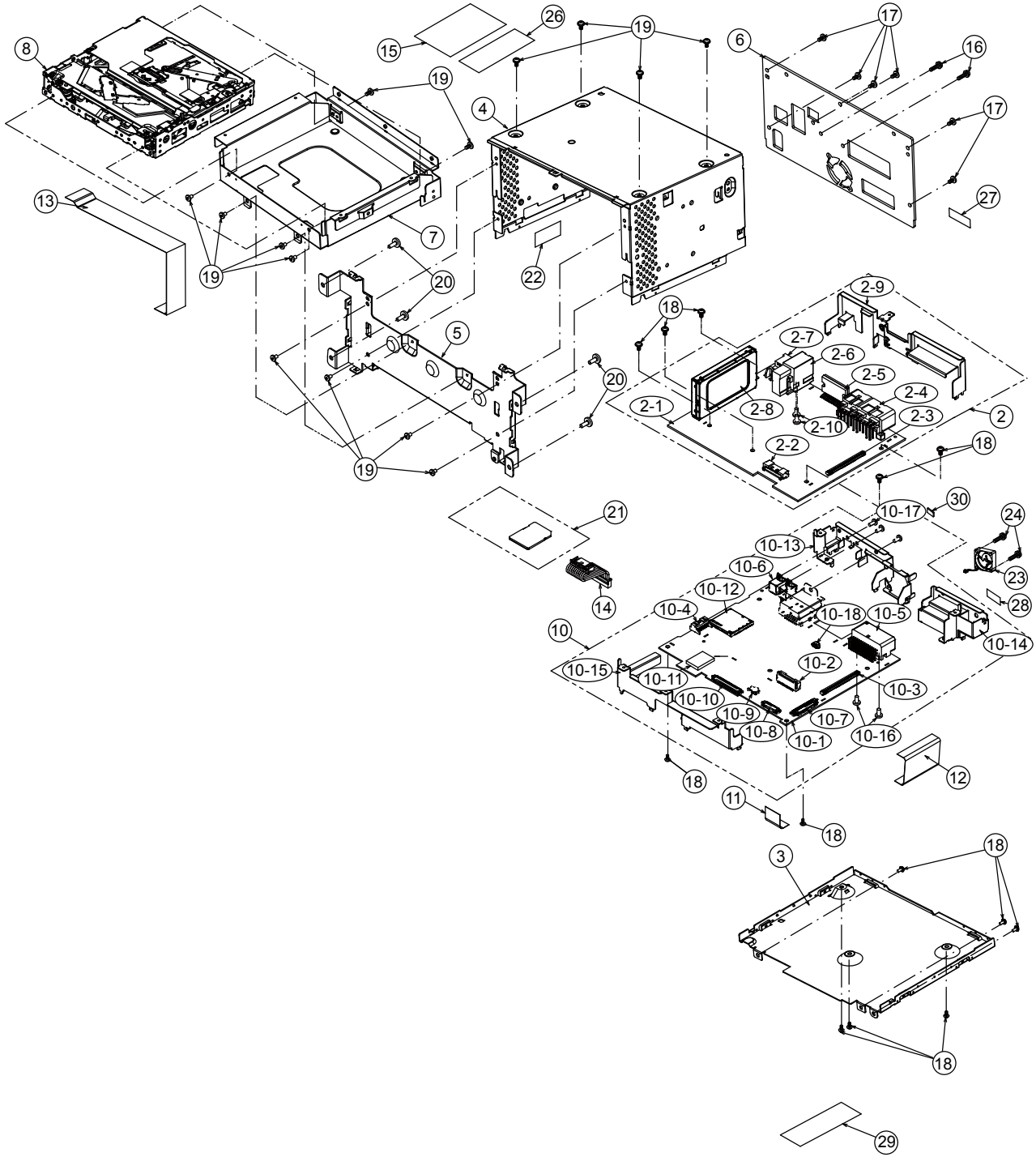


# EXPLODED VIEW / PARTS LIST

Panel section





NO.	PART NO.	DESCRIPTION	Q'TY	NO.	PART NO.	DESCRIPTION	Q'TY
1	-----	*Unused number	-	10-1	-----	NAVI PWB(426900-039)	1
1-1	940-8728-15	ESCUTCHEON-ASSY(PF3636IA)	1	10-2	076-6030-60	PLUG	1
	940-8728-18	ESCUTCHEON-ASSY(PF3636IB)	1	10-3	074-2248-80	OUTLET SOCKET	1
	940-8728-85	ESCUTCHEON-ASSY(PF3689IA)	1	10-4	076-6023-07	PLUG	1
	940-8728-88	ESCUTCHEON-ASSY(PF3689IB)	1	10-5	074-1302-28	OUTLET SOCKET	1
1-2	013-9745-00	TOUCH PANEL	1	10-6	074-4105-00	OUTLET SOCKET	1
1-3	379-0491-02	TFT	1	10-7	074-2248-40	OUTLET SOCKET	1
1-4	335-9524-02	GUIDE ILLUMI(L)	1	10-8	074-2248-30	OUTLET SOCKET	1
1-5	335-9525-02	GUIDE ILLUMI(R)	1	10-9	074-2249-04	OUTLET SOCKET	1
1-6	346-0314-01	LEATHER SHEET	1	10-10	074-2248-60	OUTLET SOCKET	1
1-7	335-9523-01	MOLDED PART	1	10-11	060-8162-90	BLUETOOTH MODUL	1
1-8	331-3038-50	EARTH PLATE	1	10-12	074-8017-91	OUTLET SOCKET	1
1-9	331-5532-03	PRESSED PART	1	10-13	331-5533-03	PRESSED PART	1
1-10	947-0834-01	KNOB-ASSY	2	10-14	331-5534-01	PRESSED PART	1
1-11	.990-0972A	SW-PWB-ASSY(3547A7-77)	1	10-15	331-5586-01	PRESSED PART	1
1-11-1	-----	SW PWB(428200-039)	1	10-16	778-3006-00	TAP-SCREW	2
1-11-2	016-0018-37	VR W/SHAFT	2	10-17	714-2606-8B	MACHINE SCREW	1
1-11-3	001-7141-90	DIODE	13	10-18	076-0569-02	PLUG	1
1-11-4	013-6202-52	TACT SWITCH	1	11	816-3135-55	FLAT WIRE	1
1-11-5	013-6201-53	TACT SWITCH	4	12	816-3105-55	FLAT WIRE	1
1-11-6	074-2248-30	OUTLET SOCKET	1	13	816-3167-57	FLAT WIRE	1
1-11-7	074-2240-60	OUTLET SOCKET	1	14	854-4667-52	EXTENSION LEAD	1
1-11-8	001-7109-92	DIODE	2	15	-----	SETPLATE(PF3636IA:113636-276)	1
1-12	716-0878-50	SPECIAL SCREW	5		-----	SETPLATE(PF3636IB:153320-276)	1
1-13	716-0778-52	SPECIAL SCREW	8		-----	SETPLATE(PF3689IA:113638-276)	1
1-14	335-8017-00	GARNISH CLIP	4		-----	SETPLATE(PF3689IB:153322-276)	1
2	.990-0974A	MAIN-PWB-ASSY(3636A7-75)	1	16	714-2614-8B	MACHINE SCREW	2
2-1	-----	MAIN PWB(425100-039)	1	17	714-2606-8B	MACHINE SCREW	6
2-2	076-6021-60	PLUG	1	18	716-0878-50	SPECIAL SCREW	13
2-3	074-2248-80	OUTLET SOCKET	1	19	714-2604-8B	MACHINE SCREW	14
2-4	074-1261-00	OUTLET SOCKET	1	20	716-1553-50	SPECIAL SCREW	4
2-5	051-2077-00	IC	1	21	.990-1003A	SD-ASSY(002310-065)	1
2-6	092-2260-00	ANT-RECEPT	1	22	347-9373-00	PAPER PART	1
2-7	-----	*Not mounted(ANT-RECEPT)	-	23	020-3066-00	DC-MOTOR	1
2-8	-----	*Not mounted(XM TUNER)	-	24	732-2614-1B	SEMS SCREW	2
2-9	331-5535-04	BRKT-C	1	25	-----	*Not mounted(XM LABEL)	-
2-10	778-3006-00	TAP-SCREW	2	26	-----	LABEL(HD)(075400-290)	1
3	311-2084-11	LOWER CASE	1	27	290-0548-61	LABEL(BR60)(PF3636IA)	1
4	310-2026-12	UPPER CASE	1		290-0968-01	LABEL(BR70)(PF3636IB)	1
5	309-1976-02	FRONT PLATE	1		290-0548-60	LABEL(BR62)(PF3689IA)	1
6	313-2194-12	HEAT SINK	1		290-0968-03	LABEL(BR72)(PF3689IB)	1
7	331-5531-01	PRESSED PART	1	28	347-9381-00	PROTECT-SHEET	1
8	929-5400-80	CD-MECH-MODULE	1	29	-----	*Not mounted(LABEL)	-
9	347-9449-02	PROTECTOR	1	30	-----	*Not mounted(GASKET)	-
10	.990-0973A	NAVI-PWB-ASSY(3636A7-78)	1				

\* The various software is different every model.

\* Refer to the service manual of No.E7622-02 about the electrical parts list.