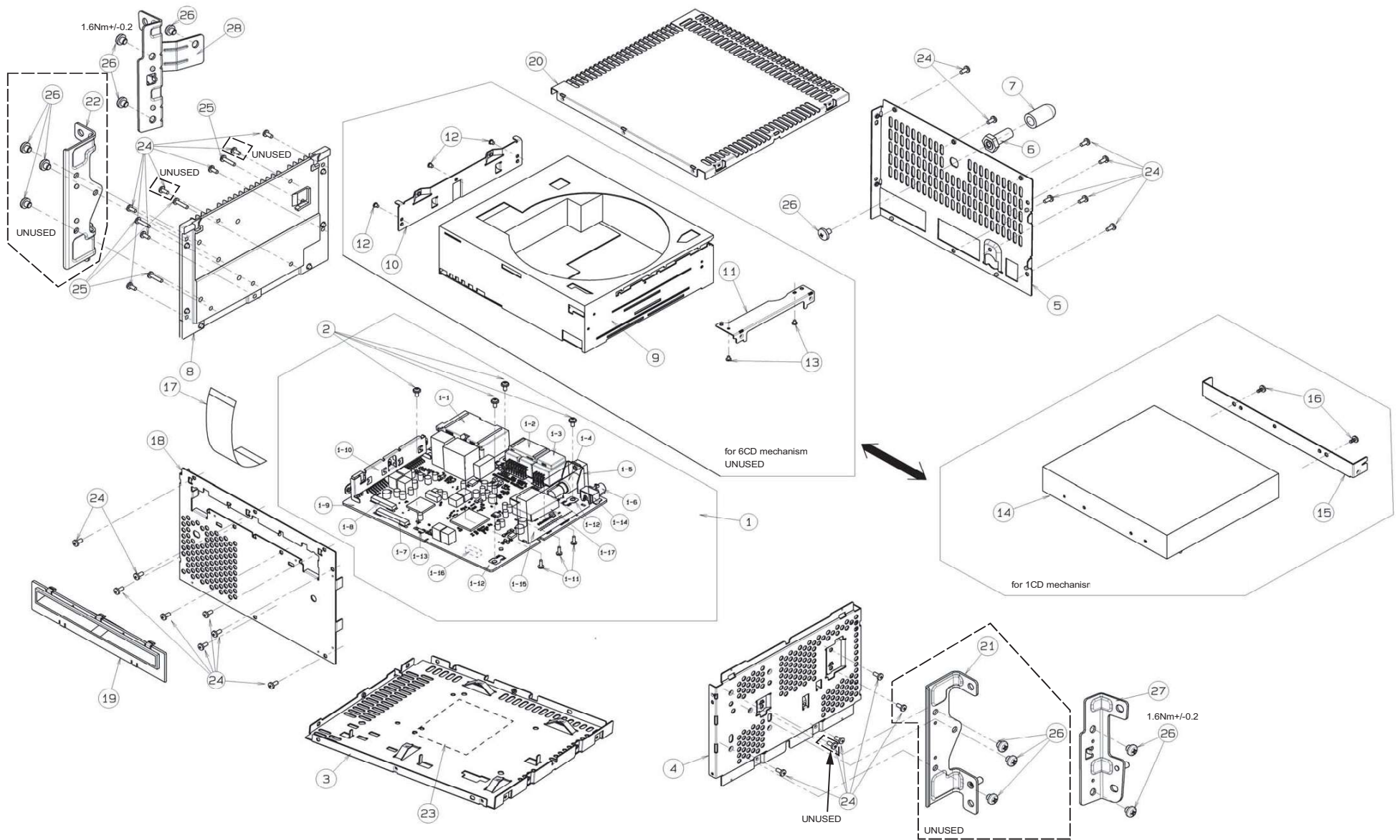


EXPLODED VIEW / PARTS LIST



NOTE
 1. (MTG-BRKT-ASSY)
 $1.6\text{Nm} \pm 0.2$

NO.	PART NO.	DESCRIPTION	Q'TY
1	-----	MAIN-PWB-ASSY	1
1-1	074-4032-24	OUTLET SOCKET	1
1-2	074-4032-16	OUTLET SOCKET	1
1-3	-----	OUTLET SOCKET(UNUSED)	-
1-4	092-2228-60	ANT-RECEPT	1
1-5	331-4433-00	ANT HOLDER	1
1-6	-----	ANT-RECEPT(UNUSED)	-
1-7	074-1237-77	OUTLET SOCKET	1
1-8	-----	OUTLET SOCKET(UNUSED)	-
1-9	-----	PWB(369900-039)	1
1-10	331-4432-01	IC HOLDER	1
1-11	716-3617-00	SPECIAL SCREW	2
1-12	073-0762-90	TERMINAL	3
1-13	073-0768-90	TERMINAL	1
1-14	-----	ANT BRKT(UNUSED)	-
1-15	-----	TUNER PACK(UNUSED)	-
1-16	076-0484-58	PLUG	1
1-17	331-5038-00	SHIELD CASE	1
2	716-0878-50	SPECIAL SCREW	4
3	304-0513-00	LOWER-CVR	1
4	305-0349-10	SIDE-CVR	1
5	307-0783-03	REAR-CVR	1
6	716-3607-00	REAR BOLT	1

NO.	PART NO.	DESCRIPTION	Q'TY
7	345-6054-00	RUBBER PART	1
8	313-2020-02	HEAT SINK	1
9	-----	6CD-MECH-MODULE(UNUSED)	-
10	-----	MECH-BRKT(L)(UNUSED)	-
11	-----	MECH-BRKT(R)(UNUSED)	-
12	-----	SPECIAL SCREW(UNUSED)	-
13	-----	SPECIAL SCREW(UNUSED)	-
14	929-5040-80	1CD-MECH-MODULE	1
15	331-4431-10	MECH-BRKT(1CD)	1
16	714-2603-89	MACHINE SCREW	2
17	816-4066-50	FLAT WIRE	1
18	309-0847-02	FRONT PLATE	1
19	335-8124-01	DISC GUIDE	1
20	303-0494-00	UPPER-CVR	1
21	-----	MTG-BRKT-ASSY(R)(UNUSED)	-
22	-----	MTG-BRKT-ASSY(L)(UNUSED)	-
23	276-0736-19	SETPLATE	1
24	714-2606-8B	MACHINE SCREW	23
25	714-2612-8H	MACHINE SCREW	4
26	714-5006-8B	MACHINE SCREW	6
27	300-8180-02	MTG-BRKT-ASSY R	1
28	300-8179-02	MTG-BRKT-ASSY L	1

ELECTRICAL PARTS LIST

MAIN PWB(B1) section

REF No.	PART No.	DESCRIPTION	REF No.	PART No.	DESCRIPTION	REF No.	PART No.	DESCRIPTION
ANT102	-----	(UNUSED)	C210	168-1042-78	16V 0.1uF K	C286	168-2722-55	2700pF K
ANT104	092-2228-60	ANT-RECEPT	C211	046-2232-78	0.022uF K B	C287	178-1055-79	1uF
BL101	-----	(UNUSED)	C212	046-2232-78	0.022uF K B	C288	166-2211-50	220pF CH
C101	045-2201-50	22pF JH	C213	046-2232-78	0.022uF K B	C290	-----	(UNUSED)
C102	046-1022-58	50V 1000pF	C214	046-2232-78	0.022uF K B	C291	-----	(UNUSED)
C103	046-1022-58	50V 1000pF	C215	046-1042-78	16V 0.1uF	C292	046-1042-78	16V 0.1uF
C104	045-4796-50	4.7pF JH	C216	168-2232-55	0.022uF K	C293	168-1042-78	16V 0.1uF K
C105	-----	(UNUSED)	C217	166-9097-50	9pF +/-0.5pF CH	C294	168-1042-78	16V 0.1uF K
C106	045-1201-50	12pF JH	C218	168-1042-78	16V 0.1uF K	C295	046-1042-78	16V 0.1uF
C107	-----	(UNUSED)	C219	166-9097-50	9pF +/-0.5pF CH	C299	166-2211-50	220pF CH
C108	-----	(UNUSED)	C220	-----	(UNUSED)	C301	045-1011-50	100pF JH
C109	045-4701-50	47pF CH	C221	165-4753-55	35V 4.7uF	C302	046-1042-78	16V 0.1uF
C110	046-1022-58	50V 1000pF	C222	168-1042-78	16V 0.1uF K	C303	-----	(UNUSED)
C111	-----	(UNUSED)	C223	165-2263-15	6.3V 22uF	C304	046-1032-78	16V 0.01uF
C112	045-1801-50	18pF JH	C224	168-4732-78	0.047uF K	C379	165-1073-35	16V 100uF
C113	-----	(UNUSED)	C225	-----	(UNUSED)	C400	-----	(UNUSED)
C114	-----	(UNUSED)	C226	046-1042-78	16V 0.1uF	C401	042-1767-90	16V 470uF
C115	045-2701-50	27pF JH	C227	-----	(UNUSED)	C402	178-1042-78	0.1uF
C116	-----	(UNUSED)	C228	165-1073-15	6.3V 100uF	C403	-----	(UNUSED)
C117	-----	(UNUSED)	C230	043-6400-90	16V 4.7uF K	C404	178-1042-78	0.1uF
C118	046-3922-58	3900pF K B	C231	046-1042-78	16V 0.1uF	C405	046-1042-78	16V 0.1uF
C119	046-1022-58	50V 1000pF	C232	168-2232-55	0.022uF K	C406	046-1042-78	16V 0.1uF
C120	-----	(UNUSED)	C233	046-2232-78	0.022uF K B	C407	165-1063-35	16V 10uF
C121	-----	(UNUSED)	C234	-----	(UNUSED)	C408	046-1042-78	16V 0.1uF
C122	046-1032-78	16V 0.01uF	C235	043-6400-90	16V 4.7uF K	C409	046-1042-78	16V 0.1uF
C123	-----	(UNUSED)	C236	-----	(UNUSED)	C410	168-1042-78	16V 0.1uF K
C124	046-1032-78	16V 0.01uF	C240	165-2263-15	6.3V 22uF	C412	046-1042-78	16V 0.1uF
C125	-----	(UNUSED)	C241	-----	(UNUSED)	C413	046-1042-78	16V 0.1uF
C126	-----	(UNUSED)	C242	046-1042-78	16V 0.1uF	C414	042-1767-90	16V 470uF
C127	-----	(UNUSED)	C243	168-1052-78	16V 1uF K	C415	178-1042-78	0.1uF
C128	-----	(UNUSED)	C244	168-2232-55	0.022uF K	C416	-----	(UNUSED)
C129	-----	(UNUSED)	C245	168-2232-55	0.022uF K	C417	178-2222-78	2200pF
C130	-----	(UNUSED)	C246	-----	(UNUSED)	C418	178-2222-78	2200pF
C131	-----	(UNUSED)	C247	165-4763-15	6.3V 47uF	C419	178-2222-78	2200pF
C132	-----	(UNUSED)	C248	168-2222-55	2200pF K	C420	178-2222-78	2200pF
C133	046-3322-58	3300pF K B	C249	168-2222-55	2200pF K	C421	178-2222-78	2200pF
C134	-----	(UNUSED)	C250	046-1042-78	16V 0.1uF	C422	178-2222-78	2200pF
C135	046-2232-78	0.022uF K B	C251	046-1042-78	16V 0.1uF	C423	178-2222-78	2200pF
C136	-----	(UNUSED)	C252	046-4712-58	470pF K B	C424	178-2222-78	2200pF
C137	-----	(UNUSED)	C253	046-1042-78	16V 0.1uF	C425	-----	(UNUSED)
C138	-----	(UNUSED)	C254	046-2232-78	0.022uF K B	C426	-----	(UNUSED)
C139	046-1022-58	50V 1000pF	C255	046-1042-78	16V 0.1uF	C427	-----	(UNUSED)
C140	-----	(UNUSED)	C256	033-0000-05	1/16W 0 ohm	C428	-----	(UNUSED)
C141	-----	(UNUSED)	C257	-----	(UNUSED)	C429	168-1022-55	1000pF K
C142	046-2232-78	0.022uF K B	C258	033-0000-05	1/16W 0 ohm	C430	168-1042-78	16V 0.1uF K
C143	163-2273-25	10V 220uF	C259	046-3322-58	3300pF K B	C431	-----	(UNUSED)
C144	-----	(UNUSED)	C260	-----	(UNUSED)	C432	-----	(UNUSED)
C145	168-2242-58	0.22uF K	C261	046-3322-58	3300pF K B	C433	165-2263-15	6.3V 22uF
C146	046-2232-78	0.022uF K B	C262	046-3322-58	3300pF K B	C434	165-2263-35	16V 22uF
C147	046-2232-78	0.022uF K B	C263	046-3322-58	3300pF K B	C435	168-3332-78	0.033uF K
C148	046-2232-78	0.022uF K B	C264	168-1052-78	16V 1uF K	C436	043-6400-90	16V 4.7uF K
C149	046-2232-78	0.022uF K B	C265	166-2211-50	220pF CH	C437	178-2222-78	2200pF
C150	-----	(UNUSED)	C266	-----	(UNUSED)	C438	178-2222-78	2200pF
C151	-----	(UNUSED)	C267	042-2273-25	10V 220uF M	C440	-----	(UNUSED)
C152	-----	(UNUSED)	C268	-----	(UNUSED)	C441	178-2222-78	2200pF
C153	-----	(UNUSED)	C269	-----	(UNUSED)	C442	178-2222-78	2200pF
C154	-----	(UNUSED)	C270	-----	(UNUSED)	C443	178-2222-78	2200pF
C155	-----	(UNUSED)	C271	168-1052-78	16V 1uF K	C444	176-1011-59	100pF SL
C156	-----	(UNUSED)	C272	-----	(UNUSED)	C445	176-1011-59	100pF SL
C157	-----	(UNUSED)	C273	168-1052-78	16V 1uF K	C446	178-2222-78	2200pF
C171	046-1022-58	50V 1000pF	C274	033-0000-05	1/16W 0 ohm	C447	168-1045-56	25V 0.1uF Z
C172	-----	(UNUSED)	C275	-----	(UNUSED)	C448	165-2263-15	6.3V 22uF
C191	-----	(UNUSED)	C276	166-2211-50	220pF CH	C449	178-2222-78	2200pF
C201	165-4753-55	35V 4.7uF	C277	-----	(UNUSED)	C450	178-2222-78	2200pF
C202	165-4753-55	35V 4.7uF	C278	166-2211-50	220pF CH	C451	178-2222-78	2200pF
C203	-----	(UNUSED)	C279	168-1052-78	16V 1uF K	C452	178-2222-78	2200pF
C204	-----	(UNUSED)	C280	178-1055-79	1uF	C453	-----	(UNUSED)
C205	168-1052-78	16V 1uF K	C281	168-2722-55	2700pF K	C454	166-1011-50	100pF CH
C206	046-1042-78	16V 0.1uF	C282	168-2722-55	2700pF K	C455	168-2245-79	0.22uF Z
C207	046-1042-78	16V 0.1uF	C283	178-1055-79	1uF	C457	178-2222-78	2200pF
C208	046-1042-78	16V 0.1uF	C284	178-1055-79	1uF	C458	-----	(UNUSED)
C209	046-1042-78	16V 0.1uF	C285	168-2722-55	2700pF K	C459	165-2263-35	16V 22uF

REF No.	PART No.	DESCRIPTION	REF No.	PART No.	DESCRIPTION
C460	165-2263-35	16V 22uF	D411	-----	(UNUSED)
C461	046-1042-78	16V 0.1uF	D412	-----	(UNUSED)
C462	165-2263-35	16V 22uF	D414	001-0516-90	MA111
C463	046-1042-78	16V 0.1uF	D416	001-0516-90	MA111
C464	165-1063-35	16V 10uF	D418	-----	(UNUSED)
C499	-----	(UNUSED)	D419	001-4313-52	HZU7CZL
C500	-----	(UNUSED)	D420	001-0516-90	MA111
C503	165-2253-65	50V 2.2uF	D422	-----	(UNUSED)
C504	-----	(UNUSED)	D423	-----	(UNUSED)
C505	178-2255-79	2.2uF	D501	001-4312-21	02D23.9Z TPH3-F
C506	178-2255-79	2.2uF	D502	001-0516-90	MA111
C507	178-2255-79	2.2uF	D505	001-1304-90	DAN202U
C508	178-2255-79	2.2uF	D601	-----	(UNUSED)
C509	165-2263-55	35V 22uF	D603	-----	(UNUSED)
C510	043-0499-51	50V 0.1uF J	D9001	-----	(UNUSED)
C511	042-1717-00	16V 3300uF	IC101	051-4025-90	TEF7000
C515	046-1822-38	1800pF K B	IC201	-----	SAF7741HV/ N127(CENTER PAD SOLDER)(674710- 051)
C516	046-1822-38	1800pF K B	IC401	051-3510-01	TDA3681JR/N2C
C519	178-4742-78	0.47uF	IC402	-----	(UNUSED)
C520	046-1822-38	1800pF K B	IC403	051-3584-90	BU33TA2WHFV-TR
C521	046-1822-38	1800pF K B	IC404	051-3577-90	S1206B33U3T1G
C522	178-4742-78	0.47uF	IC405	051-3218-90	TA76431F
C524	178-4742-78	0.47uF	IC406	051-3598-90	BU15TA2WHFV
C525	168-1052-78	16V 1uF K	IC407	051-6653-80	SN65HVD1040QDR Q1
C527	178-4742-78	0.47uF	IC408	-----	(UNUSED)
C533	-----	(UNUSED)	IC501	051-2068-00	TDA7562B
C534	-----	(UNUSED)	IC503	-----	(UNUSED)
C535	-----	(UNUSED)	IC504	-----	(UNUSED)
C536	-----	(UNUSED)	IC601	-----	(UNUSED)
C542	-----	(UNUSED)	IC602	-----	uPD70F3351GC- R107 8E-A(Combination software:Software should be written on production)(031610- 052)
C544	-----	(UNUSED)	IC603	051-5423-08	S-80929CLMC-G6Z
C545	-----	(UNUSED)	IC604	-----	BR24516FVT- WTR(EEPROM Date:Software should be written on production)(942680- 051)
C547	-----	(UNUSED)	J302	074-1237-77	27P
C549	-----	(UNUSED)	J401	074-4032-24	24P
C553	-----	(UNUSED)	J402	-----	(UNUSED)
C554	-----	(UNUSED)	J403	074-4032-16	16P
C555	-----	(UNUSED)	J601	076-0484-58	5pin
C556	-----	(UNUSED)	J602	-----	(UNUSED)
C557	-----	(UNUSED)	L101	010-3406-56	3.3uH J
C558	-----	(UNUSED)	L102	010-3062-54	290nH
C560	-----	(UNUSED)	L103	010-3439-50	047uH
C563	-----	(UNUSED)	L104	010-3062-54	290nH
C564	-----	(UNUSED)	L105	010-3439-51	1.8uH
C600	166-1801-50	18pF CH	L106	010-3062-53	0.215uH
C601	-----	(UNUSED)	L107	010-2290-52	330uH
C602	-----	(UNUSED)	L108	010-2290-52	330uH
C603	-----	(UNUSED)	L109	-----	(UNUSED)
C604	165-4753-55	35V 4.7uF	L110	010-2285-64	1k ohm/100MHz
C605	165-4753-55	35V 4.7uF	L201	010-2285-64	1k ohm/100MHz
C607	168-1042-78	16V 0.1uF K	L202	010-2285-64	1k ohm/100MHz
C608	042-4022-90	6.3V 1000uF	L203	010-2285-64	1k ohm/100MHz
C609	042-4022-90	6.3V 1000uF	L204	010-3132-90	600 ohm/100MHz
C610	168-1052-78	16V 1uF K	L205	010-2285-64	1k ohm/100MHz
C611	168-1022-55	1000pF K	L206	010-2285-64	1k ohm/100MHz
C612	168-1042-78	16V 0.1uF K	L207	010-2285-64	1k ohm/100MHz
C613	046-1032-78	16V 0.01uF	L208	010-2285-64	1k ohm/100MHz
C616	046-1042-78	16V 0.1uF	L209	010-2285-64	1k ohm/100MHz
C680	-----	(UNUSED)	L292	010-2285-64	1k ohm/100MHz
C9001	-----	(UNUSED)	L294	010-2285-64	1k ohm/100MHz
C9001	-----	(UNUSED)	L295	010-2285-64	1k ohm/100MHz
C9002	-----	(UNUSED)	L296	010-2285-64	1k ohm/100MHz
C9002	-----	(UNUSED)	L401	010-8049-00	145uH
C9003	-----	(UNUSED)	L402	010-2285-64	1k ohm/100MHz
D101	001-9013-90	BA891	L601	010-3105-62	1k ohm/100MHz
D102	001-9013-90	BA891	L602	010-3105-62	1k ohm/100MHz
D104	-----	(UNUSED)	Q104	-----	(UNUSED)
D105	-----	(UNUSED)	Q105	-----	(UNUSED)
D106	-----	(UNUSED)	Q201	125-7021-90	RQ1A060ZPTR
D400	-----	(UNUSED)	Q400	192-4081-60	2SC4081UBTL
D401	-----	(UNUSED)	Q401	192-4081-60	2SC4081UBTL
D402	001-0592-00	RM4Z	Q402	-----	(UNUSED)
D403	001-4326-50	RSB27F2T106	Q403	-----	(UNUSED)
D404	001-0516-90	MA111	Q405	-----	(UNUSED)
D406	001-1304-90	DAN202U	Q406	-----	(UNUSED)
D409	-----	(UNUSED)	Q407	103-2394-00	2SD2394
D410	-----	(UNUSED)	Q408	-----	(UNUSED)
			Q410	-----	(UNUSED)
			Q412	125-9015-92	RN4902
			Q413	-----	(UNUSED)
			Q414	-----	(UNUSED)
			Q418	125-9015-92	RN4902
			Q421	-----	(UNUSED)
			Q424	-----	(UNUSED)
			Q502	125-9015-92	RN4902
			Q504	125-2046-91	DTC114EUBTL
			Q510	-----	(UNUSED)
			Q511	-----	(UNUSED)
			Q512	-----	(UNUSED)
			Q513	-----	(UNUSED)
			Q601	-----	(UNUSED)
			Q602	-----	(UNUSED)
			R101	033-4741-15	1/16W 470k ohm J
			R103	033-4741-15	1/16W 470k ohm J
			R104	033-3311-15	1/16W 330 ohm J
			R105	033-1811-15	1/16W 180 ohm J
			R106	-----	(UNUSED)
			R107	033-5601-15	1/16W 56 ohm J
			R109	-----	(UNUSED)
			R110	-----	(UNUSED)
			R111	-----	(UNUSED)
			R113	119-1001-15	1/10W 10 ohm
			R114	119-1001-15	1/10W 10 ohm
			R116	-----	(UNUSED)
			R117	-----	(UNUSED)
			R118	-----	(UNUSED)
			R120	-----	(UNUSED)
			R121	-----	(UNUSED)
			R122	-----	(UNUSED)
			R123	033-2231-15	1/16W 22k ohm J
			R124	-----	(UNUSED)
			R125	-----	(UNUSED)
			R126	-----	(UNUSED)
			R127	-----	(UNUSED)
			R128	-----	(UNUSED)
			R129	033-3921-15	1/16W 3.9k ohm J
			R130	-----	(UNUSED)
			R131	-----	(UNUSED)
			R132	033-0000-05	1/16W 0 ohm
			R133	033-0000-05	1/16W 0 ohm
			R134	033-0000-05	1/16W 0 ohm
			R135	033-0000-05	1/16W 0 ohm
			R136	033-0000-05	1/16W 0 ohm
			R147	033-0000-05	1/16W 0 ohm
			R148	033-0000-05	1/16W 0 ohm
			R191	033-4701-15	1/16W 47 ohm J
			R201	119-1031-15	1/10W 10k ohm
			R202	033-0000-05	1/16W 0 ohm
			R203	033-0000-05	1/16W 0 ohm
			R205	119-0000-05	1/10W 0 ohm JW
			R207	119-1031-15	1/10W 10k ohm
			R208	119-1031-15	1/10W 10k ohm
			R211	119-0000-05	1/10W 0 ohm JW
			R212	119-2201-15	1/10W 22 ohm
			R216	119-4731-15	1/10W 47k ohm
			R217	119-0000-05	1/10W 0 ohm JW
			R218	119-0000-05	1/10W 0 ohm JW
			R219	-----	(UNUSED)
			R220	119-1001-15	1/10W 10 ohm

REF No.	PART No.	DESCRIPTION	REF No.	PART No.	DESCRIPTION
R221	033-0000-05	1/16W 0 ohm	R436	-----	(UNUSED)
R222	119-4731-15	1/10W 47k ohm	R439	-----	(UNUSED)
R223	119-0000-05	1/10W 0 ohm JW	R440	-----	(UNUSED)
R224	119-0000-05	1/10W 0 ohm JW	R441	-----	(UNUSED)
R225	119-1241-15	1/10W 120k ohm	R442	-----	(UNUSED)
R226	-----	(UNUSED)	R443	-----	(UNUSED)
R227	-----	(UNUSED)	R444	-----	(UNUSED)
R228	119-0000-05	1/10W 0 ohm JW	R445	-----	(UNUSED)
R229	-----	(UNUSED)	R446	-----	(UNUSED)
R230	033-1011-15	1/16W 100 ohm J	R448	119-0000-05	1/10W 0 ohm JW
R231	033-1011-15	1/16W 100 ohm J	R449	119-1031-15	1/10W 10k ohm
R232	032-0140-99	1/10W 39k ohm F	R451	033-1021-15	1/16W 1k ohm J
R233	033-0000-05	1/16W 0 ohm	R456	-----	(UNUSED)
R234	033-0000-05	1/16W 0 ohm	R457	119-2241-15	1/10W 220k ohm
R235	032-0140-99	1/10W 39k ohm F	R458	119-1021-15	1/10W 1k ohm
R236	032-0140-95	1/10W 20k ohm F	R459	119-2231-15	1/10W 22k ohm
R237	032-0140-95	1/10W 20k ohm F	R460	-----	(UNUSED)
R238	032-0140-95	1/10W 20k ohm F	R461	-----	(UNUSED)
R239	032-0140-95	1/10W 20k ohm F	R463	119-1041-15	1/10W 100k ohm
R240	119-2031-15	1/10W 20k ohm	R464	119-1041-15	1/10W 100k ohm
R241	119-2031-15	1/10W 20k ohm	R465	119-1041-15	1/10W 100k ohm
R242	119-1001-15	1/10W 10 ohm	R466	119-5621-15	1/10W 5.6k ohm
R243	032-0140-89	1/10W 47k ohm F	R467	-----	(UNUSED)
R244	119-0000-05	1/10W 0 ohm JW	R468	-----	(UNUSED)
R245	033-1011-15	1/16W 100 ohm J	R469	119-1041-15	1/10W 100k ohm
R246	032-0140-89	1/10W 47k ohm F	R470	119-1041-15	1/10W 100k ohm
R247	032-0140-89	1/10W 47k ohm F	R471	033-1011-15	1/16W 100 ohm J
R248	119-0000-05	1/10W 0 ohm JW	R472	119-1231-15	1/10W 12k ohm
R249	119-1041-15	1/10W 100k ohm	R473	-----	(UNUSED)
R251	032-0140-89	1/10W 47k ohm F	R474	-----	(UNUSED)
R252	032-0140-62	1/10W 1k ohm F	R475	116-2011-15	1/4W 200 ohm
R253	032-0140-62	1/10W 1k ohm F	R476	116-2011-15	1/4W 200 ohm
R254	032-0140-62	1/10W 1k ohm F	R477	116-2011-15	1/4W 200 ohm
R255	032-0140-62	1/10W 1k ohm F	R478	-----	(UNUSED)
R256	032-0140-99	1/10W 39k ohm F	R479	-----	(UNUSED)
R257	033-0000-05	1/16W 0 ohm	R480	-----	(UNUSED)
R258	032-0140-99	1/10W 39k ohm F	R501	033-0000-05	1/16W 0 ohm
R259	119-0000-05	1/10W 0 ohm JW	R502	033-0000-05	1/16W 0 ohm
R260	119-1041-15	1/10W 100k ohm	R503	033-8221-15	1/16W 8.2k ohm J
R261	119-1001-15	1/10W 10 ohm	R504	-----	(UNUSED)
R263	033-1031-15	1/16W 10k ohm J	R505	-----	(UNUSED)
R264	-----	(UNUSED)	R507	033-1021-15	1/16W 1k ohm J
R291	117-0000-05	1/8W 0 ohm JW	R509	033-1021-15	1/16W 1k ohm J
R301	033-8221-15	1/16W 8.2k ohm J	R512	033-8221-15	1/16W 8.2k ohm J
R400	116-2011-15	1/4W 200 ohm	R513	119-4721-15	1/10W 4.7k ohm
R401	119-1041-15	1/10W 100k ohm	R514	119-2231-15	1/10W 22k ohm
R402	-----	(UNUSED)	R515	033-8221-15	1/16W 8.2k ohm J
R403	-----	(UNUSED)	R516	033-8221-15	1/16W 8.2k ohm J
R404	033-1021-15	1/16W 1k ohm J	R517	033-3331-15	1/16W 33k ohm J
R405	033-1021-15	1/16W 1k ohm J	R518	033-3331-15	1/16W 33k ohm J
R406	033-1021-15	1/16W 1k ohm J	R519	033-3331-15	1/16W 33k ohm J
R407	-----	(UNUSED)	R520	033-3331-15	1/16W 33k ohm J
R408	-----	(UNUSED)	R521	033-1021-15	1/16W 1k ohm J
R409	032-0140-56	1/10W 12k ohm F	R523	033-1021-15	1/16W 1k ohm J
R410	032-0140-80	1/10W 18k ohm F	R529	119-1031-15	1/10W 10k ohm
R411	-----	(UNUSED)	R530	119-1021-15	1/10W 1k ohm
R412	033-3321-15	1/16W 3.3k ohm J	R		

EXPLODED VIEW/PARTS LIST

NO.	PART NO.	DESCRIPTION	Q'TY	NO.	PART NO.	DESCRIPTION	Q'TY
1	966-1722-21	SH-RACK-ASSY	1	42	621-1748-20	POWER GEAR A	1
2	969-0075-30	PICK UP-ASSY	1	43	621-1749-20	POWER GEAR B	1
3	-----	SENSOR-PWB-ASSY(5000AI-95)	1	44	621-1750-20	POWER GEAR C	1
4	-----	MAIN-PWB-ASSY(5040AH-97)	1	45	621-1751-20	POWER GEAR D	1
5	-----	SP DC-MOTOR(152730-020)	1	46	621-1752-20	DISC STOPPER	1
6	-----	PWR DC-MOTOR(251200-020)	1	47	621-1753-20	CLAMPER RING	1
7	345-5476-20	CUSHION RUBBER	1	48	621-1754-20	GEAR BASE	1
8	620-1023-23	CLAMPER PLATE	1	49	622-1570-21	DAMPER PIN	3
9	620-1026-21	SPRING PLATE	1	50	622-1571-21	ROLLER SHAFT	1
10	620-1596-23	CLAMPER LINK	1	51	624-3059-00	LEAD SCREW	1
11	620-1862-20	UPPER CHASSIS	1	52	629-0086-20	DAMPER F	2
12	620-1866-20	DRIVE PLATE	1	53	629-0087-20	DAMPER R	1
13	620-1752-20	SENSOR ARM	1	54	714-2003-8B	MACHINE SCREW	2
14	620-1753-20	ID-LOCK PLATE	1	55	716-1507-01	SCREW	3
15	620-1868-20	LOWER CHASSIS	1	56	716-1670-01	SPECIAL SCREW	4
16	-----	MOTOR GEAR(060721-621)	1	57	716-1733-01	SCREW	2
17	621-0608-21	SECOND GEAR	1	58	716-3469-01	SPECIAL SCREW	2
18	621-0609-21	BASE GEAR	1	59	716-3473-01	SPECIAL SCREW	1
19	621-0610-21	IDLE GEAR A	1	60	716-3551-00	SPECIAL SCREW	2
20	621-0611-21	IDLE GEAR B	1	61	750-6797-20	ROLLER SPRING L	1
21	621-0612-22	ROLLER GEAR A	1	62	750-6798-20	ROLLER SPRING R	1
22	621-0620-20	THREAD GEAR A	1	63	750-7865-20	SHIFT SPRING	1
23	621-0621-20	THREAD GEAR B	1	64	750-7866-20	RACK SPRING	1
24	621-0623-24	LS-HOLDER	1	65	750-7867-20	CLAMPER SPRING	1
25	621-0624-22	GUIDE RAIL	1	66	750-7868-20	ID-LOCK SPRING	1
26	-----	TURN TABLE(063820-621)	1	67	750-7869-20	SENSOR SPRING	1
27	621-0711-21	LOADING ROLLER	2	68	750-7870-20	DR-SPRING F	2
28	621-0718-21	ROLLER GUIDE	1	69	750-7871-20	DR-SPRING RA	1
29	621-0719-20	ROLLER GEAR B	1	70	750-7872-20	DR-SPRING RB	1
30	621-0720-20	ROLLER GEAR C	1	71	750-7873-20	DR-SPRING C	1
31	621-0721-20	ROLLER GEAR D	1	72	780-2025-00	SCREW	3
32	621-0728-20	STOPPER LINK	1	73	781-1730-00	SCREW	1
33	621-1719-21	IDLE CASE	1	74	803-4906-60	VINYL-COAT-WIRE	1
34	621-1726-21	ROLLER SLEEVE	2	75	816-2542-01	FLAT WIRE	1
35	621-1729-21	SH-BASE	1	76	816-2590-00	SPECIAL LEAD	1
36	621-1742-20	UPPER GUIDE	1	77	816-2591-00	SPECIAL LEAD	1
37	621-1743-20	SHIFT LEVER	1	78	816-2592-00	SPECIAL LEAD	1
38	621-1744-20	RACK	1	79	816-2593-00	SPECIAL LEAD	1
39	621-1745-20	LOCK ARM L	1	80	SMA-182-200	SPINDLE MOTOR ASSY	1
40	621-1746-20	LOCK ARM R	1	81	SMA-197-100	POWER MOTOR ASSY	1
41	621-1747-20	GEAR COVER	1				

ELECTRICAL PARTS LIST

MAIN PWB section

REF No.	PART No.	DESCRIPTION	REF No.	PART No.	DESCRIPTION	REF No.	PART No.	DESCRIPTION
C3	168-1052-78	16V 1uF K	C51	045-1201-50	12pF J CH	R13	033-3341-15	1/16W 330k ohm J
C6	168-1052-78	16V 1uF K	C58	045-6097-50	6 +/-0.5pF CH	R14	033-0000-05	1/16W 0 ohm
C7	042-0560-85	6.3V 100uF	C64	165-4763-15	6.3V 47uF	R15	033-4731-15	1/16W 47k ohm J
C8	168-1052-78	16V 1uF K	C68	168-1042-78	16V 0.1uF K	R16	033-3331-15	1/16W 33k ohm J
C10	046-1042-78	16V 0.1uF	C74	165-4763-15	6.3V 47uF	R17	119-0000-05	1/10W 0 ohm JW
C11	168-1042-78	16V 0.1uF K	C75	168-1042-78	16V 0.1uF K	R18	033-1051-15	1/16W 1M ohm J
C14	046-4722-58	4700pF K B	C77	046-1042-78	16V 0.1uF	R19	033-2221-15	1/16W 2.2k ohm J
C17	165-1073-35	16V 100uF	C78	168-1042-78	16V 0.1uF K	R20	119-0000-05	1/10W 0 ohm JW
C18	168-1042-78	16V 0.1uF K	C80	168-1042-78	16V 0.1uF K	R21	119-1011-15	1/10W 100 ohm
C19	046-1042-78	16V 0.1uF	C81	046-1042-78	16V 0.1uF	R22	033-0000-05	1/16W 0 ohm
C20	046-1532-78	0.015uF K B	C83	042-1710-90	6.3V 100uF	R23	119-0000-05	1/10W 0 ohm JW
C21	046-1042-78	16V 0.1uF	CCT1	050-0140-57	1/32W 10k ohm x4J	R24	119-0000-05	1/10W 0 ohm JW
C22	168-1042-78	16V 0.1uF K	D1	001-9210-50	AVR-M1608C270MT AAD	R25	033-0000-05	1/16W 0 ohm
C23	046-1522-58	1500pF K B	IC1	051-6752-00	TC94A92FG-301	R27	033-0000-05	1/16W 0 ohm
C24	046-1042-78	16V 0.1uF	IC2	051-6101-90	BD8226EFV	R28	033-0000-05	1/16W 0 ohm
C25	046-2222-58	2200pF K B	IC3	051-3579-90	S1112B15MCL6ATF G	R29	033-0000-05	1/16W 0 ohm
C27	168-1042-78	16V 0.1uF K	IC4	051-3516-90	S-1132B33-U5T1G	R30	033-0000-05	1/16W 0 ohm
C29	046-1032-78	16V 0.01uF	J1	074-1138-65	15P	R31	033-0000-05	1/16W 0 ohm
C30	046-4712-58	470pF K B	J2	074-1138-60	10P	R32	033-0000-05	1/16W 0 ohm
C31	046-4712-58	470pF K B	J3	074-1237-77	27P	R33	033-0000-05	1/16W 0 ohm
C32	046-3332-78	0.033uF K B	Q1	190-2060-00	2SA2060	R34	033-0000-05	1/16W 0 ohm
C33	168-1532-55	0.015uF K	R1	033-2211-15	1/16W 220 ohm J	R35	033-0000-05	1/16W 0 ohm
C34	168-1042-78	16V 0.1uF K	R2	117-6811-15	1/10W 680 ohm	R36	033-0000-05	1/16W 0 ohm
C36	046-6822-58	6800pF K B	R3	117-1001-15	1/8W 10 ohm	R37	033-0000-05	1/16W 0 ohm
C37	045-4701-50	47pF CH	R4	033-1831-15	1/16W 18k ohm J	R38	033-0000-05	1/16W 0 ohm
C39	046-1042-78	16V 0.1uF	R5	033-1231-15	1/16W 12k ohm J	R39	033-0000-05	1/16W 0 ohm
C40	168-1042-78	16V 0.1uF K	R6	033-1541-15	1/16W 150k ohm J	R40	033-1041-15	1/16W 100k ohm J
C41	046-5622-58	5600pF K B	R7	033-1031-15	1/16W 10k ohm J	R45	033-1021-15	1/16W 1k ohm J
C42	168-1042-78	16V 0.1uF K	R8	033-0000-05	1/16W 0 ohm	R68	033-1021-15	1/16W 1k ohm J
C43	046-4732-78	16V 0.047uF	R9	033-2211-15	1/16W 220 ohm J	R91	119-0000-05	1/10W 0 ohm JW
C44	046-4732-78	16V 0.047uF	R10	033-0000-05	1/16W 0 ohm	R94	119-0000-05	1/10W 0 ohm JW
C45	168-1042-78	16V 0.1uF K	R11	033-1531-15	1/16W 15k ohm J	TM1	073-0768-90	TERMINAL
C46	043-0570-90	16V 2.2uF K	R12	033-4731-15	1/16W 47k ohm J	X1	061-3572-90	16.92MHz
C49	168-1042-78	16V 0.1uF K				PWB	039-3700-00	PWB(WITHOUT COMPONENTS)
C50	045-1201-50	12pF J CH						

SENSOR PWB section

REF No.	PART No.	DESCRIPTION
D1	001-7058-90	AN1105W-RR
D2	001-7058-90	AN1105W-RR
J1	074-1138-60	10P
Q1	060-4015-91	PS1192HB
Q2	060-4015-91	PS1192HB
S1	013-7414-50	CHUCKING
S2	013-7413-50	LIMIT
PWB	039-2675-20	PWB(WITHOUT COMPONENTS)