

(1) PACKING SECTION PARTS LIST

<u>Mark No.</u>	<u>Description</u>	<u>Part No.</u>	<u>Mark No.</u>	<u>Description</u>	<u>Part No.</u>
1	Cord Assy	CDP1484	11	Screw	TRZ50P080FTC
2	Polyethylene Bag	CEG1173	12	Unit Box	See Contrast table (2)
3	Protector	See Contrast table (2)	13	Contain Box	See Contrast table (2)
4	Card Remote Control Unit	See Contrast table (2)	14	Microphone Assy	See Contrast table (2)
5	USB Cable	YDP5047			
			*	15-1 Warranty Card	QRY3001
6	Screw	BPZ20P060FTC		15-2 Owner's Manual	YRD5364
7	Cord Clamper Assy	See Contrast table (2)		15-3 Caution Card	YRP5030
8	Polyethylene Bag	CEG1160	16	Protector	See Contrast table (2)
9	Screw	CRZ50P090FTC	17	Cover	YEG5008
10	Handle	QNC3021			

(2) CONTRAST TABLE

DEH-P8400BH/XSUC and DEH-P7400HD/XSUC are constructed the same except for the following:

Mark	No.	Description	DEH-P8400BH/XSUC	DEH-P7400HD/XSUC
	3	Protector	YHP5085	QHP3016
	7	Cord Clamper Assy	CEA4636	Not used
	12	Unit Box	YHG5679	YHG5654
	13	Contain Box	YHL5679	YHL5654
	14	Microphone Assy	YPM5003	Not used
	16	Protector	YHP5086	QHP3016

Owner's Manual, Installation Manual

Part No.	Language
YRD5364	English, French, Spanish(Espanol)

9.2 EXTERIOR

1

2

3

4

A

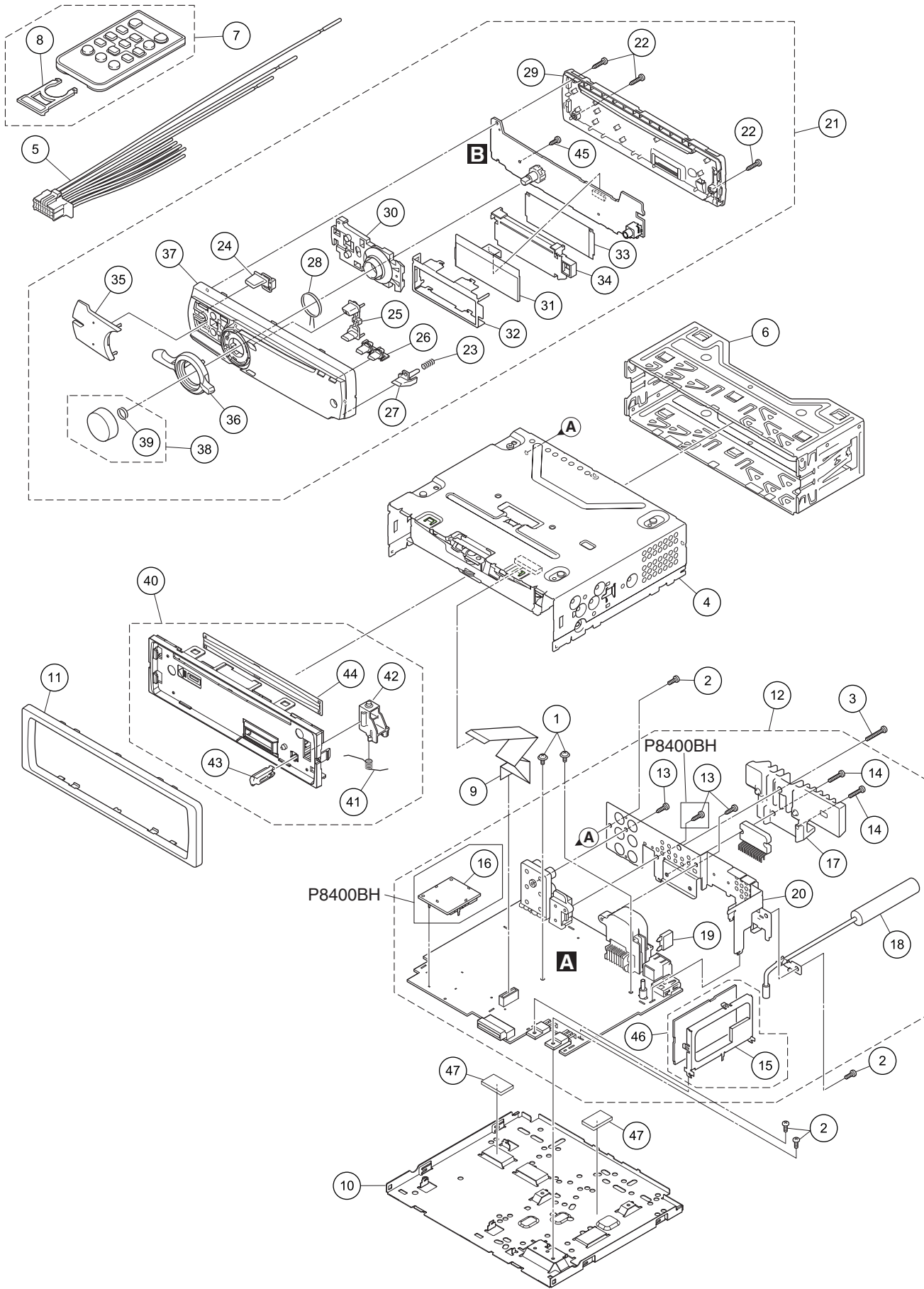
B

C

D

E

F



1

2

3

4

(1) EXTERIOR SECTION PARTS LIST

<u>Mark No.</u>	<u>Description</u>	<u>Part No.</u>	<u>Mark No.</u>	<u>Description</u>	<u>Part No.</u>
1	Screw	ASZ26P050FTC	26	Button (EJECT, PHONE)(P8400BH)YAC5451	
2	Screw	BSZ26P060FTC		Button (EJECT, CLOCK)(P7400HD)	
3	Screw	BSZ26P120FTC	27	Button (DETACH)	YAC5452
4	CD Mechanism Module (S11.6)	CXK5804	28	Coil Spring	YBH5018
5	Cord Assy	CDP1484	29	Cover	YNS5666
6	Holder	QNC3020	30	Lighting Conductor	YNV5227
7	Card Remote Control Unit	See Contrast table (2)	31	STN LCD	YAW5112
8	Cover	CNS7068	32	Holder	YNC5101
9	FFC	YDE5096	33	Sheet	YNM5187
10	Case	YNB5080	34	Plate Unit	YXA5835
11	Panel	YNS5668	35	Button Unit (SRC, BAND)	YXA5812
12	Tuner Amp Unit	See Contrast table (2)	36	Lever Unit	YXA5815
13	Screw	See Contrast table (2)	37	Grille Unit	See Contrast table (2)
14	Screw	BSZ26P120FTC	38	Knob Unit	YXC5158
15	Holder	CND5830	39	Spring	YBL5010
16	BT Module	See Contrast table (2)	40	Panel Unit	YXA5857
17	Heat Sink	QNR3002	41	Spring	QBH3001
18	Antenna Attached Cable	YDH5001	* 42	Arm	QNV3025
⚠ 19	Fuse (10 A)	YEK5001	* 43	Button	QNV3026
20	Holder	See Contrast table (2)	* 44	Cover	CNN1665
21	Detachable Grille Assy	See Contrast table (2)	45	Screw	BPZ20P060FTC
22	Screw	BPZ20P100FTC	46	WWR Core Tuner Unit	CWE2328
23	Spring	CBH2210	47	Sheet	YNM5198
24	Button (MIX)	YAC5449			
25	Button (UP, DOWN)	YAC5450			

(2) CONTRAST TABLE

DEH-P8400BH/XSUC and DEH-P7400HD/XSUC are constructed the same except for the following:

Mark	No.	Description	DEH-P8400BH/XSUC	DEH-P7400HD/XSUC
	7	Card Remote Control Unit	QXE1044	QXE1047
	12	Tuner Amp Unit	YWM5560	YWM5558
	13	Screw	BPZ26P080FTC (x3)	BPZ26P080FTC (x2)
	16	BT Module	CWX4188	Not used
	20	Holder	YNC5103	YNC5102
	21	Detachable Grille Assy	YXA5821	YXA5820
	37	Grille Unit	YXA5840	YXA5811

9.3 CD MECHANISM MODULE

A

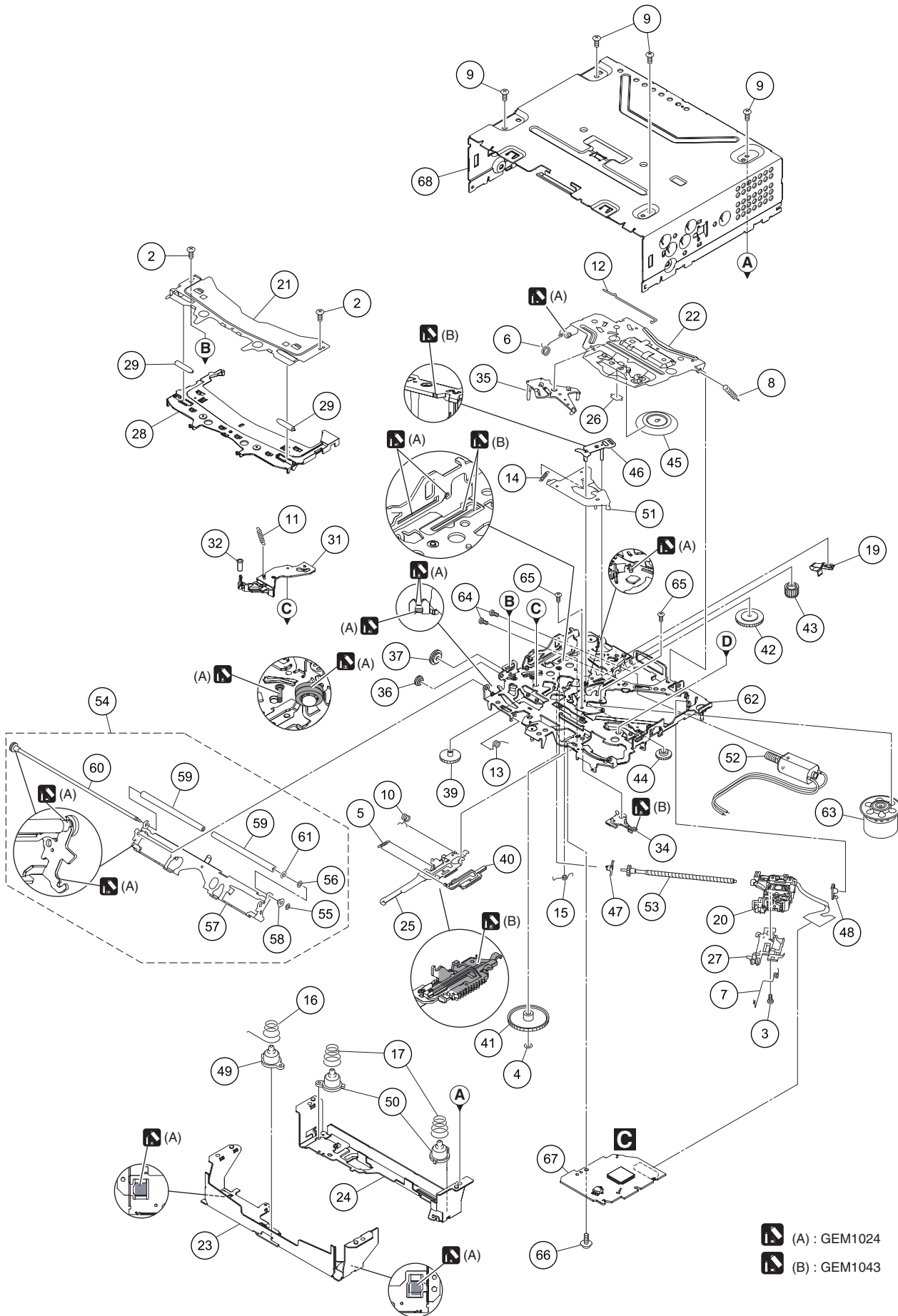
B

C

D

E

F



(A) : GEM1024
 (B) : GEM1043

CD MECHANISM MODULE SECTION PARTS LIST

<u>Mark No.</u>	<u>Description</u>	<u>Part No.</u>	<u>Mark No.</u>	<u>Description</u>	<u>Part No.</u>
1		50	Damper	CNW1198
2	Screw	BSZ20P040FTC	51	Arm	CNW1726
3	Screw(M2 x 4)	CBA1835	52	Motor Unit(M2)(LOAD/CRG)	CXC4026
4	Washer	CBF1038	53	Screw Unit	CXC8894
5	Spring	CBH3010	54	Arm Assy	CXE4840
6	Spring	CBH2855	55	Washer	CBF1037
7	Spring	CBH2856	56	Washer	CBF1038
8	Spring	CBH2860	57	Arm	CND6242
9	Screw	BSZ26P060FTC	58	Collar	CNV6906
10	Spring	CBH3011	59	Roller	CNW1196
11	Coil Spring	CBH3095	60	Gear Unit	CXC8893
12	Spring	CBH3014	61	Washer	YE15FTC
13	Spring	CBH3015	62	Chassis Unit	CXE4528
14	Spring	CBH3016	63	Motor Unit(M1)(SPDL)	CXE2273
15	Spring	CBH3017	64	Screw	JFZ20P025FTC
16	Spring	CBH3086	65	Screw	JGZ17P022FTC
17	Spring	CBH3019	66	Screw	EBA1028
18		67	CD Core Unit (S11.6STD)	CWX4023
19	Leaf Spring	CBL1824	68	Chassis	CNA3181
20	Pickup Unit(P10.6)(Service)	CXX3556			
21	Bracket	CND4553			
22	Arm	CND6406			
23	Bracket	CND6127			
24	Bracket	CND5710			
25	Lever	CND5398			
26	Sheet	CNN3678			
27	Rack	CNV8342			
28	Guide	CNW2240			
29	Roller	CNW1172			
30				
31	Arm	CNW2241			
32	Roller	CNW1175			
33				
34	Arm	CNW1177			
35	Arm	CNW1178			
36	Gear	CNW1180			
37	Gear	CNW1181			
38				
39	Gear	CNW1183			
40	Rack	CNW1184			
41	Gear	CNW1185			
42	Gear	CNW1186			
43	Gear	CNW1187			
44	Gear	CNW2287			
45	Clamper	CNW1190			
46	Arm	CNW1192			
47	Holder	CNW1193			
48	Holder	CNW1194			
49	Damper	CNW1197			

5		6		7		8	
<u>Circuit Symbol and No.</u>		<u>Part No.</u>		<u>Circuit Symbol and No.</u>		<u>Part No.</u>	
D 274	(B,143,57) Diode	CRG03		VA805	(B,115,22) Varistor	EZJZ1V270RM	
D 281	(B,134,48) Diode	CRG03		VA806	(B,120,22) Varistor	EZJZ1V270RM	
D 282	(B,134,51) Diode	CRG03		VA807	(B,121,22) Varistor	EZJZ1V270RM	
D 283	(A,133,64) Diode	RB160L-40		VA808	(A,125,21) Varistor	EZJZ1V270RM	A
D 381	(A,53,128) Diode	RKZ8.2KG(B2)		VA809	(B,108,22) Diode	DZ2S068C	
D 382	(A,58,126) Diode	1SS301		VA810	(B,105,22) Diode	DZ2S068C	
D 383	(A,51,128) Diode	1SS352		VA811	(B,107,22) Diode	DZ2S068C	
D 581	(A,99,46) Diode	1SS352		VA921	(B,161,136) Varistor	EZJZ1V800AM	
D 582	(A,101,46) Diode	CRG03		VA922	(B,166,136) Varistor	EZJZ1V800AM	
D 601	(A,104,64) Diode	RB551V-30		VA1001	(A,45,48) Diode(A)	DZ2S068C	
D 602	(A,107,90) Diode	RB751S-40		VA1002	(A,50,45) Diode(A)	DZ2S068C	
D 651	(A,101,87) Diode	1SS352		VA1003	(A,50,47) Diode(A)	DZ2S068C	
D 751	(A,139,46) Diode	RKZ8.2KG(B2)		U 251	(A,163,77) WWR C-TUN Unit	CWE2328	
D 851	(A,8,115) Diode	RB551V-30		CN701	(A,94,38) Connector	VKN1192	B
D 861	(B,112,34) Diode	CRG03		CN802	(A,111,4) Connector	CKS6288	
D 862	(B,112,37) Diode	CRG03		CN1001	(A,48,34) Connector(A)	CKS6346	
D 863	(A,119,47) Diode	RB160L-40		JA101	(A,144,144) Connector	CKS5271	
D 901	(B,145,42) Diode	CRG03		JA141	(A,45,141) Jack(A)	YKS5035	
D 902	(A,156,48) Diode	RKZ5.6KG(B2)		JA142	(A,45,139) Connector(B)	CKS4124	
D 921	(A,126,127) Diode	HZU7L(C3)		JA301	(A,21,141) Pin Jack	YKB5016	
D 922	(A,113,129) Diode	HZU7L(A1)		JA981	(A,116,141) Plug	CKM1586	
D 931	(A,87,119) Diode	CRG03		JA1041	(A,163,135) Jack	CKN1091	
D 941	(A,99,129) Diode	CRG03			Fuse (10 A)	YEK5001	
D 942	(A,103,129) Diode	CRG03		RESISTORS			
D 981	(A,126,122) Diode	1SR154-400		R 101	(A,147,132)	RS1/16SS101J	C
D 982	(A,129,122) Diode	1SR154-400		R 102	(A,147,133)	RS1/16SS150J	
D 1021	(B,32,109) Diode	CRG03		R 103	(A,148,134)	RS1/16SS470J	
D 1022	(B,32,106) Diode	CRG03		R 104	(A,149,134)	RS1/16SS101J	
D 1023	(A,29,95) Diode	DB2X41400		R 105	(A,142,134)	RS1/16SS181J	
D 1061	(B,119,110) Diode	RKZ5.1KG(B2)		R 106	(A,147,134)	RS1/16SS181J	
L 151	(B,35,118) Inductor	LCTAW6R8J2520		R 107	(A,145,134)	RS1/16SS102J	
L 181	(A,67,82) Chip Ferrite Bead	DTL1107		R 108	(A,144,134)	RS1/16SS102J	
L 251	(A,147,79) Chip Coil	LCTAW1R0J2520		R 109	(A,143,134)	RS1/16SS223J	
L 281	(A,139,65) Coil	CTH1475		R 110	(A,146,134)	RS1/16SS223J	D
L 501	(A,78,46) Chip Ferrite Bead	DTL1107		R 111	(A,140,135)	RS1/16SS222J	
L 602	(A,94,76) Inductor	CTF1786		R 112	(A,144,130)	RS1/16SS101J	
L 851	(A,9,109) Inductor	CTF1660		R 113	(A,151,132)	RS1/16SS102J	
L 861	(A,115,40) Coil	CTH1475		R 114	(A,138,135)	RS1/16SS332J	
L 911	(B,50,113) Inductor	LCTAW6R8J2520		R 115	(A,137,133)	RS1/16SS562J	
L 921	(A,127,104) Inductor	CTF1713		R 121	(A,129,88)	RS1/16SS473J	
L 981	(A,114,141) Choke Coil 600 uH	CTH1432		R 122	(A,130,88)	RS1/16SS104J	
L 1003	(A,45,46) Inductor(A)	CTF1389		R 123	(A,126,83)	RS1/16SS474J	
L 1004	(A,13,35) Inductor(A)	CTF1389		R 124	(A,119,90)	RS1/16SS473J	
L 1005	(A,13,33) Inductor(A)	CTF1786		R 125	(A,118,90)	RS1/16SS104J	
L 1021	(A,9,95) Choke Coil 33 uH	CTH1417		R 126	(A,123,85)	RS1/16SS474J	E
L 1022	(A,26,102) Inductor	CTF1793		R 141	(B,46,128)	RS1/10SR102J	
X 501	(A,56,48) Oscillator 48.000 MHz	CSS1760		R 142	(B,41,130)	RS1/10SR102J	
X 502	(A,74,72) Oscillator 16.93 MHz	CSS1794		R 143	(A,39,133) (A)	RS1/16SS0R0J	
X 601	(A,96,79) Oscillator 20.000 MHz	CSS1795		R 151	(B,20,116)	RS1/10SR101J	
P 301	(A,29,119) Poly Switch	MINISMDC075F/24-2		R 152	(A,30,107)	RS1/10SR0R0J	
P 401	(B,155,113) Surge Protector	IMSA-6802-01Y900		R 162	(A,83,86)	RS1/10SR0R0J	
BZ601	(A,10,43) Buzzer	CPV1062		R 163	(A,84,86)	RS1/10SR0R0J	
VA141	(A,38,133) Varistor	VR105C5R0AAA		R 191	(A,83,95)	RS1/16SS821J	
VA142	(A,40,132) Varistor	VR105C5R0AAA		R 192	(A,83,98)	RS1/16SS821J	
VA143	(A,39,131) Varistor(A)	VR105C5R0AAA		R 201	(A,66,125)	RAB4CQ102J	
VA144	(A,37,131) Varistor(A)	VR105C5R0AAA		R 202	(A,76,96)	RS1/16SS223J	F
VA801	(B,104,22) Varistor	EZJZ1V270RM		R 203	(A,78,96)	RS1/16SS223J	
VA802	(B,112,22) Varistor	EZJZ1V270RM		R 204	(A,77,96)	RS1/16SS331J	
VA803	(B,118,22) Varistor	EZJZ1V270RM					
VA804	(B,116,22) Varistor	EZJZ1V270RM					

1

2

3

4

Circuit Symbol and No.**Part No.****Circuit Symbol and No.****Part No.**

R 251	(A,146,76)	RS1/16SS821J	R 513	(B,55,59)	RS1/10SR103J
R 252	(A,146,73)	RS1/16SS821J	R 516	(A,63,49)	RS1/16SS5601F
A R 253	(A,146,74)	RS1/16SS103J	R 517	(A,65,51)	RS1/16SS473J
R 254	(A,146,75)	RS1/16SS103J	R 519	(A,66,51) (B)	RS1/16SS473J
R 255	(B,121,69)	RS1/10SR473J	R 521	(A,74,60)	RS1/16SS473J
R 257	(A,145,71)	RS1/10SR680J	R 522	(A,75,63)	RS1/16SS473J
R 258	(A,145,65)	RS1/10SR680J	R 525	(A,75,79)	RS1/16SS221J
			R 527	(A,72,73)	RS1/16SS332J
R 259	(A,145,68)	RS1/10SR680J			
R 261	(B,137,95)	RS1/4SA0R0J	R 530	(A,66,82)	RS1/16SS221J
R 281	(A,127,57)	RS1/16SS513J	R 531	(A,65,82)	RS1/16SS101J
R 283	(A,127,68)	RS1/16SS183J	R 532	(A,64,82)	RS1/16SS101J
R 285	(A,124,66)	RS1/16SS1002D	R 533	(A,63,82)	RS1/16SS221J
			R 534	(A,40,77)	RS1/16SS472J
R 286	(A,123,64)	RS1/16SS4702F			
B R 287	(A,123,63)	RS1/16SS103J	R 536	(A,41,77)	RS1/16SS0R0J
R 288	(A,139,70)	RS1/10SR471J	R 537	(B,54,34)	RS1/10SR221J
R 301	(A,6,130)	RS1/16SS820J	R 538	(B,51,37)	RS1/10SR221J
R 302	(A,13,129)	RS1/16SS820J	R 539	(B,54,30)	RS1/10SR221J
			R 540	(A,66,49) (A)	RS1/16SS473J
R 303	(A,15,129)	RS1/16SS820J			
R 304	(A,33,131)	RS1/16SS820J	R 541	(A,83,41)	RS1/16SS0R0J
R 305	(A,23,129)	RS1/16SS820J	R 542	(B,87,91)	RS1/4SA0R0J
R 306	(A,29,128)	RS1/16SS820J	R 560	(A,41,73)	RS1/16SS473J
R 307	(A,6,131)	RS1/16SS223J	R 572	(B,41,77)	RS1/10SR472J
			R 574	(B,37,77)	RS1/10SR472J
R 308	(A,13,130)	RS1/16SS223J			
R 309	(A,15,130)	RS1/16SS223J	R 575	(A,29,86)	RAB4CQ221J
C R 310	(A,31,129)	RS1/16SS223J	R 576	(A,31,86)	RAB4CQ221J
R 311	(A,23,130)	RS1/16SS223J	R 577	(A,34,86)	RAB4CQ221J
R 312	(A,29,129)	RS1/16SS223J	R 578	(A,37,86)	RAB4CQ221J
			R 591	(A,74,63)	RS1/16SS472J
R 361	(A,58,134)	RS1/16SS103J			
R 362	(A,56,133)	RS1/16SS103J	R 592	(A,85,70)	RS1/16SS101J
R 363	(A,57,133)	RS1/16SS331J	R 593	(A,86,57)	RS1/16SS103J
R 365	(A,65,134)	RS1/16SS103J	R 594	(A,85,62)	RS1/16SS101J
R 366	(A,66,134)	RS1/16SS103J	R 595	(A,86,59)	RS1/16SS103J
			R 596	(A,77,60)	RS1/16SS473J
R 367	(A,66,130)	RS1/10SR562J			
R 371	(A,71,129)	RS1/16SS362J	R 599	(A,78,57)	RS1/16SS272J
R 372	(A,70,129)	RS1/16SS362J	R 600	(A,77,58)	RS1/16SS472J
D R 375	(A,76,129)	RS1/16SS362J	R 601	(A,98,85)	RS1/16SS102J
R 376	(A,76,128)	RS1/16SS362J	R 602	(A,94,84)	RS1/10SR154J
			R 603	(A,98,78)	RS1/16SS105J
R 377	(A,79,128)	RS1/16SS562J			
R 378	(A,78,129)	RS1/16SS562J	R 604	(A,99,82)	RS1/16SS104J
R 379	(A,72,131)	RS1/16SS562J	R 605	(A,99,80)	RS1/16SS101J
R 380	(A,72,133)	RS1/16SS562J	R 606	(A,94,74)	RS1/16SS104J
R 381	(A,55,130)	RS1/10SR473J	R 607	(A,100,71)	RS1/16SS222J
			R 608	(B,96,59)	RS1/10SR104J
R 382	(A,56,130)	RS1/10SR104J			
R 383	(A,118,69)	RS1/16SS473J	R 609	(B,98,77)	RS1/10SR104J
R 384	(A,55,127)	RS1/10SR473J	R 610	(A,95,73)	RS1/16SS104J
R 385	(A,50,132)	RS1/16SS102J	R 611	(A,96,74)	RS1/16SS104J
E R 463	(A,84,67)	RS1/10SR0R0J	R 612	(A,94,72)	RS1/16SS104J
			R 613	(A,106,65)	RS1/16SS104J
R 464	(A,77,75)	RS1/16SS101J			
R 465	(A,78,78)	RS1/16SS101J	R 614	(A,107,65)	RS1/16SS104J
R 466	(A,82,73)	RS1/16SS101J	R 615	(A,103,64)	RS1/16SS104J
R 467	(A,78,75)	RS1/10SR101J	R 616	(A,102,69)	RS1/16SS472J
R 468	(A,80,76)	RS1/10SR473J	R 617	(A,102,68)	RS1/16SS472J
			R 618	(A,109,65)	RS1/16SS472J
R 501	(A,42,53)	RS1/16SS473J			
R 502	(A,39,52)	RS1/16SS101J	R 619	(A,110,65)	RS1/16SS104J
R 503	(B,44,52)	RS1/10SR473J	R 620	(A,112,65)	RS1/16SS104J
R 504	(B,44,54)	RS1/10SR473J	R 621	(A,113,65)	RS1/16SS104J
F R 505	(B,52,53)	RS1/10SR473J	R 623	(A,114,65)	RS1/16SS104J
			R 624	(A,115,65)	RS1/16SS104J
R 506	(B,52,52)	RS1/10SR473J			
R 510	(A,56,51)	RS1/16SS102J	R 626	(A,122,74)	RS1/16SS104J
R 512	(B,55,57)	RS1/10SR101J	R 627	(A,121,80)	RS1/16SS104J

1

2

3

4

5		6		7		8	
<u>Circuit Symbol and No.</u>		<u>Part No.</u>		<u>Circuit Symbol and No.</u>		<u>Part No.</u>	
R 629	(A,110,87) (A)	RS1/16SS104J	RS1/16SS104J	R 911	(A,44,109)	RS1/16SS102J	RS1/16SS102J
R 630	(A,107,89)	RS1/16SS103J	RS1/16SS103J	R 921	(A,121,129)	RS1/16SS104J	RS1/16SS104J
R 643	(A,119,71)	RS1/16SS104J	RS1/16SS104J	R 922	(A,110,129)	RS1/16SS103J	RS1/16SS103J
R 651	(A,102,88)	RS1/16SS104J	RS1/16SS104J	R 923	(A,124,128)	RS1/16SS473J	RS1/16SS473J
R 652	(A,100,88)	RS1/16SS152J	RS1/16SS152J	R 924	(A,110,127)	RS1/16SS473J	RS1/16SS473J
R 701	(A,97,43)	RS1/16SS472J	RS1/16SS472J	R 925	(A,112,127)	RS1/16SS472J	RS1/16SS472J
R 702	(A,91,40)	RS1/16SS473J	RS1/16SS473J	R 926	(A,117,129)	RS1/4SA102J	RS1/4SA102J
R 703	(A,97,41)	RS1/16SS472J	RS1/16SS472J	R 931	(A,91,116)	RS1/16SS103J	RS1/16SS103J
R 704	(A,97,39)	RS1/16SS472J	RS1/16SS472J	R 932	(A,87,124)	RS1/4SA102J	RS1/4SA102J
R 705	(A,90,42)	RS1/10SR221J	RS1/10SR221J	R 1001	(A,51,39) (A)	RS1/16SS102J	RS1/16SS102J
R 706	(A,87,39)	RS1/16SS221J	RS1/16SS221J	R 1002	(A,52,39) (A)	RS1/16SS102J	RS1/16SS102J
R 707	(A,91,38)	RS1/16SS101J	RS1/16SS101J	R 1004	(A,46,46) (A)	RS1/10SR0R0J	RS1/10SR0R0J
R 708	(A,91,37)	RS1/16SS221J	RS1/16SS221J	R 1005	(A,48,46) (A)	RS1/16SS0R0J	RS1/16SS0R0J
R 709	(A,91,36)	RS1/16SS101J	RS1/16SS101J	R 1006	(A,51,44) (A)	RS1/16SS0R0J	RS1/16SS0R0J
R 710	(A,88,36)	RS1/16SS102J	RS1/16SS102J	R 1007	(A,15,33) (A)	RS1/10SR0R0J	RS1/10SR0R0J
R 711	(A,91,34)	RS1/16SS151J	RS1/16SS151J	R 1008	(A,15,37) (A)	RS1/16SS102J	RS1/16SS102J
R 712	(A,91,33)	RS1/16SS151J	RS1/16SS151J	R 1021	(A,20,102)	RS1/16SS3902D	RS1/16SS3902D
R 713	(A,91,32)	RS1/16SS151J	RS1/16SS151J	R 1022	(A,19,101)	RS1/16SS1201D	RS1/16SS1201D
R 714	(A,91,31)	RS1/16SS221J	RS1/16SS221J	R 1023	(A,17,102)	RS1/16SS1002D	RS1/16SS1002D
R 715	(A,87,38)	RS1/16SS104J	RS1/16SS104J	R 1024	(A,25,92)	RS1/16SS104J	RS1/16SS104J
R 716	(A,85,32)	RS1/16SS104J	RS1/16SS104J	R 1026	(A,21,91)	RS1/16SS103J	RS1/16SS103J
R 717	(A,91,35)	RS1/16SS104J	RS1/16SS104J	R 1028	(A,19,91)	RS1/16SS393J	RS1/16SS393J
R 751	(B,132,45)	RS1/10SR821J	RS1/10SR821J	R 1031	(A,14,100)	RS1/16SS102J	RS1/16SS102J
R 753	(A,126,41)	RS1/16SS473J	RS1/16SS473J	R 1032	(A,16,100)	RS1/16SS102J	RS1/16SS102J
R 754	(A,127,41)	RS1/16SS103J	RS1/16SS103J	R 1033	(A,114,106)	RS1/16SS5R6J	RS1/16SS5R6J
R 792	(A,56,39)	RAB4CQ473J	RAB4CQ473J	R 1034	(A,113,104)	RS1/16SS5R6J	RS1/16SS5R6J
R 793	(A,64,40)	RAB4CQ473J	RAB4CQ473J	R 1037	(B,39,98)	RS1/10SR103J	RS1/10SR103J
R 795	(A,53,39)	RS1/16SS0R0J	RS1/16SS0R0J	R 1038	(B,21,100)	RS1/10SR471J	RS1/10SR471J
R 801	(A,105,21)	RS1/10SR222J	RS1/10SR222J	R 1039	(B,19,100)	RS1/10SR471J	RS1/10SR471J
R 802	(A,120,21)	RS1/10SR222J	RS1/10SR222J	R 1072	(B,121,108)	RS1/10SR102J	RS1/10SR102J
R 803	(A,118,21)	RS1/10SR222J	RS1/10SR222J	<u>CAPACITORS</u>			
R 804	(A,111,21)	RS1/10SR222J	RS1/10SR222J	C 101	(A,153,135)	CKSRYB104K16	CKSRYB104K16
R 805	(A,123,27)	RS1/10SR102J	RS1/10SR102J	C 106	(A,144,127)	CKSSYB104K10	CKSSYB104K10
R 806	(A,106,24)	RS1/10SR104J	RS1/10SR104J	C 121	(A,129,86)	CKSSYB104K10	CKSSYB104K10
R 807	(B,108,54)	RS1/10SR104J	RS1/10SR104J	C 122	(A,130,86)	CKSSYB104K10	CKSSYB104K10
R 808	(B,124,44)	RS1/10SR104J	RS1/10SR104J	C 123	(A,127,83)	CKSSYB474K6R3	CKSSYB474K6R3
R 809	(A,117,21)	RS1/10SR222J	RS1/10SR222J	C 124	(A,125,83)	CCSSCH101J50	CCSSCH101J50
R 810	(A,116,21)	RS1/10SR222J	RS1/10SR222J	C 125	(A,119,89)	CKSSYB104K10	CKSSYB104K10
R 811	(A,114,21)	RS1/10SR222J	RS1/10SR222J	C 126	(A,118,89)	CKSSYB104K10	CKSSYB104K10
R 812	(A,109,21)	RS1/10SR101J	RS1/10SR101J	C 127	(A,119,87)	CKSSYB474K6R3	CKSSYB474K6R3
R 813	(A,107,21)	RS1/10SR101J	RS1/10SR101J	C 128	(A,122,85)	CCSSCH101J50	CCSSCH101J50
R 821	(A,99,20)	RS1/10SR1R0J	RS1/10SR1R0J	C 129	(A,123,88)	CKSSYB103K16	CKSSYB103K16
R 822	(A,111,30)	RS1/4SA222J	RS1/4SA222J	C 151	(A,28,112) Capacitor	CEVW470M16	CEVW470M16
R 823	(A,111,27)	RS1/10SR103J	RS1/10SR103J	C 152	(B,21,111)	CKSRYB104K16	CKSRYB104K16
R 824	(A,115,26)	RS1/10SR472J	RS1/10SR472J	C 153	(B,27,115)	CKSRYB104K16	CKSRYB104K16
R 842	(A,101,22)	RS1/16SS472J	RS1/16SS472J	C 161	(A,87,70)	CKSSYB104K16	CKSSYB104K16
R 843	(A,103,25)	RS1/16SS102J	RS1/16SS102J	C 162	(A,89,70)	CKSSYB104K16	CKSSYB104K16
R 844	(A,101,25)	RS1/16SS103J	RS1/16SS103J	C 163	(A,89,71) 10 uF	CCG1192	CCG1192
R 851	(A,22,121)	RS1/10SR821J	RS1/10SR821J	C 181	(A,71,88) 10 uF	CCG1192	CCG1192
R 852	(A,18,115)	RS1/10SR153J	RS1/10SR153J	C 182	(A,67,84)	CKSSYB103K16	CKSSYB103K16
R 853	(A,19,115)	RS1/10SR222J	RS1/10SR222J	C 183	(A,69,84) 10 uF	CCG1192	CCG1192
R 854	(A,21,115)	RS1/10SR332J	RS1/10SR332J	C 185	(A,87,73) 10 uF	CCG1192	CCG1192
R 861	(A,106,48)	RS1/16SS513J	RS1/16SS513J	C 186	(A,80,86)	CCSRCH220J50	CCSRCH220J50
R 863	(A,117,48)	RS1/16SS183J	RS1/16SS183J	C 187	(A,78,88)	CCSRCH220J50	CCSRCH220J50
R 865	(A,114,52)	RS1/16SS1002D	RS1/16SS1002D	C 188	(A,74,88)	CCSRCH220J50	CCSRCH220J50
R 866	(A,109,51)	RS1/16SS4702F	RS1/16SS4702F	C 190	(A,81,86)	CKSSYB102K50	CKSSYB102K50
R 867	(A,111,51)	RS1/16SS103J	RS1/16SS103J	C 191	(A,81,97)	CCSRCH182J50	CCSRCH182J50
R 868	(A,104,44)	RS1/10SR471J	RS1/10SR471J	C 192	(A,81,99)	CCSRCH182J50	CCSRCH182J50
R 901	(A,152,45)	RS1/16SS332J	RS1/16SS332J				
R 902	(A,152,46)	RS1/16SS223J	RS1/16SS223J				

	1		2		3		4	
	<u>Circuit Symbol and No.</u>		<u>Part No.</u>		<u>Circuit Symbol and No.</u>		<u>Part No.</u>	
	C 201	(A,66,116)	CKSRYB105K10		C 368	(B,72,143)	CCSRCH100D50	
	C 202	(A,79,117)	CKSRYB105K10		C 381	(A,47,129) Capacitor	CEVW220M16	
	C 203	(A,66,118)	CKSRYB105K10		C 461	(A,77,67)	CKSRYB104K16	
A	C 204	(A,79,118)	CKSRYB105K10		C 475	(A,158,84)	CKSSYB102K50	
	C 207	(A,82,116)	CKSRYB105K10		C 501	(A,77,48) 10 uF	CCG1192	
	C 208	(A,79,114)	CKSRYB105K10		C 503	(A,77,45) 10 uF	CCG1192	
	C 209	(A,82,114)	CKSRYB105K10		C 506	(A,81,43) 10 uF	CCG1192	
	C 210	(A,79,115)	CKSRYB105K10		C 507	(A,43,73)	CKSSYB104K10	
	C 211	(A,75,99)	CKSRYB105K10		C 508	(A,42,73)	CKSSYB104K10	
	C 212	(A,78,99)	CKSRYB105K10		C 509	(A,41,67)	CKSSYB104K10	
	C 213	(A,77,99)	CKSQYB225K10		C 510	(A,42,66)	CKSSYB104K10	
	C 215	(A,66,120)	CKSRYB105K10		C 511	(A,42,62)	CKSSYB104K10	
	C 216	(A,79,119)	CKSRYB105K10		C 512	(A,42,60)	CKSRYB104K16	
B	C 220	(B,78,122) 10 uF	CCG1192		C 513	(A,43,57)	CKSSYB104K10	
	C 221	(A,81,122) 10 uF	CCG1192		C 514	(A,42,55)	CKSSYB104K10	
	C 222	(A,79,123)	CKSSYB104K10		C 515	(A,39,55)	CKSSYB103K16	
	C 223	(B,78,119) 10 uF	CCG1192		C 516	(A,45,53)	CKSSYB104K10	
	C 224	(A,80,127)	CKSSYB104K10		C 517	(A,50,50)	CKSSYB104K10	
	C 225	(A,80,125) 10 uF	CCG1192		C 518	(A,52,50)	CKSSYB102K50	
	C 251	(B,156,107)	CCSRCK2R0C50		C 519	(A,54,51)	CKSSYB104K10	
	C 252	(A,153,76)	CEVW101M16		C 520	(A,55,51)	CKSSYB104K10	
	C 253	(B,163,102)	CKSRYB104K16		C 521	(A,59,51)	CKSSYB104K10	
	C 255	(B,157,70) 10 uF	CCG1192		C 522	(A,55,46)	CCSSCH100D50	
	C 257	(B,158,60) 10 uF	CCG1192		C 523	(A,57,46)	CCSSCH100D50	
C	C 260	(B,166,84)	CKSRYB102K50		C 524	(A,63,48)	CKSSYB104K10	
	C 261	(B,164,87)	CKSRYB104K16		C 525	(A,60,51)	CKSSYB105K6R3	
	C 271	(B,146,76) 10 uF	CCG1192		C 526	(A,62,51)	CKSSYB104K10	
	C 272	(B,150,76) 10 uF	CCG1192		C 527	(A,63,51)	CKSSYB104K10	
	C 273	(B,143,59)	CKSQYB475K6R3		C 528	(A,64,49)	CKSSYB104K10	
	C 274	(B,143,61)	CKSRYB102K50		C 529	(A,68,51)	CKSSYB104K10	
	C 275	(B,143,64)	CKSQYB475K6R3		C 530	(A,69,51)	CKSSYB104K10	
	C 281	(A,138,56) Capacitor	CEHVW221M16		C 531	(A,75,60)	CKSSYB104K10	
	C 282	(A,132,59)	CKSRYB105K16		C 532	(A,72,60)	CKSSYB104K10	
	C 283	(A,126,67)	CCSSCH220J50		C 533	(A,74,67)	CKSSYB104K10	
	C 284	(A,125,68)	CKSSYB153K16		C 534	(A,73,68)	CKSSYB104K10	
D	C 285	(A,130,73) Capacitor	CEVW221M10		C 535	(B,75,66)	CKSRYB104K16	
	C 287	(A,131,65)	CKSRYB105K16		C 536	(A,72,71)	CKSRYB104K16	
	C 301	(A,8,128) 10 uF	CCG1192		C 537	(A,72,75)	CKSSYB104K10	
	C 302	(A,14,127) 10 uF	CCG1192		C 538	(A,72,77)	CKSSYB104K10	
	C 303	(A,18,127) 10 uF	CCG1192		C 539	(A,77,73)	CCSSCH120J50	
	C 304	(A,34,130) 10 uF	CCG1192		C 540	(A,77,71)	CCSSCH120J50	
	C 305	(A,24,127) 10 uF	CCG1192		C 544	(A,62,81)	CKSSYB104K10	
	C 306	(A,34,128) 10 uF	CCG1192		C 545	(A,60,81)	CKSSYB104K10	
	C 313	(B,36,130)	CKSRYB102K50		C 546	(A,58,81)	CKSSYB104K10	
	C 314	(A,64,138)	CCSRCH100D50		C 551	(A,54,81)	CKSSYB104K10	
E	C 317	(B,26,143)	CCSRCH470J50		C 552	(A,50,81)	CKSSYB104K10	
	C 351	(A,75,132)	CKSRYB474K10		C 553	(A,48,80)	CKSSYB104K10	
	C 352	(A,75,133)	CKSRYB474K10		C 571	(A,25,84) 10 uF	CCG1192	
	C 353	(A,82,130)	CKSRYB474K10		C 572	(A,25,81)	CKSSYB104K10	
	C 354	(A,83,130)	CKSRYB474K10		C 574	(A,40,55)	CKSSYB103K16	
	C 355	(A,77,132)	CKSRYB474K10		C 581	(A,91,48) 10 uF	CCG1192	
	C 356	(A,77,133)	CKSRYB474K10		C 583	(A,80,46) 10 uF	CCG1192	
	C 357	(A,82,133)	CKSRYB474K10		C 585	(B,92,49) 10 uF	CCG1192	
	C 358	(A,83,133)	CKSRYB474K10		C 588	(B,86,43) 10 uF	CCG1192	
	C 361	(A,123,122) 3 300 uF/16 V	CCH1486		C 591	(A,77,61)	CKSSYB104K10	
	C 362	(B,88,143)	CKSRYB104K16		C 592	(A,77,59)	CKSSYB104K10	
F	C 363	(B,61,134) 2.2 uF	CCG1205		C 604	(A,95,82)	CCSSCH100D50	
	C 364	(B,64,134) 2.2 uF	CCG1205		C 605	(A,95,77)	CCSSCH120J50	
	C 365	(B,64,139) 10 uF	CCG1236		C 606	(A,97,89)	CKSSYB104K10	
	C 367	(A,59,132) 10 uF	CCG1192		C 607	(A,99,77)	CKSSYB105K6R3	

5		6		7		8	
<u>Circuit Symbol and No.</u>		<u>Part No.</u>		<u>Circuit Symbol and No.</u>		<u>Part No.</u>	
C 609	(A,121,74)	CKSRYB105K10		C 1032	(A,35,100) Capacitor	CEHVW101M16	
C 651	(A,100,90)	CKSRYB105K10		C 1062	(B,119,112)	CKSRYB104K16	
C 703	(A,85,34)	CCSSCH220J50					
C 704	(A,87,34)	CCSRCH100D50					
C 705	(A,89,34)	CCSSCH220J50					
C 706	(A,88,38)	CKSSYB103K16					
C 751	(A,134,47) 10 uF	CCG1192					
C 754	(A,137,47)	CKSSYB473K16					
C 801	(A,103,20)	CKSRYB104K16					
C 802	(B,113,22)	CKSRYB105K16					
C 821	(A,117,27)	CKSQYB105K16					
C 851	(A,23,117) 10 uF	CCG1192		IC 1821	(A,131,13) IC	BH2228FV	
C 852	(A,23,119)	CKSRYB104K16		IC 1901	(B,80,21) IC	PEG868A8	
C 853	(A,11,116)	CCSRCH271J50		IC 1902	(A,96,22) IC	PEH365A8	
C 854	(A,16,115)	CCSRCH681J50		IC 1931	(A,161,32) IR RC REC Module	PNJ4833M	
C 856	(A,8,122)	CEVW101M16		Q 1831	(A,130,21) Transistor	LSC4081UB	
C 857	(B,10,113) 10 uF	CCG1236		Q 1832	(A,134,21) Transistor	LSC4081UB	
C 861	(A,102,53) Capacitor	CEHVW221M16		Q 1833	(A,126,21) Transistor	LSC4081UB	
C 862	(A,115,44)	CKSRYB105K16		Q 1834	(A,137,27) Chip Transistor	HN1C01FU	
C 863	(A,116,49)	CCSSCH220J50		Q 1835	(A,122,25) Chip Transistor	HN1C01FU	
C 864	(A,117,49)	CKSSYB153K16		Q 1836	(A,131,25) Chip Transistor	HN1C01FU	
C 865	(A,106,39) Capacitor	CEVW221M10		Q 1861	(A,139,14) Transistor	LSC4081UB	
C 881	(A,25,49) (A)	CKSSYB104K16		Q 1862	(A,139,19) Transistor	LSC4081UB	
C 882	(A,29,49) (A)	CKSSYB104K10		Q 1863	(A,139,22) Transistor	LSC4081UB	
C 883	(A,27,44) (A)	CKSSYB104K10		Q 1870	(A,142,14) Chip Transistor	HN1C01FU	
C 884	(A,23,48) 10 uF(A)	CCG1192		Q 1871	(A,144,21) Chip Transistor	HN1C01FU	
C 886	(A,31,48) 10 uF(A)	CCG1192		Q 1872	(A,147,28) Chip Transistor	HN1C01FU	
C 887	(A,40,47) 10 uF(A)	CCG1192		D 1803	(A,115,21) Diode	CRG03	
C 901	(A,150,53) 1 000 uF/16 V	XCH3021		D 1831	(A,24,14) LED	SMLV56RGB1U1(Q)	
C 902	(A,156,47)	CKSSYB103K16		D 1832	(A,24,29) LED	SMLV56RGB1U1(Q)	
C 904	(B,150,45) 10 uF	CCG1192		D 1833	(A,56,7) LED	SMLV56RGB1U1(Q)	
C 905	(A,148,46)	CKSQYB475K6R3		D 1834	(A,56,32) LED	SMLV56RGB1U1(Q)	
C 907	(A,145,48)	CKSQYB475K6R3		D 1861	(A,152,12) LED	NSSM124-6717	
C 911	(A,44,108)	CKSSYB473K16		D 1862	(A,152,19) LED	NSSM124-6717	
C 912	(A,45,111)	CKSSYB104K16		D 1863	(A,152,40) LED	SMLV56RGB1U1(Q)	
C 913	(A,45,114) 10 uF	CCG1192		D 1901	(A,71,20) Diode	1SS352	
C 915	(A,49,111)	CEVW101M16		L 1901	(B,105,21) Inductor	LCTAW2R2J2520	
C 921	(A,114,127)	CKSSYB104K16		L 1981	(B,151,18) Inductor	CTF1389	
C 931	(A,90,121)	CKSRYB105K10		L 1982	(B,151,21) Inductor	CTF1389	
C 941	(A,103,127)	CKSRYB473K50		L 1983	(B,150,15) Inductor	CTF1389	
C 1001	(A,12,55) Capacitor(A)	CEVW471M10		TH1901	(A,71,15) Thermistor	CCX1079	
C 1002	(A,24,54) (A)	CEVW101M16		X 1901	(B,69,19) Ceramic Resonator 16.000 MHz	CSS1616	
C 1003	(A,21,48) (A)	CKSSYB104K16		S 1811	(A,56,19) Encoder(MULTI CONTROL)	CSD1168	
C 1004	(A,34,54) (A)	CEVW101M16		S 1931	(A,147,43) Push Switch	CSG1155	
C 1005	(A,38,50) (A)	CKSSYB104K16		S 1932	(A,160,43) Push Switch	CSG1155	
C 1006	(A,46,49) (A)	CKSRYB104K16		S 1933	(A,8,15) Push Switch	CSG1155	
C 1007	(A,15,34) (A)	CKSRYB105K10		S 1935	(A,32,9) Push Switch	CSG1155	
C 1008	(A,15,36) (A)	CKSRYB105K10		S 1937	(A,70,7) Push Switch	CSG1155	
C 1009	(B,54,32) (A)	CCSRCH120J50		S 1938	(A,38,31) Push Switch	CSG1155	
C 1010	(B,52,35) (A)	CCSRCH120J50		S 1939	(A,8,32) Push Switch	CSG1155	
C 1011	(B,51,39) (A)	CCSRCH120J50		S 1940	(A,45,12) Spring Switch	CSN1080	
C 1021	(A,29,101) 10 uF	CCG1236		S 1941	(A,45,26) Spring Switch	CSN1081	
C 1023	(A,27,101)	CKSSYB103K16		S 1942	(A,71,30) Push Switch	CSG1155	
C 1024	(B,12,99) 10 uF	CCG1236		S 1943	(A,9,25) Push Switch	CSG1155	
C 1025	(A,20,101)	CKSSYB681K50		CN1801	(B,109,10) Connector	CKS6287	
C 1026	(A,41,102) 47 uF	CCG1256		CN1951	(B,116,30) Connector	CKS6228	
C 1027	(A,15,96) 47 uF	CCG1256		JA1981	(A,161,21) Jack	YKN5006	
C 1028	(A,27,91) 2.2 uF	CCG1205					
C 1029	(A,23,92)	CKSSYB103K16					
C 1030	(A,22,91)	CKSSYB104K16					

B
Unit Number : (A)
Unit Number : (B)
Unit Name : Keyboard Unit

MISCELLANEOUS

IC 1821	(A,131,13) IC	BH2228FV
IC 1901	(B,80,21) IC	PEG868A8
IC 1902	(A,96,22) IC	PEH365A8
IC 1931	(A,161,32) IR RC REC Module	PNJ4833M
Q 1831	(A,130,21) Transistor	LSC4081UB
Q 1832	(A,134,21) Transistor	LSC4081UB
Q 1833	(A,126,21) Transistor	LSC4081UB
Q 1834	(A,137,27) Chip Transistor	HN1C01FU
Q 1835	(A,122,25) Chip Transistor	HN1C01FU
Q 1836	(A,131,25) Chip Transistor	HN1C01FU
Q 1861	(A,139,14) Transistor	LSC4081UB
Q 1862	(A,139,19) Transistor	LSC4081UB
Q 1863	(A,139,22) Transistor	LSC4081UB
Q 1870	(A,142,14) Chip Transistor	HN1C01FU
Q 1871	(A,144,21) Chip Transistor	HN1C01FU
Q 1872	(A,147,28) Chip Transistor	HN1C01FU
D 1803	(A,115,21) Diode	CRG03
D 1831	(A,24,14) LED	SMLV56RGB1U1(Q)
D 1832	(A,24,29) LED	SMLV56RGB1U1(Q)
D 1833	(A,56,7) LED	SMLV56RGB1U1(Q)
D 1834	(A,56,32) LED	SMLV56RGB1U1(Q)
D 1861	(A,152,12) LED	NSSM124-6717
D 1862	(A,152,19) LED	NSSM124-6717
D 1863	(A,152,40) LED	SMLV56RGB1U1(Q)
D 1901	(A,71,20) Diode	1SS352
L 1901	(B,105,21) Inductor	LCTAW2R2J2520
L 1981	(B,151,18) Inductor	CTF1389
L 1982	(B,151,21) Inductor	CTF1389
L 1983	(B,150,15) Inductor	CTF1389
TH1901	(A,71,15) Thermistor	CCX1079
X 1901	(B,69,19) Ceramic Resonator 16.000 MHz	CSS1616
S 1811	(A,56,19) Encoder(MULTI CONTROL)	CSD1168
S 1931	(A,147,43) Push Switch	CSG1155
S 1932	(A,160,43) Push Switch	CSG1155
S 1933	(A,8,15) Push Switch	CSG1155
S 1935	(A,32,9) Push Switch	CSG1155
S 1937	(A,70,7) Push Switch	CSG1155
S 1938	(A,38,31) Push Switch	CSG1155
S 1939	(A,8,32) Push Switch	CSG1155
S 1940	(A,45,12) Spring Switch	CSN1080
S 1941	(A,45,26) Spring Switch	CSN1081
S 1942	(A,71,30) Push Switch	CSG1155
S 1943	(A,9,25) Push Switch	CSG1155
CN1801	(B,109,10) Connector	CKS6287
CN1951	(B,116,30) Connector	CKS6228
JA1981	(A,161,21) Jack	YKN5006

RESISTORS

	1	2
	<u>Circuit Symbol and No.</u>	<u>Part No.</u>
	R 1801 (A,95,6)	RS1/10SR222J
	R 1802 (A,95,8)	RS1/10SR222J
A	R 1811 (A,65,16)	RS1/16SS103J
	R 1821 (A,126,14)	RS1/10SR272J
	R 1822 (A,126,12)	RS1/10SR272J
	R 1823 (A,126,13)	RS1/10SR272J
	R 1831 (A,132,18)	RS1/16SS102J
	R 1832 (A,133,18)	RS1/16SS102J
	R 1833 (A,131,18)	RS1/16SS102J
	R 1840 (A,128,24)	RS1/16SS101J
	R 1841 (A,129,25)	RS1/16SS101J
	R 1843 (A,135,24)	RS1/16SS101J
	R 1844 (A,134,23)	RS1/16SS101J
B	R 1846 (A,124,23)	RS1/16SS101J
	R 1847 (A,120,24)	RS1/16SS101J
	R 1849 (B,141,30)	RS1/10SR181J
	R 1850 (B,143,30)	RS1/10SR181J
	R 1851 (B,128,31)	RS1/10SR181J
	R 1852 (B,129,31)	RS1/10SR181J
	R 1853 (B,136,28)	RS1/10SR181J
	R 1854 (B,133,28)	RS1/10SR181J
	R 1861 (A,136,14)	RS1/16SS102J
	R 1862 (A,136,18)	RS1/16SS102J
	R 1863 (A,136,19)	RS1/16SS102J
C	R 1864 (A,140,12)	RS1/16SS101J
	R 1865 (A,127,24)	RS1/16SS101J
	R 1867 (A,141,17)	RS1/16SS101J
	R 1868 (A,137,23)	RS1/16SS101J
	R 1870 (A,142,22)	RS1/16SS101J
	R 1871 (A,123,22)	RS1/16SS101J
	R 1872 (B,139,11)	RS1/10SR181J
	R 1873 (B,136,11)	RS1/10SR181J
	R 1874 (B,139,21)	RS1/10SR181J
	R 1875 (B,140,23)	RS1/10SR181J
	R 1876 (B,145,30)	RS1/10SR181J
D	R 1877 (B,146,30)	RS1/10SR181J
	R 1901 (A,65,21)	RS1/16SS472J
	R 1902 (A,71,21)	RS1/16SS102J
	R 1903 (A,71,18)	RS1/16SS154J
	R 1904 (A,73,21)	RS1/16SS473J
	R 1905 (B,70,23)	RS1/16SS103J
	R 1906 (B,69,25)	RAB4CQ102J
	R 1907 (A,70,22)	RS1/16SS103J
	R 1908 (A,73,24)	RAB4CQ103J
	R 1909 (A,77,21)	RS1/16SS103J
E	R 1910 (A,69,24)	RAB4CQ473J
	R 1911 (B,81,31)	RS1/16SS473J
	R 1912 (B,83,31)	RS1/16SS473J
	R 1914 (A,83,28)	RS1/16SS101J
	R 1915 (B,90,29)	RAB4CQ101J
	R 1916 (A,83,17)	RS1/16SS101J
	R 1917 (B,90,26)	RAB4CQ101J
	R 1918 (B,93,24)	RAB4CQ101J
	R 1919 (B,93,21)	RAB4CQ101J
	R 1920 (B,90,18)	RAB4CQ101J
F	R 1921 (A,90,13)	RAB4CQ101J
	R 1922 (A,83,20)	RAB4CQ101J
	R 1923 (A,83,23)	RAB4CQ101J
	R 1924 (A,83,26)	RAB4CQ101J
	R 1925 (B,76,10)	RAB4CQ102J

3	4
<u>Circuit Symbol and No.</u>	<u>Part No.</u>
R 1926 (B,71,15)	RS1/16SS104J
R 1927 (A,73,15)	RS1/16SS2202F
R 1931 (B,146,25)	RS1/16SS470J
R 1953 (B,120,23)	RAB4CQ473J
R 1955 (A,113,28)	RAB4CQ101J

CAPACITORS

C 1821 (A,136,11)	CKSSYB103K16
C 1822 (A,135,11)	CKSRYB105K10
C 1903 (A,69,21)	CKSSYB104K10
C 1904 (B,70,22)	CKSSYB103K16
C 1905 (B,90,23)	CKSSYB103K16
C 1906 (A,84,17)	CKSSYB103K16
C 1931 (B,148,27) 10 uF	CCG1192
C 1951 (B,107,27)	CKSQYB334K50
C 1952 (B,112,21) 4.7 uF	CCG1212
C 1953 (B,112,23) 4.7 uF	CCG1212
C 1954 (B,115,21) 4.7 uF	CCG1212
C 1955 (B,115,23) 4.7 uF	CCG1212
C 1957 (B,117,24)	CKSSYB105K6R3
C 1981 (B,150,18)	CKSRYB472K50
C 1982 (B,148,18)	CKSRYB472K50
C 1983 (B,150,12)	CCSRCH471J50
C 1984 (B,148,21)	CCSRCH471J50
C 1985 (B,149,21)	CCSRCH471J50



Unit Number : CWX4023
Unit Name : CD Core Unit (S11.6STD)

MISCELLANEOUS

IC 201 (B,23,37) IC	PE5791A
IC 301 (A,37,11) IC	BD8223EFV
Q 101 (B,11,53) Transistor	2SA1577
Q 102 (B,15,54) Chip Digital Transistor	LTA123JUB
X 201 (B,25,49)Ceramic Resonator	16.934 MHz CSS1603
S 901 (A,42,53) Spring Switch(HOME)	CSN1080
S 903 (B,21,12) Spring Switch(DSCSNS)	CSN1081
CN101 (A,16,58) Connector	CKS4808
CN701 (A,25,29) Connector	CKS6146

RESISTORS

R 101 (B,6,57)	RS1/10SR2R4J
R 102 (B,8,57)	RS1/10SR2R4J
R 103 (B,9,57)	RS1/10SR2R7J
R 108 (B,18,55)	RS1/16SS105J
R 109 (B,12,50)	RS1/16SS222J
R 201 (A,24,11)	RS1/16SS0R0J
R 202 (A,23,9)	RS1/16SS0R0J
R 214 (B,18,28)	RS1/16SS103J
R 215 (B,17,28)	RS1/16SS393J
R 216 (B,12,35)	RS1/16SS122J
R 217 (B,10,32)	RS1/16SS562J
R 218 (B,10,35)	RS1/16SS472J
R 229 (B,12,34)	RS1/16SS471J
R 232 (A,31,54)	RS1/16SS0R0J
R 237 (B,33,45)	RS1/16SS221J

5
Circuit Symbol and No.

R 240 (B,34,40)
R 245 (A,34,46)
R 254 (A,37,56)
R 260 (B,30,27)
R 264 (A,22,9)

R 281 (B,33,38)
R 282 (B,33,39)
R 283 (B,35,38)
R 291 (B,33,34)
R 292 (B,33,36)

R 293 (B,35,39)
R 294 (B,27,48)
R 296 (B,34,43)
R 301 (A,27,9)
R 302 (A,28,9)

R 303 (A,27,11)
R 304 (A,28,11)
R 305 (A,26,9)
R 306 (A,26,11)
R 307 (A,25,9)

R 308 (A,25,11)
R 309 (A,35,6)
R 310 (B,30,9)
R 311 (B,30,10)
R 312 (B,30,11)

R 313 (B,30,12)
R 701 (A,21,38)
R 702 (A,23,38)
R 706 (A,32,42)
R 708 (B,28,26)

R 709 (B,29,28)

CAPACITORS

C 104 (B,12,57)
C 203 (B,22,47)
C 209 (B,28,47)
C 210 (B,33,43)
C 211 (B,33,41)

C 212 (B,22,28)
C 213 (B,18,26)
C 214 (B,17,26)
C 215 (B,19,28)
C 216 (B,12,33)

C 217 (B,10,34)
C 218 (B,10,36)
C 219 (B,14,34)
C 220 (A,18,38)
C 221 (B,14,32)

C 222 (B,13,37)
C 223 (B,12,42)
C 224 (B,13,45)
C 225 (B,13,46)
C 228 (B,10,33)

C 229 (B,9,40)
C 233 (B,32,46)
C 236 (B,8,40)
C 238 (A,25,44)
C 299 (A,26,41)

C 302 (B,28,12)

6
Part No.

RS1/16SS473J
RS1/16SS104J
RS1/16SS104J
RS1/16SS103J
RS1/16SS102J

RS1/16SS560J
RS1/16SS560J
RS1/16SS0R0J
RS1/16SS560J
RS1/16SS0R0J

RS1/16SS0R0J
RS1/16SS471J
RS1/16SS0R0J
RS1/16SS0R0J
RS1/16SS0R0J

RS1/16SS123J
RS1/16SS123J
RS1/16SS102J
RS1/16SS472J
RS1/16SS102J

RS1/16SS472J
RS1/16SS473J
RS1/16SS472J
RS1/16SS472J
RS1/16SS472J

RS1/16SS472J
RS1/16SS101J
RS1/16SS101J
RS1/16SS221J
RS1/16SS0R0J

RS1/16SS0R0J

7
Circuit Symbol and No.

C 303 (B,29,12)
C 304 (B,27,12)
C 305 (B,26,12)
C 306 (A,31,7)

C 307 (A,41,19)
C 308 (A,31,15)
C 710 (A,34,42)

8
Part No.

CKSSYB102K50
CKSSYB223K16
CKSSYB104K10
CKSSYB104K10

CKSRYB105K10
CKSRYB105K10
CKSSYB102K50

Miscellaneous Parts List

	Pickup Unit(P10.6)(Service)	CXX3556
M 1	Motor Unit(SPDL)	CXE2273
M 2	Motor Unit(LOAD/CRG)	CXC4026