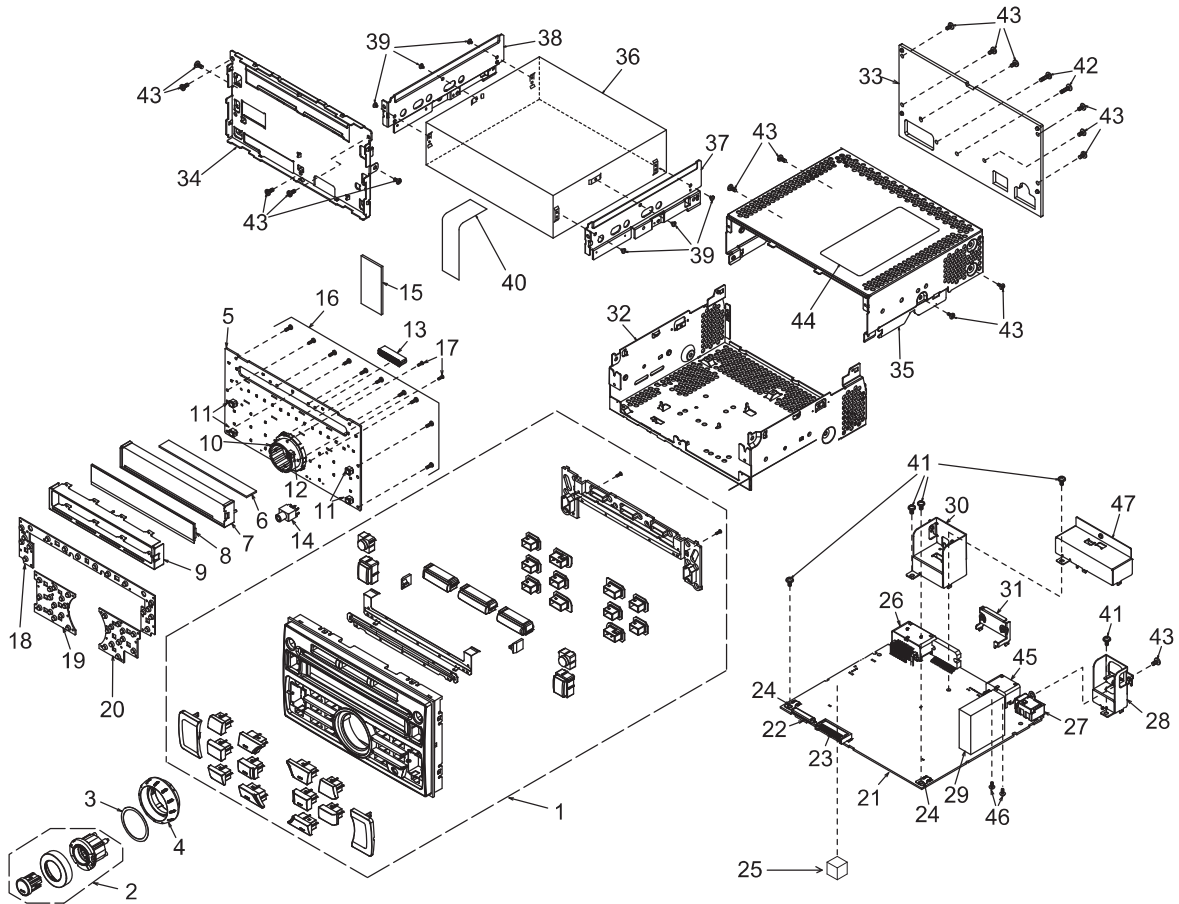


EXPLODED VIEW/PARTS LIST

Main section



NO.	PART NO.	DESCRIPTION	Q'TY	NO.	PART NO.	DESCRIPTION	Q'TY
1	940-8454-10	ESCUTCHEON-ASSY	1	25	345-5805-01	GASKET	1
2	947-0750-00	KNOB ASSY	1	26	074-4009-20	OUTLET SOCKET	1
3	347-8677-00	SHADE	1	27	092-2210-01	ANT-RECEPT	1
4	380-5743-00	KNOB	1	28	331-4753-00	ANT-HOLDER	1
5	-----	SWITCH PWB	1	29	880-2091L	TUNER	1
6	345-6311-01	RUBBER CONNECT	1	30	331-4756-00	SOCKET HOLDER	1
7	335-8511-00	LCD HOLDER	1	31	331-4755-00	IC-HOLDER	1
8	379-1419-52	INDICATOR	1	32	311-1975-00	LOWER CASE	1
9	331-4757-00	LCD COVER	1	33	313-2067-30	HEAT SINK	1
10	016-7004-00	ROTARY SWITCH	1	34	309-1896-10	ES-PLATE	1
11	013-6202-52	TACT SWITCH	4	35	310-1900-10	UPPER CASE	1
12	013-6201-53	SWITCH	1	36	929-0410-80	CD-CHANG-MODULE	1
13	074-3033-26	OUTLET SOCKET	1	37	331-4760-00	6CD BRKT(R)	1
14	075-0395-01	JACK	1	38	331-4759-00	6CD BRKT(L)	1
15	345-6351-00	CUSHION RUBBER	1	39	716-3552-00	SCREW (M2.3 x 2.5)	6
16	716-0778-52	WAVE SCREW (M2 x 6)	10	40	816-4024-50	FLAT WIRE	1
17	716-0872-51	SCREW (M1.7 x 6)	2	41	716-0878-50	SCREW (M2.6 x 5)	5
18	345-6307-00	RUBBER SW(UP)	1	42	735-2614-1B	D-SEMS SCREW (M2.6x14)	2
19	345-6308-00	RUBBER SW(LH)	1	43	714-2606-8B	MACHINE SCREW (M2.6 x 6)	16
20	345-6309-00	RUBBER SW(RH)	1	44	276-0705-05	SETPLATE	1
21	-----	MAIN PWB	1	45	074-1302-16	OUTLET SOCKET	1
22	074-1237-69	OUTLET SOCKET	1	46	778-3006-00	TAP-SCREW (M3x6)	2
23	076-3011-76	PLUG	1	47	331-4754-00	SHIELD CASE	1
24	073-0762-90	TERMINAL	2				

ELECTRICAL PARTS LIST

The following parts are different from the original model. Other parts are the same as PP-3091H-A. Please refer to page 7 of the original manual.

Main PWB(B1) section

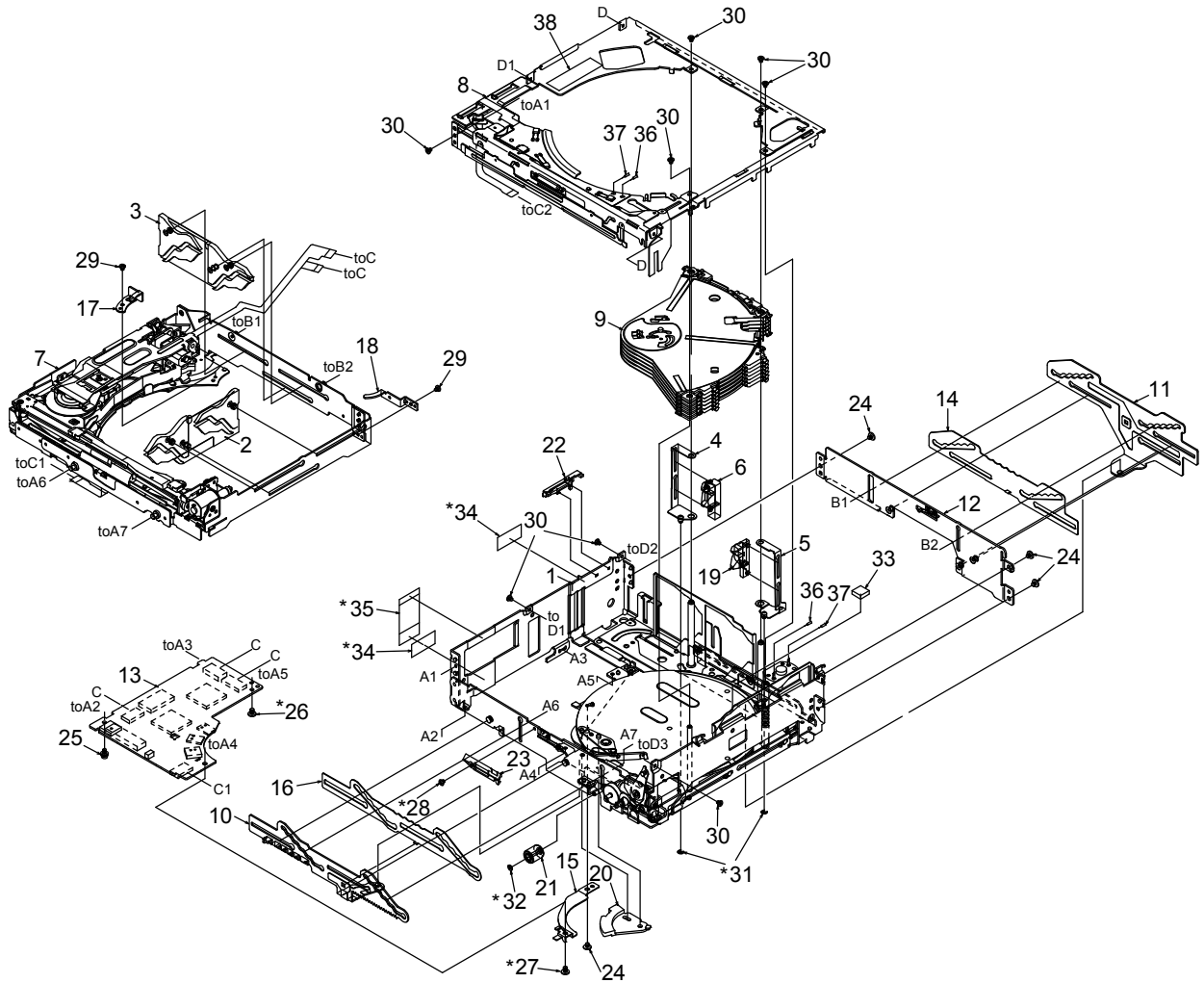
REF No.	PART No.	DESCRIPTION
C219	168-3332-78	0.033uF K
C220	168-3332-78	0.033uF K
C221	168-4722-55	4700pF K
C222	168-4722-55	4700pF K
C224	168-1042-78	16V 0.1uF K
C9001	-----	NO USE
D108	001-9210-50	AVR- M1608C270MTAAD
D109	001-9210-50	AVR- M1608C270MTAAD
D110	001-4320-50	EDZC6.8B

REF No.	PART No.	DESCRIPTION
D208	001-0580-90	1SS352
D511	001-4320-50	EDZC6.8B
D514	001-4320-50	EDZC6.8B
J101	074-1302-16	16P
Q210	125-0006-90	UNR2110
Q211	125-2027-91	DTC114EUA
R222	119-3011-15	1/10W 300 ohm
R232	032-0140-89	1/10W 47k ohm F
R233	032-0140-89	1/10W 47k ohm F
R239	119-1031-15	1/10W 10k ohm
R240	119-6821-15	1/10W 6.8k ohm

REF No.	PART No.	DESCRIPTION
R413	119-3311-15	1/10W 330 ohm
R414	119-3311-15	1/10W 330 ohm
R434	119-1031-15	1/10W 10k ohm
R435	119-1031-15	1/10W 10k ohm
R498	119-1041-15	1/10W 100k ohm
R499	119-1041-15	1/10W 100k ohm
R570	119-0000-05	1/10W 0 ohm JW
R571	119-0000-05	1/10W 0 ohm JW
TM503	-----	NO USE

EXPLODED VIEW/PARTS LIST

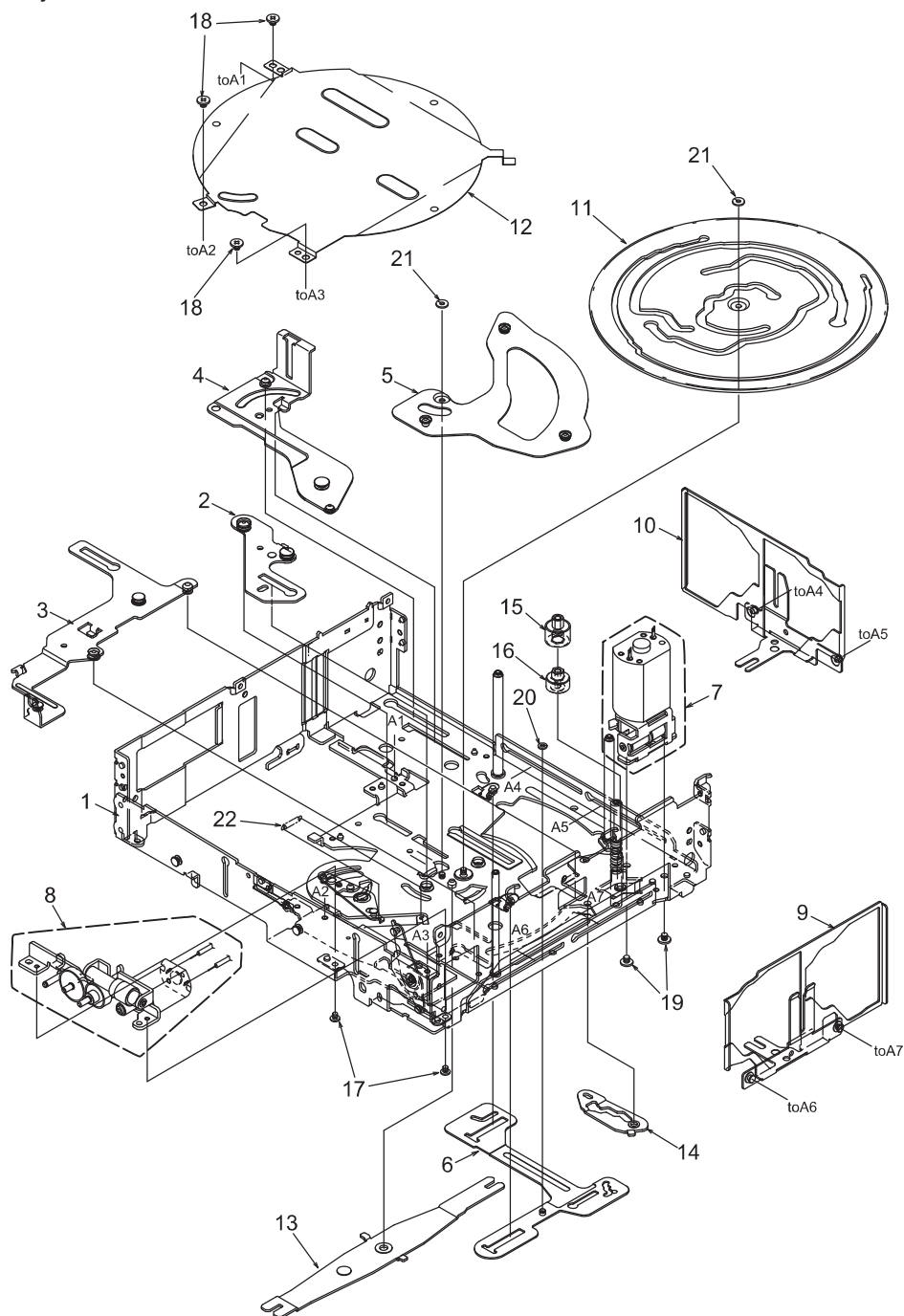
Main section



* Do not reuse the following parts.
(No.26,27,28,32,31,34,35)

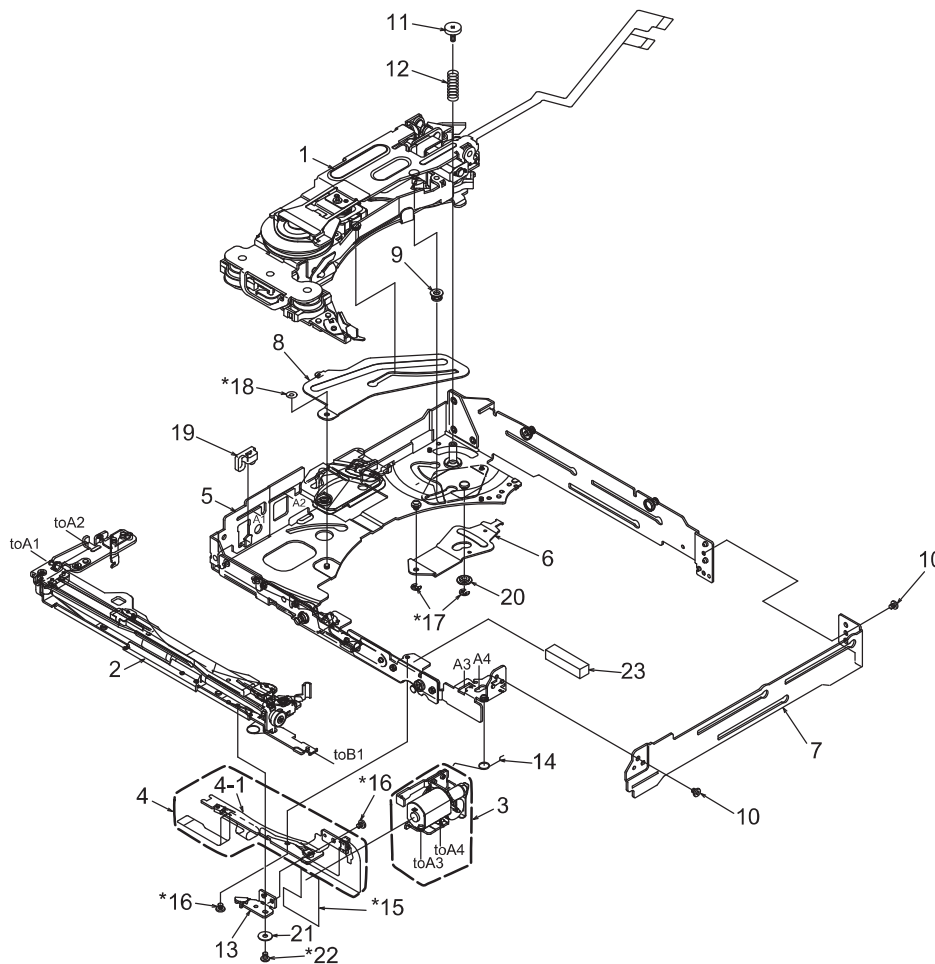
NO.	PART NO.	DESCRIPTION	Q'TY	NO.	PART NO.	DESCRIPTION	Q'TY
1	-----	LOWER UNIT ASSY	1	20	621-1812-20	SW LINK	1
2	HBS-617-100	KUSABI-ASSY-S	1	21	621-1765-20	UD-GEAR-D	1
3	HBS-618-100	KUSABI-ASSY-R	1	22	621-1715-20	FPC-STOPPER	1
4	966-1846-20	DS-SP-ASSY L	1	23	621-1763-20	LOADING GUIDE B	1
5	966-1847-21	DS-SP ASSY R	1	24	716-1850-01	SCREW(M2.0x2)	4
6	966-1898-21	DISC STP-ASSY L	1	25	716-3598-00	SCREW(M2.0x4)	1
7	966-1899-20	DRIVE-CH UNIT	1	26	716-3599-00	SCREW(M2.0x2 sealock)	1
8	966-1840-23	UPPER UNIT ASSY	1	27	716-3600-00	SCREW(M2.0x3 sealock)	1
9	HBS-602-100	DISCHOLDER UNIT	1	28	716-3601-00	SCREW(M1.7x2 sealock)	1
10	966-1771-21	SLIDE-P-ASSY	1	29	716-3450-00	SCREW(M1.7x2.0)	2
11	966-1814-21	SLIDE-P-ASSY-R	1	30	716-3451-01	SCREW(M1.7x2.5)	8
12	966-1874-20	REAR-P-ASSY R	1	31	744-0045-01	C-RING	2
13	HBS-658-100	CD PWB ASSY	1	32	746-0761-00	WASHER	1
14	620-1662-21	GAP PLATE R	1	33	345-5824-00	RUBBER PART	1
15	620-1640-20	SW-H-PLATE	1	34	347-8230-00	PROTECT SHEET	2
16	620-1778-21	GAP PLATE F	1	35	347-8219-00	FPC-SHEET N	1
17	620-1685-21	DS-PLATE L	1	36	800-4921-60	VINYL-COAT-WIRE	1
18	620-1686-20	DS-PLATE R	1	37	802-4921-60	VINYL-COAT-WIRE	1
19	621-1819-20	DISC STOPPER R	1	38	293-8575-00	MECH LABEL	1

Lower unit assy section



NO.	PART NO.	DESCRIPTION	Q'TY	NO.	PART NO.	DESCRIPTION	Q'TY
1	966-1834-24	LOWER-C-ASSY	1	12	620-1624-24	GEAR COVER	1
2	966-0658-22	DH-SP-ASSY	1	13	620-1848-21	UD LINK	1
3	966-1836-22	TATSU-P-ASSY	1	14	620-1869-20	DS-SHIFT LINK	1
4	966-1832-20	D-SHT PL-B-ASSY	1	15	621-1811-21	M-GEAR B	1
5	966-0659-22	DH-SP-ASSY B	1	16	621-0733-20	M-GEAR C	1
6	966-1835-24	DS-SP-ASSY	1	17	716-3451-01	SCREW(M1.7x2.5)	2
7	HBS-622-100	M-MTR SUB ASSY	1	18	716-1850-01	SCREW(M2.0x2.0)	3
8	HBS-616-100	UD-MOTOR-ASSY	1	19	716-1851-03	SCREW(M2.0x3.0)	2
9	966-1872-20	INITIAL ASSY S	1	20	746-0870-00	WASHER	1
10	966-1873-20	INITIAL ASSY R	1	21	746-0768-00	WASHER	2
11	620-1623-24	CAM GEAR	1	22	750-6756-21	SW-L-SPRING	1

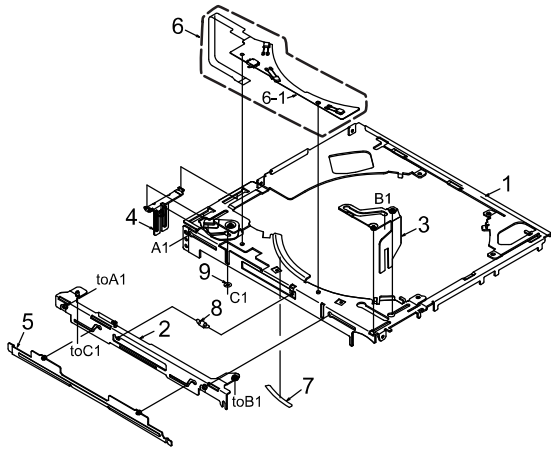
Drive-CH unit section



* Do not reuse the following parts.
(No.15,16,17,18,22)

NO.	PART NO.	DESCRIPTION	Q'TY	NO.	PART NO.	DESCRIPTION	Q'TY
1	HBS-656-100	N-DRIVE UNIT	1	12	750-6852-20	DRIVE SPRING A	1
2	HBS-612-100	LOADING-U-ASSY	1	13	620-1831-21	S-PWB PLATE	1
3	HBS-615-100	LO-MOTOR-S-ASSY	1	14	750-6754-20	LO-ES-SPRING B	1
4	HBS-614-100	L-SEN-FPC-ASSY	1	15	345-5424-01	SEN-FPC GUIDE	1
4-1	-----	SENSOR-L-FPC	1	16	716-3601-00	SCREW(M1.7x2 sealock)	2
5	966-1828-22	DRIVE-CH A-ASSY	1	17	743-1500-1B	E-RING	2
6	620-1838-21	D-SHIFT LINK A	1	18	746-0870-00	WASHER	1
7	620-1837-20	DRIVE CHASSIS B	1	19	621-1807-00	RUBBER PART	1
8	620-1836-20	DR-SUPPORT-PL	1	20	622-1850-20	D-SHIFT ROLLERE	1
9	622-1743-21	D-SHIFT ROLLER B	1	21	347-8392-00	FPC WASHER	1
10	716-3450-00	SCREW(M1.7x2)	2	22	716-3451-02	SCREW(M1.7x2.5 sealock)	1
11	716-3603-00	SCREW(M1.7x5)	1	23	345-2568-01	RUBBER PART	1

Upper unit assy section



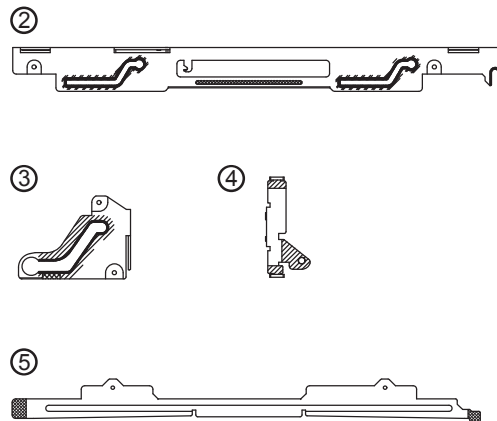
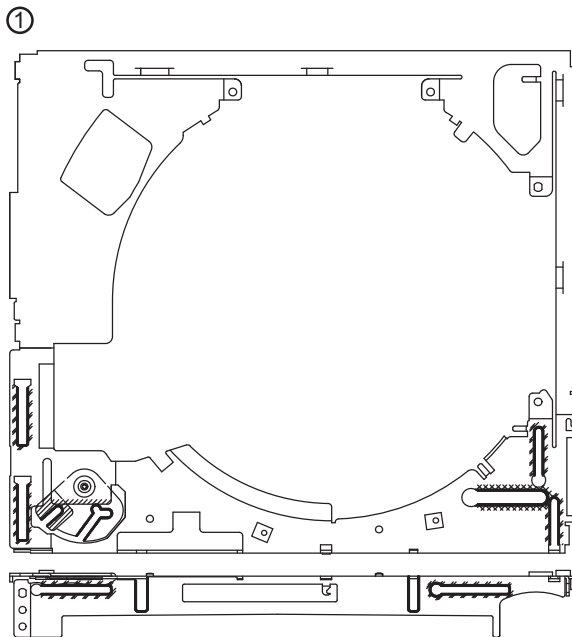
* Do not reuse the following parts.
(No.6,7,9)

NO.	PART NO.	DESCRIPTION	Q'TY
1	966-1823-21	UPPER-CHA-ASSY	1
2	966-1824-20	LO-SHIFT A ASSY	1
3	966-1791-20	LO-SHIFT B ASSY	1
4	966-1825-20	LO-SHIFT C ASSY	1
5	966-1826-20	SHUTTER ASSY	1
6	HBS-613-100	U-SEN-FPC-ASSY	1
6-1	-----	SENSOR-U-FPC	1
7	347-8216-00	RATTLE SHEET	1
8	750-6850-21	SHUTTER SPRING	1
9	746-0870-00	WASHER	1

[Grease Point]

* Grease : SANKOL FG-87HSR

	Put grease on the surface	
	Put grease on the reverse side	
	Put grease on the both sides	
	Put grease on the edge	



ELECTRICAL PARTS LIST

CD PWB(BM1) section

* The parts of the same reference number are alternative

REF No.	PART No.	DESCRIPTION	REF No.	PART No.	DESCRIPTION	REF No.	PART No.	DESCRIPTION
C1	168-1052-78	16V 1uF K	C75	168-1042-78	16V 0.1uF K	R13	119-1011-15	1/10W 100 ohm
C3	168-1042-78	16V 0.1uF K	C76	168-5622-55	5600pF K	R14	119-2231-15	1/10W 22k ohm
C4	043-0559-90	6.3V 22uF	C77	168-1032-55	0.01uF K	R15	119-8231-15	1/10W 82k ohm
C5	168-1032-55	0.01uF K	C79	166-1501-50	15pF CH	R16	119-1041-15	1/10W 100k ohm
C6	042-1702-90	6.3V 100uF	C80	166-1501-50	15pF CH	R17	119-1041-15	1/10W 100k ohm
C7	168-1052-78	16V 1uF K	C81	168-3332-78	0.033uF K	R18	119-1041-15	1/10W 100k ohm
C9	168-1052-78	16V 1uF K	C101	043-0563-90	16V 47uF	R19	119-1041-15	1/10W 100k ohm
C11	168-1052-78	16V 1uF K	CCT1	050-0145-59	1/16W 22 ohm x4	R20	119-1041-15	1/10W 100k ohm
C12	042-0671-01	10V 47uF TA	CCT2	050-0145-54	1/16W 47k ohm x4	R21	119-2221-15	1/10W 2.2k ohm
C13	168-1052-78	16V 1uF K	CCT3	050-0145-54	1/16W 47k ohm x4	R22	119-4711-15	1/10W 470 ohm
C14	168-1042-78	16V 0.1uF K	CCT4	050-0145-55	1/16W 10k ohm x4	R23	119-1051-15	1/10W 1M ohm
C15	168-1052-78	16V 1uF K	CCT5	050-0140-55	1/32W 2.2k ohmx4J	R24	119-2211-15	1/10W 220 ohm
C16	043-0559-90	6.3V 22uF	D1	001-4301-14	HZU 3.0B1	R25	119-2211-15	1/10W 220 ohm
C17	168-1032-55	0.01uF K	D1	001-0529-14	MA8030-L	R26	119-1041-15	1/10W 100k ohm
C18	168-1052-78	16V 1uF K	D2	001-0367-91	1SS226	R28	119-1041-15	1/10W 100k ohm
C19	043-0559-90	6.3V 22uF	D3	001-4301-13	HZU 2.7B2	R29	119-1041-15	1/10W 100k ohm
C20	168-1042-78	16V 0.1uF K	D3	001-0529-13	MA8027H-TX	R30	119-4701-15	1/10W 47 ohm
C21	168-1032-55	0.01uF K	D4	001-4301-18	HZU 3.6B1	R31	119-2201-15	1/10W 22 ohm
C23	043-0559-90	6.3V 22uF	D4	001-0529-18	MA8036-L	R33	119-2211-15	1/10W 220 ohm
C24	043-0559-90	6.3V 22uF	D5	001-2612-90	RB520S-30	R35	119-1051-15	1/10W 1M ohm
C25	168-4732-78	0.047uF K	D6	001-2612-90	RB520S-30	R36	119-4721-15	1/10W 4.7k ohm
C26	166-4711-50	470pF CH	D7	001-9210-50	AVR- M1608C270MTAAD	R37	119-4731-15	1/10W 47k ohm
C28	168-4732-78	0.047uF K	D8	001-9210-50	AVR- M1608C270MTAAD	R38	119-2231-15	1/10W 22k ohm
C29	166-4711-50	470pF CH	IC2	052-5071-32	TMP91CY22IFG- 7BH6	R39	119-1041-15	1/10W 100k ohm
C30	166-1007-50	10pF CH	IC3	051-6733-30	TC94A70FG-010	R40	119-4721-15	1/10W 4.7k ohm
C31	166-1007-50	10pF CH	IC4	051-6060-08	BD7961FM-E2	R41	119-4731-15	1/10W 47k ohm
C32	168-1042-78	16V 0.1uF K	IC5	051-5445-08	BD5227G-TR	R43	119-4731-15	1/10W 47k ohm
C33	168-2222-55	2200pF K	IC8	051-9402-78	BR93L56RFVM-W	R44	119-2201-15	1/10W 22 ohm
C34	168-1042-78	16V 0.1uF K	IC9	051-6072-08	BD7931FE2	R45	119-1511-15	1/10W 150 ohm
C35	168-1042-78	16V 0.1uF K	IC10	051-5833-00	GP1S093HCZ	R46	119-4721-15	1/10W 4.7k ohm
C36	168-1042-78	16V 0.1uF K	IC11	051-3392-90	S-1323B15NB- N8ATFG	R48	119-1041-15	1/10W 100k ohm
C37	168-6822-55	6800pF K	J1	074-1237-69	19P	R49	119-0000-05	1/10W 0 ohm JW
C39	168-1042-78	16V 0.1uF K	J2	074-1201-65	15P	R50	119-2211-15	1/10W 220 ohm
C40	168-3332-78	0.033uF K	J3	074-1138-56	6P	R51	119-0000-05	1/10W 0 ohm JW
C41	168-1042-78	16V 0.1uF K	J4	074-1100-61	11P	R52	119-1041-15	1/10W 100k ohm
C42	168-1042-78	16V 0.1uF K	J5	074-1201-61	11P	R53	119-5621-15	1/10W 5.6k ohm
C43	168-1042-78	16V 0.1uF K	Q1	060-0252-01	PT4850F	R55	119-3341-15	1/10W 330k ohm
C45	168-1042-78	16V 0.1uF K	Q2	125-0021-91	DTA114EUA	R56	119-4731-15	1/10W 47k ohm
C46	168-1042-78	16V 0.1uF K	Q3	198-3018-00	2SK3018	R57	119-2231-15	1/10W 22k ohm
C48	168-1042-78	16V 0.1uF K	Q4	190-2060-00	2SA2060	R58	119-0000-05	1/10W 0 ohm JW
C49	168-1042-78	16V 0.1uF K	Q8	190-2060-00	2SA2060	R59	119-1511-15	1/10W 150 ohm
C50	168-1042-78	16V 0.1uF K	Q9	125-9026-90	IMF29	R60	119-4731-15	1/10W 47k ohm
C51	168-1042-78	16V 0.1uF K	Q10	125-2027-91	DTC114EUA	R61	119-1041-15	1/10W 100k ohm
C52	168-5622-55	5600pF K	Q11	125-0021-91	DTA114EUA	R62	119-1041-15	1/10W 100k ohm
C53	168-1042-78	16V 0.1uF K	Q12	125-2027-91	DTC114EUA	R63	119-1041-15	1/10W 100k ohm
C54	166-6801-50	68pF CH	Q13	125-9026-90	IMF29	R64	119-1011-15	1/10W 100 ohm
C55	168-1532-55	0.015uF K	R1	119-6811-15	1/10W 680 ohm	R65	119-1041-15	1/10W 100k ohm
C56	168-1042-78	16V 0.1uF K	R2	119-6811-15	1/10W 680 ohm	R66	117-5611-15	1/8W 560 ohm
C57	168-1032-55	0.01uF K	R3	032-0163-91	1/2W 10 ohm	R67	117-7511-15	1/8W 750 ohm
C58	168-1042-78	16V 0.1uF K	R4	032-0163-91	1/2W 10 ohm	R68	117-7511-15	1/8W 750 ohm
C59	168-1042-78	16V 0.1uF K	R5	119-2231-15	1/10W 22k ohm	R69	119-1041-15	1/10W 100k ohm
C60	168-1522-55	1500pF K	R6	116-1001-15	1/4W 10 ohm	R81	116-1591-15	1/4W 1.5 ohm
C61	168-3322-55	3300pF K	R7	119-1021-15	1/10W 1k ohm	R201	119-0000-05	1/10W 0 ohm JW
C62	168-1032-55	0.01uF K	R8	116-1591-15	1/4W 1.5 ohm	R212	119-1041-15	1/10W 100k ohm
C64	168-1042-78	16V 0.1uF K	R9	119-2231-15	1/10W 22k ohm	S1	013-7416-50	SPVL110200
C65	168-1032-55	0.01uF K	R10	119-4711-15	1/10W 470 ohm	S2	013-7416-50	SPVL110200
C67	168-1032-55	0.01uF K	R11	119-2211-15	1/10W 220 ohm	S3	013-7412-50	SPVG21
C69	168-1532-55	0.015uF K	R12	119-6811-15	1/10W 680 ohm	S4	013-7415-50	SPVG110400
C70	166-4701-50	47pF CH				X1	061-3534-90	16.92MHz
C71	168-1042-78	16V 0.1uF K				X3	060-1545-90	20MHz
C72	168-1042-78	16V 0.1uF K				PWB	039-3026-20	PWB(WITHOUT COMPONENT)
C74	166-6097-50	6pF CH						

Sensor-L-PFC(BM2) section

REF No.	PART No.	DESCRIPTION	REF No.	PART No.	DESCRIPTION	REF No.	PART No.	DESCRIPTION
PT1	060-0252-01	PT14850F	PT3	051-5833-00	GP1S093HCZ	PWB	039-3003-20	PWB(WITHOUT COMPONENTS)
PT2	060-0252-01	PT14850F						

Sensor-U-PFC(BM3) section

REF No.	PART No.	DESCRIPTION	REF No.	PART No.	DESCRIPTION	REF No.	PART No.	DESCRIPTION
LED1	001-7077-00	GL4804	LED3	001-7042-00	GL4800	PWB	039-3004-20	PWB(WITHOUT COMPONENTS)
LED2	001-7042-00	GL4800	S5	013-7417-50	ABC1122P161			