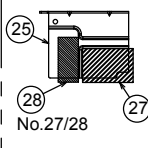
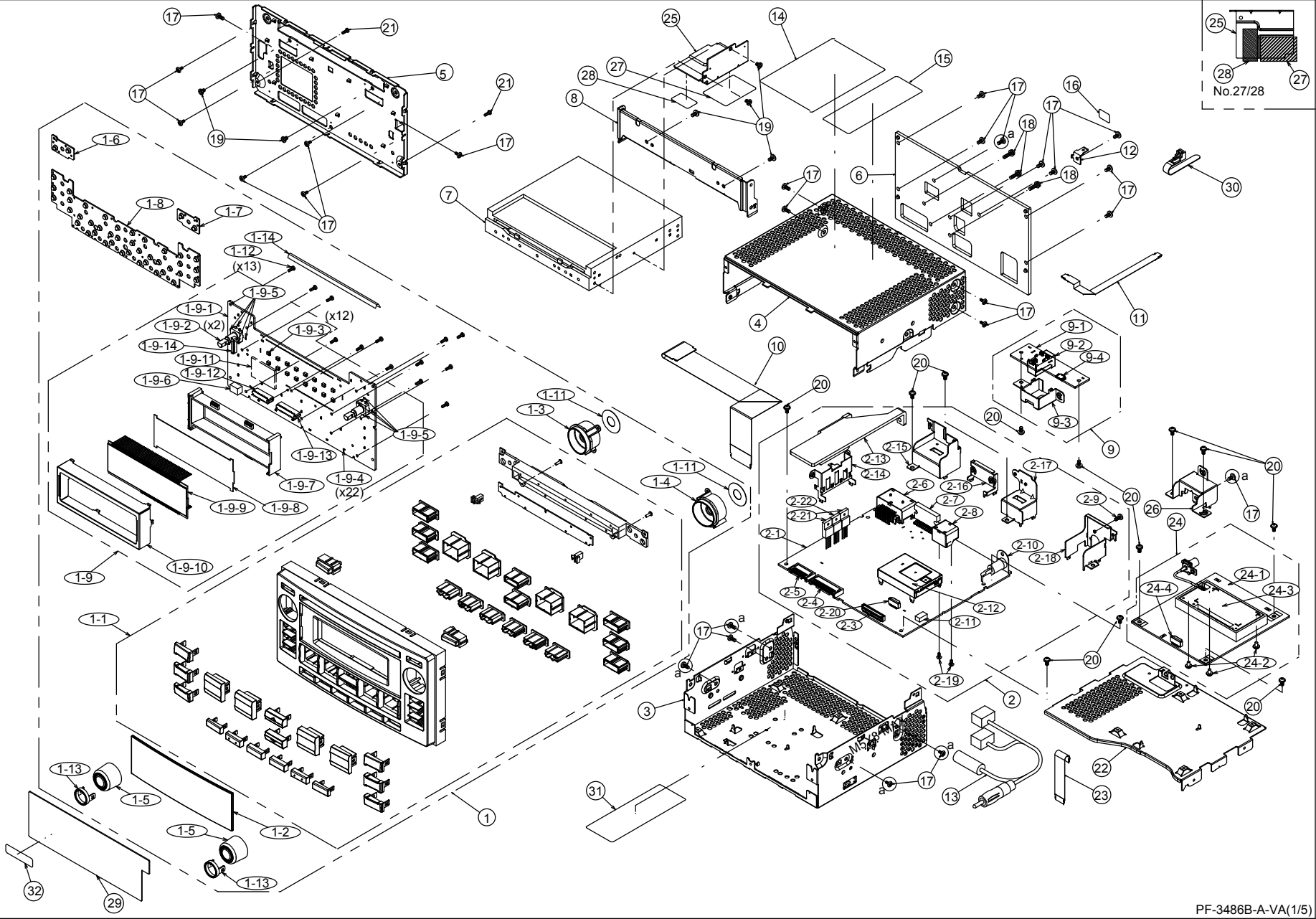


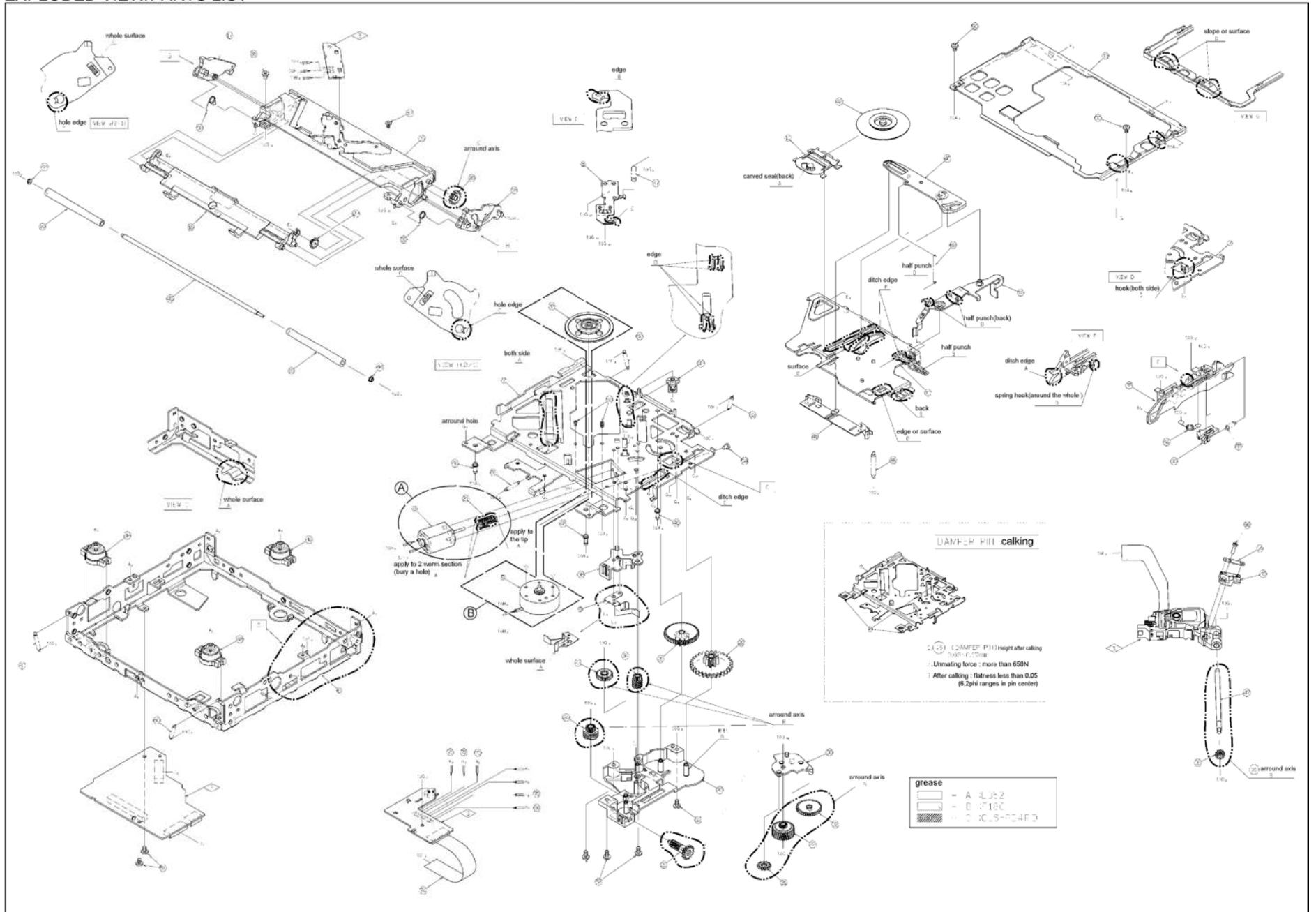
EXPLODED VIEW / PARTS LIST

PF-3486B-B
PF-3746B-A



| NO. | PART NO. | DESCRIPTION | Q'TY | NO. | PART NO. | DESCRIPTION | Q'TY |
|--------|-------------|---------------------------------|------|------|-------------|----------------------------------|------|
| 1 | ----- | PANEL-ASSY(3486B0-45)(PF3486BB) | 1 | 2-19 | 778-3006-00 | TAP-SCREW | 2 |
| | ----- | PANEL-ASSY(3746A0-45)(PF3746BA) | 1 | 2-20 | 074-2264-70 | OUTLET SOCKET | 1 |
| 1-1 | 940-8785-00 | ES-ASSY(for PF3486BB) | 1 | 2-21 | 051-3333-00 | IC(NJM2396F05) | 2 |
| | 940-8785-50 | ES-ASSY(for PF3746BA) | 1 | 2-22 | 051-3366-00 | IC(NJM2396F08) | 1 |
| 1-2 | 373-1194-22 | DIAL-CVR | 1 | 3 | 311-2049-00 | LOWER CASE | 1 |
| 1-3 | 335-8802-00 | ILLUMI RING(L) | 1 | 4 | 310-1920-01 | UPPER CASE | 1 |
| 1-4 | 335-8831-00 | ILLUMI RING(R) | 1 | 5 | 309-1960-02 | ES PLATE | 1 |
| 1-5 | 380-5796-01 | KNOB | 2 | 6 | 313-2161-11 | HEAT SINK | 1 |
| 1-6 | 345-6424-00 | RUBBER SW(UP-L) | 1 | 7 | 929-5220-80 | CD-MECH-MODULE | 1 |
| 1-7 | 345-6426-00 | RUBBER SW(UP-R) | 1 | 8 | 331-5343-00 | MECH BRKT | 1 |
| 1-8 | 345-6425-00 | RUBBER SW(MID) | 1 | 9 | ----- | SUB-PWB-ASSY(3486A7-79) | 1 |
| 1-9 | ----- | SW-PWB-ASSY(3486A7-77) | 1 | 9-1 | ----- | SUB PWB(401000-039) | 1 |
| 1-9-1 | ----- | SW PWB(408300-039) | 1 | 9-2 | 074-4061-04 | OUTLET SOCKET | 1 |
| 1-9-2 | 016-0018-24 | VR W/SHAFT | 2 | 9-3 | 331-5344-00 | USB HOLDER | 1 |
| 1-9-3 | 001-7140-90 | DIODE(WHT/SMLZ14WBECW1) | 12 | 9-4 | 074-2262-60 | OUTLET SOCKET | 1 |
| 1-9-4 | 001-7141-90 | DIODE(RED/VFHR1111C-4BY2A-TR) | 22 | 10 | 816-3121-55 | FLAT WIRE(50 seg.) | 1 |
| 1-9-5 | 001-7094-92 | DIODE(RED/VFR1112H-6A83A2-TR) | 8 | 11 | 816-3119-55 | FLAT WIRE(10 seg.) | 1 |
| 1-9-6 | 060-8094-50 | CERAMIC-ANT | 1 | 12 | 331-3579-20 | EARTH PLATE | 1 |
| 1-9-7 | 335-9360-02 | LCD-HOLDER | 1 | 13 | 093-2206-02 | ANT-JUMPER(for PF3486BB) | 1 |
| 1-9-8 | 335-8828-00 | FILTER | 1 | | 093-2206-03 | ANT-JUMPER(for PF3746BA) | 1 |
| 1-9-9 | 379-1474-63 | LCD | 1 | 14 | 276-1136-20 | SETPLATE (for PF3486BB) | 1 |
| 1-9-10 | 331-4918-00 | LCD-CVR | 1 | | 276-1136-33 | SETPLATE (for PF3746BA) | 1 |
| 1-9-11 | 060-8144-90 | BLUETOOTH MODUL | 1 | 15 | 290-0754-00 | LABEL(HD) | 1 |
| 1-9-12 | 074-3055-20 | OUTLET SOCKET | 1 | 16 | 290-0548-54 | LABEL (FR74)(for PF3486BB) | 1 |
| 1-9-13 | 074-3055-24 | OUTLET SOCKET | 1 | | 290-0548-67 | LABEL (FR64)(for PF3746BA) | 1 |
| 1-9-14 | 076-6000-65 | PLUG | 1 | 17 | 714-2606-8B | MACHINE SCREW | 25 |
| 1-11 | 347-8873-00 | SHADE | 2 | 18 | 735-2614-1B | D-SEMS SCREW | 3 |
| 1-12 | 716-0778-52 | SPECIAL SCREW | 13 | 19 | 714-2603-89 | MACHINE SCREW | 6 |
| 1-13 | 380-5797-01 | KNOB RING | 2 | 20 | 716-0878-50 | SPECIAL SCREW | 12 |
| 1-14 | 347-9245-00 | FILM | 1 | 21 | 716-0778-52 | SPECIAL SCREW | 2 |
| 2 | ----- | MAIN-PWB-ASSY(3486A7-75) | 1 | 22 | 331-5345-01 | XM BRKT | 1 |
| 2-1 | ----- | MAIN PWB(400700-039) | 1 | 23 | 816-3120-55 | FLAT WIRE | 1 |
| 2-2 | - | - | - | 24 | ----- | XM-PWB-ASSY(3486A7-78)(PF3486BB) | 1 |
| 2-3 | 074-2261-00 | OUTLET SOCKET | 1 | | ----- | XM-PWB-ASSY(3630A7-78)(PF3746BA) | 1 |
| 2-4 | 076-3011-74 | PLUG | 1 | 24-1 | ----- | XM PWB(400800-039) | 1 |
| 2-5 | 076-3011-70 | PLUG | 1 | 24-2 | 780-2604-50 | IT SCREW | 3 |
| 2-6 | 074-4009-20 | OUTLET SOCKET | 1 | 24-3 | 941-0251-60 | XM TUNER PACK(for PF3486BB) | 1 |
| 2-7 | 051-2064-00 | IC (TB2926HQ) | 1 | | 941-0251-70 | XM TUNER PACK(for PF3746BA) | 1 |
| 2-8 | 074-1302-16 | OUTLET SOCKET | 1 | 24-4 | 074-2264-70 | OUTLET SOCKET | 1 |
| 2-9 | 714-2606-8B | MACHINE SCREW | 1 | 25 | 331-5347-01 | SUB MECH BRKT | 1 |
| 2-10 | 092-0702-50 | ANT-RECEPT | 1 | 26 | 331-5346-00 | ANT HOLDER | 1 |
| 2-11 | 076-0478-59 | PLUG | 1 | 27 | 347-9128-00 | PROTECTOR(34x23) | 1 |
| 2-12 | 941-0258-01 | HD TUNER PACK | 1 | 28 | 347-9129-00 | PROTECTOR(31x12) | 1 |
| 2-13 | 313-2162-00 | SUB HEAT SINK | 1 | 29 | 347-9145-00 | PROTECTOR(140x55) | 1 |
| 2-14 | 331-4414-00 | TR HOLDER | 1 | 30 | 335-9440-00 | LEAD HOLDER | 1 |
| 2-15 | 331-5341-00 | OUTLET HOLDER | 1 | 31 | 290-8160-20 | LABEL(XM) | 1 |
| 2-16 | 331-4678-00 | IC-HOLDER | 1 | 32 | 290-0739-01 | LABEL(SAT.RADIO/for PF3486BB) | 1 |
| 2-17 | 331-5342-00 | OUTLET HOLDER | 1 | | 290-0739-07 | LABEL(SAT.RADIO/for PF3746BA) | 1 |
| 2-18 | 331-4915-00 | OUTLET HOLDER | 1 | | | | |

EXPLODED VIEW/PARTS LIST



| NO. | PART NO. | DESCRIPTION | Q'TY | NO. | PART NO. | DESCRIPTION | Q'TY |
|-----|-------------|-----------------------------|------|-----|-------------|-----------------|------|
| A | HBS-668-100 | POWER-MOTOR-ASSY | 1 | 37 | 621-1867-20 | LS-HOLDER B | 1 |
| B | HBS-669-100 | SPINDLE-MOTOR-ASSY | 1 | 38 | 621-1868-23 | SHIFT LEVER | 1 |
| 1 | 969-0080-30 | PICKUP-ASSY | 1 | 39 | 621-1869-21 | RACK | 1 |
| 2 | ----- | MAIN-PWB-ASSY(5220AH-97) | 1 | 40 | 621-1870-21 | STOPPER LINK | 1 |
| 3 | ----- | SENSOR-PWB-ASSY(5100BH-95) | 1 | 41 | 621-1871-22 | DISC STOPPER | 1 |
| 4 | ----- | DC-MOTOR(PWR)(154000-020) | 1 | 42 | 621-1872-21 | CLAMPER RING | 1 |
| 5 | ----- | DC-MOTOR(SPN)(154100-020) | 1 | 43 | 621-1873-21 | LS-RACK | 1 |
| 6 | 620-1910-21 | LOWER CHASSIS | 1 | 44 | 621-1726-21 | ROLLER SLEEVE | 2 |
| 7 | 620-1911-20 | DRIVE PLATE | 1 | 45 | 622-1885-20 | ROLLER SHAFT | 1 |
| 8 | 620-1912-21 | ID-LOCK PLATE | 1 | 46 | 622-1886-20 | DAMPER PIN | 3 |
| 9 | 620-1913-20 | SPRING PLATE | 1 | 47 | 624-3062-20 | LEAD SCREW | 1 |
| 10 | 620-1914-21 | CLAMPER ARM | 1 | 48 | 629-0138-21 | DAMPER F | 2 |
| 11 | 620-1915-22 | CLAMPER PLATE | 1 | 49 | 629-0139-21 | DAMPER R | 1 |
| 12 | 620-1916-22 | SENSOR ARM | 1 | 50 | 714-2003-8B | MACHIN SCREW | 2 |
| 13 | 620-1928-20 | UPPER CHASSIS | 1 | 51 | 716-3718-00 | SPECIAL SCREW | 2 |
| 14 | 620-1918-21 | LS-RACK PLATE | 1 | 52 | 716-3719-00 | SPECIAL SCREW | 4 |
| 15 | 621-1845-22 | UPPER GUIDE | 1 | 53 | 716-3720-00 | SPECIAL SCREW | 2 |
| 16 | 621-1846-22 | ROLLER GUIDE | 1 | 54 | 716-3721-00 | SPECIAL SCREW | 1 |
| 17 | 621-1847-20 | LOCK ARM L | 1 | 55 | 716-3722-00 | SPECIAL SCREW | 1 |
| 18 | 621-1848-22 | LOCK ARM R | 1 | 56 | 716-3723-02 | SPECIAL-SCREW | 1 |
| 19 | 621-1849-20 | LOADING ROLLER | 2 | 57 | 716-3724-00 | SPECIAL SCREW | 1 |
| 20 | 621-1850-22 | GEAR BOX | 1 | 58 | 750-7924-22 | ROLLER SPRING L | 1 |
| 21 | ----- | MOTOR GEAR(PWR)(185121-621) | 1 | 59 | 750-7925-21 | ROLLER SPRING R | 1 |
| 22 | 621-1852-20 | SECOND GEAR | 1 | 60 | 750-7926-20 | DR-SPRING F | 2 |
| 23 | 621-1853-20 | ROLLER GEAR A | 1 | 61 | 750-7927-20 | DR-SPRING C | 1 |
| 24 | 621-1854-20 | ROLLER GEAR B | 1 | 62 | 750-7928-20 | DR-SPRING RA | 1 |
| 25 | 621-1855-20 | ROLLER GEAR C | 1 | 63 | 750-7929-20 | DR-SPRING RB | 1 |
| 26 | 621-1856-20 | ROLLER GEAR D | 1 | 64 | 750-7930-20 | SHIFT SPRING | 1 |
| 27 | 621-1857-21 | ROLLER GEAR E | 1 | 65 | 750-7931-20 | RACK SPRING | 1 |
| 28 | 621-1858-20 | POWER GEAR A | 1 | 66 | 750-7932-20 | CLAMPER SPRING | 1 |
| 29 | 621-1859-20 | POWER GEAR B | 1 | 67 | 750-7933-20 | ID-LOCK SPRING | 1 |
| 30 | 621-1860-21 | IDLE CASE | 1 | 68 | 750-7934-20 | SENSOR SPRING | 1 |
| 31 | 621-1861-20 | IDLE GEAR A | 1 | 69 | 803-4906-60 | VINYL-COAT-WIRE | 1 |
| 32 | 621-1862-20 | IDLE GEAR B | 1 | 70 | 816-2590-00 | SPECIAL LEAD | 1 |
| 33 | ----- | TURN TABLE(SPN)(186320-621) | 1 | 71 | 816-2591-00 | SPECIAL LEAD | 1 |
| 34 | 621-1864-20 | THREAD GEAR A | 1 | 72 | 816-2592-00 | SPECIAL LEAD | 1 |
| 35 | 621-1865-20 | THREAD GEAR B | 1 | 73 | 816-2593-00 | SPECIAL LEAD | 1 |
| 36 | 621-1866-20 | LS-HOLDER A | 1 | 74 | 816-4070-50 | FLAT WIRE | 1 |

ELECTRICAL PARTS LIST

SENSOR PWB(B1) section

| REF No. | PART No. | DESCRIPTION | REF No. | PART No. | DESCRIPTION | REF No. | PART No. | DESCRIPTION |
|---------|-------------|---------------|---------|-------------|--------------|---------|-------------|------------------------|
| D1 | 001-7138-91 | SML-S13RT T86 | Q1 | 060-4025-90 | SML-H10TBT86 | PWB | 039-3732-20 | PWB(WITHOUT COMPONETS) |
| D2 | 001-7138-91 | SML-S13RT T86 | Q2 | 060-4025-90 | SML-H10TBT86 | | | |
| J1 | 074-2504-10 | OUTLET SOCKET | S2 | 013-7414-50 | SPVG220100 | | | |

MAIN PWB(B2) section 1/3

| REF No. | PART No. | DESCRIPTION | REF No. | PART No. | DESCRIPTION | REF No. | PART No. | DESCRIPTION |
|---------|-------------|-------------|---------|-------------|-----------------|---------|-------------|-------------------------|
| C1 | ----- | (N/A) | C32 | 168-1532-55 | 0.015uF K | R8 | 033-1231-15 | 1/16W 12k ohm J |
| C2 | ----- | (N/A) | C33 | 046-4732-78 | 0.047uF K B | R9 | 116-1001-15 | 1/4W 10 ohm |
| C3 | ----- | (N/A) | C34 | 046-3322-58 | 3300pF K B | R10 | 033-2731-15 | 1/16W 27k ohm J |
| C4 | ----- | (N/A) | C35 | 046-4732-78 | 0.047uF K B | R11 | 033-1541-15 | 1/16W 150k ohm J |
| C5 | 046-1042-78 | 0.1uF K B | C36 | 046-4712-58 | 470pF K B | R12 | 033-1031-15 | 1/16W 10k ohm J |
| C6 | 168-1052-78 | 16V 1uF K | C37 | 046-1042-78 | 0.1uF K B | R13 | 033-2211-15 | 1/16W 220 ohm J |
| C7 | 042-0560-85 | 6.3V 100uF | C38 | 046-1042-78 | 0.1uF K B | R14 | 033-2231-15 | 1/16W 22k ohm J |
| C8 | ----- | (N/A) | C39 | 046-1042-78 | 0.1uF K B | R15 | 033-4731-15 | 1/16W 47k ohm J |
| C9 | ----- | (N/A) | C40 | 046-1032-78 | 0.01uF K B | R16 | 033-3341-15 | 1/16W 330k ohm J |
| C10 | 168-1052-78 | 16V 1uF K | C41 | 046-1042-78 | 0.1uF K B | R17 | 033-0000-05 | 1/16W 0 ohm |
| C11 | 046-1042-78 | 0.1uF K B | C42 | 045-1007-50 | 10 +/-0.5pF CH | R18 | 033-4731-15 | 1/16W 47k ohm J |
| C12 | 165-1073-35 | 16V 100uF | C43 | 046-1042-78 | 0.1uF K B | R19 | 033-4731-15 | 1/16W 47k ohm J |
| C13 | 046-1042-78 | 0.1uF K B | C44 | 046-1042-78 | 0.1uF K B | R20 | 033-3301-15 | 1/16W 33 ohm J |
| C14 | ----- | (N/A) | C45 | 043-0570-90 | 16V 2.2uF K | R21 | 033-1011-15 | 1/16W 100 ohm J |
| C15 | 046-1042-78 | 0.1uF K B | C46 | 043-0570-90 | 16V 2.2uF K | R22 | 033-1011-15 | 1/16W 100 ohm J |
| C16 | 046-4722-58 | 4700pF K B | C47 | 045-1201-50 | 12pF J CH | R23 | 033-4731-15 | 1/16W 47k ohm J |
| C17 | 046-1042-78 | 0.1uF K B | C48 | 045-1201-50 | 12pF J CH | R24 | 033-1041-15 | 1/16W 100k ohm J |
| C18 | 046-2222-58 | 2200pF K B | D1 | 001-0367-91 | 1SS226 | R25 | 033-1051-15 | 1/16W 1M ohm J |
| C20 | 046-1042-78 | 0.1uF K B | IC1 | 051-6101-90 | BD8226EFV | R26 | 033-2221-15 | 1/16W 2.2k ohm J |
| C21 | 043-0552-90 | 6.3V 47uF M | IC2 | 051-6751-00 | TC94A93MFG-201 | R27 | 033-4731-15 | 1/16W 47k ohm J |
| C22 | 046-1042-78 | 0.1uF K B | J1 | 074-2215-65 | 15P | R28 | 033-2211-15 | 1/16W 22 ohm J |
| C23 | 046-1522-58 | 1500pF K B | J2 | 074-2504-10 | OUTLET SOCKET | R29 | 033-2211-15 | 1/16W 220 ohm J |
| C24 | 046-1042-78 | 0.1uF K B | Q1 | 190-1365-50 | 2SA1365 AF,AG | R30 | 033-2211-15 | 1/16W 220 ohm J |
| C25 | 046-1532-78 | 0.015uF K B | R1 | 033-2211-15 | 1/16W 220 ohm J | R91 | 033-1031-15 | 1/16W 10k ohm J |
| C26 | ----- | (N/A) | R2 | 033-0000-05 | 1/16W 0 ohm | R95 | ----- | (N/A) |
| C27 | 046-1032-78 | 0.01uF K B | R3 | 033-0000-05 | 1/16W 0 ohm | RN1 | 050-0140-52 | 1/32W 100 ohm x4J |
| C28 | 046-1042-78 | 0.1uF K B | R4 | 117-1821-15 | 1/8W 1.8k ohm | RN2 | 050-0140-67 | 1/32W 220 ohm x4J |
| C29 | 046-3332-78 | 0.033uF K B | R5 | 033-0000-05 | 1/16W 0 ohm | RN3 | 050-0140-57 | 1/32W 10k ohm x4J |
| C30 | 046-4712-58 | 470pF K B | R6 | 033-0000-05 | 1/16W 0 ohm | X1 | 061-3586-90 | DSX321G(F) 16.920MHz |
| C31 | 045-4701-50 | 47pF CH | R7 | 033-1831-15 | 1/16W 18k ohm J | | | |

MAIN PWB(B2) section 2/3

| REF No. | PART No. | DESCRIPTION | REF No. | PART No. | DESCRIPTION | REF No. | PART No. | DESCRIPTION |
|---------|-------------|----------------------|---------|-------------|------------------|---------|-------------|--------------------|
| C49 | 046-1042-78 | 0.1uF K B | R39 | 033-1031-15 | 1/16W 10k ohm J | R63 | ----- | (N/A) |
| C50 | 046-1042-78 | 0.1uF K B | R40 | 033-1031-15 | 1/16W 10k ohm J | R64 | 033-1041-15 | 1/16W 100k ohm J |
| C51 | 046-1042-78 | 0.1uF K B | R41 | 033-1011-15 | 1/16W 100 ohm J | R65 | 033-1041-15 | 1/16W 100k ohm J |
| C52 | 046-1042-78 | 0.1uF K B | R42 | 033-1041-15 | 1/16W 100k ohm J | R66 | 033-1041-15 | 1/16W 100k ohm J |
| C53 | 046-1042-78 | 0.1uF K B | R43 | 033-4731-15 | 1/16W 47k ohm J | R67 | 033-1041-15 | 1/16W 100k ohm J |
| C54 | 046-1042-78 | 0.1uF K B | R44 | 033-4731-15 | 1/16W 47k ohm J | R68 | 033-4721-15 | 1/16W 4.7k ohm J |
| C55 | 045-8097-50 | 8 +/-0.5pF CH | R45 | 033-4731-15 | 1/16W 47k ohm J | R69 | 033-1031-15 | 1/16W 10k ohm J |
| C56 | 046-1042-78 | 0.1uF K B | R46 | 033-1041-15 | 1/16W 100k ohm J | R70 | 033-4721-15 | 1/16W 4.7k ohm J |
| C57 | 046-1042-78 | 0.1uF K B | R47 | 033-1041-15 | 1/16W 100k ohm J | R71 | 033-1031-15 | 1/16W 10k ohm J |
| C58 | 045-8097-50 | 8 +/-0.5pF CH | R48 | 033-0000-05 | 1/16W 0 ohm | R92 | 033-1041-15 | 1/16W 100k ohm J |
| C59 | 046-1042-78 | 0.1uF K B | R49 | 033-1031-15 | 1/16W 10k ohm J | R93 | 033-1041-15 | 1/16W 100k ohm J |
| C60 | 046-1042-78 | 0.1uF K B | R50 | 033-2201-15 | 1/16W 22 ohm J | R94 | 033-1041-15 | 1/16W 100k ohm J |
| IC3 | 052-5079-20 | IC_TMPM321F10FG-7KP8 | R51 | 033-2201-15 | 1/16W 22 ohm J | RN4 | 050-0140-52 | 1/32W 100 ohm x4J |
| IC4 | ----- | (N/A) | R52 | 033-2201-15 | 1/16W 22 ohm J | RN5 | 050-0140-57 | 1/32W 10k ohm x4J |
| IC5 | 051-6934-90 | MFI341S2313 | R53 | 033-1011-15 | 1/16W 100 ohm J | RN6 | 050-0140-57 | 1/32W 10k ohm x4J |
| P1 | ----- | (N/A) | R54 | 033-1011-15 | 1/16W 100 ohm J | RN7 | 050-0140-60 | 1/32W 33k ohm x4J |
| R31 | 033-4721-15 | 1/16W 4.7k ohm J | R55 | 033-1011-15 | 1/16W 100 ohm J | RN8 | 050-0140-57 | 1/32W 10k ohm x4J |
| R32 | 033-4721-15 | 1/16W 4.7k ohm J | R56 | 033-0000-05 | 1/16W 0 ohm | RN9 | 050-0140-57 | 1/32W 10k ohm x4J |
| R33 | ----- | (N/A) | R57 | 033-1011-15 | 1/16W 100 ohm J | RN10 | 050-0140-63 | 1/32W 47k ohm x4J |
| R34 | 033-4731-15 | 1/16W 47k ohm J | R58 | 033-1011-15 | 1/16W 100 ohm J | RN11 | 050-0140-51 | 1/32W 22 ohm x4J |
| R35 | 033-4731-15 | 1/16W 47k ohm J | R59 | 033-1041-15 | 1/16W 100k ohm J | RN12 | 050-0140-57 | 1/32W 10k ohm x4J |
| R36 | 033-1031-15 | 1/16W 10k ohm J | R60 | 033-1041-15 | 1/16W 100k ohm J | RN13 | 050-0140-57 | 1/32W 10k ohm x4J |
| R37 | 033-1041-15 | 1/16W 100k ohm J | R61 | ----- | (N/A) | RN14 | 050-0140-64 | 1/32W 100k ohm x4J |
| | | | R62 | ----- | (N/A) | X2 | 061-3580-90 | 12MHz |

MAIN PWB(B2) section 3/3

| REF No. | PART No. | DESCRIPTION | REF No. | PART No. | DESCRIPTION | REF No. | PART No. | DESCRIPTION |
|---------|-------------|--------------------|---------|-------------|--------------------|---------|-------------|------------------|
| C61 | 168-1052-78 | 16V 1uF K | IC8 | 051-5417-90 | S-1009N271-M5T1 | R77 | 033-1031-15 | 1/16W 10k ohm J |
| C62 | 042-0560-85 | 6.3V 100uF | IC9 | 051-3392-90 | S-1323B15NB-N8ATFG | R78 | 033-1041-15 | 1/16W 100k ohm J |
| C66 | 168-1052-78 | 16V 1uF K | J3 | 074-2248-50 | 50P | R79 | 033-2221-15 | 1/16W 2.2k ohm J |
| C67 | 046-1042-78 | 0.1uF K B | J4 | 074-2262-60 | 10P | R80 | 032-0163-96 | 1/2W 27 ohm J |
| C68 | 043-0552-90 | 6.3V 47uF M | L1 | 010-3127-90 | 33 ohm/100MHz | R81 | 032-0163-96 | 1/2W 27 ohm J |
| C71 | 046-1042-78 | 0.1uF K B | L2 | 010-3127-90 | 33 ohm/100MHz | R82 | 033-1531-15 | 1/16W 15k ohm J |
| C72 | 046-1042-78 | 0.1uF K B | NF1 | 010-3608-90 | 90 ohm/100MHz | R83 | 033-1531-15 | 1/16W 15k ohm J |
| C73 | 168-1042-78 | 16V 0.1uF K | P2 | ----- | (N/A) | R84 | 033-3301-15 | 1/16W 33 ohm J |
| C74 | 043-0552-90 | 6.3V 47uF M | Q2 | 125-2027-92 | DTC124EUA | R85 | ----- | (N/A) |
| C75 | 046-6822-58 | 6800pF K B | Q3 | 191-1197-50 | 2SB1197K Q,R | R86 | ----- | (N/A) |
| C76 | 168-1042-78 | 16V 0.1uF K | Q4 | 125-2027-92 | DTC124EUA | R87 | 033-0000-05 | 1/16W 0 ohm |
| C77 | 046-1022-58 | 50V 1000pF | Q5 | 125-0021-92 | DTA124EUA | R88 | 033-0000-05 | 1/16W 0 ohm |
| C78 | 043-0552-90 | 6.3V 47uF M | R72 | 033-1021-15 | 1/16W 1k ohm J | R89 | 033-0000-05 | 1/16W 0 ohm |
| C79 | 043-0552-90 | 6.3V 47uF M | R73 | 033-1031-15 | 1/16W 10k ohm J | R90 | 033-0000-05 | 1/16W 0 ohm |
| ET1 | 073-0792-90 | TERMINAL | R74 | 033-1041-15 | 1/16W 100k ohm J | | | |
| IC7 | 051-3392-90 | S-1323B15NB-N8ATFG | R75 | 033-5611-15 | 1/16W 560 ohm J | | | |