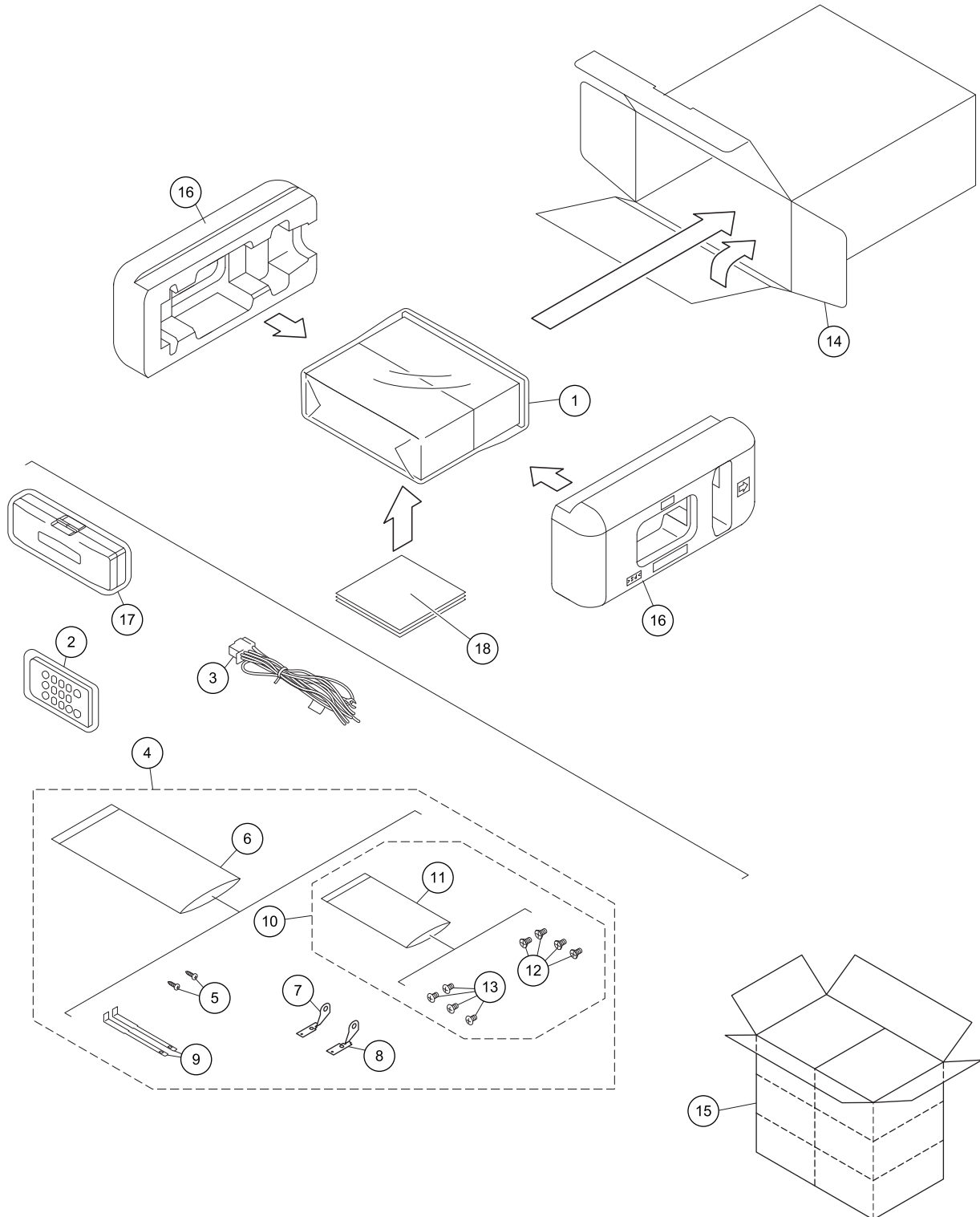


9. EXPLODED VIEWS AND PARTS LIST

- NOTES :
- Parts marked by "*" are generally unavailable because they are not in our Master Spare Parts List.
 - The \triangle mark found on some component parts indicates the importance of the safety factor of the part. Therefore, when replacing, be sure to use parts of identical designation.
 - Screw adjacent to ∇ mark on the product are used for disassembly.
 - For the applying amount of lubricants or glue, follow the instructions in this manual.
(In the case of no amount instructions, apply as you think it appropriate.)

9.1 PACKING



(1) PACKING SECTION PARTS LIST

<u>Mark No.</u>	<u>Description</u>	<u>Part No.</u>	<u>Mark No.</u>	<u>Description</u>	<u>Part No.</u>
1	Polyethylene Bag	See Contrast table (2)	* 11	Polyethylene Bag	CEG-127
2	Remote Control Unit	CXE3669	12	Screw	See Contrast table (2)
3	Cord Assy	QDP3013	13	Screw	TRZ50P080FTC
* 4	Accessory Assy	See Contrast table (2)	14	Unit Box	See Contrast table (2)
5	Screw	See Contrast table (2)	15	Contain Box	See Contrast table (2)
6	Polyethylene Bag	CEG1160	16	Protector	QHP3016
7	Holder	See Contrast table (2)	17	Case Assy	See Contrast table (2)
8	Holder	See Contrast table (2)	18-1	Owner's Manual	See Contrast table (2)
9	Handle	QNC3021	* 18-2	Warranty Card	See Contrast table (2)
10	Screw Assy	See Contrast table (2)	* 18-3	Service Network	See Contrast table (2)

(2) CONTRAST TABLE

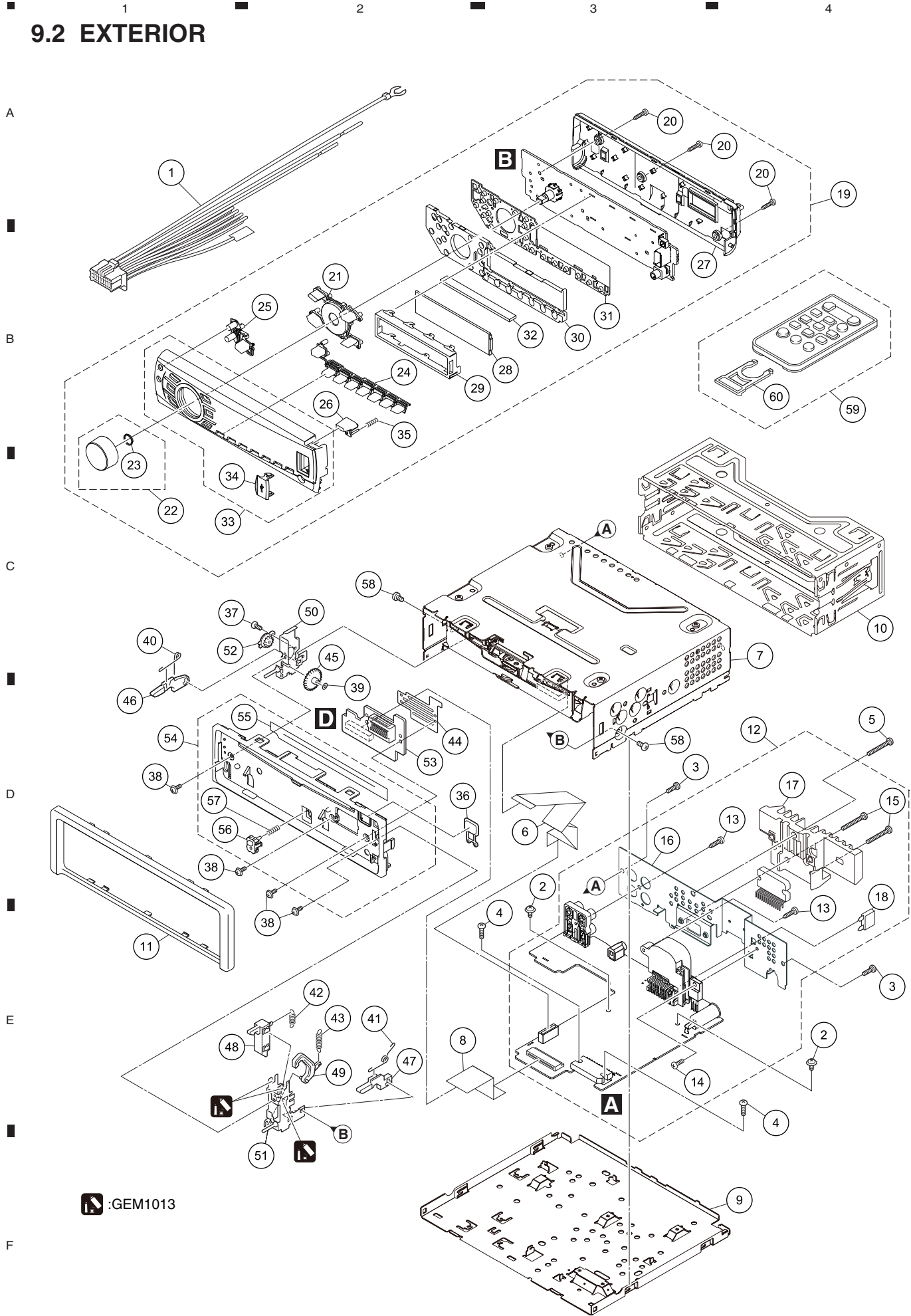
DEH-5300UB/XNUC, DEH-5350UB/XNES1 and DEH-5350UB/XNES are constructed the same except for the following:

Mark	No.	Description	DEH-5300UB/XNUC	DEH-5350UB/XNES1	DEH-5350UB/XNES
*	1	Polyethylene Bag	CEG1173	QEG3001	QEG3001
	4	Accessory Assy	QEA3012	QEA3009	QEA3009
	5	Screw	BPZ20P060FTC	Not used	Not used
	7	Holder	CND1249	Not used	Not used
	8	Holder	CND1250	Not used	Not used
	10	Screw Assy	YEA5072	YEA5082	YEA5082
	12	Screw	CRZ50P090FTC	Not used	Not used
	14	Unit Box	QHG3084	QHG3086	QHG3085
	15	Contain Box	QHL3084	QHL3086	QHL3085
	17	Case Assy	Not used	QXA3129	QXA3129
	18-1	Owner's Manual	QRD3066	QRD3067	QRD3067
*	18-2	Warranty Card	CRY1276	CRY1250	Not used
*	18-3	Service Network	Not used	CRY1251	Not used

Owner's Manual, Installation Manual

Part No.	Language
QRD3066	English, French, Spanish(Espanol)
QRD3067	English, Spanish(Espanol), Portuguese(B), Traditional Chinese, Arabic, Persian

9.2 EXTERIOR



DEH-5300UB/XNUC

(1) EXTERIOR SECTION PARTS LIST

<u>Mark No.</u>	<u>Description</u>	<u>Part No.</u>	<u>Mark No.</u>	<u>Description</u>	<u>Part No.</u>
1	Cord Assy	QDP3013	31	Rubber	QNV3028
2	Screw	ASZ26P050FTC	32	Connector	YNV5192
3	Screw	BSZ26P060FTC	33	Grille Unit	See Contrast table (2)
4	Screw	BSZ26P080FTC	34	Door(USB)	CAT2921
5	Screw	BSZ26P120FTC	35	Spring	XBH7001
6	Cable	CDE9337	36	Button(EJECT)	CAC7752
7	CD Mechanism Module(S11.1)	CXK5802	37	Screw(M2 x 4)	CBA1649
8	Cable	QDE3014	38	Screw(M2 x 4.5)	CBA1925
9	Case	QNB3001	39	Washer	CBF1038
10	Holder	QNC3020	40	Spring	CBH2650
11	Panel	QNS3156	41	Spring	CBH2651
12	Tuner Amp Unit	See Contrast table (2)	42	Spring	CBH2652
13	Screw	BPZ26P080FTC	43	Spring	CBH2653
14	Screw	BSZ26P060FTC	44	Holder	CND1254
15	Screw	BSZ26P120FTC	45	Gear	CNV5997
16	Holder	CND5848	46	Arm	CNV7400
17	Heat Sink	QNR3002	47	Arm	CNV7401
18	Fuse(10 A)	YEK5001	48	Arm	CNV7402
19	Detach Grille Assy	See Contrast table (2)	49	Arm	CNV7403
20	Screw	BPZ20P100FTC	50	Holder Unit	CXB9501
21	Button(LIST, RPT, UP, DOWN)	CAI3204	51	Holder Unit	CXB9502
22	Knob Unit	See Contrast table (2)	52	Damper Unit	CXB9503
23	Spring	YBL5010	53	Panel Unit	QWM3209
24	Button(RIGHT, -, 1-6)	QAC3052	54	Sub Panel Assy	QXA3330
25	Button(SRC, BAND, LEFT)	QAC3055	55	Cover	CNN2528
26	Button(DETACH)	QAC3056	56	Button	YAC5395
27	Cover	QNS3154	57	Spring	YBH5013
28	LCD(V1801)	CAW1998	58	Screw	BMZ30P040FTC
29	Holder	QNC3023	59	Remote Control Unit	CXE3669
30	Lighting Conductor	QNV3027	60	Cover	CNS7068

(2) CONTRAST TABLE

DEH-5300UB/XNUC, DEH-5350UB/XNES1 and DEH-5350UB/XNES are constructed the same except for the following:

Mark	No.	Description	DEH-5300UB/XNUC	DEH-5350UB/XNES1	DEH-5350UB/XNES
	12	Tuner Amp Unit	QWM3183	QWM3184	QWM3184
	19	Detach Grille Assy	QXA3266	QXA3267	QXA3267
	22	Knob Unit	CXE3692	QXA3153	QXA3153
	33	Grille Unit	QXA3270	QXA3271	QXA3271

9.3 CD MECHANISM MODULE

1

2

3

4

A

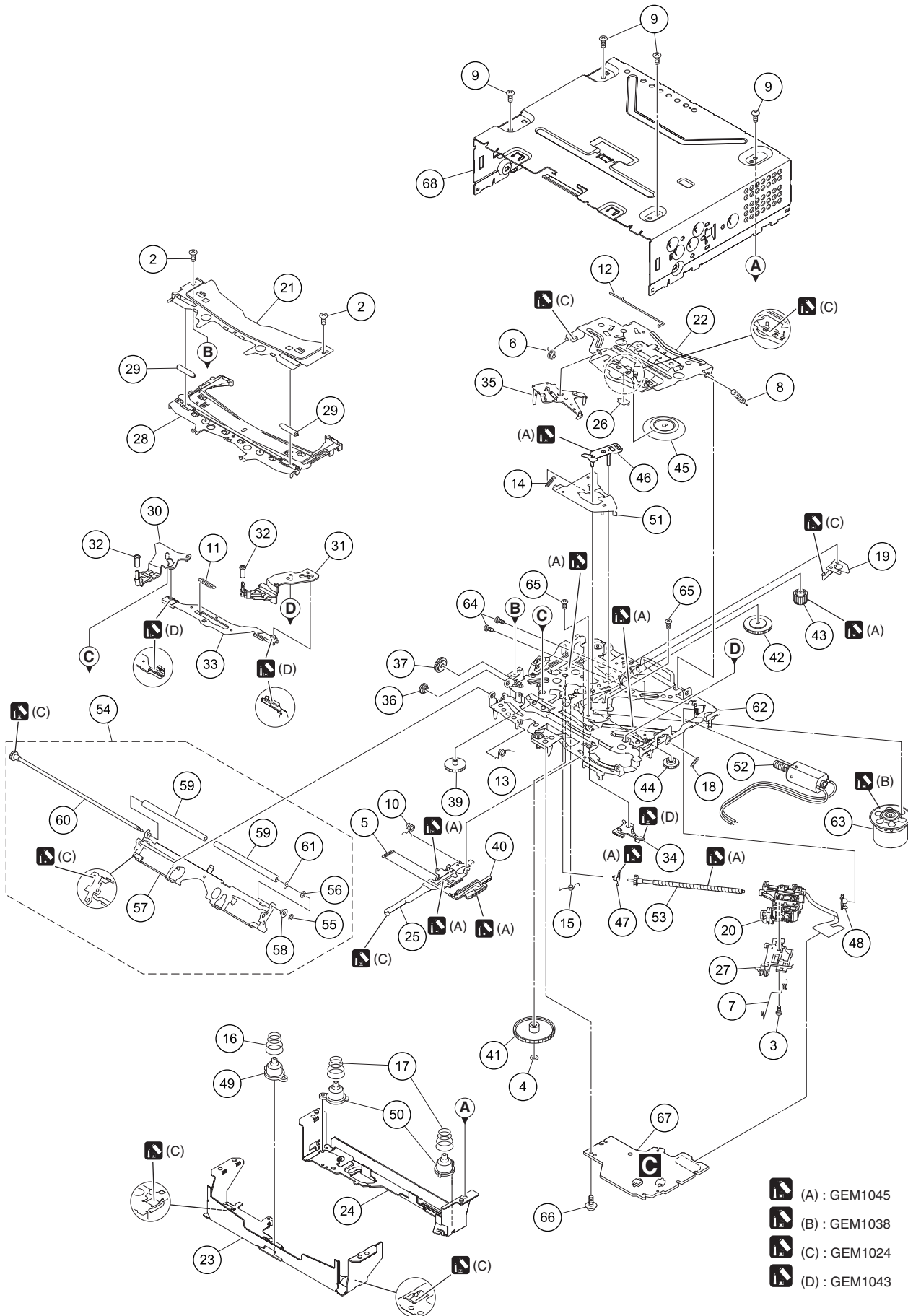
B





C

D

E

F



-  (A) : GEM1045
-  (B) : GEM1038
-  (C) : GEM1024
-  (D) : GEM1043

1

2

3

4

CD MECHANISM MODULE SECTION PARTS LIST

<u>Mark No.</u>	<u>Description</u>	<u>Part No.</u>	<u>Mark No.</u>	<u>Description</u>	<u>Part No.</u>
1		50	Damper	CNW1198
2	Screw	BSZ20P040FTC	51	Arm	CNW1726
3	Screw(M2 x 4)	CBA1835	52	Motor Unit(M2)(LOAD/CRG)	CXC4026
4	Washer	CBF1038	53	Screw Unit	CXC8894
5	Spring	CBH3010	54	Arm Assy	CXE3849
6	Spring	CBH2855	55	Washer	CBF1037
7	Spring	CBH2856	56	Washer	CBF1038
8	Spring	CBH2860	57	Arm	CND5886
9	Screw	BSZ26P060FTC	58	Collar	CNV6906
10	Spring	CBH3011	59	Roller	CNW1196
11	Spring	CBH3012	60	Gear Unit	CXC8893
12	Spring	CBH3014	61	Washer	YE15FTC
13	Spring	CBH3015	62	Chassis Unit	CXE3818
14	Spring	CBH3016	63	Motor Unit(M1)(SPDL)	CXE2273
15	Spring	CBH3017	64	Screw	JFZ20P025FTC
16	Spring	CBH3086	65	Screw	JGZ17P022FTC
17	Spring	CBH3019	66	Screw	EBA1028
18		67	CD Core Unit (S11.1STD-DOU)	CWX3985
19	Spring	CBL1822	68	Chassis	CNA3181
20	Pickup Unit(S10.5)(Service)	CXX1942			
21	Bracket	CND4553			
22	Arm	CND4555			
23	Bracket	CND5709			
24	Bracket	CND5710			
25	Lever	CND5398			
26	Sheet	CNN2280			
27	Rack	CNV8342			
28	Guide	CNW1171			
29	Roller	CNW1172			
30	Arm	CNW2157			
31	Arm	CNW1174			
32	Roller	CNW1175			
33	Lever	CNW1176			
34	Arm	CNW1177			
35	Arm	CNW1178			
36	Gear	CNW1180			
37	Gear	CNW1181			
38				
39	Gear	CNW1183			
40	Rack	CNW1184			
41	Gear	CNW1185			
42	Gear	CNW1186			
43	Gear	CNW1187			
44	Gear	CNW1188			
45	Clamper	CNW1190			
46	Arm	CNW1192			
47	Holder	CNW1193			
48	Holder	CNW1194			
49	Damper	CNW1197			

12. ELECTRICAL PARTS LIST

NOTE:

- Parts whose parts numbers are omitted are subject to being not supplied.
- The part numbers shown below indicate chip components.

Chip Resistor

RS1/OS○○○○J,RS1/○○S○○○○J

Chip Capacitor (except for CQS.....)

CKS....., CCS....., CSZS.....

- The \triangle mark found on some component parts indicates the importance of the safety factor of the part. Therefore, when replacing, be sure to use parts of identical designation.
- Meaning of the figures and others in the parentheses in the parts list.

Example) IC 301 is on the point (face A, 91 of x-axis, and 111 of y-axis) of the corresponding PC board.

IC 301 (A, 91, 111) IC NJM2068V

<u>Circuit Symbol and No.</u>	<u>Part No.</u>	<u>Circuit Symbol and No.</u>	<u>Part No.</u>
A:DEH-5300UB/XNUC		Q 251 (A,23,131) Chip Transistor	RN1910
B:DEH-5350UB/XNES1		Q 252 (A,13,129) Chip Transistor	RN1910
C:DEH-5350UB/XNES		Q 351 (A,88,127) Chip Transistor	RN4983
Unit Number : QWM3183(A)		Q 551 (A,126,92) Transistor	LSA1576UB
: QWM3184(B,C)		Q 751 (A,142,139) Transistor	2SD2396
Unit Name : Tuner Amp Unit		Q 752 (A,137,132) Chip Transistor	RN4983
Unit Number :		Q 872 (A,146,52) Transistor	LTC114EUB
Unit Name : Keyboard Unit		Q 873 (A,147,58) Transistor	LSA1576UB
Unit Number : CWX3985		Q 891 (A,146,63) Transistor	LSA1576UB
Unit Name : CD Core Unit(\$11.1STD-DOUT)		Q 892 (A,149,63) Transistor	LTC114EUB
Unit Number : QWM3209		Q 931 (A,118,105) Transistor	LSC4081UB
Unit Name : Panel Unit		D 301 (A,100,127) Diode	CRG03
		D 302 (A,97,127) Diode	CRG03
		D 401 (A,158,106) Diode	KP2311E
		D 402 (A,158,100) Diode	KP2311E
		D 501 (A,29,110) Diode	RB160L-40
		D 502 (A,22,125) Diode	CRG03
		D 601 (A,114,84) Diode	RB551V-30
		D 602 (A,124,51) Diode	RB751S-40
		D 751 (A,141,131) Diode	RKZ8.2KG(B2)
		D 801 (A,114,21) Diode	DZ2S068C
		D 802 (A,116,21) Diode	DZ2S068C
		D 803 (A,117,24) Diode	DZ2S068C
		D 804 (A,120,21) Diode	DZ2S068C
		D 805 (A,119,25) Diode	DZ2S068C
		D 806 (A,112,21) Diode	DZ2S068C
		D 807 (A,111,21) Diode	DZ2S068C
		D 809 (A,99,20) Diode	DZ2S068C
		D 810 (A,109,21) Diode	DZ2S068C
		D 901 (A,139,120) Diode	1SR154-400
		D 902 (A,136,120) Diode	1SR154-400
		D 911 (A,156,65) Diode	1SR154-400
		D 912 (A,160,65) Diode	1SR154-400
		D 931 (A,116,108) Diode	HZU7L(A1)
		L 401 (A,159,103) Chip Coil	LCTAWR15J2520
		L 402 (A,151,101) Inductor	CTF1786
		L 403 (A,146,103) Inductor	CTF1786
		L 404 (A,155,104) Chip Coil	LCTAWR27J2520
		L 405 (A,142,104) Inductor	CTF1389
		L 406 (A,139,101) Inductor	LCTAW220J2520
		L 407 (A,162,96) Inductor	CTF1786

A

Unit Number : QWM3183(A)
: QWM3184(B,C)
Unit Name : Tuner Amp Unit

MISCELLANEOUS

IC 201 (A,98,112) IC	PML022A	D 810 (A,109,21) Diode	DZ2S068C
IC 231 (A,137,60) D/A Converter	PCM1753DBQ	D 901 (A,139,120) Diode	1SR154-400
IC 301 (A,78,142) IC	PAL007E	D 902 (A,136,120) Diode	1SR154-400
IC 401 (A,150,91) IC	TDA7706	D 911 (A,156,65) Diode	1SR154-400
IC 501 (A,41,122) IC	BD2226G	D 912 (A,160,65) Diode	1SR154-400
IC 502 (A,20,114) IC	BD9008F	D 931 (A,116,108) Diode	HZU7L(A1)
IC 551 (A,120,90) IC	341S2162	L 401 (A,159,103) Chip Coil	LCTAWR15J2520
IC 601 (A,113,67) IC	R5S7266ZD144FP	L 402 (A,151,101) Inductor	CTF1786
IC 651 (A,92,63) IC	S-80827CNMC-B8M	L 403 (A,146,103) Inductor	CTF1786
IC 671 (A,129,82) Flash ROM Unit(A)	PEA012A8	L 404 (A,155,104) Chip Coil	LCTAWR27J2520
Flash ROM Unit(B,C)	PEA011A8	L 405 (A,142,104) Inductor	CTF1389
IC 801 (A,108,25) L-MOS And Gate	TC7SET08FUS1	L 406 (A,139,101) Inductor	LCTAW220J2520
IC 912 (A,145,28) IC	BA49182-V12	L 407 (A,162,96) Inductor	CTF1786

1

2

3

4

Circuit Symbol and No.**Part No.****Circuit Symbol and No.****Part No.**

L 408	(A,162,94)	Inductor	CTF1786
L 409	(A,138,94)	Chip Coil	LCTAW470J2520
L 415	(A,146,81)	Inductor	CTF1786
L 420	(A,145,107)	Inductor(A)	LCYB68NJ1608
L 501	(A,34,110)	Coil	CTH1475
L 671	(A,133,78)	Inductor	CTF1786
L 802	(A,114,26)	Inductor	CTF1713
L 901	(A,112,141)	Choke Coil 600 uH	CTH1432
X 401	(A,161,87)	Oscillator 36.48 MHz	CSS1805
X 601	(A,129,61)	Ceramic Resonator 16.934 MHz	CSS1603
X 602	(A,109,51)	Oscillator 12.000 MHz	YSS5005
S 691	(A,90,14)	Switch(DSENS)	CSN1039
⚠ P251	(A,7,129)	Fuse 3 A	CEK1286
P 401	(A,155,109)	Surge Protector	IMSA-6802-01Y900
CN701	(A,91,39)	Connector	VKN1192
CN802	(A,110,15)	Connector	CKS3836
JA251	(A,19,138)	Pin Jack	CKB1099
JA401	(A,158,129)	Antenna Jack	YKS5041
JA901	(A,113,141)	Plug	CKM1586
JA961	(A,42,139)	Connector	CKS4124
⚠	Fuse(10 A)		YEK5001

R 508	(A,95,67)	RS1/16SS103J
R 551	(A,121,95)	RS1/16SS473J
R 552	(A,117,85)	RS1/16SS103J
R 553	(A,118,85)	RS1/16SS103J
R 556	(A,122,85)	RS1/16SS272J
R 557	(A,120,85)	RS1/16SS472J
R 558	(A,125,89)	RS1/16SS472J
R 559	(A,116,85)	RS1/16SS101J
R 560	(A,119,85)	RS1/16SS101J
R 601	(A,112,85)	RS1/16SS103J
R 602	(A,109,82)	RS1/16SS473J
R 603	(A,111,85)	RS1/16SS104J
R 604	(A,98,81)	RAB4CQ473J
R 606	(A,100,78)	RS1/16SS473J
R 607	(A,100,73)	RS1/16SS473J
R 608	(A,97,73)	RS1/16SS473J
R 609	(A,127,69)	RS1/16SS101J
R 610	(A,100,67)	RS1/16SS222J
R 611	(A,132,69)	RS1/16SS101J
R 612	(A,98,79)	RS1/16SS473J

RESISTORS

R 201	(A,96,63)	RAB4CQ102J
R 231	(A,142,60)	RS1/16SS821J
R 232	(A,143,60)	RS1/16SS821J
R 251	(A,19,131)	RS1/16SS821J
R 252	(A,29,131)	RS1/16SS821J
R 253	(A,9,129)	RS1/16SS821J
R 254	(A,18,130)	RS1/16SS821J
R 255	(A,21,131)	RS1/16SS223J
R 256	(A,26,131)	RS1/16SS223J
R 257	(A,11,129)	RS1/16SS223J
R 258	(A,15,130)	RS1/16SS223J
R 303	(A,86,123)	RS1/16SS103J
R 304	(A,86,125)	RS1/16SS473J
R 351	(A,92,127)	RS1/16SS103J
R 352	(A,90,128)	RS1/16SS103J
R 353	(A,92,128)	RS1/16SS221J
R 401	(A,161,106)	RS1/16SS221J
R 402	(A,161,100)	RS1/16SS751J
R 403	(A,139,103)	RS1/16SS152J
R 405	(A,142,99)	RS1/16SS105J
R 406	(A,138,97)	RS1/16SS471J
R 407	(A,139,96)	RS1/16SS330J
R 408	(A,138,92)	RS1/16SS681J
R 410	(A,136,80)	RS1/4SA8R2J
R 412	(A,137,85)	RS1/4SA8R2J
R 413	(A,145,108)	RS1/16SS105J
R 419	(A,132,72)	RS1/16SS103J
R 420	(A,133,72)	RS1/16SS103J
R 421	(A,153,80)	RS1/16SS0R0J
R 427	(A,142,84)	RS1/16SS102J
R 428	(A,139,87)	RS1/16SS0R0J
R 501	(A,22,120)	RS1/10SR471J
R 502	(A,23,117)	RS1/16SS4702F
R 503	(A,21,117)	RS1/16SS682J
R 504	(A,20,120)	RS1/16SS1002F
R 505	(A,26,113)	RS1/16SS183J
R 506	(A,15,114)	RS1/16SS513J

R 613	(A,132,68)	RS1/16SS101J
R 615	(A,98,64)	RS1/16SS104J
R 617	(A,127,65)	RS1/16SS221J
R 619	(A,130,57)	RAB4CQ473J
R 620	(A,99,60)	RS1/16SS473J
R 621	(A,125,54)	RS1/16SS473J
R 622	(A,103,50)	RS1/16SS473J
R 623	(A,108,54)	RS1/16SS152J
R 624	(A,103,52)	RS1/16SS473J
R 626	(A,116,53)	RS1/16SS5601F
R 628	(A,123,53)	RS1/16SS103J
R 629	(A,97,58)	RS1/16SS102J
R 630	(A,122,49) (B,C)	RS1/16SS473J
R 631	(A,121,53) (A)	RS1/16SS473J
	(B,C)	RS1/16SS153J
R 632	(A,117,47)	RS1/16SS103J
R 633	(A,119,45)	RS1/16SS101J
R 636	(A,103,53)	RS1/16SS473J
R 651	(A,91,60)	RS1/16SS104J
R 671	(A,133,83)	RS1/10SR473J
R 672	(A,129,88)	RS1/10SR473J
R 691	(A,92,22)	RS1/10SR222J
R 701	(A,95,45)	RS1/16SS473J
R 702	(A,95,39)	RS1/16SS104J
R 703	(A,97,41)	RS1/16SS104J
R 704	(A,96,49)	RAB4CQ472J
R 707	(A,95,46)	RS1/16SS221J
R 708	(A,95,44)	RS1/16SS221J
R 709	(A,95,43)	RS1/16SS101J
R 710	(A,95,42)	RS1/16SS221J
R 711	(A,95,41)	RS1/16SS101J
R 712	(A,95,40)	RS1/16SS102J
R 713	(A,96,37)	RS1/16SS151J
R 714	(A,96,36)	RS1/16SS151J
R 715	(A,96,35)	RS1/16SS151J
R 716	(A,95,31)	RS1/16SS221J
R 717	(A,95,32)	RS1/16SS104J
R 751	(A,95,47)	RS1/16SS473J
R 752	(A,97,47)	RS1/16SS103J
R 753	(A,139,134)	RS1/10SR821J

1

2

3

4

1

2

3

4

Circuit Symbol and No.Part No.Circuit Symbol and No.Part No.

C 447	(A,142,86)	CKSSYB102K50	C 901	(A,133,125) 3 300 uF/16 V	CCH1732
C 451	(A,142,103) (A)	CCSSCJ3R0C50	C 913	(A,140,40)	CKSSYB102K50
A C 452	(A,134,91) (A)	CKSSYB102K50	C 914	(A,141,44) 4.7 uF	CCG1201
C 455	(A,137,89) (A)	CCSSCH100D50	C 916	(A,150,43) 4.7 uF	CCG1201
C 501	(A,38,122)	CKSRYB105K10	C 917	(A,138,41) 4.7 uF	CCG1201
C 503	(A,32,120)	CEVQW221M6R3	C 918	(A,153,42) 4.7 uF	CCG1201
C 504	(A,44,123)	CKSRYB105K10	C 919	(A,145,40)	CKSSYB102K50
C 505	(A,12,121)	CEJQ221M16	C 920	(A,147,42) 4.7 uF	CCG1201
C 506	(A,27,113)	CKSSYB153K16	C 921	(A,133,40)	CKSRYB104K16
C 508	(A,25,114)	CCSSCH220J50	C 922	(A,155,52)	CEAT102M16(P30)
C 509	(A,24,110)	CKSRYB105K16	C 923	(A,154,40)	CKSSYB102K50
C 551	(A,122,95)	CKSSYB104K10	C 926	(A,133,41)	CKSRYB102K50
C 552	(A,121,86)	CKSSYB104K10	C 931	(A,114,105)	CKSRYB104K16
C 601	(A,116,80)	CKSSYB104K10	C 961	(A,48,138)	CKSSYB104K16
C 602	(A,113,80)	CKSSYB104K10	C 962	(A,50,138)	CKSSYB104K16
C 603	(A,109,80)	CKSSYB104K10			
C 604	(A,99,76)	CKSSYB104K10			
C 605	(A,126,74)	CKSSYB104K10			
C 606	(A,100,75)	CKSSYB104K10			
C 607	(A,128,73)	CKSSYB104K10			
C 608	(A,100,71)	CKSSYB104K10			
C 609	(A,127,70)	CKSSYB104K10			
C 610	(A,100,69)	CKSSYB104K10			
C 612	(A,130,69)	CKSSYB104K10			
C 616	(A,100,64)	CKSSYB104K10			
C 617	(A,129,65)	CCSSCH100D50			
C 618	(A,99,63)	CKSSYB104K10			
C 619	(A,127,64)	CKSSYB104K10			
C 620	(A,132,61)	CKSSYB104K10			
C 621	(A,100,60)	CKSSYB104K10			
C 622	(A,124,53)	CKSSYB104K10			
C 623	(A,119,53)	CKSSYB104K10			
C 624	(A,118,52)	CKSSYB104K10			
C 625	(A,117,53)	CKSSYB104K10			
C 626	(A,115,53)	CKSSYB104K10			
D C 627	(A,113,52)	CKSSYB104K10			
C 628	(A,109,54)	CKSSYB104K10			
C 629	(A,104,54)	CKSSYB104K10			
C 630	(A,123,54)	CKSSYB104K10			
C 632	(A,110,49)	CCSSCH120J50			
C 633	(A,108,49)	CCSSCH120J50			
C 638	(A,117,45)	CKSRYB105K10			
C 651	(A,95,60)	CKSRYB105K10			
C 671	(A,133,81)	CKSSYB104K10			
C 701	(A,98,41)	CKSSYB103K16			
C 707	(A,88,30)	CKSSYB102K50			
E C 708	(A,87,32)	CKSRYB105K10			
C 751	(A,142,127) 10 uF	CCG1192			
C 754	(A,140,130)	CKSSYB104K10			
C 805	(A,123,21)	CKSRYB104K16			
C 806	(A,125,19)	CKSRYB104K16			
C 807	(A,106,21)	CKSRYB104K16			
C 808	(A,94,24)	CKSRYB104K16			
C 809	(A,122,21)	CKSRYB104K16			
C 810	(A,103,21)	CCSRCH221J50			
C 811	(A,101,21)	CCSRCH221J50			
F C 812	(A,120,26)	CKSRYB105K16			
C 817	(A,110,28)	CKSSYB104K10			
C 820	(A,105,21)	CCSRCH221J50			
C 871	(A,124,26)	CKSRYB104K16			
			IC 1801	(B,93,26) IC	PD6340A
			IC 1806	(A,157,38) Remote IC	GP1UXC14RK
			Q 1896	(B,98,12) Chip Transistor	HN1C01FU
			D 1861	(A,69,27) White LED	SMLXA4WBETW1(Z1)
			D 1862	(A,21,16) LED(RED)	SML-D12V8W(PQ)
			D 1863	(A,55,13) LED(RED)	SML-D12V8W(PQ)
			D 1864	(A,54,34) LED(RED)	SML-D12V8W(PQ)
			D 1865	(A,24,37) LED(RED)	SML-D12V8W(PQ)
			D 1866	(A,73,10) LED(RED)	SML-D12V8W(PQ)
			D 1867	(A,60,25) LED(RED)	SML-D12V8W(PQ)
			D 1868	(A,18,26) LED(RED)	SML-D12V8W(PQ)
			D 1869	(A,109,11) LED(RED)	SML-D12V8W(PQ)
			D 1870	(A,97,11) LED(RED)	SML-D12V8W(PQ)
			D 1871	(A,85,10) LED(RED)	SML-D12V8W(PQ)
			D 1872	(A,145,13) LED(RED)	SML-D12V8W(PQ)
			D 1873	(A,133,12) LED(RED)	SML-D12V8W(PQ)
			D 1874	(A,121,12) LED(RED)	SML-D12V8W(PQ)
			D 1875	(A,7,28) LED(RED)	SML-D12V8W(PQ)
			D 1876	(A,6,38) LED(RED)	SML-D12V8W(PQ)
			D 1877	(A,22,15) LED	SML-D12P8W(KL)
			D 1878	(A,56,13) LED	SML-D12P8W(KL)
			D 1879	(A,56,34) LED	SML-D12P8W(KL)
			D 1880	(A,25,37) LED	SML-D12P8W(KL)
			D 1881	(A,72,10) LED	SML-D12P8W(KL)
			D 1882	(A,60,23) LED	SML-D12P8W(KL)
			D 1883	(A,19,25) LED	SML-D12P8W(KL)
			D 1884	(A,108,11) LED	SML-D12P8W(KL)
			D 1885	(A,96,11) LED	SML-D12P8W(KL)
			D 1886	(A,84,10) LED	SML-D12P8W(KL)
			D 1887	(A,144,13) LED	SML-D12P8W(KL)
			D 1888	(A,132,12) LED	SML-D12P8W(KL)
			D 1889	(A,120,12) LED	SML-D12P8W(KL)
			D 1890	(A,7,27) LED	SML-D12P8W(KL)
			D 1891	(A,6,39) LED	SML-D12P8W(KL)
			X 1801	(B,82,26) Ceramic Resonator 5.00 MHz	CSS1547
			S 1846	(A,39,23) Encoder(MULTI-CONTROL)	CSD1168
			CN1851	(B,132,26) Connector	CKS6038
			CN1856	(A,156,25) Connector	CKS6267

B**Unit Number :****Unit Name : Keyboard Unit**MISCELLANEOUS

1

2

3

4

5		6	
<u>Circuit Symbol and No.</u>		<u>Part No.</u>	
JA 1836	(A,154,10) Jack	CKN1082	
V 1801	(A,144,36) LCD	CAW1998	

RESISTORS

R 1801	(B,77,25)	RS1/10SR222J
R 1802	(B,77,24)	RS1/10SR222J
R 1807	(B,148,35)	RS1/10SR101J
R 1811	(B,130,13)	RS1/10SR0R0J
R 1813	(B,40,37)	RS1/10SR0R0J
R 1836	(B,133,7)	RS1/10SR101J
R 1837	(B,139,16)	RS1/10SR101J
R 1847	(B,58,22)	RS1/10SR273J
R 1851	(B,95,15)	RS1/10SR104J
R 1856	(B,148,26)	RS1/10SR0R0J
R 1857	(B,148,29)	RS1/10SR0R0J
R 1861	(B,60,31)	RS1/4SA271J
R 1862	(B,33,35)	RS1/10SR182J
R 1863	(B,51,32)	RS1/10SR182J
R 1864	(B,86,12)	RS1/10SR222J
R 1865	(B,119,8)	RS1/10SR222J
R 1866	(B,120,11)	RS1/10SR222J
R 1867	(B,20,26)	RS1/10SR272J
R 1874	(B,28,34)	RS1/4SA821J
R 1875	(B,56,31)	RS1/4SA821J
R 1876	(B,87,7)	RS1/4SA681J
R 1877	(B,104,8)	RS1/4SA681J
R 1878	(B,124,13)	RS1/4SA681J
R 1879	(B,15,27)	RS1/4SA821J
R 1880	(B,62,31)	RS1/4SA271J
R 1897	(B,101,14)	RS1/10SR102J
R 1898	(B,103,13)	RS1/10SR103J
R 1899	(B,95,11)	RS1/10SR103J
R 1900	(B,98,14)	RS1/10SR102J

CAPACITORS

C 1801	(B,104,28)	CKSRYB105K10
C 1806	(B,148,37) 10 uF	CCG1192
C 1836	(B,144,15)	CKSRYB472K50
C 1837	(B,133,9)	CKSRYB472K50
C 1851	(B,95,14)	CKSRYB221K50



Unit Number : CWX3985
Unit Name : CD Core Unit(S11.1STD-DOUT)

MISCELLANEOUS

IC 201	(A,28,33) IC	PE5756A
IC 301	(A,64,27) IC	BA5839FP
Q 101	(B,8,56) Transistor	2SA1577
Q 102	(B,21,51) Chip Digital Transistor	LTA123JUB
X 201	(A,15,27) Ceramic Resonator 16.934 MHz	CSS1603
S 901	(A,42,53) Switch(HOME)	CSN1080
S 903	(B,21,12) Switch(DSCSNS)	CSN1081
CN101	(A,16,58) Connector	CKS4808
CN701	(A,37,10) Connector	CKS6146

RESISTORS

Circuit Symbol and No. Part No.

R 101	(B,6,59)	RS1/10SR2R4J
R 102	(B,7,59)	RS1/10SR2R4J
R 103	(B,8,59)	RS1/10SR2R7J
R 108	(B,19,53)	RS1/16SS105J
R 109	(B,11,52)	RS1/16SS222J
R 214	(A,38,41)	RS1/16SS103J
R 215	(A,38,40)	RS1/16SS393J
R 216	(A,30,44)	RS1/16SS122J
R 217	(A,33,46)	RS1/16SS562J
R 218	(A,30,46)	RS1/16SS472J
R 225	(A,33,23)	RS1/16SS0R0J
R 229	(A,31,44)	RS1/16SS471J
R 232	(A,19,21)	RS1/16SS0R0J
R 235	(A,45,32)	RS1/16SS103J
R 236	(A,46,32)	RS1/16SS103J
R 237	(B,24,25)	RS1/16SS221J
R 240	(B,26,30)	RS1/16SS473J
R 245	(B,28,30)	RS1/16SS104J
R 254	(B,29,30)	RS1/16SS104J
R 260	(B,41,21)	RS1/16SS103J
R 262	(A,44,32)	RS1/16SS472J
R 263	(A,47,32)	RS1/16SS472J
R 264	(A,44,25)	RS1/16SS102J
R 281	(A,31,22)	RS1/16SS560J
R 282	(A,30,22)	RS1/16SS560J
R 283	(B,32,18)	RS1/16SS0R0J
R 291	(B,31,17)	RS1/16SS560J
R 292	(B,32,16)	RS1/16SS0R0J
R 293	(B,32,11)	RS1/16SS0R0J
R 294	(A,18,28)	RS1/16SS471J
R 296	(B,32,30)	RS1/16SS0R0J
R 299	(B,31,13)	RS1/16SS0R0J
R 305	(A,60,34)	RS1/16SS183J
R 306	(A,61,37)	RS1/16SS183J
R 307	(A,58,34)	RS1/16SS183J
R 308	(A,58,36)	RS1/16SS183J
R 701	(B,37,21)	RS1/16SS101J
R 702	(B,38,20)	RS1/16SS101J
R 706	(B,43,11)	RS1/16SS221J
R 708	(A,40,22)	RS1/16SS0R0J
R 709	(A,40,21)	RS1/16SS0R0J
R 722	(B,37,22)	RS1/16SS0R0J

CAPACITORS

C 104	(B,11,55)	CKSQYB475K6R3
C 203	(A,18,35)	CKSSYB104K10
C 209	(A,17,28)	CKSRYB104K16
C 210	(A,21,21)	CKSSYB104K10
C 211	(A,24,23)	CKSSYB104K10
C 212	(A,38,33)	CKSSYB104K10
C 213	(A,40,41)	CKSSYB332K50
C 214	(A,40,40)	CKSSYB473K10
C 215	(A,38,37)	CKSSYB104K10
C 216	(A,36,46)	CKSSYB182K50
C 217	(A,31,46)	CCSSCH560J50
C 218	(A,29,46)	CCSSCH4R0C50
C 219	(A,32,43)	CKSSYB104K10
C 220	(B,32,41)	CKSSYB104K10
C 221	(A,35,43)	CKSSYB104K10

1
Circuit Symbol and No.

2
Part No.

3

4

A	C 222	(A,29,43)	CKSSYB104K10
	C 223	(A,25,44)	CCSSCH680J50
	C 224	(A,23,44)	CCSSCH470J50
	C 225	(A,20,43)	CKSSYB103K16
	C 228	(A,32,46)	CCSSCH270J50
	C 229	(B,28,40)	CKSSYB104K10
	C 231	(B,44,28)	CKSSYB102K50
	C 232	(B,45,28)	CKSSYB102K50
	C 233	(B,25,25)	CKSSYB103K16
	C 236	(B,26,41)	CKSSYB104K10
	C 238	(A,15,35)	CKSRYB104K16
	C 299	(A,17,33)	CKSSYB104K10
	C 304	(A,60,35)	CKSSYB472K25
B	C 305	(A,58,35)	CKSSYB223K16
	C 306	(A,68,20)	CKSRYB105K10
	C 710	(B,43,10)	CKSSYB102K50

D

Unit Number: QWM3209

Unit Name : Panel Unit

MISCELLANEOUS

C	D 1	(A,3,17) LED(RED)	SML-D12V8W(PQ)
	D 2	(A,55,37) LED(RED)	SML-D12V8W(PQ)
	S 1	(A,59,37) Push Switch(EJECT)	CSG1155
	CN1	(A,38,24) Connector	CKS6037
	CN2	(B,16,9) Connector	CKS3863

Miscellaneous Parts List

M 1	Motor Unit(SPDL)	CXE2273
M 2	Motor Unit(LOAD/CRG)	CXC4026
D	Pickup Unit(S10.5)(Service)	CXX1942