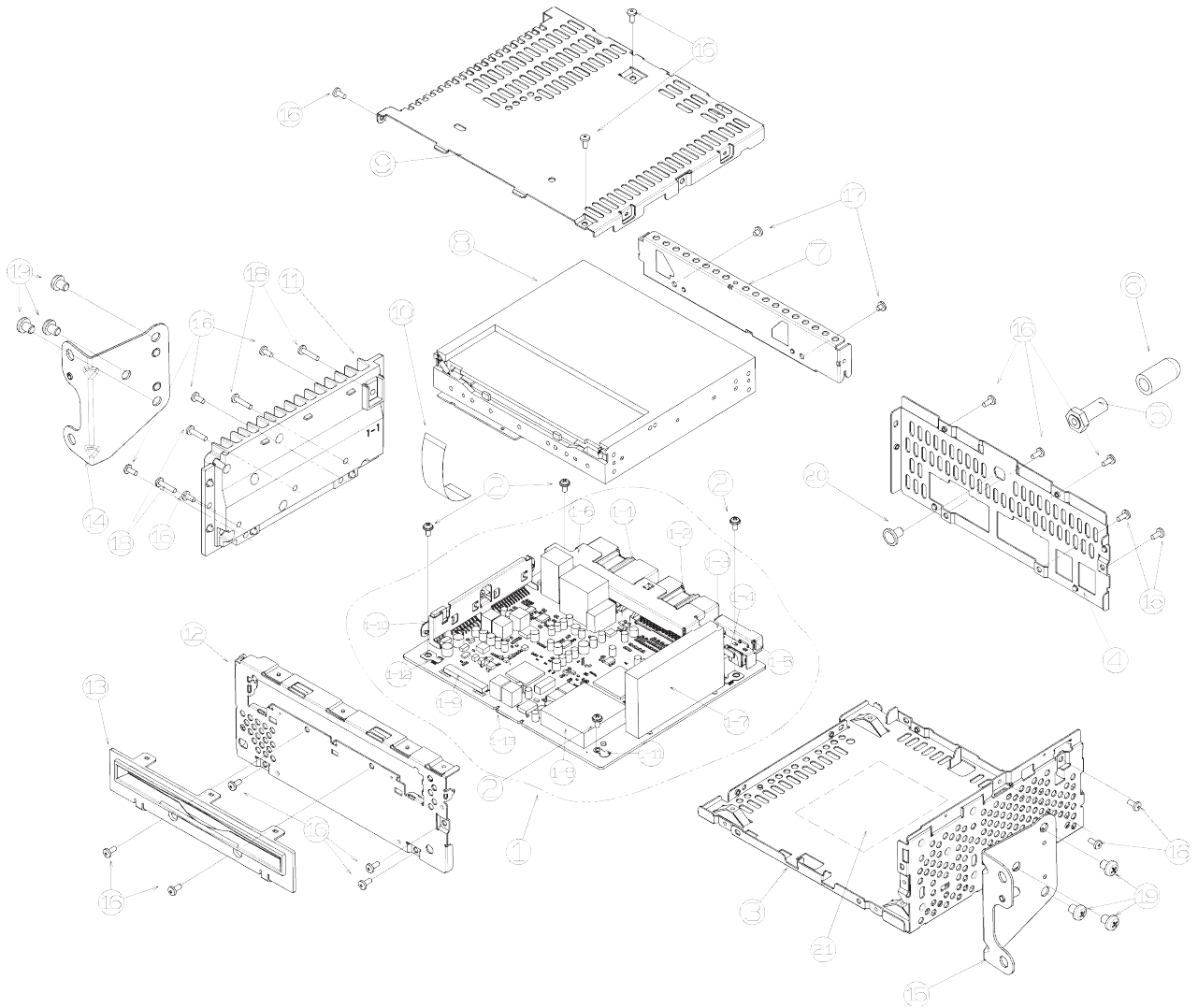
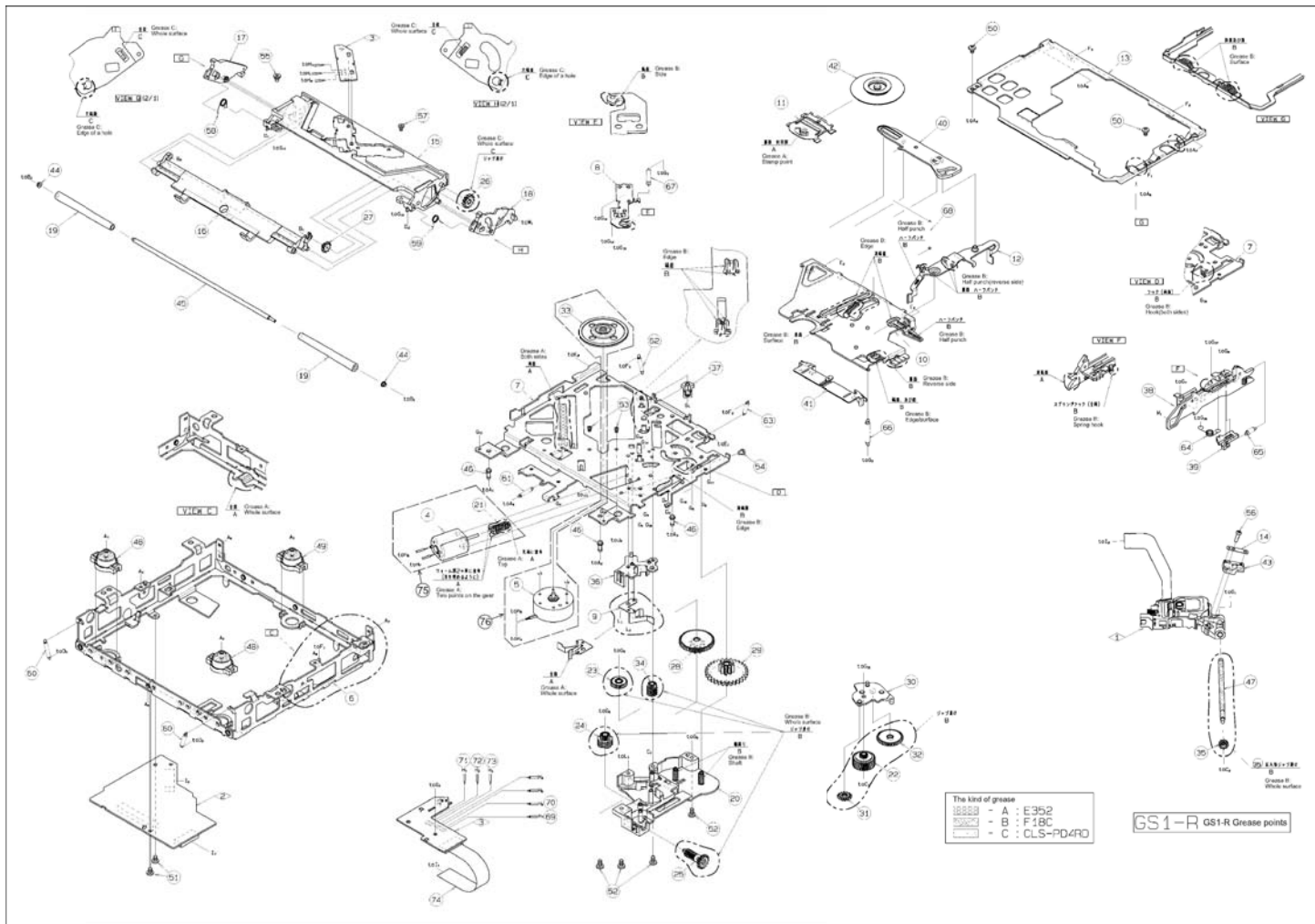


# EXPLODED VIEW / PARTS LIST



NO.	PART NO.	DESCRIPTION	Q'TY	NO.	PART NO.	DESCRIPTION	Q'TY
1	-----	MAIN-PWB-ASSY(3527B7-75)	1	5	716-3607-00	REAR BOLT	1
1-1	074-4047-00	OUTLET SOCKET	1	6	345-6054-00	RUBBER PART	1
1-2	074-4048-00	OUTLET SOCKET	1	7	331-4824-00	MECH-BRKT	1
1-3	092-2255-01	ANT-RECEPT	1	8	929-5140-80	CD-MECH-MODULE	1
1-4	-	(SIRI-FAKRA) *N/A	-	9	303-0497-00	UPPER-CVR	1
1-5	331-4827-01	ANT-HOLDER	1	10	816-4062-50	FLAT WIRE	1
1-6	331-4826-00	CON-HOLDER	1	11	313-2093-00	HEAT SINK	1
1-7	-	(SIRI-MODULE) *N/A	-	12	309-1905-01	FRONT PLATE	1
1-8	-	(HD TUNER) *N/A	-	13	335-8684-01	DISC GUIDE	1
1-9	074-2506-27	OUTLET SOCKET	1	14	300-8241-01	MTG-BRKT-ASSY L	1
1-10	331-4825-00	IC-HOLDER	1	15	300-8242-01	MTG-BRKT-ASSY R	1
1-11	073-0768-90	TERMINAL	2	16	714-2606-8B	MACHINE SCREW	19
1-12	073-0762-90	TERMINAL	2	17	714-2603-89	MACHINE SCREW	2
1-13	076-6000-58	PLUG	1	18	714-2612-8H	MACHINE SCREW	4
2	716-0878-50	SPECIAL SCREW	4	19	714-5006-8B	MACHINE SCREW	6
3	304-0492-01	LOWER CASE	1	20	716-0678-50	SPECIAL SCREW	1
4	307-0743-10	REAR-CVR	1	21	276-0919-57	SETPLATE	1

# EXPLODED VIEW / PARTS LIST



NO.	PART NO.	DESCRIPTION	Q'TY	NO.	PART NO.	DESCRIPTION	Q'TY
1	969-0080-30	PICKUP-ASSY	1	39	621-1869-21	RACK	1
2	-----	MAIN-PWB-ASSY(5141AH-97)	1	40	621-1870-21	STOPPER LINK	1
3	-----	SENS-PWB-ASSY(5100BH-95)	1	41	621-1871-22	DISC STOPPER	1
4	-----	DC-MOTOR(154000-020)	1	42	621-1872-21	CLAMPER RING	1
5	-----	DC-MOTOR(154100-020)	1	43	621-1873-21	LS-RACK	1
6	620-1919-21	LOWER CHASSIS	1	44	621-1726-21	ROLLER SLEEVE	2
7	620-1911-20	DRIVE PLATE	1	45	622-1885-20	ROLLER SHAFT	1
8	620-1912-21	ID-LOCK PLATE	1	46	622-1886-20	DAMPER PIN	3
9	620-1913-20	SPRING PLATE	1	47	624-3062-20	LEAD SCREW	1
10	620-1914-21	CLAMPER ARM	1	48	629-0138-21	DAMPER F	2
11	620-1915-22	CLAMPER PLATE	1	49	629-0139-21	DAMPER R	1
12	620-1916-22	SENSOR ARM	1	50	714-2003-8B	MACHIN SCREW	2
13	620-1928-20	UPPER CHASSIS	1	51	716-3718-00	SPECIAL SCREW	2
14	620-1918-21	LS-RACK PLATE	1	52	716-3719-00	SPECIAL SCREW	4
15	621-1845-22	UPPER GUIDE	1	53	716-3720-00	SPECIAL SCREW	2
16	621-1846-22	ROLLER GUIDE	1	54	716-3721-00	SPECIAL SCREW	1
17	621-1847-20	LOCK ARM L	1	55	716-3722-00	SPECIAL SCREW	1
18	621-1848-22	LOCK ARM R	1	56	716-3723-02	SPECIAL-SCREW	1
19	621-1849-20	LOADING ROLLER	2	57	716-3724-00	SPECIAL SCREW	1
20	621-1850-22	GEAR BOX	1	58	750-7924-21	ROLLER SPRING	1
21	-----	MOTOR GEAR(185121-621)	1	59	750-7925-21	ROLLER SPRING	1
22	621-1852-20	SECOND GEAR	1	60	750-7926-20	DR-SPRING F	2
23	621-1853-20	ROLLER GEAR A	1	61	750-7927-20	DR-SPRING C	1
24	621-1854-20	ROLLER GEAR B	1	62	750-7928-20	DR-SPRING RA	1
25	621-1855-20	ROLLER GEAR C	1	63	750-7929-20	DR-SPRING RB	1
26	621-1856-20	ROLLER GEAR D	1	64	750-7930-00	SHIFT SPRING	1
27	621-1857-21	ROLLER GEAR E	1	65	750-7931-20	RACK SPRING	1
28	621-1858-20	POWER GEAR A	1	66	750-7932-20	CLAMPER SPRING	1
29	621-1859-20	POWER GEAR B	1	67	750-7933-20	ID-LOCK SPRING	1
30	621-1860-21	IDLE CASE	1	68	750-7934-20	SENSOR SPRING	1
31	621-1861-20	IDLE GEAR A	1	69	803-4906-60	VINYL-COAT-WIRE	1
32	621-1862-20	IDLE GEAR B	1	70	816-2590-00	SPECIAL LEAD	1
33	-----	TURN TABLE(186320-621)	1	71	816-2591-00	SPECIAL LEAD	1
34	621-1864-20	THREAD GEAR A	1	72	816-2592-00	SPECIAL LEAD	1
35	621-1865-20	THREAD GEAR B	1	73	816-2593-00	SPECIAL LEAD	1
36	621-1866-20	LS-HOLDER A	1	74	816-4070-50	FLAT WIRE	1
37	621-1867-20	LS-HOLDER B	1	75	HBS-668-100	POWER MOTOR ASSY	1
38	621-1868-23	SHIFT LEVER	1	76	HBS-669-100	SPINDLE MOTOR ASSY	1

## ELECTRICAL PARTS LIST

### MAIN PWB(B1) section

REF No.	PART No.	DESCRIPTION	REF No.	PART No.	DESCRIPTION	REF No.	PART No.	DESCRIPTION
C1	-----	(N/A)	C50	045-1201-50	12pFJ CH	R8	-----	(N/A)
C2	-----	(N/A)	C51	045-1201-50	12pFJ CH	R9	033-2211-15	1/16W 220 ohm J
C3	168-1052-78	16V 1uF K	C55	168-1042-78	16V 0.1uF K	R10	-----	(N/A)
C4	-----	(N/A)	C58	045-6097-50	6 +/-0.5pF CH	R11	033-1531-15	1/16W 15k ohm J
C5	-----	(N/A)	C64	165-4763-15	6.3V 47uF	R12	033-4731-15	1/16W 47k ohm J
C6	168-1052-78	16V 1uF K	C65	046-1032-78	16V 0.01uF	R13	033-3341-15	1/16W 330k ohm J
C7	042-0560-85	6.3V 100uF	C68	168-1042-78	16V 0.1uF K	R14	-----	(N/A)
C8	168-1052-78	16V 1uF K	C71	-----	(N/A)	R15	033-4731-15	1/16W 47k ohm J
C9	-----	(N/A)	C72	-----	(N/A)	R16	033-3331-15	1/16W 33k ohm J
C10	046-1042-78	16V 0.1uF	C73	-----	(N/A)	R17	-----	(N/A)
C11	168-1042-78	16V 0.1uF K	C74	165-4763-15	6.3V 47uF	R18	033-1051-15	1/16W 1M ohm J
C13	168-1042-78	16V 0.1uF K	C75	168-1042-78	16V 0.1uF K	R19	033-2221-15	1/16W 2.2k ohm J
C14	046-4722-58	4700pF K B	C77	046-1042-78	16V 0.1uF	R20	119-0000-05	1/10W 0 ohm JW
C15	-----	(N/A)	C78	168-1042-78	16V 0.1uF K	R21	119-1011-15	1/10W 100 ohm
C17	165-1073-35	16V 100uF	C80	168-1042-78	16V 0.1uF K	R22	033-4721-15	1/16W 4.7k ohm J
C18	168-1042-78	16V 0.1uF K	C81	046-1042-78	16V 0.1uF	R23	-----	(N/A)
C19	046-1042-78	0.15uF K	C83	042-1710-90	6.3V 100uF	R24	-----	(N/A)
C20	046-1532-78	0.015uF K B	C84	045-1011-50	100pFJ CH	R25	033-4721-15	1/16W 4.7k ohm J
C21	046-1042-78	16V 0.1uF	C85	168-1042-78	16V 0.1uF K	R26	-----	(N/A)
C22	168-1042-78	16V 0.1uF K	CCT1	050-0140-57	1/32W 10k ohm x4J	R27	033-2211-15	1/16W 220 ohm J
C23	046-1522-58	1500pF K B	D1	001-9210-50	AVR-	R28	033-2211-15	1/16W 220 ohm J
C24	046-1042-78	16V 0.1uF			M1608C270MTAAD	R29	033-2211-15	1/16W 220 ohm J
C25	046-2222-58	2200pF K B	D2	-----	(N/A)	R30	033-2211-15	1/16W 220 ohm J
C26	-----	(N/A)	D3	-----	(N/A)	R31	033-2211-15	1/16W 220 ohm J
C27	168-1042-78	16V 0.1uF K	D4	-----	(N/A)	R32	033-2211-15	1/16W 220 ohm J
C29	046-1032-78	16V 0.01uF	IC1	051-6752-00	TC94A92FG-301	R33	033-2211-15	1/16W 220 ohm J
C30	046-4712-58	470pF K B	IC2	051-6101-90	BD8226EFV	R34	033-2211-15	1/16W 220 ohm J
C31	046-4712-58	470pF K B	IC3	051-3598-90	BU15TA2WHFV	R35	033-2211-15	1/16W 220 ohm J
C32	046-3332-78	0.033uF K B	IC4	-----	BH33MAWHFV	R36	033-2211-15	1/16W 220 ohm J
C33	168-1532-55	0.015uF K			(Regulator)	R37	-----	(N/A)
C34	168-1042-78	16V 0.1uF K			(Bottom pad type)	R38	-----	(N/A)
C35	166-6801-50	68pF CH			(350990-051)	R39	-----	(N/A)
C36	046-6822-58	6800pF K B	J1	074-2215-65	15P	R40	033-1041-15	1/16W 100k ohm J
C37	045-4701-50	47pF CH	J2	074-2504-10	OUTLET SOCKET	R45	033-1021-15	1/16W 1k ohm J
C39	046-1042-78	16V 0.1uF	J3	074-2506-27	27P	R68	033-1021-15	1/16W 1k ohm J
C40	168-1042-78	16V 0.1uF K	L1	010-3105-69	80 ohm/100MHz	R91	-----	(N/A)
C41	046-5622-58	5600pF K B	Q1	190-1365-50	2SA1365 AF,AG	R94	-----	(N/A)
C42	168-1042-78	16V 0.1uF K	R1	033-2211-15	1/16W 220 ohm J	TH1	002-0315-00	TN10-3U153JT
C43	046-4732-78	16V 0.047uF	R2	117-1821-15	1/8W 1.8k ohm	TM1	073-0792-90	TERMINAL
C44	046-4732-78	16V 0.047uF	R3	117-1001-15	1/8W 10 ohm	X1	061-3586-90	DSX321G(F) 16.920MHz
C45	168-1042-78	16V 0.1uF K	R4	033-1831-15	1/16W 18k ohm J	PWB	039-3950-20	PWB(WITHOUT COMPONENTS)
C46	043-0570-90	16V 2.2uF K	R5	033-1231-15	1/16W 12k ohm J			
C47	168-1042-78	16V 0.1uF K	R6	033-1541-15	1/16W 150k ohm J			
C49	168-1042-78	16V 0.1uF K	R7	033-1031-15	1/16W 10k ohm J			

### SENSOR PWB(B2) section

REF No.	PART No.	DESCRIPTION	REF No.	PART No.	DESCRIPTION	REF No.	PART No.	DESCRIPTION
C1	-----	(N/A)	J1	074-2504-10	OUTLET SOCKET	S2	013-7414-50	SPVG220100
D1	001-7138-91	SML-S13RT T86	Q1	060-4025-90	SML-H10BT86	PWB	039-3732-20	PWB(WITHOUT COMPONENTS)
D2	001-7138-91	SML-S13RT T86	Q2	060-4025-90	SML-H10BT86			