

SPECIFICATIONS

FM Tuner

Frequency Range:

< General overseas market >

87.5MHz to 108.0MHz
(AUTO 50KHz STEP, MANU 50KHz STEP)

< Central and South America >

87.5MHz to 108.0MHz
(AUTO 100KHz STEP, MANU 100KHz STEP)

Quieting sens.: Less than 15dBuV (S/N=30dB)

Stereo separation: More than 22 +/-5dB (1K)

More than 10 +/-5dB (7K)

(98.1MHz, ANT.IN 65dBuV)

SASC sens. 37 +/- 5dBu (at 98.1MHz, MOD.7KHz,

ANT.IN 65dBuV -1dB POINT)

Auto stop sens.: DX 32 +/- 6dBuV

S/N: More than 50dB

(ANT.IN 55dBuV, 0dB=1.4V)

Noise level -20dBuV IN: -8 +/- 3dB

(at 98.1MHz, ANT.IN 55dBuV -> -20dBuV)

AM Tuner

Frequency Range:

< General overseas market >

531KHz to 1602KHz
(AUTO 9KHz STEP, MANU 9KHz STEP)

< Central and South America >

530KHz to 1710KHz
(AUTO 5KHz STEP, MANU 5KHz STEP)

Quieting sens.: Less than 37dBuV (S/N=20dB)

Auto stop sens.: DX 44 +/- 6dBuV

S/N: More than 40dB

(ANT.IN 74dBuV, 0dB=1.4V)

CD Player

Distortion: Less than 0.2%(20kHz LPF)

S/N: More than 74dB

Separation: More than 50dB

General

Backup current : Less than 1mA

(at 13.2V, 30 sec after ACC OFF)

Test conditions

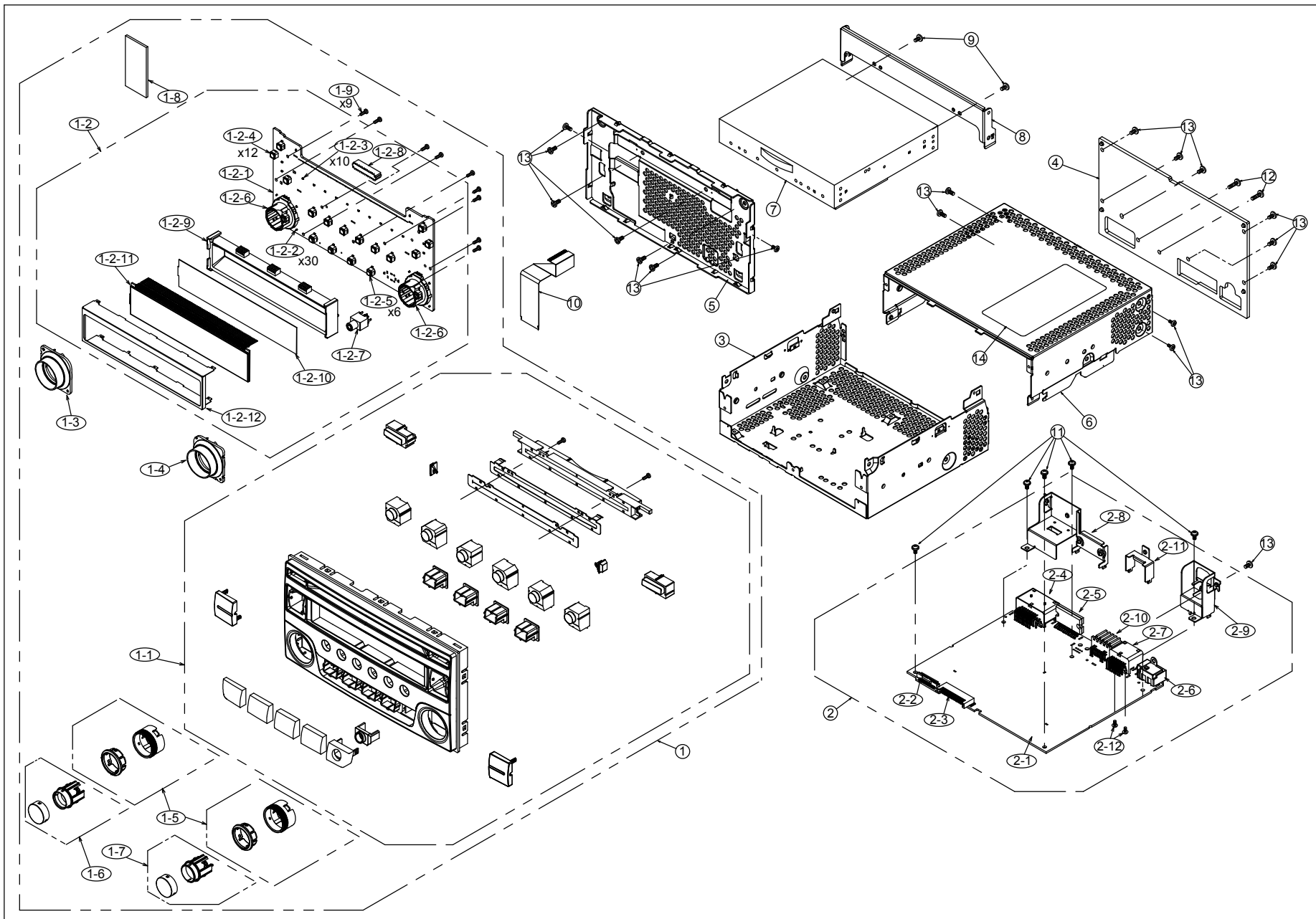
Power supply voltage: 13.2V DC, negative ground

Load resistance: 4 ohm

* For details, please refer to the design specifications.

EXPLODED VIEW / PARTS LIST

NO.	PART NO.	DESCRIPTION	Q'TY
1	-----	PANEL-ASSY(3484A0-45)	1
1-1	940-8626-00	ESCUTCHEON-ASSY	1
1-2	-----	SW-PWB-ASSY(3484A7-77)	1
1-2-1	-----	SW PWB(385600-039)	1
1-2-2	001-7109-90	DIODE	30
1-2-3	001-7148-90	DIODE	12
1-2-4	013-6202-52	TACT SWITCH	12
1-2-5	013-6201-53	SWITCH	6
1-2-6	016-7006-00	ROTARY ENCODER	2
1-2-7	075-0395-01	JACK	1
1-2-8	074-3055-26	OUTLET SOCKET	1
1-2-9	335-9150-00	LCD HOLDER	1
1-2-10	335-9151-00	LCD REFLECTOR	1
1-2-11	379-1462-53	LCD	1
1-2-12	331-5137-00	LCD COVER	1
1-3	335-9147-00	ILLUMI RING(L)	1
1-4	335-9148-00	ILLUMI RING(R)	1
1-5	947-0787-02	KNOB-ASSY	2
1-6	947-0788-02	BUTTON-ASSY(L)	1
1-7	947-0789-02	BUTTON-ASSY(R)	1
1-8	345-8090-00	CUSHION RUBBER	1
1-9	716-0778-52	SPECIAL SCREW	9
2	-----	MAIN-PWB-ASSY(3484A7-75)	1
2-1	-----	MAIN PWB(379500-039)	1
2-2	074-2260-88	OUTLET SOCKET	1
2-3	076-3011-76	PLUG	1
2-4	074-4009-20	OUTLET SOCKET	1
2-5	051-2064-00	IC	1
2-6	092-2210-00	ANT-RECEPT	1
2-7	074-1302-16	OUTLET SOCKET	1
2-8	331-5153-00	SOCKET HOLDER	1
2-9	331-4676-00	ANT-HOLDER	1
2-10	074-1013-00	OUTLET SOCKET	1
2-11	331-5139-00	SOCKET HOLDER	1
2-12	778-3006-00	TAP-SCREW	2
3	311-1969-00	LOWER CASE	1
4	313-2070-10	HEAT SINK	1
5	309-1943-00	ES PLATE	1
6	310-1889-00	UPPER CASE	1
△7	929-5180-81	CD-MECH-MODULE	1
8	331-5138-00	CD BRKT	1
9	714-2603-89	MACHINE SCREW	2
10	816-3064-05	FLAT WIRE	1
11	716-0878-50	SPECIAL SCREW	5
12	735-2614-1B	D-SEMS SCREW	2
13	714-2606-8B	MACHINE SCREW	18
14	276-0359-57	SETPLATE	1



ELECTRICAL PARTS LIST

MAIN PWB(B1) section

* Neither the part numbers of parts on which software is written, nor part numbers of parts for which replacement is prohibited in the production process are listed in the parts list.

REF NO.	PART NO.	DESCRIPTION	REF NO.	PART NO.	DESCRIPTION	REF NO.	PART NO.	DESCRIPTION
C101	168-2222-55	2200pF K	C324	046-1042-78	0.1uF K B	C524	168-1542-58	0.15uF K
C105	166-1201-50	12pF CH	C325	046-1042-78	0.1uF K B	C525	168-1052-78	16V 1uF K
C106	166-1201-50	12pF CH	C326	046-1042-78	0.1uF K B	C526	042-1760-90	16V 10uF M
C108	046-1022-58	50V 1000pF	C327	046-1042-78	0.1uF K B	C527	178-2742-78	0.27uF
C109	046-1022-58	50V 1000pF	C328	046-1042-78	0.1uF K B	C528	168-1052-78	16V 1uF K
C115	046-5612-58	560pF K B	C329	045-1007-50	10 +/-0.5pF CH	C530	043-0574-90	25V 1.0uF
C116	046-5612-58	560pF K B	C330	045-1007-50	10 +/-0.5pF CH	C532	168-1832-55	0.018uF K
C117	046-5612-58	560pF K B	C331	046-1042-78	0.1uF K B	C533	043-5600-90	0.10uF
C122	168-1042-38	50V 0.1uF K	C333	168-4752-98	4.7uF K	C534	042-1717-00	16V 3300uF
C125	045-3911-50	390pFJ CH	C335	046-1042-78	0.1uF K B	C535	168-6822-55	6800pF K
C126	045-3911-50	390pFJ CH	C336	046-1042-78	0.1uF K B	C536	168-6822-55	6800pF K
C127	045-3911-50	390pFJ CH	C337	046-1042-78	0.1uF K B	C537	168-6822-55	6800pF K
C128	045-2201-50	22pFJ CH	C338	042-4033-90	6.3V 220uF	C538	168-6822-55	6800pF K
C129	046-1022-58	50V 1000pF	C339	046-1042-78	0.1uF K B	C539	168-6822-55	6800pF K
C130	046-1022-58	50V 1000pF	C340	168-4752-98	4.7uF K	C540	168-6822-55	6800pF K
C131	045-3901-50	39pFJ CH	C341	045-2201-50	22pFJ CH	C541	168-6822-55	6800pF K
C132	045-1211-50	120pFJ CH	C342	046-1042-78	0.1uF K B	C542	168-6822-55	6800pF K
C133	045-4796-50	4.7pFJ CH	C345	046-1042-78	0.1uF K B	C543	168-1042-78	16V 0.1uF K
C134	045-1501-50	15pFJ CH	C347	168-1052-78	16V 1uF K	C544	168-2232-55	0.022uF K
C135	045-2211-50	220pFJ CH	C348	046-1042-78	0.1uF K B	C545	043-0604-90	25V 10uF B
C136	046-3922-58	3900pF K B	C349	046-1042-78	0.1uF K B	C546	046-1022-58	50V 1000pF
C137	046-1022-58	50V 1000pF	C350	046-1042-78	0.1uF K B	C547	043-7503-90	4.7uF
C138	046-1032-78	0.01uF K B	C351	046-1042-78	0.1uF K B	C548	043-6400-90	16V 4.7uF K
C139	046-1032-78	0.01uF K B	C352	043-0552-90	6.3V 47uF M	C553	043-0603-90	16V 10uF
C141	046-3322-58	3300pF K B	C353	043-0559-90	6.3V 22uF	C554	043-0603-90	16V 10uF
C142	046-2232-78	0.022uF K B	C354	168-1052-78	16V 1uF K	C555	046-1042-78	0.1uF K B
C143	046-1022-58	50V 1000pF	C355	046-1042-78	0.1uF K B	C556	043-0552-90	6.3V 47uF M
C144	046-2232-78	0.022uF K B	C356	046-1042-78	0.1uF K B	C557	043-6400-90	16V 4.7uF K
C145	046-2232-78	0.022uF K B	C357	046-1042-78	0.1uF K B	C558	043-0570-90	16V 2.2uF K
C146	046-2232-78	0.022uF K B	C358	045-2201-50	22pFJ CH	C559	043-0570-90	16V 2.2uF K
C147	046-2232-78	0.022uF K B	C360	046-1042-78	0.1uF K B	C562	046-1022-58	50V 1000pF
C148	043-0562-90	10V 0.22uF	C361	046-1042-78	0.1uF K B	C564	168-4752-98	4.7uF K
C149	046-2232-78	0.022uF K B	C362	046-1042-78	0.1uF K B	C565	043-0603-90	16V 10uF
C150	043-0563-90	16V 47uF	C364	046-1042-78	0.1uF K B	C568	046-1022-58	50V 1000pF
C161	043-0604-90	25V 10uF B	C365	045-4711-50	470pFJ CH	C569	043-7503-90	4.7uF
C162	046-1042-78	0.1uF K B	C366	046-1022-58	50V 1000pF	C570	043-6400-90	16V 4.7uF K
C202	046-2222-58	2200pF K B	C367	046-1042-78	0.1uF K B	C571	043-0604-90	25V 10uF B
C203	046-1042-78	0.1uF K B	C368	046-3322-58	3300pF K B	C572	043-7701-90	2.2uF
C204	046-2222-58	2200pF K B	C369	046-3322-58	3300pF K B	C574	045-4701-50	47pF CH
C206	165-3363-25	10V 33uF	C370	042-4033-90	6.3V 220uF	C575	168-4742-78	0.47uF K
C207	168-1022-55	1000pF K	C371	046-3322-58	3300pF K B	C576	168-1042-38	50V 0.1uF K
C208	168-1022-55	1000pF K	C372	046-3322-58	3300pF K B	C577	046-1522-58	1500pF K B
C209	168-1022-55	1000pF K	C373	046-1042-78	0.1uF K B	C578	045-2201-50	22pFJ CH
C210	043-0570-90	16V 2.2uF K	C375	046-3322-58	3300pF K B	C579	178-2242-38	0.22uF B
C211	043-0570-90	16V 2.2uF K	C376	046-3322-58	3300pF K B	C580	042-4000-90	16V 470uF
C212	043-0570-90	16V 2.2uF K	C377	046-1522-58	1500pF K B	C581	165-4763-35	16V 47uF
C213	043-0570-90	16V 2.2uF K	C378	046-1522-58	1500pF K B	D101	001-9013-90	BA891
C214	168-4722-55	4700pF K	C379	046-1522-58	1500pF K B	D102	001-9013-90	BA891
C215	168-4722-55	4700pF K	C380	046-1522-58	1500pF K B	D103	001-9013-90	BA891
C216	168-3332-78	0.033uF K	C381	043-0559-90	6.3V 22uF	D104	001-9013-90	BA891
C217	168-3332-78	0.033uF K	C401	046-1042-78	0.1uF K B	D105	001-0580-90	1SS352
C218	168-1042-78	16V 0.1uF K	C402	046-1042-78	0.1uF K B	D106	001-9013-90	BA891
C301	043-0570-90	16V 2.2uF K	C407	168-4752-98	4.7uF K	D201	001-0580-90	1SS352
C302	043-0570-90	16V 2.2uF K	C408	004-1580-14	45pF	D202	001-0580-90	1SS352
C303	043-0570-90	16V 2.2uF K	C410	046-1042-78	0.1uF K B	D203	001-0580-90	1SS352
C304	043-0570-90	16V 2.2uF K	C411	165-4763-15	6.3V 47uF	D401	001-2630-90	1SS420-TPL3.F
C305	045-2201-50	22pFJ CH	C412	045-2701-50	27pFJ CH	D501	001-2412-90	RR264M-400
C306	045-2201-50	22pFJ CH	C413	046-1042-78	0.1uF K B	D502	001-0580-90	1SS352
C309	046-1042-78	0.1uF K B	C414	046-1032-78	0.01uF K B	D504	001-2412-90	RR264M-400
C310	168-1052-78	16V 1uF K	C415	046-1022-58	50V 1000pF	D505	001-2639-90	RSX201L-30
C312	046-1042-78	0.1uF K B	C416	046-1022-58	50V 1000pF	D506	001-2628-90	RB160M-40
C314	045-2201-50	22pFJ CH	C417	046-1022-58	50V 1000pF	FL101	060-8106-90	#617DB-2195=P3
C315	045-2201-50	22pFJ CH	C418	042-2273-25	10V 220uF M	IC101	-----	TEF7000(Tuner) (Thermal pad type) (402590-051)
C316	046-1042-78	0.1uF K B	C420	045-1011-50	100pFJ CH	IC301	051-3034-90	NJM4558V
C317	046-1042-78	0.1uF K B	C517	168-1542-58	0.15uF K	IC302	-----	SAF7741HV/N125 (DSP) (Thermal pad type) (674700-051)
C318	046-1042-78	0.1uF K B	C518	168-1542-58	0.15uF K	IC303	051-7106-90	CD4052B-PWR
C319	046-1042-78	0.1uF K B	C519	168-1542-58	0.15uF K			
C320	043-0570-90	16V 2.2uF K	C520	168-1542-58	0.15uF K			
C321	043-0570-90	16V 2.2uF K	C521	168-1542-58	0.15uF K			
C322	168-4752-98	4.7uF K	C522	168-1542-58	0.15uF K			
C323	168-4752-98	4.7uF K	C523	168-1542-58	0.15uF K			

REF NO.	PART NO.	DESCRIPTION	REF NO.	PART NO.	DESCRIPTION	REF NO.	PART NO.	DESCRIPTION
IC401	-----	S-24C16CI-T8T5U3 (E2P-ROM) (Software should be written on production) (942650-051)	L322	010-3104-54	600 ohm/100MHz	R203	033-1011-15	1/16W 100 ohm J
			L323	010-3104-54	600 ohm/100MHz	R204	119-5631-15	1/10W 56k ohm
			L401	010-3406-54	2.2uH J	R205	119-5631-15	1/10W 56k ohm
			L501	010-8050-00	240uH	R206	119-3011-15	1/10W 300 ohm
			L507	010-3104-54	600 ohm/100MHz	R207	119-3011-15	1/10W 300 ohm
			L508	010-3414-93	4.7uH	R208	119-1031-15	1/10W 10k ohm
IC402	-----	R5F64176PFB (FLASH-MICOM) (Software should be written on production) (033310-052)	P101	092-2210-00	ANTENNA RECEPT	R209	119-1031-15	1/10W 10k ohm
			P410	076-3011-76	26P	R210	119-5631-15	1/10W 56k ohm
			Q103	192-4116-00	2SC4116	R211	119-1031-15	1/10W 10k ohm
			Q104	192-4116-00	2SC4116	R212	119-4731-15	1/10W 47k ohm
			Q105	192-4116-00	2SC4116	R213	119-2231-15	1/10W 22k ohm
IC404	051-5481-90	S-1009N30I- M5T1U	Q107	190-2060-00	2SA2060	R214	119-4731-15	1/10W 47k ohm
			Q108	125-2046-95	DTC143ZUB	R215	032-0140-89	1/10W 47k ohm F
IC502	051-2064-00	TB2926HQ	Q201	192-4081-00	2SC4081	R216	032-0140-89	1/10W 47k ohm F
IC504	051-5443-08	BD4850G-TR	Q202	192-4081-00	2SC4081	R217	119-1531-15	1/10W 15k ohm
IC505	-----	BD00C0AWFP (Voltage regulator) (Thermal pad) (358290-051)	Q203	192-4081-00	2SC4081	R218	119-3011-15	1/10W 300 ohm
			Q204	125-2046-91	DTC114EUBTL	R219	119-1031-15	1/10W 10k ohm
			Q205	125-0035-91	DTA114EUBLT	R224	119-2231-15	1/10W 22k ohm
			Q206	125-2046-91	DTC114EUBTL	R225	119-0000-05	1/10W 0 ohm JW
			Q207	125-0021-96	DTA144TU	R226	119-0000-05	1/10W 0 ohm JW
IC507	051-3034-90	NJM4558V	Q301	125-2046-95	DTC143ZUB	R301	119-1031-15	1/10W 10k ohm
IC508	051-3579-90	1112B15MCL6 ATFG	Q302	125-7021-90	RQ1A060ZPTR	R302	119-1031-15	1/10W 10k ohm
			Q505	191-1197-50	2SB1197K Q,R	R303	032-0140-89	1/10W 47k ohm F
IC509	051-3708-90	S-1112B33MC- L6STFG	Q506	192-4116-00	2SC4116	R304	032-0140-89	1/10W 47k ohm F
			Q507	125-2046-91	DTC114EUBTL	R305	032-0140-89	1/10W 47k ohm F
IC511	-----	BD00C0AWFP (Voltage regulator) (Thermal pad) (358290-051)	Q510	125-2032-93	RN1303	R306	032-0140-89	1/10W 47k ohm F
			Q511	192-4081-00	2SC4081	R307	033-1031-15	1/16W 10k ohm J
			Q512	191-1197-50	2SB1197K Q,R	R308	032-0140-89	1/10W 47k ohm F
IC513	-----	BD00D0AWHFP- TR (Voltage regulator) (Thermal pad) (370990-051)	Q513	125-2046-91	DTC114EUBTL	R309	032-0140-89	1/10W 47k ohm F
			Q514	192-4116-51	2SC4116 G,L	R310	032-0140-89	1/10W 47k ohm F
			Q515	191-1197-50	2SB1197K Q,R	R311	032-0140-89	1/10W 47k ohm F
			Q516	125-2046-91	DTC114EUBTL	R313	033-1031-15	1/16W 10k ohm J
			R102	119-0000-05	1/10W 0 ohm JW	R314	032-0221-53	1/16W 18k ohm F
IC514	-----	LT3481EDD #TRPBF (SW-REGULATOR) (thermal pad type) (361280-051)	R103	032-0221-79	1/16W 1.2k ohm F	R315	032-0221-53	1/16W 18k ohm F
			R105	032-0221-79	1/16W 1.2k ohm F	R316	032-0221-53	1/16W 18k ohm F
			R109	033-1021-15	1/16W 1k ohm J	R317	032-0221-53	1/16W 18k ohm F
			R110	033-1011-15	1/16W 100 ohm J	R318	033-1811-15	1/16W 180 ohm J
			R111	033-1021-15	1/16W 1k ohm J	R319	033-1811-15	1/16W 180 ohm J
			R112	033-1011-15	1/16W 100 ohm J	R320	033-1031-15	1/16W 10k ohm J
J201	074-2260-88	38P	R113	033-1021-15	1/16W 1k ohm J	R321	033-1031-15	1/16W 10k ohm J
J202	074-1013-00	12P	R114	033-1011-15	1/16W 100 ohm J	R322	033-1031-15	1/16W 10k ohm J
J203	074-1302-16	16P	R115	033-0000-05	1/16W 0 ohm	R323	033-1011-15	1/16W 100 ohm J
J501	074-4009-20	20P	R118	033-4721-15	1/16W 4.7k ohm J	R324	033-1031-15	1/16W 10k ohm J
L105	010-2198-52	3.3uH	R119	033-4721-15	1/16W 4.7k ohm J	R325	032-0150-50	1/16W 10k ohm F
L106	010-2198-52	3.3uH	R120	033-4721-15	1/16W 4.7k ohm J	R326	033-1031-15	1/16W 10k ohm J
L110	010-3062-54	290nH	R121	033-4721-15	1/16W 4.7k ohm J	R327	032-0150-50	1/16W 10k ohm F
L111	010-3406-56	3.3uH J	R122	033-4721-15	1/16W 4.7k ohm J	R329	032-0150-50	1/16W 10k ohm F
L112	010-3062-56	0.5uH	R123	033-4721-15	1/16W 4.7k ohm J	R331	032-0150-50	1/16W 10k ohm F
L113	010-3062-53	0.215uH	R124	033-1811-15	1/16W 180 ohm J	R332	119-2201-15	1/10W 22 ohm
L114	010-3439-51	1.8uH	R125	033-3311-15	1/16W 330 ohm J	R334	033-1041-15	1/16W 100k ohm J
L115	010-2290-52	330uH	R126	033-4741-15	1/16W 470k ohm J	R335	033-1041-15	1/16W 100k ohm J
L116	010-2290-52	330uH	R127	033-1201-15	1/16W 12 ohm	R336	032-0150-50	1/16W 10k ohm F
L117	010-3104-54	600 ohm/100MHz	R128	033-4741-15	1/16W 470k ohm J	R337	032-0150-50	1/16W 10k ohm F
L301	010-3104-54	600 ohm/100MHz	R129	033-5601-15	1/16W 56 ohm J	R338	033-4731-15	1/16W 47k ohm J
L302	010-3104-54	600 ohm/100MHz	R134	033-2231-15	1/16W 22k ohm J	R344	033-1011-15	1/16W 100 ohm J
L303	010-3104-54	600 ohm/100MHz	R135	033-3921-15	1/16W 3.9k ohm J	R348	033-1031-15	1/16W 10k ohm J
L304	010-3104-54	600 ohm/100MHz	R136	033-0000-05	1/16W 0 ohm	R349	033-1011-15	1/16W 100 ohm J
L305	010-3104-54	600 ohm/100MHz	R137	033-0000-05	1/16W 0 ohm	R350	033-1011-15	1/16W 100 ohm J
L306	010-3104-54	600 ohm/100MHz	R138	033-0000-05	1/16W 0 ohm	R352	033-1011-15	1/16W 100 ohm J
L307	010-3104-54	600 ohm/100MHz	R139	033-0000-05	1/16W 0 ohm	R354	033-1011-15	1/16W 100 ohm J
L308	010-3104-54	600 ohm/100MHz	R140	033-0000-05	1/16W 0 ohm	R355	033-1031-15	1/16W 10k ohm J
L309	010-3104-54	600 ohm/100MHz	R143	033-0000-05	1/16W 0 ohm	R356	119-0000-05	1/10W 0 ohm JW
L310	010-3104-54	600 ohm/100MHz	R144	033-0000-05	1/16W 0 ohm	R357	119-0000-05	1/10W 0 ohm JW
L311	010-3104-54	600 ohm/100MHz	R146	116-1091-15	1/4W 1 ohm	R358	033-1011-15	1/16W 100 ohm J
L312	010-3104-54	600 ohm/100MHz	R147	116-1221-15	1/4W 1.2k ohm	R359	119-2201-15	1/10W 22 ohm
L313	010-3104-54	600 ohm/100MHz	R151	033-1031-15	1/16W 10k ohm J	R360	032-0150-54	1/16W 1k ohm F
L314	010-3104-54	600 ohm/100MHz	R152	033-0000-05	1/16W 0 ohm	R361	032-0150-54	1/16W 1k ohm F
L315	010-3104-54	600 ohm/100MHz	R154	119-0000-05	1/10W 0 ohm JW	R362	032-0150-54	1/16W 1k ohm F
L316	010-3104-54	600 ohm/100MHz	R155	119-0000-05	1/10W 0 ohm JW	R363	032-0150-54	1/16W 1k ohm F
L317	010-3104-54	600 ohm/100MHz	R157	033-1051-15	1/16W 1M ohm J	R364	033-3331-15	1/16W 33k ohm J
L318	010-3104-54	600 ohm/100MHz	R158	033-1051-15	1/16W 1M ohm J	R365	033-3331-15	1/16W 33k ohm J
L319	010-3104-54	600 ohm/100MHz	R201	119-5621-15	1/10W 5.6k ohm	R405	033-0000-05	1/16W 0 ohm
L320	010-3105-70	240ohm/100MHz	R202	119-5621-15	1/10W 5.6k ohm	R411	033-1011-15	1/16W 100 ohm J
L321	010-3104-54	600 ohm/100MHz				R412	033-1011-15	1/16W 100 ohm J

REF NO.	PART NO.	DESCRIPTION	REF NO.	PART NO.	DESCRIPTION	REF NO.	PART NO.	DESCRIPTION
R413	119-4711-15	1/10W 470 ohm	R530	119-1031-15	1/10W 10k ohm	RN408	050-0140-54	1/32W 1k ohm x4J
R414	119-4711-15	1/10W 470 ohm	R531	032-0208-51	1/4W 15k ohm	RN409	050-0140-54	1/32W 1k ohm x4J
R415	119-4711-15	1/10W 470 ohm	R533	AQZ0457	1/16W 150k ohm	T101	010-4100-50	0.215uH
R416	119-4711-15	1/10W 470 ohm			1%	TH101	002-0229-00	TH8L05BAIR8M1B
R418	033-1041-15	1/16W 100k ohm J	R534	AQZ0461	1/16W 270k ohm	VR201	001-9210-50	AVR-
R419	033-3311-15	1/16W 330 ohm J			1%			M1608C270MTAAD
R420	033-3311-15	1/16W 330 ohm J	R535	033-4731-15	1/16W 47k ohm J	VR202	001-9210-50	AVR-
R421	033-1041-15	1/16W 100k ohm J	R536	033-1031-15	1/16W 10k ohm J			M1608C270MTAAD
R422	033-2221-15	1/16W 2.2k ohm J	R538	119-2731-15	1/10W 27k ohm	VR203	001-9210-50	AVR-
R423	033-2221-15	1/16W 2.2k ohm J	R539	119-3321-15	1/10W 3.3k ohm			M1608C270MTAAD
R424	119-1031-15	1/10W 10k ohm	R540	119-0000-05	1/10W 0 ohm JW	VR204	001-9210-50	AVR-
R425	119-1031-15	1/10W 10k ohm	R541	119-0000-05	1/10W 0 ohm JW			M1608C270MTAAD
R426	119-1031-15	1/10W 10k ohm	R542	119-0000-05	1/10W 0 ohm JW	VR205	001-9210-50	AVR-
R427	119-1031-15	1/10W 10k ohm	R544	119-2221-15	1/10W 2.2k ohm			M1608C270MTAAD
R428	033-1031-15	1/16W 10k ohm J	R545	119-0000-05	1/10W 0 ohm JW	VR206	001-9210-50	AVR-
R429	033-1031-15	1/16W 10k ohm J	R546	116-1531-15	1/4W 15k ohm			M1608C270MTAAD
R430	033-1011-15	1/16W 100 ohm J	R547	116-4791-15	1/4W 4.7 ohm	VR207	001-9210-50	AVR-
R431	033-1011-15	1/16W 100 ohm J	R548	116-4791-15	1/4W 4.7 ohm			M1608C270MTAAD
R435	033-4731-15	1/16W 47k ohm J	R550	032-0221-65	1/16W 68k ohm F	VR208	001-9210-50	AVR-
R436	033-4731-15	1/16W 47k ohm J	R551	032-0221-80	1/16W 6.2k ohm F			M1608C270MTAAD
R437	033-1031-15	1/16W 10k ohm J	R555	032-0221-51	1/16W 4.7k ohm F	VR209	001-9210-50	AVR-
R440	033-4731-15	1/16W 47k ohm J	R556	032-0221-51	1/16W 4.7k ohm F			M1608C270MTAAD
R445	033-0000-05	1/16W 0 ohm	R557	033-5611-15	1/16W 560 ohm J	VR210	001-9210-50	AVR-
R446	033-4721-15	1/16W 4.7k ohm J	R558	033-1031-15	1/16W 10k ohm J			M1608C270MTAAD
R447	033-4731-15	1/16W 47k ohm J	R560	032-0221-76	1/16W 24k ohm F	VR213	001-9210-50	AVR-
R448	033-1031-15	1/16W 10k ohm J	R561	032-0221-61	1/16W 6.8k ohm F			M1608C270MTAAD
R449	033-4731-15	1/16W 47k ohm J	R562	033-0000-05	1/16W 0 ohm	VR214	001-9210-50	AVR-
R450	033-1021-15	1/16W 1k ohm J	R563	033-0000-05	1/16W 0 ohm			M1608C270MTAAD
R451	033-1011-15	1/16W 100 ohm J	R564	033-0000-05	1/16W 0 ohm	VR215	001-9210-50	AVR-
R454	033-1011-15	1/16W 100 ohm J	R565	033-0000-05	1/16W 0 ohm			M1608C270MTAAD
R456	033-1021-15	1/16W 1k ohm J	R567	032-0221-65	1/16W 68k ohm F	VR216	001-9210-50	AVR-
R457	033-4721-15	1/16W 4.7k ohm J	R568	032-0221-61	1/16W 6.8k ohm F			M1608C270MTAAD
R458	033-1011-15	1/16W 100 ohm J	R575	033-0000-05	1/16W 0 ohm	VR502	001-9210-50	AVR-
R459	033-1011-15	1/16W 100 ohm J	R576	032-0148-64	1/10W 390k ohm D			M1608C270MTAAD
R460	033-4731-15	1/16W 47k ohm J	R577	032-0148-63	1/10W 130k ohm D	VR503	001-9210-50	AVR-
R462	033-3331-15	1/16W 33k ohm J	R578	033-1841-15	1/16W 180k ohm J			M1608C270MTAAD
R463	033-3331-15	1/16W 33k ohm J	R579	033-3341-15	1/16W 330k ohm J	VR504	001-9210-50	AVR-
R466	033-2231-15	1/16W 22k ohm J	R581	033-1031-15	1/16W 10k ohm J			M1608C270MTAAD
R467	033-4721-15	1/16W 4.7k ohm J	R582	032-0150-51	1/16W 15k ohm F	X301	061-3537-90	41.6MHz
R468	033-4721-15	1/16W 4.7k ohm J	R583	033-5611-15	1/16W 560 ohm J	X401	061-3567-90	8.000MHz AT-41CD2
R475	033-4731-15	1/16W 47k ohm J	R584	033-1031-15	1/16W 10k ohm J	ZD101	060-8107-50	SURGE
R481	033-2221-15	1/16W 2.2k ohm J	R585	119-0000-05	1/10W 0 ohm JW			PROTECTOR
R488	033-1021-15	1/16W 1k ohm J	R588	033-0000-05	1/16W 0 ohm	ZD102	060-8107-50	SURGE
R489	033-1021-15	1/16W 1k ohm J	R589	033-0000-05	1/16W 0 ohm			PROTECTOR
R490	033-1021-15	1/16W 1k ohm J	R590	033-0000-05	1/16W 0 ohm	ZD201	001-4305-39	UDZSTE-17 36B
R491	033-1021-15	1/16W 1k ohm J	R591	033-0000-05	1/16W 0 ohm	ZD501	001-4313-58	HZU6C1L
R495	033-3321-15	1/16W 3.3k ohm J	R592	116-3991-15	1/4W 3.9 ohm	ZD503	001-4305-25	UDZSTE-17 9.1B
R496	033-3321-15	1/16W 3.3k ohm J	R593	116-3991-15	1/4W 3.9 ohm	ZD507	001-4912-90	SM5S22A-HE3/2D
R497	033-1031-15	1/16W 10k ohm J	RN301	050-0140-53	1/32W 0 ohm x4J	ZD508	001-4305-25	UDZSTE-17 9.1B
R521	033-1031-15	1/16W 10k ohm J	RN401	050-0140-52	1/32W 100 ohm x4J	PWB	039-3795-00	PWB(WITHOUT COMPONENTS)
R522	033-3331-15	1/16W 33k ohm J	RN402	050-0140-52	1/32W 100 ohm x4J			
R527	033-1821-15	1/16W 1.8k ohm J	RN405	050-0140-63	1/32W 47k ohm x4J			
R528	033-1031-15	1/16W 10k ohm J	RN406	050-0140-63	1/32W 47k ohm x4J			
R529	119-5611-15	1/10W 560 ohm	RN407	050-0140-54	1/32W 1k ohm x4J			

SW PWB(B2) section

REF NO.	PART NO.	DESCRIPTION	REF NO.	PART NO.	DESCRIPTION	REF NO.	PART NO.	DESCRIPTION
C601	043-0568-90	25V 2.2uF	D622	001-7109-90	SML-311DTT86	R611	116-3921-15	1/4W 3.9k ohm
C602	043-0568-90	25V 2.2uF			ORG	R612	116-3921-15	1/4W 3.9k ohm
C603	043-0552-90	6.3V 47uF M	D623	001-7109-90	SML-311DTT86	R613	116-3921-15	1/4W 3.9k ohm
C604	046-4712-58	470pF K B			ORG	R614	116-3921-15	1/4W 3.9k ohm
C605	043-0568-90	25V 2.2uF	D624	001-7109-90	SML-311DTT86	R615	116-3921-15	1/4W 3.9k ohm
C606	046-1022-58	50V 1000pF			ORG	R616	116-1821-15	1/4W 1.8k ohm
C607	046-1022-58	50V 1000pF	D625	001-7109-90	SML-311DTT86	R617	116-1821-15	1/4W 1.8k ohm
C608	046-1022-58	50V 1000pF			ORG	R618	116-1821-15	1/4W 1.8k ohm
C609	043-0552-90	6.3V 47uF M	D626	001-7109-90	SML-311DTT86	R619	116-1821-15	1/4W 1.8k ohm
C610	043-6400-90	16V 4.7uF K			ORG	R620	116-2221-15	1/4W 2.2k ohm
D601	001-7109-90	SML-311DTT86	D627	001-7109-90	SML-311DTT86	R621	116-2221-15	1/4W 2.2k ohm
		ORG			ORG	R622	116-1511-15	1/4W 150 ohm
D602	001-7109-90	SML-311DTT86	D628	001-7109-90	SML-311DTT86	R623	116-1511-15	1/4W 150 ohm
		ORG			ORG	R624	116-1511-15	1/4W 150 ohm
D603	001-7109-90	SML-311DTT86	D629	001-7109-90	SML-311DTT86	R625	116-1511-15	1/4W 150 ohm
		ORG			ORG	R626	116-1511-15	1/4W 150 ohm
D604	001-7109-90	SML-311DTT86	D630	001-7109-90	SML-311DTT86	R627	116-1511-15	1/4W 150 ohm
		ORG			ORG	R635	032-0150-55	1/16W 2.7k ohm F
D605	001-7109-90	SML-311DTT86	D631	001-7148-90	NSSB064-EE7-	R636	032-0150-55	1/16W 2.7k ohm F
		ORG			TKMLP4R2	R637	032-0150-55	1/16W 2.7k ohm F
D606	001-7109-90	SML-311DTT86	D632	001-7148-90	NSSB064-EE7-	R638	032-0150-55	1/16W 2.7k ohm F
		ORG			TKMLP4R2	R651	032-0140-72	1/10W 470 ohm F
D607	001-7109-90	SML-311DTT86	D633	001-7148-90	NSSB064-EE7-	SW601	013-6202-52	SKPMBJE010
		ORG			TKMLP4R2	SW602	013-6201-53	SKPMAPE010
D608	001-7109-90	SML-311DTT86	D634	001-7148-90	NSSB064-EE7-	SW603	013-6201-53	SKPMAPE010
		ORG			TKMLP4R2	SW604	016-7006-00	ROTARY SW
D609	001-7109-90	SML-311DTT86	D635	001-7148-90	NSSB064-EE7-	SW605	016-7006-00	ROTARY SW
		ORG			TKMLP4R2	SW606	013-6202-52	SKPMBJE010
D610	001-7109-90	SML-311DTT86	D636	001-7148-90	NSSB064-EE7-	SW607	013-6202-52	SKPMBJE010
		ORG			TKMLP4R2	SW608	013-6202-52	SKPMBJE010
D611	001-7109-90	SML-311DTT86	D637	001-7148-90	NSSB064-EE7-	SW609	013-6202-52	SKPMBJE010
		ORG			TKMLP4R2	SW610	013-6202-52	SKPMBJE010
D612	001-7109-90	SML-311DTT86	D638	001-7148-90	NSSB064-EE7-	SW611	013-6202-52	SKPMBJE010
		ORG			TKMLP4R2	SW612	013-6201-53	SKPMAPE010
D613	001-7109-90	SML-311DTT86	D639	001-7148-90	NSSB064-EE7-	SW613	013-6201-53	SKPMAPE010
		ORG			TKMLP4R2	SW614	013-6201-53	SKPMAPE010
D614	001-7109-90	SML-311DTT86	D640	001-7148-90	NSSB064-EE7-	SW615	013-6201-53	SKPMAPE010
		ORG			TKMLP4R2	SW616	013-6202-52	SKPMBJE010
D615	001-7109-90	SML-311DTT86	IC601	051-6105-00	LC75818PHT-	SW617	013-6202-52	SKPMBJE010
		ORG			8561-H	SW618	013-6202-52	SKPMBJE010
D616	001-7109-90	SML-311DTT86	J601	075-0395-01	JACK	SW619	013-6202-52	SKPMBJE010
		ORG	J602	074-3055-26	26P	SW620	013-6202-52	SKPMBJE010
D617	001-7109-90	SML-311DTT86	R601	033-0000-05	1/16W 0 ohm	VR601	001-9210-50	AVR-
		ORG	R602	033-1031-15	1/16W 10k ohm J			M1608C270MTAAD
D618	001-7109-90	SML-311DTT86	R603	116-1821-15	1/4W 1.8k ohm	VR602	001-9210-50	AVR-
		ORG	R604	116-1221-15	1/4W 1.2k ohm			M1608C270MTAAD
D619	001-7109-90	SML-311DTT86	R605	116-1821-15	1/4W 1.8k ohm	VR603	001-9210-50	AVR-
		ORG	R606	116-1821-15	1/4W 1.8k ohm			M1608C270MTAAD
D620	001-7109-90	SML-311DTT86	R607	116-1221-15	1/4W 1.2k ohm	VR604	001-9210-50	AVR-
		ORG	R608	116-1221-15	1/4W 1.2k ohm			M1608C270MTAAD
D621	001-7109-90	SML-311DTT86	R609	116-1221-15	1/4W 1.2k ohm	PWB	039-3856-00	PWB(WITHOUT
		ORG	R610	116-3921-15	1/4W 3.9k ohm			COMPONENTS)