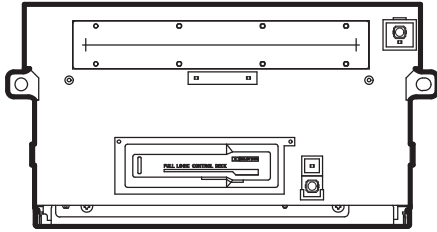


**DRAFT**

# Service Manual



NISSAN Genuine  
 AM/FM Radio Cassette Stereo  
 CD Deck

Model **PN-2531D-D,E**  
 (Genuine No. 28188 ZK00A)  
 (ID No. CR12B)

(D-D Serial No. From 0044179 to 0051378)  
 (D-E Serial No. From 0051379)

## ORIGINAL SERVICE MANUAL

This additional service manual is designed to be used together with Model PN-2531D-B

Original model	Manual No.
PN-2531D-B	298-6205-00

Some mount, electric parts and CD mechanism differ from the original model.  
 PN-2531D-D and PN-2531D-E production places difference.

## SPECIFICATIONS

### Radio section

Tuning system: PLL frequency synthesizer system  
 AM 530kHz to 1,710kHz  
 FM 87.75Hz to 107.9MHz

Intermediate frequency:  
 AM 450kHz  
 FM 10.7MHz

Quieting sensitivity:  
 AM Less than 38dBu(at 20dB S/N)  
 FM Less than 15dBu(at 30dB S/N)

Separation: FM 22 +5/-7 dB(1kHz)

SASC sensitivity: FM 33 +6/-6 dBu(at 7kHz, -2dB)

Auto tuning stop sensitivity:  
 AM 42 +6/-6 dBu(600kHz)  
 39 +6/-6 dBu(1000/1400kHz)  
 FM 32 +6/-6 dBu

### CD section

Disc: 12cm,8cm Disc  
 Separation: More than 50dB  
 S/N ratio: More than 74dB

### Tape section

Reproducing system: 4 track,2 program  
 2 channel stereo system

Wow and flutter: Less than 0.15%(W.R.M.S)

Separation: More than 35dB

Cross talk: More than 45dB

S/N ratio: Normal tape(120us)  
 45dB/55dB(DOLBY B NR ON)  
 Metal tape(70us)  
 47dB/57dB(DOLBY B NR ON)

FF/REW time: Less than 110sec.(C-60)

### General

Load impedance: 4 ohm

Power output: 40W x 4

Power supply voltage: DC13.2V(10.8V to 15.6V)  
 Negative ground

Back-up consumption: Less than 0.5mA

Dimensions(mm): 180(W) x 106.4(H) x 156.6(D)

Weight: Approx. 2.2kg

## COMPONENTS

### PN-2531D-D,E

1. Main unit ----- 1

# DEFFARENCE FROM ORIGINAL EXPLODED VIEW / PARTS LIST

## Main section

NO.	PART NO.	DESCRIPTION	Q'TY
1	940-8017-62	ESCUTCHEON ASSY	1
6	880-1921V	AM/FM TUNER	1
7	NO USED	OUTLET SOCKET	1

NO.	PART NO.	DESCRIPTION	Q'TY
24	929-5007-80	CD-MECHANISM	1
31	286-6126-78 286-6657-06	SETPLATE(PN2531DD) SETPLATE(PN2531DE)	1

## Only PN-2531D-E(same PN-2531D-A)

NO.	PART NO.	DESCRIPTION	Q'TY
16	310-1740-01	UPPER CASE	1
17	311-1834-00	LOWER CASE	1
19	331-3260-00	SIDE PLATE(L)	1
20	331-3261-00	SIDE PLATE(R)	1

NO.	PART NO.	DESCRIPTION	Q'TY
21	331-3262-01	MECH BRKT(F)	1
22	331-3263-00	MECH BRKT(R)	1
23	331-3483-00	ES-PLATE	1

Parts production places difference.

Other exploded view parts of PN-2531D-D,E is the same as page6 of PN-2531D-B

## CD mechanisun section :929-5007-80

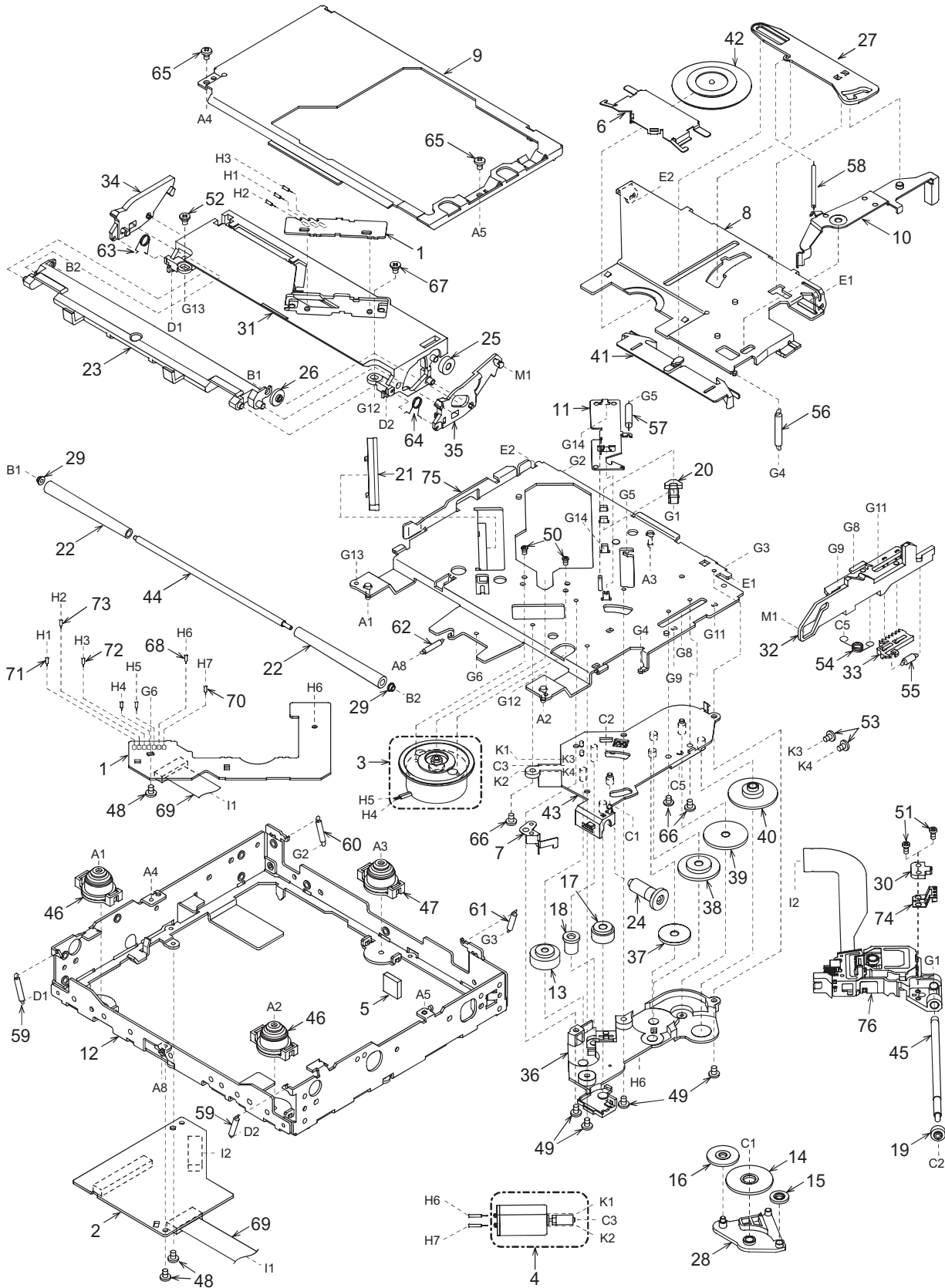
NO.	PART NO.	DESCRIPTION	Q'TY
1	-----	SENSOR PWB	1
2	-----	MAIN PWB	1
3	SMA-182-100	SPINDLE MOTOR-ASSY	1
4	SMA-183-100	SLED MOTOR-ASSY	1
5	345-5476-20	CUSHION RUBBER	1
6	620-1023-23	CLAMPER PLATE	1
7	620-1026-21	SPRING PLATE	1
8	620-1596-23	CLAMPER LINK	1
9	620-1598-22	UPPER CHASSIS	1
10	620-1752-20	SENSOR ARM	1
11	620-1753-20	ID-LOCK PLATE	1
12	620-1754-20	LOWER CHASSIS	1
13	621-0608-21	SECOND GEAR	1
14	621-0609-20	BASE GEAR	1
15	621-0610-20	IDLE GEAR A	1
16	621-0611-20	IDLE GEAR B	1
17	621-0612-21	ROLLER GEAR A	1
18	621-0620-20	THREAD GEAR A	1
19	621-0621-20	THREAD GEAR B	1
20	621-0623-23	LS-HOLDER	1
21	621-0624-22	GUIDE RAIL	1
22	621-0711-20	LOADING ROLLER	2
23	621-0718-21	ROLLER GUIDE	1
24	621-0719-20	ROLLER GEAR B	1
25	621-0720-20	ROLLER GEAR C	1
26	621-0721-20	ROLLER GEAR D	1
27	621-0728-20	STOPPER LINK	1
28	621-1719-20	IDLE CASE	1
29	621-1726-20	ROLLER SLEEVE	2
30	621-1729-20	SH-BASE	1
31	621-1742-20	UPPER GUIDE	1
32	621-1743-20	SHIFT LEVER	1
33	621-1744-20	RACK	1
34	621-1745-20	LOCK ARM L	1
35	621-1746-20	LOCK ARM R	1

NO.	PART NO.	DESCRIPTION	Q'TY
36	621-1747-20	GEAR COVER	1
37	621-1748-20	POWER GEAR A	1
38	621-1749-20	POWER GEAR B	1
39	621-1750-20	POWER GEAR C	1
40	621-1751-20	POWER GEAR D	1
41	621-1752-20	DISC STOPPER	1
42	621-1753-20	CLAMPER RING	1
43	621-1754-20	GEAR BASE	1
44	622-1571-21	ROLLER SHAFT	1
45	624-0020-00	LEAD SCREW	1
46	629-0086-20	DAMPER F	2
47	629-0087-20	DAMPER R	1
48	716-1507-01	SCREW(M2x3)	3
49	716-1670-01	SCREW(M2x4)	4
50	716-1733-01	SCREW(M1.7x2.3)	2
51	716-3469-01	SCREW(1.7x4)	2
52	716-3473-01	SCREW(M2x3)	1
53	716-3551-00	SCREW(M1.4x2.5)	2
54	750-3467-21	SHIFT SPRING	1
55	750-3468-20	RACK SPRING	1
56	750-3469-20	CLAMPER SPRING	1
57	750-3470-20	ID-LOCK SPRING	1
58	750-3471-20	SENSOR SPRING	1
59	750-3472-21	DR-SPRING F	2
60	750-3473-20	DR-SPRING RA	1
61	750-3474-20	DR-SPRING RB	1
62	750-3475-21	DR-SPRING C	1
63	750-6797-20	ROLLER SPRING L	1
64	750-6798-20	ROLLER SPRING R	1
65	714-2003-8B	SCREW(M2x3)	2
66	780-2025-00	SCREW(M2x2.5)	3
67	781-1730-00	SCREW(M1.7x3)	1
68	803-4906-60	VINYL-COAT-WIRE(ORG)	1
69	816-2542-01	FLAT WIRE	1
70	816-2590-00	VINYL-COAT-WIRE(GRN)	1

NO.	PART NO.	DESCRIPTION	Q'TY
71	816-2591-00	VINYL-COAT-WIRE(YEL)	1
72	816-2592-00	VINYL-COAT-WIRE(BLUE)	1
73	816-2593-00	VINYL-COAT-WIRE(PUR)	1

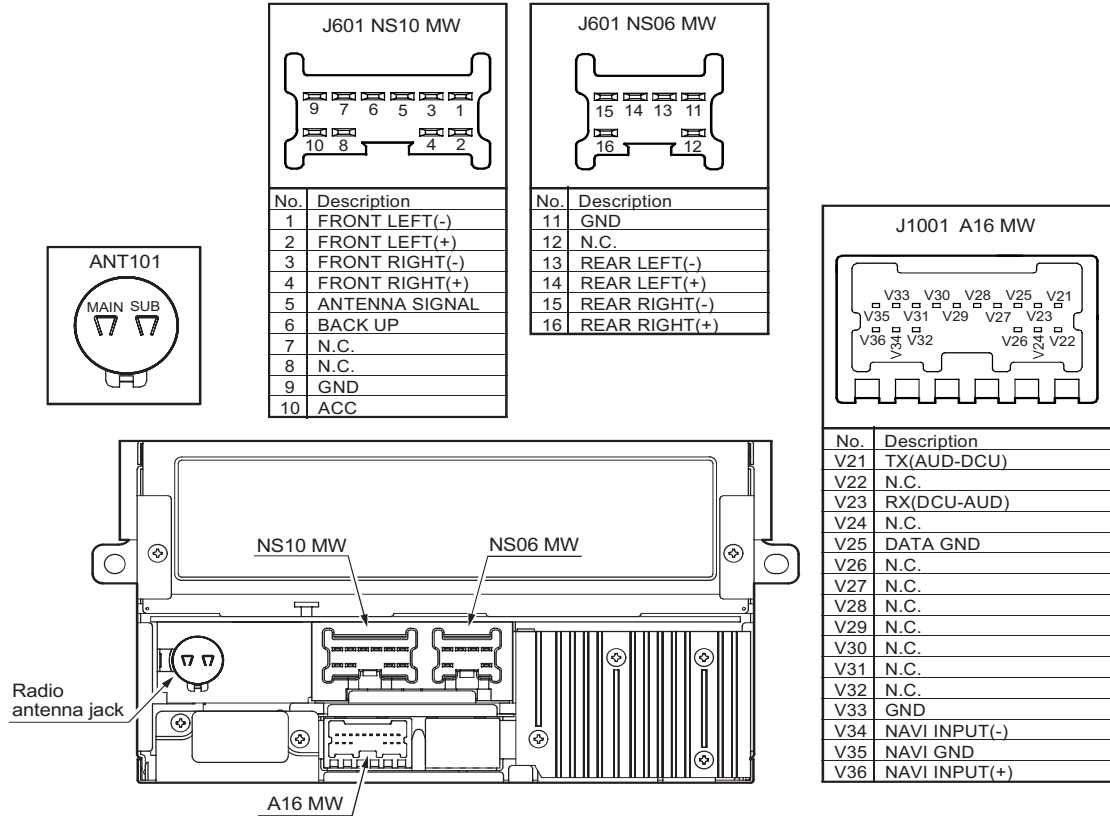
NO.	PART NO.	DESCRIPTION	Q'TY
74	966-1722-20	SH-RACK-ASSY	1
75	966-1743-21	DRIVE-PLT-ASSY	1
76	969-0071-30	PICKUP-ASSY	1

Other exploded view parts of 929-0065-84 is the same as page5 of 929-0065-81



# CONNECTOR LAYOUT

Rear view



## DEFFERENCE FROM ORIGINAL ELECTRICAL PARTS LIST

Main PWB(B1) section

Difference the following parts in the parts list.(page 10,11 and 12)

REF No.	PART No.	DESCRIPTION	REF No.	PART No.	DESCRIPTION	REF No.	PART No.	DESCRIPTION
C602	168-6822-55	6800pF K	C606	168-6822-55	6800pF K	IC404	052-3177-30	M30624MGA-636GP
C603	168-6822-55	6800pF K	C607	168-6822-55	6800pF K	Q101	192-2712-00	2SC2712
C604	168-6822-55	6800pF K	C608	168-6822-55	6800pF K	Q102	192-2712-00	2SC2712
C605	168-6822-55	6800pF K	C609	168-6822-55	6800pF K	Q507	191-1205-65	2SB1205 S,T

add the following parts in the parts list.(page 12)

REF No.	PART No.	DESCRIPTION	REF No.	PART No.	DESCRIPTION
R1026	119-4731-15	1/10W 47k ohm	R1027	119-4731-15	1/10W 47k ohm

Removed the following parts in the parts list.(page 10,11 and 12)

REF No.	PART No.	DESCRIPTION	REF No.	PART No.	DESCRIPTION	REF No.	PART No.	DESCRIPTION
C1001	042-1562-17	16V 10uF	D1006	001-0330-90	1SS119	R1008	119-5631-15	1/10W 56k ohm
C1002	042-1562-17	16V 10uF	D1007	001-0330-90	1SS119	R1009	119-5621-15	1/10W 5.6k ohm
C1003	042-1562-17	16V 10uF	Q1001	125-0001-91	UN2111	R1010	119-2231-15	1/10W 22k ohm
C1004	042-1562-17	16V 10uF	Q1002	193-0601-00	2SD601A	R1011	111-8211-98	1/4W 820 ohm
C1005	168-1022-55	1000pF K	Q1003	193-0601-00	2SD601A	R1012	111-8211-98	1/4W 820 ohm
C1006	168-1022-55	1000pF K	Q1004	125-9003-92	IMD3	R1013	111-8211-98	1/4W 820 ohm
C1007	168-2232-55	0.022uF K	Q1005	125-9003-92	IMD3	R1014	111-8211-98	1/4W 820 ohm
C1008	168-2222-55	2200pF K	Q1006	125-2005-91	UN2211	R1015	119-4731-15	1/10W 47k ohm
C1009	168-2222-55	2200pF K	Q1007	125-9006-90	IMX1	R1016	119-1031-15	1/10W 10k ohm
C1010	168-1022-55	1000pF K	R1001	119-4731-15	1/10W 47k ohm	R1017	119-1031-15	1/10W 10k ohm
C1011	168-1022-55	1000pF K	R1002	119-3011-15	1/10W 300 ohm	R1018	119-5631-15	1/10W 56k ohm
D1001	001-0330-90	1SS119	R1003	119-3011-15	1/10W 300 ohm	R1019	119-5631-15	1/10W 56k ohm
D1002	001-0422-38	MTZJ36	R1004	119-1031-15	1/10W 10k ohm	R1020	119-5621-15	1/10W 5.6k ohm
D1003	001-0529-44	MA8082-M	R1005	119-5631-15	1/10W 56k ohm	R1021	119-5621-15	1/10W 5.6k ohm
D1004	001-0584-35	MA8240	R1006	119-1021-15	1/10W 1k ohm	R310	032-0106-52	1/10W 27k ohm D
D1005	001-0584-35	MA8240	R1007	119-1031-15	1/10W 10k ohm			

Other parts are the same as the original service manual page page 10,11 and 12.

# ELECTRICAL PARTS LIST: CD mechanism

## CD PWB(B3) section

REF No.	PART No.	DESCRIPTION	REF No.	PART No.	DESCRIPTION	REF No.	PART No.	DESCRIPTION
C101	168-1042-78	0.1uF	C208	046-6822-58	6800pF	R110	033-1051-15	1/16W 1M ohm
C102	045-4701-50	47pF	C209	168-1042-78	0.1uF	R111	033-3321-15	1/16W 3.3k ohm
C103	046-4722-58	4700pF	C210	043-0533-50	0.047uF	R114	033-2211-15	1/16W 220 ohm
C104	168-1042-78	0.1uF	C211	168-1042-78	0.1uF	R115	033-2211-15	1/16W 220 ohm
C105	046-1532-78	0.015uF	C212	168-1042-78	0.1uF	R116	033-1031-15	1/16W 10k ohm
C106	046-1032-78	0.01uF	C213	045-5096-50	5pF	R117	033-1021-15	1/16W 1k ohm
C107	046-1032-78	0.01uF	C214	045-5601-50	56pF	R131	033-4711-15	1/16W 470 ohm
C108	046-4722-58	4700pF	C215	043-0533-50	0.047uF	R132	033-2211-15	1/16W 220 ohm
C109	046-1522-58	1500pF	C216	178-1052-78	1uF	R201	117-2201-15	1/10W 22 ohm
C110	046-3332-78	0.033uF	C217	045-1011-50	100pF	R202	117-2201-15	1/10W 22 ohm
C111	168-1042-78	0.1uF	C301	163-1073-35	16V100uF	R203	033-1041-15	1/16W 100k ohm
C112	046-3332-78	0.033uF	C302	168-1042-78	0.1uF	R204	033-1041-15	1/16W 100k ohm
C113	168-1042-78	0.1uF	C303	043-0533-50	0.047uF	R205	033-1641-15	1/16W 160k ohm
C114	168-1042-78	0.1uF	CCT1	050-0140-54	1Kx4	R206	033-1641-15	1/16W 160k ohm
C115	046-4712-58	470pF	D201	001-0516-90	MA111	R207	033-1041-15	1/16W 100k ohm
C116	046-4712-58	470pF	IC101	051-6376-00	TC94A14FA	R208	033-8231-15	1/16W 82k ohm
C117	043-0533-50	0.047uF	IC102	051-3279-90	BA033LBSG	R209	033-6811-15	1/16W 680 ohm
C118	043-0533-50	0.047uF	IC201	051-5710-90	TA2157F	R210	033-6831-15	1/16W 68k ohm
C119	045-2701-50	27pF	IC301	051-6049-08	BA5983FP-E2	R211	033-1831-15	1/16W 18k ohm
C120	045-1801-50	18pF	J101	074-1228-76	26P	R212	033-2721-15	1/16W 2.7k ohm
C121	163-1063-35	16V10uF	J201	074-1138-65	15P	R213	033-1011-15	1/16W 100 ohm
C122	178-1052-78	1uF	J301	074-1138-60	10P	R214	033-1021-15	1/16W 1k ohm
C123	046-1032-78	0.01uF	L101	010-2285-57	BLM21B102SPT	R215	033-1031-15	1/16W 10k ohm
C124	163-1073-05	4V100uF	L102	010-2285-57	BLM21B102SPT	R217	033-1041-15	1/16W 100k ohm
C125	168-1042-78	0.1uF	L103	010-2285-57	BLM21B102SPT	R218	033-2211-15	1/16W 220 ohm
C126	168-1042-78	0.1uF	L104	010-2285-57	BLM21B102SPT	R301	117-6811-15	1/16W 680 ohm
C129	178-1052-78	1uF	L105	010-2285-57	BLM21B102SPT	R304	033-3921-15	1/16W 3.9k ohm
C201	163-3363-05	4V33uF	L401	010-3050-93	10uH	R305	033-3921-15	1/16W 3.9k ohm
C202	168-1042-78	0.1uF	Q201	131-1188-50	2SB1188	R306	033-1041-15	1/16W 100k ohm
C203	178-1052-78	1uF	R102	033-5621-15	1/16W 5.6k ohm	R307	033-2211-15	1/16W 220 ohm
C204	163-1073-05	4V100uF	R104	033-4731-15	1/16W 47k ohm	X102	060-1528-90	16.934M
C205	163-3363-05	4V33uF	R105	033-1041-15	1/16W 100k ohm	PWB	039-1945-20	PWB(WITHOUT COMPONENT)
C206	168-1042-78	0.1uF	R108	033-1531-15	1/16W 15k ohm			
C207	043-0533-50	0.047uF	R109	033-1031-15	1/16W 10k ohm			

## LED PWB(B4) section

REF No.	PART No.	DESCRIPTION	REF No.	PART No.	DESCRIPTION	REF No.	PART No.	DESCRIPTION
D1	001-7058-90	AN1105W-RR	Q1	060-4015-91	PS1192HB-32-TR	S2	013-7413-50	LIMIT
D2	001-7058-90	AN1105W-RR	Q2	060-4015-91	PS1192HB-32-TR	PWB	039-1944-21	PWB(WITHOUT COMPONENT)
J1	074-1138-60	10P	S1	013-7414-50	CHUCKING			