

Service Manual

ORDER NO.
CRT4143

DVD MULTIMEDIA AV NAVIGATION SERVER

AVIC-N5 /XU/UC

DVD MULTIMEDIA AV NAVIGATION HEAD UNIT

AVIC-X3II /XU/EW5



is a trademark of DVD Format/Logo Licensing Corporation.

This service manual should be used together with the following manual(s) listed below. For the parts numbers, adjustments, etc. which are not shown in this manual, refer to the following manual(s).

Model No.	Order No.	Mech. Module	Remarks
AVIC-N4/XU/UC	CRT3971		
CX-3212	CRT3896	MS5	DVD Mech. Module : Circuit Descriptions, Mech. Descriptions, Disassembly

This product has the unit part number as below.

Unit Part No.	Description
CPN2830	Navigation Unit (AVIC-N5/XU/UC)
CPN2832	H/A Unit (AVIC-N5/XU/UC)
CPN2831	Navigation Unit (AVIC-X3II/XU/EW5)
CPN2837	H/A Unit (AVIC-X3II/XU/EW5)

*) The unit part numbers listed above are not for the service components.

SAFETY INFORMATION

WARNING

This product contains certain electrical parts contain chemicals which are known to the State of California to cause cancer, birth defects or other reproductive harm.
Health & Safety Code Section 25249.6 - Proposition 65

This product contains mercury. Disposal of this material may be regulated due to environmental considerations. For disposal or recycling information, please contact your local authorities or the Electronics Industries Alliance: www.eiae.org.

The backlighting lamp of LCD in this equipment contains mercury. Disposal of this material may be regulated due to environmental considerations according to Local, State or Federal Laws. For disposal or recycling information, please contact your local authorities or the Electronics Industries Alliance: www.eiae.org

EXPLODED VIEWS AND PARTS LIST

PACKING(UC)(Page 150)

PACKING(UC) SECTION PARTS LIST

* : Non spare part

Mark	No.	Description	AVIC-N4/XU/UC	AVIC-N5/XU/UC
	2	Unit Box	CHG6243	CHG6576
	3	Contain Box	CHL6243	CHL6576
	36	DVD-ROM	CPJ1184	CPJ1255
	38-2	Owner's Manual	CRB2449	CRB2738(English)
	38-3	Owner's Manual/POC/FRE	CRB2450	CRB2739(French)
	38-4	Owner's Manual	CRB2451	CRB2740(English)
	38-5	Owner's Manual/POC/FRE	CRB2452	CRB2741(French)
	38-6	Installation Manual	CRD4241	CRD4341

PACKING(EW5)(Page 152)

PACKING(EW5) SECTION PARTS LIST

Mark	No.	Description	AVIC-X3/XU/EW5	AVIC-X3II/XU/EW5
	2	Unit Box	CHG6242	CHG6575
	3	Contain Box	CHL6242	CHL6575
	36	DVD-ROM	Not used	CPJ1256
	38-2	Owner's Manual/PEE/ENG	CRB2453	CRB2742(English)
	38-3	Owner's Manual/PEE/SPE	CRB2454	CRB2743(Spanish)
	38-4	Owner's Manual/PEE/GER	CRB2455	CRB2744(German)
	38-5	Owner's Manual/PEE/FRE	CRB2456	CRB2745(French)
	38-6	Owner's Manual/PEE/ITA	CRB2457	CRB2746(Italian)
	38-7	Owner's Manual/PEE/DUT	CRB2458	CRB2747(Dutch)
	38-8	Owner's Manual/PEE/ENG	CRB2459	CRB2748(English)
	38-9	Owner's Manual/PEE/SPE	CRB2460	CRB2749(Spanish)
	38-10	Owner's Manual/PEE/GER	CRB2461	CRB2750(German)
	38-11	Owner's Manual/PEE/FRE	CRB2462	CRB2751(French)
	38-12	Owner's Manual/PEE/ITA	CRB2463	CRB2752(Italian)
	38-13	Owner's Manual/PEE/DUT	CRB2464	CRB2753(Dutch)
	38-14	Installation Manual	CRD4242	CRD4342
*	38-16	Caution Card	CRP1362	Not used

EXTERIOR(1)(Page 154)

EXTERIOR(1) SECTION PARTS LIST

Mark	No.	Description	AVIC-N4/XU/UC	AVIC-N5/XU/UC
	16	Case	CNB3412	CNB3528
	65	Grille Assy	CXC7367	CXC9837
	74	Plate	CNS9023	CNS9561
	104	Mother Tuner Unit	CWN2310	CWN3657

Mark	No.	Description	AVIC-X3/XU/EW5	AVIC-X3II/XU/EW5
	16	Case	CNB3412	CNB3528
	65	Grille Assy	CXC7368	CXC9838
	74	Plate	CNS9024	CNS9562
	104	Mother Unit	CWN2311	CWN3658(Mother Tuner Unit)

EXTERIOR(2)(Page 156)

EXTERIOR(2) SECTION PARTS LIST

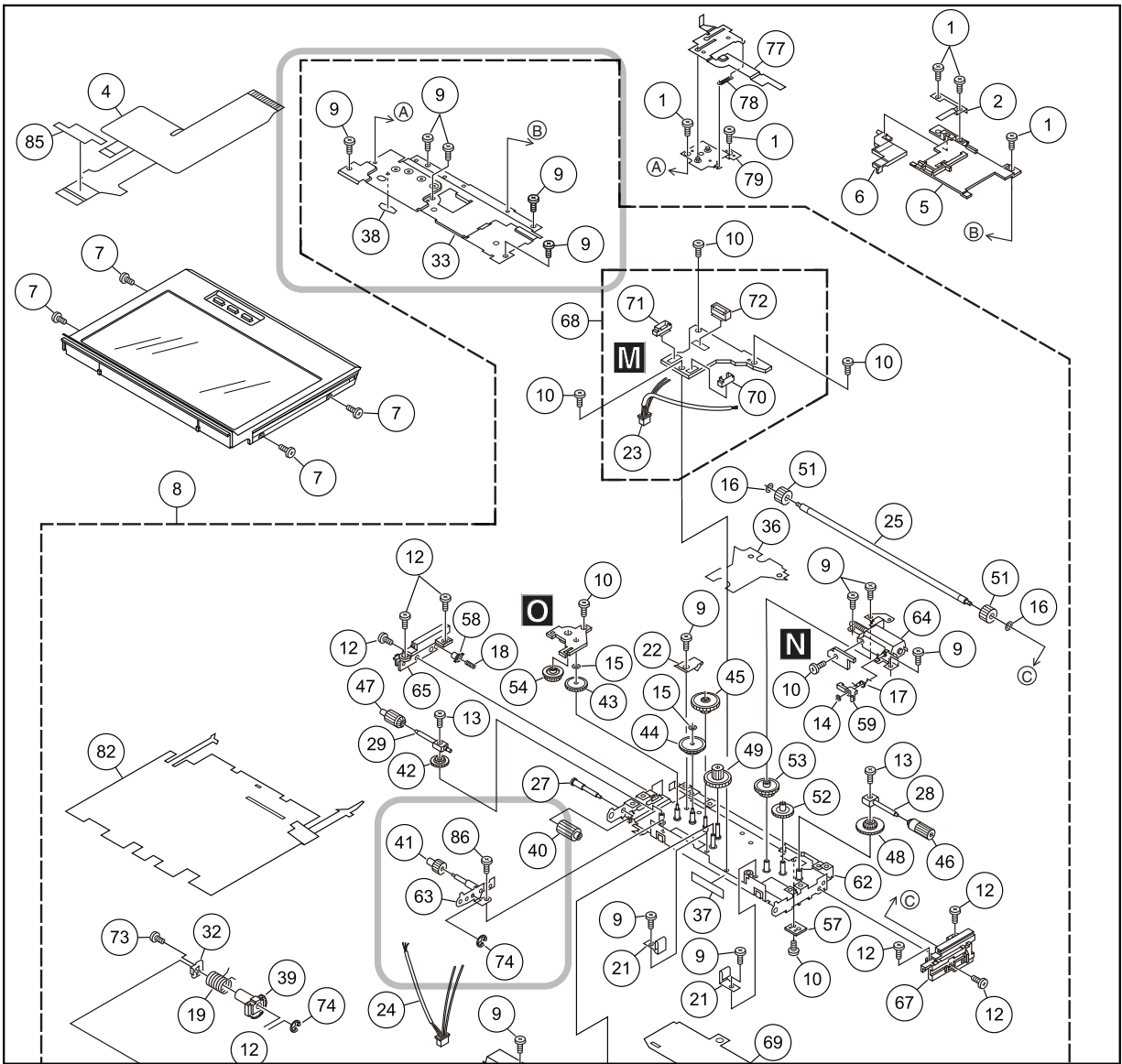
Mark	No.	Description	AVIC-N4/XU/UC AVIC-X3/XU/EW5	AVIC-N5/XU/UC AVIC-X3II/XU/EW5
	8	Drive Unit	CXC7637	CXC9160
	9	Screw(M2 x 2)	CBA1608(x8)	CBA2129(x12)
	12	Screw(M2 x 3)	CBA1877(x13)	CBA1877(x8)
	19	Spring	CBH2908	CBH3007
	20	Spring	CBH2909	CBH3004
	28	Shaft	CLA4663	CLA4821
	29	Shaft	CLA4664	CLA4814
	36	Insulator	CNN1058	CNN2168
	54	Gear	CNV8987	CNW1055
	62	Frame Unit	CXC6143	CXC9184
	68	Main PCB Unit(Service)	CXX2316	* EWX1005(Main PCB Unit)
	86	Screw(M2 x 2)	Not used	CBA1955

A

B

C

D



EXTERIOR(4)(Page 162)
EXTERIOR(4) SECTION PARTS LIST

Mark	No.	Description	AVIC-N4/XU/UC	AVIC-N5/XU/UC
	7	Case	CNB3408	CNB3526
	10	Mother Tuner Unit	CWN2310	CWN3657

E

Mark	No.	Description	AVIC-X3/XU/EW5	AVIC-X3II /XU/EW5
	7	Case	CNB3409	CNB3527
	10	Mother Unit	CWN2311	CWN3658(Mother Tuner Unit)
	37	FM/AM Tuner Unit	CWE2045	CWE2130

ELECTRICAL PARTS LIST(Page 264)

MOTHER TUNER UNIT

F

Circuit Symbol and No.	Part Name	AVIC-N4/XU/UC AVIC-X3/XU/EW5	AVIC-N5/XU/UC AVIC-X3II /XU/EW5
IC1606	IC(UC)	PEG355A	PEG503A8
IC1606	IC(EW5)	PEG354A	PEG502A8
ZNR1401	Surge Protector	RCCA-201Q31UA-PI	CSA30-201N